

**A Compilation of
Yukon's Natural Resources**

LEGEND:

Resource Potential

HYDROELECTRIC

- Potential Hydroelectric Power Generation/ Storage Sites (Generalized Location)

MINERAL RESOURCES

- Minfile Occurrence (Yukon Minfile Database 1999)**
 - Open Pit past producer
 - Underground past producer
 - Deposit
 - Prospect
 - Showing
- Yukon Placer Activity Database (2001)**
 - Major Gold-Bearing Streams
 - Proven or Potential Gold-Bearing Streams

OIL & GAS RESOURCES

- Oil & Gas Basins
- Coal Lease (as of November 2002)
- Coal Licence (as of November 2002)
- Oil & Gas Dispositions (as of July 2002)
- Oil & Gas Well

FORESTRY RESOURCES

- Presently Merchantable Timber
- Harvested Areas (as of August 2002)

Infrastructure

- Airstrips
- Roads (Primary/Secondary)
- Railroad (not currently in use)
- Power Generation Station (Hydro/Diesel)
- Hydroelectric Transmission Line
- Pipeline

Special Consideration Areas

- National & Territorial Parks and First Nation Final Agreement Chapter 10 Special Management Areas (SMA). Designation and withdrawal status of SMA are subject to change.
- First Nation Settlement Lands, Lands Interim Protected for future FN Settlement Lands (as of April 4, 2003). These are subject to change, please contact the appropriate First Nations for current information.

Notice to Users

This map sheet is within the Traditional Territories of the First Nation of Nacho Nyak Dun, the Tetlit Gwich'in First Nation, the Tr'ondek Hwech'in First Nation, and the Vuntut Gwitchin First Nation. Those considering resource development in this area should contact the appropriate representatives, including the following:

First Nation of Nacho Nyak Dun
phone: (867) 956-2265
address: Box 220 Mayo, YT Y0B 1M0
email: tradministration@nndfn.com

Tr'ondek Hwech'in
phone: (867) 993-6385
address: Box 599 Dawson City, YT Y0B 1G0
email: trondek@ykn.net

Vuntut Gwitchin First Nation
phone: (867) 966-3261
address: Box 94 Old Crow, YT Y0B 1N0
email: info@vgfn.net

Data Limitations:
Access Consulting Group (ACG) compiled data from various sources and agencies to prepare the maps in this atlas. Since the compilation contains information derived from multiple sources the data provided herein may be inaccurate or out of date. Furthermore any person who relies on said information for any purpose whatsoever does so with a recognition of the data limitations and solely at his or her own risk. While every effort has been made to ensure the accuracy, precision and timeliness of materials presented in these maps, ACG assumes no responsibility for errors or omissions inherent in the original data prior to its being compiled by ACG. ACG is not responsible for claims by a third party. The maps shown here are for illustrative purposes only, are intended for use only at the published scale, and are not suitable for site-specific decision making. The data may have a number of errors which may contain but are not limited to the following:

- Spatial Errors
- Registration Errors
- Attribute Errors
- Currency Errors
- Completeness Errors
- Projection Distortion

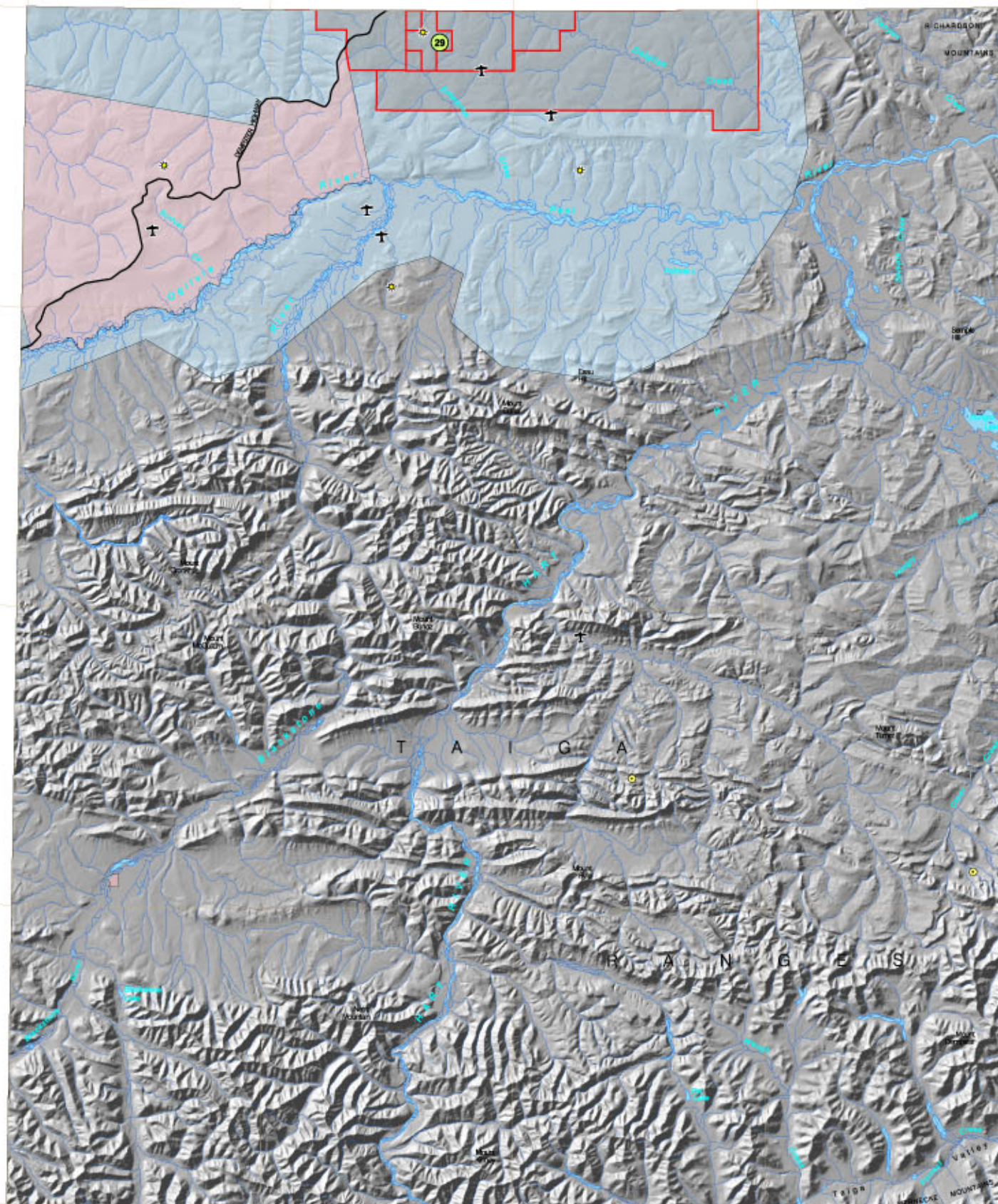


Data available as of November 10, 2003

116H

Hart River

Yukon Map Key



Scale 1:250 000

