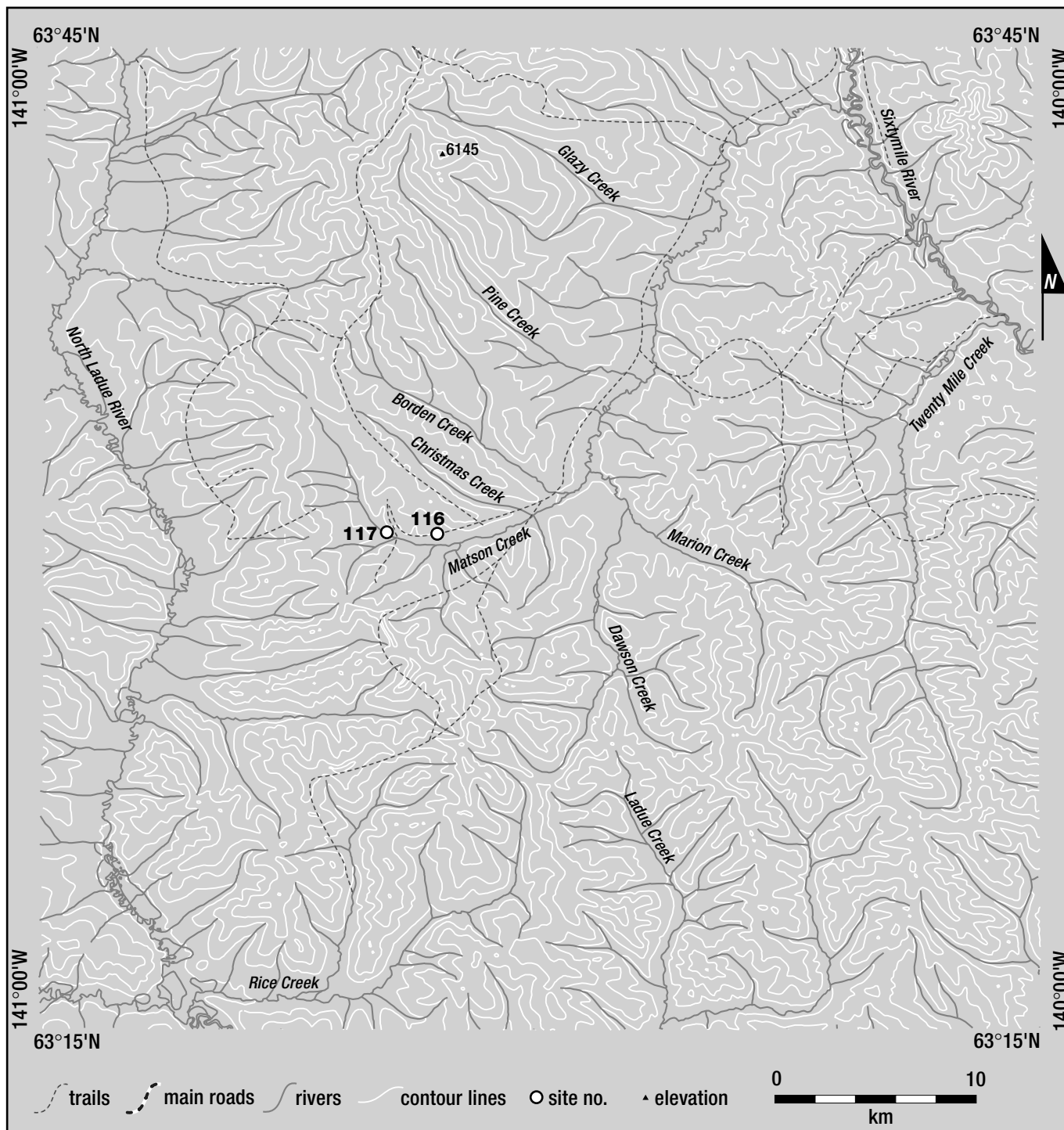


MATSON CREEK

PLACER AREA

SITES
116-117



LEGEND

- 116 Gene Fowler, Matson Creek
- 117 Powers & Long, Matson Creek

| MATSON CREEK | 115N/7 |
|--------------------------|------------------|
| Gene Fowler | 63°29'N 140°35'W |
| Water Licence: PM94-089 | 1998, 1999 |
| Matson Creek Placer Area | Site no. 116 |

OPERATION/LOCATION Gene Fowler continued to mine near the area locally known as Val D'Or in 1998 and 1999. The operation was shut down in 2000 and the restoration and removal of equipment was done.

EQUIPMENT/FUNCTION Three Caterpillar D9G bulldozers were used for stripping the cuts and three Caterpillar 621 scrapers hauled the pay gravels to the wash plant. A 350 Bucyrus Erie excavator fed the wash plant and was used to dig trenches and drains. A Hough 90 loader was used for miscellaneous yard work.

WASH PLANT The wash plant consisted of a grizzly over a hopper which fed the pay gravels onto a 30-inch wide conveyor. The pay gravels were fed at a constant rate onto a double deck screen plant. The classified gravels were washed through a single sluice run which then split into two oscillating sluice runs. The oversize material was carried off by a 36-inch conveyor stacker. A 6-inch Cornell pump, powered by a Duetz engine, supplied the 1000 igpm that was required to process between 150 and 250 cubic yards per hour.

GROUND DESCRIPTION The ground mined in 1998 had an average of 25 feet of silt/muck overlying 5 feet of gravels. Bedrock tended to be hard and solid. The cuts mined in 1999, upstream along the left limit, averaged 25 feet deep with 20 to 23 feet of muck and approximately 2 feet of gravels. Bedrock varied from solid to decomposed. The bottom foot of gravel, and from 2 feet to 5 feet of bedrock, was sluiced. Almost all of the gold was contained in the bedrock and very little in the gravels.

MINING CUTS A large cut 400 feet wide by 1200 feet long by 30 feet deep and a smaller cut 200 feet wide by 300 feet long

by 30 feet deep were mined in the creek valley during 1998. Two more cuts measuring 300 feet wide by 600 feet long by 25 feet deep and 100 feet wide by 300 feet long by 25 feet deep were mined in 1999.

WATER SUPPLY AND TREATMENT Water from Matson Creek was used to fill out-of-stream ponds that were constructed from old mine pits. The water was then pumped to the wash plant and the effluent flowed back into the old mine pits and was recycled 100%. Make-up water from Matson Creek was used.

GOLD The gold recovered in the creek bottom near Val D'Or in 1998 was reported to be mainly coarse. The gold from the left limit bench tended to be mainly fine and flat. The purity of the gold was approximately 890.

| MATSON CREEK | 115N/10 |
|--------------------------|------------------|
| Powers & Long | 63°32'N 140°41'W |
| Water Licence: PM99-004 | 2002 |
| Matson Creek Placer Area | Site no. 117 |

OPERATION/LOCATION Allan Radford with the help of two other miners and one camp personnel tested on Matson Creek main stem, downstream of forks on the left limit bench, at two sites. Testing then moved upstream onto the left fork valley bottom, then onto the right hand limit bench by the end of the air strip. A Caterpillar removed all of the equipment from the site in late fall leaving only the broken pump and processing plant on-site.

EQUIPMENT/FUNCTION A D10 bulldozer was used to strip overburden and a 235 excavator was used to dig test pits and feed the processing plant.

WATER SUPPLY AND TREATMENT Water was acquired from an out-of-stream reservoir at the upstream end of the first out settling pond. The effluent was treated in two out-of-stream settling ponds with a discharge back to Left Fork Matson Creek.



Gene Fowler's operation on Matson Creek.