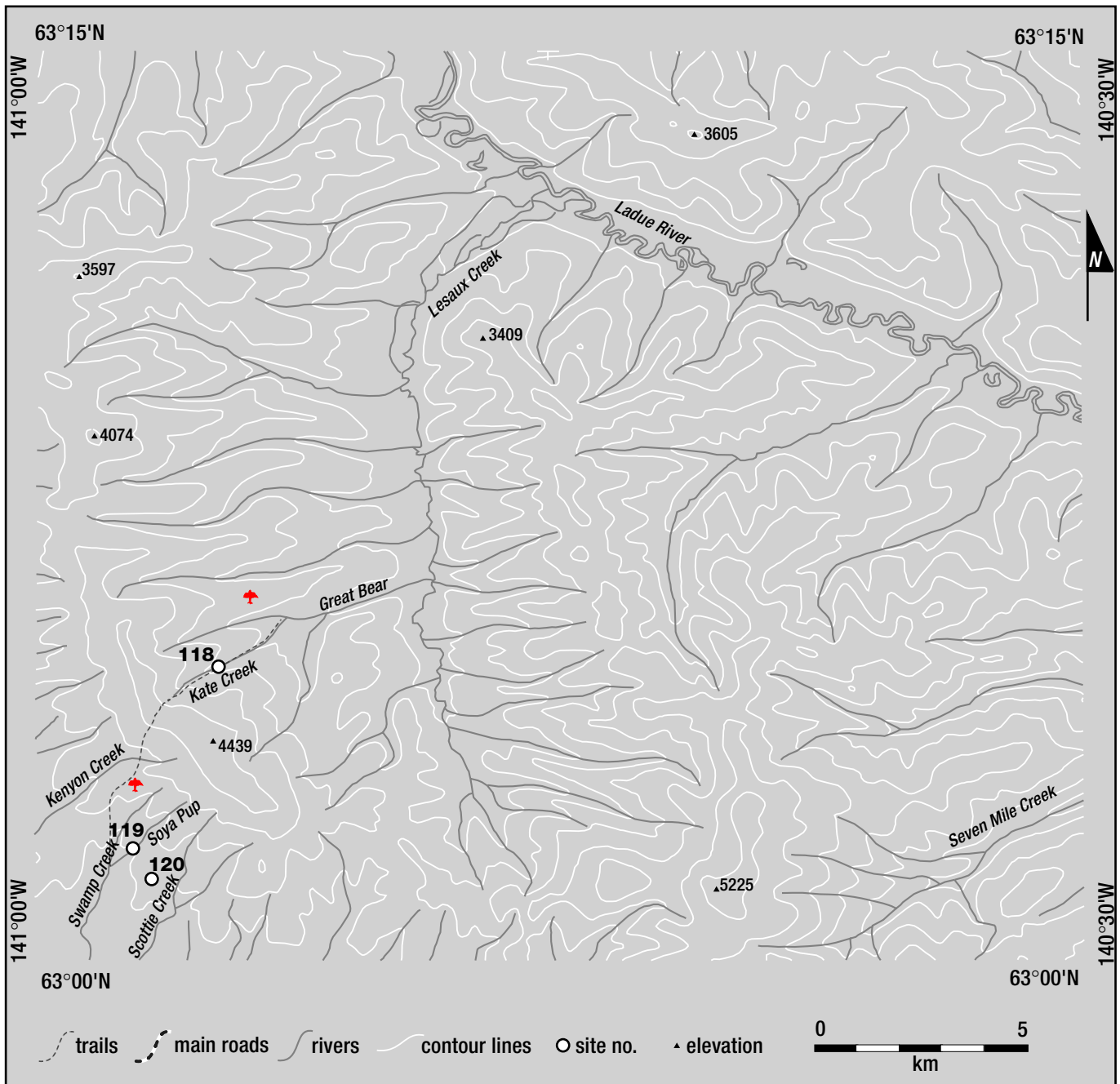


MOOSEHORN PLACER AREA

SITES
118-120



LEGEND

- 118..... Moosehorn Exploration, Kate Creek
- 119..... Moosehorn Exploration, Swamp Creek
- 120..... Glen Hartley, Unnamed tributary of Swamp Creek

KATE CREEK 115N/2

Moosehorn Exploration 63°05'N 140°53'W
 Water Licence: PM99-044 1999, 2000, 2001
 Moosehorn Placer Area **Site no. 118**

OPERATION/LOCATION Two to four miners plus one camp personnel worked one 11-hour shift on Kate Creek and Roo Pup.

EQUIPMENT/FUNCTION A 980C loader was used to feed the processing plant and remove tailings. A D8H bulldozer was used to strip overburden, stockpile pay materials and construct dams.

WASH PLANT The processing plant consisted of a wet dump box with a ¾-inch grizzly with a three-run sluice with hydraulic riffles.

GROUND DESCRIPTION One foot of moss and 8 feet of gravel covered 51 feet of pay gravels.

WATER SUPPLY AND TREATMENT Water was acquired by a pump from an in-stream reservoir with approximately 95% re-circulation. Effluent is treated in an in-stream settling pond.

SWAMP, SOYA AND DIANA CREEKS 115N/2

Moosehorn Exploration 63°02'N 140°57'W
 Water Licence: PM98-018 1999, 2000, 2001, 2001
 Moosehorn Placer Area **Site no. 119**

OPERATION/LOCATION Two to four miners and one camp personnel worked these creeks in a single 11-hour shift.

EQUIPMENT/FUNCTION D8H and D7 bulldozers were used for trenching and road building. A 225LC excavator was used

for trenching and test pits. A 966C loader was used to feed the processing plant.

WASH PLANT The processing plant consisted of a wet dump box, a ¾-inch grizzly and sluice run with hydraulic riffles.

GROUND DESCRIPTION The ground varied with zero to 30 feet of black muck and four to 30 of pay gravels on bedrock.

WATER SUPPLY AND TREATMENT Water was acquired by a pump from an in-stream reservoir with approximately 95% re-circulation. The effluent was treated in a number of in-stream settling ponds.

UNNAMED TRIBUTARY OF SWAMP CREEK 115N/2

Glen Hartley 63°02'N 140°56'W
 Water Licence: PM97-012 1998, 1999, 2000
 Moosehorn Placer Area **Site no. 120**

OPERATION/LOCATION Two miners and one camp personnel mined this site.

EQUIPMENT/FUNCTION Two Terex 82-40 bulldozers, a Case 1150 track loader and a Insley H1500C excavator were used to mine this site.

WASH PLANT A 5 by 10 screen deck classified material to ¾-inch minus with a 4-foot by 16-foot sluice run.

GROUND DESCRIPTION Two metres of black muck covered 1 metre of gravel.

WATER SUPPLY AND TREATMENT Water was acquired from an in-stream reservoir with 90% re-circulation. The effluent is treated in a series of three in-stream settling ponds.



Moosehorn Exploration, Swan, Soya and Diana creeks.