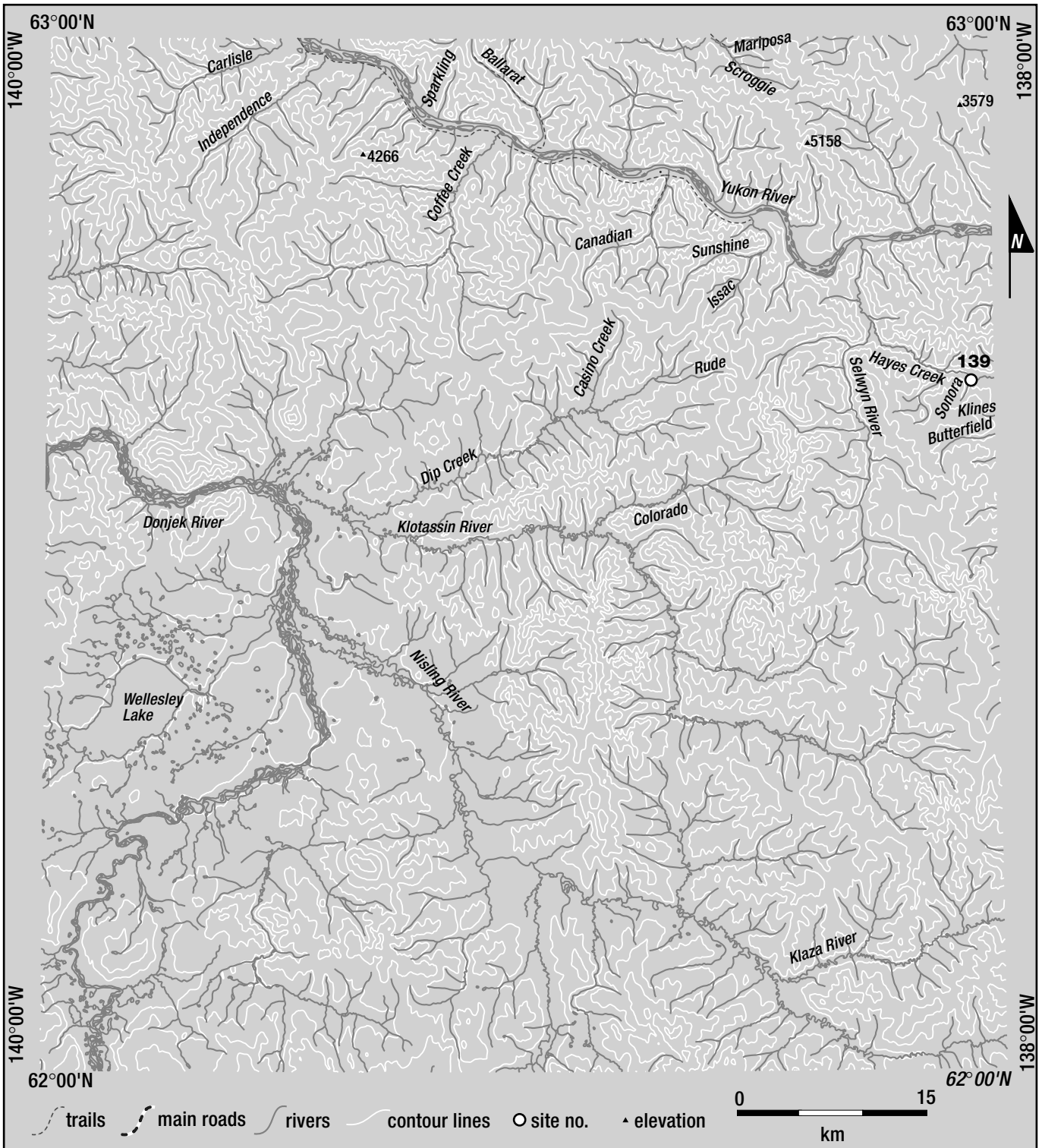


# SELWYN PLACER AREA

**SITE  
139**



## LEGEND

139..... George Wilson, Sonora Gulch

**SONORA GULCH****115J/9**

George Wilson

62°38'N 138°01'W

Water Licence: PM99-116

2000, 2001, 2002

Selwyn Placer Area

**Site no. 139**

**OPERATION/LOCATION** George Wilson worked this site in the 2000 season on his own. The left limit of Sonora Gulch in the V valley was being stripped, with the settling facilities located on the lower reach alluvial fan.

**EQUIPMENT/FUNCTION** A bulldozer was used to strip overburden and stockpile pay materials, with an excavator feeding the processing plant.

**WATER SUPPLY AND TREATMENT** There is one settling pond at the mouth of the V valley. Water was taken by pump from Sonora Gulch. A discharge from the settling pond has not been observed.

**COMMENTS** The majority of work at this site has been in ground preparation for mining, moving materials, camp and equipment on-site. This is an extremely isolated site accessible by winter road or by air only. Mr. Wilson made a considerable effort to clean this site up from the garbage and materials left by previous miners.



*George Wilson's operation on Sonora Gulch.*