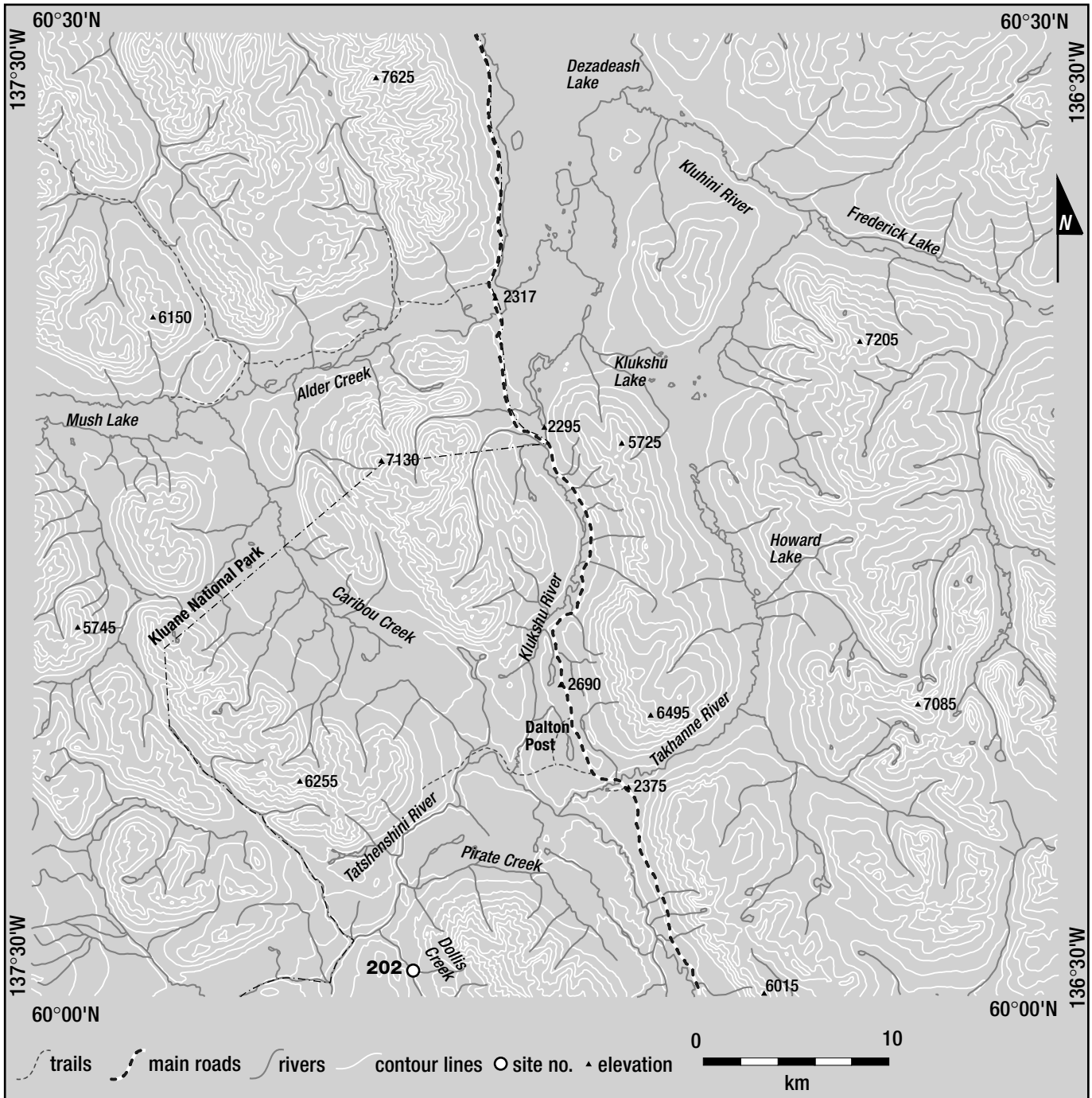


# DOLLIS CREEK

## PLACER AREA

**SITE  
202**



**LEGEND**

202 ..... Jerry Reid, Dollis Creek

**DOLLIS CREEK****115A/03**

Jerry Reid

60°02'N 137°10'W

Water Licence: PM97-074

1998, 1999, 2000

Dollis Creek Placer Area

**Site no. 202**

**OPERATION/LOCATION** The operation is located above the waterfalls on Dollis Creek. Mr. Reid spent the first part of the 1998 mining season constructing the diversion on Dollis Creek and the settling facility. Mining commenced towards the end of the 1998 season and the site was also mined during 1999 and 2000.

**EQUIPMENT/FUNCTION** Three R20 rock trucks were used to transport the pay material to the trommel which was located on a bench on the right limit. A Yutani excavator was used to load the rock truck and do minor stripping. A 988 Caterpillar loader was also used for a variety of functions.

**WASH PLANT** The wash plant used on this operation was a 7½-foot diameter by 60-foot long trommel.

**GROUND DESCRIPTION** The use of the bench on the right limit provided ample area for the set up of the camp and trommel. Dollis Creek was diverted up against a bench on the left limit and the settling facility and cut were made on the right limit. Glacial till with 3-foot to 10-foot boulders comprised the pay zone which was located over 3 feet to 6 feet of false bedrock (clay).

**MINING CUTS** One cut, 100 feet wide by 350 feet long by 12 feet deep, was made on the right limit between 1998 and 2000.

**WATER SUPPLY AND TREATMENT** Water was obtained from the settling ponds and was recycled. Make-up water was obtained from Dollis Creek. An International powered pump, capable of producing 1250 gallons per minute, was used to supply water to the trommel. Two settling ponds, 150 feet by 150 feet each, were used.

**GOLD** The gold obtained was generally smooth and rice-size, mixed with some rougher nuggets. Fineness was 960.