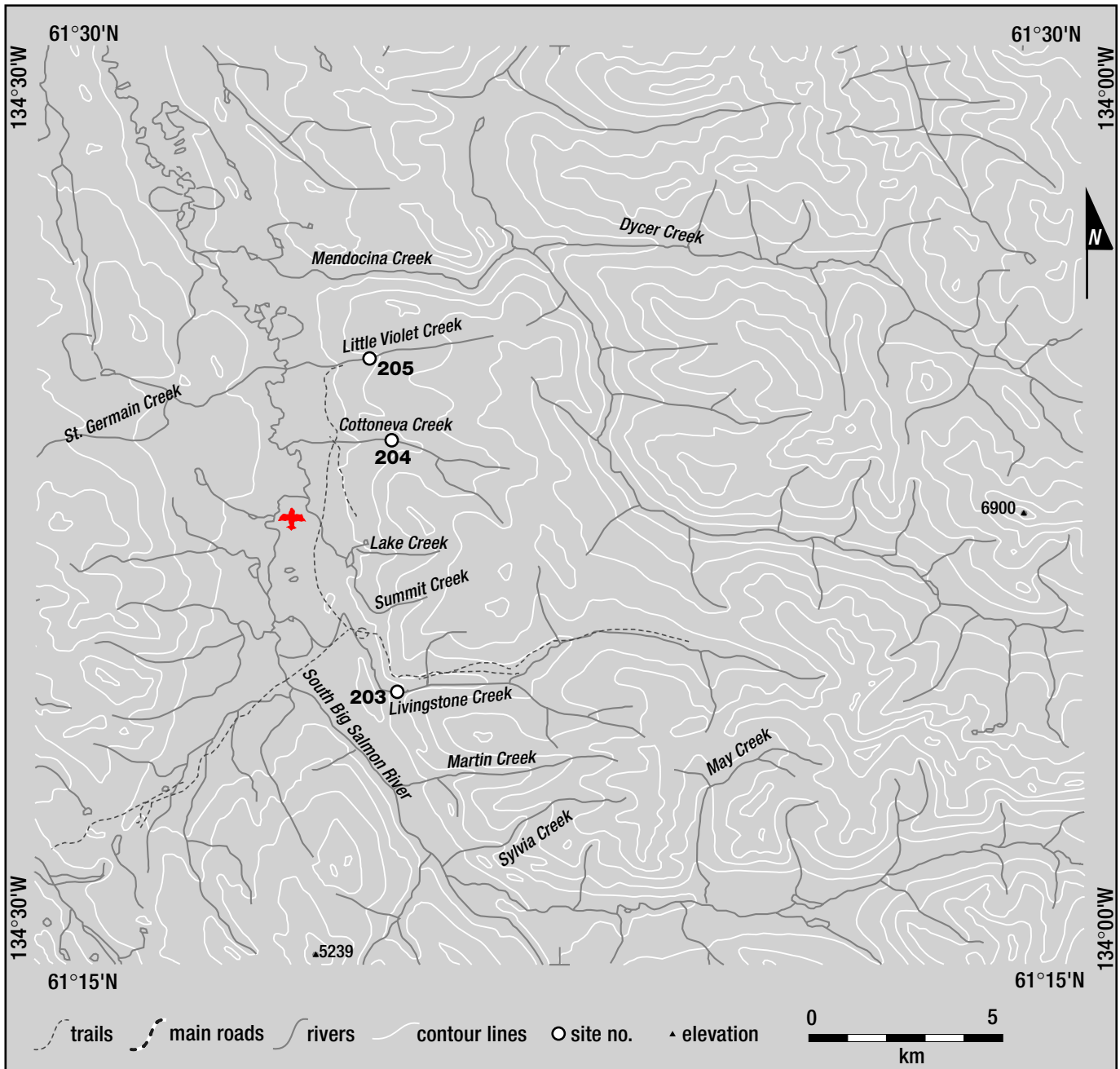


LIVINGSTONE PLACER AREA

SITES
203-205



LEGEND

- 203 Max Fuerstner, Livingstone Creek
- 204 Max Fuerstner, Cottoneva Creek
- 205 Agamemnon Fishing Co. Ltd., Little Violet Creek

LIVINGSTONE CREEK

105E/8

Max Fuerstner 61°20'N 134°16'W
 Water Licence: PM97-065 1998, 1999
 Livingstone Placer Area **Site no. 203**

OPERATION/LOCATION Max Fuerstner, with one other miner and one camp personnel, worked in-stream on Livingstone Creek.

EQUIPMENT/FUNCTION A D-9 bulldozer was used to strip overburden with a 7-yard excavator feeding the wash plant. A 966 Caterpillar loader was used for tailings removal and yard work.

GROUND DESCRIPTION Pay gravels removed from the right limit of Livingstone Creek were processed instream, with overburden stockpiled on the right limit.

MINING CUTS One continuous cut was mined on the right limit of Livingstone Creek.

WATER SUPPLY AND TREATMENT Total creek flow of Livingstone Creek was diverted into a large settling facility located on the Ghost Claims on the left limit, immediately downstream of the mine area. A discharge from the settling facility did not occur.

COMMENTS All equipment and materials have been removed from the site. Restoration work has been completed. This licence and approval expires on May 1, 2003 and should be able to be signed off at that time.

COTTENEVA CREEK

105E/8

M. Fuerstner 61°24'N 134°19'W
 Water Licence: PM97-058 1998, 1999, 2000, 2001
 Livingstone Placer Area **Site no. 204**

OPERATION/LOCATION Mr. Fuerstner with the assistance of one to two other miners and one camp personnel mined Cotteneva Creek from 1998 to 2000. In 2001, the final restoration work was finished early in the season and the site was signed off and abandoned.

EQUIPMENT/FUNCTION An Hitachi excavator was used to load two Terex rock trucks which stockpiled the pay materials at the processing plant. The excavator then fed the processing plant. A Terex bulldozer and loader were used for removing tailings, stripping overburden and pushing to the excavator.

WATER SUPPLY AND TREATMENT Water was acquired from a small instream reservoir using a pump which fed the wash plant. The effluent flowed down the mined-out reach of Cotteneva Creek and then was diverted into a series of natural sink holes to the final constructed settling pond adjacent to the South Big Salmon River. There was not a discharge to the South Big Salmon River.

LITTLE VIOLET CREEK

105E/8

Agamemnon Fishing Co. Ltd. 61°25'N 134°21'W
 Water Licence: PM98-021 1998, 1999, 2000, 2001
 Livingstone Placer Area **Site no. 205**

OPERATION/LOCATION Wilf Phillips and his wife spent two weeks on the site in 1998 preparing an area on the left limit of Little Violet Creek to place a camp for the next season. In the 1999 season, Wilf Phillips, two mechanics and two camp personnel spent the late summer bringing a camp and equipment on-site. Equipment repairs took up the majority of the season. In 2000, three miners and two camp personnel worked a 12-hour shift. In 2001, again three miners and two camp personnel worked a 10 to 12-hour shift, repairing equipment, upgrading settling facilities and removing overburden. The wash plant was not used in the 2000 season. In 2002, three miners and two camp personnel worked a 12-hour shift doing equipment repairs and sluicing for the last month. On the last day on-site, the generator caught fire and burned the shop to the ground with substantial loss which will require cleanup, rebuilding and reorganization in the 2003 season.

EQUIPMENT/FUNCTION A Proclaim shovel, Hitachi UH16 excavator and two Volvo 861 ore trucks removed overburden from the site and hauled pay gravels to the processing plant. A 950 and a 966C loader fed the processing plant and removed tailings. A D8K or D9H bulldozer was used for various activities as required.

WASH PLANT The processing plant was a Torgerson 2½-inch screen plant onto a ¼-inch screen deck. The ¼-inch minus goes into a 20-inch Knelson concentrator with tailings being run through the sluice box.

GROUND DESCRIPTION There is 10 feet of glacial till over 2 feet of fine orange sand, followed by 10 feet of blue clay, with 30 feet of gravel on bedrock.

WATER SUPPLY AND TREATMENT Water is acquired by gravity feed through a 6-inch pipe with 80 feet of head. Effluent flows into natural sink holes and percolates into the ground without a discharge.

GOLD Fineness is 866.



Agamemnon Fishing Co. Ltd. on Little Violet Creek.