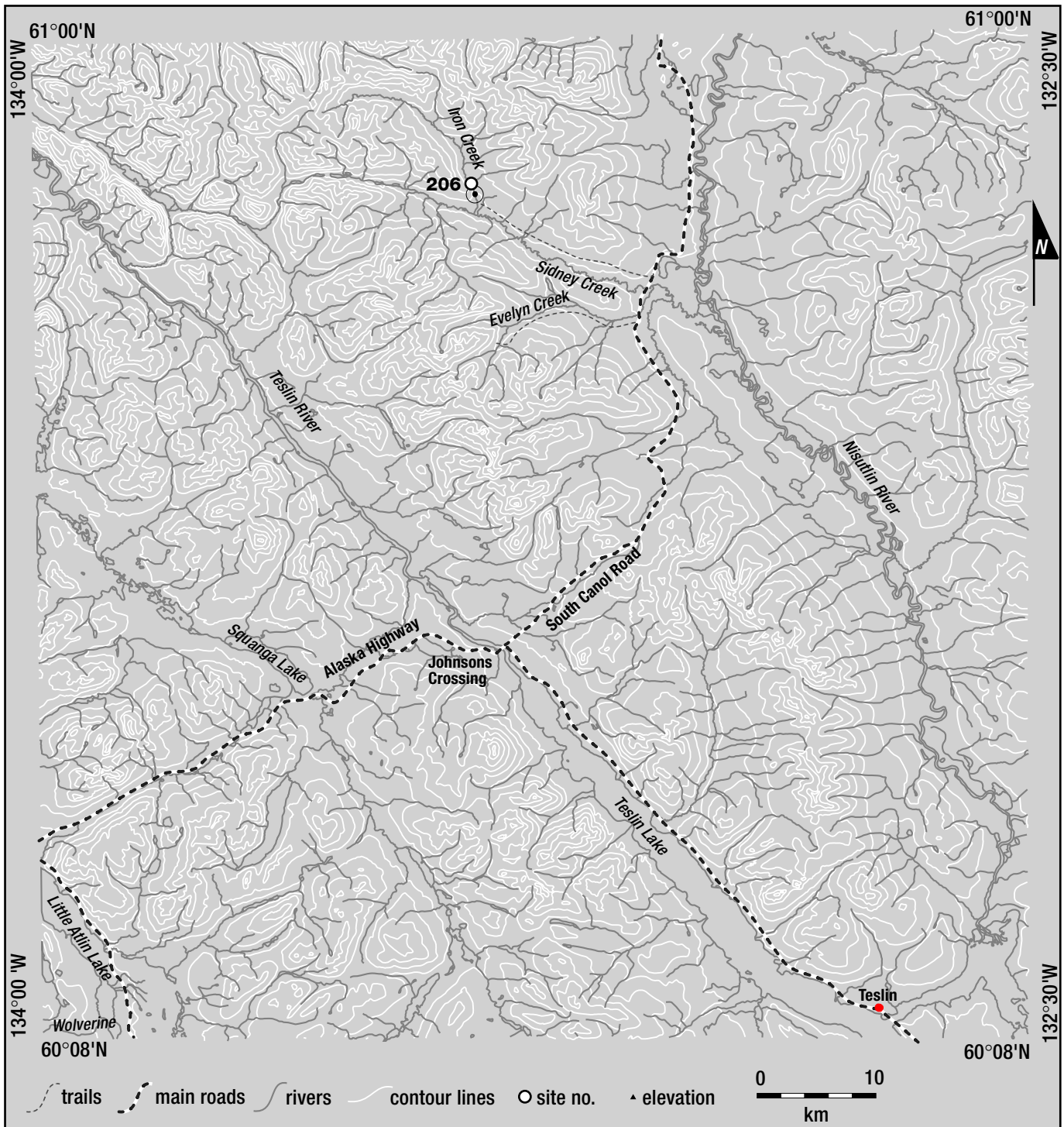


# SIDNEY CREEK PLACER AREA

SITES  
206



## LEGEND

206 .... Don and Ronald Edzerza, Iron Creek

**IRON CREEK**

**105C/14**

Don and Ronald Edzerza

60°55'N 133°19'W

Water Licence: PM01-234

2002

Sidney Creek Placer Area

**Site no. 206**

**OPERATION/LOCATION** One test pit was excavated on the left limit of Iron Creek, pay gravels were stockpiled and the test pit was used as a settling pond to sluice back into.

**EQUIPMENT/FUNCTION** A New Holland EC215 excavator was used to strip, stock pile pay gravels and feed the trommel.

**WASH PLANT** A 3-foot diameter trommel with a pipe grizzly and dump box was used to process pay materials.

**MINING CUTS** One test pit was excavated and processed in the 2002 season.

**WATER SUPPLY AND TREATMENT** A pump was used to supply trommel with water directly from Iron Creek. The effluent went back into the test pit and there was no evidence of a discharge.



*Operation on Iron Creek.*