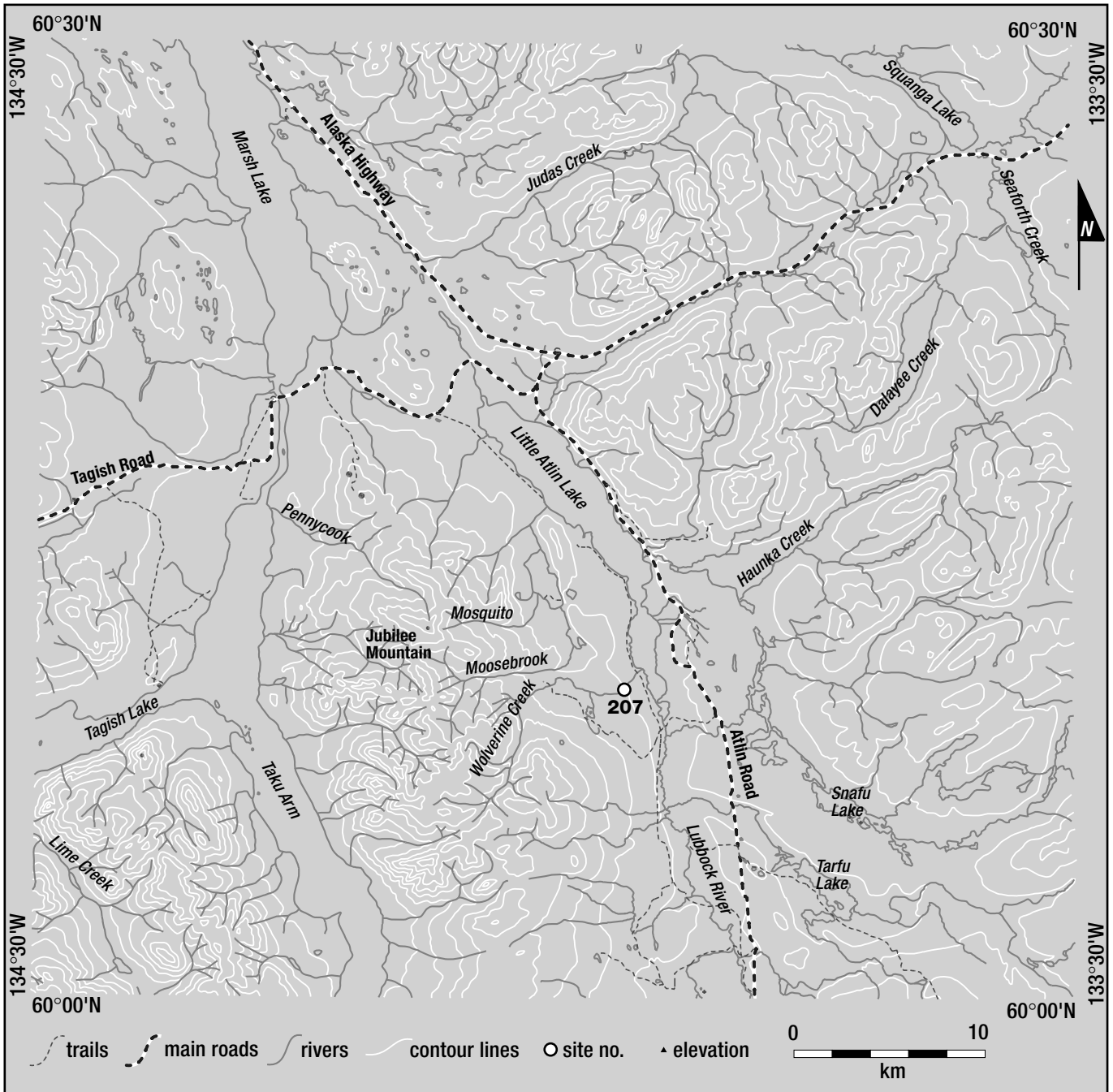


LITTLE ATLIN PLACER AREA

SITE
207



LEGEND

207 D. Hrehirchec & C. Cook, Wolverine Creek

WOLVERINE CREEK**105D/1**

D. Hrehirchec and C. Cook

60°10'N 134°00'W

Water Licence: PM01-257

1999, 2000, 2001, 2002

Little Atlin Placer Area

Site no. 207

OPERATION/LOCATION Two miners worked this site on a part-time basis. In 1999, some limited testing was done on the left limit. In 2000, mining took place on the left limit of Wolverine Creek, diverting the creek to the right limit. At the end of the 2000 season all restoration work had been accomplished and the site left in a stable manner. In 2001, the equipment was removed from the site due to little activity and PM98-067 expired. Under PM01-257, in the 2002 season, the equipment was returned to the site and a small test pit was dug on the left limit of Wolverine Creek, adjacent the camp.

EQUIPMENT/FUNCTION A small tire loader with a backhoe attachment was used for mining activity on the site.

WASH PLANT A dump box fed to a grizzly and then into a long tom.

WATER SUPPLY AND TREATMENT A gravity feed ditch from Wolverine Creek fed a small reservoir. A pump with intake in the reservoir fed the processing plant. Effluent was treated in a small settling pond prior to flows returning to Wolverine Creek.



D. Hrehirchec and C. Cook operation on Wolverine Creek.