

**REPORTED INCIDENTS, CONVICTIONS,
INCARCERATION AND SENTENCING IN RELATION
TO ILLEGAL DRUGS IN CANADA**

**PREPARED FOR THE SPECIAL SENATE
COMMITTEE ON ILLEGAL DRUGS**

**Gérald Lafrenière
Law and Government Division**

**Emmanuel Préville
Economics Division**

23 May 2002



Library of
Parliament
Bibliothèque
du Parlement

**Parliamentary
Research
Branch**



CANADA

LIBRARY OF PARLIAMENT
BIBLIOTHÈQUE DU PARLEMENT

REPORTED INCIDENTS, CONVICTIONS, INCARCERATION AND SENTENCING IN RELATION TO ILLEGAL DRUGS IN CANADA

INTRODUCTION

This paper provides a brief overview of Canadian statistics dealing with reported incidents, convictions, incarceration and sentencing in relation to illegal drug offences in Canada. Most of the information contained in it was obtained from publications prepared by the Canadian Centre for Justice Statistics.

Some of the information presented in this paper must be carefully interpreted. While it would be easy to use this information as a basis for drawing conclusions in relation to drug use and the demand for illegal drugs in Canada, it is generally thought that crime statistics reported by police are a reflection of police activity. Thus, these numbers often relate to changes in police tactics and priorities, and are not generally reflective of societal changes. This is especially true for police reported drug-related statistics. Nonetheless, it would be difficult to conduct a comprehensive review of Canada's illegal drug policy without at least briefly examining some of the crime statistics dealing with illegal drug use in Canada.

This paper forms part of a series of papers prepared by the Parliamentary Research Branch of the Library of Parliament for the Special Senate Committee on Illegal Drugs.

REPORTED INCIDENTS⁽¹⁾ AND CHARGES

As is clear from Figure 1, incidents reported by police according to the most serious crime reveal that, from 1983 to 1995, incidents related to drug offences were relatively

(1) According to the Canadian Centre for Justice Statistics, these are incidents that come to the attention of the police and are captured and forwarded to the Canadian Centre for Justice Statistics according to a nationally-approved set of common crime categories and definitions. The Canadian Centre for Justice Statistics warns that crime statistics may be influenced by many factors including reporting by the public to the police, reporting by the police to the Canadian Centre for Justice Statistics, the impact of new initiatives such as changes in legislation, polices or enforcement practices, and social, economic and demographic changes. In addition, the survey counts only the most serious offence committed in each criminal incident, which consequently underestimates the total number of drug-related incidents.

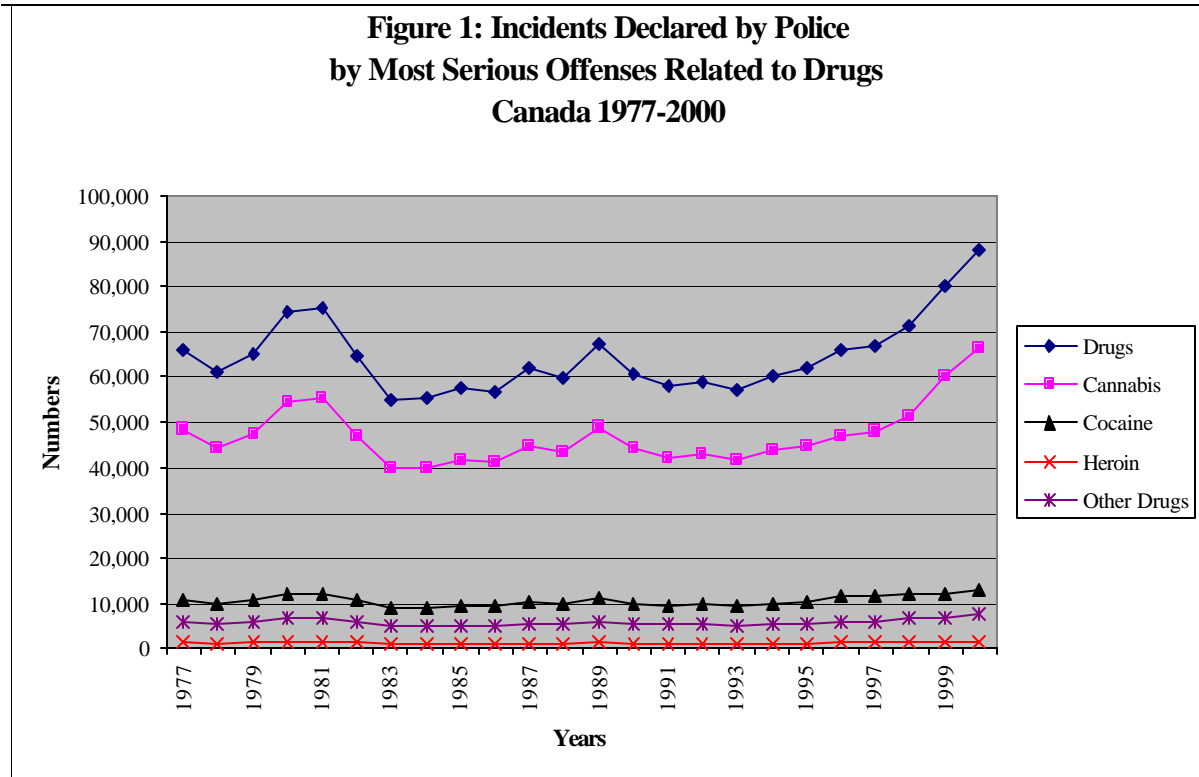
stable, hovering around 60 000 per year. However, from 1995 to 2000, there has been an increase of approximately 50%, with the number of reported incidents reaching nearly 88 000. In fact, the rate of drug offences increased by 9% in 2000 in relation to the previous year.

Much of this increase can be attributed to cannabis-related offences. These offences account for the majority of all drug-related offences in Canada. In 2000, cannabis-related offences accounted for just over 66,000 of reported incidents, thus 75% of all drug-related incidents. This percentage has been relatively stable over the years. Of this number (66,000), 68% (over 45,000) were for possession of cannabis, 16% for trafficking, 14% for cultivation, and 2% for importation.⁽²⁾ This means that over 50% of reported incidents in relation to drug-related offences are for possession of cannabis.

In recent years, the cultivation of cannabis, particularly in British Columbia, has raised concerns. A report by the Canadian Centre for Justice Statistics states the following: “The illegal cultivation of cannabis, particularly in cases where it is being grown without landowners’ consent, has recently become an important issue. This type of offence has also seen an increase over the past decade: from a rate of 5 incidents per 100,000 population in 1990 to 29 in 2000.”⁽³⁾

(2) Canadian Centre for Justice Statistics, *Crime Statistics in Canada, 2000*, Juristat, Catalogue no. 85-002-XIE Vol. 21, no. 8 p. 11.

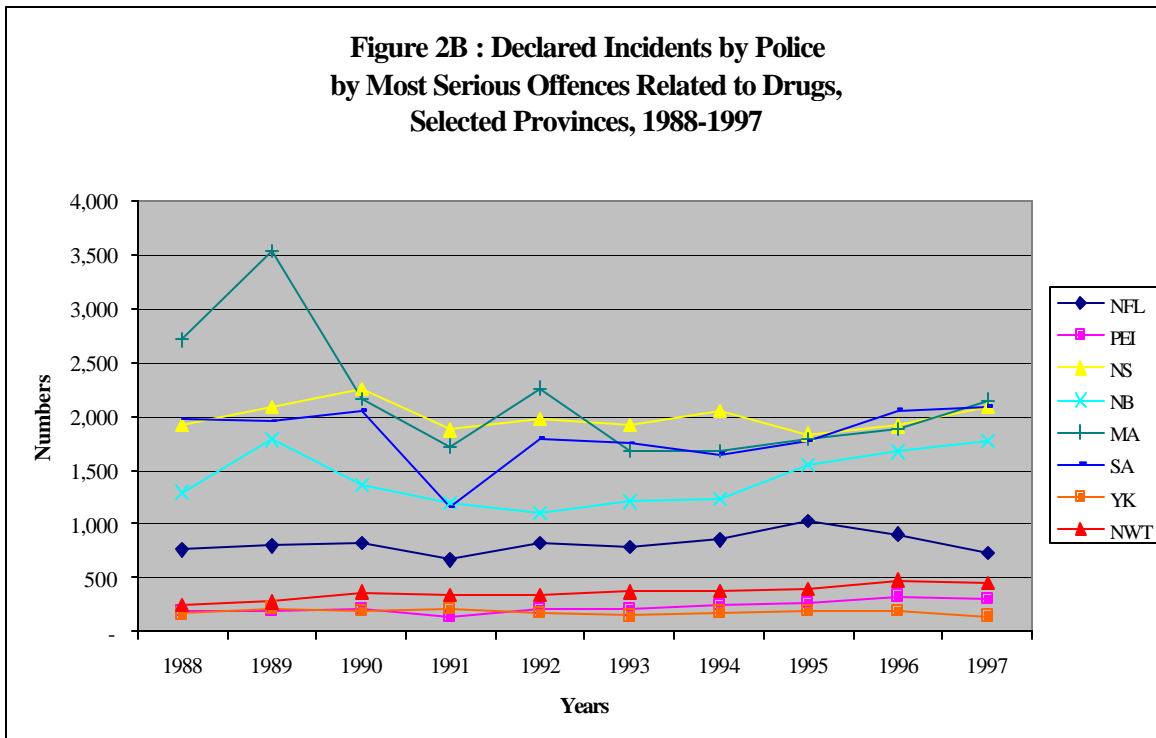
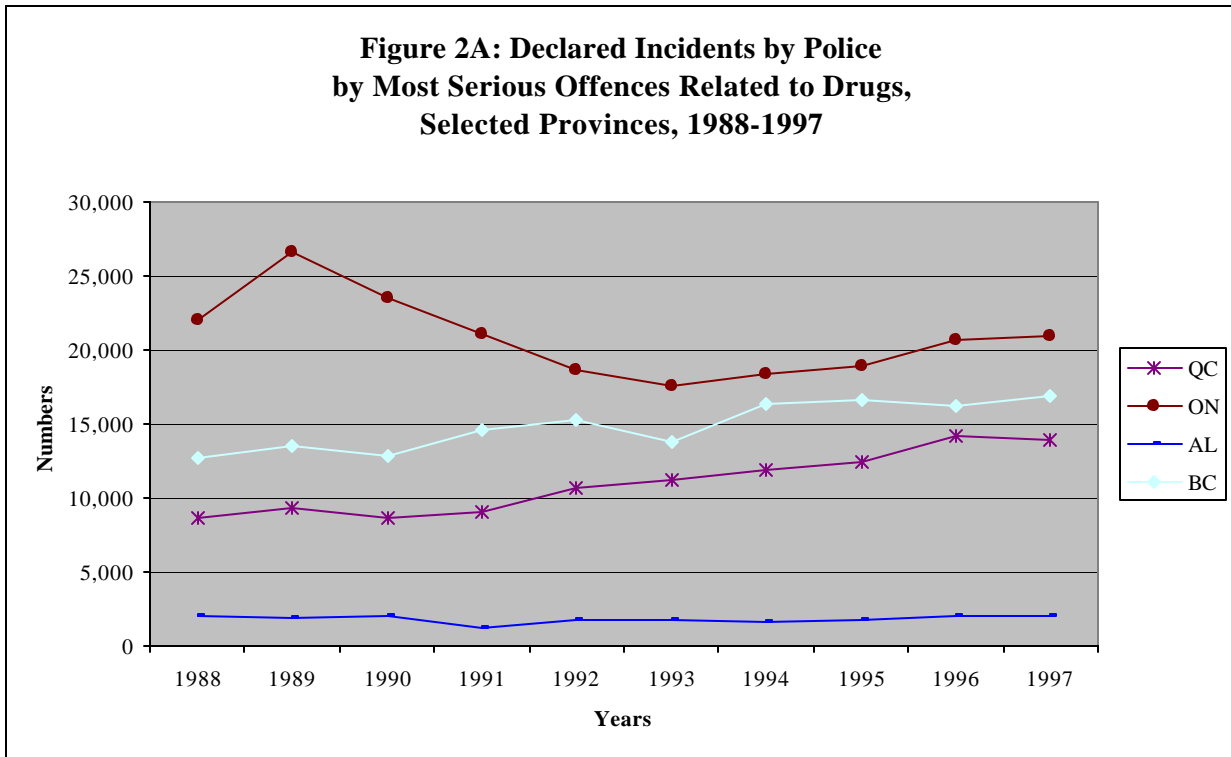
(3) *Ibid.*



Source: Statistics Canada, Catalogue 85-205

Figures 2A and 2B provide information on the location of reported incidents from 1988 to 1997. Not surprisingly, the most populated provinces are at the top, with Ontario in the lead followed by British Columbia, Québec and Alberta. British Columbia has historically had the highest provincial rate of drug crime in the country.⁽⁴⁾ For example, in 1997, the rate was 426 incidents per 100,000 population, almost double the national figure of 222. In the same year, the province with the lowest reported drug crime rate was Newfoundland, with a rate of 132 incidents per 100,000 population.

(4) It should be noted that in 1997 the rate in both Yukon and N.W.T. was even higher than British Columbia's.



Source: Statistics Canada, Catalogue 85-002

From the available data (see figure 3), it would seem that total charges for drug-related offences have declined noticeably since 1997. The reader should be aware that the number of reported incidents (discussed previously) is not equivalent to the number of charges that are laid by the police. In some cases, the police will report a drug incident but will decide not to charge the offender. It is important to note that figure 3 does not include data from three of the provinces (New Brunswick, Manitoba and British Columbia) and from one of the Territories (Nunavut). In addition, data from certain courts in Québec is not included. Also, the data prior to 1995 is based on approximations made from the average distribution of charges during the period covering the years 1995 to 2000.

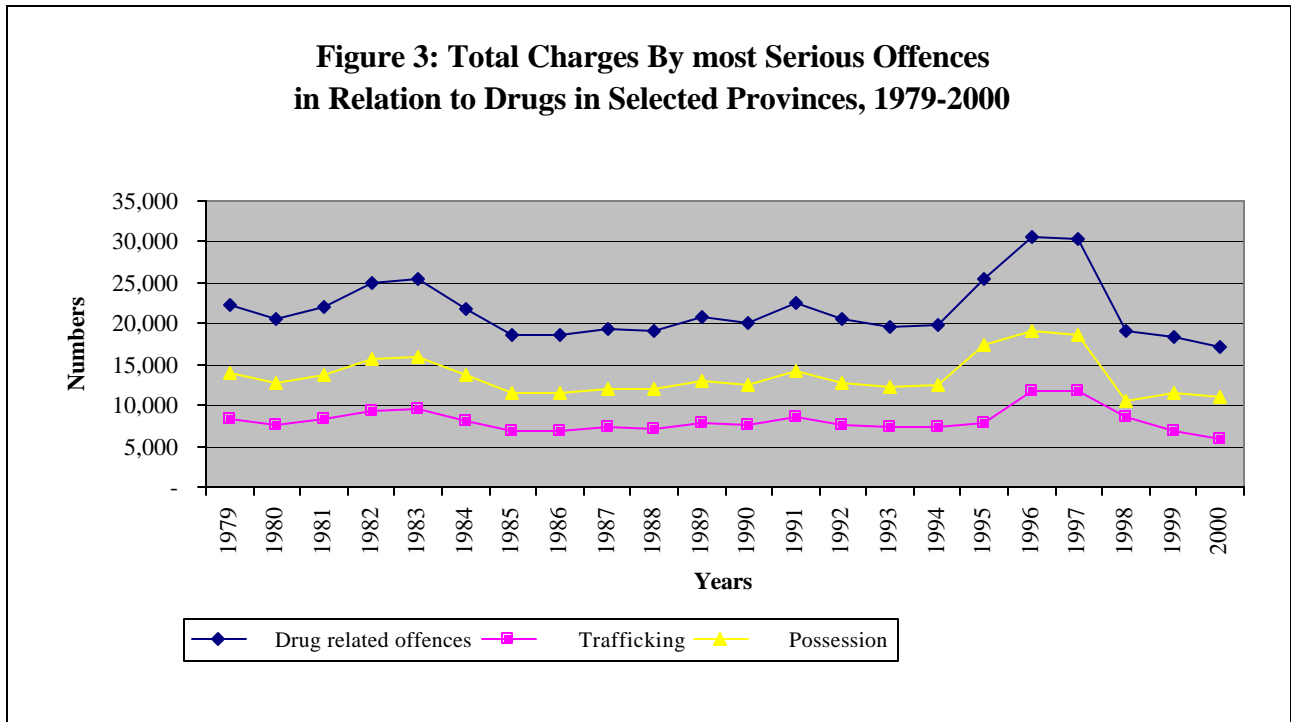
Because the province of British Columbia is not included, it is clear that the actual number of drug charges in Canada would be much higher than what is found in figure 3. As was previously explained, British Columbia has, in the past, consistently reported the highest rate of drug crime. Statistics in 1997 show, however, that with respect to charging drug offenders, the province of British Columbia is more lenient than other provinces: “Among provinces and territories, police departments in British Columbia reported the lowest charge rate (47%) for drug offences. Only 35% of cannabis incidents and 36% of “other drug” incidents resulted in charges, compared to 79% and 81% for all the other provinces combined.”⁽⁵⁾

With respect to cannabis offences in the year 2000, the male population is much more likely to be charged with an offence. For both youth (12 to 17) and adults, 87% of the people charged with cannabis offences are male.⁽⁶⁾ In addition, adults are much more likely to be charged than youths (83% of the people charged are adults).⁽⁷⁾

(5) Canadian Centre for Justice Statistics, *Illicit Drugs and Crime in Canada*, Juristat, Catalogue no. 85-002-XIE Vol. 19, no. 1 p. 5. In this case “other drugs” means: 1) illegal drugs other than cannabis, cocaine or heroin and 2) controlled drugs.

(6) *Crime Statistics in Canada, 2000*, *Supra* note 2 at p. 19.

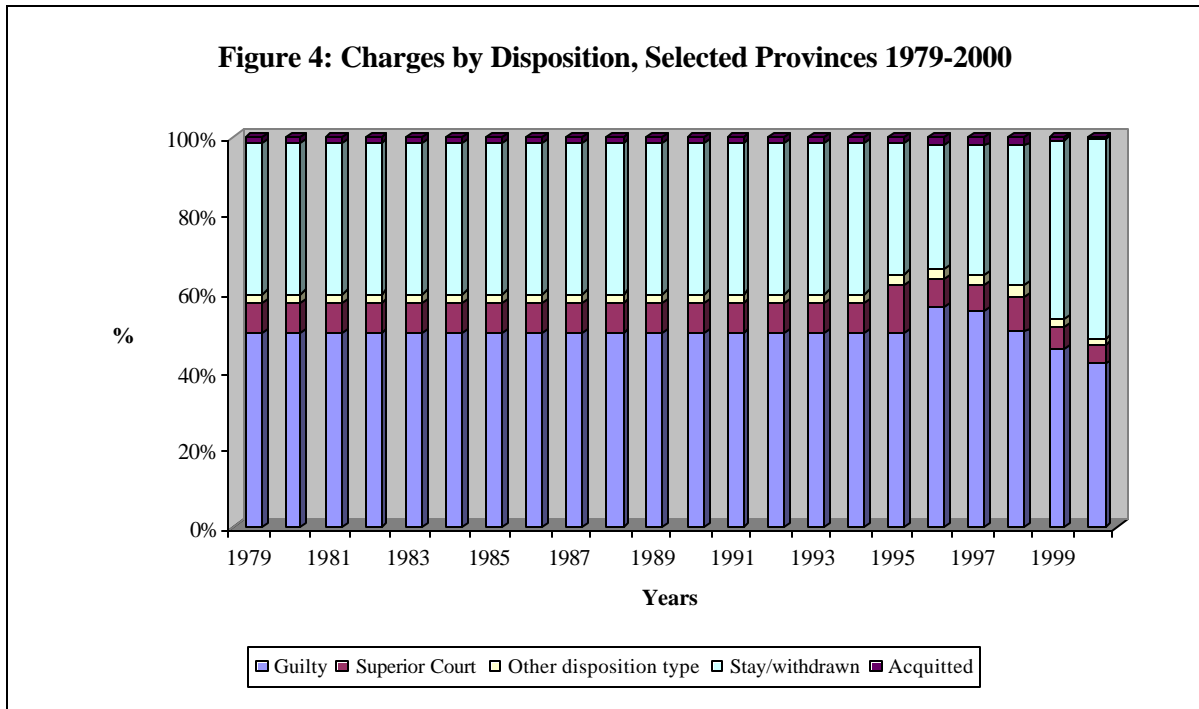
(7) *Ibid.*



Source: Statistics Canada, Table 252-0004

CONVICTIONS

Figure 4 details the outcome of those charged with drug offences in selected provinces. It would appear that from 1995 to 2000, there has been a fairly significant increase in the percentage of accused having their charges stayed or withdrawn. Not surprisingly, this has resulted in a lower percentage of accused being found guilty of drug offences once they have been charged. Again, it is important to note that figure 4 does not include data from three of the provinces (New Brunswick, Manitoba and British Columbia) and from one of the Territories (Nunavut). In addition, data from certain courts in Québec is not included. Also, the data prior to 1995 is based on approximations made from the average distribution of charges during the period covering the years 1995 to 2000.



Source: Statistics Canada, Table 252-0003

INCARCERATION

As of 31 December 2000, 5,779 convicted drug offenders were under federal jurisdiction (either serving their sentence: 1) in a federal institution or 2) on conditional release). Of these, 3,890 were serving sentences for trafficking, 621 for importation, 225 for cultivation and 2,221 for possession.⁽⁸⁾

Of the 5,779 convicted drug offenders serving their sentences on 31 December 2000, 2,548 were serving their sentences in federal correctional institutions: 1,613 for trafficking, 113 for importation, 82 for cultivation and 1,318 for possession.⁽⁹⁾ In addition, 3,231 were on conditional release: 2,312 for trafficking, 508 for importation, 145 for cultivation and 946 for possession.⁽¹⁰⁾

In the five-year period from 1995 to 2000, the total federal drug offender population has increased by almost 9%. Most of the growth is in relation to those on conditional

(8) Correctional Service Canada, Forum on Corrections Research, Volume 13, no. 3, September 2001, p. 25. Please note that possession for the purpose of trafficking is included in the trafficking numbers.

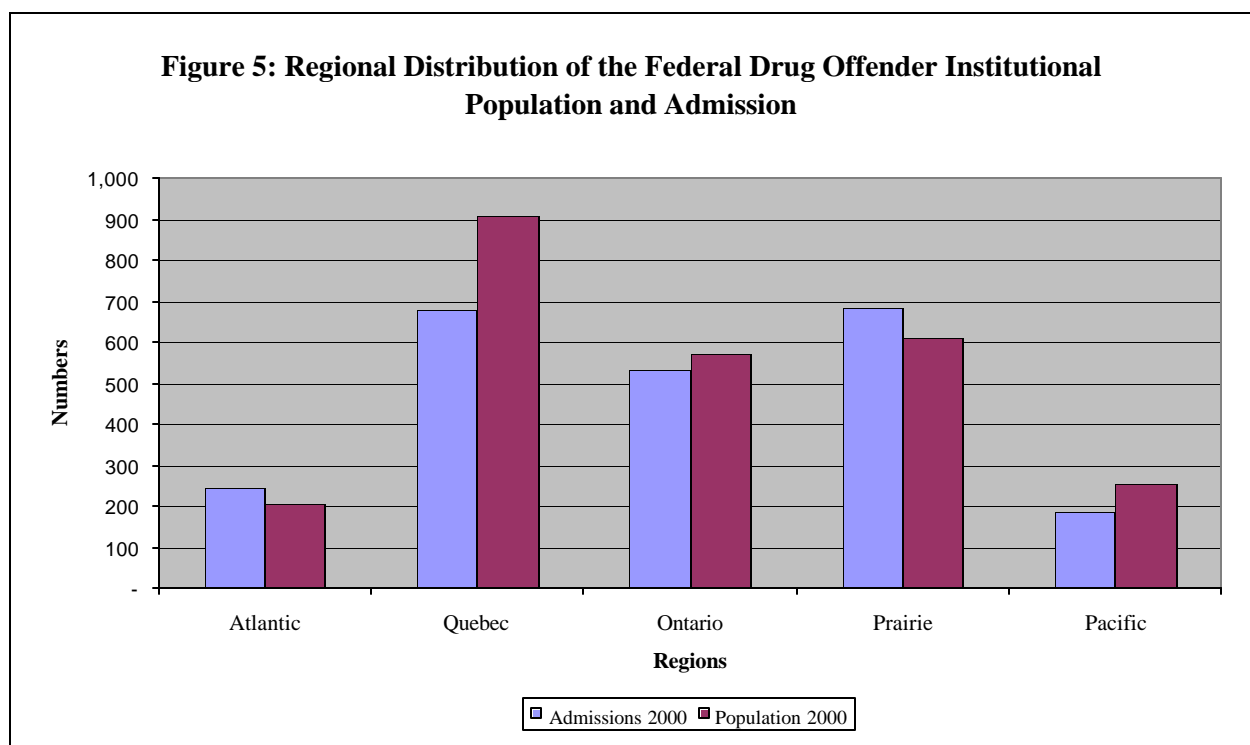
(9) *Ibid.* It should be noted that some offenders might be represented in more than one drug offence category.

(10) *Ibid.*

release as this population has increased by 19% over this period. At the same time, the number of those serving their sentence in institutions has decreased by 2%.⁽¹¹⁾

At the end of 2000, the average time served by drug offenders in federal custody was 2.2 years. With respect to conditional release, the average time served was 3.7 years. While this is less than the average for non-drug offences, it is interesting to note that the average time served in custody for possession offences was 2.52 years, while it was 1.89 years for trafficking, 1.48 years for importation and 0.88 years for cultivation. For those on conditional release, the average time served for importation was 4.6 years, while it was 3.6 years for possession, 3.5 years for trafficking and 2.2 years for cultivation.

Figure 5 provides details of the number of admissions by region in federal correctional institutions in relation to drug offences for the year 2000 and the number of inmates incarcerated in different regions of the country as of 31 December 2000. These numbers represent drug offenders who were sentenced to a term of two or more years.

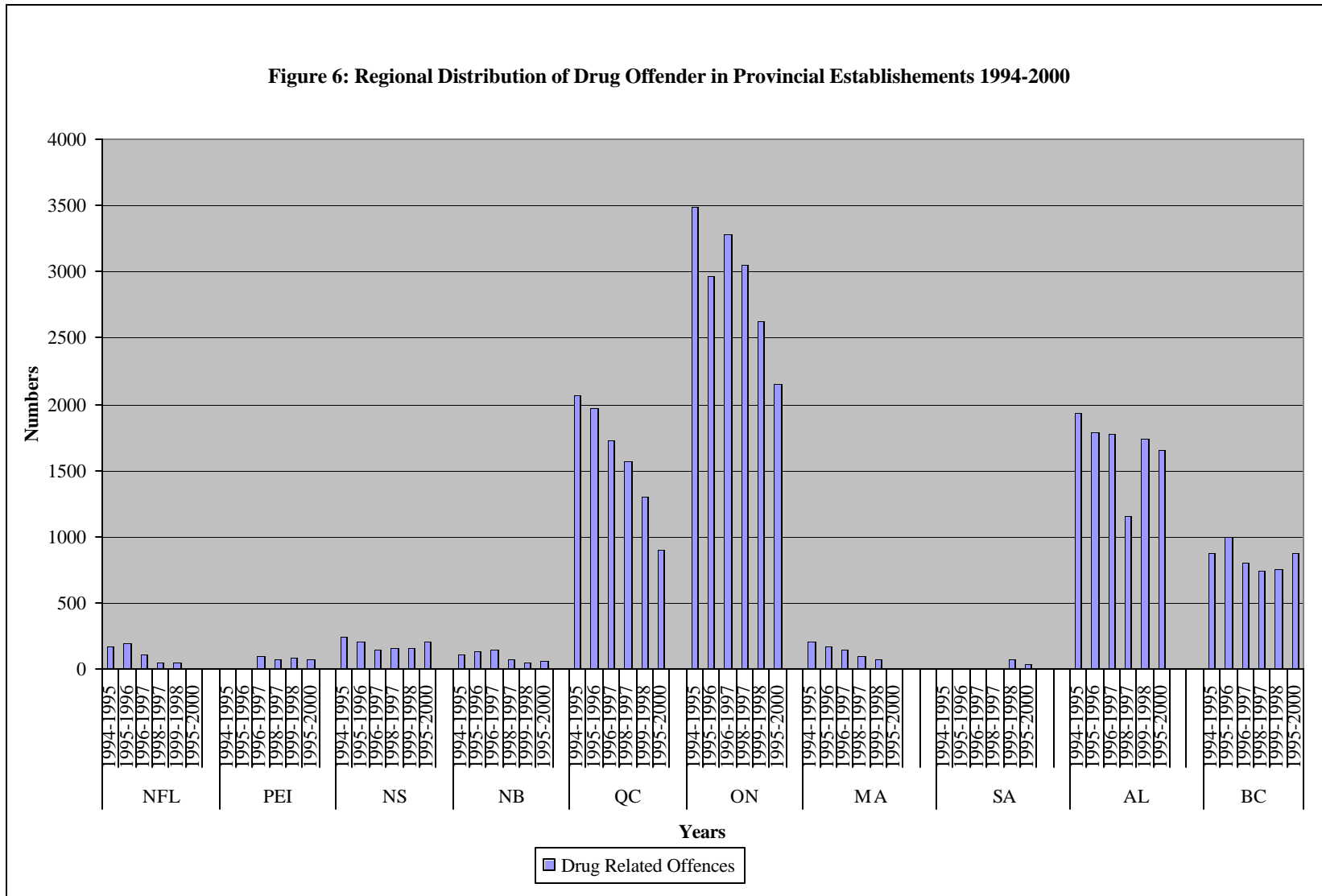


Source: Forum on Corrections Research, September 2001, Vol. 13, p.26.

(11) *Ibid.*

Figure 6 provides details of the number of admissions to provincial correctional establishments in relation to certain drug offences (trafficking and importation). These numbers represent drug offenders who were sentenced to a term of less than two years.

Figure 6: Regional Distribution of Drug Offender in Provincial Establishments 1994-2000



Source: Statistics Canada, Catalogue 85-211

SENTENCING

For the year 1996-97, 64% of persons convicted of drug trafficking were sentenced to imprisonment. The median sentence was four months. Probation was imposed as the most serious sentence in 24% of these cases and fines in 9%.⁽¹²⁾

With respect to possession, a fine was imposed in 63% of the cases, with a median amount of \$200. A fine was imposed as the most serious sentence in 55% of cases, probation in 22% and imprisonment in 13%.⁽¹³⁾

The data in this section does not include New Brunswick, Manitoba, British Columbia and the Northwest Territories.

(12) *Illicit Drugs and Crime in Canada*, *Supra* note 5, p. 7.

(13) *Ibid.*

APPENDIX 1

This section presents the data that was use to make the figures in this paper.

Canada	1977	1978	1979	1980	1981	1982	1983	1984
Drugs	65938	60747	64923	74196	75104	64636	54847	54950
Cannabis	48234	44437	47492	54275	54939	47282	40121	40197
Cocaine	10729	9884	10564	12073	12220	10517	8924	8941
Héroïne	1135	1046	1118	1278	1293	1113	944	946
Other	5826	5367	5736	6556	6636	5711	4846	4855

COND'

1985	1986	1987	1988	1989	1990	1991	1992	1993
57205	56251	61658	59430	66961	60645	57930	58888	56817
41846	41148	45104	43474	48983	44363	42376	43077	41562
9308	9153	10033	9670	10896	9868	9426	9582	9245
985	969	1062	1023	1153	1044	997	1014	978
5054	4970	5448	5251	5916	5358	5118	5203	5020

COND'

1994	1995	1996	1997	1998	1999	2000	Distribution Moyenne des Infractions DMI
60153	61613	65729	66593	70922	80142	87945	
44003	45071	47234	47933	50917	60011	66171	0.731511817
9788	10025	11478	11468	12183	11963	12812	0.162714235
1036	1061	1287	1235	1323	1323	1126	0.017218368
5315	5444	5730	5957	6509	6845	7736	0.088356365

Table 2: Incidents Declared by Police by Most Serious Offences Related to Drugs, Provinces, 1988-1997

	1988	1989	1990	1991	1992	1993	1994	1995	1996	1997
NFL	761	798	822	666	818	785	852	1027	904	730
PEI	189	187	209	136	209	204	246	262	330	305
NS	1924	2087	2252	1877	1969	1923	2055	1833	191	2086
NB	1295	1783	1364	1199	1096	1204	1237	1546	1672	1776
QC	8670	9303	8645	9088	10639	11185	11847	12391	14218	13902
ON	22041	26660	23532	21034	18619	17607	18330	18915	20688	20927
MA	2713	354	2165	1724	2262	1683	1682	1792	188	2149
SA	1967	1949	2051	1155	1791	1745	1651	177	2054	2087
AL	6672	6587	6195	5018	5685	6234	5286	4837	5226	5093
BC	12737	13539	12833	14616	15279	13728	16409	16651	16174	16868
YK	167	219	191	212	172	147	182	188	196	141
NWT	246	278	365	343	342	372	376	401	477	457

Table 3: Total Charges in relation to drugs in Selected Provinces, 1979-2000						
		Operations:				
		65938	60747	64923	74196	75104
Type of most serious ser	Type of offence	1979	1980	1981	1982	1983
Total charges	Drug related offences	22255.329	20503.267	21912.747	25042.561	25349.028
	Trafficking	8339.3233	7682.8062	8210.954	9383.7307	9498.5674
	Possession	13916.005	12820.461	13701.793	15658.83	15850.46
Prison	Drug related offences	8666.366	7984.1023	8532.9625	9751.7318	9871.0721
	Trafficking	5666.4391	5220.346	5579.2142	6376.0975	6454.1272
	Possession	2999.9269	2763.7562	2953.7483	3375.6343	3416.9448
Probation	Drug related offences	4308.1308	3968.9712	4241.8147	4847.6762	4907.0014
	Trafficking	1441.1737	1327.7166	1418.9893	1621.6646	1641.5103
	Possession	2866.9572	2641.2546	2822.8254	3226.0116	3265.4911
Fine	Drug related offences	7614.8276	7015.3467	7497.6107	8568.4999	8673.36
	Trafficking	703.59935	648.20816	692.76867	791.71734	801.40626
	Possession	6911.2282	6367.1386	6804.842	7776.7826	7871.9537
Restitution	Drug related offences	7.7337268	7.1248855	7.6146796	8.7022899	8.8087873
	Trafficking	4.4012591	4.0547679	4.3335094	4.9524678	5.0130754
	Possession	3.3324677	3.0701176	3.2811702	3.7498221	3.7957119
Other sentence type	Drug related offences	1233.6656	1136.5447	1214.6754	1388.1684	1405.1566
	Trafficking	308.41037	284.13062	303.66293	347.03533	351.2823
	Possession	925.25518	852.41403	911.0125	1041.1331	1053.8743
Sentence unknown	Drug related offences	424.60485	391.17764	418.06881	477.78188	483.62891
	Trafficking	123.99225	114.2309	122.08361	139.5209	141.22834
	Possession	300.6126	276.94673	295.9852	338.26098	342.40057

COND'

64636	54847	54950	57205	56251	61658	59430
1984	1985	1986	1987	1988	1989	1990
21815.879	18511.905	18546.67	19307.775	18985.782	20810.747	20058.755
8174.6565	6936.6203	6949.6469	7234.8417	7114.1872	7798.0223	7516.2423
13641.222	11575.285	11597.023	12072.933	11871.595	13012.725	12542.513
8495.2415	7208.6532	7222.1907	7518.57	7393.1838	8103.8368	7811.0063
5554.5506	4713.3244	4722.1758	4915.9612	4833.9784	5298.6336	5107.1685
2940.6909	2495.3288	2500.0149	2602.6088	2559.2054	2805.2032	2703.8378
4223.0633	3583.4883	3590.2179	3737.5508	3675.2202	4028.4924	3882.9236
1412.7165	1198.7633	1201.0145	1250.3009	1229.4498	1347.6279	1298.9316
2810.3467	2384.725	2389.2034	2487.2499	2445.7704	2680.8645	2583.992
7464.4666	6333.9872	6345.8821	6606.3001	6496.1277	7120.5532	6863.2534
689.70621	585.25151	586.35058	610.41283	600.23306	657.9291	634.15496
6774.7604	5748.7357	5759.5316	5995.8872	5895.8946	6462.6242	6229.0985
7.581018	6.4328871	6.4449678	6.7094519	6.5975593	7.2317347	6.9704174
4.3143526	3.6609521	3.6678272	3.8183449	3.7546669	4.1155758	3.9668602
3.2666654	2.7719351	2.7771406	2.891107	2.8428924	3.116159	3.0035572
1209.3058	1026.1587	1028.0858	1070.2757	1052.4268	1153.589	1111.9043
302.32055	256.53468	257.01644	267.5637	263.10157	288.39162	277.97064
906.98526	769.62406	771.06937	802.71198	789.32526	865.19737	833.93363
416.22068	353.18485	353.84811	368.36908	362.22584	397.04398	382.69687
121.54392	103.13633	103.33001	107.5704	105.77646	115.94398	111.75437

COND'

66961	60645	Ratio Charges/Infraction RCI				
1991	1992	1993	1994	1995	1996	1997
22600.611	20468.84	57930	58888	59846	60804	61762
8468.7044	7669.906	19552.476	19875.82	25346	30657	30348
14131.906	12798.934	7326.534	7447.6944	7914	11626	11746
8800.821	7970.6962	12225.942	12428.125	17432	19031	18602
5754.3515	5211.5806	7613.8582	7739.7701	10081	12962	11839
3046.4695	2759.1156	4978.2647	5060.5913	6358	8925	8053
4374.9697	3962.3069	2635.5935	2679.1788	3723	4037	3786
1463.5329	1325.4872	3784.9195	3847.5114	4488	5769	6712
2911.4368	2636.8197	1266.1469	1287.0854	1118	1935	2698
7732.9684	7003.5673	2518.7726	2560.4261	3370	3834	4014
714.5154	647.11976	6690.0264	6800.6607	9199	9730	9993
7018.453	6356.4475	618.14903	628.37148	347	513	734
7.8537123	7.1129221	6071.8774	6172.2893	8852	9217	9259
4.4695428	4.0479596	6.7944856	6.9068474	1	23	7
3.3841695	3.0649626	3.8667375	3.9306826	1	12	1
1252.8053	1134.6363	2.9277481	2.9761648	0	11	6
313.19522	283.65354	1083.8401	1101.7637	395	618	1695
939.61012	850.98275	270.95473	275.43556	27	68	226
431.19242	390.52081	812.88533	826.32817	368	550	1469
125.91594	114.0391	373.03769	379.20669	1182	1555	102
305.27648	276.48171	108.93371	110.73517	63	173	34

COND'

0.2691548	0.2285069	0.1939394
1998	1999	2000
19089	18313	17056
8522	6833	5973
10567	11480	11083
7314	7410	5765
5262	4401	3518
2052	3009	2247
4664	3063	2788
2151	938	706
2513	2125	2082
5887	6319	6650
755	877	821
5132	5442	5829
16	2	2
4	2	1
12	0	1
1097	1496	1737
296	604	894
801	892	843
111	23	114
54	11	33
57	12	81

Table 4 Charges, by disposition, fiscal year ending March 31, annual (Number)								
Type of offence	1979	1980	1981	1982	1983	1984	1985	
Drug related offences	43144.56	49306.93	49910.34	42953.84	36448.56	36517.01	38015.57	
Trafficking	20503.6	23432.15	23718.9	20412.96	17321.46	17353.99	18066.15	
Possession	22640.96	25874.79	26191.44	22540.87	19127.1	19163.02	19949.42	
Drug related offences	21471.2	24537.95	24838.24	21376.29	18138.89	18172.95	18918.72	
Trafficking	8045.502	9194.647	9307.17	8009.936	6796.846	6809.61	7089.058	
Possession	13425.7	15343.3	15531.07	13366.35	11342.04	11363.34	11829.66	
Drug related offences	3296.191	3766.988	3813.088	3281.619	2784.624	2789.854	2904.342	
Trafficking	2692.628	3077.218	3114.877	2680.725	2274.734	2279.006	2372.531	
Possession	603.5623	689.7695	698.2108	600.8942	509.8899	510.8474	531.8112	
Drug related offences	1029.057	1176.037	1190.43	1024.507	869.3477	870.9803	906.723	
Trafficking	515.8814	589.5652	596.7802	513.6009	435.817	436.6355	454.5538	
Possession	513.1751	586.4723	593.6494	510.9065	433.5307	434.3449	452.1692	
Drug related offences	16619.9	18993.74	19226.18	16546.43	14040.51	14066.87	14644.14	
Trafficking	8758.984	10010.04	10132.54	8720.263	7399.596	7413.492	7717.722	
Possession	7860.919	8983.7	9093.642	7826.169	6640.911	6653.382	6926.419	
Drug related offences	728.21	832.2208	842.4054	724.9908	615.1924	616.3477	641.6409	
Trafficking	449.7385	513.9749	520.2649	447.7503	379.9394	380.6529	396.2739	
Possession	278.4715	318.2458	322.1405	277.2405	235.2529	235.6947	245.367	
COND'								
	1986	1987	1988	1989	1990	1991	1992	1993
	37381.58626	40974.81	39494.19	44498.91	40301.62	38497.37	39134	37757.72
	17764.86053	19472.47	18768.83	21147.23	19152.55	18295.11	18597.66	17943.61
	19616.72573	21502.34	20725.36	23351.68	21149.07	20202.25	20536.34	19814.11
	18603.21524	20391.41	19654.57	22145.2	20056.39	19158.49	19475.32	18790.4
	6970.835157	7640.891	7364.789	8298.059	7515.356	7178.903	7297.622	7040.976
	11632.38009	12750.52	12289.78	13847.15	12541.03	11979.59	12177.7	11749.43
	2855.906456	3130.424	3017.307	3399.661	3078.993	2941.151	2989.789	2884.643
	2332.964166	2557.215	2464.811	2777.153	2515.202	2402.599	2442.332	2356.439
	522.9422894	573.2089	552.4961	622.5087	563.7915	538.5513	547.4574	528.2042
	891.6017109	977.3049	941.9902	1061.36	961.2484	918.2146	933.3993	900.573
	446.9732793	489.9376	472.2338	532.0755	481.8882	460.3147	467.927	451.4707
	444.6284316	487.3673	469.7564	529.2842	479.3602	457.8999	465.4722	449.1023
	14399.92251	15784.08	15213.73	17141.62	15524.76	14829.74	15074.98	14544.82
	7589.014477	8318.491	8017.904	9033.937	8181.824	7815.534	7944.781	7665.375
	6810.908035	7465.591	7195.823	8107.682	7342.936	7014.202	7130.198	6879.44
	630.9403434	691.5881	666.5977	751.0692	680.2257	649.7729	660.5183	637.2889
	389.6652759	427.121	411.687	463.8562	420.1037	401.2961	407.9325	393.5861

COND'

1993	1994	1995	1996	1997	1998	1999	2000
37757.72	39974.66	51216	54644	55008	38086	40056	40616
17943.61	18997.17	22367	24831	25530	20430	19588	19118
19814.11	20977.49	28849	29813	29478	17656	20468	21498
18790.4	19893.68	25346	30657	30348	19089	18313	17056
7040.976	7454.386	7914	11626	11746	8522	6833	5973
11749.43	12439.29	17432	19031	18602	10567	11480	11083
2884.643	3054.014	6426	3953	3685	3363	2329	1915
2356.439	2494.796	5064	3114	2804	2851	1987	1654
528.2042	559.2176	1362	839	881	512	342	261
900.573	953.45	1352	1495	1298	1207	752	621
451.4707	477.9788	686	665	678	678	371	297
449.1023	475.4713	666	830	620	529	381	324
14544.82	15398.81	17383	17295	18368	13450	18314	20759
7665.375	8115.447	8338	8686	9513	7764	10147	11023
6879.44	7283.365	9045	8609	8855	5686	8167	9736
637.2889	674.7072	709	1244	1309	977	348	265
393.5861	416.6954	365	740	789	615	250	171
243.7028	258.0118	344	504	520	362	98	94

Table 6: Regional Distribution of Federal Drug Offender Institutional Population and Admissions (1999-2000)

	Population 1999	Admissions 2000	Population 2000
Region			
Atlantic	198	245	206
Quebec	901	678	906
Ontario	643	532	569
Prairie	575	682	612
Pacific	257	187	255
total	2574	2324	2548

Total amount of admissions to provincial/territorial establishments, according to the detainee's status		
Provinces	Years	Totals
Newfoundland	1994-1995	166
	1995-1996	191
	1996-1997	110
	1998-1997	47
	1999-1998	48
	1999-2000	0
Prince Edward Island	1994-1995	0
	1995-1996	0
	1996-1997	95
	1998-1997	78
	1999-1998	80
	1999-2000	71
Nova Scotia	1994-1995	247
	1995-1996	210
	1996-1997	148
	1998-1997	153
	1999-1998	157
	1999-2000	201
New Brunswick ²	1994-1995	110
	1995-1996	135
	1996-1997	146
	1998-1997	68
	1999-1998	45
	1999-2000	65
Quebec	1994-1995	2068
	1995-1996	1965
	1996-1997	1725
	1998-1997	1571
	1999-1998	1304
	1999-2000	901

Ontario	1994-1995	3494
	1995-1996	2969
	1996-1997	3288
	1998-1997	3057
	1999-1998	2625
	1999-2000	2152
Manitoba	1994-1995	213
	1995-1996	170
	1996-1997	145
	1998-1997	101
	1999-1998	70
	1999-2000	0
Saskatchewan	1994-1995	0
	1995-1996	0
	1996-1997	0
	1998-1997	0
	1999-1998	77
	1999-2000	34
Alberta	1994-1995	1934
	1995-1996	1793
	1996-1997	1771
	1998-1997	1155
	1999-1998	1741
	1999-2000	1649
British Columbia	1994-1995	871
	1995-1996	994
	1996-1997	807
	1998-1997	741
	1999-1998	757
	1999-2000	877

Yukon	1994-1995	50
	1995-1996	72
	1996-1997	49
	1998-1997	42
	1999-1998	58
	1999-2000	74
Northwest territories	1994-1995	155
	1995-1996	0
	1996-1997	0
	1998-1997	0
	1999-1998	0
	1999-2000	0
TOTAL	1994-1995	9308
	1995-1996	8499
	1996-1997	8284
	1998-1997	7014
	1999-1998	6963
	1999-2000	6024