

Spring 2005  
Volume 1, Issue 1

## Inside this Issue

New Staff

MMP Briefs

MMP Audit Program

Don't Forget

**NEW**

E-Filing of manure management plans is now possible with MMPFiler. Check out our website at:  
[www.gov.mb.ca/conservation/regoperations/livestock](http://www.gov.mb.ca/conservation/regoperations/livestock)

Environmental Livestock Program  
Headquarters Operations  
Manitoba Conservation  
Box 46 – 200 Saulteaux Cr.  
Winnipeg, MB R3J 3W3  
Ph.: 204-945-8553  
Fax: 204-948-2420

# LMMMR News

News from Conservation's Environmental Livestock Program

## LMMMR News

**LMMMR News** is intended to be a regular newsletter prepared by Manitoba Conservation for the province's livestock producers. The newsletter is intended to answer frequently asked questions producers may have about the *Livestock Manure and Mortalities Management Regulation* as well as to update the industry on changes to the regulation or to implementation policies and protocols.

## New Staff

**Bryce Wood** has recently joined the Environmental Livestock Program team as the Manure Management Plan Coordinator. He is responsible for the day to day administration of the MMP program. Prior to joining Manitoba Conservation, Bryce was Farm Manager of the Manitoba Zero Tillage Research Association farm near Brandon, MB, where he was involved in both cropping system and livestock management projects. His background includes a degree in Agriculture from the University of Manitoba. Bryce looks forward to his role with the Environmental Livestock Program team and to helping operators comply with the regulation. Bryce can be contacted at 204-945-3078.

## MMP Briefs

The total number of **Manure Management Plans (MMPs)** filed with Manitoba Conservation has

been increasing steadily. It is expected that this trend will continue, as the *Livestock Manure and Mortalities Management Regulation* (LMMMR) threshold changed in March 2004 to include operations 300 Animal Units or greater (previously 400). Figure 1 shows the number of MMPs filed from the 2001 crop year to the 2005 crop year.

## MMP Audit Program

Manitoba Conservation conducts **annual field audits** for compliance with the LMMMR. Any operation that stores, handles, or applies manure can be audited. Approximately 10-15% of manure management plans (MMP) filed with Manitoba Conservation are audited, along with several non-filing operations. All files are subject to a document review including: MMP filing history, MMP accuracy, missing or incorrect information, and soil test results.

**Audit Process** - Livestock operations are randomly selected for the audit. The audit begins with

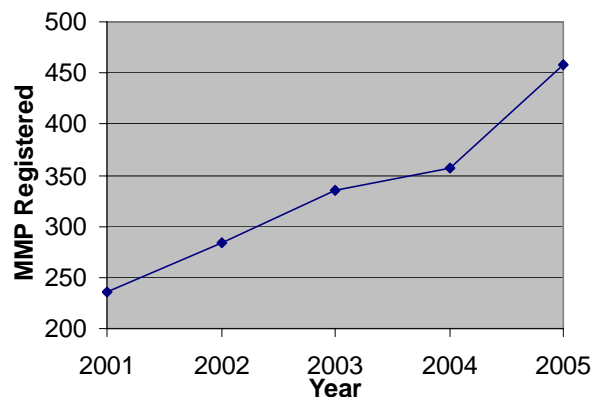
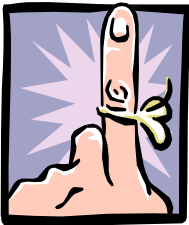


Figure 1. Number of manure management plans (MMP) registered with Manitoba Conservation since 2001.



## Don't Forget!!

1. Spreading before April 10 is considered winter spreading. Large setbacks from surface water, wells, etc. are required. Only existing operations less than 300 AU and some that are between 300 and 400 AU are allowed to winter spread.
2. Be sure to submit your soil tests to Manitoba Conservation before spreading manure.
3. Direct discharge of manure from spread fields is prohibited: stay away from watercourses!
4. Source water sample results must be submitted to Manitoba Conservation annually prior to December 31.
5. Applications for registration of non-permitted storages should already be in to your regional office.

confirmation of the spread fields' soil class and subclass, both from land information data and observations in the field. Crop type, yield potential, field condition, and field size is

verified. Additional information is gathered on site in discussion with the operator or the field owner.

Selected fields are soil sampled for nitrate level. Fields are sampled using standard soil sampling protocols, taking a minimum of 15-20 samples at a 60 cm (2 ft) depth. A manually operated backsaver soil core sampler is generally used, except in hard or gravelly soils, where a special auger type soil sampler is used to ensure proper sampling.

A legal sampling protocol is strictly followed when handling and submitting soil samples for analysis. Soil samples are sealed and kept on ice or placed in cold storage until delivered to the soil testing laboratory. The laboratory analyses the samples using a standardized procedure.

**The 2003 MMP audit** was carried out between April and November of 2003. The highlights of that audit are as follows:

- 58 operations and 118 fields were audited, which represents about 14% of registered operations (Figure 2).
- Enforcement action (including Warnings) proceeded on 24 of

these operations.

- Common violations: no registered MMP, manure applied to unregistered fields, unacceptable soil tests, and over application of manure.
- 34 out of the 58 operations had at least one field over 140 lbs/ac nitrate nitrogen.
- A recurring issue was excessive crop nitrogen recommendations on soil test reports due in part to shallow sample depths (6 or 12 inch instead of 24 inch) or unrealistically high yield goals.

**The 2004 audit** was suspended due to challenges including weather, sampling logistics, and other limitations. While 42 operations were originally selected for audit and notified, only nine operations were actually audited.

Plans for **the 2005 audit** are to include approximately 60 operations for field testing. Selected operations will be notified in the coming weeks and field reviews will commence as soon as field conditions permit.

## Important Dates

**July 10** – Manure management plan filing deadline for fall spreading.

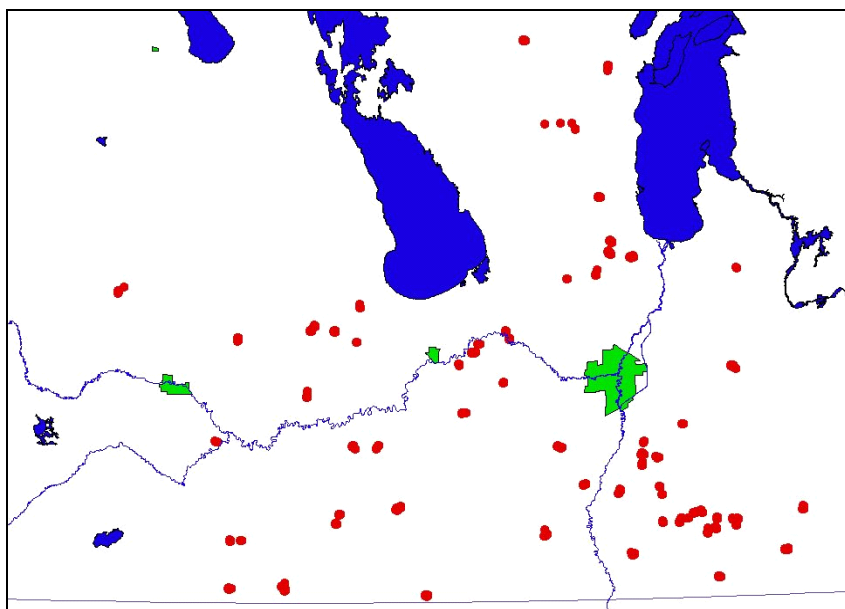


Figure 2. Distribution of the audited spread fields in Manitoba during the 2003 audit.

## Who are you going to call?

Manure management plan questions should be directed to Headquarters. Matters regarding all other aspects of the *Livestock Manure and Mortalities Regulation* should be directed to the Regional contacts. For reporting a spill, emergency spreading, or any emergencies, call your Regional contact. After hours, use the emergency response number.

<b>Emergency Response</b> 944-4888	
<b>MMP</b>	<b>Headquarters Operations</b> Ph: 945-3078 Winnipeg Or 945-3789 Fax: 948-2420
<b>Regional Contacts Manitoba Conservation</b>	<b>Interlake</b> Ph: 642-6095 Gimli <b>Eastern</b> Ph: 345-1447 Lac Du Bonnet <b>Central</b> Ph: 346-6068 Steinbach Ph: 945-5303 Winnipeg <b>Western</b> Ph: 726-6167 Brandon