

The Observatory

www.osl.gc.ca

What's New

Georeferenced Images

From the home page and also under the main theme **OBSERVE**, the OSL portal now offers access to various collections of georeferenced images, that is, photographs and images that are associated with geographical coordinates.

This Web application, which was developed by the OSL team*, allows users to search through one or more collections by selecting a locality or an area of interest and, then, if necessary, by choosing a time period and keywords. Query results show selected images along with corresponding metadata (for example, collection ID, location, date, latitude and longitude). The system was designed to handle several image collections that may be held in different locations.

For the moment, the *Research Surveys* and the *St. Lawrence Observatory* collections available on the OSL portal feature at-sea scientific activities and various coastal communities of the St. Lawrence. In the near future, two Canadian Hydrographic Service (CHS) collections will also be accessible on-line and will include a series of coastal and geodetic pictures taken during field work throughout the St. Lawrence area.

Observe images of the St. Lawrence at: www.osl.gc.ca/cin/jsp/search.jsp?lg=en

* Including contributions by Alexandre Bressani-Normand, computer science student at UQAR, and Rémi Charest, intern, CEGEP de Matane Internship Program.

In brief

What's New

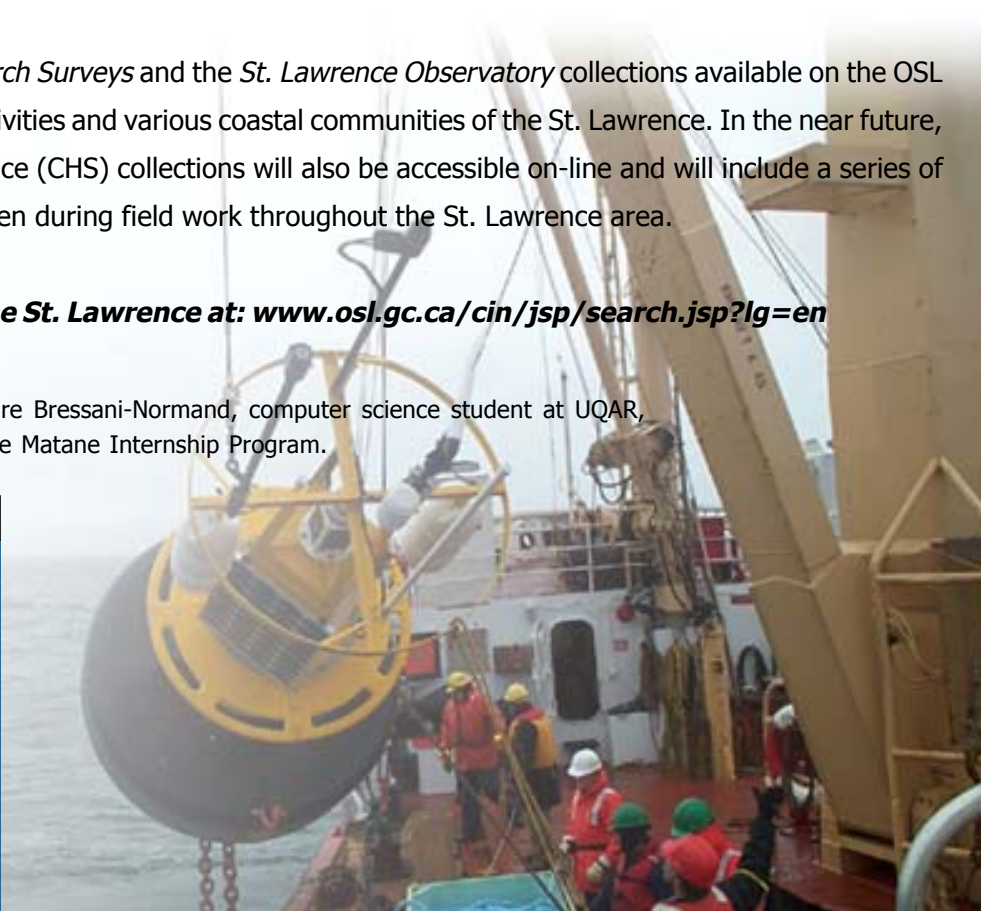
- Georeferenced Images
- *Learn more about...*
- Ocean Forecasts
- Ecosystem Modelling

Coming Soon

- Oceanographic Data Management System (ODMS)
- Experimentation and innovation

OSL Web Traffic

From the Observatory Window



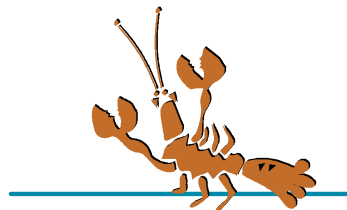
Learn more about...

- About OSL
- On the Lookout
- Learn more
- Resources
- Publications
- Questions

Français	Contact us	Help	Search	Canada Site
Home	Observe	Learn	Understand	Navigate

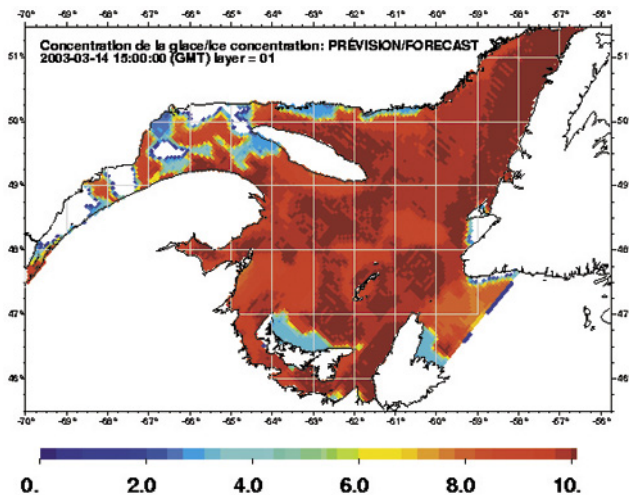
A new section called *Learn more about...* is now accessible from the left main menu bar on the OSL portal and also from the LEARN button on the top menu. Various topics, such as marine species, technologies, and scientific research, will be presented.

One of the themes currently under development and scheduled to be featured this year is *The American Lobster*. Stay tuned to learn more!



Ocean Forecasts

Although the sea ice in the St. Lawrence has now melted, it is still possible to view its concentration via an animation produced from the 2003 winter ocean forecast charts.



Sea Ice > Animation:

www.osl.gc.ca/previsions-oceaniques/en/conc_glaces.html

Ecosystem Modelling

New modelling data are now available on the OSL, allowing users to better understand the importance of various species and the predator-prey relationships within the Eastern Scotian Shelf ecosystem.

Did you know that four out of the five most downloaded documents of the entire OSL portal are **ecosystem modelling** publications? The most popular one was downloaded 2,819 times in 2002 and is still number one in 2003.

Ecosystems > Eastern Scotian Shelf:

www.osl.gc.ca/cdeena/en/accueil.shtml

Coming Soon



Oceanographic Data Management System (ODMS)

Over the past few months, the ODMS user interface underwent major changes and a revamped version will be accessible on-line very soon. Aside from offering a totally new Web site to its users, the ODMS will also feature additional information, including details of the database, procedures for opening an account and for starting the application, and reference documents. A user's guide will offer comprehensive and well-structured on-line help that will provide additional information about data format, how to make a query, retrieve data, and so on.

Did you know that the Oceanographic Data Management System currently contains more than **16,700** data files, which contain close to **24,000,000** discrete measurements?

Experimentation and Innovation

Another new section is being developed around the theme of experimentation and innovation in the marine sciences. Various aspects of laboratory and at-sea work and research activities will be presented as well as innovative techniques used in this field.

The ODMS is accessible at: www.osl.gc.ca/en/accueil.html

OSL Web Traffic

Statistics

2003 is unfolding at a very good pace according to the OSL portal Web traffic data.

*Current statistics reveal a **monthly average** of*

*273,000 hits;
7,600 work sessions;
3,300 organizations and groups of unique visitors.
The average session duration is **29** minutes.*

*Visitor origins are still quite diverse and include more than **80** countries from all continents.*

osl@osl.gc.ca

Information requests and questions from portal users are always appreciated and it is a pleasure for us to provide answers and help find the requested data and information.

Science and... sailing?

During the summer, some of the products available on the OSL, such as real-time environmental data, tides, and surface current forecasts for the Estuary and Gulf, are of particular interest to sailors on the St. Lawrence. Some have indicated that they regularly use this type of information for day trips or when participating in regattas. This information can also provide an overview of local conditions to those planning a more extensive trip, like the New York resident getting ready for a kayak expedition who recently asked us about surface temperatures and currents in the Saguenay area.

Many sailing and yachting Web sites link to the OSL portal as a source of information.

Please do not hesitate to send us your comments and suggestions.

From the Observatory Window



Few people can whale watch from their office window.

However, we were fortunate enough to

do so in May, and again in September, when a group of minke whales (*Balaenoptera acutorostrata*) showed up to feed near-shore, right behind the Maurice Lamontagne Institute.

Scuttling of HMCS Nipigon
Ste-Luce, 26 July 2003
48° 36' 28.9" N; 68° 25' 42.3" W



The Observatory is an electronic newsletter published by the St. Lawrence Observatory. If you wish to be notified of the publication of this newsletter, please let us know at osl@osl.gc.ca. The Observatory is available in both official languages and may be accessed on-line from the OSL portal, under *Publications*.

Coordination and writing:

Joanne Hamel
(hameljo@dfo-mpo.gc.ca)

Graphic Design and Layout:

Johanne Noël
(noelj@dfo-mpo.gc.ca)

Editing (French version):

Karina Laberge
(labergek@dfo-mpo.gc.ca)

Editing (English version):

Laure Devine
(devinel@dfo-mpo.gc.ca)

The St. Lawrence Observatory is an Internet portal of Fisheries and Oceans Canada—Quebec Region. It was supported during its start-up phase by Canada Economic Development and the SLV2000 Action Plan.

St. Lawrence Observatory

Maurice Lamontagne Institute
850, route de la Mer, P.O. Box 1000
Mont-Joli, Quebec Canada G5H 3Z4

Telephone: (418) 775-0759

Fax: (418) 775-0546

Email: osl@osl.gc.ca

Internet: www.osl.gc.ca

Aussi disponible en français