



NASS

FACT FINDERS FOR AGRICULTURE
UNITED STATES DEPARTMENT OF AGRICULTURE

Washington, D.C.

Quarterly Hogs and Pigs

Released September 29, 2006, by the National Agricultural Statistics Service (NASS), Agricultural Statistics Board, U.S. Department of Agriculture. For information on *Quarterly Hogs and Pigs* call Bruce Boess at 202-720-3106, office hours 7:30 a.m. to 4:00 p.m. ET.

U.S. Hog Inventory Up 1 Percent

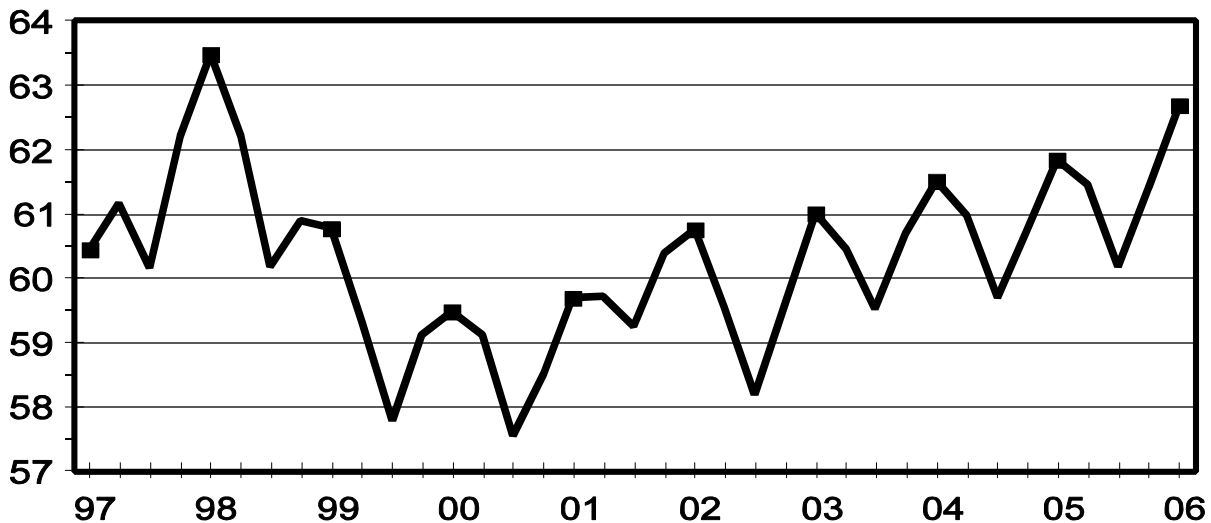
U.S. inventory of all hogs and pigs on September 1, 2006 was 62.7 million head. This was up 1 percent from September 1, 2005 and up 2 percent from June 1, 2006.

Breeding inventory, at 6.08 million head, was up 2 percent from last year and up slightly from the previous quarter. **Market hog inventory**, at 56.6 million head, was up 1 percent from last year and up 2 percent from last quarter.

The June-August 2006 pig crop, at 26.7 million head, was up 1 percent from 2005 and up 2 percent from 2004. Sows farrowing during this period totaled 2.92 million head, up slightly from 2005 and up 1 percent from 2004. The sows farrowed during this quarter represented 48 percent of the breeding herd. The average pigs saved per litter was 9.14 for the June-August 2006 period, compared to 9.06 last year. Pigs saved per litter by size of operation ranged from 7.70 for operations with 1-99 hogs and pigs to 9.20 for operations with more than 5,000 hogs and pigs.

U.S. Quarterly Hogs and Pigs Inventory September 1

Million Head



U.S. hog producers intend to have 2.92 million sows farrow during the September-November 2006 quarter, up 1 percent from the actual farrowings in both 2005 and 2004. Intended farrowings for December 2006-February 2007, at 2.90 million sows, are up 2 percent from both 2006 and 2005.

The total number of hogs under contract, owned by operations with over 5,000 head, but raised by contractees, accounted for 39 percent of the total U.S. hog inventory, unchanged from last year.

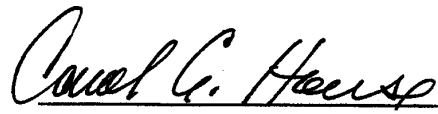
Revisions

All inventory and pig crop estimates for September 2005 through June 2006 were reviewed using final pig crop, official slaughter, death loss, and updated import and export data. Based on the findings of this review, a small adjustment of less than one-half of one percent was made to the March 2006 inventory along with an adjustment of slightly larger than one-half of one percent to the June 2006 total inventory.

This report was approved on September 29, 2006.



Secretary of
Agriculture
Mike Johanns



Agricultural Statistics Board
Chairperson
Carol C. House

Contents

	Page
Quarterly U.S. Inventory by Class and Weight Group, 2004-2006	1
Quarterly U.S. Sows Farrowed, Pig Crop, and Pigs per Litter, 2004-2007	2
Hogs and Pigs: Inventory by State and U.S., 2004-2006	
March 1	5
June 1	7
September 1	9
December 1	11
Farrowings: Number of Sows, Pigs per Litter, Pig Crop by State and U.S., 2004-2007	
December-February	13
March-May	14
June-August	15
September-November	16
Monthly U.S. Farrowings, December-November 2005-2006	17
Reliability Statement	18

**Hogs and Pigs: Inventory Number by Class, Weight Group,
and Quarter, United States, 2004-2006¹**

Item	2004	2005	2006	2006 as % of	
				2004	2005
	<i>1,000 Head</i>	<i>1,000 Head</i>	<i>1,000 Head</i>	<i>Percent</i>	<i>Percent</i>
March 1 Inventory					
All Hogs and Pigs	59,520	59,699	60,176	101	101
Kept for Breeding	5,961	5,941	6,025	101	101
Market	53,558	53,757	54,151	101	101
Market Hogs and Pigs by Weight Groups					
Under 60 Pounds	19,823	19,667	19,988	101	102
60-119 Pounds	12,954	13,087	13,006	100	99
120-179 Pounds	11,205	11,360	11,334	101	100
180 Pounds and Over	9,578	9,644	9,824	103	102
June 1 Inventory					
All Hogs and Pigs	60,698	60,732	61,417	101	101
Kept for Breeding	5,937	5,977	6,060	102	101
Market	54,760	54,754	55,357	101	101
Market Hogs and Pigs by Weight Groups					
Under 60 Pounds	20,292	20,423	20,608	102	101
60-119 Pounds	13,500	13,376	13,642	101	102
120-179 Pounds	11,256	11,143	11,465	102	103
180 Pounds and Over	9,714	9,813	9,643	99	98
September 1 Inventory					
All Hogs and Pigs	61,519	61,846	62,704	102	101
Kept for Breeding	5,962	5,972	6,079	102	102
Market	55,556	55,873	56,625	102	101
Market Hogs and Pigs by Weight Groups					
Under 60 Pounds	20,729	20,764	20,998	101	101
60-119 Pounds	13,613	13,876	13,991	103	101
120-179 Pounds	11,235	11,404	11,555	103	101
180 Pounds and Over	9,981	9,830	10,082	101	103
December 1 Inventory					
All Hogs and Pigs	60,975	61,449			
Kept for Breeding	5,969	6,011			
Market	55,005	55,438			
Market Hogs and Pigs by Weight Groups					
Under 60 Pounds	19,980	20,055			
60-119 Pounds	13,439	13,524			
120-179 Pounds	11,186	11,293			
180 Pounds and Over	10,401	10,567			

¹ May not add due to rounding.

**Farrowings: Number of Sows, Pig Crop, and Pigs per Litter,
United States, 2004-2007 ¹**

Item	2004	2005	2006	2007	2006 as % of		2007 as % of 2006
					2004	2005	
	<i>1,000 Head</i>	<i>1,000 Head</i>	<i>1,000 Head</i>	<i>1,000 Head</i>	<i>Percent</i>	<i>Percent</i>	<i>Percent</i>
Sows Farrowing							
Dec-Feb ^{2,3}	2,836	2,835	2,840	2,902	100	100	102
Mar-May	2,870	2,882	2,897		101	101	
Dec-May ²	5,706	5,716	5,737		101	100	
Jun-Aug	2,905	2,918	2,924		101	100	
Sep-Nov ⁴	2,888	2,900	2,925		101	101	
Jun-Nov ⁵	5,793	5,818	5,849		101	101	
Pig Crop							
Dec-Feb ²	25,105	25,343	25,658		102	101	
Mar-May	25,633	25,986	26,301		103	101	
Dec-May ²	50,737	51,330	51,958		102	101	
Jun-Aug	26,162	26,449	26,727		102	101	
Sep-Nov	25,881	26,187					
Jun-Nov	52,043	52,635					
	<i>Number</i>	<i>Number</i>	<i>Number</i>	<i>Number</i>	<i>Percent</i>	<i>Percent</i>	<i>Percent</i>
Pigs per Litter							
Dec-Feb ²	8.85	8.94	9.03		102	101	
Mar-May	8.93	9.02	9.08		102	101	
Dec-May ²	8.89	8.98	9.06		102	101	
Jun-Aug	9.01	9.06	9.14		101	101	
Sep-Nov	8.96	9.03					
Jun-Nov	8.98	9.05					

¹ May not add due to rounding.

² December preceding year.

³ Intentions for 2007.

⁴ Intentions for 2006.

⁵ Actual farrowings for June-August plus intentions for September-November.

Pigs per Litter: By Size of Operation, United States, 2005-2006 ¹

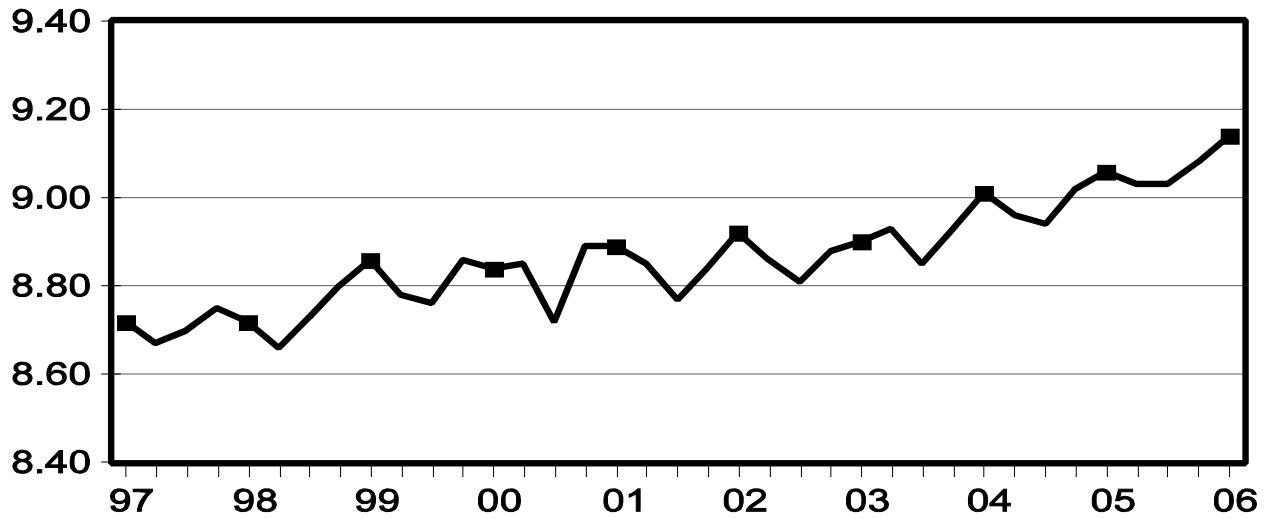
Pig Crop	Pigs per Litter on Operations Having					
	1-99 Head	100-499 Head	500-999 Head	1,000-1,999 Head	2,000-4,999 Head	5,000+ Head
	<i>Number</i>	<i>Number</i>	<i>Number</i>	<i>Number</i>	<i>Number</i>	<i>Number</i>
2005						
Dec-Feb ²	7.50	7.80	8.30	8.80	8.90	9.00
Mar-May	7.50	7.90	8.30	8.80	9.00	9.10
Jun-Aug	7.60	7.90	8.70	8.80	9.00	9.10
Sep-Nov	7.50	8.00	8.50	8.70	9.00	9.10
2006						
Dec-Feb ²	7.50	8.00	8.30	8.80	9.00	9.10
Mar-May	7.60	8.00	8.40	8.80	9.00	9.20
Jun-Aug	7.70	8.00	8.40	8.80	9.10	9.20
Sep-Nov						

¹ Pigs per litter rounded to the nearest tenth.

² December preceding year.

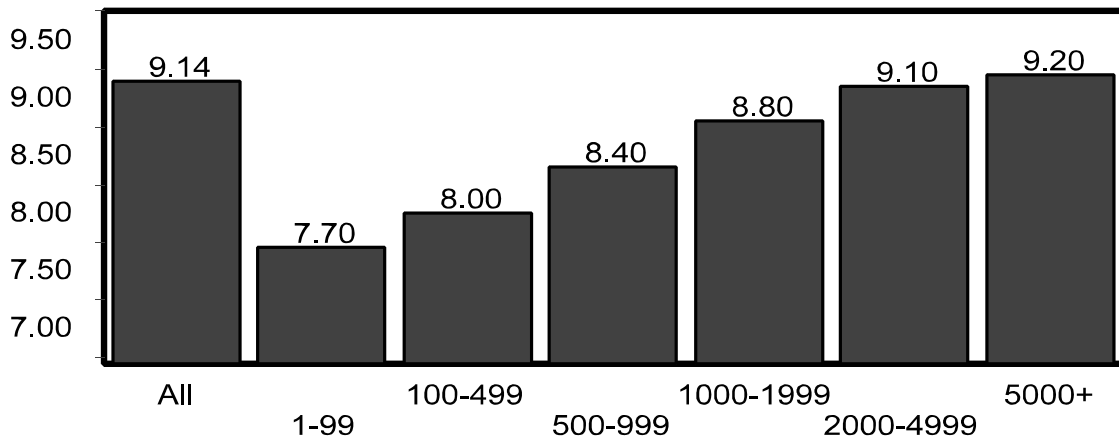
U.S. Quarterly Litter Rate June-August

Number Head



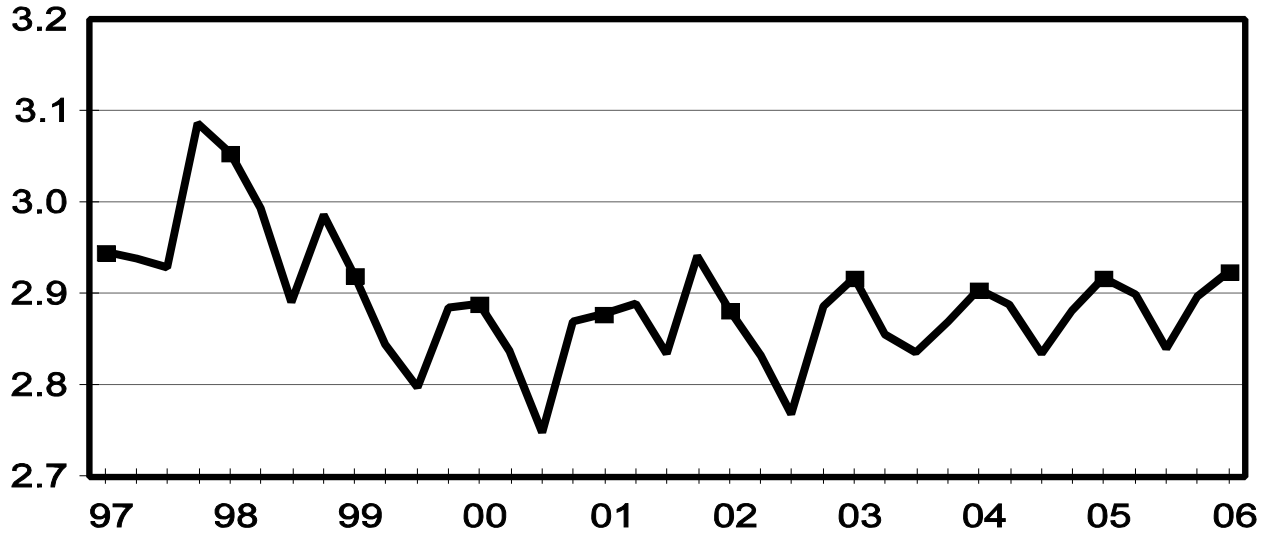
U.S. Pigs per Litter By Size of Operation, June-August 2006

Number Head



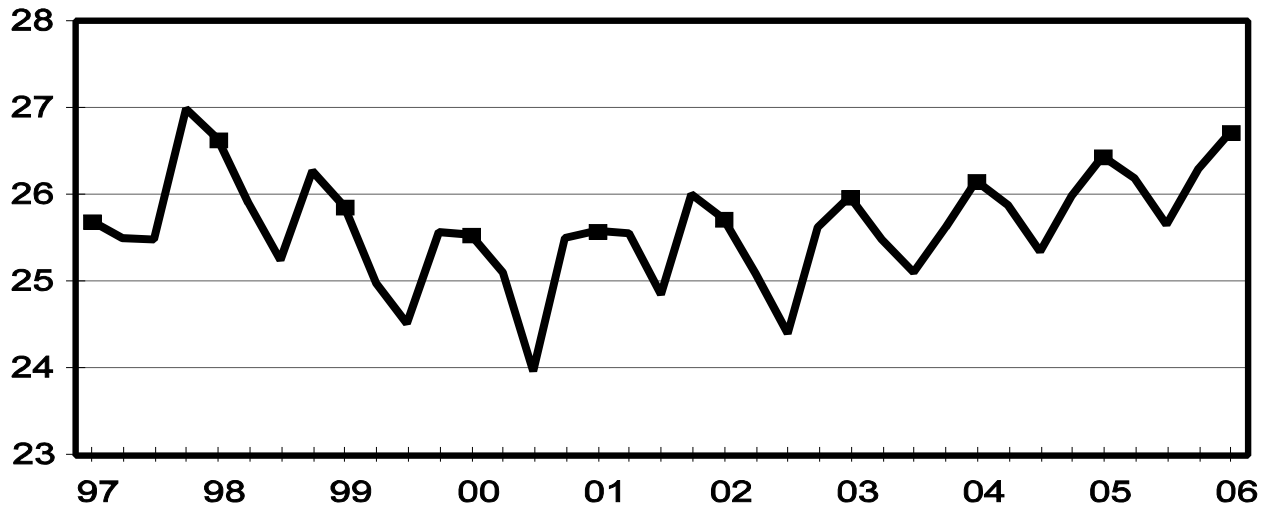
U.S. Quarterly Sows Farrowed June-August

Million Head



U.S. Quarterly Pig Crop June-August

Million Head



**Hogs and Pigs: Breeding, Market, and Total Inventory
by State and United States, March 1, 2005-2006 ¹**

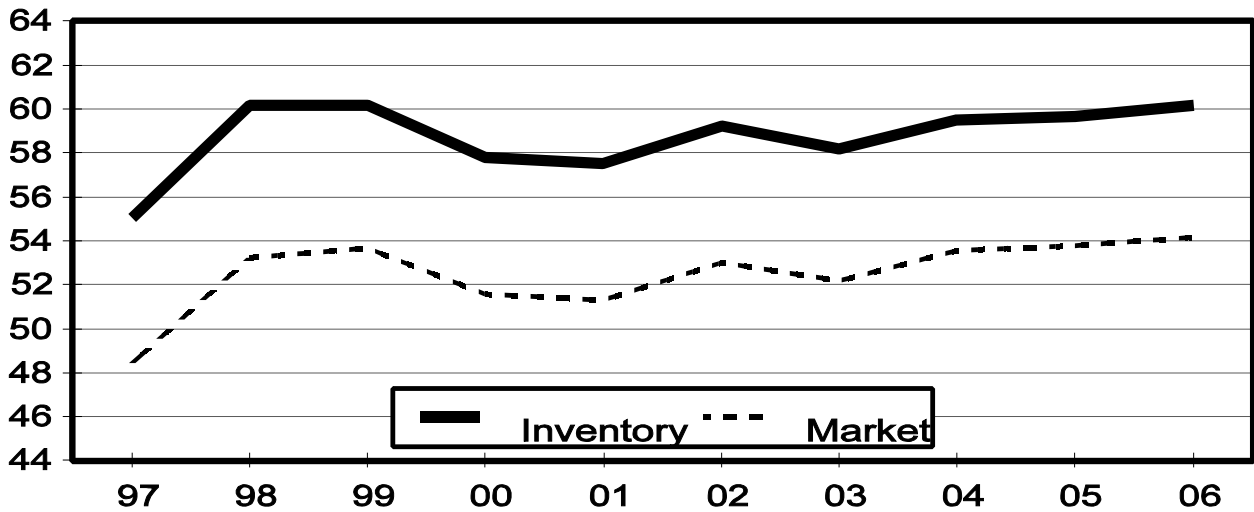
State	Breeding			Market			Total		
	2005	2006		2005	2006		2005	2006	
		Number	as % of 2005		Number	as % of 2005		Number	as % of 2005
	<i>1,000 Head</i>	<i>1,000 Head</i>	<i>Percent</i>	<i>1,000 Head</i>	<i>1,000 Head</i>	<i>Percent</i>	<i>1,000 Head</i>	<i>1,000 Head</i>	<i>Percent</i>
AR	85	85	100	245	185	76	330	270	82
CO	140	150	107	670	680	101	810	830	102
IL	430	420	98	3,570	3,680	103	4,000	4,100	103
IN	290	310	107	2,710	2,790	103	3,000	3,100	103
IA	1,080	1,100	102	15,020	15,200	101	16,100	16,300	101
KS	155	165	106	1,525	1,565	103	1,680	1,730	103
MI	100	100	100	820	860	105	920	960	104
MN	590	580	98	5,710	5,820	102	6,300	6,400	102
MO	330	345	105	2,520	2,355	93	2,850	2,700	95
NE	355	355	100	2,395	2,545	106	2,750	2,900	105
NC	1,010	1,020	101	8,690	8,480	98	9,700	9,500	98
OH	160	160	100	1,340	1,380	103	1,500	1,540	103
OK	360	360	100	2,020	1,970	98	2,380	2,330	98
PA	105	100	95	995	1,010	102	1,100	1,110	101
SD	145	155	107	1,215	1,285	106	1,360	1,440	106
TX	95	100	105	815	830	102	910	930	102
WI	50	50	100	380	370	97	430	420	98
Oth Sts ²	461	470	102	3,117	3,146	101	3,579	3,616	101
US	5,941	6,025	101	53,757	54,151	101	59,699	60,176	101

¹ May not add due to rounding.

² Individual State estimates not available for the 33 Other States.

**U.S. Hog Inventory & Market Hogs
March 1**

Million Head



**Market Hogs and Pigs: Inventory Number by Weight Group,
State, and United States, March 1, 2005-2006 ¹**

State	Under 60 Lbs.		60-119 Lbs.		120-179 Lbs.		180 Lbs. and Over	
	2005	2006	2005	2006	2005	2006	2005	2006
	<i>1,000 Head</i>	<i>1,000 Head</i>	<i>1,000 Head</i>	<i>1,000 Head</i>	<i>1,000 Head</i>	<i>1,000 Head</i>	<i>1,000 Head</i>	<i>1,000 Head</i>
AR	145	140	35	15	30	15	35	15
CO	365	360	115	90	85	80	105	150
IL	1,360	1,310	840	870	760	820	610	680
IN	1,000	1,030	650	700	570	560	490	500
IA	4,330	4,680	4,230	4,140	3,490	3,440	2,970	2,940
KS	540	530	255	285	280	345	450	405
MI	325	315	190	200	160	175	145	170
MN	2,230	2,280	1,390	1,330	1,250	1,310	840	900
MO	1,190	1,085	520	490	480	460	330	320
NE	970	1,000	600	660	470	490	355	395
NC	3,410	3,400	2,030	1,940	1,830	1,690	1,420	1,450
OH	550	570	310	315	300	305	180	190
OK	960	910	330	350	260	220	470	490
PA	290	370	290	270	230	210	185	160
SD	430	455	295	300	270	275	220	255
TX	295	265	190	190	160	195	170	180
WI	145	145	90	90	80	70	65	65
Oth Sts ²	1,132	1,143	727	771	655	674	604	559
US	19,667	19,988	13,087	13,006	11,360	11,334	9,644	9,824

¹ Weight groups may not add to Market due to rounding.

² Individual State estimates not available for the 33 Other States.

**Hogs and Pigs: Breeding, Market, and Total Inventory
by State and United States, June 1, 2005-2006¹**

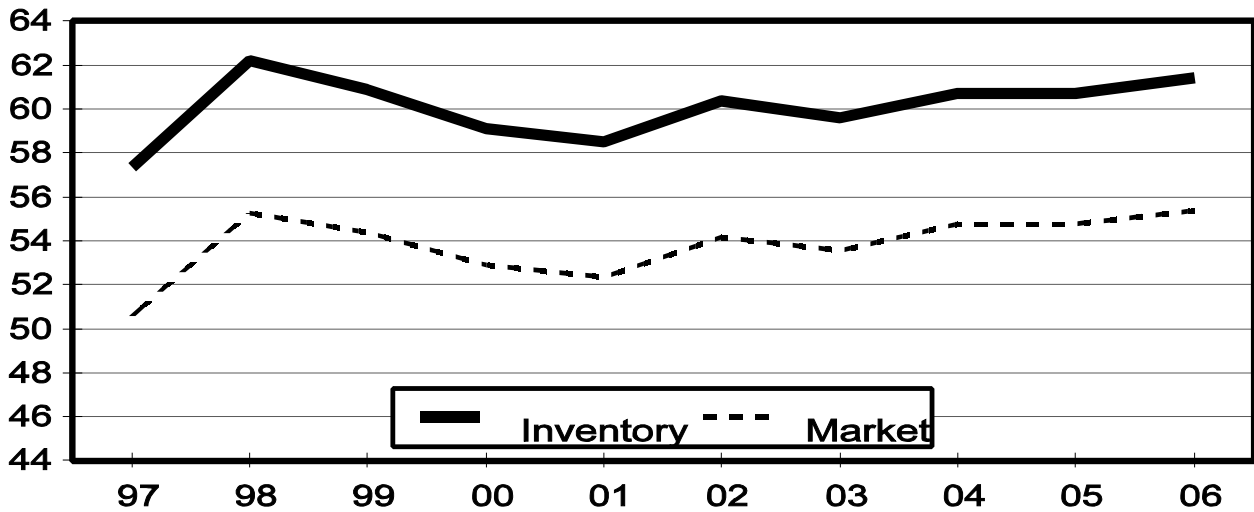
State	Breeding			Market			Total		
	2005	2006		2005	2006		2005	2006	
		Number	as % of 2005		Number	as % of 2005		Number	as % of 2005
	<i>1,000 Head</i>	<i>1,000 Head</i>	<i>Percent</i>	<i>1,000 Head</i>	<i>1,000 Head</i>	<i>Percent</i>	<i>1,000 Head</i>	<i>1,000 Head</i>	<i>Percent</i>
AR	85	85	100	205	195	95	290	280	97
CO	140	150	107	640	690	108	780	840	108
IL	430	430	100	3,670	3,770	103	4,100	4,200	102
IN	300	320	107	2,800	2,880	103	3,100	3,200	103
IA	1,070	1,080	101	15,130	15,420	102	16,200	16,500	102
KS	155	160	103	1,535	1,670	109	1,690	1,830	108
MI	100	100	100	810	870	107	910	970	107
MN	600	590	98	6,000	6,110	102	6,600	6,700	102
MO	340	350	103	2,510	2,350	94	2,850	2,700	95
NE	355	365	103	2,445	2,585	106	2,800	2,950	105
NC	1,020	1,020	100	8,880	8,580	97	9,900	9,600	97
OH	160	165	103	1,420	1,445	102	1,580	1,610	102
OK	360	360	100	2,020	2,000	99	2,380	2,360	99
PA	100	100	100	970	990	102	1,070	1,090	102
SD	145	160	110	1,255	1,300	104	1,400	1,460	104
TX	100	105	105	830	855	103	930	960	103
WI	50	55	110	380	375	99	430	430	100
Oth Sts ²	467	465	99	3,254	3,272	101	3,722	3,737	100
US	5,977	6,060	101	54,754	55,357	101	60,732	61,417	101

¹ May not add due to rounding.

² Individual State estimates not available for the 33 Other States.

**U.S. Hog Inventory & Market Hogs
June 1**

Million Head



**Market Hogs and Pigs: Inventory Number by Weight Group,
State, and United States, June 1, 2005-2006 ¹**

State	Under 60 Lbs.		60-119 Lbs.		120-179 Lbs.		180 Lbs. and Over	
	2005	2006	2005	2006	2005	2006	2005	2006
	<i>1,000 Head</i>	<i>1,000 Head</i>	<i>1,000 Head</i>	<i>1,000 Head</i>	<i>1,000 Head</i>	<i>1,000 Head</i>	<i>1,000 Head</i>	<i>1,000 Head</i>
AR	140	140	20	20	20	15	25	20
CO	355	360	110	85	60	95	115	150
IL	1,340	1,350	900	940	770	840	660	640
IN	1,040	1,080	700	760	550	550	510	490
IA	4,600	4,760	4,130	4,240	3,500	3,530	2,900	2,890
KS	550	575	305	360	280	310	400	425
MI	310	325	200	195	155	175	145	175
MN	2,410	2,430	1,440	1,500	1,220	1,290	930	890
MO	1,230	1,135	480	490	450	420	350	305
NE	960	1,000	640	680	490	530	355	375
NC	3,560	3,540	2,140	1,960	1,720	1,690	1,460	1,390
OH	580	580	340	360	300	320	200	185
OK	960	920	330	330	230	270	500	480
PA	285	320	290	290	225	215	170	165
SD	465	465	320	310	250	275	220	250
TX	325	265	150	220	160	205	195	165
WI	150	145	90	105	70	70	70	55
Oth Sts ²	1,163	1,218	791	797	693	665	608	593
US	20,423	20,608	13,376	13,642	11,143	11,465	9,813	9,643

¹ Weight groups may not add to Market due to rounding.

² Individual State estimates not available for the 33 Other States.

**Hogs and Pigs: Breeding, Market, and Total Inventory
by State and United States, September 1, 2005-2006¹**

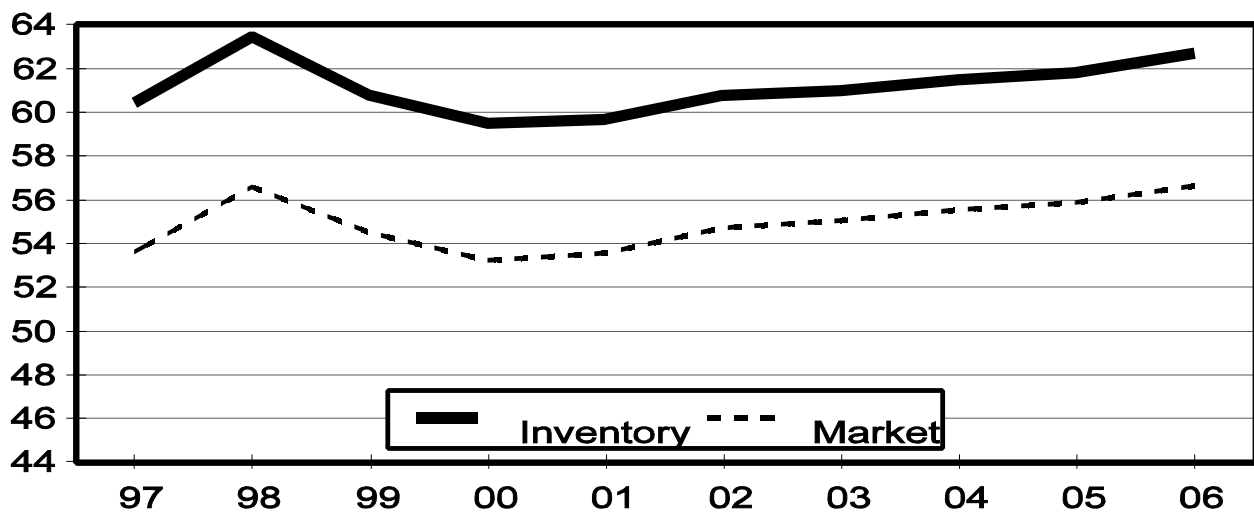
State	Breeding			Market			Total		
	2005	2006		2005	2006		2005	2006	
		Number	as % of 2005		Number	as % of 2005		Number	as % of 2005
	<i>1,000 Head</i>	<i>1,000 Head</i>	<i>Percent</i>	<i>1,000 Head</i>	<i>1,000 Head</i>	<i>Percent</i>	<i>1,000 Head</i>	<i>1,000 Head</i>	<i>Percent</i>
AR	85	85	100	200	195	98	285	280	98
CO	145	155	107	715	695	97	860	850	99
IL	420	440	105	3,630	3,910	108	4,050	4,350	107
IN	300	330	110	2,800	3,020	108	3,100	3,350	108
IA	1,080	1,080	100	15,520	15,820	102	16,600	16,900	102
KS	155	165	106	1,565	1,745	112	1,720	1,910	111
MI	100	100	100	830	870	105	930	970	104
MN	600	590	98	6,200	6,310	102	6,800	6,900	101
MO	340	355	104	2,510	2,395	95	2,850	2,750	96
NE	350	350	100	2,450	2,550	104	2,800	2,900	104
NC	1,020	1,010	99	9,080	8,690	96	10,100	9,700	96
OH	160	170	106	1,400	1,490	106	1,560	1,660	106
OK	360	360	100	2,060	2,030	99	2,420	2,390	99
PA	95	105	111	985	1,045	106	1,080	1,150	106
SD	140	155	111	1,240	1,325	107	1,380	1,480	107
TX	100	100	100	890	880	99	990	980	99
WI	50	55	110	370	375	101	420	430	102
Oth Sts ²	472	474	100	3,428	3,280	96	3,901	3,754	96
US	5,972	6,079	102	55,873	56,625	101	61,846	62,704	101

¹ May not add due to rounding.

² Individual State estimates not available for the 33 Other States.

U.S. Hog Inventory & Market Hogs September 1

Million Head



**Market Hogs and Pigs: Inventory Number by Weight Group,
State, and United States, September 1, 2005-2006 ¹**

State	Under 60 Lbs.		60-119 Lbs.		120-179 Lbs.		180 Lbs. and Over	
	2005	2006	2005	2006	2005	2006	2005	2006
	<i>1,000 Head</i>	<i>1,000 Head</i>	<i>1,000 Head</i>	<i>1,000 Head</i>	<i>1,000 Head</i>	<i>1,000 Head</i>	<i>1,000 Head</i>	<i>1,000 Head</i>
AR	145	145	20	15	15	15	20	20
CO	400	385	110	85	85	85	120	140
IL	1,380	1,370	890	980	800	850	560	710
IN	1,050	1,120	720	770	550	590	480	540
IA	4,780	4,850	4,400	4,470	3,450	3,520	2,890	2,980
KS	535	600	355	380	265	300	410	465
MI	320	305	195	215	165	180	150	170
MN	2,450	2,490	1,500	1,560	1,320	1,300	930	960
MO	1,180	1,115	520	480	470	470	340	330
NE	980	990	660	660	460	510	350	390
NC	3,650	3,560	2,130	2,010	1,780	1,710	1,520	1,410
OH	580	610	335	360	290	320	195	200
OK	930	960	300	320	270	260	560	490
PA	300	340	270	290	220	230	195	185
SD	440	485	315	315	255	275	230	250
TX	290	320	210	195	195	180	195	185
WI	145	150	90	85	70	75	65	65
Oth Sts ²	1,209	1,203	856	801	744	685	620	592
US	20,764	20,998	13,876	13,991	11,404	11,555	9,830	10,082

¹ Weight groups may not add to Market due to rounding.

² Individual State estimates not available for the 33 Other States.

**Hogs and Pigs: Breeding, Market, and Total Inventory
by State and United States, December 1, 2004-2005¹**

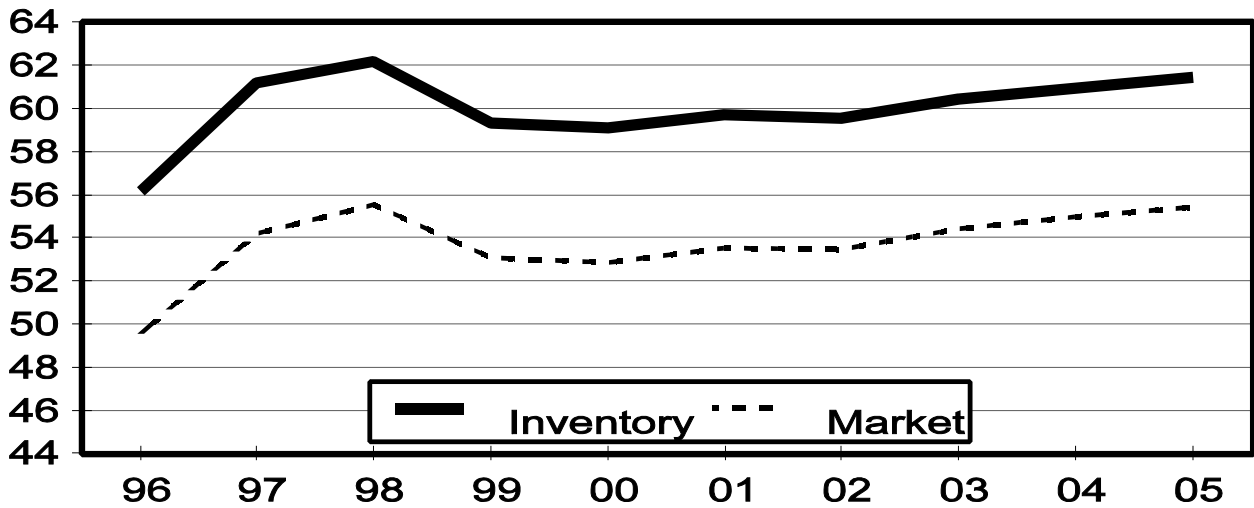
State	Breeding			Market			Total		
	2004	2005		2004	2005		2004	2005	
		Number	as % of 2004		Number	as % of 2004		Number	as % of 2004
	<i>1,000 Head</i>	<i>1,000 Head</i>	<i>Percent</i>	<i>1,000 Head</i>	<i>1,000 Head</i>	<i>Percent</i>	<i>1,000 Head</i>	<i>1,000 Head</i>	<i>Percent</i>
AR	85	85	100	245	185	76	330	270	82
CO	140	145	104	660	705	107	800	850	106
IL	420	430	102	3,680	3,570	97	4,100	4,000	98
IN	290	310	107	2,910	2,940	101	3,200	3,250	102
IA	1,070	1,070	100	15,230	15,530	102	16,300	16,600	102
KS	155	160	103	1,555	1,630	105	1,710	1,790	105
MI	110	100	91	840	860	102	950	960	101
MN	600	590	98	5,900	6,010	102	6,500	6,600	102
MO	340	345	101	2,560	2,355	92	2,900	2,700	93
NE	355	350	99	2,495	2,500	100	2,850	2,850	100
NC	1,020	1,010	99	8,880	8,790	99	9,900	9,800	99
OH	155	165	106	1,295	1,395	108	1,450	1,560	108
OK	360	360	100	2,030	2,010	99	2,390	2,370	99
PA	115	100	87	965	1,000	104	1,080	1,100	102
SD	140	165	118	1,200	1,325	110	1,340	1,490	111
TX	100	100	100	890	830	93	990	930	94
WI	50	55	110	380	375	99	430	430	100
Oth Sts ²	464	471	101	3,290	3,428	104	3,755	3,899	104
US	5,969	6,011	101	55,005	55,438	101	60,975	61,449	101

¹ May not add due to rounding.

² Individual State estimates not available for the 33 other States.

U.S. Hog Inventory & Market Hogs December 1

Million Head



**Market Hogs and Pigs: Inventory Number by Weight Group,
State, and United States, December 1, 2004-2005 ¹**

State	Under 60 Lbs.		60-119 Lbs.		120-179 Lbs.		180 Lbs. and Over	
	2004	2005	2004	2005	2004	2005	2004	2005
	<i>1,000 Head</i>	<i>1,000 Head</i>	<i>1,000 Head</i>	<i>1,000 Head</i>	<i>1,000 Head</i>	<i>1,000 Head</i>	<i>1,000 Head</i>	<i>1,000 Head</i>
AR	130	130	40	20	35	15	40	20
CO	355	390	100	95	75	85	130	135
IL	1,410	1,300	830	860	770	740	670	670
IN	1,010	1,060	750	730	600	560	550	590
IA	4,580	4,610	4,130	4,180	3,340	3,520	3,180	3,220
KS	460	570	330	315	340	315	425	430
MI	330	315	195	205	160	175	155	165
MN	2,250	2,320	1,420	1,460	1,250	1,200	980	1,030
MO	1,200	1,105	530	480	480	450	350	320
NE	970	980	650	660	470	470	405	390
NC	3,520	3,450	2,150	2,130	1,700	1,720	1,510	1,490
OH	535	550	310	330	270	295	180	220
OK	970	920	340	320	230	240	490	530
PA	280	310	275	280	215	215	195	195
SD	410	450	300	325	260	290	230	260
TX	300	270	200	195	205	180	185	185
WI	135	150	90	85	80	75	75	65
Oth Sts ²	1,135	1,175	799	854	706	748	651	652
US	19,980	20,055	13,439	13,524	11,186	11,293	10,401	10,567

¹ Weight groups may not add to Market due to rounding.

² Individual State estimates not available for the 33 other States.

**Farrowings: Number of Sows, Pigs per Litter, and Pig Crop
by State and United States, December-February 2005-2007^{1,2}**

State	Sows Farrowing				Pigs Per Litter		Pig Crop ³		
	2005	2006	2007 ⁴		2005	2006	2005	2006	
			Number	as % of 2006				Number	as % of 2005
	<i>1,000 Head</i>	<i>1,000 Head</i>	<i>1,000 Head</i>	<i>Percent</i>	<i>Number</i>	<i>Number</i>	<i>1,000 Head</i>	<i>1,000 Head</i>	<i>Percent</i>
AR	43	41	39	95	9.55	9.50	411	390	95
CO	75	81	81	100	8.55	8.80	641	713	111
IL	210	195	210	108	8.90	9.00	1,869	1,755	94
IN	130	130	150	115	8.80	8.95	1,144	1,164	102
IA	440	455	450	99	8.90	9.00	3,916	4,095	105
KS	80	84	88	105	8.70	8.85	696	743	107
MI	44	48	50	104	9.00	9.30	396	446	113
MN	275	270	275	102	9.10	9.10	2,503	2,457	98
MO	170	165	165	100	9.05	9.00	1,539	1,485	96
NE	175	175	170	97	9.00	9.15	1,575	1,601	102
NC	540	540	540	100	8.85	9.10	4,779	4,914	103
OH	77	76	83	109	9.00	9.10	693	692	100
OK	190	185	180	97	8.80	8.70	1,672	1,610	96
PA	47	47	51	109	9.50	9.90	447	465	104
SD	72	77	79	103	9.40	9.40	677	724	107
TX	43	42	48	114	9.20	8.60	396	361	91
WI	24	26	26	100	8.75	8.55	210	222	106
Oth Sts ⁵	200	203	217	107	8.91	8.97	1,779	1,821	102
US	2,835	2,840	2,902	102	8.94	9.03	25,343	25,658	101

¹ December preceding year.

² May not add due to rounding.

³ Number of pigs born December-February that were still on hand March 1, or had been sold.

⁴ Intentions.

⁵ Individual State estimates not available for the 33 Other States.

**Farrowings: Number of Sows, Pigs per Litter, and Pig Crop
by State and United States, March-May 2005-2006 ¹**

State	Sows Farrowing			Pigs per Litter		Pig Crop ²		
	2005	2006		2005	2006	2005	2006	
		Number	as % of 2005				Number	as % of 2005
	<i>1,000 Head</i>	<i>1,000 Head</i>	<i>Percent</i>	<i>Number</i>	<i>Number</i>	<i>1,000 Head</i>	<i>1,000 Head</i>	<i>Percent</i>
AR	42	41	98	9.70	9.60	407	394	97
CO	77	81	105	8.80	8.90	678	721	106
IL	210	205	98	8.95	9.05	1,880	1,855	99
IN	135	135	100	8.85	8.90	1,195	1,202	101
IA	440	455	103	9.05	8.95	3,982	4,072	102
KS	83	81	98	8.80	9.10	730	737	101
MI	45	46	102	9.00	9.20	405	423	104
MN	290	280	97	9.15	9.30	2,654	2,604	98
MO	170	170	100	9.10	9.10	1,547	1,547	100
NE	175	180	103	9.05	9.15	1,584	1,647	104
NC	550	550	100	8.90	9.10	4,895	5,005	102
OH	77	79	103	9.00	9.00	693	711	103
OK	190	185	97	8.90	8.90	1,691	1,647	97
PA	47	46	98	9.10	9.10	428	419	98
SD	75	82	109	9.30	9.35	698	767	110
TX	45	44	98	9.40	9.25	423	407	96
WI	25	27	108	8.75	8.70	219	235	107
Oth Sts ³	206	210	102	9.13	9.09	1,877	1,908	102
US	2,882	2,897	101	9.02	9.08	25,986	26,301	101

¹ May not add due to rounding.

² Number of pigs born March-May that were still on hand June 1, or had been sold.

³ Individual State estimates not available for the 33 other States.

**Farrowings: Number of Sows, Pigs per Litter, and Pig Crop
by State and United States, June-August 2005-2006 ¹**

State	Sows Farrowing			Pigs per Litter		Pig Crop ²		
	2005	2006		2005	2006	2005	2006	
		Number	as % of 2005				Number	as % of 2005
	<i>1,000 Head</i>	<i>1,000 Head</i>	<i>Percent</i>	<i>Number</i>	<i>Number</i>	<i>1,000 Head</i>	<i>1,000 Head</i>	<i>Percent</i>
AR	44	41	93	9.60	9.70	422	398	94
CO	81	83	102	8.80	9.00	713	747	105
IL	205	205	100	8.90	9.05	1,825	1,855	102
IN	140	140	100	8.90	8.95	1,246	1,253	101
IA	460	455	99	9.00	9.10	4,140	4,141	100
KS	83	85	102	8.80	8.80	730	748	102
MI	48	47	98	9.25	9.20	444	432	97
MN	280	280	100	9.30	9.30	2,604	2,604	100
MO	170	170	100	9.05	9.10	1,539	1,547	101
NE	175	175	100	9.05	9.15	1,584	1,601	101
NC	560	560	100	9.10	9.15	5,096	5,124	101
OH	78	85	109	9.10	9.20	710	782	110
OK	200	190	95	8.90	9.00	1,780	1,710	96
PA	47	46	98	9.40	8.80	442	405	92
SD	71	80	113	9.40	9.40	667	752	113
TX	45	50	111	9.10	9.65	410	483	118
WI	25	26	104	8.70	8.85	218	230	106
Oth Sts ³	206	206	100	9.12	9.30	1,879	1,915	102
US	2,918	2,924	100	9.06	9.14	26,449	26,727	101

¹ May not add due to rounding.

² Number of pigs born June-August that were still on hand September 1, or had been sold.

³ Individual State estimates not available for the 33 Other States.

**Farrowings: Number of Sows, Pigs per Litter, and Pig Crop
by State and United States, September-November 2004-2006¹**

State	Sows Farrowing				Pigs per Litter		Pig Crop ²		
	2004	2005	2006 ³		2004	2005	2004	2005	
			Number	as % of 2005				Number	as % of 2004
	<i>1,000 Head</i>	<i>1,000 Head</i>	<i>1,000 Head</i>	<i>Percent</i>	<i>Number</i>	<i>Number</i>	<i>1,000 Head</i>	<i>1,000 Head</i>	<i>Percent</i>
AR	42	42	41	98	9.50	9.70	399	407	102
CO	73	81	83	102	8.45	8.80	617	713	116
IL	210	200	215	108	8.85	8.85	1,859	1,770	95
IN	135	135	145	107	8.85	9.00	1,195	1,215	102
IA	460	455	460	101	8.90	9.00	4,094	4,095	100
KS	83	84	88	105	8.80	8.70	730	731	100
MI	46	47	49	104	9.20	9.20	423	432	102
MN	285	280	275	98	9.10	9.25	2,594	2,590	100
MO	170	175	170	97	8.95	8.95	1,522	1,566	103
NE	170	175	175	100	9.00	9.05	1,530	1,584	104
NC	550	550	540	98	9.00	9.00	4,950	4,950	100
OH	77	81	82	101	9.00	9.10	693	737	106
OK	190	190	185	97	8.90	8.90	1,691	1,691	100
PA	49	47	50	106	9.50	9.80	466	461	99
SD	71	81	81	100	9.20	9.30	653	753	115
TX	46	44	48	109	8.95	8.90	412	392	95
WI	25	27	26	96	8.80	8.65	220	234	106
Oth Sts ⁴	206	206	212	103	8.91	9.04	1,833	1,866	102
US	2,888	2,900	2,925	101	8.96	9.03	25,881	26,187	101

¹ May not add due to rounding.

² Number of pigs born September-November that were still on hand December 1, or had been sold.

³ Intentions.

⁴ Individual State estimates not available for the 33 other States.

**Monthly Farrowings: Number of Sows, Pigs per Litter, and Pig Crop,
United States, December-November 2005-2006^{1 2}**

Month	Sows Farrowing		Pigs per Litter		Pig Crop	
	2005	2006	2005	2006	2005	2006
	<i>1,000 Head</i>	<i>1,000 Head</i>	<i>Number</i>	<i>Number</i>	<i>1,000 Head</i>	<i>1,000 Head</i>
Dec ¹	938	937	8.89	8.98	8,338	8,412
Jan	951	953	8.94	9.07	8,500	8,648
Feb	946	950	8.99	9.05	8,505	8,598
Mar	967	973	8.99	9.03	8,693	8,782
Apr	962	956	9.00	9.09	8,656	8,691
May	953	968	9.06	9.12	8,637	8,828
Jun	968	974	9.07	9.13	8,779	8,888
Jul	978	970	9.04	9.13	8,845	8,859
Aug	972	980	9.08	9.16	8,825	8,980
Sep	982		9.04		8,874	
Oct	970		9.05		8,777	
Nov	948		9.00		8,536	
Total	11,535		9.01		103,965	

¹ December preceding year.

² Monthly values may not add to quarterly or annual totals due to rounding.

Reliability of September 1 Hogs and Pigs Estimates

Survey Procedures: A random sample of roughly 10,000 U.S. producers was surveyed to provide data for these estimates. Survey procedures ensured that all hog and pig producers, regardless of size, had a chance to be included in the survey. Large producers were sampled more heavily than small operations. During the first half of September data were collected from about 8,000 operations, 80 percent of the total sample. The data collected were received by electronic data reporting (EDR), mail, telephone, and face-to-face personal interviews. Regardless of when operations responded, they were asked to report inventories as of September 1.

Estimation Procedures: These hogs and pigs estimates were prepared by the Agricultural Statistics Board after reviewing recommendations and analysis submitted by each field office. National and State survey data were reviewed for reasonableness with each other and with estimates from past years using a balance sheet. The balance sheet begins with the previous inventory estimate, adds the estimates of births and imports, and subtracts the estimates of slaughter, exports, and deaths. This indicated ending inventory level is compared to the Agricultural Statistics Board estimate for reasonableness.

Revision Policy: Revisions to previous estimates are made to improve quarter to quarter relationships. Estimates for the previous four quarters are subject to revision when current estimates are made. In December, estimates for all quarters of the current and previous year are reviewed. The reviews are primarily based on hog check-off receipts and slaughter. Estimates will also be reviewed after data from the Department of Agriculture five-year census of agriculture are available. No revisions will be made after that date.

Reliability: Since all operations raising hogs are not included in the sample, survey estimates are subject to sampling variability. Survey results are also subject to non-sampling errors such as omissions, duplication, and mistakes in reporting, recording, and processing the data. The affects of these errors cannot be measured directly. They are minimized through rigid quality controls in the data collection process and through a careful review of all reported data for consistency and reasonableness.

To assist users in evaluating the reliability of the estimates in this report, the "**Root Mean Square Error**" is shown for selected items in the following table. The "Root Mean Square Error" is a statistical measure based on past performance and is computed using the difference between first and final estimates. The "Root Mean Square Error" for hog inventory estimates over the past 20 quarters is 1.0 percent. This means that chances are 2 out of 3 that the final estimate will not be above or below the current estimate of 62.7 million head by more than 1.0 percent. Chances are 9 out of 10 that the difference will not exceed 1.7 percent.

Reliability of September 1 Hog Estimates ¹

Item	Root Mean Square Error	90% Confidence Level		Difference Between First and Latest Estimates			Quarters	
				Average	Smallest	Largest	First Above Latest	First Below Latest
				<i>1,000 Head</i>	<i>1,000 Head</i>	<i>1,000 Head</i>	<i>Number</i>	<i>Number</i>
All Hogs & Pigs	1.0	1.7	1,066	492	72	1,386	2	18
Pig Crop	1.3	2.3	615	258	0	824	1	18
Expected Farrowings								
Next Quarter	1.3	2.2	64	30	1	91	6	14
Following Quarter	1.7	2.9	84	39	2	126	8	12

¹ Based on quarterly records for the past 20 quarters.

Information Contacts

Listed below are the commodity specialists in the Livestock Branch of the National Agricultural Statistics Service to contact for additional information.

Dan Kerestes, Chief, Livestock Branch (202) 720-3570

Livestock Section

William Weaver, Head, Livestock Section (202) 720-3570
 Bruce Boess - Hogs and Pigs (202) 720-3106
 Shawn Clark - Dairy Products (202) 690-3236
 Jason Hardegree - Milk Production and Milk Cows (202) 720-3278
 Scott Hollis - Sheep & Lambs, Goats (202) 720-4751
 Mike Miller - Cattle, Cattle on Feed (202) 720-3040
 Katy Paulsen - Livestock Slaughter (515) 284-4340
 Charmaine Wilson - Dairy Products Prices (202) 690-2168

ACCESS TO REPORTS!!

For your convenience, there are several ways to obtain NASS reports, data products, and services:

INTERNET ACCESS

All NASS reports are available free of charge on the worldwide Internet. For access, connect to the Internet and go to the NASS Home Page at: **www.nass.usda.gov**.

E-MAIL SUBSCRIPTION

All NASS reports are available by subscription free of charge direct to your e-mail address. Starting with the NASS Home Page at **www.nass.usda.gov**, under the right navigation, *Receive reports by Email*, click on **National** or **State**. Follow the instructions on the screen.

PRINTED REPORTS OR DATA PRODUCTS

CALL OUR TOLL-FREE ORDER DESK: 800-999-6779 (U.S. and Canada)
Other areas, please call 703-605-6220 FAX: 703-605-6900
(Visa, MasterCard, check, or money order acceptable for payment.)

ASSISTANCE

For **assistance** with general agricultural statistics or further information about NASS or its products or services, contact the **Agricultural Statistics Hotline** at **800-727-9540**, 7:30 a.m. to 4:00 p.m. ET, or e-mail: **nass@nass.usda.gov**.

The U.S. Department of Agriculture (USDA) prohibits discrimination in all its programs and activities on the basis of race, color, national origin, age, disability, and where applicable, sex, marital status, familial status, parental status, religion, sexual orientation, genetic information, political beliefs, reprisal, or because all or part of an individual's income is derived from any public assistance program. (Not all prohibited bases apply to all programs.) Persons with disabilities who require alternative means for communication of program information (Braille, large print, audiotape, etc.) should contact USDA's TARGET Center at (202) 720-2600 (voice and TDD).

To file a complaint of discrimination, write to USDA, Director, Office of Civil Rights, 1400 Independence Avenue, S.W., Washington, D.C. 20250-9410, or call (800) 795-3272 (voice) or (202) 720-6382 (TDD). USDA is an equal opportunity provider and employer.

USDA Data Users' Meeting

October 16, 2006

Doubletree Chicago O'Hare Airport - Rosemont

Chicago, Illinois

(847) 292-9100

The USDA's National Agricultural Statistics Service will be organizing an open forum for data users. The purpose will be to provide updates on pending changes in the various statistical and information programs and seek comments and input from data users. Other USDA agencies to be represented will include the Agricultural Marketing Service, the Economic Research Service, the Foreign Agricultural Service, and World Agricultural Outlook Board. The Foreign Trade Division from the Census Bureau will also be included in the meeting.

For registration details or additional information for the Data Users' Meeting, see the NASS homepage at www.nass.usda.gov/forum/ or contact Amy Jenkins (NASS) at (202) 690-8141 or at amy_jenkins@nass.usda.gov.

This Data Users' Meeting precedes an Industry Outlook meeting that will be held at the same location on October 17, 2006. The Outlook meeting brings together analysts from various commodity sectors to discuss the outlook situation. For more information about the outlook meeting and to register contact Jim Robb (Livestock and Marketing Information Center) at (720) 544-2941 or at robb@lmic.info.