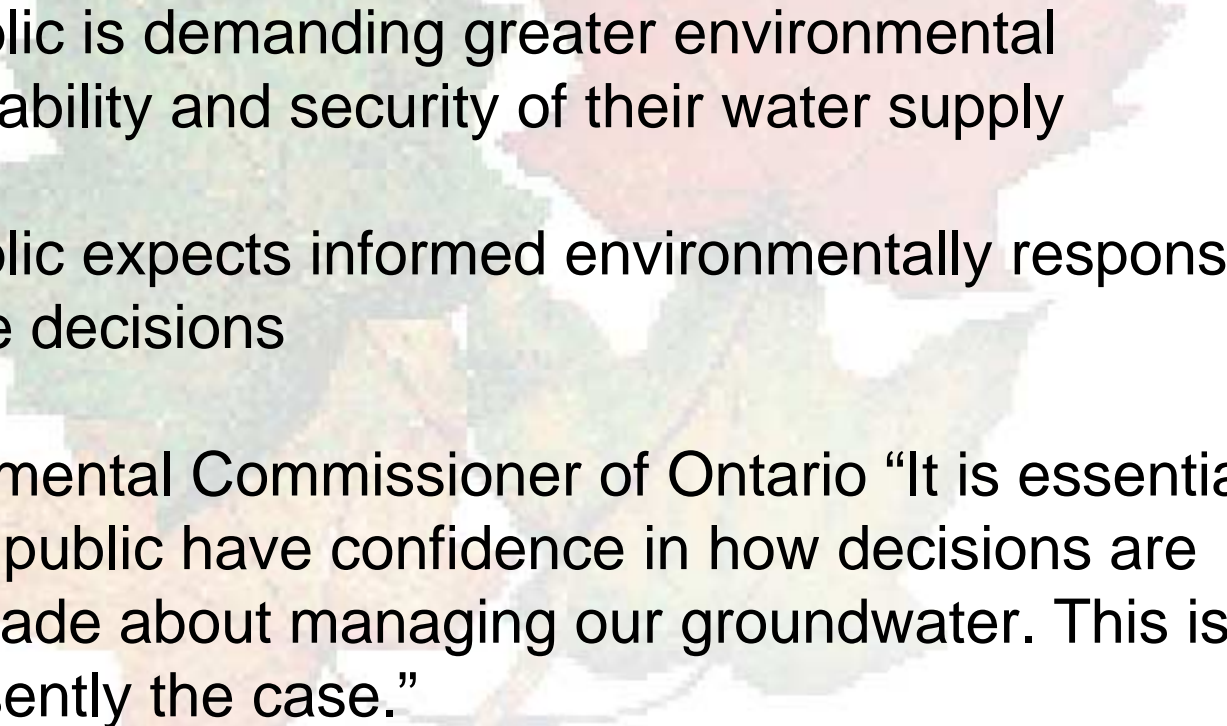




... and land managers are under pressure to be the best environmental stewards ...

- 
- The public is demanding greater environmental accountability and security of their water supply
 - The public expects informed environmentally responsible land use decisions
 - Environmental Commissioner of Ontario “It is essential that the public have confidence in how decisions are being made about managing our groundwater. This is not presently the case.”

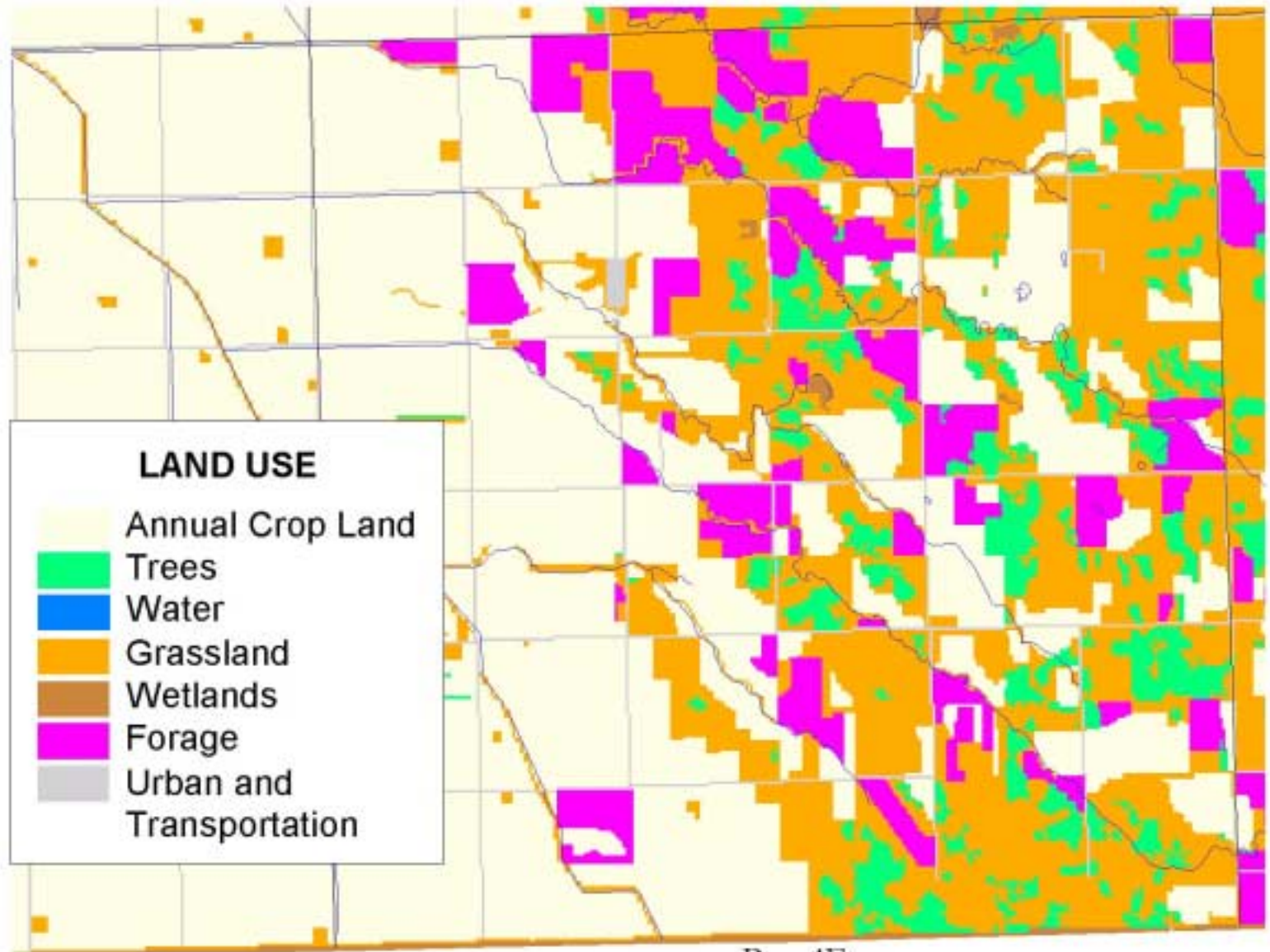
... and land managers are under pressure to be the best environmental stewards ...



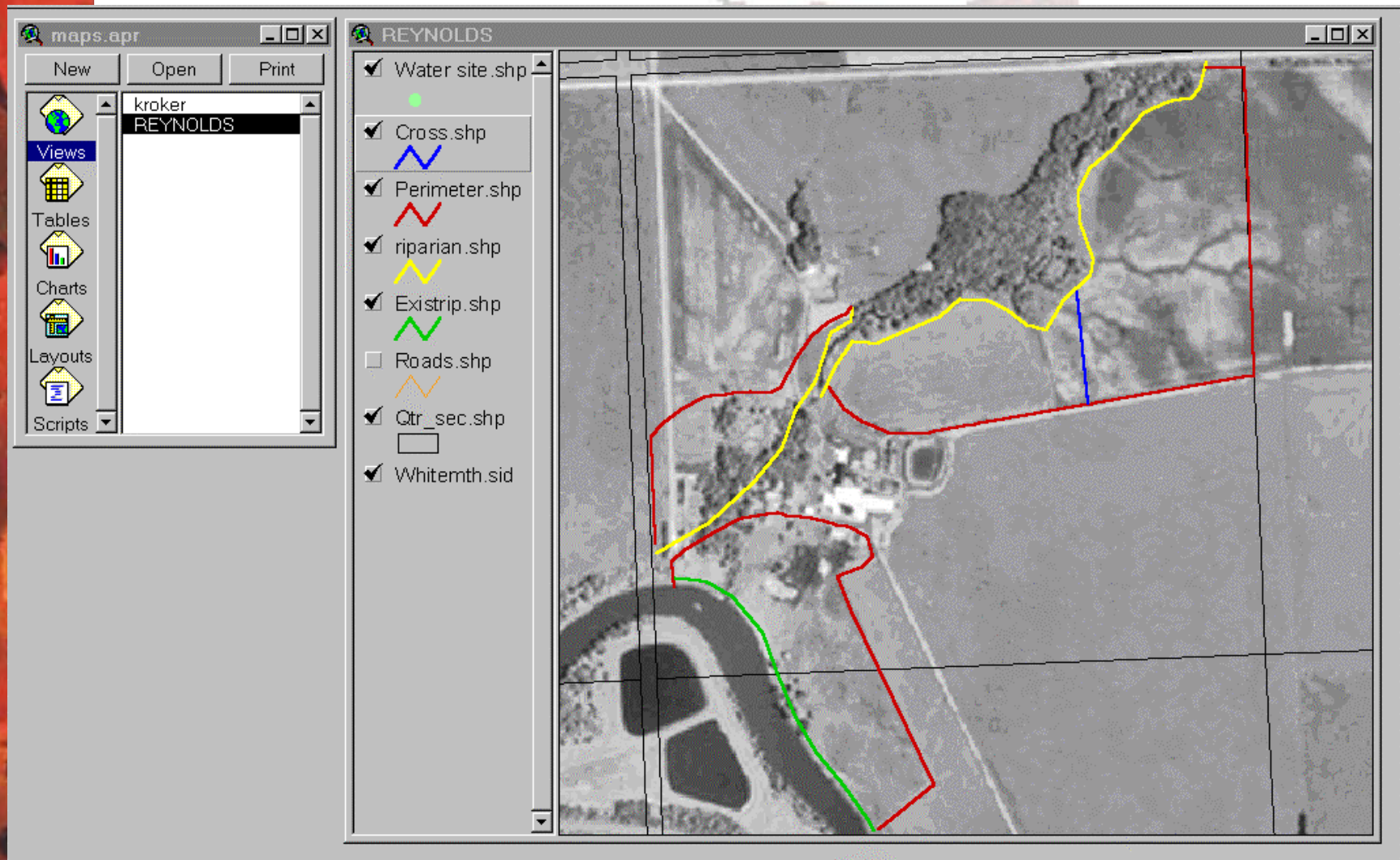
... and land managers are under pressure to be the best environmental stewards ...



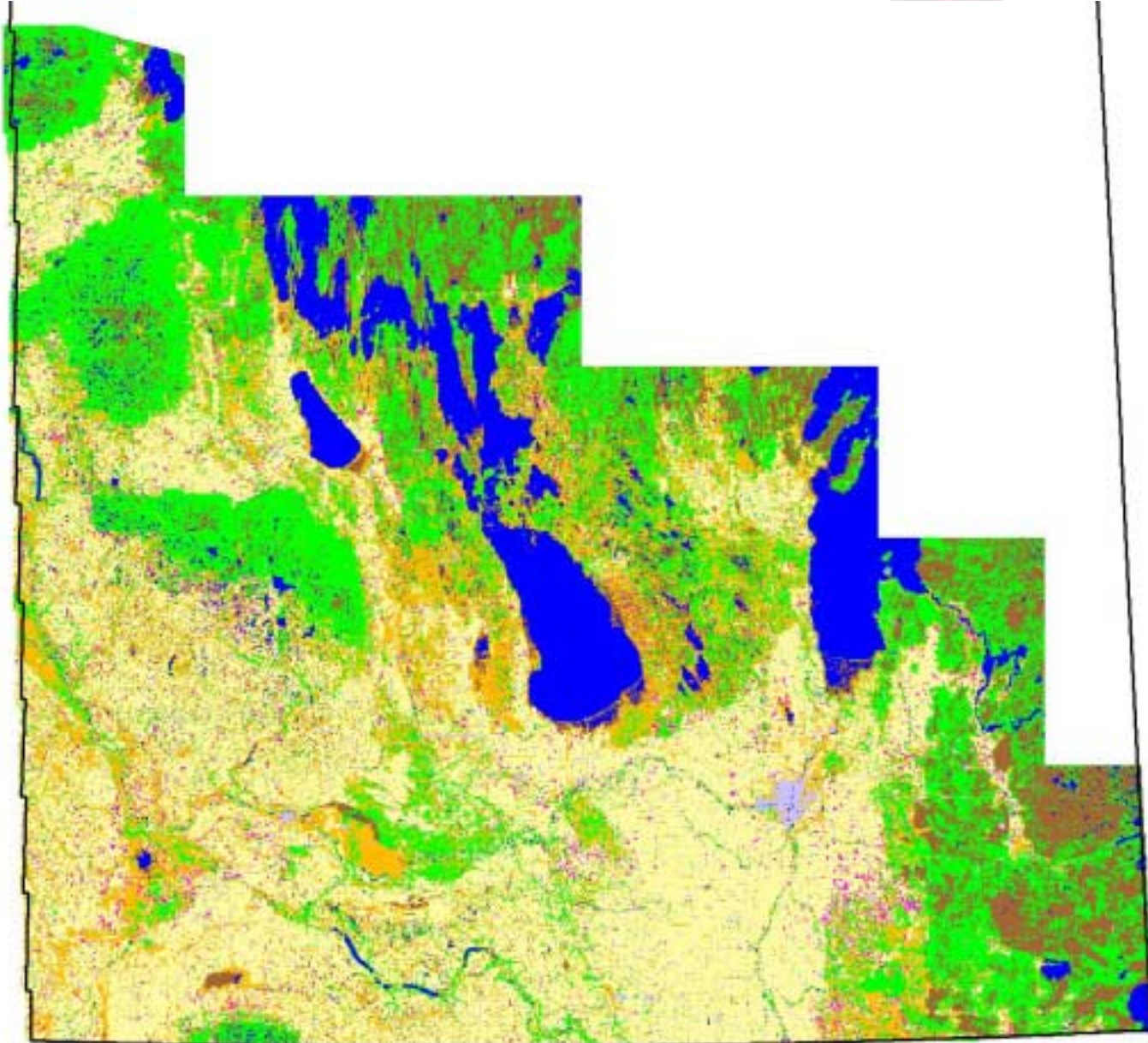
... and land managers are under pressure to be the best environmental stewards ...



... and land managers are under pressure to be the best environmental stewards ...

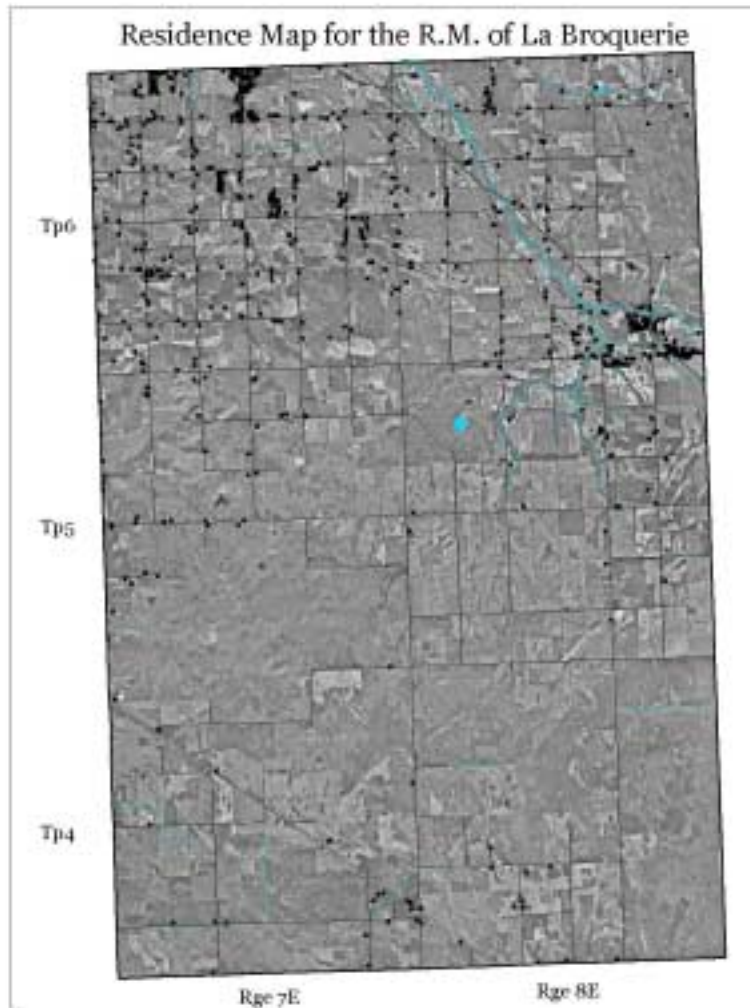


... and land managers are under pressure to be the best environmental stewards ...

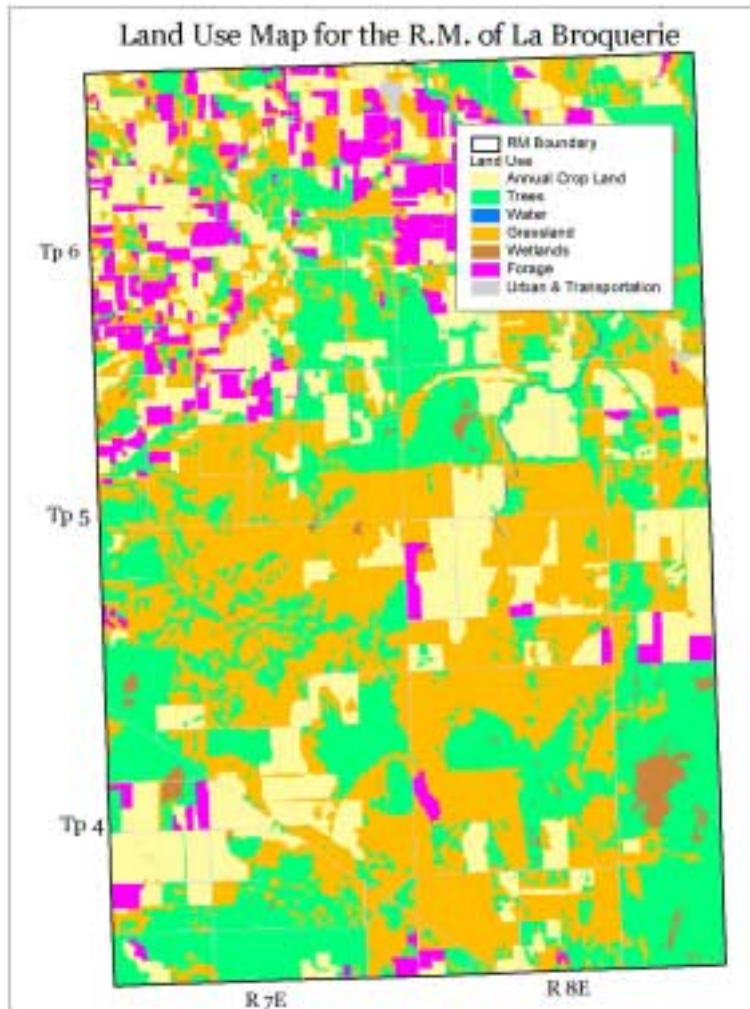


... while land use decisions are becoming more complex

- Residences

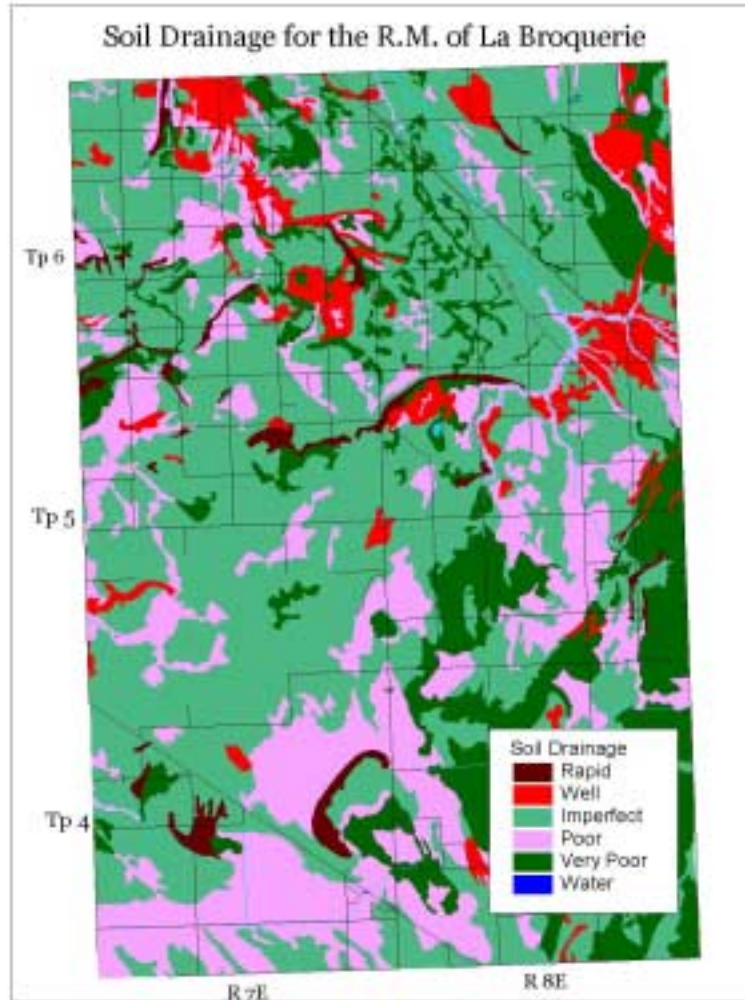


... while land use decisions are becoming more complex



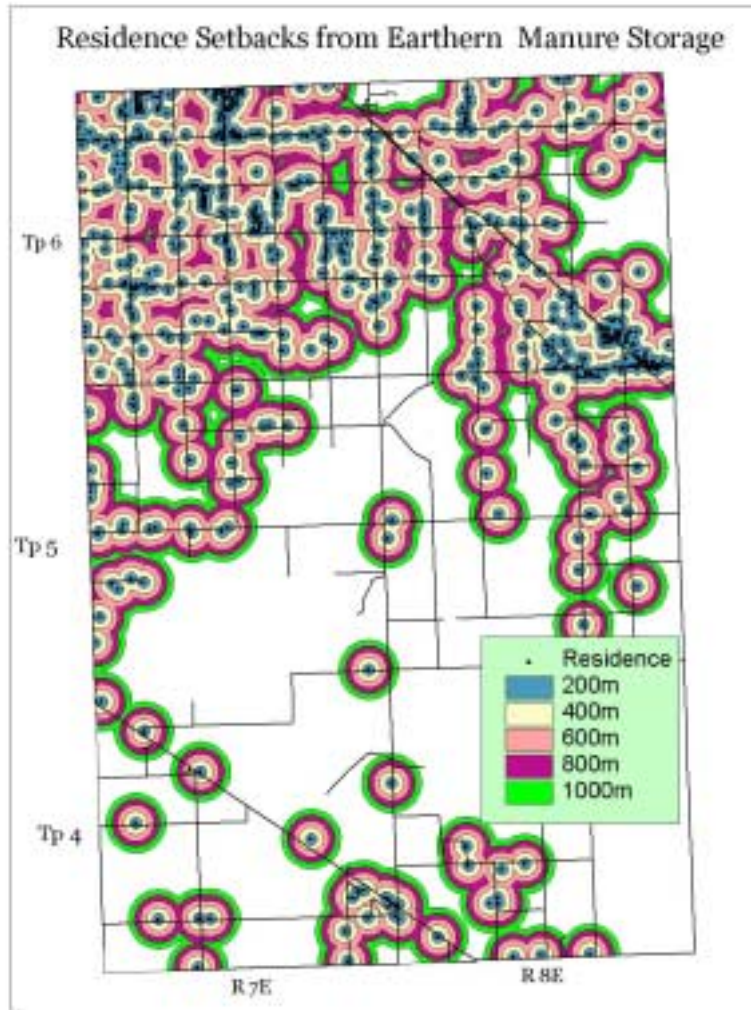
- Land use

... while land use decisions are becoming more complex



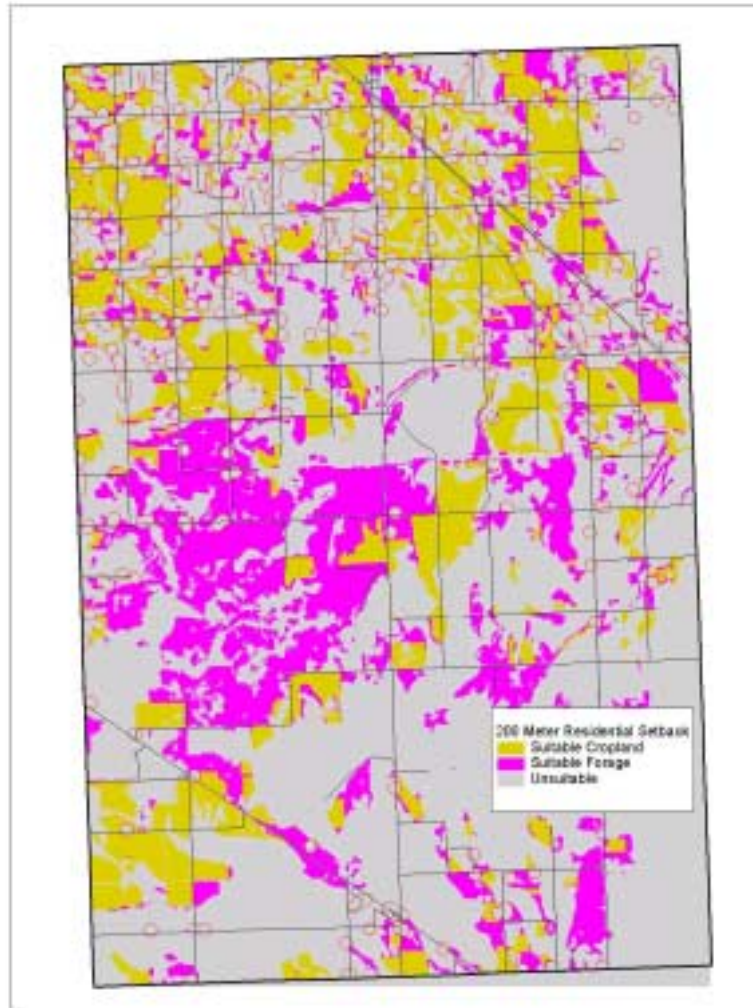
- Soil drainage

... while land use decisions are becoming more complex



- Buffer zones

... while land use decisions are becoming more complex



- Available land for manure spreading

Informed decisions require accurate information which is not always available

- Diverse information is required for land use planning
Land use - forest cover, ownership, riparian habitat, zoning, protected areas ...

