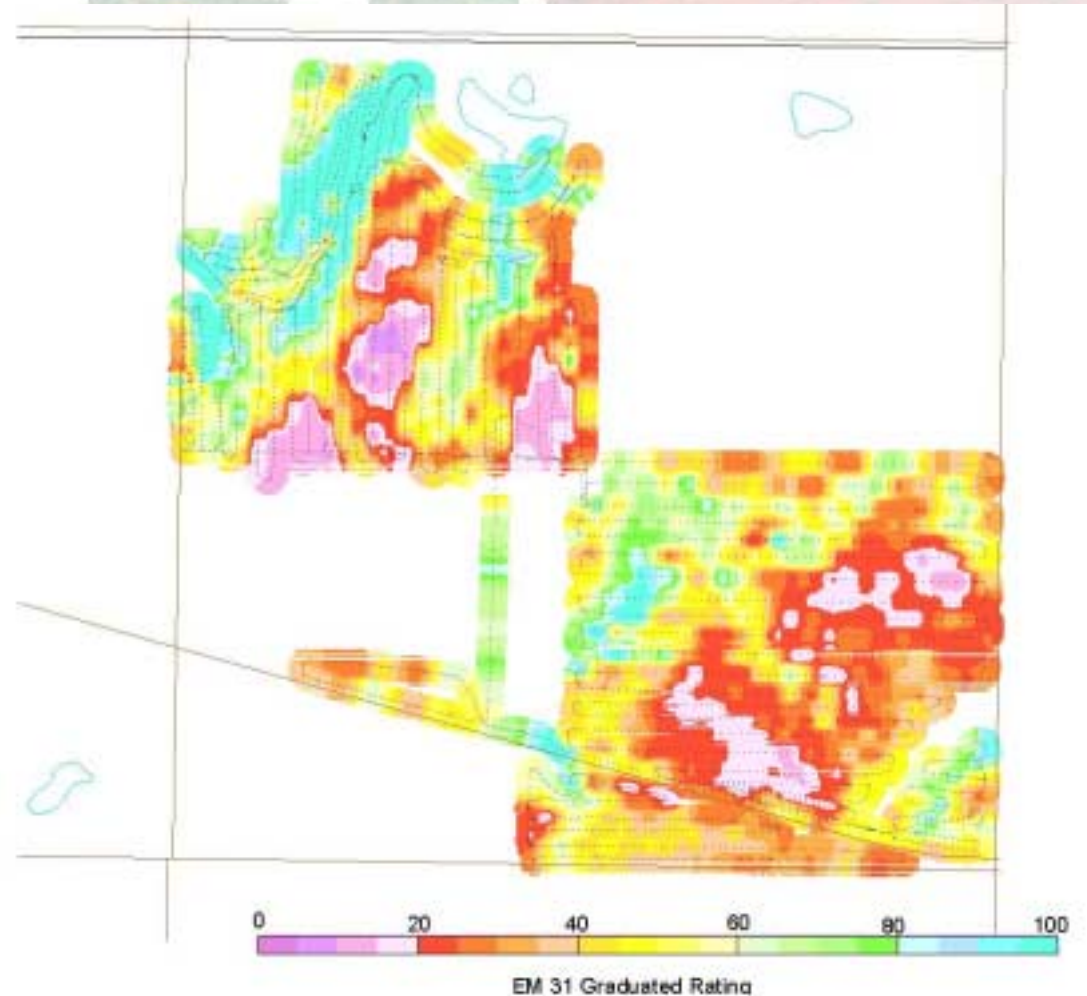


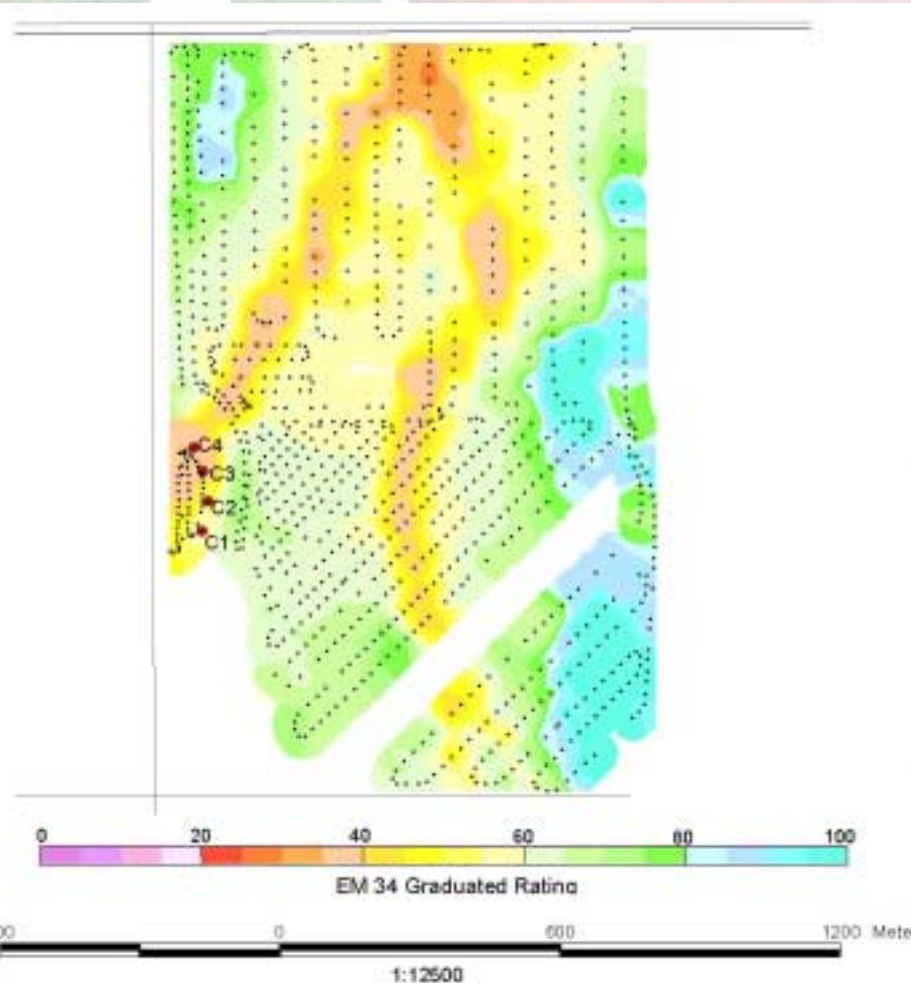
Informed decisions require accurate information which is not always available

- Diverse information is required for land use planning
Landscape - soils, topography, land capability ...



Informed decisions require accurate information which is not always available

- Diverse information is required for land use planning
Water - groundwater wells, surface water quality, watersheds and hydrology ...

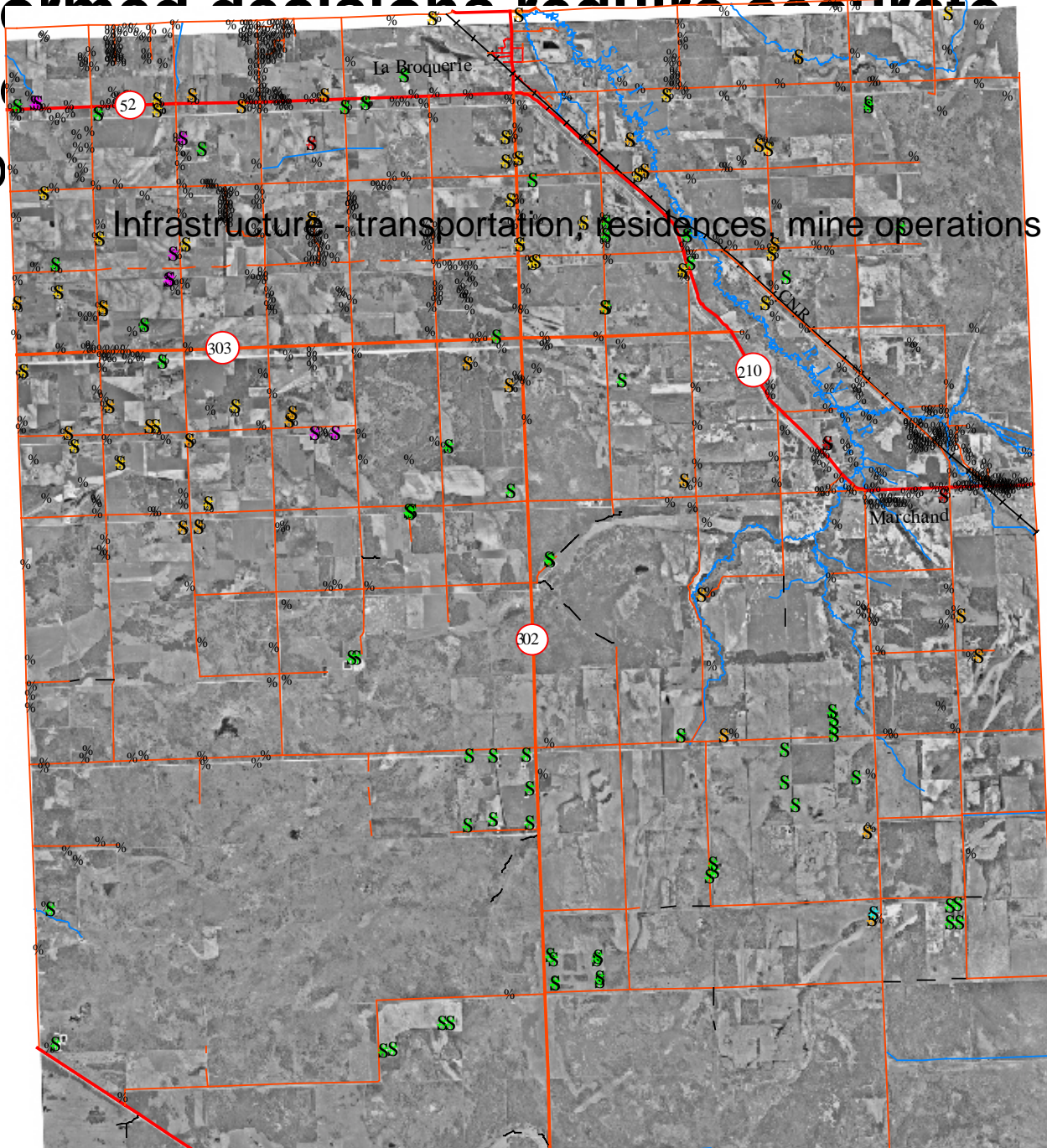


Informed decisions require accurate

information

- D

Infrastructure - transportation, residences, mine operations ...

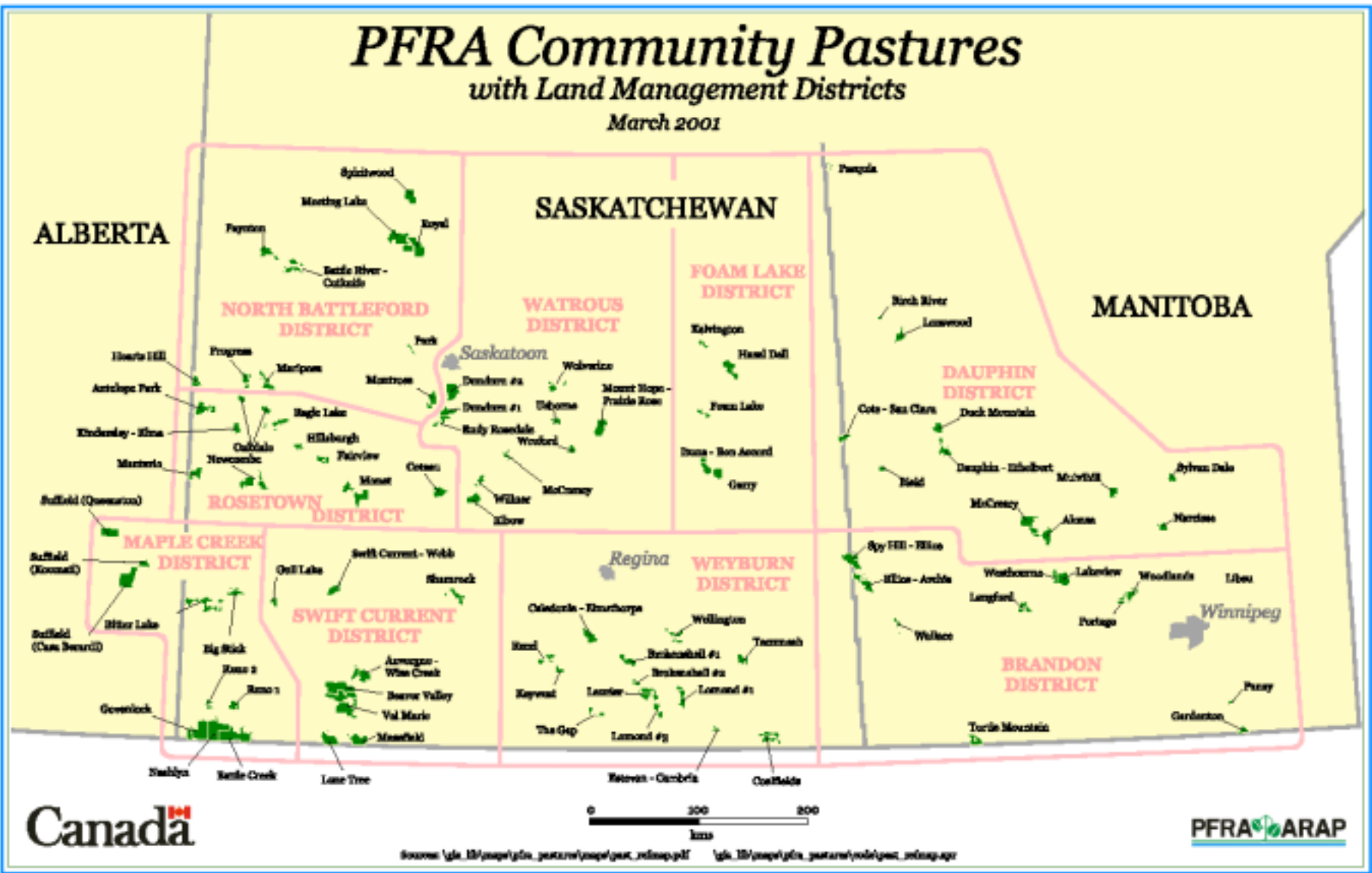


able
ring

... And what is available is not always readily accessible

PFRA Community Pastures with Land Management Districts

March 2001



... And what is available is not always readily accessible

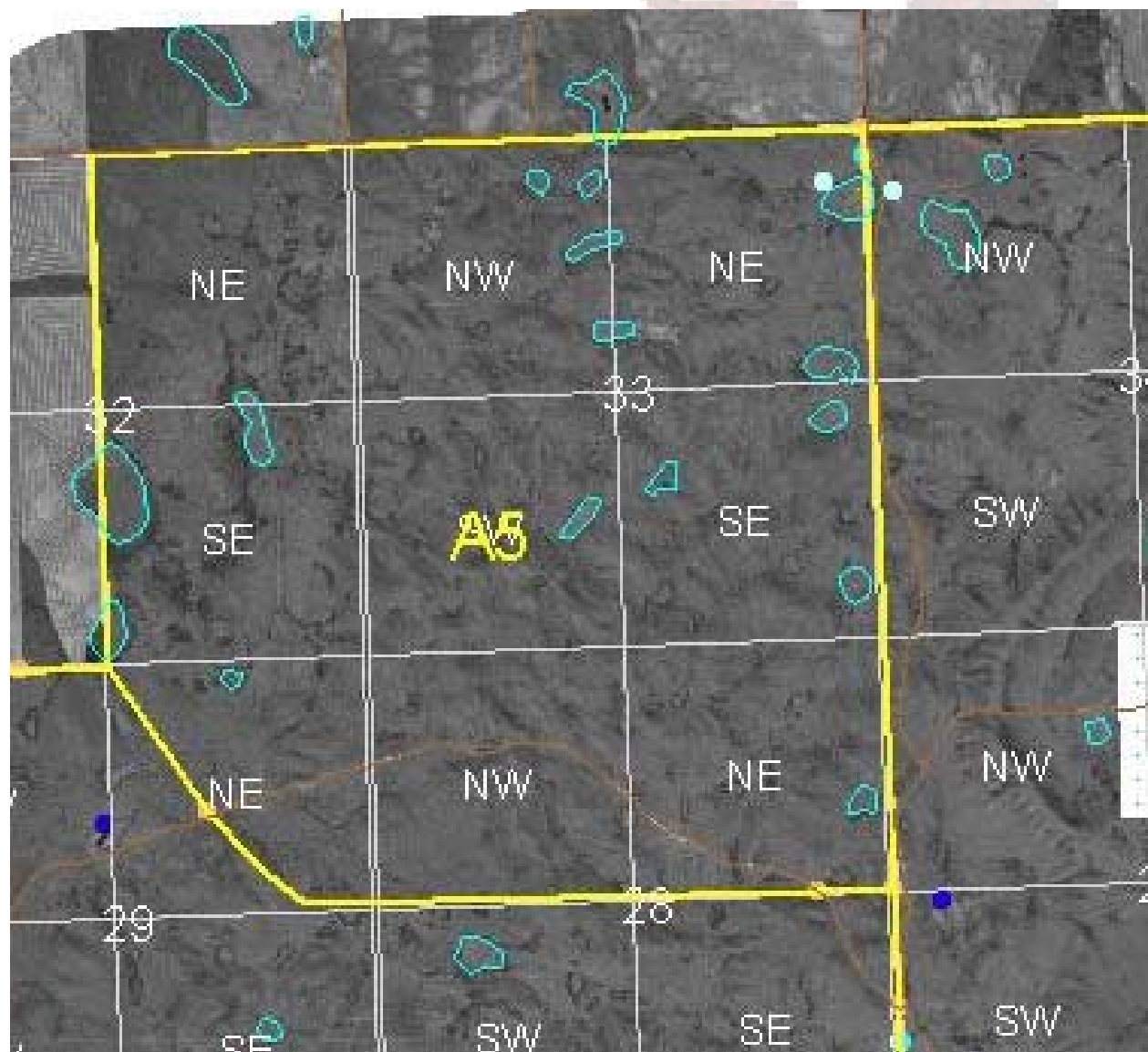
Canada Agriculture and Agri-Food Canada
Ministère de l'Agriculture, des Pêcheries et des Affaires Rurales



LEGEND

- HYDROLOGY
- TRANSPORTATION
- Pasture Outline
- Pasture Fab
- Pasture GPS Data
- anchor post
- dam
- dugout
- gate
- petroleum
- trough
- various
- water well
- Seeded 1994 Survey
- Crested Wheatgrass

... And what is available is not always readily accessible



... And what is available is not always readily accessible

The screenshot displays the ArcView GIS 3.2a interface. The main window shows a map of Canada with a 'Pasture Conditions' legend and a 'Pasture Conditions Update' dialog box.

Pasture Conditions Update Dialog:

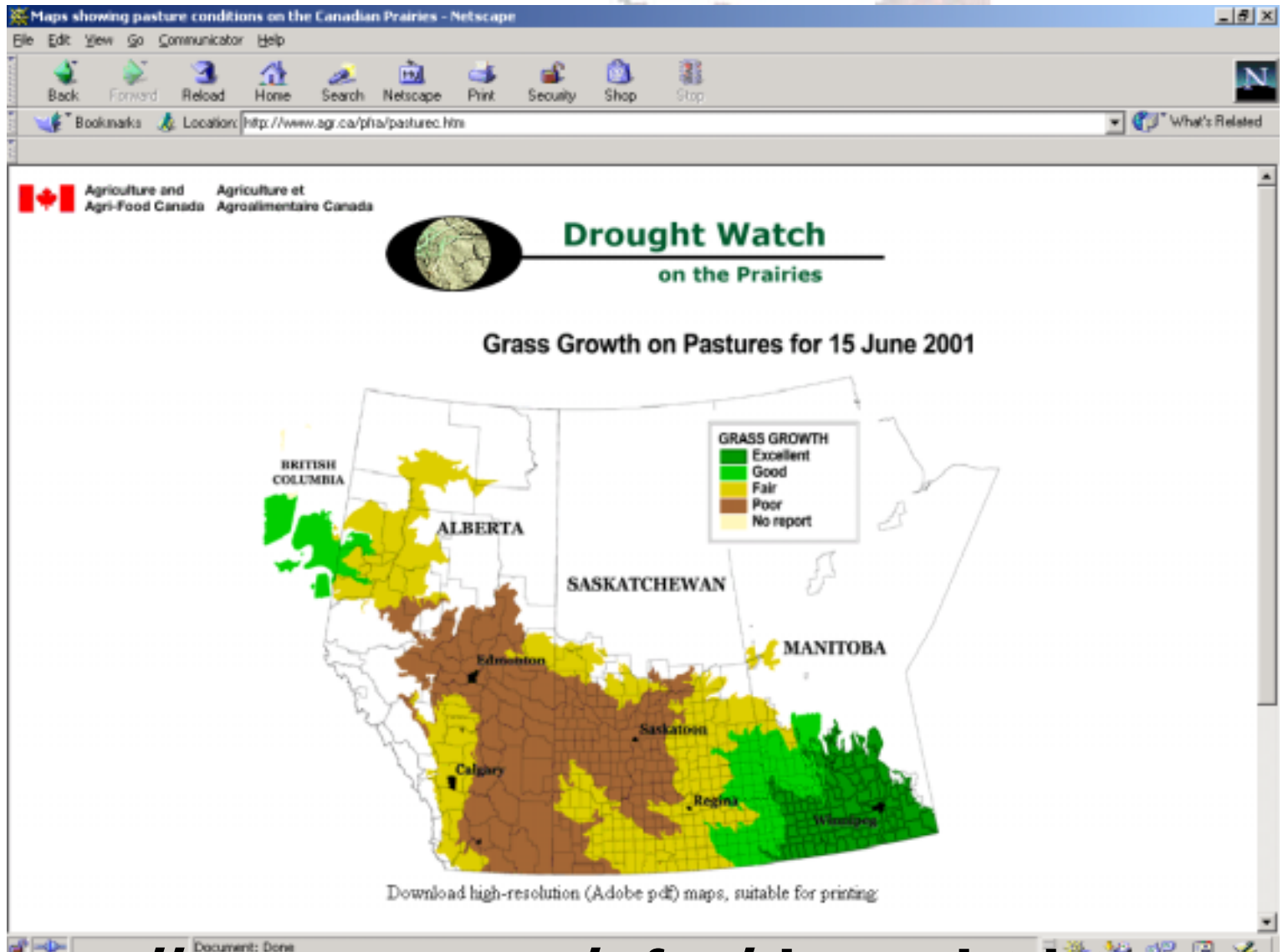
- 1) Navigate to Area of Interest
Tools: [Zoom In], [Zoom Out], [Hand], [Home], [Print], [Info]
- 2) Select polygons from Pasture Conditions
[Select Polygons]
- 3) Select value for polygon
UPDATE VALUES
 Poor
 Fair
 Good
 Excellent
 No Report
- 4) QUIT updating Pasture Conditions:
[Pasture Updates Complete]

Pasture Conditions Legend:

- PFRADistrict
- City
- PFRA Office
- Rural Admin Bound
- EcoDistricts_Pasture
 - POOR (Brown)
 - FAIR (Yellow)
 - GOOD (Light Green)
 - EXCELLENT (Dark Green)
 - NO REPORT (White)
 - NO DATA (Red)
- Provincial Border

The map shows a distribution of pasture conditions across Canada, with 'EXCELLENT' (dark green) and 'GOOD' (light green) conditions concentrated in the western and southern regions, and 'POOR' (brown) and 'FAIR' (yellow) conditions more prevalent in the central and northern regions. Provincial borders are shown as thin black lines.

... And what is available is not always readily accessible



<http://www.agr.ca/pfra/drought.htm> Canada

Informed decisions need both technical skills and knowledge to make informed landuse decisions ...

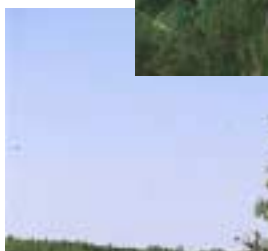
PFRA has expertise, information and a mandate
- soils, water, land use, environmental

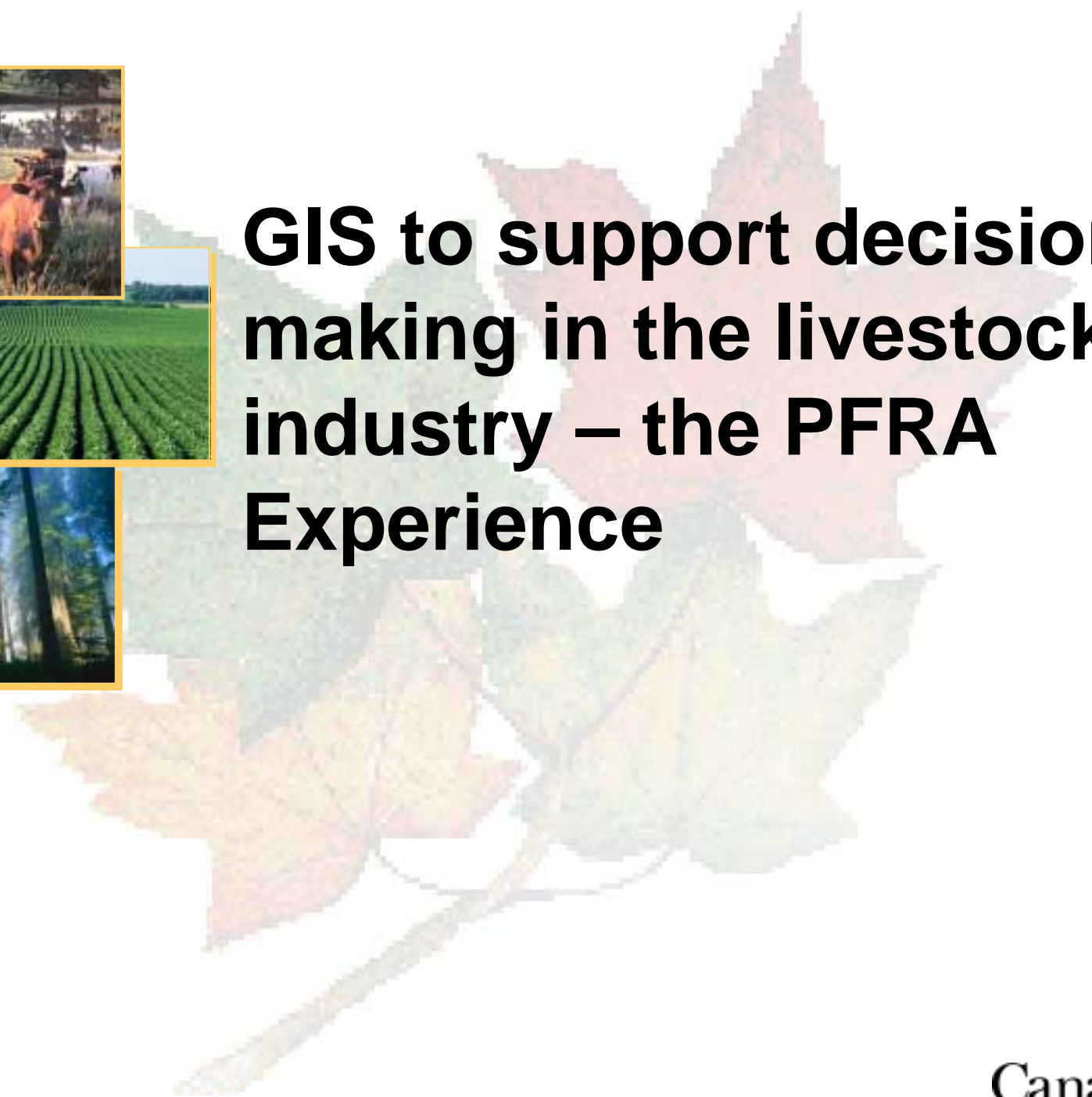


... For the benefit of all Canadians ...

- Promote responsible decision making for a safe and healthy environment
- Build public confidence that land management decisions are based on the best available information

... And building Canada's reputation in environmental stewardship





GIS to support decision making in the livestock industry – the PFRA Experience

