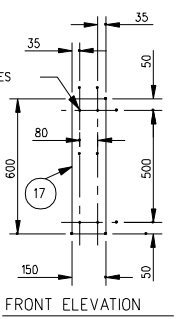
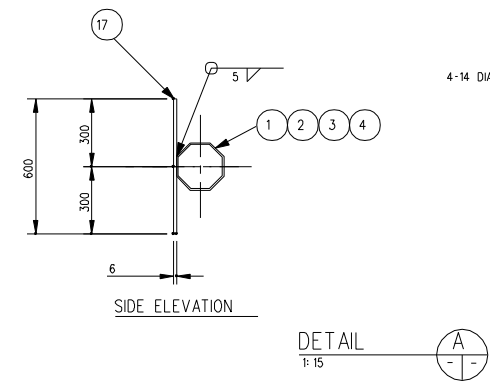
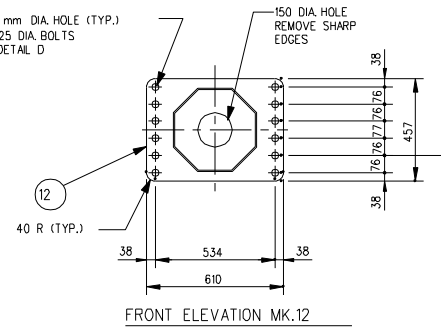
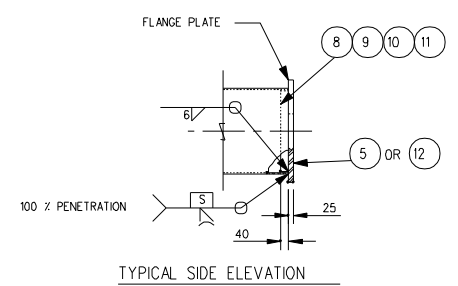
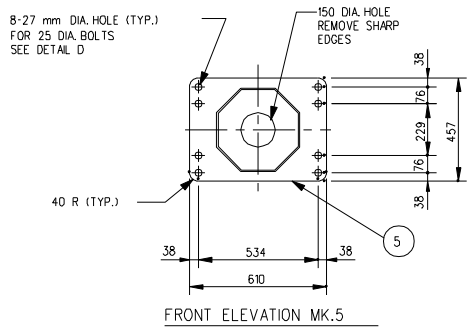


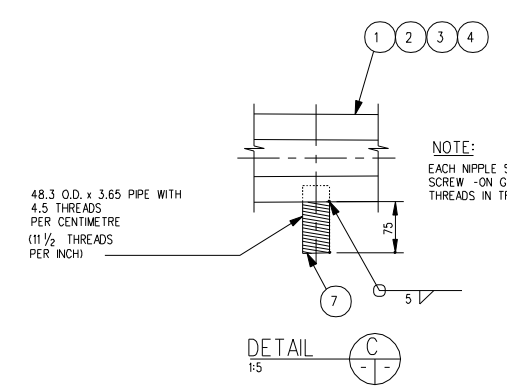
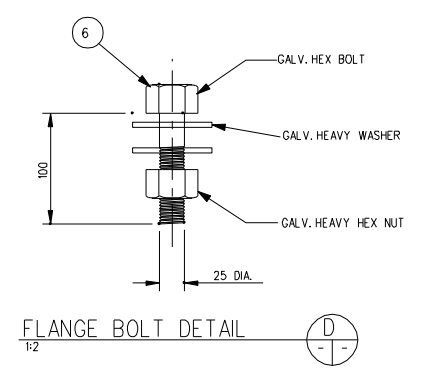
EXTENSION ARM ELEVATION
SCALE: 1:50



STOCK CODE	DESCRIPTION	DIM. 'A'	DIM. 'B'
17928	7.5 m ADVANCE SIGNAL EXTENSION ARM	7500	4700
17929	9.0 m ADVANCE SIGNAL EXTENSION ARM	9000	6200
17930	10.5 m ADVANCE SIGNAL EXTENSION ARM	10500	7700
17931	15.0 m ADVANCE SIGNAL EXTENSION ARM	15000	12200
17927	VERTICAL SHAFT SEE COMPONENT NO. E-016 W SHEET NO. S10	SHAFT SHALL BE INTER-CHANGEABLE WITH TRAFFIC SIGNAL ARM & ADVANCE SIGNAL ARM	



ARM FLANGE PLATE DETAIL
1:15



BILL OF MATERIALS

MK. NO.	QTY. REQ'D.	DESCRIPTION	SIZE	MATERIAL (G40.21-M-300W U/N)	REMARKS	LINE NO.
		7.5 m CANTILEVER ARM EXTENSION				1
1	1	OCTAGONAL SECTION SHAFT	300 A/F-100 A/F x 6.350 x 7463			2
5	1	FLANGE PLATE	25 x 457 x 610			3
6	8	FLANGE BOLTS	25 DIA. x 100	ASTM A325	GALV.	4
7	1	NIPPLE	38 DIA. x 100	SCH. 40 ASTM A53 GR. B		5
8	1	BACK-UP STRIP PLATE	6 x 40			6
13	1	CAP PLATE	12 x 140 DIA.			7
17	2	SIGN MOUNTING PLATE	6 x 150 x 600			8
		9.0 m CANTILEVER ARM EXTENSION				9
		9.0 m CANTILEVER ARM EXTENSION				10
2	1	OCTAGONAL SECTION SHAFT	300 A/F-125 A/F x 6.350 x 8963			11
5	1	FLANGE PLATE	25 x 457 x 610			12
6	8	FLANGE BOLTS	25 DIA. x 100	ASTM A325	GALV.	13
7	1	NIPPLE	38 DIA. x 100	SCH. 40 ASTM A53 GR. B		14
9	1	BACK-UP STRIP PLATE	6 x 40			15
14	1	CAP PLATE	12 x 170 DIA.			16
17	2	SIGN MOUNTING PLATE	6 x 150 x 600			17
		10.5 m CANTILEVER ARM EXTENSION				18
		10.5 m CANTILEVER ARM EXTENSION				19
3	1	OCTAGONAL SECTION SHAFT	320 A/F-125 A/F x 6.350 x 10463			20
5	1	FLANGE PLATE	25 x 457 x 610			21
6	8	FLANGE BOLTS	25 DIA. x 100	ASTM A325	GALV.	22
7	1	NIPPLE	38 DIA. x 100	SCH. 40 ASTM A53 GR. B		23
10	1	BACK-UP STRIP PLATE	6 x 40			24
15	1	CAP PLATE	12 x 170 DIA.			25
17	2	SIGN MOUNTING PLATE	6 x 150 x 600			26
		15.0 m CANTILEVER ARM EXTENSION				27
		15.0 m CANTILEVER ARM EXTENSION				28
4	1	OCTAGONAL SECTION SHAFT	380 A/F-150 A/F x 6.350 x 14963			29
12	1	FLANGE PLATE	25 x 457 x 610			30
6	12	FLANGE BOLTS	25 DIA. x 100	ASTM A325	GALV.	31
7	1	NIPPLE	38 DIA. x 100	SCH. 40 ASTM A53 GR. B		32
11	1	BACK-UP STRIP PLATE	6 x 40			33
16	1	CAP PLATE	12 x 170 DIA.			34
17	2	SIGN MOUNTING PLATE	6 x 150 x 600			35
						36
						37

- NOTES:
- ALL MATERIALS, EXCEPT STAINLESS STEEL ITEMS, SHALL BE HOT DIP GALVANIZED IN ACCORDANCE WITH C.S.A. STANDARD G164 WITH NET RETENTION OF 600 g/m.
 - STAMP FLANGE PLATES WITH 'STOCK CODE NUMBER'.
 - SHIP WITH BOLTS C/W NUTS AND WASHERS IN FLANGE.

DATE	BY	DESCRIPTION



ADVANCE WARNING SIGN STRUCTURE

TYPE 6-COMBINATION CANTILEVER
7.5 m, 9.0 m, 10.5 m, AND 15.0 m CANTILEVER
EXTENSION ARM-ADVANCE WARNING SIGN

ACCEPTED BY:	
TRAFFIC OPERATIONS ENGINEER	DATE
APPROVED BY:	
DIRECTOR OF TRAFFIC ENGINEERING	
DATE	
PROJECT ENGINEER	DATE
DESIGN	BY: S.S.R. CHECKED: S.S.R.
DETAILS	BY: N.B.G. TRACED: N.B.G. CHECKED: S.S.R.
	SCALE: AS SHOWN
COMPONENT NO. E-016 R	SHEET No. S11