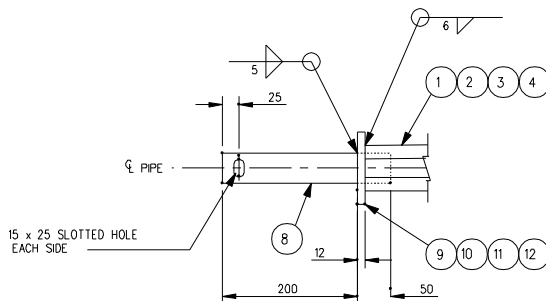
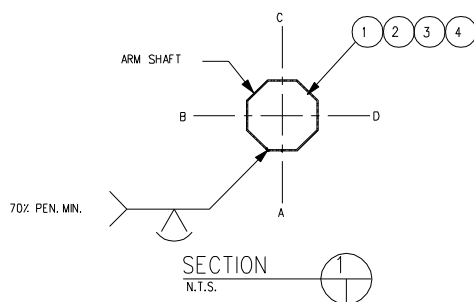


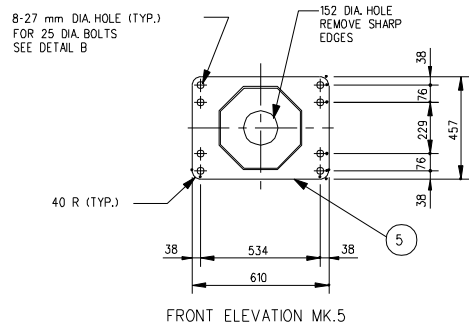
EXTENSION ARM ELEVATION
SCALE: 1:50



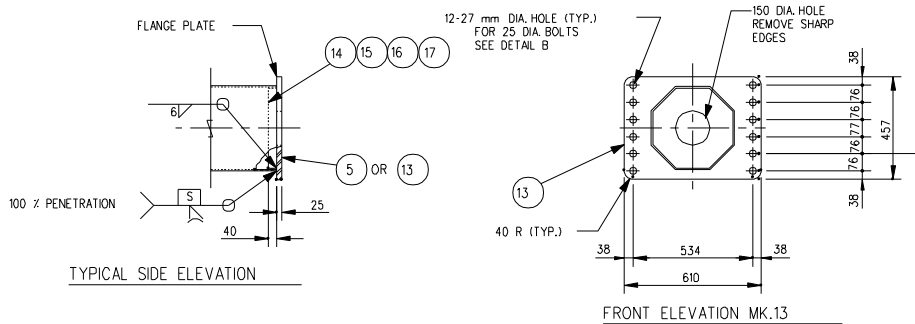
DETAIL
SCALE: 1:5



STOCK CODE	DESCRIPTION	DIM. 'A'	DIM. 'B'
17923	7.5m TRAFFIC SIGNAL EXTENSION ARM	7500	3800
17924	9.0m TRAFFIC SIGNAL EXTENSION ARM	9000	5300
17925	10.5m TRAFFIC SIGNAL EXTENSION ARM	10500	6800
17926	15.0m TRAFFIC SIGNAL EXTENSION ARM	15000	11300
17927	VERTICAL SHAFT SEE COMPONENT NO. E-016 W SHEET NO. S10	SHAFT SHALL BE INTER-CHANGEABLE WITH TRAFFIC SIGNAL ARM & ADVANCE SIGNAL ARM	



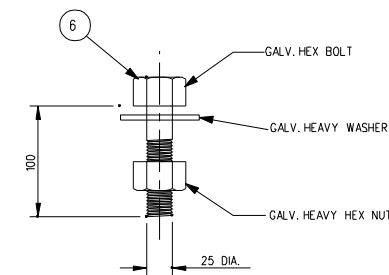
FRONT ELEVATION MK.5



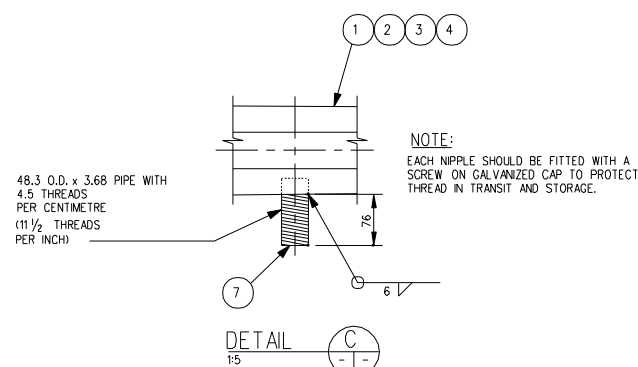
TYPICAL SIDE ELEVATION

FRONT ELEVATION MK.13

ARM FLANGE PLATE DETAIL
1:5



FLANGE BOLT DETAIL
1:2



DETAIL
1:5

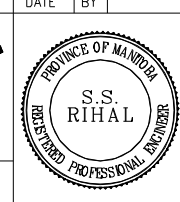
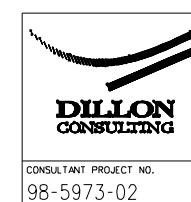
NOTES:

- ALL MATERIALS, EXCEPT STAINLESS STEEL ITEMS, SHALL BE HOT DIP GALVANIZED IN ACCORDANCE WITH C.S.A. STANDARD G164 WITH NET RETENTION OF 600 g/m.
- STAMP FLANGE PLATES WITH 'STOCK CODE NUMBER'.
- SHIP WITH BOLTS C/W NUTS AND WASHERS IN FLANGE.

BILL OF MATERIALS

MK. NO.	QTY. REQ'D.	DESCRIPTION	SIZE	MATERIAL (G40.21-M-300W U/N)	REMARKS	LINE NO.
7.5 m CANTILEVER ARM EXTENSION						
1	1	OCTAGONAL SECTION SHAFT	300 A/F-100 A/F x 4.763 x 7263			1
5	1	FLANGE PLATE	25 x 457 x 610			2
6	8	FLANGE BOLTS	25 DIA x 100	ASTM A325	GALV.	3
7	1	NIPPLE	38 DIA x 100	SCH. 40, ASTM A53 GR.B		4
8	1	TENON PIPE	60.3 O.D. x 3.91 x 250	SCH. 40, ASTM A53 GR.B		5
9	1	TENON PLATE	12 x 140 DIA.			6
14	1	BACK-UP STRIP PLATE	6 x 40			7
9.0 m CANTILEVER ARM EXTENSION						
2	1	OCTAGONAL SECTION SHAFT	300 A/F-125 A/F x 4.763 x 8763			8
5	1	FLANGE PLATE	25 x 457 x 610			9
6	8	FLANGE BOLTS	25 DIA x 100	ASTM A325	GALV.	10
7	1	NIPPLE	38 DIA x 100	SCH. 40, ASTM A53 GR.B		11
8	1	TENON PIPE	60.3 O.D. x 3.91 x 250	(SCH.40) ASTM A53 GR.B		12
10	1	TENON PLATE	12 x 170 DIA.			13
15	1	BACK-UP STRIP PLATE	6 x 40			14
10.5 m CANTILEVER ARM EXTENSION						
1	1	OCTAGONAL SECTION SHAFT	300 A/F-125 A/F x 4.763 x 10263			15
5	1	FLANGE PLATE	25 x 457 x 610			16
6	8	FLANGE BOLTS	25 DIA x 100	ASTM A325	GALV.	17
7	1	NIPPLE	38 DIA x 100	SCH. 40, ASTM A53 GR.B		18
8	1	TENON PIPE	60.3 O.D. x 3.91 x 250	(SCH.40) ASTM A53 GR.B		19
11	1	TENON PLATE	12 x 170 DIA.			20
16	1	BACK-UP STRIP PLATE	6 x 40			21
15.0 m CANTILEVER ARM EXTENSION						
1	1	OCTAGONAL SECTION SHAFT	380 A/F-150 A/F x 6.350 x 14763			22
13	1	FLANGE PLATE	25 x 457 x 610			23
6	12	FLANGE BOLTS	25 DIA x 100	ASTM A325	GALV.	24
7	1	NIPPLE	38 DIA x 100	SCH. 40, ASTM A53 GR.B		25
8	1	TENON PIPE	60.3 O.D. x 3.91 x 250	(SCH.40) ASTM A53 GR.B		26
12	1	TENON PLATE	12 x 192 DIA.			27
17	1	BACK-UP STRIP PLATE	6 x 40			28
15.0 m CANTILEVER ARM EXTENSION						
1	1	OCTAGONAL SECTION SHAFT	380 A/F-150 A/F x 6.350 x 14763			29
13	1	FLANGE PLATE	25 x 457 x 610			30
6	12	FLANGE BOLTS	25 DIA x 100	ASTM A325	GALV.	31
7	1	NIPPLE	38 DIA x 100	SCH. 40, ASTM A53 GR.B		32
8	1	TENON PIPE	60.3 O.D. x 3.91 x 250	(SCH.40) ASTM A53 GR.B		33
12	1	TENON PLATE	12 x 192 DIA.			34
17	1	BACK-UP STRIP PLATE	6 x 40			35
15.0 m CANTILEVER ARM EXTENSION						
1	1	OCTAGONAL SECTION SHAFT	380 A/F-150 A/F x 6.350 x 14763			36
13	1	FLANGE PLATE	25 x 457 x 610			37
6	12	FLANGE BOLTS	25 DIA x 100	ASTM A325	GALV.	38
7	1	NIPPLE	38 DIA x 100	SCH. 40, ASTM A53 GR.B		39
8	1	TENON PIPE	60.3 O.D. x 3.91 x 250	(SCH.40) ASTM A53 GR.B		40
12	1	TENON PLATE	12 x 192 DIA.			41
17	1	BACK-UP STRIP PLATE	6 x 40			42

DATE	BY	DESCRIPTION



TRAFFIC SIGNAL STRUCTURE
TYPE 7-COMBINATION CANTILEVER
7.5 m, 9.0 m, 10.5 m, AND 15.0 m CANTILEVER
EXTENSION ARM-TRAFFIC SIGNAL

ACCEPTED BY:	DATE
TRAFFIC OPERATIONS ENGINEER	
APPROVED BY:	DATE
DIRECTOR OF TRAFFIC ENGINEERING	
PROJECT ENGINEER	
DESIGN	BY: S.S.R. CHECKED: S.S.R.
DETAILS	BY: N.B.G. TRACED: N.B.G. CHECKED: S.S.R.
SCALE: AS SHOWN	COMPONENT NO. E-016 S
SHEET No. S12	