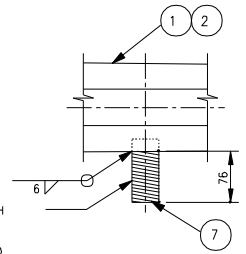


EXTENSION ARM ELEVATION
SCALE: 1:20

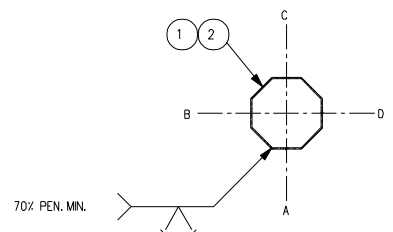
STOCK CODE	DESCRIPTION	DIM. 'A'	DIM. 'B'
40163	6.7m CORRIDOR ARM	6700	5800
17894	6.7m SIGNAL ARM	6700	6500
40164	8.2m CORRIDOR ARM	8200	7300
17895	8.2m SIGNAL ARM	8200	8000



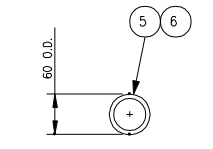
NOTE:
1. THE NIPPLE SHOULD BE FITTED WITH A SCREW-ON GALVANIZED CAP TO PROTECT THREAD IN TRANSIT AND STORAGE.

48.3 O.D. x 3.65 PIPE WITH 4.5 THREADS PER CENTIMETRE (1 1/2 THREADS PER INCH.)

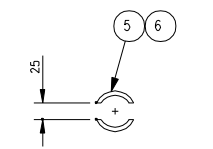
DETAIL
SCALE: 1:5



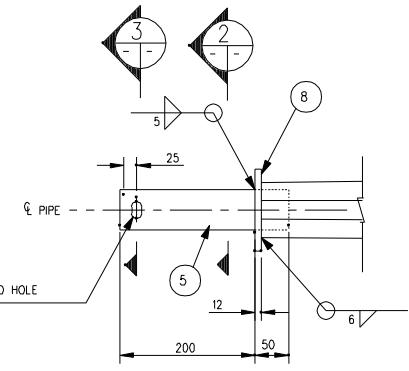
SECTION 1
N.T.S.



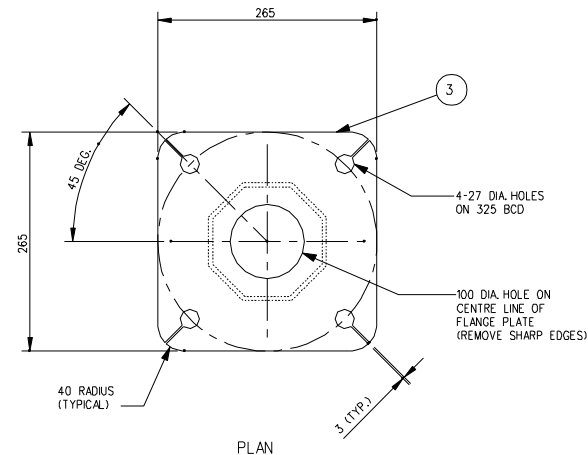
SECTION 2
SCALE: 1:5



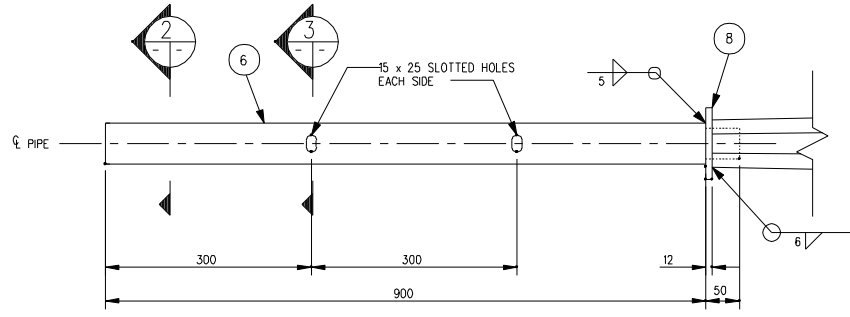
SECTION 3
SCALE: 1:5



SIGNAL ARM

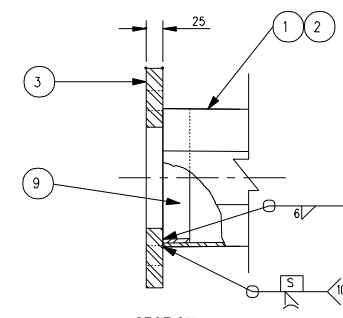


PLAN

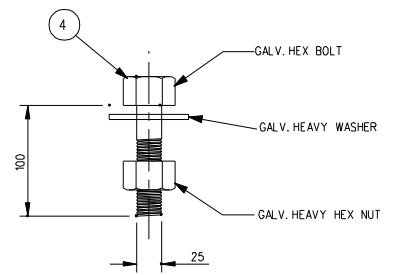


CORRIDOR ARM

TENON DETAIL
SCALE: 1:5



ARM FLANGE PLATE DETAIL
N.T.S.



FLANGE BOLT DETAIL
SCALE: 1:2

BILL OF MATERIALS

MK. NO.	QTY. REQ'D.	DESCRIPTION	SIZE	MATERIAL (G40.21-M-350W U/N)	REMARKS	LINE NO.
6.7 m LONG ARM EXTENSION-CORRIDOR / SIGNAL ARM						
1	1	OCTAGONAL SECTION SHAFT	165 A/F-100 A/F x 6.350		CORR. ARM 5763 LONG SIGNAL ARM 6463 LONG	2
3	1	FLANGE PLATE	25 x 265 x 265	G40.21-M-300W		3
4	4	FLANGE BOLTS	25 DIA. x 100	ASTM A325	GALV.	4
5	1	PIPE TENON	60.3 O.D. x 3.91 x 250	SCH.40 ASTM A53 GR. B	FOR SIGNAL ARM ONLY SEE DETAIL C	5
6	1	PIPE TENON	60.3 O.D. x 3.91 x 950	SCH.40 ASTM A53 GR. B	FOR CORRIDOR ARM ONLY SEE DETAIL C	6
7	1	NIPPLE	48.3 O.D. x 3.65 x 100	SCH.40 ASTM A53 GR. B		7
8	1	TENON PLATE	12 x 150 DIA.			8
9	1	BACK-UP STRIP PLATE	6 x 40			9
8.2 m LONG ARM EXTENSION-CORRIDOR / SIGNAL ARM						
2	1	OCTAGONAL SECTION SHAFT	165 A/F-100 A/F x 6.350		CORR. ARM 7263 LONG SIGNAL ARM 7963 LONG	12
3	1	FLANGE PLATE	25 x 265 x 265	G40.21-M-300W		13
4	4	FLANGE BOLTS	25 DIA. x 100	ASTM A325	GALV.	14
5	1	PIPE TENON	60.3 O.D. x 3.91 x 250	SCH.40 ASTM A53 GR. B	FOR SIGNAL ARM ONLY SEE DETAIL C	15
6	1	PIPE TENON	60.3 O.D. x 3.91 x 950	SCH.40 ASTM A53 GR. B	FOR CORRIDOR ARM ONLY SEE DETAIL C	16
7	1	NIPPLE	48.3 O.D. x 3.65 x 100	SCH.40 ASTM A53 GR. B		17
8	1	TENON PLATE	12 x 150 DIA.			18
9	1	BACK-UP STRIP PLATE	6 x 40			19
						20
						21

- NOTES:
- ALL MATERIALS, EXCEPT STAINLESS STEEL ITEMS, SHALL BE HOT DIP GALVANIZED IN ACCORDANCE WITH C.S.A. STANDARD G164 WITH NET RETENTION OF 600 g/m.
 - STAMP FLANGE PLATES WITH 'STOCK CODE NUMBER'.
 - SHIP WITH BOLTS C/W NUTS AND WASHERS IN FLANGE.

DATE	BY	DESCRIPTION

TRAFFIC SIGNAL AND PEDESTRIAN
CORRIDOR STRUCTURES

TYPE 9 HEAVY SERIES DAVITS
EXTENSION ARMS
6.7 m AND 8.2 m LONG



PROJECT ENGINEER	BY: S.S.R.	DATE
DESIGN	CHECKED: S.S.R.	DIRECTOR OF TRAFFIC ENGINEERING
DETAILS	BY: N.B.G.	SCALE: AS SHOWN
	TRACED: N.B.G.	COMPONENT NO. E-016 Q
	CHECKED: S.S.R.	SHEET No. S14