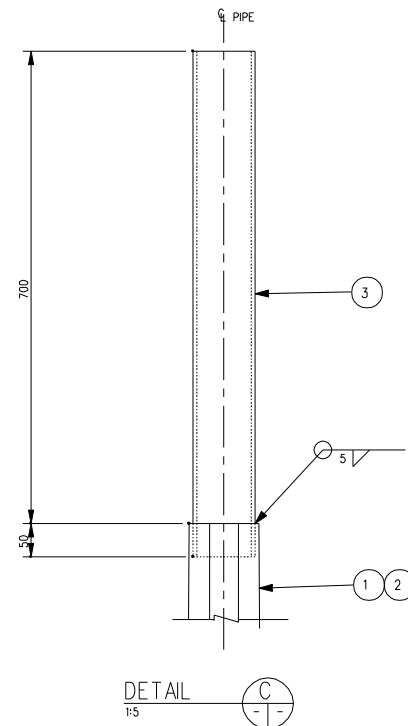
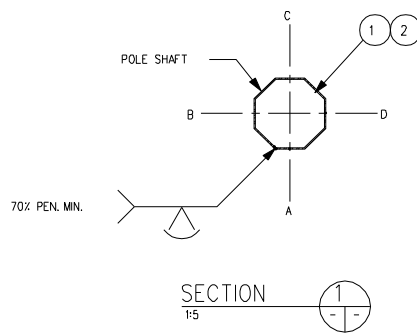


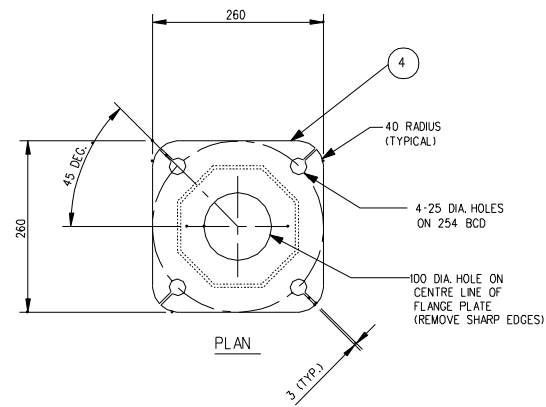
EXTENSION SHAFT ELEVATION
1:30



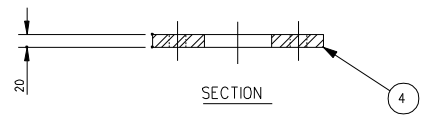
DETAIL
1:5



SECTION
1:5



PLAN



SECTION

SHAFT FLANGE PLATE DETAIL
1:5

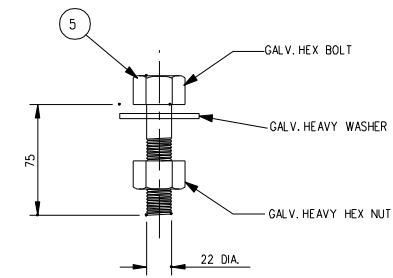
STOCK CODE	DESCRIPTION	DIMENSION 'A'
17900	LUMNAIRE EXT. SHAFT 5.4m	5400
17901	LUMNAIRE EXT. SHAFT 8.4m	8400

BILL OF MATERIALS

MK. NO.	QTY. REQ'D.	DESCRIPTION	SIZE	MATERIAL (G40.21-M-300W U/N)	REMARKS	LINE NO.
		5.4 m LUMNAIRE EXTENSION SHAFT				1
1	1	OCTAGONAL SECTION SHAFT	180 A/F-110 A/F x 4.763 x 4680			2
3	1	TENON PIPE	101.6 O.D. x 5.74 x 750	SCH. 40, ASTM A53 GR. B		3
4	1	FLANGE PLATE	20 x 260 x 260			4
5	4	FLANGE BOLTS	22 DIA x 75	ASTM A325	GALV.	5
						6
						7
						8
		8.4 m LUMNAIRE EXTENSION SHAFT				9
2	1	OCTAGONAL SECTION SHAFT	180 A/F-110 A/F x 4.763 x 7680			10
3	1	TENON PIPE	101.6 O.D. x 5.74 x 750	SCH. 40, ASTM A53 GR. B		11
4	1	FLANGE PLATE	20 x 260 x 260			12
5	4	FLANGE BOLTS	22 DIA x 75	ASTM A325	GALV.	13
						14
						15
						16
						17
						18
						19
						20

NOTES:-

- ALL MATERIALS, EXCEPT STAINLESS STEEL ITEMS, SHALL BE HOT DIP GALVANIZED IN ACCORDANCE WITH C.S.A. STANDARD G164 WITH NET RETENTION OF 600 g/m².
- STAMP FLANGE PLATES WITH 'STOCK CODE NUMBER'.
- SHIP WITH BOLTS C/W NUTS AND WASHERS IN FLANGE.



FLANGE BOLT DETAIL
1:2

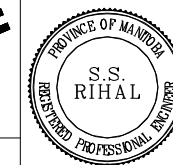
REVISIONS		
DATE	BY	DESCRIPTION

TRAFFIC SIGNAL AND PEDESTRIAN CORRIDOR STRUCTURES

EXTENSION SHAFTS
5.4 m AND 8.4 m LUMNAIRE



CONSULTANT PROJECT NO.
98-5973-02



Manitoba Highways and Transportation
Traffic Engineering Branch

PROJECT ENGINEER:
DESIGN BY: S.S.R.
CHECKED: S.S.R.
DETAILS BY: N.B.G.
TRACED: N.B.G.
CHECKED: S.S.R.

ACCEPTED BY:
TRAFFIC OPERATIONS ENGINEER DATE
APPROVED BY:
DIRECTOR OF TRAFFIC ENGINEERING DATE
SCALE: AS SHOWN COMPONENT NO. E-016 L
SHEET No. S18