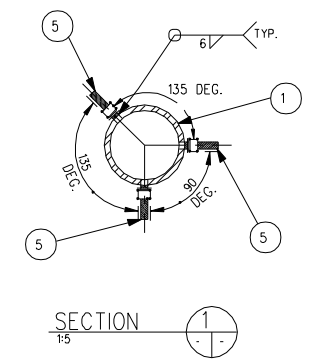
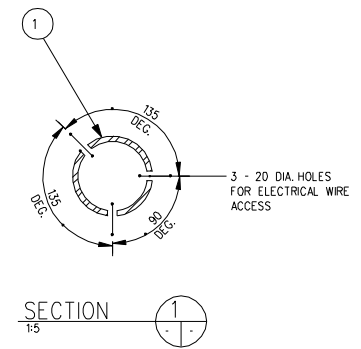


LUMINAIRE ADAPTOR
1:5



SECTION 1-1
1:5



SECTION 1-1
1:5

BILL OF MATERIALS

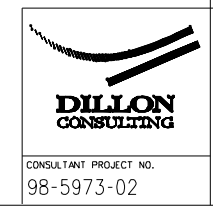
MK. NO.	QTY. REQ'D.	DESCRIPTION	SIZE	MATERIAL (G40.21-M-300W U/N)	REMARKS	LINE NO.
1	1	LUMINAIRE ADAPTOR	119 O.D. x 6.35 x 900			1
2	1	CAP	132 O.D. x 4.763 x 38			2
3	1	CAP COVER PLATE	6 x 138 DIA.			3
4	2	BOLT	6 DIA. x 15	TYPE 316 S/S	C/W LOCKNUTS & LOCKWASHER EACH BOLT	4
5	6	THREADED ROD	16 DIA. x 50	G40.21-M-300W	C/W 1-NUT & 1-LOCKWASHER EACH ROD	5
						6
						7
						8
						9
						10
						11
						12
						13
						14
						15
						16
						17
						18
						19
						20

NOTE:
1. ALL MATERIALS, EXCEPT STAINLESS STEEL ITEMS, SHALL BE HOT DIP GALVANIZED IN ACCORDANCE WITH C.S.A. STANDARD G164 WITH NET RETENTION OF 600 g/m. 2

REVISIONS		
DATE	BY	DESCRIPTION

TRAFFIC SIGNAL AND PEDESTRIAN CORRIDOR STRUCTURES

HYDRO LUMINAIRE ADAPTOR



CONSULTANT PROJECT NO.
98-5973-02

PROJECT ENGINEER	BY: S.S.R.	ACCEPTED BY:	DATE
DESIGN	CHECKED: S.S.R.	TRAFFIC OPERATIONS ENGINEER	DATE
DETAILS	BY: N.B.G.	APPROVED BY:	DATE
	TRACED: N.B.G.	DIRECTOR OF TRAFFIC ENGINEERING	DATE
	CHECKED: S.S.R.	SCALE: AS SHOWN	COMPONENT NO. E-016_T
			SHEET No. S19