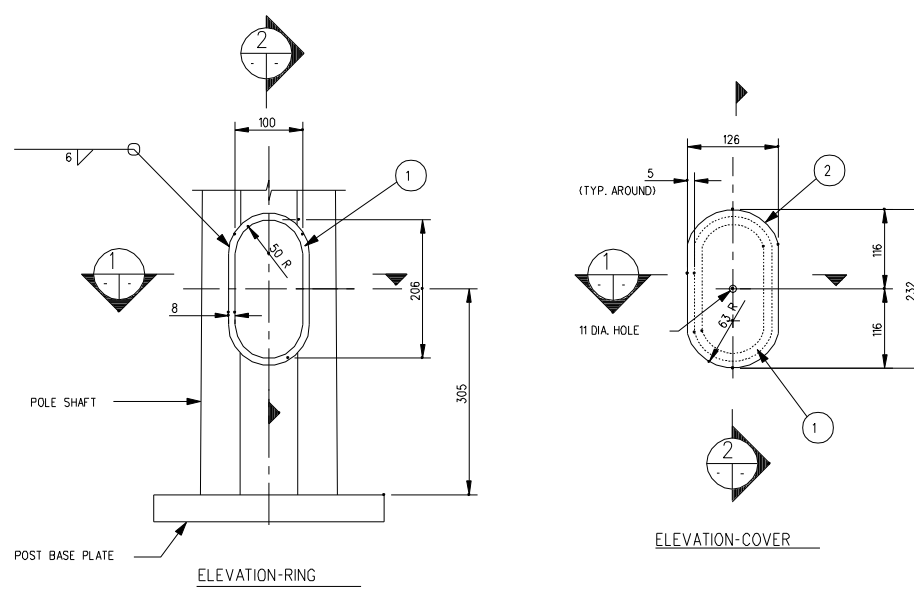
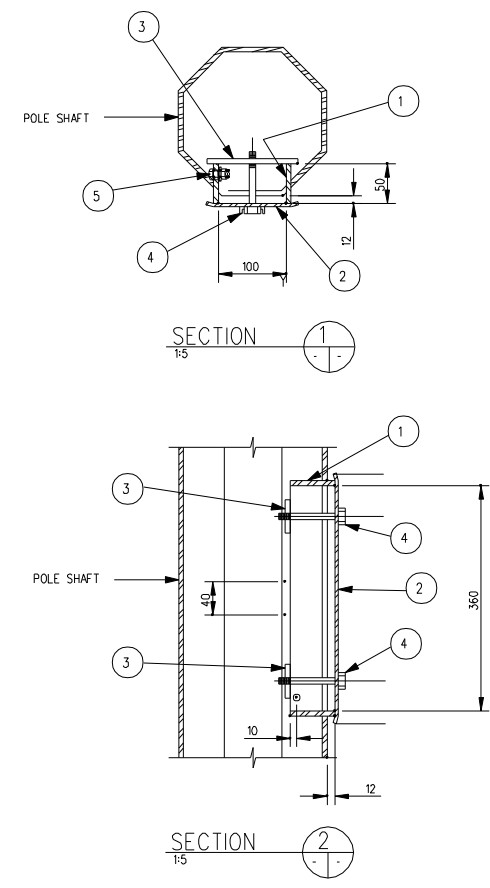
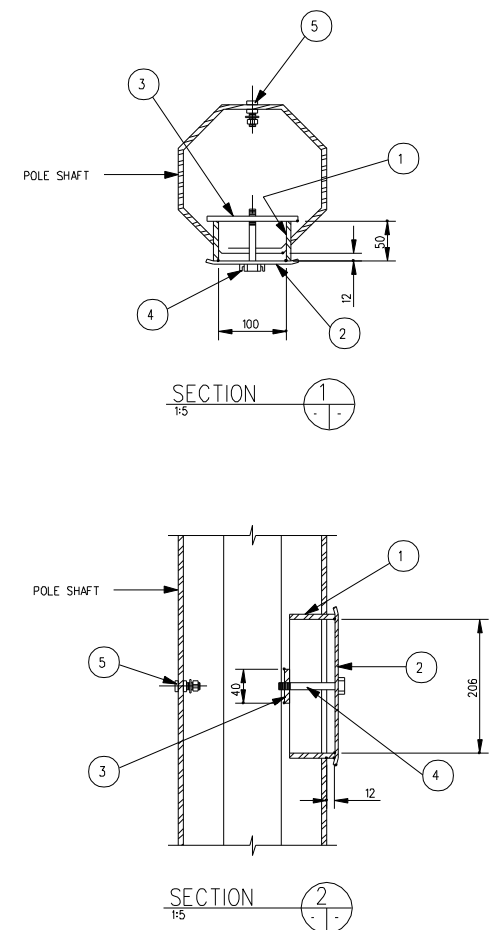


ACCESS PANEL-MARK AP1  
1:5



HANDHOLE-MARK H1  
1:5



BILL OF MATERIALS

MK. NO.	QTY. REQ'D.	DESCRIPTION	SIZE	MATERIAL (G40.21-M-300W U/N)	REMARKS	LINE NO.
ACCESS PANEL MARK AP1						
1	1	RING PLATE	8 x 50 x 855			1
2	1	COVER PLATE	11 GA. x 126 x 386			2
3	2	LOCKING FLAT BAR	6 x 40 x 150		C/W 8 DIA. PUNCHED 10 N.C TAPPED AT THE CENTER OF PLATE	3
4	2	HEX BOLT	10 DIA. x 75	TYPE 316 S/S	C/W CUP WASHER	4
5	1	GROUND STUD ASSEMBLY	10 DIA. x 40		C/W 2-10 DIA. HEX NUT, 2-TERMINAL WASHER & 1-LOCKWASHER	5
HANDHOLE MARK H1						
1	1	RING PLATE	8 x 50 x 545			6
2	1	COVER PLATE	11 GA. x 126 x 232			7
3	1	LOCKING FLAT BAR	6 x 40 x 150		C/W 8 DIA. PUNCHED 10 N.C TAPPED AT THE CENTER OF PLATE	8
4	1	HEX BOLT	10 DIA. x 75	TYPE 316 S/S	C/W CUP WASHER	9
5	1	GROUND STUD ASSEMBLY	10 DIA. x 40		C/W 2-10 DIA. HEX NUT, 2-TERMINAL WASHER & 1-LOCKWASHER	10
						11
						12
						13
						14
						15
						16
						17
						18
						19
						20

NOTE:  
1. ALL MATERIALS, EXCEPT STAINLESS STEEL ITEMS, SHALL BE HOT DIP GALVANIZED IN ACCORDANCE WITH C.S.A STANDARD G164 WITH NET RETENTION OF 600 g/m. 2

DATE	BY	DESCRIPTION

TRAFFIC SIGNAL AND PEDESTRIAN CORRIDOR STRUCTURES  
  
DETAILS  
ACCESS PANEL (AP1)  
HANDHOLE (H1)



Manitoba Highways and Transportation  
Traffic Engineering Branch

PROJECT ENGINEER  
DESIGN BY: S.S.R.  
CHECKED: S.S.R.  
DETAILS BY: N.B.G.  
TRACED: N.B.G.  
CHECKED: S.S.R.

ACCEPTED BY:  
TRAFFIC OPERATIONS ENGINEER \_\_\_\_\_ DATE \_\_\_\_\_  
APPROVED BY:  
DIRECTOR OF TRAFFIC ENGINEERING \_\_\_\_\_ DATE \_\_\_\_\_

SCALE: AS SHOWN  
COMPONENT NO. E-016 A & B  
SHEET No. S20