

BILL OF MATERIALS

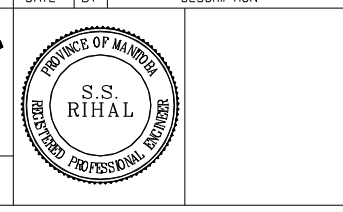
MK. NO.	QTY. REQ'D.	DESCRIPTION	SIZE	MATERIAL (G40.21-M-300W U/N)	REMARKS	LINE NO.
		DAVIT STUB MK.E1				1
1	1	OCTAGONAL SECTION SHAFT	220 A/F-180 A/F x 6.350 x 3348			2
2	1	BASE PLATE	32 x 300 x 300			3
3	1	BACK-UP STRIP PLATE	6 x 40 x 688			4
4	1	STUB FLANGE PLATE	20 x 260 x 260			5
5	4	STUB FLANGE BOLTS	22 DIA. x 75	A 325	SEE FLANGE BOLT DETAIL D	6
		DOUBLE DAVIT EXTENSION ARM-MK.E2				7
4	1	STUB FLANGE PLATE	20 x 260 x 260			8
6	1	OCTAGONAL SECTION SHAFT	180 A/F-120 A/F x 6.350 x 3975			9
7	1	OCTAGONAL SECTION SHAFT	180 A/F-120 A/F x 6.35 x 3695			10
8	2	ARM FLANGE PLATE	20 x 170 x 170			11
9	8	ARM FLANGE BOLTS	16 DIA. x 75	A 325	SEE FLANGE BOLT DETAIL D	12
		EXTENSION ARM-MK.E3				13
8	2	ARM FLANGE PLATE	20 x 170 x 170			14
10	2	OCTAGONAL SECTION SHAFT	120 A/F-75 A/F x 4.763 x 1168			15
11	2	TENON PIPE	60.3 O.D. x 3.91	SCH.40, ASTM A53 GR. B		16
						17
						18
AP1	1	ACCESS PANEL			SEE SHEET NO. S20	19
						20
						21
AB2	4	ANCHOR BOLT ASSEMBLY	32 DIA. x 1650	G40.21-M-300W	SUPPLIED BY OWNER SEE ANCHOR BOLT DWGS.	22
						23

- NOTES:
- ALL MATERIALS, EXCEPT STAINLESS STEEL ITEMS, SHALL BE HOT DIP GALVANIZED IN ACCORDANCE WITH C.S.A. STANDARD G164 WITH NET RETENTION OF 600 g/m.²
 - STAMP BASE AND FLANGE PLATES WITH 'STOCK CODE NUMBER'.
 - SHIP WITH HANDHOLE COVERS INSTALLED AND BOLTS C/W NUTS AND WASHERS IN FLANGES.
 - STRUCTURE INSTALLED ON SAFE-T-BASE (BREAKAWAY BASE) WITH 4-25 DIA. GR. B7 BOLTS ON 292 BCD.

DATE	BY	DESCRIPTION

PEDESTRIAN CORRIDOR STRUCTURE

TYPE 5-INTERMEDIATE SERIES DOUBLE DAVIT DAVIT STUB, DOUBLE DAVIT EXTENSION ARM, AND EXTENSION ARM



ACCEPTED BY: _____ DATE: _____

TRAFFIC OPERATIONS ENGINEER

APPROVED BY: _____ DATE: _____

DIRECTOR OF TRAFFIC ENGINEERING

PROJECT ENGINEER: _____

DESIGN BY: S.S.R. CHECKED: S.S.R.

DETAILS BY: N.B.G. TRACED: N.B.G. CHECKED: S.S.R.

SCALE: AS SHOWN COMPONENT NO. E-016_Y SHEET No. S6