

BILL OF MATERIALS

MK. NO.	QTY. REQ'D.	DESCRIPTION	SIZE	MATERIAL (G40.21-M-300W U/N)	REMARKS	LINE NO.
1	1	OCTAGONAL SECTION SHAFT	260 A/F-165 A/F x 7.938 x 7805			1
2	1	OCTAGONAL SECTION SHAFT	180 A/F x 7.938 x 1980			2
3	1	BASE PLATE	45 x 380 x 380			3
4	1	BACK-UP STRIP PLATE	6 x 40 x 760			4
5	1	LUMINAIRE FLANGE PLATE	20 x 260 x 260			5
6	1	ARM FLANGE PLATE	20 x 230 x 230			6
						7
AP1	1	ACCESS PANEL			SEE SHEET NO. S20	8
H1	2	HANDHOLE			SEE SHEET NO. S20	9
						10
						11
AB2	4	ANCHOR BOLT ASSEMBLY	32 DIA. x 1650	G40.1-M-300W	SUPPLIED BY OWNER SEE ANCHOR BOLT DWGS.	12
						13
						14
						15

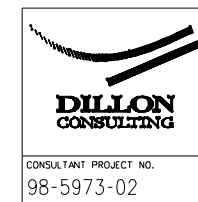
- NOTES:
- ALL MATERIALS, EXCEPT STAINLESS STEEL ITEMS, SHALL BE HOT DIP GALVANIZED IN ACCORDANCE WITH C.S.A. STANDARD G164 WITH NET RETENTION OF 600 g/m.
  - STAMP BASE AND FLANGE PLATES WITH 'STOCK CODE NUMBER'.
  - SHIP WITH HANDHOLE COVERS INSTALLED.
  - RELATED COMPONENTS AND DRAWINGS :
    - EXTENSION ARM (E-016 J) - SHEET NO. S9
    - STRAIGHT STUB EXTENSION (E-016 D) - SHEET NO. S21
    - LUMINAIRE DAVIT ARM (E-016 E) - SHEET NO. S17

DATE	BY	DESCRIPTION

TRAFFIC SIGNAL AND PEDESTRIAN CORRIDOR STRUCTURES

TYPE 4-MEDIUM SERIES COMBINATION DAVIT STANDARD

STUB-MEDIUM SERIES COMBINATION DAVIT



Manitoba Highways and Transportation  
Traffic Engineering Branch

PROJECT ENGINEER

DESIGN BY: S.S.R.  
CHECKED: S.S.R.

DETAILS BY: N.B.G.  
TRACED: N.B.G.  
CHECKED: S.S.R.

ACCEPTED BY: \_\_\_\_\_ DATE \_\_\_\_\_

TRAFFIC OPERATIONS ENGINEER

APPROVED BY: \_\_\_\_\_ DATE \_\_\_\_\_

DIRECTOR OF TRAFFIC ENGINEERING

SCALE: AS SHOWN

COMPONENT NO. E-016 K

SHEET No. S8