



Angling continues to be an important part of Manitoba's outdoor heritage, both from a recreational and economic perspective. This was confirmed by the results of a recent, five year national survey on recreational angling which showed that the number of Manitoba anglers increased 14% from the previous survey, in contrast to an overall decline across the nation.

There were significant increases in other areas as well. For example, the number of fish caught increased from nine million to 14 million and Manitoba anglers continued to lead all other provinces in the percentage of fish released. Activity by anglers also increased as the number of days fished increased from 2.2 million days to 2.7 million days.

From an economic perspective, Manitobans and visiting anglers spent \$120 million on items directly related to angling, such as food, lodging, travel and equipment. Of these expenditures, one-half was spent by visiting anglers, illustrating the importance of tourism to Manitoba.

Manitoba was the only province in this survey to show significant improvements in angling participation and I would like to take this opportunity to thank Manitoba anglers, angling related organizations and the angling industry for working together with government in making this possible.

Our department will continue to promote angling as a family activity that can be enjoyed by Manitobans of all ages and it is committed to continue working with those who have maintained Manitoba's position as a leader in recreational fisheries management.

Hon. Steve Ashton  
Minister  
Manitoba Conservation

## WHAT'S NEW FOR 2003

The regulations in this book are in effect on April 1, 2003. Changes shown in italics are intended to simplify regulations by reducing the number and complexity of regulations.

- ***The minimum size limit restriction for walleye on Irwin Lake (Southern Division) has been removed. The lake is being managed as a pike fishery and walleye are no longer being stocked.***
- ***Dip netting for whitefish on a year round basis is now allowed.***
- ***Chocolate Lake (Northwest Division) has been removed from the stocking list. This lake is no longer being stocked due to the presence of pike in the lake.***
- **At the request of the Nelson House First Nation, the HQM regulation now applies to Leftrook Lake (North Central Division).**
- **A creel limit of 25 perch now applies to the Southern Division. This limit of 25 does not apply to lakes Winnipeg, Manitoba and Winnipegosis.**
- **At the request of the Little Athapap Cottage Owners Association the walleye limit on Lake Athapapuskow is reduced to four.**
- ***Silver Beach Lake (Southern Division) has been removed from the stocking list. This lake is now being managed as a walleye/pike fishery.***
- **For Patterson and West Goose lakes, the stocked trout limit is one of any size, the use of artificial lures only is permitted and only electric motors may be used to power any craft.**
- **The walleye/sauger limit is four and only one walleye per year over 70 cm (28 in) may be harvested on tributaries to the Red River between Lockport Dam and Lake Winnipeg.**
- **Angling licence fees are currently under review.**

## Contents

What's New for 2003.....	2
Possible Changes for 2004 .....	2
Licences.....	3
General Regulations.....	3
Fishing Methods.....	3
Barbless Hooks .....	3
Angling and Ice Fishing .....	3
Ice Fishing Shelters.....	3
Fish Remains.....	3
Bait .....	3
Dip Netting, Seining, and Minnow Trapping .....	4
Spear Fishing .....	4
Bow Fishing.....	4
Holding and Releasing Fish .....	4
Competitive Fishing Events .....	4
Buying and Selling Fish .....	4
Fishways (Fish Ladders) .....	4
Handling, Transport and Storage .....	4
Border Waters .....	4
Limits .....	5
Fishing Divisions Map .....	8
<b>Southern Division Regulations .....</b>	<b>8</b>
Manitoba Conservation Offices.....	10
<b>Northwest Division Regulations.....</b>	<b>13</b>
<b>North Central Division Regulations.....</b>	<b>14</b>
<b>Northeast Division Regulations .....</b>	<b>14</b>
Status Indian Information .....	15
Master Angler Application.....	17

**Note: New regulations are in bold type.** This publication is available on audiotape on request.

## POSSIBLE CHANGES FOR 2004

Proposed changes shown in italics are intended to simplify regulations by reducing the number and complexity of regulations. By listing these proposed changes a year in advance, anglers will have an opportunity to express their opinions regarding these changes.

- *The general opening of the 2004 angling season will be May 15 in the south and May 22 in the north.*
- *Apply the High Quality Management (HQM) regulation to all of the Northwest Division. Creel limits of four walleye (none over 55 cm or 22 in), four pike (none over 75 cm or 30 in) and one lake trout (none over 65 cm or 26 in) will apply. Existing HQM designated lakes will no longer be listed and all special creel limits will be reviewed with the intention of having standard creel limits throughout the Division.*
- *Extend the spring closure for angling on Morgan Lake, Woosey Lake and Woosey Creek between Morgan Lake and Woosey Lake from May 31 to July 15.*
- *Apply the HQM regulation to Goldsand Lake in the North Central Division and Dow Lake in the Northwest Division. All species over the maximum size limits will have to be released.*
- *The date for removal of ice fishing shacks on the Red River will be changed from March 15 to the Sunday that falls on or between March 9 and March 15.*
- *On Burntwood Lake (Northwest Division), the walleye and pike creel limits will be reduced to four. All walleye over 55 cm (22 in) and all pike over 75 cm (30 in) will have to be released.*
- *At the request of some lodge operators, the use of single, barbless hooks only will be required on some remote lakes.*

## LICENCES\*

Fees (includes GST)

<b>Resident Senior</b> (Manitobans 65 and over)	<b>Conservation</b> \$6.00	<b>Regular</b> See resident regular licence
<b>Resident</b> (Manitobans age 16-64 and other Canadians aged 16 and over)	\$9.00	\$15.00
<b>Nonresident</b> (age 16 and over)	\$22.00	\$40.00

\* Angling licence fees are currently under review.

A "Manitoba Resident Seniors Conservation Licence" is for Manitoba seniors (65 and over) who have permanently resided in Manitoba for at least 6 months and is valid for a conservation limit of fish. Manitoba seniors wanting a regular limit of fish must buy a regular resident licence.

Licences are valid from May 1, 2003 until and including April 30, 2004, but are not valid until they are signed. The time of licence validity has no impact on season dates. See page 8 for general season dates. Licences are not transferrable or refundable. If a licence is lost another must be purchased.

All persons, except those exempted below, who engage in angling, dip netting, seining, minnow trapping, spear fishing, and bow fishing, must have a Manitoba Angling Licence on their person.

### LICENCE EXEMPTIONS

The following people may angle without a licence:

- Any person under the age of 16 who has permanently resided in Canada for at least six months.
- Any nonresident under the age of 16. This person must fish with a licence holder, or someone exempt from holding a licence, and their catch must be applied to the limit of that person. A nonresident under 16 who wishes to have a separate limit must buy a licence.

Except for nonresident youths, people who are exempt from holding a licence have all the rights and privileges of those holding a Regular Licence, including their own regular limit of fish. All other regulations apply. Proof of age is required when checked by an Officer.

### STATUS INDIANS

Status Indians do not require an angling licence. They are exempt from angling regulations including seasons, limits, and gear restrictions when fishing for food. Proof of status is required when checked by a Natural Resource Officer or RCMP Officer (see page 15).

### RESIDENT OR NONRESIDENT?

A resident is a person who has lived in Canada for the immediate past six months. Any person who has not lived in Canada for the past six months is a nonresident and, if over 16 years of age, must purchase a nonresident licence.

### NATIONAL PARKS

A Manitoba Angling Licence is not valid for fishing in National Parks. Contact Parks Canada for details on fishing licences and regulations in National Parks.

### CONSERVATION LICENCE

A Conservation Licence entitles the holder to the same rights as a Regular Licence holder except for reduced limits for some species: 4 walleye/sauger, 4 pike, 1 lake trout, 1 channel catfish, 2 smallmouth bass/largemouth bass, and 2 stocked trout. Limits for other species remain the same.

### LICENCE OUTLETS

Licences are sold at most hardware and sporting goods stores, fishing centres, and lodges. Not all vendors carry nonresident licences and many do not have licences during winter.

Licences may also be bought by mail. Send a cheque or money order for the appropriate licence fee (payable to Minister of Finance) to The Cashier, Manitoba Conservation, 200 Saulteaux Crescent, Winnipeg, Manitoba, R3J 3W3. Include first name, surname, and initials; full address; day, month, and year of birth; and sex of licensee.

## GENERAL REGULATIONS

Recreational fishing in Manitoba is governed by regulations made under The Provincial Fisheries Act and the Fisheries Act of Canada. **This guide provides a summary of those regulations. The actual regulations in force, not necessarily those in this guide, shall apply.** Regulations other than those under the Fisheries Act may also apply while fishing, e.g. regarding the use of boats, motors, vehicles, etc. For more detail on the regulations check with your local Manitoba Conservation Office (see page 10).

### Note:

- **Open fires** are prohibited in Manitoba from April 1 to November 15, unless the fire is in an approved fire pit. If approved fire pits are not available, shore lunches and other meals must be cooked over a camp stove.
- **Litter regulations** (under the Environment Act) are enforced by Manitoba Conservation.
- **Open liquor** (including beer) is prohibited in boats and vehicles. Manitoba Conservation enforces regulations under the Liquor Control Act.

### FISHING METHODS

Recreational fishing includes angling, spear fishing, bow fishing, dip netting, seining, and minnow trapping. Techniques are those generally accepted by anglers. Under no circumstances may explosives, firearms, clubs, snagging, snaring, poisons, etc. be used.

### BARBLESS HOOKS

Anglers must use barbless hooks. A barbless hook is a hook with no barbs or barbs that have been compressed to be in complete contact with the shaft of the hook. Barbless hooks may have barbs on the shank for holding bait. When you are fishing, the hooks attached to all your lines, whether in use or not, must be barbless. Barbed hooks may be kept in the tackle box.

### ANGLING AND ICE FISHING

Angling is fishing with a hook and line. The use of any unusual or special gimmicks is often illegal and best avoided. Hooks or lures must not be spring-loaded.

Anglers may use only one rod and line, except during ice fishing when two may be used. Only two hooks or lures may be used per line. Anglers must, when fishing in open water, keep their line in sight at all times and when ice fishing stay within 50 m of the line.

### ICE FISHING SHELTERS

All ice fishing shelters must clearly display the owner's name and address. Ice fishing shelters must be removed by March 15 on the Red River, by March 31 in the rest of the Southern Division and by April 15 in the Northwest, North Central and Northeast Divisions, or when requested to do so by a Natural Resource Officer due to unsafe ice conditions. Shelters must be stored or disposed of away from the shore and on private property.

### FISH REMAINS

Fish cleaning remains must not be left on beaches or shorelines. At sites such as boat launches, campgrounds, lodges, etc., fish remains must be placed in containers provided for that purpose.

### BAIT

Night crawlers and earthworms may be used as bait in all Fishing Divisions in Manitoba. They may be imported to Manitoba in a sterile medium such as paper mulch, but not in soil.

Live crayfish, leeches, frogs and salamanders (water dogs) may also be used as bait in all Divisions. However, they may not be imported.

Offal (fish cleaning remains) may be used as bait in all Divisions.

Frozen or preserved bait fish may be imported and used in all Divisions.

Live bait fish may not be imported and may not be used or possessed in the Northwest, North Central and Northeast Divisions, including the Bloodvein and Gammon rivers. Live bait fish may be used and possessed in the Southern Division, except in the following areas:

- Stocked Trout Waters
- Duck Mountain Provincial Forest and Park
- Turtle Mountain Provincial Park
- Porcupine Provincial Forest
- Whiteshell Provincial Park
- Winnipeg River (from Seven Sisters Dam to the Ontario border)

Those anglers in possession of purchased live bait fish must have a Live Bait Fish Transfer and Use Receipt issued by the dealer. Anglers may catch their own bait fish, but must kill them before transporting them away from the water where they were caught. Bait fish includes only:

chub	trout-perch	tullibee
shiner	stickleback	sculpin
mudminnow	fathead minnow	darler
sucker	bluntnose minnow	dace

No angler may have in possession more than 4 litres of bait fish of which no more than 15 dozen can be live bait fish (excluding suckers and tullibee, which have no limit).

Yellow perch, goldeye, and mooneye, that have been caught by angling may also be used as bait. Anglers may only possess a legal limit of these species. Carp, goldfish, and rainbow smelt, except for purchased frozen smelt, may not be used as bait.

### DIP NETTING, SEINING, AND MINNOW TRAPPING

An angling licence is required while dip netting, seining, or minnow trapping. In most waters these activities are allowed at any time of year. Check for closures on specific waters in the divisional sections of this guide.

Species that may be kept include suckers, carp, burbot, bullheads, tullibee, chub, shiners, darters, dace, fathead minnow, bluntnose minnow, mudminnow, trout-perch, stickleback, sculpin and **whitefish**. All other species must be released immediately. Live fish may not be transported away from the waters where they were caught. Fish must be dead before transporting. General creel limits apply.

Dip nets may not be larger than 1 square metre. Seine nets may not be larger than 3 square metres. Minnow traps must not be larger than 65 cm long and 35 cm in diameter, and must have the fisherman's name and address marked on them.

### SPEAR FISHING

Spear fishing is the taking of fish with a handheld spear or spear gun (pneumatic or rubber band powered) while swimming. Spear fishing is allowed in all areas of the province open to angling. For safety reasons do not spear fish near areas used for swimming, boat launching, or docking.

Angling seasons, limits and licence requirements apply. Fishermen may possess only one limit of fish, whether taken by spear fishing or angling.

You may not spear fish for sturgeon, largemouth bass, smallmouth bass, muskellunge, Arctic grayling, Arctic char, brown trout, rainbow trout, brook trout, splake or other trout hybrids. Only face mask, flippers and snorkel may be used to take the following species (i.e. no scuba equipment): walleye, sauger, pike, channel catfish, crappies, mooneye, goldeye, lake trout and whitefish.

Scuba or snorkelling equipment may be used for species other than those listed above. For safety courses and information please contact your local Scuba dealer.

### BOW FISHING

Bow fishing (the shooting of fish with archery equipment) is permitted for carp and suckers only. Angling seasons and licence requirements apply. A fish arrow and at least 20-kg test line must be used. Using a crossbow to fish is illegal.

### HOLDING AND RELEASING FISH

Fish being legally retained may be held live only while you are actively fishing, and they must be held within 25 m of you.

If you release fish, they must be released unharmed into the water from which they were taken. They must not be tagged or marked in any way, unless authorized by a permit.

### COMPETITIVE FISHING EVENTS

Persons and organizations holding fishing derbies or tournaments that have more than 25 participants must obtain a free Competitive Fishing Event Licence four weeks prior to the event. Licences are available from Fisheries Branch, 200 Saultheaux Crescent, Winnipeg, Manitoba, R3J 3W3 - (204) 945-6640 or contact a Manitoba Conservation Office in your area (see page 10).

All participants must have a Manitoba Angling Licence unless exempt (e.g. children or Status Indians; see page 3). All walleye, sauger, trout, smallmouth bass, and channel catfish entered must be released. Further restrictions may be imposed. All fish caught and retained for use in a competitive fishing event are considered to be in possession and part of the angler's daily limit.

### BUYING AND SELLING FISH

Fish harvested while angling may not be bought, sold, traded or bartered. If you buy fish from a commercial fisherman or retailer be sure to get a sales receipt at the time of sale. You must carry this receipt with the fish as proof of purchase.

### FISHWAYS (FISH LADDERS)

Fishways are used to assist fish passage through, over or around barriers. Please respect these structures when in use and do not disturb the fish. **Remember, it is a violation to fish (including dip netting, seining and minnow trapping) within 23 metres (25 yards) of a fishway (fish ladder).**

### HANDLING, TRANSPORT AND STORAGE OF FISH

Live fish may not be transported away from the waters where they were caught, except under the authority of a permit issued by Fisheries Branch.

Fish must not be handled, transported or disposed of in a way that will allow it to spoil.

Fish must be transported and stored so that the number, species, and size of fish can be determined. Six square centimetres (1 square inch) of skin must be left on each fillet. Fish should not be transported or stored in a solid frozen block of fillets or in a processed state such as canned.

If due to extenuating circumstances, you need to transport fish belonging to another angler, in addition to your own limit, you must obtain a Fish Transportation Loadslip from a Regional or District Conservation office (see page 10).

Persons transporting fish into Manitoba that were caught outside Manitoba should obtain physical proof of the origin of the fish before it is transported.

### BORDER WATERS

Anglers who are on or in the immediate vicinity of lakes or rivers that cross a Manitoba border may have only a Manitoba limit of fish.

Anglers may have either a Manitoba or an Ontario Angling Licence (or be exempt from holding one) to fish on all of Davidson Lake, Frances Lake, Garner Lake, High Lake, Mantario Lake, Moar Lake and Ryerson Lake, and either a Manitoba or Saskatchewan Angling Licence (or be exempt from holding one) to fish on all of Lake of the Prairies upstream from the Shellmouth Dam; only one licence is required.

Anglers who have an Ontario Angling Licence may fish on the Manitoba portion of Artery Lake without a Manitoba Angling Licence.

### PLEASE DO NOT LITTER

Discarding bait containers, monofilament line and other types of litter along shorelines, on the ice or in the water is illegal and shows disrespect for the environment. Keep our lakes and rivers clean. Do not litter and when possible, show your concern for the environment by cleaning up after others. The fine for littering in Manitoba is \$96.

## LIMITS AND POSSESSION

Fish are considered to be in possession if they are not immediately released into the water from which they were taken. Possession limits are the same as daily catch limits in Manitoba. You may possess no more than one limit of each kind of fish at any time. This includes all fish you have in hand, camp, transportation, at home or for use in a competitive fishing event. The limits on this page apply to most Manitoba waters. Special limits on specific waters are listed in the individual fishing divisions (pages 8-10; 13-15).

## HIGH QUALITY MANAGEMENT LAKES

Some lakes are designated High Quality Management Waters and have limits of 4 walleye/sauger, 4 pike, 1 lake trout, and 2 small-mouth bass. These limits are designed to protect and maintain high quality fisheries so anglers can expect good catches on High Quality Management Lakes. They are listed in the following Fishing Division pages.

## NOTICE OF INDIVIDUAL REGULATIONS

The possession and size limits listed below are general, provincial regulations and apply to most Manitoba waters. However, a number of waters in Manitoba have special, individual regulations. These exceptions and/or additions to the general regulations are found in the following divisional sections on pages 8-10; 13-15.

### GENERAL LIMITS

SPECIES	LIMIT	
	Regular Licence	Conservation Licence
<b>Arctic Char</b> in the Northeast Division	8	8
<b>Arctic Grayling</b> - only one may exceed 40 cm (16 in)	3	3
<b>Black Crappie</b>	6	6
<b>Brook Trout</b> (except stocked trout waters)		
- none may exceed 45 cm (18 in)	1	1
<b>Channel Catfish</b> - none may exceed 60 cm (24 in)	4	1
<b>Goldeye and Mooneye</b> (either or combined)	10	10
<b>Lake Trout</b> - only one may exceed 65 cm (26 in)	2	1
<b>Muskellunge</b>	0	0
<b>Northern Pike (Jackfish)</b> - only one may exceed 75 cm (30 in)	6	4
<b>Rock Bass</b>	6	6
<b>Smallmouth and Largemouth Bass</b> (either or combined)		
- only one may exceed 40 cm (16 in)	4	2
:in the Northwest Division	0	0
<b>Stocked Brook, Brown, and Rainbow Trout; Splake and other trout hybrids; and Arctic Char</b> (any species or combination)		
- only one may exceed 45 cm (18 in)	3	2
<b>Sturgeon</b>	0	0
<b>Walleye (Pickerel) and Sauger</b> (either or combined)		
- only one may exceed 55 cm (22 in)	6	4
<b>White Bass</b>	25	25
<b>Whitefish</b>	25	25
<b>Yellow Perch (Southern Division - except lakes Winnipeg, Manitoba and Winnipegosis)</b>	25	25
:all other divisions	no limit	no limit
<b>All Other Species</b>	no limit	no limit

## MANITOBA FISHERIES ENHANCEMENT INITIATIVE - 10 YEARS STRONG

The Fisheries Enhancement Fund (FEI) was established in 1993 to support projects that protect and improve fish populations and their habitats. The original idea for a fund was thought of by individuals who enjoy Manitoba's abundant fisheries resource yet were concerned about maintaining and enhancing the resource for generations to come. To date, over 230 fisheries projects have been completed due to the support and dedication of groups and individuals interested in protecting and improving Manitoba fisheries.

This year, John Gaudes' acrylic painting entitled "The Early Bird Gets the Worm" has the prestigious honour of being the 10th painting selected through the annual fish stamp competition in support of the FEI.

For more information on the initiative or an FEI application form, please contact your local Manitoba Conservation Offices or call (204) 945-7797 (email:fish@gov.mb.ca).



## DISCARDING FISHING LINE

Improper disposal of old fishing line can be a hazard to fish, wildlife and even other anglers. Please do not discard old fishing line along shorelines or into the water. Take your used line home to be disposed of in a safe manner.



## FRONT COVER

Background: A portion of the 2003 Fisheries Enhancement Print.

Inset (left to right): Grant and Matthew Kroeker holding a Rainbow Trout.

# FISHING DIVISIONS

## SOUTHERN DIVISION REGULATIONS

**General Closure: April 1 to and including May 9. Season opens May 10** (refer to map at left for Southern Divisional boundaries).

- Barbless hooks must be used.
- Use of live bait fish is allowed in some areas (see page 3).
- On aerated lakes, if closures are necessary during critical winter periods, signs will be erected.

### STOCKED TROUT WATERS AND LAKE TROUT WATERS

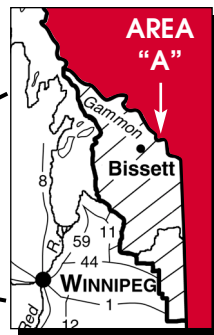
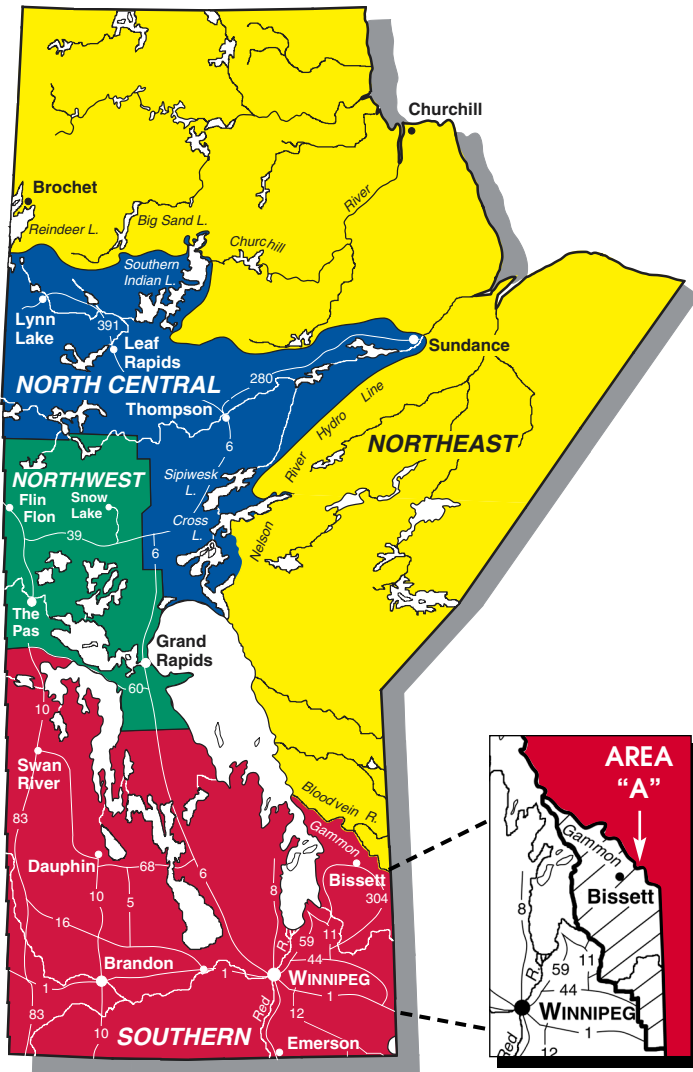
No bow fishing, dip netting, or seining is allowed on stocked trout waters. In Duck Mountain Provincial Park, and in Porcupine Provincial Forest, all trout smaller than 25 cm (10 in) must be released, except those caught in streams. Annual stocking lists are available from your local Manitoba Conservation Office (see page 10).

The trout lakes, ponds and reservoirs listed below are open to fishing all year. All pike, walleye and smallmouth bass caught in these waters from April 1 to and including May 9 must be released. The trout creeks and rivers listed below are closed to all fishing from November 1 to and including April 15.

No motors may be used on those waters marked with a ~.

No motors, except electric motors, may be used on those waters marked with a \*.

- Bagguley Lake
- Bear Lake (W of Caddy L)
- \* Beaver Lake (Duck Mountain)
- Birch River (E of Porcupine Hills)
- Bower Lake
- Bowsman River
- Brokenhead River S of GWWD rail line
- \* Camp Lake (NE of Falcon Lake)
- Childs Lake - all lake trout smaller than 25 cm (10 in) must be released.
- Cupar Creek
- Davidson Lake
- Dorothy Pond
- East Blue Lake (Duck Mountain)
- \* East Goose Lake (S of Roblin)
- East Pine Creek (E of Piney)
- Eternal Springs (upper pond)
- Forbes Lake - lake trout limit is one.
- Garland River
- Gass Lake (Porcupine Forest)
- George Lake - lake trout limit is one.
- Giant Lake
- Glad Lake (Duck Mountain)
- Gull Lake (Duck Mountain)
- Gull Pond (N of Camp Morton)
- High Lake
- \* Hunt Lake
- Kinch Creek
- Lac du Bonnet Ponds
- Laurie Lake - all lake trout smaller than 25 cm (10 in) must be released.
- Limestone Pond
- \* Little McBride Lake (NW of Boggy Ck)
- Lost Fry Lake (Augie Lake)
- \* Lyons Lake (S of W Hawk L)
- Mantario Lake
- \* McHugh Lake - trout limit is one, artificial lures only.
- McLung Creek
- Milner Ridge Pond
- Mirror Lake (Porcupine Forest)
- Nick Lake (Porcupine Forest)
- North Duck River
- O'Hanly Pond
- Olson Lake (Porcupine Forest)
- ~ One Lake



### SEASONS

- SOUTHERN DIVISION** (Red box)  
Generally closed from April 1 to and including May 9. Season opens May 10.
- NORTHWEST DIVISION** (Green box)  
Generally closed from May 1 to and including May 16. Season opens May 17.
- NORTH CENTRAL DIVISION** (Blue box)  
Generally closed from May 1 to and including May 16. Season opens May 17.
- NORTHEAST DIVISION** (Yellow box)  
Generally open to angling all year.

\* **Patterson Lake - trout limit is one, artificial lures only.**  
 \* Perch Lake (Duck Mountain) - all bass and trout must be released.  
 Pine River (Duck Mountain)  
 Quartz Pond  
 Reynolds Ponds  
 Saskatoon Pond  
 \* Shilliday Lake (Duck Mountain)  
 Snail Lake  
 South Duck River  
 \* Spear Lake (Russell Reservoir)  
 Steeprock River (Porcupine Forest)  
 Stony Creek (W of Neepawa)  
 Strawberry Pond  
 Tokaruk Lake  
 Tugby Lake  
 ~ Two Lake (S of Crowduck L)  
 \* Two Mile Lake (Duck Mountain)  
 \* Vermillion Reservoir  
 Vini Lake (Porcupine Forest)  
 Wasp Lake  
 \* **West Goose Lake - trout limit is one, artificial lures only.**  
 West Hawk Lake  
 Whiteshell River between West Hawk and Caddy lakes - all trout must be released.  
 \* William Lake (S of Boissevain)

### DIP NETTING AND SEINING RESTRICTIONS

General regulations on dip netting and seining can be found on page 4. No dip netting or seining is allowed in any stocked trout waters. In Nopiming and Whiteshell Provincial Parks, and the Rennie River near Rennie, dip netting and seining for suckers and all species other than bait fish are prohibited year round.

Some streams are closed to all fishing (including dip netting) in spring to prevent damage to spawning fish and eggs.

Check for spring closures by stream or lake name in the following section.

### EASTERN MANITOBA - SPECIAL WALLEYE REGULATION FOR AREA "A" (page 8)

All walleye between 40 cm (16 in) and 70 cm (28 in) must be released in the area south of the Gammon-Bloodvein rivers to the south and west shores of the Winnipeg River, including Lac du Bonnet, and the southern boundary of Whiteshell Provincial Park and from Lake Winnipeg to the Ontario border (excluding the Winnipeg River from the Pine Falls Dam to Lake Winnipeg). All minimum size limits for walleye have been removed.

### SPECIAL REGULATIONS FOR INDIVIDUAL WATERS

**Arrow Lake** - walleye limit is 4; all walleye shorter than 35 cm (14 in) must be released.

**Basket Creek** - closed to all fishing, including dip netting, from April 1 to and including May 9.

**Boissevain Reservoir** - all walleye shorter than 35 cm (14 in) must be released.

**Chain Lakes** - no motors, except electric motors, are allowed.

**Crawford Creek** - walleye/sauger limit is 4.

**Crowduck Lake** - all walleye must be released.

**Dauphin Lake and all inflowing tributaries** - the walleye/sauger limit is 4 and all walleye between 45 cm (18 in) and 70 cm (28 in) must be released. All inflowing tributaries and those parts of Dauphin Lake within 1 km of their mouths are closed to all fishing, including dip netting from April 1 to and including May 9. The remaining parts of Dauphin Lake remain open in March and are closed to all fishing from April 1 to and including May 9.

**Deloraine Reservoir** - all walleye shorter than 35 cm (14 in) must be released.

**Dog Lake Drain** - closed to all fishing, including dip netting, from April 1 to including May 9.

**Duck Mountain Provincial Park** - walleye limit is 4.

**Dufaults Creek** - closed to all fishing, including dip netting, from April 1 to and including May 9.

◆ **Echo Lake** - a High Quality Management Lake: limits of 4 walleye/sauger, 4 pike and 2 smallmouth bass.

◆ **Falcon Creek** - closed to all fishing, including dip netting, from April 1 to and including May 31.

**Goudney Reservoir** - all walleye shorter than 35 cm (14 in) must be released.

◆ **Hamilton Creek** - closed to all fishing, including dip netting, from April 1 to and including May 31.

**Hamlin Drain** - closed to all fishing, including dip netting, from April 1 to and including May 9.

◆ **Happy Lake** - walleye limit is 4.

◆ **Horseshoe Lake** - all smallmouth bass must be released.

**Killarney Lake** - walleye limit is 4; all walleye shorter than 35 cm (14 in) must be released.

**Lake of the Prairies and its tributaries**, including the Shell River west of PTH 83 and the Assiniboine River downstream to the bridge at Shellmouth - walleye/sauger limit 4; all walleye between 45 cm (18 in) and 70 cm (28 in) must be released. Anglers may fish with either a Manitoba or Saskatchewan angling licence upstream from the Shellmouth Dam (see border waters - page 4).

**Lake St. Andrews** - all smallmouth bass must be released.

**Limestone Bay (on Lake Winnipeg)** - closed to fishing all year.

**Lonely Lake Drain** - closed to all fishing, including dip netting, from April 1 to and including May 31.

◆ **Manigotagan Lake** - walleye limit is 4.

**Mary Jane Reservoir** - all walleye shorter than 35 cm (14 in) must be released.

**Mink Creek** - see Dauphin Lake.

**Minnedosa Lake** - see Wahtopannah Lake.

**Minnewasta Lake** - walleye limit is 4; all walleye shorter than 35 cm (14 in) must be released.

**Moose Lake (near Sprague)** - all walleye shorter than 35 cm (14 in) must be released.

**Ochre River** - see Dauphin Lake.

**Perch Lake** - all smallmouth bass and trout must be released.

**Porcupine Provincial Forest** - walleye limit is 4.

**Proulx Creek** and all other creeks and drains that intersect PR 328 to the east - closed to all fishing, including dip netting, from April 1 to and including May 9.

◆ **Quesnel (Caribou) Lake** - walleye limit is 4.

**Rapid City Reservoir** - see Wahtopannah Lake.

**Red River and all tributaries between Lockport Dam and Lake Winnipeg** - anglers may retain only 1 walleye longer than 70 cm (28 in) per year. Licence holders who catch and retain one of these fish must immediately record the date on the back of their licence. The walleye/sauger limit is 4.

**Red River** from Lockport Dam to 1 km downstream - dip netting and seining for bait fish only, not suckers; no bow fishing allowed.

**Rossman Lake** - walleye limit is 4; all walleye shorter than 35 cm (14 in) must be released.

◆ **Saddle Lake** - a High Quality Management Lake: limits of 4 walleye/ sauger, 4 pike and 2 smallmouth bass.

**Sandy Lake** - all walleye shorter than 35 cm (14 in) must be released.

**Shoal Lake (on the Ontario border)** - all walleye must be released.

◆ **Shoe Lake** - a High Quality Management Lake: limits of 4 walleye, 4 pike and 2 smallmouth bass.

**St. Malo Lake** - no motors, except electric motors, allowed.

◆ **Tooth Lake** - all smallmouth bass must be released.

**Turtle River from PTH 5 near Laurier to Dauphin Lake** - see Dauphin Lake.

**Valley River** - see Dauphin Lake.

**Vermilion River** - see Dauphin Lake.

**Verrall Lake** - all walleye shorter than 35 cm (14 in) must be released. The walleye limit is 4.

**Wahtopanah Lake and Little Saskatchewan River from the Rivers Dam upstream to Riding Mountain National Park, including Rapid City Reservoir and Minnedosa Lake** - a limit of 4 walleye/sauger and all walleye/sauger between 45 cm (18 in) and 70 cm (28 in) must be released. That portion of Wahtopanah Lake and the Little Saskatchewan River from PTH 24 to the Trans-Canada Pipeline crossing on Wahtopanah Lake is closed to all fishing, including dip netting, from April 1 to and including May 31.

**Wellman Lake** - walleye limit is 2 and all walleye between 45 cm (18 in) and 70 cm (28 in) must be released.

**West Blue Lake** - no motors, except electric motors, allowed.

**Whitefish Lake (in the Porcupine Hills)** including the Marina Lagoon - walleye limit is 4 and all walleye between 45 cm (18 in) and 70 cm (28 in) must be released.

◆ **Whiteshell River from West Hawk Lake to Caddy Lake** - trout limit is 0; closed to all fishing from November 1 to and including April 15.

◆ **Winnipeg River from the Ontario border to Pointe du Bois Dam (including Green Bay)** - smallmouth bass limit is 0; High Quality Management Water: limit of 4 walleye/sauger and 4 pike. All pike between 75 cm (30 in) and 110 cm (41 in) must be released.

**Winnipeg River from Pine Falls Generating Station to Lake Winnipeg to and including Traverse Bay** - anglers may retain only 1 walleye longer than 70 cm (28 in) per year. Licence holders who catch and retain one of these fish must immediately record the date on the back of their licence. The walleye/sauger limit is 4.

**Wilson River** - see Dauphin Lake.

**William Lake** - all smallmouth bass must be released.

### MERCURY IN FISH

Some fish from the Rat, Burntwood and Nelson River systems between Southern Indian Lake and Stephens Lake, and from certain areas of the Assiniboine River, Souris River, Red River and Winnipeg River systems, may have elevated mercury levels.

For further information about mercury in fish and for recommended consumption rates, please contact a Manitoba Conservation Office or phone the Resource Information Service at 945-6784.

### MANITOBA CONSERVATION OFFICES

Head Office (Winnipeg)	(204) 945-6784
Eastern Region (Lac du Bonnet)	(204) 345-1450
Western Region (Brandon)	(204) 726-6449
Western Region (Dauphin)	(204) 622-2205
Interlake Region (Gimli)	(204) 642-6072
Northwestern Region (The Pas)	(204) 627-8296
Northeastern Region (Thompson)	(204) 677-6650

For general information please call (204) 945-6784 or 1-800-214-6497

T.I.P. Line **1-800-782-0076**

### WEB SITES TO VISIT

Manitoba Fisheries	www.manitobafisheries.com
Manitoba Wildlife Federation	www.mwf.mb.ca/league/
Fish Futures Inc	www.fishfutures.net
Travel Manitoba	www.travelmanitoba.com
Manitoba Fisheries Education	www.gov.mb.ca/natres/sustain/
Sport Fishing Canada	www.sportfishingcanada.ca
National Fishing Week	www.nationalfishingweek.com

### FOR YOUR INFORMATION

Manitoba Natural Resource Officers play an important educational role in relation to angling regulations. To ensure that there is compliance to Manitoba's regulations, officers check anglers on a regular basis on the water but also periodically conduct Roadside Checkstops in cooperation with other enforcement agencies. To help make your angling experience enjoyable, please be aware of Manitoba's angling regulations.

The following are set, ticketable fines for the most common angling infractions. Fines may be higher depending on the severity and/or frequency of the infractions.

Using barbed hooks	.....\$50
Fishing without a licence	.....\$147
Over limit	.....\$100 plus
Transport live fish away from the water	.....\$200
Unattended Line	.....\$50
Failure to carry your licence while fishing	.....\$74

Take a break...  
Go fishing.

SportfishingCanada.ca

## NORTHWEST DIVISION REGULATIONS

**General Closure: May 1 to and including May 16. Season opens May 17** (refer to map on page 8 for Northwest Divisional boundaries).

- Barbless hooks must be used.
- From April 1 to and including April 30 and from May 17 to and including May 31, the walleye limit is 4 and all walleye over 55 cm (22 in) must be released.
- All smallmouth bass must be released.
- No live bait fish allowed.
- All lake trout over 65 cm (26 in) must be released.

### HIGH QUALITY MANAGEMENT

High Quality Management Waters in the Northwest Division are listed below. All have limits of 4 walleye/sauger, 4 pike and 1 lake trout and all pike over 75 cm (30 in) and all walleye over 55 cm (22 in) must be released.

Alberts Lake	McLeod Lake
Bacon Lake	Mikanagan Lake
Buzz Lake	Morgan Lake
Centre Lake	Niblock Lake
Cook Lake	Pineroot River
Corley Lake	Pothier Lake
Deep Lake	Rail Lake
Dolomite Lake	Snow Lake
File Lake	Squall Lake
*Grass River Provincial Park (see below)	Tramping Lake
Koblun Lake	Vickers Lake
Lac Aimee	Wabishkok Lake
Loonhead Lake	Whitefish Lake
McGhee Lake	Woosey Creek
	Woosey Lake

\* Grass River Provincial Park excluding Reed Lake (see Reed Lake regulation).

### STOCKED TROUT LAKES

No bow fishing, dip netting or seining is allowed on stocked trout waters. Annual stocking lists are available from your local Manitoba Conservation Office (see page 10).

The following stocked trout lakes are open to fishing all year. All pike and walleye caught in these waters from May 1 to and including May 16 must be released.

Amphipod Lake	Barbe Lake
Foot Print Lake	Kormans Lake
One Portage Lake	Scotty Lake
Webster Lake	

### LAKE SPECIFIC REGULATIONS

**Athapapuskow Lake** - the walleye limit is 4 and all walleye over 55 cm (22 in) must be released. The south end is closed to all fishing from September 15 to and including October 10. Quarry Bay and Quarry Bay Channel are closed to all fishing from May 1 to and including May 31.

**Clearwater Lake** - all pike over 75 cm (30 in) must be released. The west side is closed to all fishing from September 15 to and including October 10, on a line northeast from the end of Spawn Camp Point to the west side of the inlet of Pike Bay.

**Grass River from the outlet on Crowduck Bay to the rapids downstream (including Missipisew and Wuskatasko Rivers)** - closed to all fishing from April 1 to and including July 15.

**Grass River** from the CN rail line just north of Iskwasum Lake to the inlet of Reed Lake (including Iskwasum, Loucks, and Flag lakes) - closed to all fishing from May 1 to and including May 31.

**Kisseynew Lake and Kississing River** from Kisseynew Lake to Kississing Lake - closed to all fishing from May 1 to and including May 31. On Kisseynew Lake the walleye limit is 4.

**Kississing Lake** and its tributaries, including Bartlett Lake - lake trout limit is 1. All pike over 75 cm (30 in) must be released. The pike limit is 4. All nonresidents who fish must be registered and staying with, and obtain a Special Angling Licence (free) from, a licensed Manitoba tourist operator with an allocation for this fishery.

**Morgan Lake** - closed to all fishing from May 1 to and including May 31.

**Morton Lake** - walleye limit is 2 and pike limit is 2. All nonresidents who fish must be registered and staying with, and obtain a Special Angling Licence (free) from, a licensed Manitoba tourist operator with an allocation for this fishery.

**Osborne Lake, Osborne Lake Creek and Wekusko Brook** - closed to all fishing from April 1 to and including July 15. Pike limit is 4. Walleye limit is 4 and all walleye over 45 cm (18 in) must be released.

**Pickereel Creek** - closed to all fishing, including dip netting, from April 19 to and including May 16.

**Reed Lake, including Krug Lake, Jackfish Lake, Jackfish Lake Creek, Woosey Creek between Reed Lake and Halfway Lake, and all other tributaries of Reed Lake, including Grass River from Flag Lake to Tramping Lake** - the limits are 2 walleye, 2 pike and 1 lake trout. All pike over 75 cm (30 in) and all walleye over 55 cm (22 in) must be released.

**Rocky Lake** - walleye limit is 4. Goose Bay is closed to all fishing from November 1 to and including May 16.

**Saskatchewan River from Grand Rapids Generating Station (including the hydro spillway) to PTH 6** - closed to all fishing from April 1 to and including May 16.

**Saskatchewan River** from Grand Rapids Generating Station to 1 km downstream - no bow fishing, dip netting or seining.

**Snow Creek** from Compton Lake to Snow Lake - closed to all fishing from May 1 to and including May 31.

**Wabishkok Lake** - closed to all fishing from May 1 to and including May 31.

**Wekusko Lake** - pike limit is 4. Walleye limit is 4 and all walleye over 45 cm (18 in) must be released. Closed to all fishing from April 1 to and including May 16. Herb Bay north of the hydro line on Wekusko Lake is closed to all fishing from April 1 to and including July 15.

**Whitefish Lake and Pineroot River** from Whitefish Lake to and including Wabishkok Lake - closed to all fishing from May 1 to and including May 31.

**Woosey Lake and Woosey Creek** between Woosey Lake and Morgan Lake - closed to all fishing from May 1 to and including May 31.

### PROTECTION OF PRIVACY ACT

Personal information collected on angling licenses falls under the authority of **The Fisheries Act (Chapter F90), Fishing Licensing Regulation 124/97 and will be used only for existing program activities, surveys and enforcement by Manitoba Conservation.**

It is protected by the Protection of Privacy provisions of The Freedom of Information and Protection of Privacy Act. For questions about the collection, contact: 945-4170.



## NORTH CENTRAL DIVISION REGULATIONS

**General Closure: May 1 to and including May 16. Season opens May 17** (refer to map on page 8 for North Central Divisional boundaries).

- Barbless hooks must be used.
- No live bait fish.

### HIGH QUALITY MANAGEMENT

High Quality Management Waters in the North Central Division are listed below. All have limits of 4 walleye/sauger, 4 pike and 1 lake trout and all pike over 75 cm (30 in), all walleye over 55 cm (22 in) and all lake trout over 65 cm (26 in) must be released.

Berge Lake	Little Brightsand Lake
Black Trout Lake	Little Chipewyan Lake
Border Lake	Liz Lake
Chicken Lake	MacGranachan Lake
Clarke Creek and Lake	Matheson Lake
Conlin Lake	McGavock Lake
Cousins Lake	Mooswa Creek and Lake
Dafoe Lake	Motrick Lake
Dunphy Lake	Nesbitt Lake
Eager Lake	Numakoos Lake
Eden Lake	Plumbtree Lake
Frances Lake	Preston Lake
Ghost Lake	Running Bear Lake
Goose Hunting Lake	Sickle Lake
Grass River from	Teal Lake
Bald Eagle Lake to Witchai	Tenklei Lake
Lake	Tod Lake
Hunter Lake	Tractor Lake
Joey Lake	Turnbull Lake
Lasthope Lake	Van Lake
Laurie Lake	Vandekerckhove Lake
Laurie River (from Sask. bor-	Velde Lake
der east to the railway line)	Willis Lake
<b>Leffrook Lake</b>	Zed Lake

### STOCKED TROUT LAKES AND LAKE TROUT WATERS

No bow fishing, dip netting, or seining are allowed on stocked trout waters. Annual stocking lists are available from your local Manitoba Conservation Office (see page 10). The following stocked trout lakes are open to fishing all year. All pike and walleye caught in these waters from May 1 to and including May 16 must be released. No motors, except electric motors, are allowed on those marked with \*.

Bowden Lake	Crater Lake
* Digney Lake	* Gemmell Lake
Hambone Lake	Hidden Lake
Leaf Lake	Little Troy Lake
* Mid Lake	Upper Ospwagan Lake

### LAKE SPECIFIC REGULATIONS

**Fish Lake and Setting Creek (Fish Creek) and including that part of Setting Lake within 2 km of the mouth of Setting Creek** - closed to all fishing from April 1 to and including July 15.

**Kiski Lake and Kiski Creek** - closed to all fishing from May 1 to and including July 15.

**McLaren Creek** - closed to all fishing from May 1 to and including May 31.

**Nelson River** and its tributaries - the tributaries of the Nelson River from Kettle Generating Station downstream to the mouth are closed to brook trout fishing from September 1 to and including September 30.

**Owl Creek** - closed to all fishing from May 1 to and including May 31.

**Thompson Creek** - closed to all fishing from May 1 to and including May 31.

**Vandekerckhove Lake** - all nonresidents who fish must be registered and staying with, and obtain a Special Angling Licence (free) from, a licensed Manitoba tourist operator with an allocation for this fishery.

**Velde Creek (including Joey Creek)** - closed to all fishing from May 1 to and including May 31.

**Wintering Lake** - walleye limit is 4.

## NORTHEAST DIVISION REGULATIONS

Generally open to angling all year (refer to page 8 for Northeast Divisional boundaries).

- Barbless hooks must be used.
- No live bait fish.

### HIGH QUALITY MANAGEMENT

High Quality Management Waters in the Northeast Division are listed below. All have limits of 4 walleye/sauger, 4 pike and 1 lake trout, and all walleye over 55 cm (22 in), all pike over 75 cm (30 in), all lake trout over 65 cm (26 in) and all Arctic grayling over 40 cm (16 in) must be released.

Acheetamo Lake	Kautunigan Lake
Aikens Lake	Keschismeeneko Lake
Amphibian Lake	Kistigan Lake
Anishinabe Lake	Knee Lake
Apisko Lake	Lewis Lake
Askey Lake	Little Duck Lake
Assapan Lake	Little Stull Lake
Assinika Lake	Long Lake (Berens River)
Bain Lake	MacLeod Lake
Baralzon Lake	McMurray Lake
Bear Lake	Manapaywi Lake
Bear Head Lake	Mantricia Lake
Bennett Lake	Maria Lake
Black Currant Lake	Max Lake
Bolton Lake	Meat Lake
Brad Lake	Molson Lake including Paimusk
Brisebois Lake	Creek and all other tributaries
Brownstone Lake	Munroe Lake
Burnie Lake	Muskasew Lake
Caron Lake	Muskosemunomin Lake
Carr-Harris Lake	Nejanilini Lake
Carroll Lake	Nicklin Lake
Craven Lake	North Knife Lake
Cobham River from the border	Nueltin Lake
downstream to Elliot Lake	Opiminekoka Lake
Commonwealth Lake	Otter Lake
Douglas Lake	Poplar River (from Wrong Lake
Eakins Lake	to Ontario border)
Eardley Lake	Recluse Lake
Edmund Lake	Red Willow Lake
Egenolf Lake	Rorke Lake
Elliot Lake	Sasaginnigak Lake
Fairy Rock Lake	Sawdon Lake
Fishing Lake	Silsby Lake
Gammon River	South Knife Lake
Gods Lake	Sparrowhawk Lake
Gunisao Lake	Stevens Lake
Harrop Lake	Stull Lake
Head Leaf Lake	Thomas Lake
High Hill Lake	Thunder Lake
Holmes Lake	Timewe Lake
Horseshoe Lake	Tseeteli Lake
Jensen Lake	Utik Lake
Joint Lake	Viking Lake
Kagipo Lake	Warrington Lake
Kakeenokamak Lake	Wendigo Lake
Kanapakaksis Lake	Whiskey Jack Lake
Kasmere Lake	Wrong Lake

## LAKE SPECIFIC REGULATIONS

**Gods Lake** - all nonresidents who fish must be registered and staying with, and obtain a Special Angling Licence (free) from, a licensed Manitoba tourist operator with an allocation for this fishery. A High Quality Management Lake.

**Gods River** (from Gods Lake to Great Bear Falls) - all brook trout must be released.

**Molson Lake** and its tributaries (except Paimusk Creek) - closed to fishing from May 1 to and including May 16. All nonresidents who fish must be registered and staying with, and obtain a Special Angling Licence (free) from, a licensed Manitoba tourist operator with an allocation for this fishery. A High Quality Management Lake.

**Nelson River** and its tributaries - closed to brook trout fishing from September 1 to and including September 30.

**Nuelin Lake** - all nonresidents who fish must be registered and staying with, and obtain a Special Angling Licence (free) from, a licensed Manitoba tourist operator with an allocation for this fishery. A High Quality Management Lake.

**Paimusk Creek** - closed to fishing from May 1 to and including May 31. All nonresidents who fish must be registered and staying with, and obtain a Special Angling Licence (free) from, a licensed Manitoba tourist operator with an allocation for this fishery. A High Quality Management Water.

## FISHING REGULATIONS AND STATUS INDIAN PEOPLE

The Natural Resources Transfer Agreement, which forms part of the Constitution Act (1930), provides that Indian people have the right to fish for food on all unoccupied Crown lands and on any other lands to which they may have a right of access.

Recognizing the Treaty and constitutional rights of Indian people, Manitoba Conservation considers that status Indians:

- Do not require a licence to fish for food by angling or other means.
- Do not require an angling licence to fish for recreational purposes or to participate in a competitive fishing event, but must follow all regulations when not fishing for food.
- Are not subject to gear restrictions such as the use of gill nets or the number of lines that can be used by angling, however, any unattended gear must be clearly marked with the owner's name and treaty number.
- Except for conservation closures, are generally not restricted to seasons, limits or areas.
- May angle in stocked trout waters but may not use nets or other methods of fishing.
- May not block more than two-thirds of a river or stream with a net or other device.
- May not fish within 25 yards of a fish ladder or fishway.
- May not sell fish caught under status Indian fishing rights or give fish to a non-Indian person.
- May transport fish from the catch point directly to their nearest residence.
- Must obtain a Fish Transportation Loadslip if fish in excess of a regular limit are to be transported to a location other than their nearest residence.
- While employed as guides or outfitters, may not fish using their treaty or constitutional rights in any manner that could benefit their employer or their business.
- When exercising their rights, are strongly encouraged to carry proof of status.

Non-Indian people may accompany Indian people that are fishing but may not help them to exercise their food fishing rights. For example, non-Indian people could not set or lift nets, however, they could assist in transporting fish while accompanying a status Indian person.

For more detailed information, please contact the nearest Manitoba Conservation office, or telephone 945-6784 in Winnipeg, 1-800-214-6497 outside Winnipeg or visit the Conservation web site at: <http://www.gov.mb.ca/departments.html#conservation>.

## ANGLING PROGRAMS AND SPECIAL EVENTS IN 2003

This page lists activities to be held in Manitoba in 2003 that are directed towards providing people with opportunities to learn more about angling.

**"LEARN TO FISH"** - Winnipeg's Community Services Department, in cooperation with the Mid-Canada Marine Dealers Association and their member tackle retailers, and Manitoba Conservation, and with assistance from the Manitoba Wildlife Federation, will again be offering a "Learn to Fish Program" within the city limits through the city's leisure program. This program is directed towards individuals and families who wish to get started fishing or wish to learn more about fishing in the city. For more information on this or other city angling programs call 986-3112.

**"FAMILY FISHING WEEKEND"** - Family Fishing Weekend will be held on June 7-8, 2003 across Manitoba (excluding federal parks). During this weekend, people wishing to fish may do so without acquiring a licence. All other rules and regulations will apply. For more information, call 945-6784.

**"WINNIPEG FISH FESTIVAL"** - Through the efforts of the Mid-Canada Marine Dealers Association, Winnipeg's Community Services Department and Manitoba Conservation, and with assistance from the Manitoba Wildlife Federation, the seventh annual Winnipeg Fish Festival will be held on July 5, 2003 at The Forks. The "how to's" of fishing, where to fish and how to handle your catch will be some of the seminars offered during the day as well as activities for children of all ages. The Festival will run from 11:00 am to 4:00 pm and admission is free. For more information, call 986-3112.

**"BECOMING AN OUTDOORS WOMAN"** - On May 9-11, 2003, the Manitoba Wildlife Federation is again offering a workshop designed for women to learn outdoor skills. The workshop is directed towards beginners or those who may wish to try a new activity. Angling is only one of many topics offered. For more information, call the Manitoba Wildlife Federation office at 204-633-5967.

**"NATIONAL FISHING WEEK"** - This is an initiative of the Canadian National Sportfishing Foundation and the National Recreational Fishing Task Group representing the collective provinces and territories. During this week (July 5-13, 2003), Canadians will be encouraged to experience the excitement and the many benefits of recreational fishing through a number of promotional events.

# Common Manitoba Fish Species



Walleye



Yellow Perch



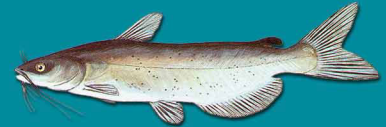
Bullhead



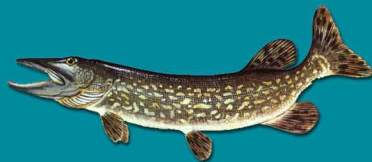
Sauger



Burbot



Channel Catfish



Northern Pike



Carp



Smallmouth Bass



Goldeye



Freshwater Drum



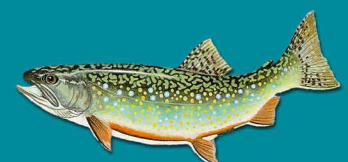
Lake Trout



Mooneye

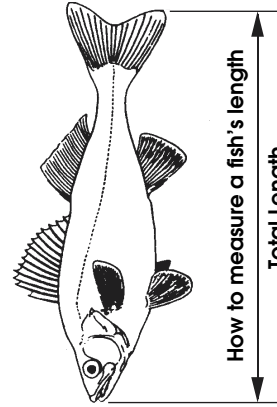


White Bass



Brook Trout

# TRAVEL MANITOBA MASTER ANGLER PROGRAM



## LENGTH REQUIREMENTS

Species	Minimum Length	*Designated Picture Length
Arctic Char	50 cm (20 in)	60 cm (24 in)
Arctic Grayling	45 cm (18 in)	50 cm (20 in)
Black Crappie	30 cm (12 in)	35 cm (14 in)
Brook Trout	50 cm (20 in)	60 cm (24 in)
Brown Trout	50 cm (20 in)	60 cm (24 in)
Bullhead	30 cm (12 in)	35 cm (14 in)
Burbot	75 cm (30 in)	90 cm (36 in)
Carp	75 cm (30 in)	85 cm (33 in)
Channel Catfish	86 cm (34 in)	100 cm (39 in)
Freshwater Drum	60 cm (24 in)	75 cm (30 in)
Goldeye	35 cm (14 in)	40 cm (16 in)
Kokanee	50 cm (20 in)	50 cm (20 in)
Lake Trout	90 cm (35 in)	105 cm (41 in)
Largemouth Bass	45 cm (18 in)	50 cm (20 in)
Mooneye	35 cm (14 in)	40 cm (16 in)
Muskellunge	80 cm (31 in)	80 cm (31 in)
Northern Pike	105 cm (41 in)	120 cm (47 in)
Perch	33 cm (13 in)	38 cm (15 in)
Rainbow Trout	50 cm (20 in)	60 cm (24 in)
Rock Bass	25 cm (10 in)	30 cm (12 in)
Sauger	45 cm (18 in)	55 cm (22 in)
Smallmouth Bass	45 cm (18 in)	50 cm (20 in)
Spoke	50 cm (20 in)	60 cm (24 in)
Sturgeon	110 cm (43 in)	140 cm (55 in)
Tullibee	40 cm (16 in)	50 cm (20 in)
Walleye	70 cm (28 in)	80 cm (32 in)
White Bass	38 cm (15 in)	45 cm (18 in)
Whitefish	55 cm (22 in)	65 cm (26 in)

Each year, many exceptional trophy fish are caught in Manitoba waters. For this reason, a **DESIGNATED PICTURE LENGTH CATEGORY** was established. Anglers whose fish are equal to or exceed the length in this category (shaded column) must submit a picture with a measuring device or some object of standard size in addition to the witnesses (refer to Manitoba Master Angler Award rules #3 and #4).

## MANITOBA MASTER ANGLER AWARD RULES

1. Fish must be caught in Manitoba by angling for recreation in accordance with Provincial Angling Regulations.
2. Anglers must measure the length of a fish to qualify for a Manitoba Master Angler Award as illustrated on the previous page.
3. Two witnesses, or one witness and a picture are required. All pictures will become the property of Travel Manitoba.
4. Any entry for a fish equal to or exceeding the designated picture length for the species must be accompanied by a side-view photo of the fish with a measuring device or some object of standard size, like the angling licence, that can be used to verify the measurement of that fish.
5. Qualifying fish must be submitted on an official entry form or copy of (one fish per entry form). No changes in the length started on the application form will be accepted.

6. Once five fish of a given species are entered in the Master Angler Program, the angler may enter only those fish that exceed his or her smallest fish for that species to a maximum of three (per year).
7. Travel Manitoba will be the sole and final judge as to the acceptance of the entries, and reserves the right to request additional information and requirements as may be deemed necessary in the best interest of the program.
8. Although awards are issued continuously, the Master Angler Awards annual deadline for publishing purposes is September 30.
9. Entries may not be listed if they have not been received within one month of the date when the fish was caught.
10. Only one bronze, silver, or gold badge and release crest will be awarded to any one angler, but certificates will be presented for all qualifying fish. Different specialist badges will be awarded for each species.

For more information contact:  
The Manitoba Master Angler Program at  
(204) 945-4254



## MANITOBA MASTER ANGLER AWARD APPLICATION

SEND ENTRIES TO:  
Travel Manitoba  
Master Angler Program  
7-155 Carlton St.  
Winnipeg, Manitoba, R3C 3H8

I hereby declare that the following statements are true, that in taking this fish I complied with the rules."

Kind of fish \_\_\_\_\_ inches, or \_\_\_\_\_ cm  
 Length: \_\_\_\_\_ Fish Kept \_\_\_\_\_ Date Caught: Month \_\_\_\_\_ Day \_\_\_\_\_ Year \_\_\_\_\_  
 Fish Released \_\_\_\_\_  
 Name of Water \_\_\_\_\_

I have entered the Master Angler Program before: No  Yes  I.D.# \_\_\_\_\_

If required, please enclose a "Designated Picture Length" photo.

We, the undersigned, witnessed the measuring of the fish described above and verified the length given.

Please Print

1 Name \_\_\_\_\_ Angler  
 Address \_\_\_\_\_ Mr/Mrs./Ms \_\_\_\_\_  
 Phone \_\_\_\_\_ (full first name and surname)  
 Address \_\_\_\_\_  
 City or Town \_\_\_\_\_  
 Province or State \_\_\_\_\_  
 Postal or Zip Code \_\_\_\_\_  
 Phone \_\_\_\_\_  
 Signature \_\_\_\_\_  
 Signature \_\_\_\_\_ (home) \_\_\_\_\_ (business) \_\_\_\_\_  
 Signature \_\_\_\_\_

2 Name \_\_\_\_\_  
 Address \_\_\_\_\_  
 Phone \_\_\_\_\_  
 Signature \_\_\_\_\_  
 Signature \_\_\_\_\_