

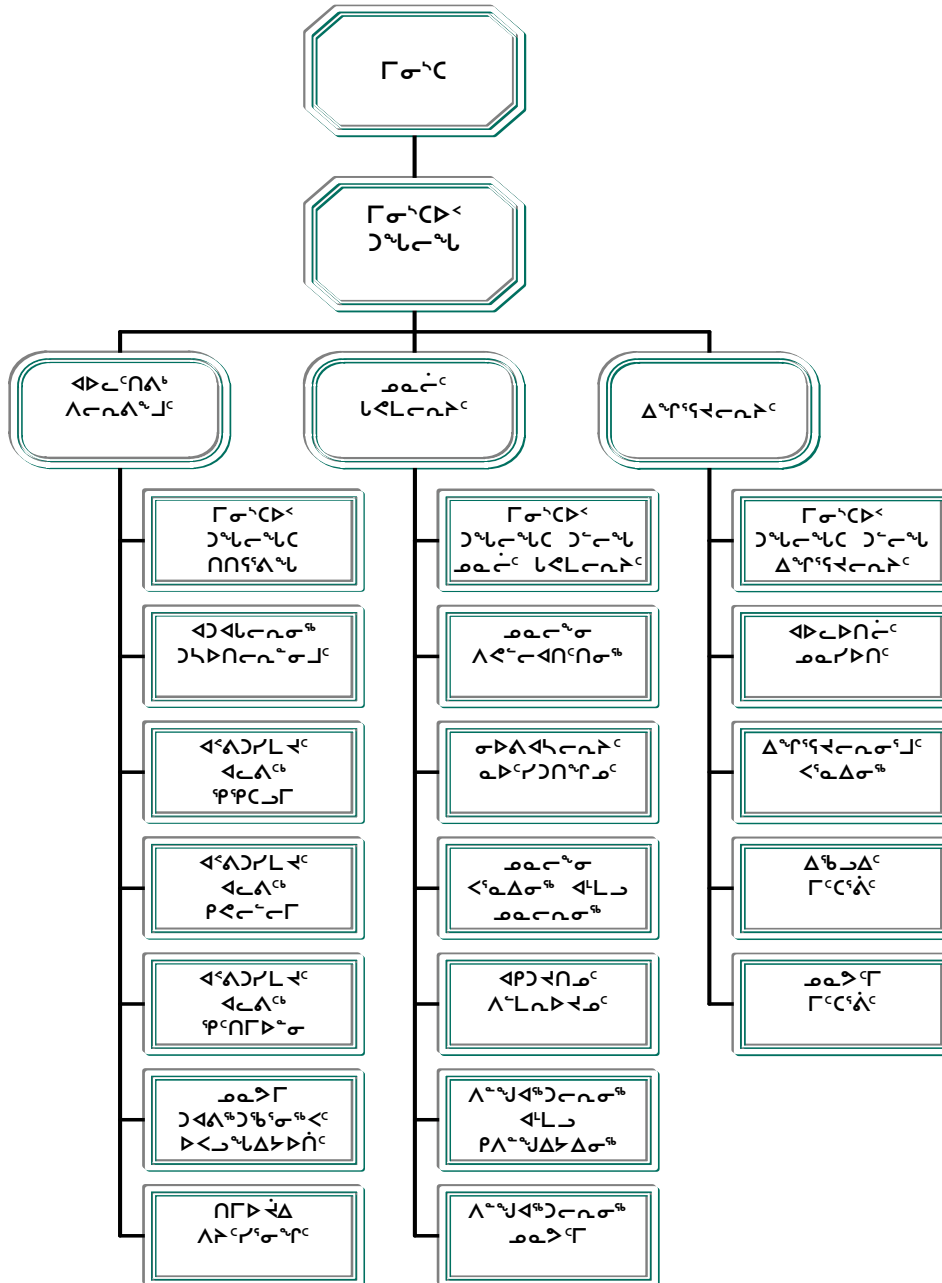
ግብርና ሥራ
 ሥራ

ግብርና ሥራ
 ግብርና ሥራ ለማስፈጸም

ግብርና ሥራ
 ግብርና ሥራ ለማስፈጸም

ግብርና ሥራ
 ግብርና ሥራ ለማስፈጸም

የግብርና ሥራ ለማስፈጸም ለሚያስፈልጉት



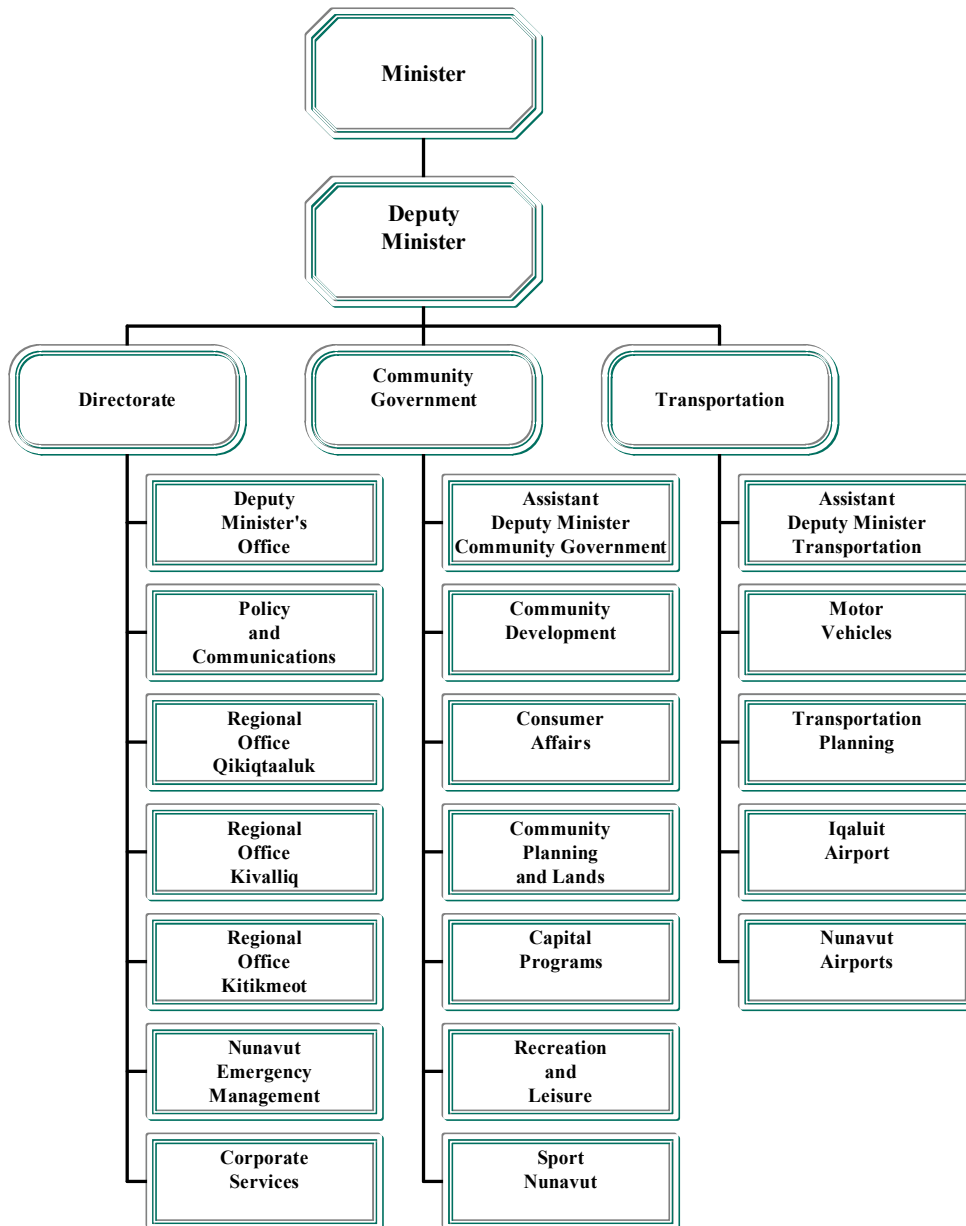
Manitok Thompson
 Minister

Methusalah Kunuk
 Assistant Deputy Minister

John Walsh
 Deputy Minister

Shawn Maley
 Assistant Deputy Minister

ACCOUNTING STRUCTURE CHART



ᓴᓴᓂᓪᓴᓂᓪᓴᓂᓪ ᓴᓴᓂᓪᓴᓂᓪ
DETAIL OF EXPENDITURES

		ᓴᓴᓂᓪᓴᓂᓪ ᓴᓂᓴᓂᓪᓴᓂᓪ	ᓴᓴᓂᓪᓴᓂᓪᓴᓂᓪ ᓴᓂᓴᓂᓪᓴᓂᓪᓴᓂᓪ	ᓴᓴᓂᓪᓴᓂᓪ ᓴᓂᓴᓂᓪᓴᓂᓪ
		2003-2004 Capital Estimates (\$000)	2002-2003 Revised Estimates (\$000)	2002-2003 Capital Estimates (\$000)
ᓴᓴᓂᓪᓴᓂᓪ ᓴᓴᓂᓪᓴᓂᓪ	Capital Expenditures			
ᓴᓴᓂᓪᓴᓂᓪ ᓴᓴᓂᓪ ᓴᓴᓂᓪᓴᓂᓪ	Grants and Contributions	11,782	5,661	4,784
ᓴᓴᓂᓪᓴᓂᓪ ᓴᓴᓂᓪ	Tangible Assets	15,443	21,799	12,266
ᓴᓴᓂᓪᓴᓂᓪ ᓴᓴᓂᓪᓴᓂᓪ ᓴᓴᓂᓪᓴᓂᓪ ᓴᓴᓂᓪᓴᓂᓪᓴᓂᓪ	Computer Hardware and Software	-	-	-
ᓴᓴᓂᓪᓴᓂᓪ ᓴᓴᓂᓪᓴᓂᓪ ᓴᓴᓂᓪᓴᓂᓪ	Total Capital Expenditures	27,225	27,460	17,050

ᓄᓇᓂᑦ ᓂᑲᓚᓕᓂᓴᑦ
 COMMUNITY GOVERNMENT

ᐱᓕᓂᐱᑦᑦᑦᑦ ᓄᓴᓴᑦ	ᐃᑦᑦᑦᑦᑦ ᓄᓇᓄᓴᓴᑦ	ᐃᑦᑦᑦᑦᑦ ᐃᑦᑦᑦᑦᑦ	ᐃᑦᑦᑦᑦᑦᑦᑦ	ᐃᑦᑦᑦᑦᑦᑦ
Project Number	Detail of Capital	2003-2004 Capital Estimates (\$000)	2002-2003 Prior Year Cost (\$000)	2004-2008 Capital Plan (\$000)
ᐃᑦᑦᑦᑦᑦ ᐱᑦᑦᑦ				
Tangible Assets				
	ᑦᑦᑦᑦᑦ			
	Kugluktuk			
500043	ᐃᓴᓴᓴᑦ ᐃᓚᑦᑦᑦᑦ ᓴᓄᓴᓴᓴᑦ	15	340	-
	Replace Water Supply Line			
507506	ᐱᓴᓴᓴᑦ ᓚᓴᓴᑦ ᓄᓴᓴᓴᑦ	680	50	30
	3 Bay Parking Garage			
507533	ᐃᓴᓴᓴᑦ ᐃᓴᓴᓴᑦ	30	-	1,570
	Replace Water Tanks			
	ᓴᓴᓴᑦ			
	Taloyoak			
507509	ᑦᑦᑦᑦᑦᑦ	20	900	-
	Fire Hall			
	ᑦᑦᑦᑦᑦ - ᓄᓴᓴᓴᑦ			
	Kitikmeot - Various			
507503	ᓴᓴᓴᓴᑦ	30	-	680
	Granular Materials			
	ᓂᑦᑦᑦᑦ ᑦᑦᑦᑦᑦ Total Kitikmeot Region	4,945	-	-
	ᓂᑦᑦᑦᑦ ᐃᑦᑦᑦᑦᑦ ᐃᑦᑦᑦᑦᑦ ᐱᑦᑦᑦ	10,483	-	-
	Total Tangible Assets			

ᐃᓪᓂᓪᓂᓪᓂᓪᓂᓪ
TRANSPORTATION

ᐱᓕᓂᓪᓂᓪᓂᓪ ᓂᓪᓂᓪᓂᓪ Project Number	ᐃᓂᓂᓪᓂᓪᓂᓪᓂᓪ Detail of Capital	ᐃᓂᓂᓪᓂᓪᓂᓪᓂᓪ ᐃᓂᓂᓪᓂᓪᓂᓪᓂᓪ 2003-2004 Capital Estimates (\$000)	ᐃᓂᓂᓪᓂᓪᓂᓪᓂᓪᓂᓪ ᐃᓂᓂᓪᓂᓪᓂᓪᓂᓪᓂᓪ 2002-2003 Prior Year Cost (\$000)	ᐃᓂᓂᓪᓂᓪᓂᓪᓂᓪᓂᓪ ᐃᓂᓂᓪᓂᓪᓂᓪᓂᓪ 2004-2008 Capital Plan (\$000)
ᐃᓂᓂᓪᓂᓪᓂᓪᓂᓪᓂᓪ Tangible Assets				
ᐃᓂᓂᓪᓂᓪᓂᓪᓂᓪᓂᓪ Iqaluit				
507032	ᓂᓂᓂᓪᓂᓪᓂᓪᓂᓪᓂᓪ AME - Sweeper	200	-	-
ᓂᓂᓂᓪᓂᓪᓂᓪᓂᓪᓂᓪ Kimmirut				
507033	ᓂᓂᓂᓪᓂᓪᓂᓪᓂᓪᓂᓪ AME - Grader	225	-	-
ᓂᓂᓂᓪᓂᓪᓂᓪᓂᓪᓂᓪ Nanisivik				
500059	ᐃᓂᓂᓪᓂᓪᓂᓪᓂᓪᓂᓪ Highway Upgrades	200	200	200
507050	ᓂᓂᓂᓪᓂᓪᓂᓪᓂᓪᓂᓪ AME - Inspection Vehicle	40	-	-
ᓂᓂᓂᓪᓂᓪᓂᓪᓂᓪᓂᓪ Pond Inlet				
507034	ᓂᓂᓂᓪᓂᓪᓂᓪᓂᓪᓂᓪ Airport - Inspection Vehicle	40	-	-
507035	ᓂᓂᓂᓪᓂᓪᓂᓪᓂᓪᓂᓪ Upgrade Landing Aids	250	-	-
ᓂᓂᓂᓪᓂᓪᓂᓪᓂᓪᓂᓪ Qikiqtarjuaq				
507029	ᓂᓂᓂᓪᓂᓪᓂᓪᓂᓪᓂᓪ AME - Inspection Vehicle	40	-	-
507036	ᓂᓂᓂᓪᓂᓪᓂᓪᓂᓪᓂᓪ AME - Packer	20	-	-
ᓂᓂᓂᓪᓂᓪᓂᓪᓂᓪᓂᓪ Resolute Bay				
507027	ᓂᓂᓂᓪᓂᓪᓂᓪᓂᓪᓂᓪ Rehabilitate Runway/Taxiway/Apron	1,000	1,100	25
ᓂᓂᓂᓪᓂᓪᓂᓪᓂᓪᓂᓪ Total Qikitaaluk Region		2,805	-	-

ᓂᓴᓴᓂᓪᓂᓪᓂᓪᓂᓪᓂᓪ
TRANSPORTATION

ᓂᓴᓴᓂᓪᓂᓪᓂᓪᓂᓪᓂᓪ ᓂᓴᓴᓂᓪᓂᓪᓂᓪᓂᓪᓂᓪ Project Number	ᓂᓴᓴᓂᓪᓂᓪᓂᓪᓂᓪᓂᓪᓂᓪ Detail of Capital	ᓂᓴᓴᓂᓪᓂᓪᓂᓪᓂᓪᓂᓪᓂᓪ ᓂᓴᓴᓂᓪᓂᓪᓂᓪᓂᓪᓂᓪ 2003-2004 Capital Estimates (\$000)	ᓂᓴᓴᓂᓪᓂᓪᓂᓪᓂᓪᓂᓪᓂᓪ ᓂᓴᓴᓂᓪᓂᓪᓂᓪᓂᓪᓂᓪ 2002-2003 Prior Year Cost (\$000)	ᓂᓴᓴᓂᓪᓂᓪᓂᓪᓂᓪᓂᓪᓂᓪ ᓂᓴᓴᓂᓪᓂᓪᓂᓪᓂᓪᓂᓪ 2004-2008 Capital Plan (\$000)
ᓂᓴᓴᓂᓪᓂᓪᓂᓪᓂᓪᓂᓪᓂᓪ Tangible Assets				
ᓂᓴᓴᓂᓪᓂᓪᓂᓪᓂᓪᓂᓪᓂᓪ Kivalliq Region				
ᓂᓴᓴᓂᓪᓂᓪᓂᓪᓂᓪᓂᓪᓂᓪ Baker Lake				
507342	ᓂᓴᓴᓂᓪᓂᓪᓂᓪᓂᓪᓂᓪᓂᓪ AME - Packer	20	-	-
ᓂᓴᓴᓂᓪᓂᓪᓂᓪᓂᓪᓂᓪᓂᓪ Chesterfield Inlet				
507345	ᓂᓴᓴᓂᓪᓂᓪᓂᓪᓂᓪᓂᓪᓂᓪ Airport Granular Stockpile	325	-	825
ᓂᓴᓴᓂᓪᓂᓪᓂᓪᓂᓪᓂᓪᓂᓪ Coral Harbour				
507320	ᓂᓴᓴᓂᓪᓂᓪᓂᓪᓂᓪᓂᓪᓂᓪ Rehabilitate Airport Garage	800	400	-
507339	ᓂᓴᓴᓂᓪᓂᓪᓂᓪᓂᓪᓂᓪᓂᓪ Airport - Packer	20	-	-
ᓂᓴᓴᓂᓪᓂᓪᓂᓪᓂᓪᓂᓪᓂᓪ Whale Cove				
507328	ᓂᓴᓴᓂᓪᓂᓪᓂᓪᓂᓪᓂᓪᓂᓪ Upgrade Airport Access Road	10	172	-
507338	ᓂᓴᓴᓂᓪᓂᓪᓂᓪᓂᓪᓂᓪᓂᓪ AME - Packer	20	-	-
ᓂᓴᓴᓂᓪᓂᓪᓂᓪᓂᓪᓂᓪᓂᓪ Total Kivalliq Region		1,195	-	-

ᓂᓴᓂᓂᓪᓂᓪᓂᓪᓂᓪ
TRANSPORTATION

ᓂᓴᓂᓂᓪᓂᓪᓂᓪᓂᓪ	ᓂᓴᓂᓂᓪᓂᓪᓂᓪᓂᓪ	ᓂᓴᓂᓂᓪᓂᓪᓂᓪᓂᓪ	ᓂᓴᓂᓂᓪᓂᓪᓂᓪᓂᓪ	ᓂᓴᓂᓂᓪᓂᓪᓂᓪᓂᓪ
ᓂᓴᓂᓂᓪᓂᓪᓂᓪᓂᓪ	ᓂᓴᓂᓂᓪᓂᓪᓂᓪᓂᓪ	ᓂᓴᓂᓂᓪᓂᓪᓂᓪᓂᓪ	ᓂᓴᓂᓂᓪᓂᓪᓂᓪᓂᓪ	ᓂᓴᓂᓂᓪᓂᓪᓂᓪᓂᓪ
Project Number	Detail of Capital	Capital Estimates (\$000)	Prior Year Cost (\$000)	Capital Plan (\$000)
ᓂᓴᓂᓂᓪᓂᓪᓂᓪᓂᓪᓂᓪ				
Tangible Assets				
<i>ᓂᓴᓂᓂᓪᓂᓪᓂᓪᓂᓪᓂᓪ</i>				
Kitikmeot Region				
<i>ᓂᓴᓂᓂᓪᓂᓪᓂᓪᓂᓪᓂᓪ</i>				
Gjoa Haven				
507531	ᓂᓴᓂᓂᓪᓂᓪᓂᓪᓂᓪᓂᓪ ᓂᓴᓂᓂᓪᓂᓪᓂᓪᓂᓪ Renovate Air Terminal Bldg	430	-	550
<i>ᓂᓴᓂᓂᓪᓂᓪᓂᓪᓂᓪᓂᓪ</i>				
Kugaaruk				
507532	ᓂᓴᓂᓂᓪᓂᓪᓂᓪᓂᓪᓂᓪ ᓂᓴᓂᓂᓪᓂᓪᓂᓪᓂᓪ AME - Packer	20	-	-
<i>ᓂᓴᓂᓂᓪᓂᓪᓂᓪᓂᓪᓂᓪ</i>				
Taloyoak				
507534	ᓂᓴᓂᓂᓪᓂᓪᓂᓪᓂᓪᓂᓪ ᓂᓴᓂᓂᓪᓂᓪᓂᓪᓂᓪ Replace Airfield Lighting	40	-	550
507535	ᓂᓴᓂᓂᓪᓂᓪᓂᓪᓂᓪᓂᓪ ᓂᓴᓂᓂᓪᓂᓪᓂᓪᓂᓪ AME - Inspection Vehicle	40	-	-
ᓂᓴᓂᓂᓪᓂᓪᓂᓪᓂᓪᓂᓪ Total Kitikmeot Region		530	-	-
ᓂᓴᓂᓂᓪᓂᓪᓂᓪᓂᓪᓂᓪ Total Tangible Assets		4,960	-	-

