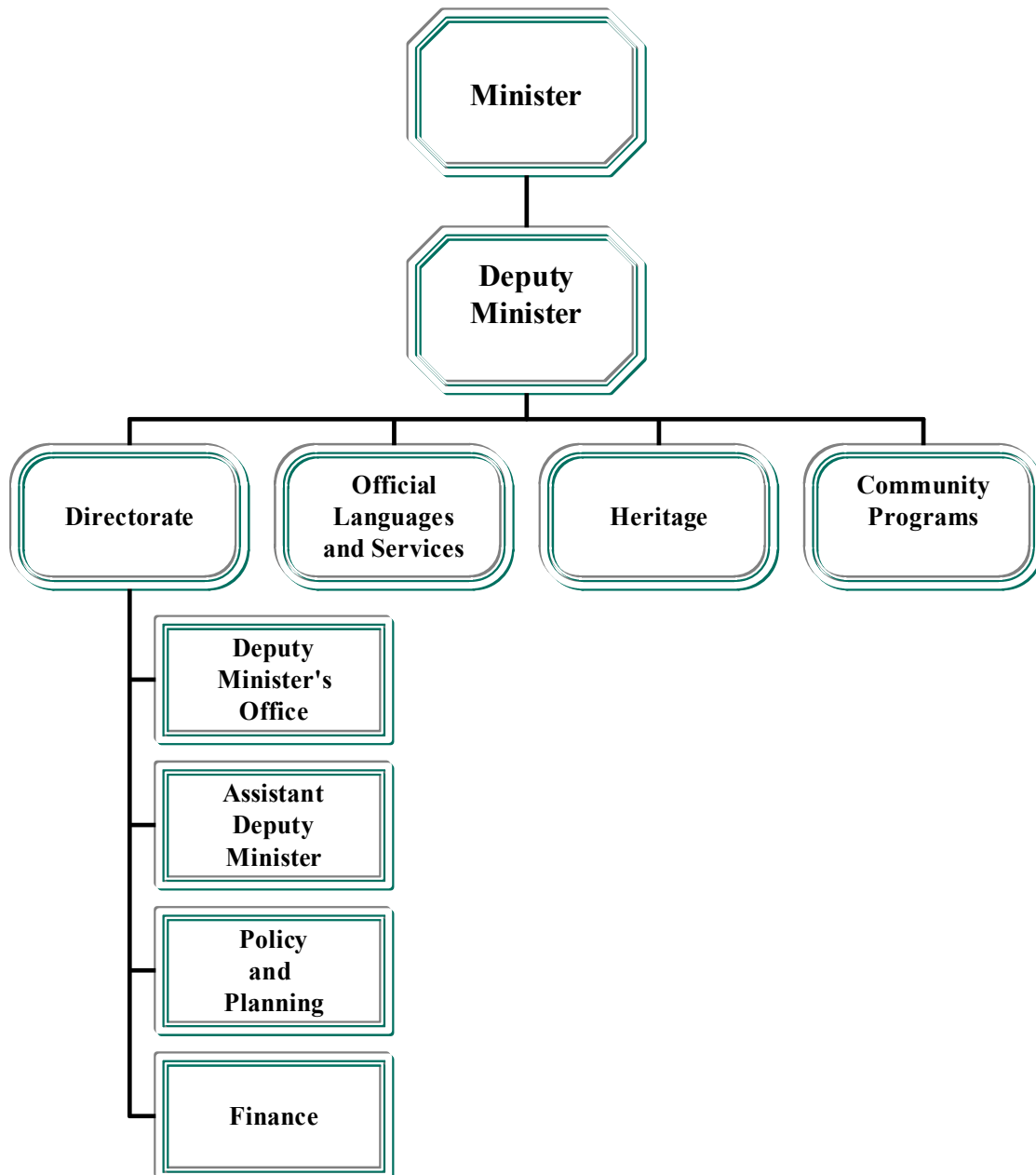


Jack Anawak
Minister

Leona Aglukkaq
Deputy Minister

Anthony Saez
Assistant Deputy Minister

ACCOUNTING STRUCTURE CHART



ᐃᐱᑲᑦᑲᑦᑲᑦᑲᑦᑲᑦ ᐃᑲᑦᑲᑦᑲᑦᑲᑦ
DETAIL OF EXPENDITURES

		ᐃᑲᑦᑲᑦᑲᑦᑲᑦᑲᑦ ᐃᑲᑦᑲᑦᑲᑦᑲᑦᑲᑦ	ᐃᑲᑦᑲᑦᑲᑦᑲᑦᑲᑦ ᐃᑲᑦᑲᑦᑲᑦᑲᑦᑲᑦᑲᑦ	ᐃᑲᑦᑲᑦᑲᑦᑲᑦᑲᑦ ᐃᑲᑦᑲᑦᑲᑦᑲᑦᑲᑦᑲᑦ
		2003-2004 Capital Estimates (\$000)	2002-2003 Revised Estimates (\$000)	2002-2003 Capital Estimates (\$000)
ᐃᑲᑦᑲᑦᑲᑦᑲᑦᑲᑦ	Capital Expenditures			
ᑲᑦᑲᑦᑲᑦᑲᑦᑲᑦ ᐃᑲᑦᑲᑦᑲᑦᑲᑦ	Grants and Contributions	785	535	535
ᐃᑲᑦᑲᑦᑲᑦᑲᑦᑲᑦ ᐱᑦᑲᑦᑲᑦᑲᑦ	Tangible Assets	250	-	-
ᑲᑦᑲᑦᑲᑦᑲᑦᑲᑦᑲᑦ ᑲᑦᑲᑦᑲᑦᑲᑦᑲᑦ ᐃᑲᑦᑲᑦᑲᑦᑲᑦ	Computer Hardware and Software	-	-	-
ᑲᑦᑲᑦᑲᑦᑲᑦᑲᑦᑲᑦ ᐃᑲᑦᑲᑦᑲᑦᑲᑦᑲᑦ	Total Capital Expenditures	1,035	535	535

ᐃᑦᑲᑦᑲᑦᑲᑦᑲᑦ
DIRECTORATE

ᐱᑦᑲᑦᑲᑦᑲᑦᑲᑦ ᐃᑦᑲᑦᑲᑦᑲᑦᑲᑦ Project Number	ᐃᑦᑲᑦᑲᑦᑲᑦᑲᑦ Detail of Capital	ᐃᑦᑲᑦᑲᑦᑲᑦᑲᑦ ᐃᑦᑲᑦᑲᑦᑲᑦᑲᑦ 2003-2004 Capital Estimates (\$000)	ᐃᑦᑲᑦᑲᑦᑲᑦᑲᑦ ᐃᑦᑲᑦᑲᑦᑲᑦᑲᑦ 2002-2003 Prior Year Cost (\$000)	ᐃᑦᑲᑦᑲᑦᑲᑦᑲᑦ ᐃᑦᑲᑦᑲᑦᑲᑦᑲᑦ 2004-2008 Capital Plan (\$000)
ᐃᑦᑲᑦᑲᑦᑲᑦᑲᑦ ᐱᑦᑲᑦᑲᑦᑲᑦ				
Tangible Assets				
ᑦᑲᑦᑲᑦᑲᑦᑲᑦ Qikiqtaaluk Region				
ᐃᑦᑲᑦᑲᑦᑲᑦᑲᑦ Iqaluit				
508013	ᐃᑦᑲᑦᑲᑦᑲᑦᑲᑦ ᐃᑦᑲᑦᑲᑦᑲᑦᑲᑦ ᐱᑦᑲᑦᑲᑦᑲᑦᑲᑦ Office Furniture and Equipment	250	-	-
ᐃᑦᑲᑦᑲᑦᑲᑦᑲᑦ ᑦᑲᑦᑲᑦᑲᑦᑲᑦ Total Qikiqtaaluk Region		250	-	-
ᑲᑦᑲᑦᑲᑦᑲᑦᑲᑦ ᐃᑦᑲᑦᑲᑦᑲᑦᑲᑦ ᐱᑦᑲᑦᑲᑦᑲᑦᑲᑦ		250	-	-
Total Tangible Assets				

ᐱᑦᑲᑦᑲᑦᑲᑦᑲᑦ
HERITAGE

ᐱᑦᑲᑦᑲᑦᑲᑦᑲᑦ ᐱᑦᑲᑦᑲᑦᑲᑦᑲᑦ Project Number	ᐱᑦᑲᑦᑲᑦᑲᑦᑲᑦ Detail of Capital	ᐱᑦᑲᑦᑲᑦᑲᑦᑲᑦ ᐱᑦᑲᑦᑲᑦᑲᑦᑲᑦ 2003-2004 Capital Estimates (\$000)	ᐱᑦᑲᑦᑲᑦᑲᑦᑲᑦ ᐱᑦᑲᑦᑲᑦᑲᑦᑲᑦ 2002-2003 Prior Year Cost (\$000)	ᐱᑦᑲᑦᑲᑦᑲᑦᑲᑦ ᐱᑦᑲᑦᑲᑦᑲᑦᑲᑦ 2004-2008 Capital Plan (\$000)
ᐱᑦᑲᑦᑲᑦᑲᑦᑲᑦ ᐱᑦᑲᑦᑲᑦᑲᑦᑲᑦ Grants and Contributions				
ᐱᑦᑲᑦᑲᑦᑲᑦᑲᑦᑲᑦ Headquarters Region				
ᐱᑦᑲᑦᑲᑦᑲᑦᑲᑦᑲᑦ Nunavut - Various				
508010	ᐱᑦᑲᑦᑲᑦᑲᑦᑲᑦᑲᑦ ᐱᑦᑲᑦᑲᑦᑲᑦᑲᑦᑲᑦ Community Heritage Centers	263	268	645
ᐱᑦᑲᑦᑲᑦᑲᑦᑲᑦᑲᑦ ᐱᑦᑲᑦᑲᑦᑲᑦᑲᑦᑲᑦ Total Headquarters Region		263	-	-
ᐱᑦᑲᑦᑲᑦᑲᑦᑲᑦᑲᑦ ᐱᑦᑲᑦᑲᑦᑲᑦᑲᑦᑲᑦ Total Grants and Contributions		263	-	-

ᓄᑦᑦᑦ ᐱᑦᑲᑦᑲᑦᑲᑦᑲᑦ
COMMUNITY PROGRAMS

ᐱᑦᑲᑦᑲᑦᑲᑦᑲᑦ ᐱᑦᑲᑦᑲᑦᑲᑦᑲᑦ Project Number	ᐱᑦᑲᑦᑲᑦᑲᑦᑲᑦ Detail of Capital	ᐱᑦᑲᑦᑲᑦᑲᑦᑲᑦ ᐱᑦᑲᑦᑲᑦᑲᑦᑲᑦ 2003-2004 Capital Estimates (\$000)	ᐱᑦᑲᑦᑲᑦᑲᑦᑲᑦ ᐱᑦᑲᑦᑲᑦᑲᑦᑲᑦ 2002-2003 Prior Year Cost (\$000)	ᐱᑦᑲᑦᑲᑦᑲᑦᑲᑦ ᐱᑦᑲᑦᑲᑦᑲᑦᑲᑦ 2004-2008 Capital Plan (\$000)
ᐱᑦᑲᑦᑲᑦᑲᑦᑲᑦ ᐱᑦᑲᑦᑲᑦᑲᑦᑲᑦ Grants and Contributions				
ᐱᑦᑲᑦᑲᑦᑲᑦᑲᑦᑲᑦᑲᑦ Headquarters Region				
ᓄᑦᑦᑦ - ᓄᑦᑦᑦᑲᑦᑲᑦ Nunavut - Various				
508011	ᓄᑦᑦᑦ ᐃᑦᑲᑦᑲᑦᑲᑦᑲᑦ ᑲᑦᑲᑦᑲᑦᑲᑦ Community Youth Centers	261	134	644
508012	ᓄᑦᑦᑦ ᐃᑦᑲᑦᑲᑦᑲᑦᑲᑦ Community Elders Centers	261	133	641
ᑲᑦᑲᑦᑲᑦᑲᑦ ᐱᑦᑲᑦᑲᑦᑲᑦᑲᑦᑲᑦᑲᑦ Total Headquarters Region		522	-	-
ᑲᑦᑲᑦᑲᑦᑲᑦ ᐱᑦᑲᑦᑲᑦᑲᑦᑲᑦ ᐱᑦᑲᑦᑲᑦᑲᑦᑲᑦ Total Grants and Contributions		522	-	-

