

ᐃᑖᐱᖃᐱᑦᑎᐱᑦᑕᑦ



SUSTAINABLE  
DEVELOPMENT

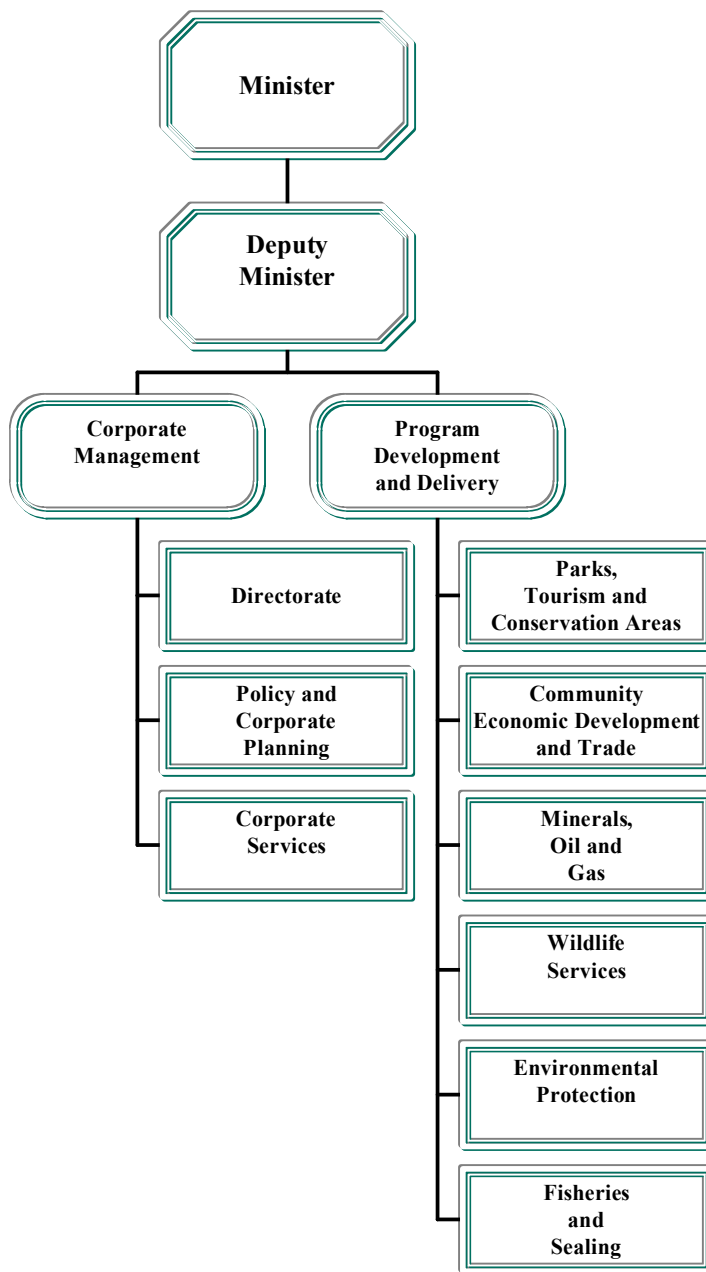


Olayuk Akesuk  
Minister

Alex Campbell  
Deputy Minister

Rosemary Keenainak  
Assistant Deputy Minister

## ACCOUNTING STRUCTURE CHART





ᐃᐱᑦᐱᓐᓂᑦᐱᓐᓂᑦᐅᑦ ᐃᓕᓂᑦᐱᓐᓂᑦ  
DETAIL OF EXPENDITURES

	ᐃᓕᓂᑦᐱᓐᓂᑦ ᐃᓕᓂᑦᐱᓐᓂᑦ	ᐃᓕᓂᑦᐱᓐᓂᑦ ᐃᓕᓂᑦᐱᓐᓂᑦ	ᐃᓕᓂᑦᐱᓐᓂᑦ ᐃᓕᓂᑦᐱᓐᓂᑦ
	2003-2004 Capital Estimates (\$000)	2002-2003 Revised Estimates (\$000)	2002-2003 Capital Estimates (\$000)
ᐃᓕᓂᑦᐱᓐᓂᑦ ᐃᓕᓂᑦᐱᓐᓂᑦ	<b>Capital Expenditures</b>		
ᓂᐃᐅᑦᐱᓐᓂᑦ ᐃᓕᓂᑦᐱᓐᓂᑦ	25	250	250
ᐃᓕᓂᑦᐱᓐᓂᑦ ᐱᓂᑦᐱᓐᓂᑦ	2,495	4,146	2,220
ᐱᓂᑦᐱᓐᓂᑦ ᓂᐃᐅᑦᐱᓐᓂᑦ ᐃᓕᓂᑦᐱᓐᓂᑦ	-	-	-
<b>ᐃᓕᓂᑦᐱᓐᓂᑦ ᐃᓕᓂᑦᐱᓐᓂᑦ</b>	<b>2,520</b>	<b>4,396</b>	<b>2,470</b>



ᐱᑕᑦᑎᑦ ᐱᑕᑦᑎᑦᑑᑦ ᑕᑦᑕᑦᑑᑦ  
PROGRAM DEVELOPMENT AND DELIVERY

ᐱᑕᑦᑎᑦ ᐱᑕᑦᑎᑦ ᑕᑦᑕᑦᑑᑦ	ᐱᑭᑦᑎᑦᑑᑦ ᑕᑦᑕᑦᑑᑦ	ᐱᑭᑦᑎᑦᑑᑦ ᐱᑕᑦᑎᑦᑑᑦ	ᐱᑕᑦᑎᑦᑑᑦ ᐱᑕᑦᑎᑦᑑᑦ	ᐱᑭᑦᑎᑦᑑᑦ ᐱᑕᑦᑎᑦᑑᑦ
Project Number	Detail of Capital	2003-2004 Capital Estimates (\$000)	2002-2003 Prior Year Cost (\$000)	2004-2008 Capital Plan (\$000)
<b>ᑕᑦᑕᑦᑑᑦ ᐱᑕᑦᑎᑦᑑᑦ</b>				
<b>Grants and Contributions</b>				
ᐱᑕᑦᑎᑦᑑᑦ ᑕᑦᑕᑦᑑᑦ				
<i>Headquarters Region</i>				
511013	>ᑕᑦᑕᑦᑕᑦᑎᑦᑑᑦ ᑕᑦᑕᑦᑕᑦᑕᑦᑕᑦᑕᑦᑕᑦ / ᑕᑦᑕᑦᑕᑦᑕᑦᑕᑦᑕᑦᑕᑦᑕᑦ ᑕᑦᑕᑦᑕᑦᑕᑦᑕᑦᑕᑦᑕᑦᑕᑦᑕᑦᑕᑦᑕᑦ Tourism Exhibit/Booth Replacement	25	75	75
ᑕᑦᑕᑦᑕᑦᑕᑦ ᐱᑕᑦᑎᑦᑑᑦ ᑕᑦᑕᑦᑕᑦᑕᑦᑕᑦᑕᑦᑕᑦᑕᑦ		25	-	-
ᑕᑦᑕᑦᑕᑦᑕᑦ ᐱᑕᑦᑎᑦᑑᑦ ᐱᑕᑦᑎᑦᑑᑦ ᐱᑕᑦᑎᑦᑑᑦ		25	-	-
<b>Total Grants and Contributions</b>				

### Α'Α'Α'Α' Α'Α'Α'Α'Α' Α'Α'Α'Α'Α'Α'

## PROGRAM DEVELOPMENT AND DELIVERY

Α'Α'Α'Α'Α'Α' Α'Α'Α'Α'Α'	ΑΠΔ'Α'Α'Α'Α'Α'	ΑΠΔ'Α'Α'Α' Α'Α'Α'Α'	Α'Α'Α'Α'Α'Α'Α' ΑΠ'Α'Α'Α'Α'Α'	ΑΠΔ'Α'Α'Α' Α'Α'Α'Α'
Project Number	Detail of Capital	2003-2004 Capital Estimates (\$000)	Prior Year Cost (\$000)	2004-2008 Capital Plan (\$000)
<b>Α'Α'Α'Α' Α'Α'Α'</b> <b>Tangible Assets</b>				
Α'Α'Α'Α'Α'				
<b>Headquarters Region</b>				
Α'Α'Α'Α' - Α'Α'Α'Α'				
<b>Nunavut - Various</b>				
511010	Α'Α'Α'Α' Δ'Α'Α'Α'Α'Α'Α' - Α'Α'Α'Α'Α'Α'Α'	75	100	300
511011	Α'Α'Α'Α'Α'Α'Α'/Α'Α'Α'Α'Α'Α'Α'/Α'Α'Α'Α'Α'Α'Α' Α'Α'Α'Α'Α'Α'Α'	75	75	300
500246	Α'Α'Α'Α' Α'Α'Α'Α'Α'Α'Α'Α' Α'Α'Α'Α'Α'Α'Α'	75	75	300
511014	Α'Α'Α'Α'Α'Α'Α'Α'	200	254	520
511009	Α'Α'Α'Α'Α'Α'Α' Α'Α'Α'Α'Α' Α'Α'Α'Α'Α'Α'Α'Α'	55	-	710
<b>Α'Α'Α'Α' Α'Α'Α'Α'Α'Α'Α' Total Headquarters Region</b>		<b>480</b>	<b>-</b>	<b>-</b>
<b>Α'Α'Α'Α'Α'</b>				
<b>Qikiqtaaluk Region</b>				
Α'Α'Α'Α'Α'Α'				
<b>Clyde River</b>				
511001	Α'Α'Α'Α'Α'Α' Α'Α'Α'Α'Α'Α'Α'Α' Α'Α'Α'Α'Α'Α'Α'Α'	50	42	235
Α'Α'Α'Α'Α'Α'				
<b>Grise Fiord</b>				
511002	Α'Α'Α'Α'Α'Α' Α'Α'Α'Α'Α'Α'Α'Α'Α'	575	390	50





ᐱᑲᐱᑦᑲᑯᐱᑦ ᐱᑲᑦᑲᑯᐱᑦᑲᑯᐱᑦ ᑲᐱᐱᑦᑲᑯᐱᑦ  
 PROGRAM DEVELOPMENT AND DELIVERY

ᐱᑲᐱᑦᑲᑯᐱᑦ ᑲᐱᐱᑦᑲᑯᐱᑦ Project Number	ᐃᑯᐱᑦᑲᑯᐱᑦᑲᑯᐱᑦ Detail of Capital	ᐃᑯᐱᑦᑲᑯᐱᑦ ᐃᑯᐱᑦᑲᑯᐱᑦ 2003-2004 Capital Estimates (\$000)	ᐃᑯᐱᑦᑲᑯᐱᑦ ᐃᑯᐱᑦᑲᑯᐱᑦ 2002-2003 Prior Year Cost (\$000)	ᐃᑯᐱᑦᑲᑯᐱᑦ ᐃᑯᐱᑦᑲᑯᐱᑦ 2004-2008 Capital Plan (\$000)
<b>ᐃᑯᐱᑦᑲᑯᐱᑦ ᐱᑲᐱᑦᑲᑯᐱᑦ Tangible Assets</b>				
<b>ᑲᐱᐱᑦᑲᑯᐱᑦ</b> Resolute Bay				
511030	ᑲᐱᐱᑦᑲᑯᐱᑦ ᑲᐱᐱᑦᑲᑯᐱᑦ Axel Heiberg Island	50	-	70
<b>ᑲᐱᐱᑦᑲᑯᐱᑦ</b> Sanikiluaq				
511020	ᑲᐱᐱᑦᑲᑯᐱᑦ ᑲᐱᐱᑦᑲᑯᐱᑦ Wildlife Office/Garage	50	340	-
<b>ᑲᐱᐱᑦᑲᑯᐱᑦ - ᐃᑯᐱᑦᑲᑯᐱᑦ</b> Qikiqtaaluk - Various				
511000	ᐃᑯᐱᑦᑲᑯᐱᑦ ᐱᑲᐱᑦᑲᑯᐱᑦ Mobile Equipment	75	75	400
<b>ᑲᐱᐱᑦᑲᑯᐱᑦ ᑲᐱᐱᑦᑲᑯᐱᑦ Total Qikiqtaaluk Region</b>		<b>1,295</b>	-	-
<b>ᑲᐱᐱᑦᑲᑯᐱᑦ</b> Kivalliq Region				
<b>ᑲᐱᐱᑦᑲᑯᐱᑦ</b> Baker Lake				
500078	ᑲᐱᐱᑦᑲᑯᐱᑦ ᑲᐱᐱᑦᑲᑯᐱᑦ ᐃᑯᐱᑦᑲᑯᐱᑦ ᐃᑯᐱᑦᑲᑯᐱᑦ Thelon and Kazan Heritage Sites	35	221	100
<b>ᑲᐱᐱᑦᑲᑯᐱᑦ</b> Coral Harbour				
500267	ᑲᐱᐱᑦᑲᑯᐱᑦ ᑲᐱᐱᑦᑲᑯᐱᑦ ᐃᑯᐱᑦᑲᑯᐱᑦ ᑲᐱᐱᑦᑲᑯᐱᑦ Attraction Development Coral Harbour	75	100	320
<b>ᑲᐱᐱᑦᑲᑯᐱᑦ</b> Rankin Inlet				
500087	ᑲᐱᐱᑦᑲᑯᐱᑦ ᑲᐱᐱᑦᑲᑯᐱᑦ ᑲᐱᐱᑦᑲᑯᐱᑦ Ijiraliq Park/Meliadine	75	180	135
<b>ᑲᐱᐱᑦᑲᑯᐱᑦ - ᐃᑯᐱᑦᑲᑯᐱᑦ</b> Kivalliq - Various				
511005	ᐃᑯᐱᑦᑲᑯᐱᑦ ᐱᑲᐱᑦᑲᑯᐱᑦ Mobile Equipment	40	40	240
<b>ᑲᐱᐱᑦᑲᑯᐱᑦ ᑲᐱᐱᑦᑲᑯᐱᑦ Total Kivalliq Region</b>		<b>225</b>	-	-



