

ᐃᓕᓐᓂᐱᓖᓕᓕᓂᓴᓐ



EDUCATION

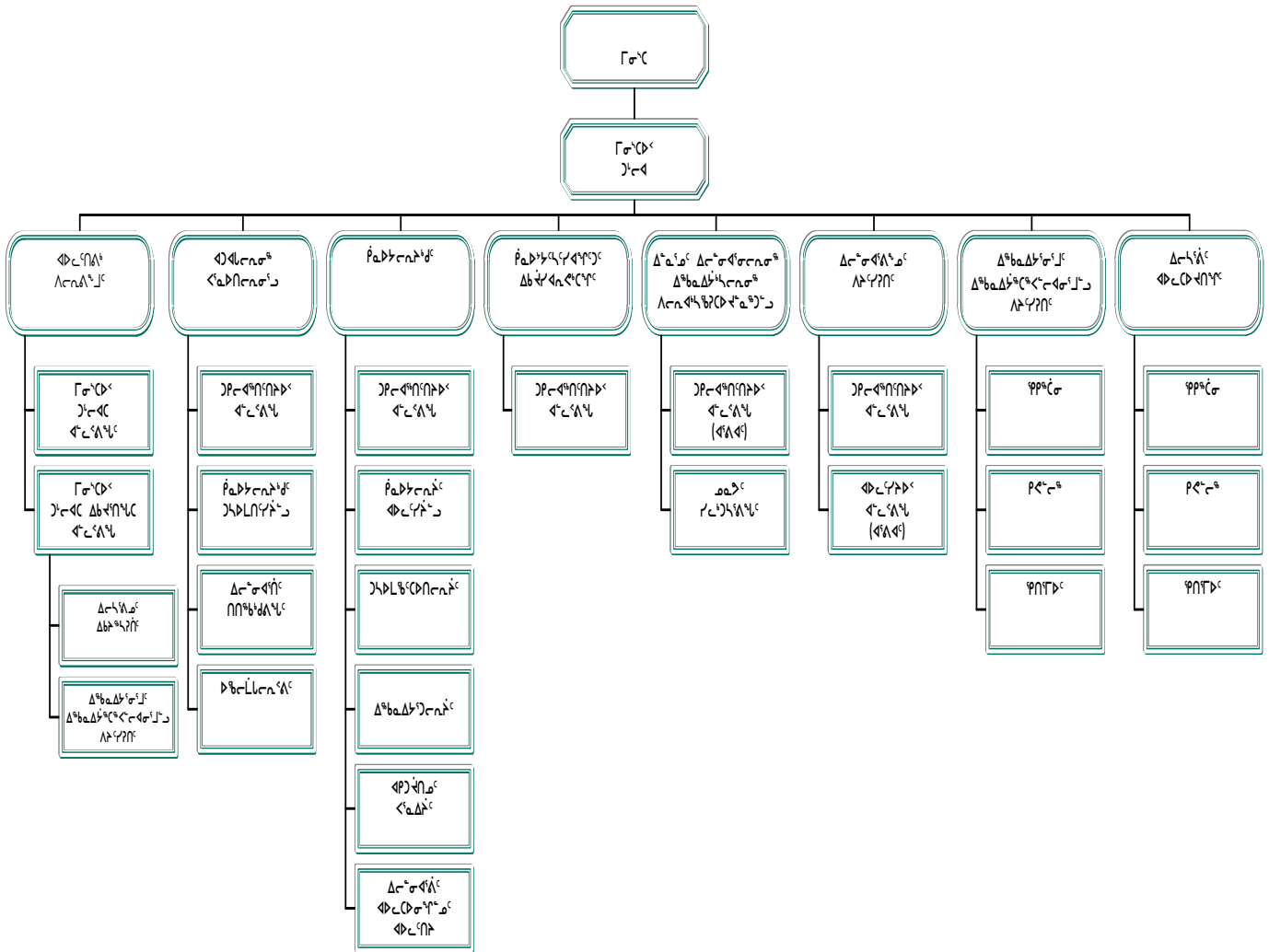
ᐱᓕ ᓃᓕᓕᓐ
 ᓃᓕᓐ

ᐃᓕᓐᓖᓕᓕᓕᓐ ᓖᓕᓕᓐ
 ᓃᓕᓐᓖᓕᓕᓕᓐ ᐃᓕᓐᓖᓕᓕᓕᓐ

ᓖᓕ ᓕᓐ
 ᓃᓕᓐᓖᓕᓕᓕᓐ ᓖᓕᓐ

ᓖᓕ ᓖᓐ
 ᓃᓕᓐᓖᓕᓕᓕᓐ ᐃᓕᓐᓖᓕᓕᓕᓐ

ᓃᐃᓚᓕᓕᓐᓖᓕᓕᓐ ᐃᓕᓐᓖᓕᓕᓕᓐ



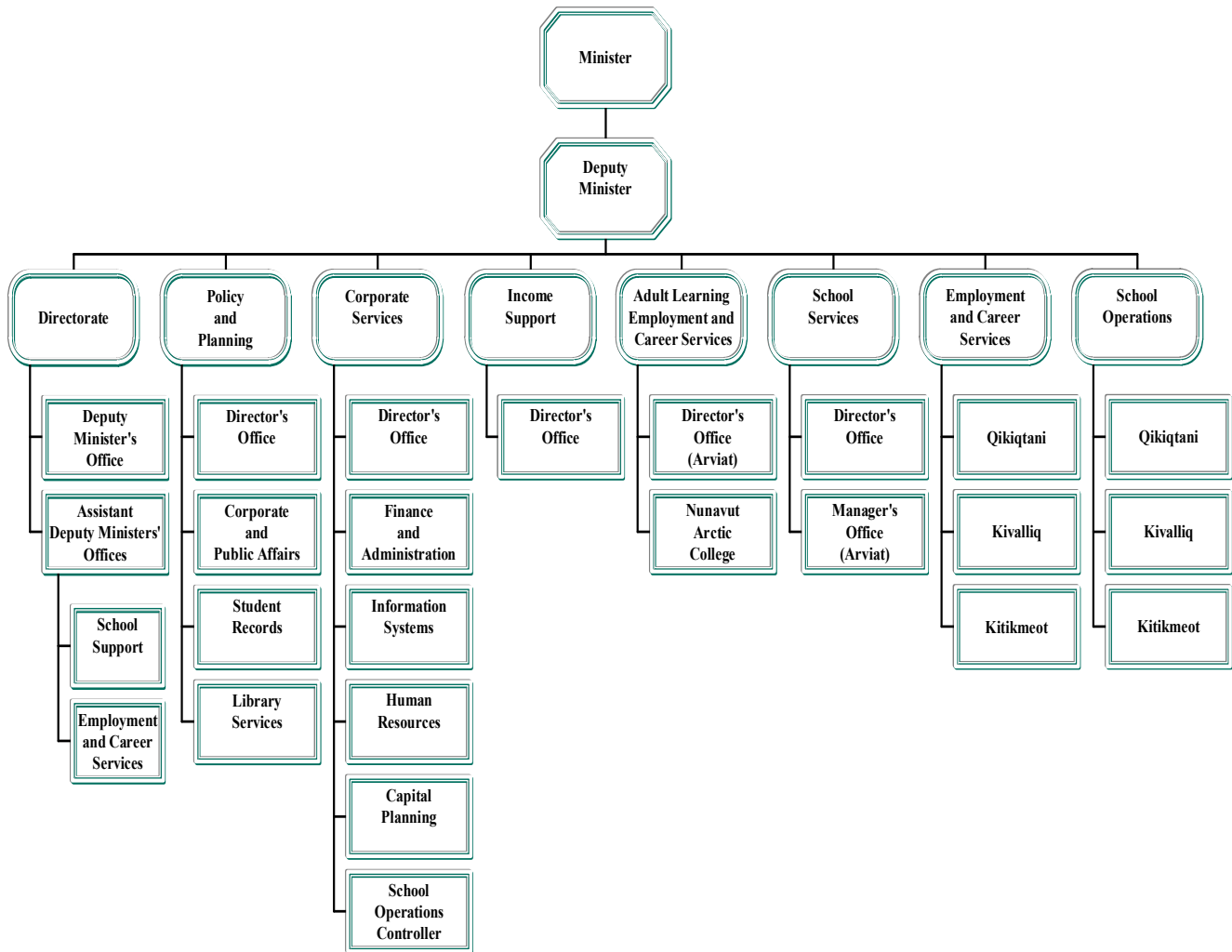
Peter Kilabuk
 Minister

Naullaq Arnaquq
 Assistant Deputy Minister

Tom Rich
 Deputy Minister

Kathy Okpik
 Assistant Deputy Minister

ACCOUNTING STRUCTURE CHART



ᑦᑦᑦᑦᑦᑦᑦᑦᑦᑦ ᐸᑦᑦᑦᑦᑦᑦ
DETAIL OF EXPENDITURES

		ᐸᑦᑦᑦᑦᑦᑦᑦᑦ ᐸᑦᑦᑦᑦᑦᑦᑦᑦᑦ	ᐸᑦᑦᑦᑦᑦᑦᑦᑦᑦ ᐸᑦᑦᑦᑦᑦᑦᑦᑦᑦᑦᑦᑦᑦᑦ	ᐸᑦᑦᑦᑦᑦᑦᑦᑦᑦ ᐸᑦᑦᑦᑦᑦᑦᑦᑦᑦᑦᑦᑦᑦᑦ
		2003-2004 Capital Estimates (\$000)	2002-2003 Revised Estimates (\$000)	2002-2003 Capital Estimates (\$000)
ᐸᑦᑦᑦᑦᑦᑦᑦᑦᑦ	ᐸᑦᑦᑦᑦᑦᑦᑦᑦᑦ	Capital Expenditures		
ᑦᑦᑦᑦᑦᑦᑦᑦᑦᑦ ᐸᑦᑦᑦᑦᑦᑦᑦᑦᑦ ᐸᑦᑦᑦᑦᑦᑦᑦᑦᑦ	Grants and Contributions	-	-	-
ᐸᑦᑦᑦᑦᑦᑦᑦᑦᑦ ᐸᑦᑦᑦᑦᑦᑦᑦᑦᑦ	Tangible Assets	23,985	23,451	19,500
ᑦᑦᑦᑦᑦᑦᑦᑦᑦᑦ ᑦᑦᑦᑦᑦᑦᑦᑦᑦᑦ ᐸᑦᑦᑦᑦᑦᑦᑦᑦᑦᑦ ᑦᑦᑦᑦᑦᑦᑦᑦᑦᑦᑦ	Computer Hardware and Software	-	-	-
ᑦᑦᑦᑦᑦᑦᑦᑦᑦᑦ ᐸᑦᑦᑦᑦᑦᑦᑦᑦᑦᑦ ᐸᑦᑦᑦᑦᑦᑦᑦᑦᑦᑦ	Total Capital Expenditures	23,985	23,451	19,500

ᑕᑦᓂᑦᓂᑦᓂᑦᓂᑦ
CORPORATE SERVICES

ᐱᑦᓂᑦᓂᑦᓂᑦᓂᑦ ᐳᑦᓂᑦᓂᑦᓂᑦᓂᑦ Project Number	ᐳᑦᓂᑦᓂᑦᓂᑦᓂᑦ Detail of Capital	ᐳᑦᓂᑦᓂᑦᓂᑦᓂᑦ ᐳᑦᓂᑦᓂᑦᓂᑦᓂᑦ 2003-2004 Capital Estimates (\$000)	ᐳᑦᓂᑦᓂᑦᓂᑦᓂᑦᓂᑦ ᐳᑦᓂᑦᓂᑦᓂᑦᓂᑦᓂᑦ 2002-2003 Prior Year Cost (\$000)	ᐳᑦᓂᑦᓂᑦᓂᑦᓂᑦᓂᑦ ᐳᑦᓂᑦᓂᑦᓂᑦᓂᑦ 2004-2008 Capital Plan (\$000)
ᐳᑦᓂᑦᓂᑦᓂᑦᓂᑦᓂᑦ Tangible Assets				
ᐳᑦᓂᑦᓂᑦᓂᑦᓂᑦᓂᑦ Headquarters Region				
ᐳᑦᓂᑦᓂᑦᓂᑦᓂᑦᓂᑦ Nunavut - Various				
509033	ᐱᑕᑦᓂᑦᓂᑦᓂᑦᓂᑦᓂᑦ Minor Capital	300	-	1,200
ᐳᑦᓂᑦᓂᑦᓂᑦᓂᑦᓂᑦᓂᑦ Total Headquarters Region		300	-	-
ᐳᑦᓂᑦᓂᑦᓂᑦᓂᑦᓂᑦ Qikiqtaaluk Region				
ᐳᑦᓂᑦᓂᑦᓂᑦᓂᑦᓂᑦ Cape Dorset				
509026	ᐳᑦᓂᑦᓂᑦᓂᑦᓂᑦᓂᑦᓂᑦ NAC Community Learning Centre	1,000	50	900
ᐳᑦᓂᑦᓂᑦᓂᑦᓂᑦᓂᑦ Clyde River				
500095	ᐳᑦᓂᑦᓂᑦᓂᑦᓂᑦᓂᑦᓂᑦ Quluq School Addition	200	2,520	-
ᐳᑦᓂᑦᓂᑦᓂᑦᓂᑦᓂᑦ Hall Beach				
509002	ᐳᑦᓂᑦᓂᑦᓂᑦᓂᑦᓂᑦᓂᑦ Arnaqjuaq School Addition	2,900	2,835	50
ᐳᑦᓂᑦᓂᑦᓂᑦᓂᑦᓂᑦ Iqaluit				
509035	ᐳᑦᓂᑦᓂᑦᓂᑦᓂᑦᓂᑦᓂᑦ Aqsarniit School Addition	455	-	7,575
509036	ᐳᑦᓂᑦᓂᑦᓂᑦᓂᑦᓂᑦᓂᑦ Inuksuk High School Renovation	54	-	19,005
ᐳᑦᓂᑦᓂᑦᓂᑦᓂᑦᓂᑦ Pond Inlet				
500104	ᐳᑦᓂᑦᓂᑦᓂᑦᓂᑦᓂᑦᓂᑦ Ulaajuk School Addition	50	1,491	-

ᐱᑦᓂᑦᓂᑦᓂᑦᓂᑦ
CORPORATE SERVICES

ᐱᑦᓂᑦᓂᑦᓂᑦᓂᑦ ᐳᑦᓂᑦᓂᑦᓂᑦᓂᑦ	ᐳᑦᓂᑦᓂᑦᓂᑦᓂᑦ Detail of Capital	ᐳᑦᓂᑦᓂᑦᓂᑦᓂᑦ ᐳᑦᓂᑦᓂᑦᓂᑦᓂᑦ 2003-2004 Capital Estimates (\$000)	ᐳᑦᓂᑦᓂᑦᓂᑦᓂᑦ ᐳᑦᓂᑦᓂᑦᓂᑦᓂᑦ 2002-2003 Prior Year Cost (\$000)	ᐳᑦᓂᑦᓂᑦᓂᑦᓂᑦ ᐳᑦᓂᑦᓂᑦᓂᑦᓂᑦ 2004-2008 Capital Plan (\$000)
ᐳᑦᓂᑦᓂᑦᓂᑦᓂᑦ ᐱᑦᓂᑦᓂᑦᓂᑦᓂᑦ Tangible Assets				
ᓂᐳᑦᓂᑦᓂᑦᓂᑦ Resolute Bay				
500209	ᓂᓂᑦᓂᑦᓂᑦᓂᑦ ᐳᑦᓂᑦᓂᑦᓂᑦᓂᑦ ᐳᑦᓂᑦᓂᑦᓂᑦᓂᑦ Qarmartalik School Addition	1,850	1,258	50
ᓂᓂᑦᓂᑦᓂᑦᓂᑦ Sanikiluaq				
509015	ᓂᓂᑦᓂᑦᓂᑦᓂᑦ ᐳᑦᓂᑦᓂᑦᓂᑦᓂᑦ New School	650	20	-
ᓂᓂᑦᓂᑦᓂᑦᓂᑦ ᓂᓂᑦᓂᑦᓂᑦᓂᑦ Total Qikiqtaaluk Region		7,159	-	-
ᓂᓂᑦᓂᑦᓂᑦᓂᑦ Kivalliq Region				
ᐳᑦᓂᑦᓂᑦᓂᑦᓂᑦ Arviat				
509032	ᓂᓂᑦᓂᑦᓂᑦᓂᑦ ᐳᑦᓂᑦᓂᑦᓂᑦᓂᑦ New School	7,303	605	6,555
ᓂᓂᑦᓂᑦᓂᑦᓂᑦ Baker Lake				
500210	ᓂᓂᑦᓂᑦᓂᑦᓂᑦ ᐳᑦᓂᑦᓂᑦᓂᑦᓂᑦ Territorial Library	1,050	242	1,475
509024	ᐳᑦᓂᑦᓂᑦᓂᑦᓂᑦ ᐳᑦᓂᑦᓂᑦᓂᑦᓂᑦ ᐳᑦᓂᑦᓂᑦᓂᑦᓂᑦ Community Learning Centre Replacement	25	1,935	-
500211	ᓂᓂᑦᓂᑦᓂᑦᓂᑦ ᐳᑦᓂᑦᓂᑦᓂᑦᓂᑦ - ᓂᓂᑦᓂᑦᓂᑦᓂᑦ ᐳᑦᓂᑦᓂᑦᓂᑦᓂᑦ New School - Jonah Amitnaaq Replacement	1,225	6,060	-
ᓂᓂᑦᓂᑦᓂᑦᓂᑦ Rankin Inlet				
509009	ᐳᑦᓂᑦᓂᑦᓂᑦᓂᑦ ᐳᑦᓂᑦᓂᑦᓂᑦᓂᑦ ᐳᑦᓂᑦᓂᑦᓂᑦᓂᑦ NAC Student Accommodation	150	-	50
ᓂᓂᑦᓂᑦᓂᑦᓂᑦ Whale Cove				
500213	ᐳᑦᓂᑦᓂᑦᓂᑦᓂᑦ ᐳᑦᓂᑦᓂᑦᓂᑦᓂᑦ ᐳᑦᓂᑦᓂᑦᓂᑦᓂᑦ Inuglak School Addition	2,200	225	1,460
ᓂᓂᑦᓂᑦᓂᑦᓂᑦ ᓂᓂᑦᓂᑦᓂᑦᓂᑦ Total Kivalliq Region		11,953	-	-

ᑎᑦᑦᑦᑦ ᐱᑦᑦᑦᑦᑦ
CORPORATE SERVICES

ᐱᑦᑦᑦᑦᑦᑦᑦᑦ ᑦᑦᑦᑦᑦᑦ	ᐃᑦᑦᑦᑦᑦᑦᑦᑦ	ᐃᑦᑦᑦᑦᑦᑦᑦᑦ ᐃᑦᑦᑦᑦᑦᑦᑦᑦ	ᐃᑦᑦᑦᑦᑦᑦᑦᑦᑦ ᐃᑦᑦᑦᑦᑦᑦᑦᑦᑦ	ᐃᑦᑦᑦᑦᑦᑦᑦᑦᑦ ᐃᑦᑦᑦᑦᑦᑦᑦᑦᑦ
Project Number	Detail of Capital	2003-2004 Capital Estimates (\$000)	Prior Year Cost (\$000)	Capital Plan (\$000)
ᐃᑦᑦᑦᑦᑦᑦ ᐱᑦᑦᑦᑦ Tangible Assets				
<i>ᑦᑦᑦᑦᑦᑦᑦ</i> Kitikmeot Region				
ᐃᑦᑦᑦᑦᑦᑦᑦᑦᑦ Cambridge Bay				
509005	ᐃᑦᑦᑦᑦᑦᑦᑦᑦᑦ ᐃᑦᑦᑦᑦᑦᑦᑦᑦᑦ NAC Student Accommodation	2,250	210	2,600
ᐃᑦᑦᑦᑦᑦᑦᑦᑦᑦ Kugaaruk				
509030	ᐃᑦᑦᑦᑦᑦᑦᑦᑦᑦᑦ ᐃᑦᑦᑦᑦᑦᑦᑦᑦᑦᑦ Kugaardjuk High School Addition	2,298	3,691	50
ᑦᑦᑦᑦᑦᑦᑦ Kugluktuk				
500215	ᐃᑦᑦᑦᑦᑦᑦᑦᑦᑦᑦ ᐃᑦᑦᑦᑦᑦᑦᑦᑦᑦᑦ Kugluktuk High School Siding	25	1,866	-
ᑦᑦᑦᑦᑦᑦᑦ ᑦᑦᑦᑦᑦᑦᑦᑦ Total Kitikmeot Region		4,573	-	-
ᑦᑦᑦᑦᑦᑦᑦ ᐃᑦᑦᑦᑦᑦᑦᑦᑦ ᐃᑦᑦᑦᑦᑦᑦᑦᑦᑦᑦ Total Tangible Assets		23,985	-	-

