

ᐱᓕᓂᐱᓐᐱᓐ  
ᐱᓐᓂᐱᓐᓂᓐᓂᓐᓂᓐᓂᓐᓂᓐ  
ᐱᓂᓕᓂᓐᓂᓐ



HEALTH AND  
SOCIAL SERVICES

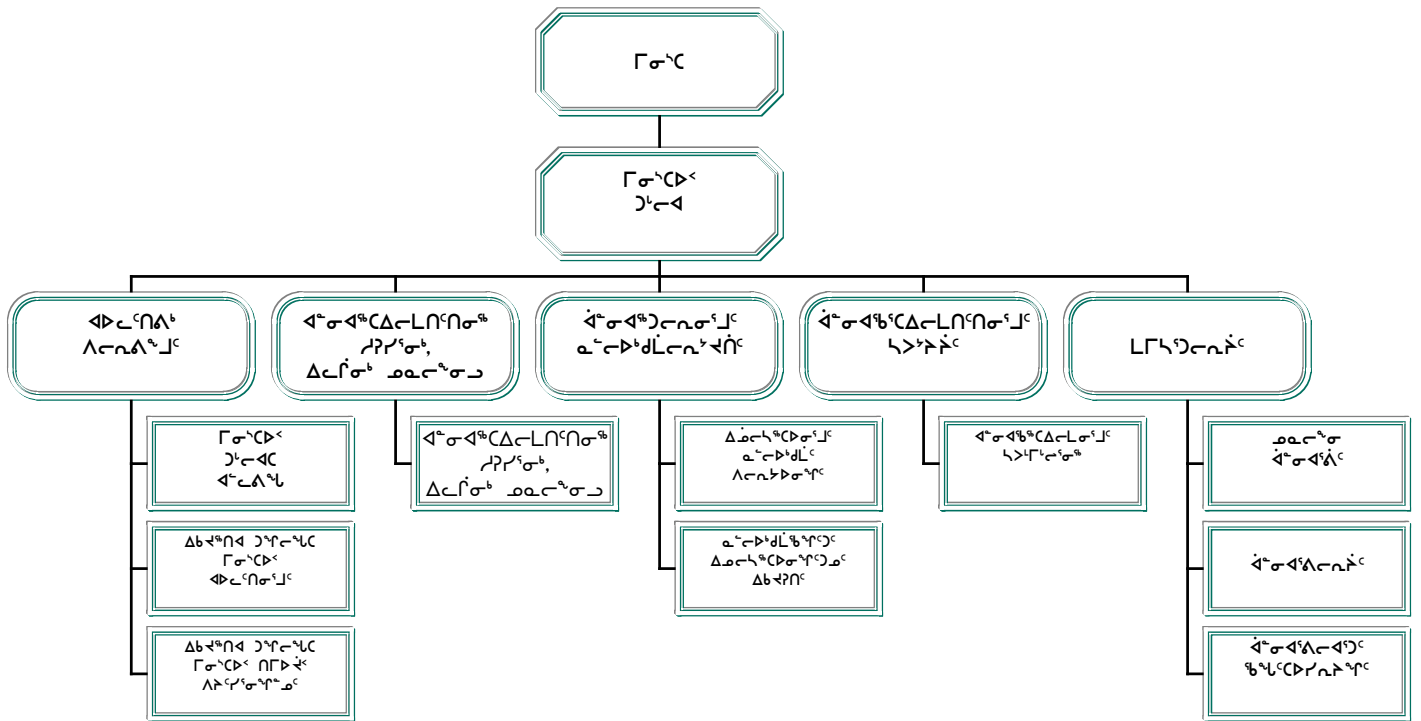
ᐱᓕᓂᐱᓪᐳᓪ ᐱᓕᓂᐱᓪᐳᓪ  
 ᐱᓕᓂᐱᓪᐳᓪ

ᐱᓕᓂᐱᓪᐳᓪ ᐱᓕᓂᐱᓪᐳᓪ  
 ᐱᓕᓂᐱᓪᐳᓪ ᐱᓕᓂᐱᓪᐳᓪ ᐱᓕᓂᐱᓪᐳᓪ

ᐱᓕᓂᐱᓪᐳᓪ ᐱᓕᓂᐱᓪᐳᓪ  
 ᐱᓕᓂᐱᓪᐳᓪ ᐱᓕᓂᐱᓪᐳᓪ

ᐱᓕᓂᐱᓪᐳᓪ ᐱᓕᓂᐱᓪᐳᓪ ᐱᓕᓂᐱᓪᐳᓪ  
 ᐱᓕᓂᐱᓪᐳᓪ ᐱᓕᓂᐱᓪᐳᓪ ᐱᓕᓂᐱᓪᐳᓪ ᐱᓕᓂᐱᓪᐳᓪ  
 ᐱᓕᓂᐱᓪᐳᓪ ᐱᓕᓂᐱᓪᐳᓪ ᐱᓕᓂᐱᓪᐳᓪ ᐱᓕᓂᐱᓪᐳᓪ

ᐱᓕᓂᐱᓪᐳᓪ ᐱᓕᓂᐱᓪᐳᓪ ᐱᓕᓂᐱᓪᐳᓪ



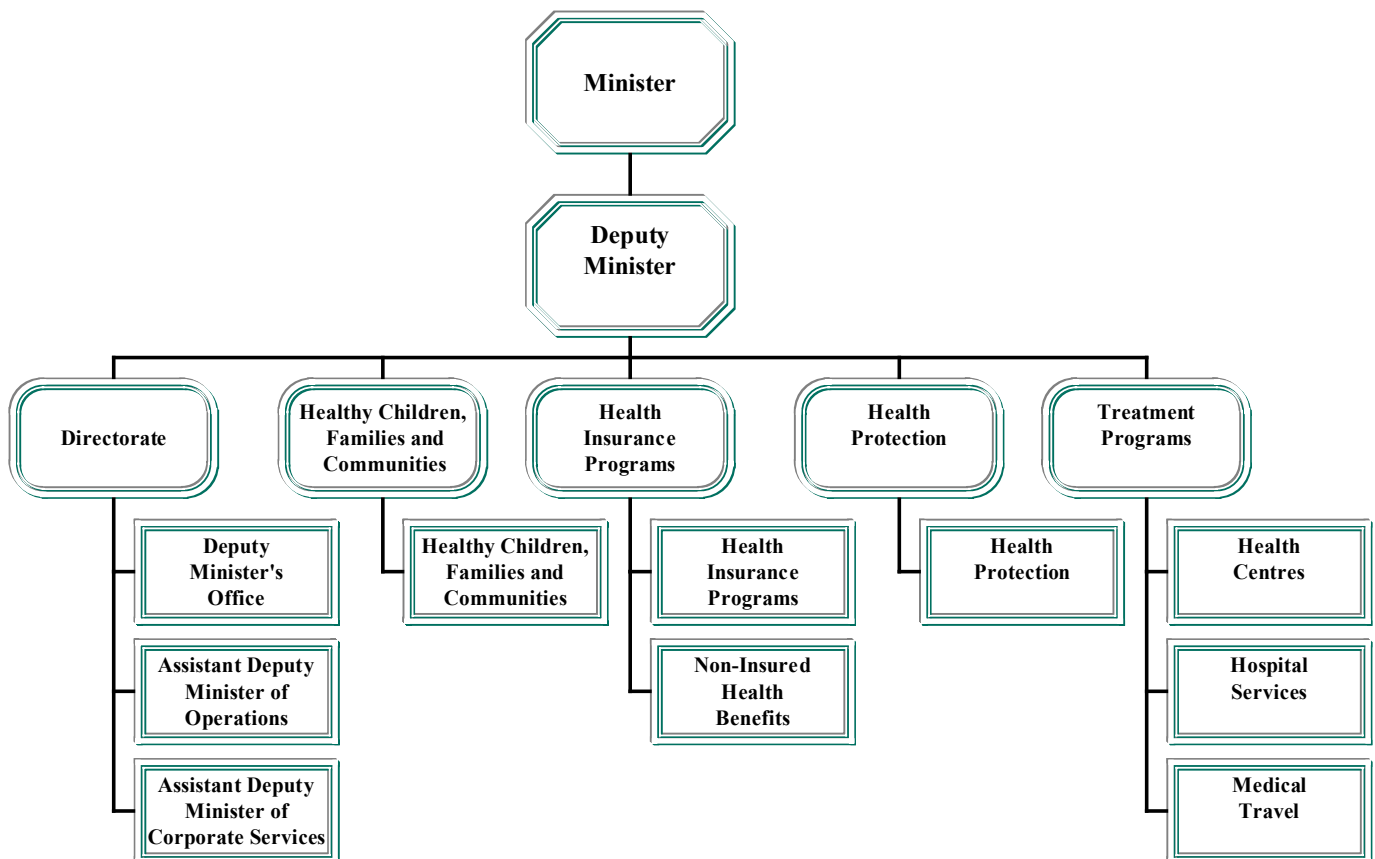
**Edward Picco**  
 Minister

**Wayne Govereau**  
 Assistant Deputy Minister  
 Operations

**Keith Best**  
 Deputy Minister

**Abraham Tagalik**  
 Assistant Deputy Minister  
 Corporate Services & Strategic Initiatives

## ACCOUNTING STRUCTURE CHART





ᐱᓕᓂᐱᓪᐳᓪ ᐱᓕᓂᐱᓪᐳᓪ  
DETAIL OF EXPENDITURES

		ᐱᓕᓂᐱᓪᐳᓪ ᐱᓕᓂᐱᓪᐳᓪ	ᐱᓕᓂᐱᓪᐳᓪ ᐱᓕᓂᐱᓪᐳᓪ	ᐱᓕᓂᐱᓪᐳᓪ ᐱᓕᓂᐱᓪᐳᓪ
		2003-2004 Capital Estimates (\$000)	2002-2003 Revised Estimates (\$000)	2002-2003 Capital Estimates (\$000)
<b>ᐱᓕᓂᐱᓪᐳᓪ ᐱᓕᓂᐱᓪᐳᓪ</b>		<b>Capital Expenditures</b>		
ᐱᓕᓂᐱᓪᐳᓪ ᐱᓕᓂᐱᓪᐳᓪ	Grants and Contributions	-	-	-
ᐱᓕᓂᐱᓪᐳᓪ ᐱᓕᓂᐱᓪᐳᓪ	Tangible Assets	55,790	9,255	5,860
ᐱᓕᓂᐱᓪᐳᓪ ᐱᓕᓂᐱᓪᐳᓪ	Computer Hardware and Software	-	-	-
<b>ᐱᓕᓂᐱᓪᐳᓪ ᐱᓕᓂᐱᓪᐳᓪ</b>	<b>Total Capital Expenditures</b>	<b>55,790</b>	<b>9,255</b>	<b>5,860</b>



ᓂᓐᓂᓐᓂᓐ ᐱᓕᓕᓐᓂᓐ  
DIRECTORATE

ᐱᓕᓕᓐᓂᓐ ᓂᓐᓂᓐᓂᓐ Project Number	ᓂᓐᓂᓐᓂᓐ ᓂᓐᓂᓐᓂᓐ Detail of Capital	ᓂᓐᓂᓐᓂᓐ ᓂᓐᓂᓐᓂᓐ 2003-2004 Capital Estimates (\$000)	ᓂᓐᓂᓐᓂᓐ ᓂᓐᓂᓐᓂᓐ 2002-2003 Prior Year Cost (\$000)	ᓂᓐᓂᓐᓂᓐ ᓂᓐᓂᓐᓂᓐ 2004-2008 Capital Plan (\$000)
<b>ᓂᓐᓂᓐᓂᓐ ᐱᓕᓕᓐᓂᓐ Tangible Assets</b>				
<b>ᓂᓐᓂᓐᓂᓐ ᓂᓐᓂᓐᓂᓐ Qikiqtaaluk Region</b>				
<b>ᓂᓐᓂᓐᓂᓐ ᓂᓐᓂᓐᓂᓐ Igloolik</b>				
500217	ᓂᓐᓂᓐᓂᓐ ᓂᓐᓂᓐᓂᓐ ᓂᓐᓂᓐᓂᓐ Health Centre Replacement	4,000	500	3,450
<b>ᓂᓐᓂᓐᓂᓐ ᓂᓐᓂᓐᓂᓐ Iqaluit</b>				
510020	ᓂᓐᓂᓐᓂᓐ ᓂᓐᓂᓐᓂᓐ Qikiqtani General Hospital	15,900	-	30,000
510017	ᓂᓐᓂᓐᓂᓐ ᓂᓐᓂᓐᓂᓐ Qikiqtani General Hospital FF&E	1,100	-	5,700
<b>ᓂᓐᓂᓐᓂᓐ ᓂᓐᓂᓐᓂᓐ Pangnirtung</b>				
510000	ᓂᓐᓂᓐᓂᓐ ᓂᓐᓂᓐᓂᓐ ᓂᓐᓂᓐᓂᓐ Health Centre Replacement	75	450	5,355
<b>ᓂᓐᓂᓐᓂᓐ ᓂᓐᓂᓐᓂᓐ Pond Inlet</b>				
510001	ᓂᓐᓂᓐᓂᓐ ᓂᓐᓂᓐᓂᓐ ᓂᓐᓂᓐᓂᓐ Health Centre Replacement	4,445	3,874	45
<b>ᓂᓐᓂᓐᓂᓐ ᓂᓐᓂᓐᓂᓐ - ᓂᓐᓂᓐᓂᓐ Qikiqtaaluk - Various</b>				
510010	ᓂᓐᓂᓐᓂᓐ/ᓂᓐᓂᓐᓂᓐ Equipment/Vehicles	100	115	690
<b>ᓂᓐᓂᓐᓂᓐ ᓂᓐᓂᓐᓂᓐ ᓂᓐᓂᓐᓂᓐ Total Qikiqtaaluk Region</b>		<b>25,620</b>	<b>-</b>	<b>-</b>

ᐱᑦᑕᑦᑎᐱᑦ ᐱᑦᑕᑦᑎᐱᑦ  
DIRECTORATE

ᐱᑦᑕᑦᑎᐱᑦ ᐱᑦᑕᑦᑎᐱᑦ ᐱᑦᑕᑦᑎᐱᑦ Project Number	ᐱᑦᑕᑦᑎᐱᑦ ᐱᑦᑕᑦᑎᐱᑦ Detail of Capital	ᐱᑦᑕᑦᑎᐱᑦ ᐱᑦᑕᑦᑎᐱᑦ 2003-2004 Capital Estimates (\$000)	ᐱᑦᑕᑦᑎᐱᑦ ᐱᑦᑕᑦᑎᐱᑦ 2002-2003 Prior Year Cost (\$000)	ᐱᑦᑕᑦᑎᐱᑦ ᐱᑦᑕᑦᑎᐱᑦ 2004-2008 Capital Plan (\$000)
<b>ᐱᑦᑕᑦᑎᐱᑦ ᐱᑦᑕᑦᑎᐱᑦ Tangible Assets</b>				
<b>ᐱᑦᑕᑦᑎᐱᑦ ᐱᑦᑕᑦᑎᐱᑦ Kivalliq Region</b>				
<b>ᐱᑦᑕᑦᑎᐱᑦ ᐱᑦᑕᑦᑎᐱᑦ Rankin Inlet</b>				
510021	ᐱᑦᑕᑦᑎᐱᑦ ᐱᑦᑕᑦᑎᐱᑦ Kivalliq Health Centre	11,275	-	1,000
510018	ᐱᑦᑕᑦᑎᐱᑦ ᐱᑦᑕᑦᑎᐱᑦ Kivalliq Health Centre FF&E	2,000	120	590
<b>ᐱᑦᑕᑦᑎᐱᑦ ᐱᑦᑕᑦᑎᐱᑦ Repulse Bay</b>				
500231	ᐱᑦᑕᑦᑎᐱᑦ ᐱᑦᑕᑦᑎᐱᑦ Health Centre/Residence Replacement	75	445	6,075
<b>ᐱᑦᑕᑦᑎᐱᑦ ᐱᑦᑕᑦᑎᐱᑦ Kivalliq - Various</b>				
510011	ᐱᑦᑕᑦᑎᐱᑦ ᐱᑦᑕᑦᑎᐱᑦ Equipment/Vehicles	75	80	370
<b>ᐱᑦᑕᑦᑎᐱᑦ ᐱᑦᑕᑦᑎᐱᑦ Total Kivalliq Region</b>		<b>13,425</b>	<b>-</b>	<b>-</b>



ᐱᓕᓕᐱᓪᓴᑦ ᐱᓕᓕᐱᓪᓴᑦ  
DIRECTORATE

ᐱᓕᓕᐱᓪᓴᑦ ᐱᓕᓕᐱᓪᓴᑦ ᐱᓕᓕᐱᓪᓴᑦ Project Number	ᐱᓕᓕᐱᓪᓴᑦ ᐱᓕᓕᐱᓪᓴᑦ Detail of Capital	ᐱᓕᓕᐱᓪᓴᑦ ᐱᓕᓕᐱᓪᓴᑦ 2003-2004 Capital Estimates (\$000)	ᐱᓕᓕᐱᓪᓴᑦ ᐱᓕᓕᐱᓪᓴᑦ 2002-2003 Prior Year Cost (\$000)	ᐱᓕᓕᐱᓪᓴᑦ ᐱᓕᓕᐱᓪᓴᑦ 2004-2008 Capital Plan (\$000)
<b>ᐱᓕᓕᐱᓪᓴᑦ ᐱᓕᓕᐱᓪᓴᑦ Tangible Assets</b>				
<b>ᐱᓕᓕᐱᓪᓴᑦ ᐱᓕᓕᐱᓪᓴᑦ Kitikmeot Region</b>				
<b>ᐱᓕᓕᐱᓪᓴᑦ ᐱᓕᓕᐱᓪᓴᑦ Cambridge Bay</b>				
510022	ᐱᓕᓕᐱᓪᓴᑦ ᐱᓕᓕᐱᓪᓴᑦ Kitikmeot Health Centre	14,000	-	1,000
510019	ᐱᓕᓕᐱᓪᓴᑦ ᐱᓕᓕᐱᓪᓴᑦ Kitikmeot Health Centre FF&E	2,000	120	590
<b>ᐱᓕᓕᐱᓪᓴᑦ ᐱᓕᓕᐱᓪᓴᑦ Taloyoak</b>				
500239	ᐱᓕᓕᐱᓪᓴᑦ ᐱᓕᓕᐱᓪᓴᑦ Health Centre Renovations	670	334	1,400
<b>ᐱᓕᓕᐱᓪᓴᑦ ᐱᓕᓕᐱᓪᓴᑦ Kitikmeot - Various</b>				
510012	ᐱᓕᓕᐱᓪᓴᑦ ᐱᓕᓕᐱᓪᓴᑦ Equipment/Vehicles	75	80	370
<b>ᐱᓕᓕᐱᓪᓴᑦ ᐱᓕᓕᐱᓪᓴᑦ Total Kitikmeot Region</b>		<b>16,745</b>	<b>-</b>	<b>-</b>
<b>ᐱᓕᓕᐱᓪᓴᑦ ᐱᓕᓕᐱᓪᓴᑦ Total Tangible Assets</b>		<b>55,790</b>	<b>-</b>	<b>-</b>

ᐱᑦᑕᑦᑎᐱᑦ ᐱᑦᑕᑦᑎᐱᑦ  
DIRECTORATE

ᐱᑦᑕᑦᑎᐱᑦ ᐱᑦᑕᑦᑎᐱᑦ Project Number	ᐱᑦᑕᑦᑎᐱᑦ ᐱᑦᑕᑦᑎᐱᑦ Detail of Capital	ᐱᑦᑕᑦᑎᐱᑦ ᐱᑦᑕᑦᑎᐱᑦ 2003-2004 Capital Estimates (\$000)	ᐱᑦᑕᑦᑎᐱᑦ ᐱᑦᑕᑦᑎᐱᑦ 2002-2003 Prior Year Cost (\$000)	ᐱᑦᑕᑦᑎᐱᑦ ᐱᑦᑕᑦᑎᐱᑦ 2004-2008 Capital Plan (\$000)
<b>ᐱᑦᑕᑦᑎᐱᑦ ᐱᑦᑕᑦᑎᐱᑦ Capital Lease</b>				
<b>ᐱᑦᑕᑦᑎᐱᑦ Chesterfield Inlet</b>				
510023	ᐱᑦᑕᑦᑎᐱᑦ: ᐱᑦᑕᑦᑎᐱᑦ ᐱᑦᑕᑦᑎᐱᑦ ᐱᑦᑕᑦᑎᐱᑦ Pimakslirvik: Chesterfield Inlet Residential Care Facility	4,250	-	-
<b>ᐱᑦᑕᑦᑎᐱᑦ ᐱᑦᑕᑦᑎᐱᑦ ᐱᑦᑕᑦᑎᐱᑦ Capital Lease Total</b>		<b>4,250</b>	<b>-</b>	<b>-</b>



