



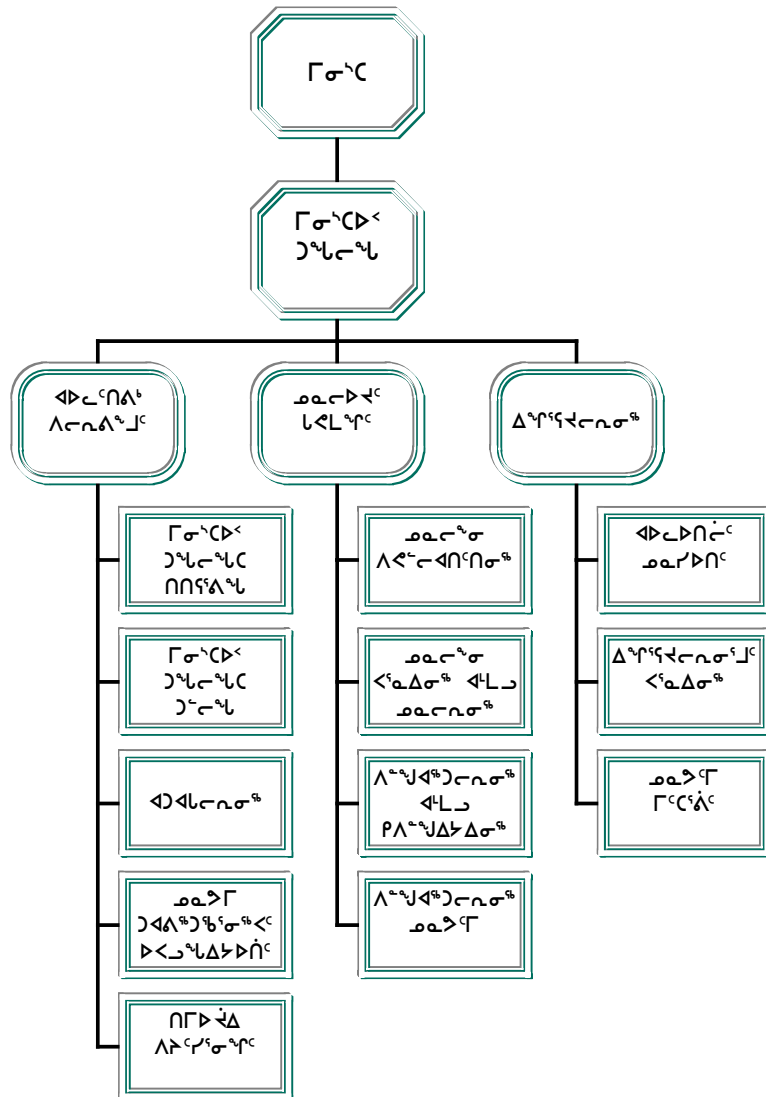
ጠቅላይ ስራ  
 ጠቅላይ

ጠቅላይ ስራ  
 ጠቅላይ ስራ ልማት ልማት  
 ልማት ልማት

ጠቅላይ ስራ  
 ጠቅላይ ስራ

ጠቅላይ ስራ  
 ጠቅላይ ስራ ልማት ልማት  
 ልማት ልማት

የፎካል ስፔሻላይዥን ልማት ልማት



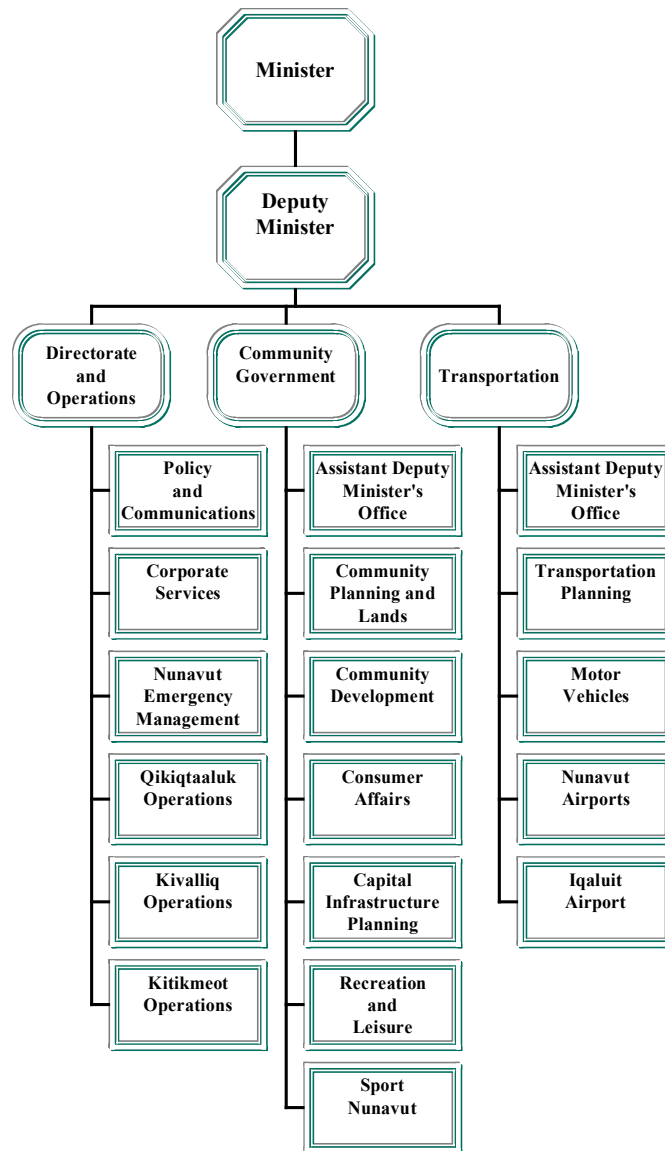
**Manitok Thompson**  
Minister

**Methusalah Kunuk**  
Assistant Deputy Minister  
Transportation

**John Walsh**  
Deputy Minister

**Shawn Maley**  
Assistant Deputy Minister  
Community Government

## ACCOUNTING STRUCTURE CHART















## ᓄᓇᓚᓴᓴ ᓴᓴᓚᓚᓲᓲ COMMUNITY GOVERNMENT

	ᑭᓇᓴᓲᓲ ᐱᓴᓴᓴᓲᓲ 2003-2004 Main Estimates (\$000)	ᐱᓲᓲᓲᓴᓲᓲᓲᓲ ᐱᓲᓲᓲᓴᓲᓲᓲᓲ 2002-2003 Revised Estimates (\$000)	ᑭᓇᓴᓲᓲ ᐱᓲᓲᓲᓴᓲᓲᓲᓲ 2002-2003 Main Estimates (\$000)
<b>ᓴᓴᓴᓲᓲ ᐱᓴᓴ ᐃᓴᓴᓲᓲ</b> <b>Grants and Contributions</b>			
<b>ᓴᓴᓴᓲᓲ Grants</b>			
<b>ᓄᓇᓯᓪ ᓴᓴᓚᓚᓲᓲ ᓄᓄᓄᓲᓲᓲᓲᓲ ᐱᓲᓲᓲᓲᓲᓲᓲᓲᓲᓲ</b> ᑭᓇᓴᓲᓲᓲᓲᓲ ᓴᓴᓴᓲᓲᓲᓲᓲᓲᓲᓲᓲ ᓄᓄᓄᓲᓲᓲᓲ ᓴᓴᓚᓚᓲᓲᓲ ᐃᓴᓴᓲᓲᓲᓲᓲᓲᓲᓲ ᐱᓲᓲᓲᓲᓲᓲᓲᓲᓲᓲ ᐃᓴᓴᓲᓲᓲᓲᓲ ᐱᓲᓲᓲᓲᓲᓲᓲᓲᓲᓲ ᐱᓲᓲᓲᓲᓲ ᓄᓄᓄᓲᓲᓲᓲᓲ ᓴᓴᓚᓚᓲᓲᓲᓲ ᓄᓄᓄᓲᓲᓲᓲᓲᓲᓲ. <sup>2</sup>	-	800	800
<b>Municipal Insurance Premiums</b> To provide a grant to Nunavut Municipalities to assist to offset the incremental operating costs associated with Municipal Insurances.			
<b>ᓄᓄᓄᓲᓲᓲᓲᓲᓲᓲ</b> ᑭᓇᓴᓲᓲᓲᓲ ᓴᓴᓲᓲᓲᓲᓲᓲ ᐃᓴᓴᓲᓲᓲᓲᓲᓲᓲᓲᓲᓲ ᓄᓄᓄᓲᓲᓲᓲᓲ ᓴᓴᓚᓚᓲᓲᓲᓲᓲᓲ (ᓴᓲᓲᓲᓲᓲᓲ ᐱᓲᓲᓲᓲᓲᓲᓲᓲ)ᓲᓲ ᐃᓴᓴᓲᓲ ᓄᓄᓄᓲᓲᓲᓲᓲ ᐱᓲᓲᓲᓲᓲᓲᓲᓲᓲ.	<b>768</b>	768	768
<b>Equalization</b> To provide grants to assist municipal taxing authorities in the provision of municipal services to community residents.			
<b>ᓲᓲᓲᓲᓲᓲᓲ ᐱᓲᓲᓲᓲᓲ ᐃᓴᓴᓲᓲᓲ</b> ᑭᓇᓴᓲᓲᓲᓲ ᓴᓴᓴᓲᓲᓲᓲᓲᓲᓲᓲ ᓄᓄᓄᓲᓲ ᓄᓄᓄᓲᓲᓲᓲ ᓴᓴᓚᓚᓲᓲᓲ ᐃᓴᓴᓲᓲᓲᓲᓲᓲᓲᓲ ᐱᓲᓲᓲᓲᓲᓲᓲᓲᓲᓲ ᐱᓲᓲᓲᓲᓲᓲᓲᓲᓲ ᐱᓲᓲᓲᓲᓲ ᓲᓲᓲᓲᓲᓲᓲᓲ ᐱᓲᓲᓲᓲᓲᓲᓲᓲᓲᓲ.	-	347	347
<b>Fuel Price Adjustment</b> To provide a grant to Nunavut municipalities to offset incremental operating costs associated with fuel price increases.			
<b>ᓄᓄᓄᓲᓲ ᓄᓄᓄᓲᓲ ᓴᓴᓚᓚᓲᓲ ᓴᓴᓲᓲᓲᓲᓲᓲ</b> ᑭᓇᓴᓲᓲᓲᓲ ᓴᓴᓴᓲᓲᓲᓲᓲᓲᓲᓲᓲ ᓄᓄᓄᓲᓲ ᓄᓄᓄᓲᓲᓲᓲ ᓴᓴᓚᓚᓲᓲᓲ ᐃᓴᓴᓲᓲᓲᓲᓲᓲᓲᓲᓲ ᐱᓲᓲᓲᓲᓲᓲᓲᓲᓲ ᐱᓲᓲᓲᓲᓲᓲᓲᓲᓲ ᓴᓴᓴᓲᓲᓲᓲᓲᓲ ᐃᓄᓄᓲᓲᓲᓲᓲᓲ ᐱᓄᓄᓲᓲᓲᓲᓲ ᐃᓴᓴᓲᓲᓲᓲᓲᓲᓲᓲᓲ.	<b>135</b>	135	135
<b>Nunavut Association of Municipalities</b> To provide a grant to Nunavut municipalities to offset some operating costs of the association and to acknowledge departmental support.			



ᓄᓇᓕᓐ ᓂᓴᓂᓴᓐ  
COMMUNITY GOVERNMENT

	ᓱᓴᓂᓴᓐ ᓱᓴᓂᓴᓐ	ᓱᓴᓂᓴᓐ ᓱᓴᓂᓴᓐ ᓱᓴᓂᓴᓐ	ᓱᓴᓂᓴᓐ ᓱᓴᓂᓴᓐ
	2003-2004 Main Estimates (\$000)	2002-2003 Revised Estimates (\$000)	2002-2003 Main Estimates (\$000)
<b>ᓱᓴᓂᓴᓐ ᓱᓴᓂᓴᓐ</b> <b>Grants and Contributions</b>			
<b>ᓱᓴᓂᓴᓐ ᓱᓴᓂᓴᓐ</b> <b>Grants</b>			
<b>ᓱᓴᓂᓴᓐ ᓱᓴᓂᓴᓐ ᓄᓇᓂᓴᓐ</b> ᓱᓴᓂᓴᓐ	<b>200</b>	-	-
<b>Municipal Training Grant</b> To facilitate the development and provide delivery of Municipal Training Initiatives in Nunavut.			
<b>ᓱᓴᓂᓴᓐ ᓱᓴᓂᓴᓐ ᓱᓴᓂᓴᓐ ᓱᓴᓂᓴᓐ ᓱᓴᓂᓴᓐ</b> ᓱᓴᓂᓴᓐ	<b>1,720</b>	1,035	1,035
<b>Sport Nunavut Grant</b> These programs are designed to assist Sport Nunavut fund the delivery of programs and services including training and development of Nunavummiut and include programs such as: organizational funding, sport development funding, events and games funding, and technical development funding.			
<b>ᓱᓴᓂᓴᓐ ᓱᓴᓂᓴᓐ ᓱᓴᓂᓴᓐ ᓱᓴᓂᓴᓐ ᓱᓴᓂᓴᓐ</b> ᓱᓴᓂᓴᓐ	<b>405</b>	40	40
<b>Recreation and Leisure Grants</b> These programs are designed to assist communities in developing recreational activities as events at the community level. Recreation and Leisure Programs is comprised of the Traditional Recreation Activities Program.			
<b>ᓱᓴᓂᓴᓐ ᓱᓴᓂᓴᓐ ᓱᓴᓂᓴᓐ ᓱᓴᓂᓴᓐ</b> <b>Total Grants</b>	<b>4,381</b>	<b>4,405</b>	<b>4,405</b>















ᓄᓄᓄᓄᓂᓪ ᓄᓄᓄᓄᓂᓪ ᓄᓄᓄᓄᓂᓪ ᓄᓄᓄᓄᓂᓪ  
**DISTRIBUTION OF OPERATIONS AND MAINTENANCE BUDGET**

	ᓄᓄᓄᓄᓂᓪ Headquarters (\$000)	ᓄᓄᓄᓄᓂᓪ Qikiqtaaluk (\$000)	ᓄᓄᓄᓄᓂᓪ Kivalliq (\$000)	ᓄᓄᓄᓄᓂᓪ Kitikmeot (\$000)	ᓄᓄᓄᓄᓂᓪ Total (\$000)
ᓄᓄᓄᓄᓂᓪ ᓄᓄᓄᓄᓂᓪ ᓄᓄᓄᓄᓂᓪ Compensation and Benefits	8,378	2,568	1,221	1,124	<b>13,291</b>
ᓄᓄᓄᓄᓂᓪ ᓄᓄᓄᓄᓂᓪ Grants and Contributions	2,812	18,516	10,404	8,331	<b>40,063</b>
ᓄᓄᓄᓄᓂᓪ ᓄᓄᓄᓄᓂᓪ Travel and Transportation	1,901	668	249	212	<b>3,030</b>
ᓄᓄᓄᓄᓂᓪ ᓄᓄᓄᓄᓂᓪ Materials and Supplies	378	413	50	37	<b>878</b>
ᓄᓄᓄᓄᓂᓪ ᓄᓄᓄᓄᓂᓪ Purchased Services	195	65	48	15	<b>323</b>
ᓄᓄᓄᓄᓂᓪ Utilities	305	470	-	143	<b>918</b>
ᓄᓄᓄᓄᓂᓪ ᓄᓄᓄᓄᓂᓪ Contract Services	4,080	3,433	2,388	1,501	<b>11,402</b>
ᓄᓄᓄᓄᓂᓪ ᓄᓄᓄᓄᓂᓪ Fees and Payments	1,384	53	68	25	<b>1,530</b>
ᓄᓄᓄᓄᓂᓪ ᓄᓄᓄᓄᓂᓪ Other Expenses	387	114	40	47	<b>588</b>
<b>ᓄᓄᓄᓄᓂᓪ ᓄᓄᓄᓄᓂᓪ ᓄᓄᓄᓄᓂᓪ Total Operations &amp; Maintenance</b>	<b>19,820</b>	<b>26,300</b>	<b>14,468</b>	<b>11,435</b>	<b>72,023</b>



