

ᐃᓕᓐᓂᐱᓐᓂᓕᓂᓐᓂᓐ



EDUCATION

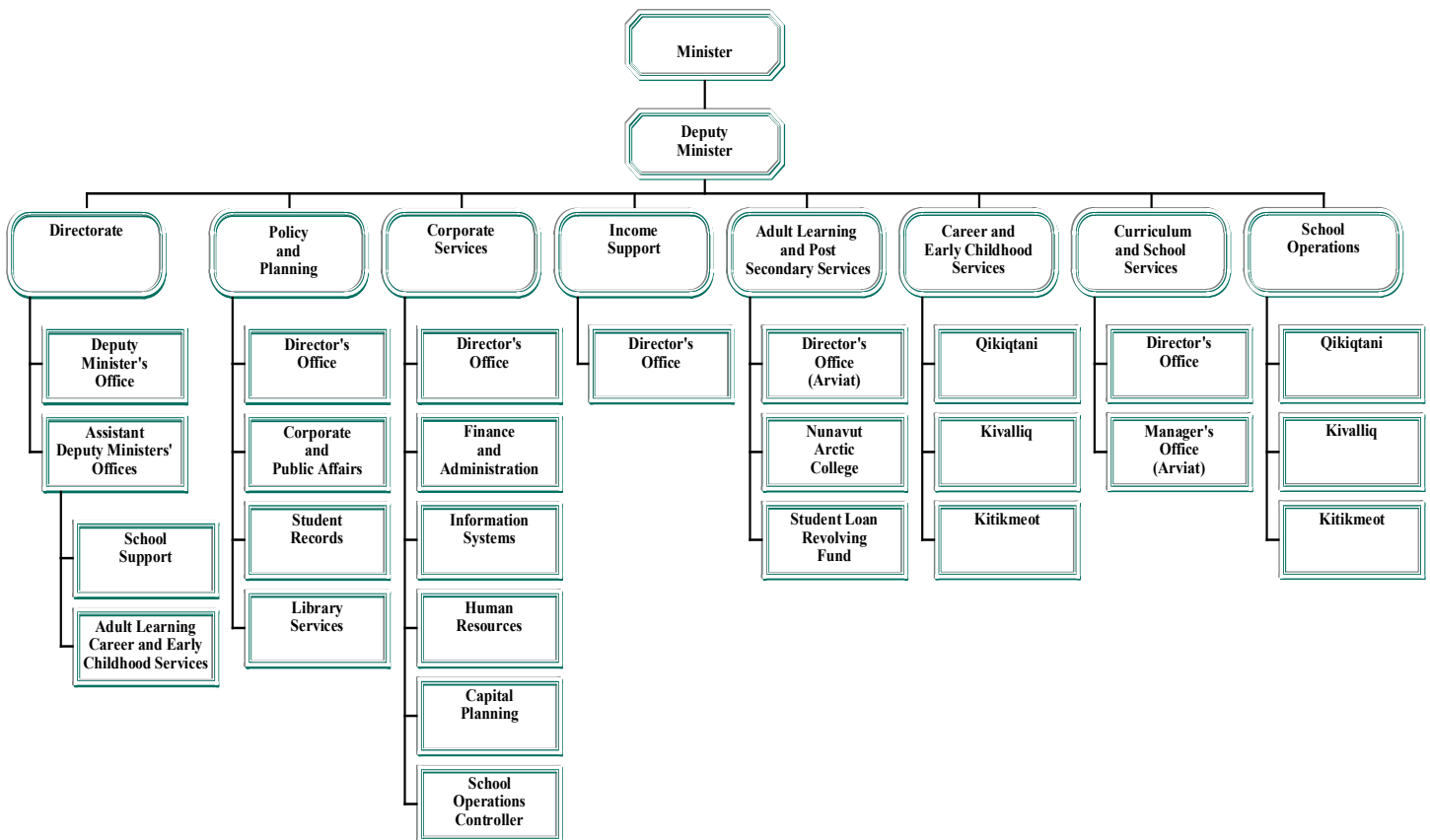
Peter Kilabuk
 Minister

Naullaq Arnaquq
 Assistant Deputy Minister

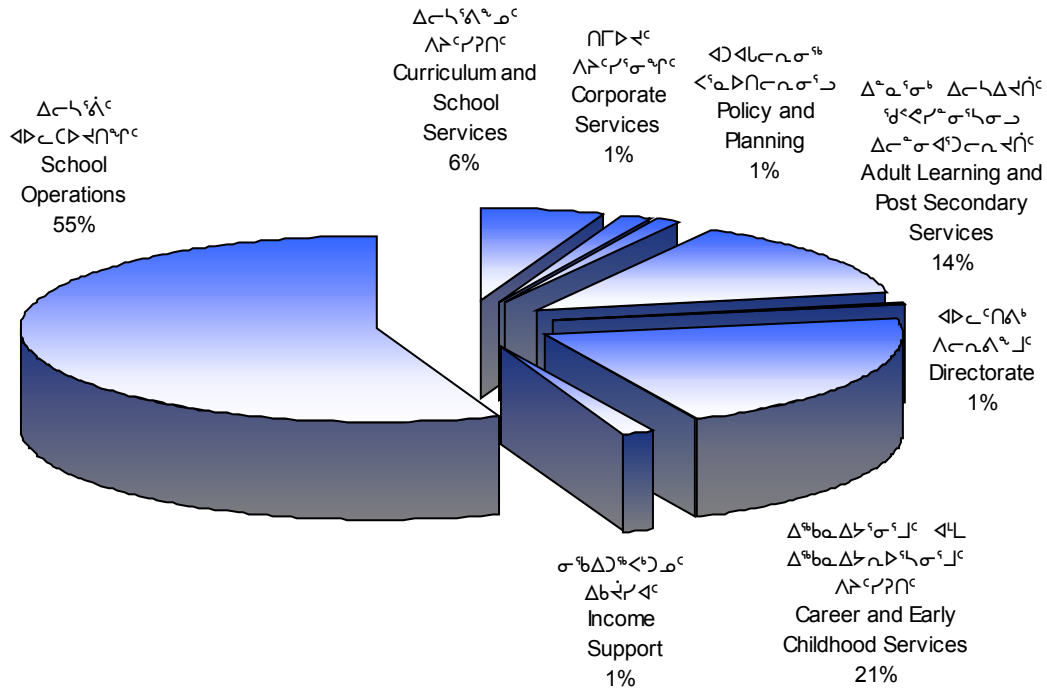
Tom Rich
 Deputy Minister

Kathy Okpik
 Assistant Deputy Minister

ACCOUNTING STRUCTURE CHART



ᐃᑦᓂᐳᑦᓕᓕᓕᓕᓕᓕᓕ ᐃᑦᓕᓕᓕᓕᓕᓕᓕ
DETAIL OF EXPENDITURES



ᐃᑦᓂᐳᑦᓕᓕᓕᓕᓕᓕᓕᓕᓕ	DESCRIPTION	ᐃᑦᓂᐳᑦᓕᓕᓕᓕᓕᓕᓕᓕᓕᓕ	ᐃᑦᓂᐳᑦᓕᓕᓕᓕᓕᓕᓕᓕᓕᓕᓕ	ᐃᑦᓂᐳᑦᓕᓕᓕᓕᓕᓕᓕᓕᓕᓕᓕ
		2003-2004 Main Estimates (\$000)	2002-2003 Revised Estimates (\$000)	2002-2003 Main Estimates (\$000)
ᐃᑦᓂᐳᑦᓕᓕᓕᓕᓕᓕᓕᓕᓕᓕᓕᓕᓕᓕ	Compensation and Benefits	77,328	73,330	74,469
ᐃᑦᓂᐳᑦᓕᓕᓕᓕᓕᓕᓕᓕᓕᓕᓕᓕᓕᓕ	Grants and Contributions	36,808	36,948	34,969
ᐃᑦᓂᐳᑦᓕᓕᓕᓕᓕᓕᓕᓕᓕᓕᓕᓕᓕᓕ	Travel and Transportation	4,867	5,037	3,435
ᐃᑦᓂᐳᑦᓕᓕᓕᓕᓕᓕᓕᓕᓕᓕᓕᓕᓕᓕ	Materials and Supplies	1,213	945	775
ᐃᑦᓂᐳᑦᓕᓕᓕᓕᓕᓕᓕᓕᓕᓕᓕᓕᓕᓕ	Purchased Services	1,708	1,198	1,102
ᐃᑦᓂᐳᑦᓕᓕᓕᓕᓕᓕᓕᓕᓕᓕᓕᓕᓕᓕ	Utilities	8,158	7,869	7,543
ᐃᑦᓂᐳᑦᓕᓕᓕᓕᓕᓕᓕᓕᓕᓕᓕᓕᓕᓕ	Contract Services	5,579	5,901	5,780
ᐃᑦᓂᐳᑦᓕᓕᓕᓕᓕᓕᓕᓕᓕᓕᓕᓕᓕᓕ	Fees and Payments	23,724	23,697	23,658
ᐃᑦᓂᐳᑦᓕᓕᓕᓕᓕᓕᓕᓕᓕᓕᓕᓕᓕᓕ	Other Expenses	585	600	818
ᐃᑦᓂᐳᑦᓕᓕᓕᓕᓕᓕᓕᓕᓕᓕᓕᓕᓕᓕᓕ	Total Operations & Maintenance	159,970	155,525	152,549
ᐃᑦᓂᐳᑦᓕᓕᓕᓕᓕᓕᓕᓕᓕᓕᓕᓕᓕᓕᓕ	Total Capital	23,985	23,499	19,500
ᐃᑦᓂᐳᑦᓕᓕᓕᓕᓕᓕᓕᓕᓕᓕᓕᓕᓕᓕᓕ	Total Expenditures	183,955	179,024	172,049

ᐃᐃᓂᑦᓂᑦᓂᑦ ᐳᑦᓂᑦᓂᑦ
POLICY AND PLANNING

	ᓂᐳᑦᓂᑦᓂᑦ ᐳᑦᓂᑦᓂᑦᓂᑦ 2003-2004 Main Estimates (\$000)	ᐳᑦᓂᑦᓂᑦᓂᑦ ᐳᑦᓂᑦᓂᑦᓂᑦ 2002-2003 Revised Estimates (\$000)	ᓂᐳᑦᓂᑦᓂᑦ ᐳᑦᓂᑦᓂᑦᓂᑦ 2002-2003 Main Estimates (\$000)
ᓂᐳᑦᓂᑦᓂᑦ ᐳᑦᓂᑦᓂᑦ Grants and Contributions			
ᐳᑦᓂᑦᓂᑦᓂᑦ Contributions			
ᐳᑦᓂᑦᓂᑦᓂᑦᓂᑦ ᐳᑦᓂᑦᓂᑦᓂᑦᓂᑦ ᐳᑦᓂᑦᓂᑦᓂᑦᓂᑦ ᐳᑦᓂᑦᓂᑦᓂᑦᓂᑦ	352	352	352
Library Services Supports library operations in each region.			
ᐳᑦᓂᑦᓂᑦᓂᑦᓂᑦ Total Contributions	352	352	352
ᐳᑦᓂᑦᓂᑦᓂᑦᓂᑦᓂᑦ Total Grants and Contributions	352	352	352

ᐱᑦᓂᑦᓂᑦᓂᑦᓂᑦ ᐱᑦᓂᑦᓂᑦᓂᑦ
CORPORATE SERVICES

	ᐱᑦᓂᑦᓂᑦᓂᑦᓂᑦ ᐱᑦᓂᑦᓂᑦᓂᑦᓂᑦ 2003-2004 Main Estimates (\$000)	ᐱᑦᓂᑦᓂᑦᓂᑦᓂᑦ ᐱᑦᓂᑦᓂᑦᓂᑦᓂᑦ 2002-2003 Revised Estimates (\$000)	ᐱᑦᓂᑦᓂᑦᓂᑦᓂᑦ ᐱᑦᓂᑦᓂᑦᓂᑦᓂᑦ 2002-2003 Main Estimates (\$000)
ᐱᑦᓂᑦᓂᑦᓂᑦᓂᑦ ᐱᑦᓂᑦᓂᑦᓂᑦ Grants and Contributions			
ᐱᑦᓂᑦᓂᑦᓂᑦᓂᑦ Contributions			
ᓂᑦᓂᑦᓂᑦᓂᑦᓂᑦ ᓂᑦᓂᑦᓂᑦᓂᑦᓂᑦ ᐱᑦᓂᑦᓂᑦᓂᑦ ᐱᑦᓂᑦᓂᑦᓂᑦᓂᑦᓂᑦ ᓂᑦᓂᑦᓂᑦᓂᑦᓂᑦ ᓂᑦᓂᑦᓂᑦᓂᑦᓂᑦ ᓂᑦᓂᑦᓂᑦᓂᑦᓂᑦ ᓂᑦᓂᑦᓂᑦᓂᑦᓂᑦᓂᑦ, ᓂᑦᓂᑦᓂᑦᓂᑦᓂᑦ ᐱᑦᓂᑦᓂᑦᓂᑦᓂᑦᓂᑦ ᐱᑦᓂᑦᓂᑦᓂᑦᓂᑦ ᐱᑦᓂᑦᓂᑦᓂᑦᓂᑦ ᐱᑦᓂᑦᓂᑦᓂᑦᓂᑦᓂᑦ.	20	44	-
Community Access Program Provides funding to the Nunavut Community Internet Access Program for new sites, additional funding and youth employment.			
ᓂᑦᓂᑦᓂᑦᓂᑦᓂᑦ ᐱᑦᓂᑦᓂᑦᓂᑦ Total Contributions	20	44	-
ᓂᑦᓂᑦᓂᑦᓂᑦᓂᑦ ᐱᑦᓂᑦᓂᑦᓂᑦᓂᑦ Total Grants and Contributions	20	44	-

ᐃᑦᓂᐳᑦᓂᑦ ᐃᑦᓂᐳᑦᓂᑦᓂᑦ ᐳᑦᓂᑦᓂᑦ ᐳᑦᓂᑦᓂᑦᓂᑦ ᐳᑦᓂᑦᓂᑦᓂᑦ ᐳᑦᓂᑦᓂᑦᓂᑦ
ADULT LEARNING AND POST SECONDARY SERVICES

	ᐳᓂᐳᑦᓂᑦ ᐳᑦᓂᑦᓂᑦᓂᑦ 2003-2004 Main Estimates (\$000)	ᐳᑦᓂᑦᓂᑦᓂᑦ ᐳᑦᓂᑦᓂᑦᓂᑦ 2002-2003 Revised Estimates (\$000)	ᐳᓂᐳᑦᓂᑦ ᐳᑦᓂᑦᓂᑦᓂᑦ 2002-2003 Main Estimates (\$000)
ᐳᓂᐳᑦᓂᑦ ᐳᑦᓂᑦᓂᑦᓂᑦ Grants and Contributions			
ᐳᓂᐳᑦᓂᑦ Grants			
ᐃᑦᓂᐳᑦᓂᑦᓂᑦᓂᑦ ᐳᓂᐳᑦᓂᑦ ᐳᓂᐳᑦᓂᑦ ᐳᓂᐳᑦᓂᑦ ᐳᓂᐳᑦᓂᑦ ᐳᓂᐳᑦᓂᑦ ᐳᓂᐳᑦᓂᑦ ᐳᓂᐳᑦᓂᑦ ᐳᓂᐳᑦᓂᑦ ᐳᓂᐳᑦᓂᑦ	3,642	3,642	3,642
Student Financial Assistance Grants made to individuals supporting their attendance at Post Secondary Institutions.			
ᐳᓂᐳᑦᓂᑦ ᐳᓂᐳᑦᓂᑦ Total Grants	3,642	3,642	3,642
ᐳᓂᐳᑦᓂᑦ Contributions			
ᐳᓂᐳᑦᓂᑦ ᐳᓂᐳᑦᓂᑦ ᐳᓂᐳᑦᓂᑦ ᐳᓂᐳᑦᓂᑦ ᐳᓂᐳᑦᓂᑦ ᐳᓂᐳᑦᓂᑦ ᐳᓂᐳᑦᓂᑦ ᐳᓂᐳᑦᓂᑦ ᐳᓂᐳᑦᓂᑦ	15,564	15,566	14,318
College Contributions Supports Nunavut Arctic College. Provides for operations and maintenance costs at the community and regional level.			
ᐳᓂᐳᑦᓂᑦ ᐳᓂᐳᑦᓂᑦ ᐳᓂᐳᑦᓂᑦ ᐳᓂᐳᑦᓂᑦ ᐳᓂᐳᑦᓂᑦ ᐳᓂᐳᑦᓂᑦ ᐳᓂᐳᑦᓂᑦ ᐳᓂᐳᑦᓂᑦ ᐳᓂᐳᑦᓂᑦ	150	150	150
Literacy Program Funding to Nunavut Arctic College to deliver literacy programs.			
ᐳᓂᐳᑦᓂᑦ ᐳᓂᐳᑦᓂᑦ ᐳᓂᐳᑦᓂᑦ ᐳᓂᐳᑦᓂᑦ ᐳᓂᐳᑦᓂᑦ ᐳᓂᐳᑦᓂᑦ ᐳᓂᐳᑦᓂᑦ ᐳᓂᐳᑦᓂᑦ	148	299	299
Trades Program Provides funding for trades program development and delivery.			
ᐳᓂᐳᑦᓂᑦ ᐳᓂᐳᑦᓂᑦ Total Contributions	15,862	16,015	14,767
ᐳᓂᐳᑦᓂᑦ ᐳᓂᐳᑦᓂᑦ ᐳᓂᐳᑦᓂᑦ Total Grants and Contributions	19,504	19,657	18,409

ᐃᑦᑲᑦᑲᑦᑲᑦ ᐃᑦᑲᑦᑲᑦᑲᑦ ᐅᑦᑲᑦᑲᑦᑲᑦ ᐃᑦᑲᑦᑲᑦᑲᑦ ᐅᑦᑲᑦᑲᑦᑲᑦ
STUDENT LOAN FUND

		ᐅᑦᑲᑦᑲᑦᑲᑦ ᐃᑦᑲᑦᑲᑦᑲᑦ 2003-2004 Main Estimates (\$000)	ᐃᑦᑲᑦᑲᑦᑲᑦ ᐃᑦᑲᑦᑲᑦᑲᑦ 2002-2003 Revised Estimates (\$000)	ᐅᑦᑲᑦᑲᑦᑲᑦ ᐃᑦᑲᑦᑲᑦᑲᑦ 2002-2003 Main Estimates (\$000)
ᐃᑦᑲᑦᑲᑦᑲᑦᑲᑦ ᐅᑦᑲᑦᑲᑦᑲᑦᑲᑦ				
	Statement of Operations			
ᐃᑦᑲᑦᑲᑦᑲᑦᑲᑦ ᐅᑦᑲᑦᑲᑦᑲᑦᑲᑦ, ᐃᑦᑲᑦᑲᑦᑲᑦᑲᑦ	Loans Receivable, Opening Balance	2,865	2,690	2,690
ᐃᑦᑲᑦᑲᑦᑲᑦᑲᑦ:	Add:			
ᐃᑦᑲᑦᑲᑦᑲᑦᑲᑦ ᐃᑦᑲᑦᑲᑦᑲᑦᑲᑦ ᐃᑦᑲᑦᑲᑦᑲᑦᑲᑦ	Loans granted during the year	600	500	500
ᐃᑦᑲᑦᑲᑦᑲᑦᑲᑦ ᐃᑦᑲᑦᑲᑦᑲᑦᑲᑦᑲᑦ	Reversal of previous loan remissions	-	-	-
		600	500	500
ᐃᑦᑲᑦᑲᑦᑲᑦᑲᑦ:	Less:			
ᐃᑦᑲᑦᑲᑦᑲᑦᑲᑦ ᐃᑦᑲᑦᑲᑦᑲᑦᑲᑦᑲᑦ ᐃᑦᑲᑦᑲᑦᑲᑦᑲᑦ	Principle amount of loans repaid	125	125	125
ᐃᑦᑲᑦᑲᑦᑲᑦᑲᑦ ᐃᑦᑲᑦᑲᑦᑲᑦᑲᑦᑲᑦ	Principle amount of loans written off	-	-	-
ᐃᑦᑲᑦᑲᑦᑲᑦᑲᑦᑲᑦ ᐃᑦᑲᑦᑲᑦᑲᑦᑲᑦᑲᑦ	Principle amount of loan remission	300	200	200
		425	325	325
ᐃᑦᑲᑦᑲᑦᑲᑦᑲᑦ ᐃᑦᑲᑦᑲᑦᑲᑦᑲᑦ, ᐃᑦᑲᑦᑲᑦᑲᑦᑲᑦ	Loans Receivable, Closing Balance	3,040	2,865	2,865
ᐃᑦᑲᑦᑲᑦᑲᑦᑲᑦ:	Less:			
ᐃᑦᑲᑦᑲᑦᑲᑦᑲᑦᑲᑦᑲᑦᑲᑦᑲᑦ ᐃᑦᑲᑦᑲᑦᑲᑦᑲᑦᑲᑦ	Estimated provision for remission and doubtful accounts	1,725	1,600	1,600
ᐃᑦᑲᑦᑲᑦᑲᑦᑲᑦᑲᑦ ᐃᑦᑲᑦᑲᑦᑲᑦᑲᑦᑲᑦ	Net Loans Receivable, Closing Balance	1,315	1,265	1,265
ᐃᑦᑲᑦᑲᑦᑲᑦᑲᑦ ᐃᑦᑲᑦᑲᑦᑲᑦᑲᑦ ᐃᑦᑲᑦᑲᑦᑲᑦᑲᑦ ᐃᑦᑲᑦᑲᑦᑲᑦᑲᑦ				
	Effect of the Student Loan Revolving Fund on Government Operations			
ᐃᑦᑲᑦᑲᑦᑲᑦᑲᑦᑲᑦ ᐃᑦᑲᑦᑲᑦᑲᑦᑲᑦᑲᑦ ᐃᑦᑲᑦᑲᑦᑲᑦᑲᑦᑲᑦ	Interest earned and credited to general revenues	20	10	10
ᐃᑦᑲᑦᑲᑦᑲᑦᑲᑦᑲᑦ ᐃᑦᑲᑦᑲᑦᑲᑦᑲᑦᑲᑦᑲᑦ	Less:			
ᐃᑦᑲᑦᑲᑦᑲᑦᑲᑦᑲᑦ ᐃᑦᑲᑦᑲᑦᑲᑦᑲᑦᑲᑦᑲᑦ ᐃᑦᑲᑦᑲᑦᑲᑦᑲᑦᑲᑦ	Financial collection agency fees	-	-	-
ᐃᑦᑲᑦᑲᑦᑲᑦᑲᑦᑲᑦᑲᑦ ᐃᑦᑲᑦᑲᑦᑲᑦᑲᑦᑲᑦᑲᑦ	Estimated provision for remission and doubtful accounts	(425)	(290)	(290)
		(425)	(290)	(290)
ᐃᑦᑲᑦᑲᑦᑲᑦᑲᑦᑲᑦ ᐃᑦᑲᑦᑲᑦᑲᑦᑲᑦᑲᑦ	Operating deficiency for the year	(405)	(280)	(280)

ᐃᑦᓂᐳᑦᓂᑦᓂᑦᓂᑦ ᐃᑦᓂᐳᑦᓂᑦᓂᑦ ᐱᑦᓂᑦᓂᑦᓂᑦᓂᑦ ᐱᑦᓂᑦᓂᑦᓂᑦ
CAREER AND EARLY CHILDHOOD SERVICES

	ᓂᐳᑦᓂᑦᓂᑦᓂᑦ ᐃᑦᓂᐳᑦᓂᑦᓂᑦ 2003-2004 Main Estimates (\$000)	ᐳᑦᓂᐳᑦᓂᑦᓂᑦ ᐳᑦᓂᐳᑦᓂᑦᓂᑦ 2002-2003 Revised Estimates (\$000)	ᓂᐳᑦᓂᑦᓂᑦᓂᑦ ᐳᑦᓂᐳᑦᓂᑦᓂᑦ 2002-2003 Main Estimates (\$000)
ᓂᐳᑦᓂᑦᓂᑦᓂᑦ ᐃᑦᓂᐳᑦᓂᑦᓂᑦ Grants and Contributions			
ᐃᑦᓂᐳᑦᓂᑦᓂᑦ Contributions			
ᐃᑦᓂᐳᑦᓂᑦᓂᑦᓂᑦ ᐳᑦᓂᐳᑦᓂᑦᓂᑦᓂᑦ ᐳᑦᓂᐳᑦᓂᑦᓂᑦᓂᑦ ᐳᑦᓂᐳᑦᓂᑦᓂᑦᓂᑦ ᐳᑦᓂᐳᑦᓂᑦᓂᑦᓂᑦ ᐳᑦᓂᐳᑦᓂᑦᓂᑦᓂᑦ ᐳᑦᓂᐳᑦᓂᑦᓂᑦᓂᑦ ᐳᑦᓂᐳᑦᓂᑦᓂᑦᓂᑦ ᐳᑦᓂᐳᑦᓂᑦᓂᑦᓂᑦ ᐳᑦᓂᐳᑦᓂᑦᓂᑦᓂᑦ			
Literacy In partnership with community organizations, provides funding for the development and implementation of literacy programs across Nunavut in order to increase the literacy levels.	75	75	75
ᓂᐳᑦᓂᑦᓂᑦᓂᑦ ᐃᑦᓂᐳᑦᓂᑦᓂᑦ - ᐳᑦᓂᐳᑦᓂᑦᓂᑦᓂᑦ ᐳᑦᓂᐳᑦᓂᑦᓂᑦᓂᑦᓂᑦ ᐳᑦᓂᐳᑦᓂᑦᓂᑦᓂᑦ ᐳᑦᓂᐳᑦᓂᑦᓂᑦᓂᑦ ᐳᑦᓂᐳᑦᓂᑦᓂᑦᓂᑦ ᐳᑦᓂᐳᑦᓂᑦᓂᑦᓂᑦ ᐳᑦᓂᐳᑦᓂᑦᓂᑦᓂᑦ	1,773	1,773	1,773
Early Childhood Programs - Daycare Grants Provides both financial and developmental support to child daycare centres and family day homes.			
ᓂᐳᑦᓂᑦᓂᑦᓂᑦ ᐃᑦᓂᐳᑦᓂᑦᓂᑦ - ᓂᐳᑦᓂᑦᓂᑦᓂᑦ ᐳᑦᓂᐳᑦᓂᑦᓂᑦᓂᑦ ᐳᑦᓂᐳᑦᓂᑦᓂᑦ ᐳᑦᓂᐳᑦᓂᑦᓂᑦᓂᑦᓂᑦ ᐳᑦᓂᐳᑦᓂᑦᓂᑦᓂᑦ ᐳᑦᓂᐳᑦᓂᑦᓂᑦᓂᑦ ᐳᑦᓂᐳᑦᓂᑦᓂᑦᓂᑦᓂᑦ ᐳᑦᓂᐳᑦᓂᑦᓂᑦᓂᑦ ᐳᑦᓂᐳᑦᓂᑦᓂᑦᓂᑦ	1,533	1,533	1,533
Early Childhood Programs - Healthy Children Initiative Provides for promotion of raising healthy children from conceptions to age 6.			

ᐃᑦᓂᐃᑦᓂᑦᓂᑦᓂᑦ ᐃᑦᓂᑦᓂᑦᓂᑦ ᐱᑦᓂᑦᓂᑦᓂᑦ ᐱᑦᓂᑦᓂᑦᓂᑦ CAREER AND EARLY CHILDHOOD SERVICES

	ᐃᑦᓂᑦᓂᑦᓂᑦᓂᑦ ᐃᑦᓂᑦᓂᑦᓂᑦᓂᑦ	ᐃᑦᓂᑦᓂᑦᓂᑦᓂᑦ ᐃᑦᓂᑦᓂᑦᓂᑦᓂᑦ	ᐃᑦᓂᑦᓂᑦᓂᑦᓂᑦ ᐃᑦᓂᑦᓂᑦᓂᑦᓂᑦ
	2003-2004 Main Estimates (\$000)	2002-2003 Revised Estimates (\$000)	2002-2003 Main Estimates (\$000)
ᐃᑦᓂᑦᓂᑦᓂᑦᓂᑦ ᐃᑦᓂᑦᓂᑦᓂᑦ			
ᐃᑦᓂᑦᓂᑦᓂᑦᓂᑦ (cont'd.)			
ᐱᑦᓂᑦᓂᑦᓂᑦᓂᑦ ᓂᐃᑦᓂᑦ ᐃᑦᓂᑦᓂᑦᓂᑦᓂᑦᓂᑦ ᐃᑦᓂᑦᓂᑦᓂᑦᓂᑦᓂᑦ ᐃᑦᓂᑦᓂᑦᓂᑦᓂᑦᓂᑦ ᓂᐃᑦᓂᑦ ᐃᑦᓂᑦᓂᑦᓂᑦᓂᑦᓂᑦ ᐃᑦᓂᑦᓂᑦᓂᑦᓂᑦᓂᑦ ᐃᑦᓂᑦᓂᑦᓂᑦᓂᑦᓂᑦ ᐃᑦᓂᑦᓂᑦᓂᑦᓂᑦᓂᑦ ᓂᐃᑦᓂᑦ.	20	20	-
Skills Canada Contribution to encourage participation of Nunavummiut in the trades and technology fields in the annual Skills Canada competition.			
ᐃᑦᓂᑦᓂᑦᓂᑦᓂᑦᓂᑦ ᐃᑦᓂᑦᓂᑦᓂᑦᓂᑦᓂᑦ ᐃᑦᓂᑦᓂᑦᓂᑦᓂᑦ ᐃᑦᓂᑦᓂᑦᓂᑦᓂᑦᓂᑦᓂᑦ ᐃᑦᓂᑦᓂᑦᓂᑦᓂᑦᓂᑦ ᐃᑦᓂᑦᓂᑦᓂᑦᓂᑦᓂᑦ ᓂᐃᑦᓂᑦ ᐃᑦᓂᑦᓂᑦᓂᑦᓂᑦᓂᑦᓂᑦ ᐃᑦᓂᑦᓂᑦᓂᑦᓂᑦᓂᑦ ᐃᑦᓂᑦᓂᑦᓂᑦᓂᑦᓂᑦ ᐃᑦᓂᑦᓂᑦᓂᑦᓂᑦᓂᑦ ᐃᑦᓂᑦᓂᑦᓂᑦᓂᑦᓂᑦᓂᑦ ᐃᑦᓂᑦᓂᑦᓂᑦᓂᑦᓂᑦ.	15	-	-
Northern Student Education Initiative Contribution to provide support services to students from Nunavut who attend post secondary institutions and training programs in the Edmonton area.			
ᓂᐃᑦᓂᑦᓂᑦᓂᑦᓂᑦᓂᑦ Total Contributions	3,416	3,401	3,381
ᓂᐃᑦᓂᑦᓂᑦᓂᑦᓂᑦᓂᑦᓂᑦ Total Grants and Contributions	3,416	3,401	3,381

ᐃᑦᑎᐃᑦᑕᑦᑎᐃᑦ ᐱᑦᑕᑦᑎᐃᑦ

ᑕᑦᑎ ᐱᑦᑎᐃᑦᑕᑦᑎᐃᑦ ᐱᑦᑕᑦᑎᐃᑦᑕᑦᑎᐃᑦ ᐅᑦᑕᑦᑎᐃᑦ: ᐱᑦᑕᑦᑎᐃᑦᑕᑦᑎᐃᑦ, ᐃᑦᑕᑦᑎᐃᑦᑕᑦᑎᐃᑦ ᐃᑦᑎ ᐱᑦᑎᐃᑦᑕᑦᑎᐃᑦ ᐱᑦᑕᑦᑎᐃᑦᑕᑦᑎᐃᑦ ᐃᑦᑎᐃᑦᑕᑦᑎᐃᑦ ᑎᑦᑎᐃᑦ ᐃᑦᑎᐃᑦᑕᑦᑎᐃᑦ 12-ᑕᑦ ᐃᑦᑎᐃᑦᑕᑦᑎᐃᑦᑕᑦᑎᐃᑦ, ᐱᑦᑕᑦᑎᐃᑦᑕᑦᑎᐃᑦ ᐃᑦᑎ ᐱᑦᑎᐃᑦᑕᑦᑎᐃᑦ ᐃᑦᑎᐃᑦᑕᑦᑎᐃᑦ ᐃᑦᑎᐃᑦᑕᑦᑎᐃᑦ. ᐱᑦᑎᐃᑦᑕᑦᑎᐃᑦ ᐃᑦᑎᐃᑦᑕᑦᑎᐃᑦ ᐃᑦᑎᐃᑦᑕᑦᑎᐃᑦ ᐃᑦᑎᐃᑦᑕᑦᑎᐃᑦ, ᐃᑦᑎᐃᑦᑕᑦᑎᐃᑦ ᐃᑦᑎᐃᑦᑕᑦᑎᐃᑦ ᐃᑦᑎᐃᑦᑕᑦᑎᐃᑦ ᐃᑦᑎᐃᑦᑕᑦᑎᐃᑦ, ᐃᑦᑎᐃᑦᑕᑦᑎᐃᑦ ᐃᑦᑎᐃᑦᑕᑦᑎᐃᑦ ᐃᑦᑎᐃᑦᑕᑦᑎᐃᑦ ᐃᑦᑎᐃᑦᑕᑦᑎᐃᑦ ᐃᑦᑎᐃᑦᑕᑦᑎᐃᑦ ᐃᑦᑎᐃᑦᑕᑦᑎᐃᑦ ᐃᑦᑎᐃᑦᑕᑦᑎᐃᑦ ᐃᑦᑎᐃᑦᑕᑦᑎᐃᑦ ᐃᑦᑎᐃᑦᑕᑦᑎᐃᑦ ᐃᑦᑎᐃᑦᑕᑦᑎᐃᑦ ᐃᑦᑎᐃᑦᑕᑦᑎᐃᑦ ᐃᑦᑎᐃᑦᑕᑦᑎᐃᑦ ᐃᑦᑎᐃᑦᑕᑦᑎᐃᑦ ᐃᑦᑎᐃᑦᑕᑦᑎᐃᑦ.

ᑕᑦᑎᐃᑦᑕᑦᑎᐃᑦ ᐃᑦᑎᐃᑦᑕᑦᑎᐃᑦ ᐱᑦᑕᑦᑎᐃᑦᑕᑦᑎᐃᑦ ᐱᑦᑕᑦᑎᐃᑦᑕᑦᑎᐃᑦ ᐃᑦᑎ ᐃᑦᑎᐃᑦᑕᑦᑎᐃᑦ ᐱᑦᑕᑦᑎᐃᑦᑕᑦᑎᐃᑦ ᐃᑦᑎᐃᑦᑕᑦᑎᐃᑦ ᐃᑦᑎᐃᑦᑕᑦᑎᐃᑦ.

CURRICULUM AND SCHOOL SERVICES

This division provides overall direction and administration for curriculum and program development, Student Support and DEA Development. It includes implementation and assessment of Kindergarten to Grade 12 curricula and development and production of resources and materials. It also deals with implementation of the bilingual language policies, accreditation of new programs, monitoring and evaluating student achievement and teacher certification.

The Teaching and Learning Centres are now incorporated into the Curriculum and School Services and are responsible for program and material development in Inuktitut and Inuinnaqtun.

ᑕᑦᑎᐃᑦᑕᑦᑎᐃᑦ	DESCRIPTION	ᑕᑦᑎᐃᑦᑕᑦᑎᐃᑦ (ᑕᑦᑎᐃᑦᑕᑦᑎᐃᑦ)	ᑕᑦᑎᐃᑦᑕᑦᑎᐃᑦ (ᑕᑦᑎᐃᑦᑕᑦᑎᐃᑦ)	ᑕᑦᑎᐃᑦᑕᑦᑎᐃᑦ (ᑕᑦᑎᐃᑦᑕᑦᑎᐃᑦ)
		2003-2004 Main Estimates (\$000)	2002-2003 Revised Estimates (\$000)	2002-2003 Main Estimates (\$000)
ᐃᑦᑎᐃᑦᑕᑦᑎᐃᑦ ᐃᑦᑎᐃᑦᑕᑦᑎᐃᑦ ᐃᑦᑎᐃᑦᑕᑦᑎᐃᑦ	Compensation and Benefits	2,909	2,554	2,173
ᑕᑦᑎᐃᑦᑕᑦᑎᐃᑦ ᐃᑦᑎ ᐃᑦᑎᐃᑦᑕᑦᑎᐃᑦ	Grants and Contributions	3,649	3,522	3,512
ᑕᑦᑎᐃᑦᑕᑦᑎᐃᑦ ᐃᑦᑎᐃᑦᑕᑦᑎᐃᑦ	Travel and Transportation	940	548	333
ᑕᑦᑎᐃᑦᑕᑦᑎᐃᑦ ᐃᑦᑎᐃᑦᑕᑦᑎᐃᑦ	Materials and Supplies	698	490	385
ᑕᑦᑎᐃᑦᑕᑦᑎᐃᑦ ᐃᑦᑎᐃᑦᑕᑦᑎᐃᑦ	Purchased Services	222	264	208
ᑕᑦᑎᐃᑦᑕᑦᑎᐃᑦ ᐃᑦᑎᐃᑦᑕᑦᑎᐃᑦ	Utilities	-	-	-
ᑕᑦᑎᐃᑦᑕᑦᑎᐃᑦ ᐃᑦᑎᐃᑦᑕᑦᑎᐃᑦ	Contract Services	345	415	345
ᑕᑦᑎᐃᑦᑕᑦᑎᐃᑦ ᐃᑦᑎᐃᑦᑕᑦᑎᐃᑦ	Fees and Payments	56	66	66
ᑕᑦᑎᐃᑦᑕᑦᑎᐃᑦ ᐃᑦᑎᐃᑦᑕᑦᑎᐃᑦ	Other Expenses	28	8	8
ᑕᑦᑎᐃᑦᑕᑦᑎᐃᑦ ᐃᑦᑎᐃᑦᑕᑦᑎᐃᑦ ᐃᑦᑎᐃᑦᑕᑦᑎᐃᑦ	Total Operations & Maintenance	8,847	7,867	7,030
ᑕᑦᑎᐃᑦᑕᑦᑎᐃᑦ ᐃᑦᑎᐃᑦᑕᑦᑎᐃᑦ	Total Capital	-	-	-
ᑕᑦᑎᐃᑦᑕᑦᑎᐃᑦ ᐃᑦᑎᐃᑦᑕᑦᑎᐃᑦ	Total Expenditures	8,847	7,867	7,030

ᐃᑦᓂᐳᑦᓂᑦᓂᑦ ᐱᑦᓂᑦᓂᑦᓂᑦ
CURRICULUM AND SCHOOL SERVICES

	ᐱᑦᓂᑦᓂᑦᓂᑦ ᐳᑦᓂᑦᓂᑦᓂᑦ 2003-2004 Main Estimates (\$000)	ᐳᑦᓂᑦᓂᑦᓂᑦ ᐳᑦᓂᑦᓂᑦᓂᑦ 2002-2003 Revised Estimates (\$000)	ᐱᑦᓂᑦᓂᑦᓂᑦ ᐳᑦᓂᑦᓂᑦᓂᑦ 2002-2003 Main Estimates (\$000)
ᐳᑦᓂᑦᓂᑦᓂᑦ ᐳᑦᓂᑦᓂᑦᓂᑦ Grants and Contributions			
ᐳᑦᓂᑦᓂᑦᓂᑦ Contributions			
ᐳᑦᓂᑦᓂᑦᓂᑦ ᐳᑦᓂᑦᓂᑦᓂᑦ ᐳᑦᓂᑦᓂᑦᓂᑦ ᐳᑦᓂᑦᓂᑦᓂᑦᓂᑦᓂᑦᓂᑦᓂᑦᓂᑦᓂᑦᓂᑦᓂᑦᓂᑦᓂᑦ ᐳᑦᓂᑦᓂᑦᓂᑦᓂᑦᓂᑦᓂᑦᓂᑦᓂᑦᓂᑦᓂᑦᓂᑦᓂᑦᓂᑦ ᐳᑦᓂᑦᓂᑦᓂᑦᓂᑦᓂᑦᓂᑦᓂᑦᓂᑦᓂᑦᓂᑦᓂᑦᓂᑦᓂᑦ	1,879	1,879	1,995
Teacher Education Strategy Provides support for ongoing community based teacher education program delivery. Funding for teacher certification for Nunavummiut.			
ᐳᑦᓂᑦᓂᑦᓂᑦ ᐳᑦᓂᑦᓂᑦᓂᑦᓂᑦᓂᑦᓂᑦᓂᑦᓂᑦ ᓂᐳᑦᓂᑦᓂᑦᓂᑦᓂᑦᓂᑦᓂᑦᓂᑦᓂᑦᓂᑦᓂᑦᓂᑦᓂᑦ ᐳᑦᓂᑦᓂᑦᓂᑦᓂᑦᓂᑦᓂᑦᓂᑦᓂᑦᓂᑦᓂᑦᓂᑦᓂᑦᓂᑦ ᐳᑦᓂᑦᓂᑦᓂᑦᓂᑦᓂᑦᓂᑦᓂᑦᓂᑦᓂᑦᓂᑦᓂᑦᓂᑦᓂᑦ	1,770	1,643	1,517
Teachers' Professional Development Defined in the Federation of Nunavut Teachers Collective Agreement. Provides ongoing financial support for the professional development of teachers.			
ᐳᑦᓂᑦᓂᑦᓂᑦ ᐳᑦᓂᑦᓂᑦᓂᑦ Total Contributions	3,649	3,522	3,512
ᐳᑦᓂᑦᓂᑦᓂᑦ ᐳᑦᓂᑦᓂᑦᓂᑦ ᐳᑦᓂᑦᓂᑦᓂᑦ Total Grants and Contributions	3,649	3,522	3,512

Δᓕᓐᓄᓐᓄᓐᓄᓐ ᐱᐃᓕᓄᓐᓄᓐ
 SCHOOL OPERATIONS

	ᐆᓄᐃᓄᓐ ᐱᐃᓄᓐᓄᓐ	ᐱᓄᐆᓄᓐᓄᓐᓄᓐ ᐱᓄᓄᓐᓄᓐᓄᓐ	ᐆᓄᐃᓄᓐ ᐱᓄᓄᓐᓄᓐᓄᓐ
	2003-2004 Main Estimates (\$000)	2002-2003 Revised Estimates (\$000)	2002-2003 Main Estimates (\$000)
ᐃᓄᐃᓄᓐᓄᓐ ᐱᓄᐃᓄᓐ Grants and Contributions			
ᐱᓄᐃᓄᓐᓄᓐ Contributions			
ᓄᓄᓄᓄᓐ ᐱᓕᓐᓄᓐᓄᓐᓄᓐᓄᓐ ᐆᓂᓄᓄᓐᓄᓐ ᐱᓄᐃᓄᓐᓄᓐ ᐱᓄᐃᓄᓐᓄᓐᓄᓐᓄᓐ ᓄᓄᓄᓄᓐ ᐱᓕᓐᓄᓐᓄᓐᓄᓐᓄᓐ ᐆᓂᓄᓄᓐᓄᓐ ᐱᐃᓕᓄᓐᓄᓐᓄᓐ ᐱᐆᓄᓄᓐ ᐱᓄᓄᓐᓄᓐ ᐱᓕᓐᓄᓐᓄᓐᓄᓐ ᐱᐃᓕᓄᓐᓄᓐᓄᓐᓄᓐ ᐱᓕᓐᓄᓐᓄᓐᓄᓐᓄᓐ ᐱᐆᓄᓄᓐᓄᓐᓄᓐᓄᓐ	9,867	9,972	9,315
DEA Contributions Contributions to District Education Authorities for authority administration costs and for a portion of the operating expenses of schools.			
ᐆᓂᓄᓄᓐᓄᓐ ᐱᓄᐃᓄᓐᓄᓐ Total Contributions	9,867	9,972	9,315
ᐆᓂᓄᓄᓐᓄᓐ ᐃᓄᐃᓄᓐᓄᓐᓄᓐ ᐱᓄᐃᓄᓐᓄᓐ Total Grants and Contributions	9,867	9,972	9,315

ᓂᑦᓂᑦᓂᑦᓂᑦᓂᑦ ᐳᑦᓂᑦᓂᑦᓂᑦᓂᑦ ᐳᑦᓂᑦᓂᑦᓂᑦ ᐳᑦᓂᑦᓂᑦᓂᑦ
DETAIL OF WORK PERFORMED ON BEHALF OF THIRD PARTIES

	ᓂᑦᓂᑦᓂᑦᓂᑦᓂᑦ ᐳᑦᓂᑦᓂᑦᓂᑦᓂᑦ 2003-2004 Main Estimates (\$000)	ᐳᑦᓂᑦᓂᑦᓂᑦᓂᑦ ᐳᑦᓂᑦᓂᑦᓂᑦᓂᑦ 2002-2003 Revised Estimates (\$000)	ᓂᑦᓂᑦᓂᑦᓂᑦᓂᑦ ᐳᑦᓂᑦᓂᑦᓂᑦᓂᑦ 2002-2003 Main Estimates (\$000)
ᓂᑦᓂᑦᓂᑦᓂᑦᓂᑦᓂᑦ ᐳᑦᓂᑦᓂᑦᓂᑦᓂᑦ ᐳᑦᓂᑦᓂᑦᓂᑦᓂᑦ ᐱᑦᓂᑦᓂᑦᓂᑦᓂᑦᓂᑦᓂᑦ ᐳᑦᓂᑦᓂᑦᓂᑦᓂᑦ ᐳᑦᓂᑦᓂᑦᓂᑦᓂᑦ ᐳᑦᓂᑦᓂᑦᓂᑦᓂᑦ ᐳᑦᓂᑦᓂᑦᓂᑦᓂᑦᓂᑦ ᐳᑦᓂᑦᓂᑦᓂᑦᓂᑦᓂᑦ ᐳᑦᓂᑦᓂᑦᓂᑦᓂᑦᓂᑦ ᐳᑦᓂᑦᓂᑦᓂᑦᓂᑦ ᐳᑦᓂᑦᓂᑦᓂᑦᓂᑦᓂᑦᓂᑦ ᐳᑦᓂᑦᓂᑦᓂᑦᓂᑦᓂᑦ ᐳᑦᓂᑦᓂᑦᓂᑦᓂᑦᓂᑦ	-	22	-
Grassroots Program Partnership between Government of Canada and Government of Nunavut to support the creation and development of collaborative website projects by Nunavut students.			
ᓂᑦᓂᑦᓂᑦᓂᑦᓂᑦᓂᑦ ᐳᑦᓂᑦᓂᑦᓂᑦᓂᑦᓂᑦ ᐳᑦᓂᑦᓂᑦᓂᑦᓂᑦ ᐱᑦᓂᑦᓂᑦᓂᑦᓂᑦᓂᑦᓂᑦ ᐳᑦᓂᑦᓂᑦᓂᑦᓂᑦᓂᑦ ᐳᑦᓂᑦᓂᑦᓂᑦᓂᑦᓂᑦ ᐳᑦᓂᑦᓂᑦᓂᑦᓂᑦ ᐳᑦᓂᑦᓂᑦᓂᑦᓂᑦᓂᑦᓂᑦ ᐳᑦᓂᑦᓂᑦᓂᑦᓂᑦᓂᑦ ᐳᑦᓂᑦᓂᑦᓂᑦᓂᑦᓂᑦ ᐳᑦᓂᑦᓂᑦᓂᑦᓂᑦ ᐳᑦᓂᑦᓂᑦᓂᑦᓂᑦᓂᑦᓂᑦ ᐳᑦᓂᑦᓂᑦᓂᑦᓂᑦᓂᑦ ᐳᑦᓂᑦᓂᑦᓂᑦᓂᑦᓂᑦ	-	109	-
Gates Foundation Public Libraries Program Partnership between Bill and Melinda Gates Foundation and Government of Nunavut to provide computer hardware, software and training for public libraries serving low-income communities in Nunavut.			
ᐳᑦᓂᑦᓂᑦᓂᑦᓂᑦᓂᑦ ᐳᑦᓂᑦᓂᑦᓂᑦᓂᑦᓂᑦ ᐱᑦᓂᑦᓂᑦᓂᑦᓂᑦᓂᑦᓂᑦ ᐳᑦᓂᑦᓂᑦᓂᑦᓂᑦᓂᑦ ᐳᑦᓂᑦᓂᑦᓂᑦᓂᑦᓂᑦ ᐳᑦᓂᑦᓂᑦᓂᑦᓂᑦ ᐳᑦᓂᑦᓂᑦᓂᑦᓂᑦᓂᑦᓂᑦ ᐳᑦᓂᑦᓂᑦᓂᑦᓂᑦᓂᑦ ᐳᑦᓂᑦᓂᑦᓂᑦᓂᑦᓂᑦ	-	40	-
Computers for Schools Partnership between Government of Canada and Government of Nunavut to refurbish and deliver donated computers to schools and libraries.			
ᐳᑦᓂᑦᓂᑦᓂᑦᓂᑦᓂᑦ ᐳᑦᓂᑦᓂᑦᓂᑦᓂᑦᓂᑦ ᐱᑦᓂᑦᓂᑦᓂᑦᓂᑦᓂᑦᓂᑦ ᐳᑦᓂᑦᓂᑦᓂᑦᓂᑦᓂᑦ ᐳᑦᓂᑦᓂᑦᓂᑦᓂᑦᓂᑦ ᐳᑦᓂᑦᓂᑦᓂᑦᓂᑦ ᐳᑦᓂᑦᓂᑦᓂᑦᓂᑦᓂᑦᓂᑦ ᐳᑦᓂᑦᓂᑦᓂᑦᓂᑦᓂᑦ ᐳᑦᓂᑦᓂᑦᓂᑦᓂᑦᓂᑦ	-	28	-
Sign Language Training Partnership between Government of Canada and Government of Nunavut for Sign Language Training.			

ᐱᑦᓂᐳᑦᓂᑦ ᐱᑦᓂᐳᑦᓂᑦ ᐱᑦᓂᐳᑦᓂᑦ ᐱᑦᓂᐳᑦᓂᑦ
DETAIL OF WORK PERFORMED ON BEHALF OF THIRD PARTIES

	ᑭᐱᑦᓂᐳᑦᓂᑦ ᐱᑦᓂᐳᑦᓂᑦ 2003-2004 Main Estimates (\$000)	ᐱᑦᓂᐳᑦᓂᑦ ᐱᑦᓂᐳᑦᓂᑦ ᐱᑦᓂᐳᑦᓂᑦ 2002-2003 Revised Estimates (\$000)	ᑭᐱᑦᓂᐳᑦᓂᑦ ᐱᑦᓂᐳᑦᓂᑦ 2002-2003 Main Estimates (\$000)
<p>ᐱᑦᓂᐳᑦᓂᑦ ᐱᑦᓂᐳᑦᓂᑦ ᐱᑦᓂᐳᑦᓂᑦ ᐱᑦᓂᐳᑦᓂᑦ ᐱᑦᓂᐳᑦᓂᑦ ᐱᑦᓂᐳᑦᓂᑦ ᐱᑦᓂᐳᑦᓂᑦ ᐱᑦᓂᐳᑦᓂᑦ ᐱᑦᓂᐳᑦᓂᑦ ᐱᑦᓂᐳᑦᓂᑦ ᐱᑦᓂᐳᑦᓂᑦ ᐱᑦᓂᐳᑦᓂᑦ ᐱᑦᓂᐳᑦᓂᑦ ᐱᑦᓂᐳᑦᓂᑦ ᐱᑦᓂᐳᑦᓂᑦ ᐱᑦᓂᐳᑦᓂᑦ ᐱᑦᓂᐳᑦᓂᑦ ᐱᑦᓂᐳᑦᓂᑦ ᐱᑦᓂᐳᑦᓂᑦ ᐱᑦᓂᐳᑦᓂᑦ ᐱᑦᓂᐳᑦᓂᑦ ᐱᑦᓂᐳᑦᓂᑦ</p>	-	329	-
<p>Older Worker's Pilot Project Initiative Partnership between Government of Canada and Government of Nunavut to provide older workers between ages 55 and 64 with an opportunity to obtain skills, services and support in finding employment.</p>			
<p>ᐱᑦᓂᐳᑦᓂᑦ ᐱᑦᓂᐳᑦᓂᑦ ᐱᑦᓂᐳᑦᓂᑦ ᐱᑦᓂᐳᑦᓂᑦ ᐱᑦᓂᐳᑦᓂᑦ ᐱᑦᓂᐳᑦᓂᑦ ᐱᑦᓂᐳᑦᓂᑦ ᐱᑦᓂᐳᑦᓂᑦ ᐱᑦᓂᐳᑦᓂᑦ ᐱᑦᓂᐳᑦᓂᑦ ᐱᑦᓂᐳᑦᓂᑦ ᐱᑦᓂᐳᑦᓂᑦ ᐱᑦᓂᐳᑦᓂᑦ ᐱᑦᓂᐳᑦᓂᑦ ᐱᑦᓂᐳᑦᓂᑦ ᐱᑦᓂᐳᑦᓂᑦ ᐱᑦᓂᐳᑦᓂᑦ ᐱᑦᓂᐳᑦᓂᑦ ᐱᑦᓂᐳᑦᓂᑦ ᐱᑦᓂᐳᑦᓂᑦ</p>	-	12	-
<p>Historica Partnership between Government of Canada and Historica Foundation to develop and expand participation in the Heritage Fair Program.</p>			
<p>ᐱᑦᓂᐳᑦᓂᑦ ᐱᑦᓂᐳᑦᓂᑦ ᐱᑦᓂᐳᑦᓂᑦ ᐱᑦᓂᐳᑦᓂᑦ ᐱᑦᓂᐳᑦᓂᑦ ᐱᑦᓂᐳᑦᓂᑦ ᐱᑦᓂᐳᑦᓂᑦ ᐱᑦᓂᐳᑦᓂᑦ ᐱᑦᓂᐳᑦᓂᑦ ᐱᑦᓂᐳᑦᓂᑦ ᐱᑦᓂᐳᑦᓂᑦ ᐱᑦᓂᐳᑦᓂᑦ ᐱᑦᓂᐳᑦᓂᑦ ᐱᑦᓂᐳᑦᓂᑦ ᐱᑦᓂᐳᑦᓂᑦ ᐱᑦᓂᐳᑦᓂᑦ ᐱᑦᓂᐳᑦᓂᑦ ᐱᑦᓂᐳᑦᓂᑦ ᐱᑦᓂᐳᑦᓂᑦ ᐱᑦᓂᐳᑦᓂᑦ ᐱᑦᓂᐳᑦᓂᑦ ᐱᑦᓂᐳᑦᓂᑦ</p>	-	49	-
<p>Community Access Program - Youth Initiative Partnership between Government of Canada and Government of Nunavut to engage Canadian Youth in information, communication and internet technologies and accelerate the use of internet through Community Access Centres throughout Nunavut.</p>			
<p>ᐱᑦᓂᐳᑦᓂᑦ ᐱᑦᓂᐳᑦᓂᑦ ᐱᑦᓂᐳᑦᓂᑦ ᐱᑦᓂᐳᑦᓂᑦ ᐱᑦᓂᐳᑦᓂᑦ ᐱᑦᓂᐳᑦᓂᑦ ᐱᑦᓂᐳᑦᓂᑦ ᐱᑦᓂᐳᑦᓂᑦ ᐱᑦᓂᐳᑦᓂᑦ ᐱᑦᓂᐳᑦᓂᑦ ᐱᑦᓂᐳᑦᓂᑦ ᐱᑦᓂᐳᑦᓂᑦ ᐱᑦᓂᐳᑦᓂᑦ ᐱᑦᓂᐳᑦᓂᑦ ᐱᑦᓂᐳᑦᓂᑦ ᐱᑦᓂᐳᑦᓂᑦ ᐱᑦᓂᐳᑦᓂᑦ ᐱᑦᓂᐳᑦᓂᑦ ᐱᑦᓂᐳᑦᓂᑦ ᐱᑦᓂᐳᑦᓂᑦ ᐱᑦᓂᐳᑦᓂᑦ</p>	75	107	-
<p>Centre of Excellence Program Partnership between Lakehead University and the Government of Nunavut to establish a Centre of Excellence for Children and Adolescents with Special Needs.</p>			
ᐱᑦᓂᐳᑦᓂᑦ ᐱᑦᓂᐳᑦᓂᑦ Total Department	3,830	5,167	3,858

ᐃᑦᓂᑦᓂᑦᓂᑦᓂᑦ ᐱᑦᓂᑦᓂᑦᓂᑦᓂᑦ ᐱᑦᓂᑦᓂᑦᓂᑦᓂᑦᓂᑦ ᐱᑦᓂᑦᓂᑦᓂᑦᓂᑦ
DISTRIBUTION OF OPERATIONS AND MAINTENANCE BUDGET

	ᐃᑦᓂᑦᓂᑦᓂᑦᓂᑦ Headquarters (\$000)	ᐱᑦᓂᑦᓂᑦᓂᑦᓂᑦ Qikiqtaaluk (\$000)	ᐱᑦᓂᑦᓂᑦᓂᑦ Kivalliq (\$000)	ᐱᑦᓂᑦᓂᑦᓂᑦ Kitikmeot (\$000)	ᐱᑦᓂᑦᓂᑦᓂᑦ Total (\$000)
ᐃᑦᓂᑦᓂᑦᓂᑦᓂᑦᓂᑦ ᐱᑦᓂᑦᓂᑦᓂᑦᓂᑦ ᐱᑦᓂᑦᓂᑦᓂᑦᓂᑦ Compensation and Benefits	8,451	36,557	19,494	12,826	77,328
ᐱᑦᓂᑦᓂᑦᓂᑦᓂᑦᓂᑦ ᐱᑦᓂᑦᓂᑦᓂᑦᓂᑦ Grants and Contributions	23,173	6,509	5,257	1,869	36,808
ᓂᑦᓂᑦᓂᑦᓂᑦᓂᑦᓂᑦ ᐱᑦᓂᑦᓂᑦᓂᑦᓂᑦ ᐱᑦᓂᑦᓂᑦᓂᑦᓂᑦ Travel and Transportation	1,679	1,354	901	933	4,867
ᐱᑦᓂᑦᓂᑦᓂᑦᓂᑦᓂᑦᓂᑦ ᐱᑦᓂᑦᓂᑦᓂᑦᓂᑦ Materials and Supplies	889	162	112	50	1,213
ᓂᑦᓂᑦᓂᑦᓂᑦᓂᑦᓂᑦ ᐱᑦᓂᑦᓂᑦᓂᑦᓂᑦᓂᑦ Purchased Services	377	839	426	66	1,708
ᐱᑦᓂᑦᓂᑦᓂᑦᓂᑦᓂᑦ Utilities	-	4,030	2,299	1,829	8,158
ᓂᑦᓂᑦᓂᑦᓂᑦᓂᑦᓂᑦ ᐱᑦᓂᑦᓂᑦᓂᑦᓂᑦᓂᑦ Contract Services	1,057	2,426	960	1,136	5,579
ᐱᑦᓂᑦᓂᑦᓂᑦᓂᑦᓂᑦ ᐱᑦᓂᑦᓂᑦᓂᑦᓂᑦᓂᑦ Fees and Payments	1,021	13,070	5,396	4,237	23,724
ᐱᑦᓂᑦᓂᑦᓂᑦᓂᑦᓂᑦ ᐱᑦᓂᑦᓂᑦᓂᑦᓂᑦ Other Expenses	456	65	39	25	585
ᐱᑦᓂᑦᓂᑦᓂᑦᓂᑦᓂᑦ ᐱᑦᓂᑦᓂᑦᓂᑦᓂᑦ ᐱᑦᓂᑦᓂᑦᓂᑦᓂᑦᓂᑦ Total Operations & Maintenance	37,103	65,012	34,884	22,971	159,970



