

ᐆᐳᐣᐠᐠᐳᐣ



FINANCE

ᐱᑦᐅᑦᑕᑦᑎᑦ ᐃᑦ  
ᑎᑦᑎᑦ

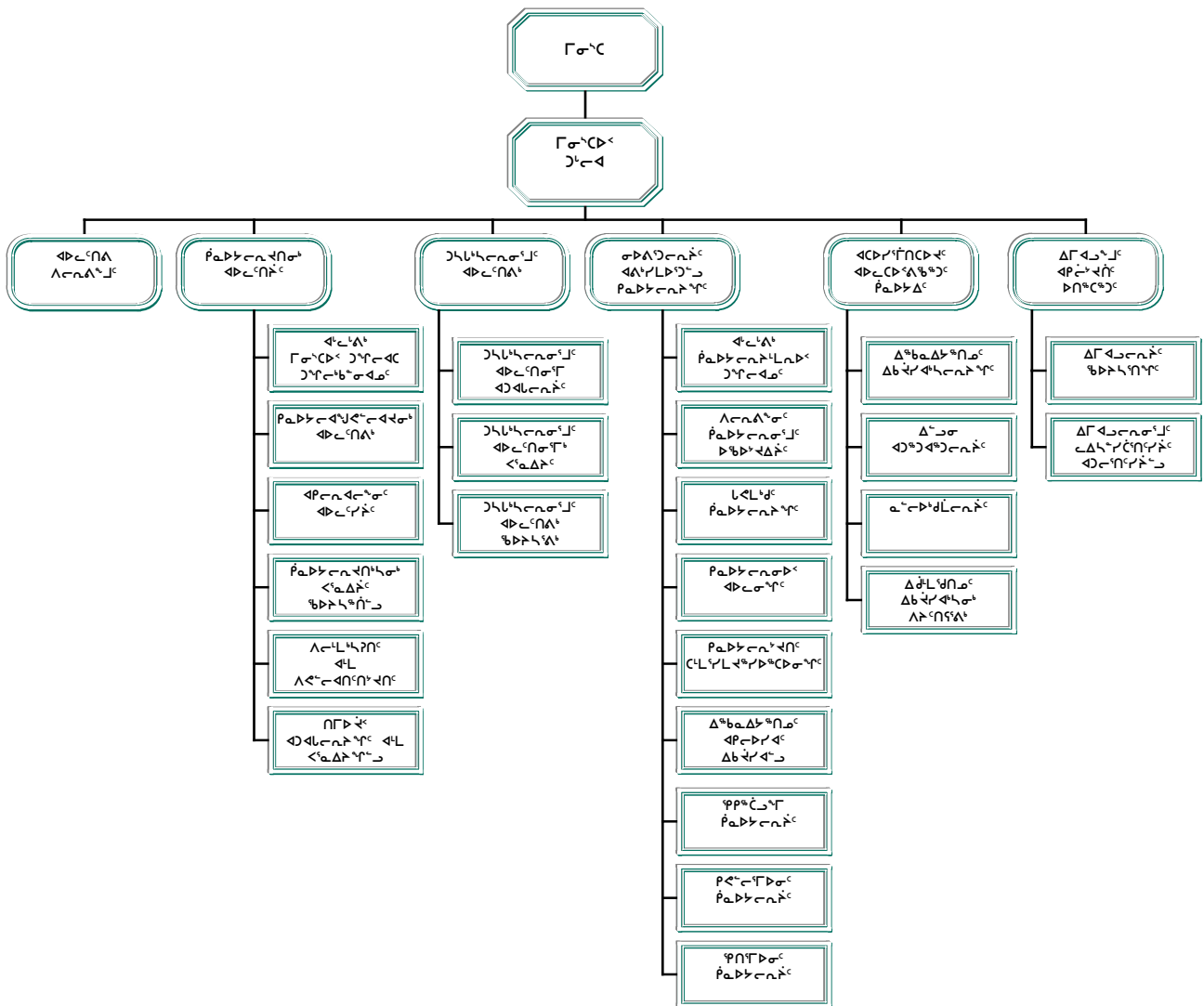
ᑦᑎᑦ ᑦᑎᑦ  
ᑎᑦᑎᑦᑎᑦᑎᑦ ᑎᑦᑎᑦ

ᐱᑦᑎᑦ ᑎᑎᑦ  
ᑎᑦᑎᑦᑎᑦᑎᑦ ᑎᑦᑎᑦᑎᑦᑎᑦ

ᑎᑦᑎᑦ ᑎᑎᑦ  
ᑎᑦᑎᑦᑎᑦᑎᑦᑎᑦ ᑎᑦᑎᑦᑎᑦᑎᑦ

ᑦᑎᑦ ᑎᑎᑦᑎᑦ  
ᐱᑦᐅᑦᐅᑦᑕᑦᑎᑦᑎᑦ ᑎᑎᑦᑎᑦᑎᑦ

ᐱᑦᐅᑦᐅᑦᑕᑦᑎᑦᑎᑦ ᑎᑎᑦᑎᑦᑎᑦᑎᑦ



**Kelvin Ng**  
 Minister

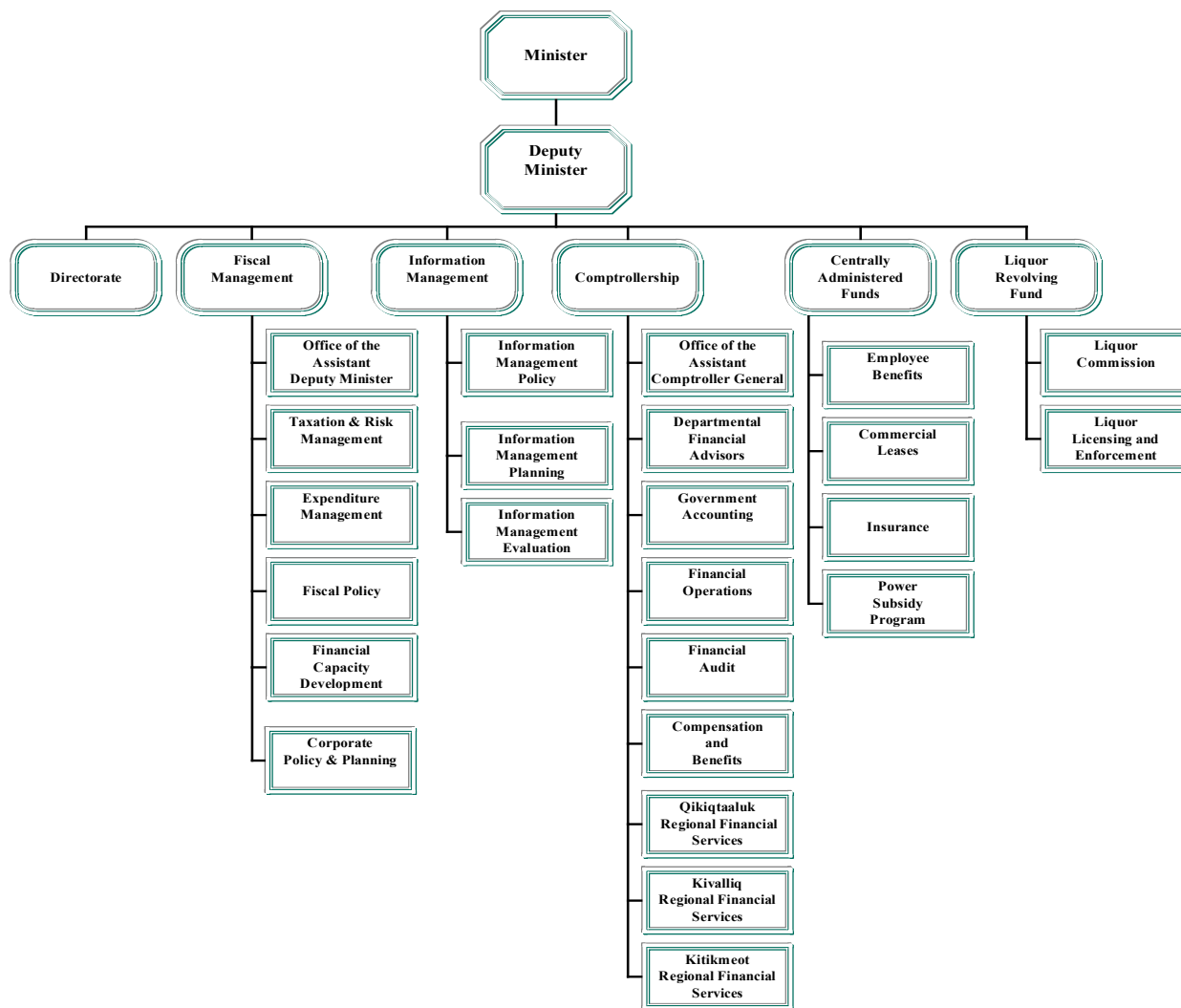
**Robert Vardy**  
 Deputy Minister

**Victor Tootoo**  
 Assistant Deputy Minister

**Glen Sargant**  
 Chief Information Officer

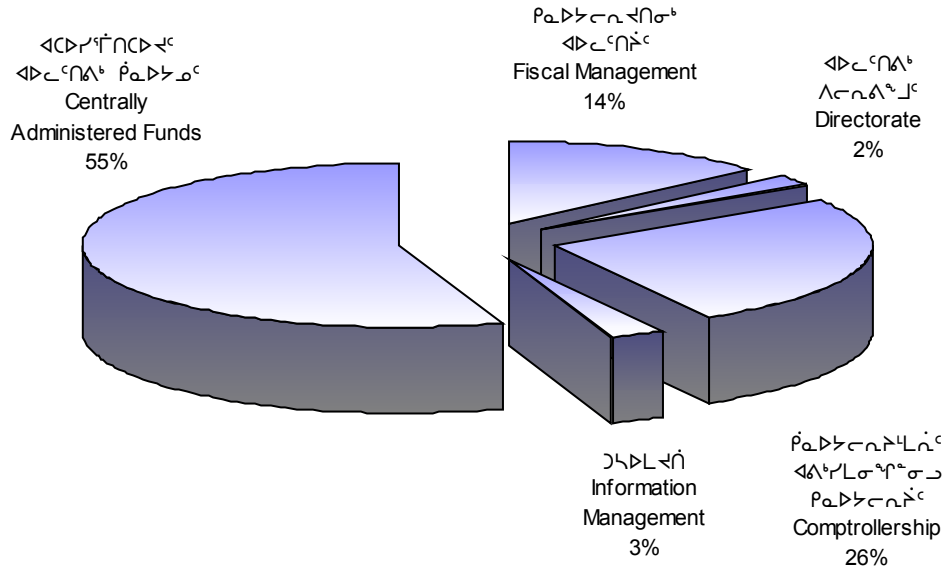
**Rod Malcolm**  
 Assistant Comptroller General

# ACCOUNTING STRUCTURE CHART





ᐱᓕᓕᓐᓂᓐ ᓂᓂᓂᓐ ᐱᓕᓕᓐᓂᓐ  
DETAIL OF EXPENDITURES



ᐱᓕᓕᓐᓂᓐ ᓂᓂᓂᓐ	DESCRIPTION	ᐱᓕᓕᓐᓂᓐ ᐱᓕᓕᓐᓂᓐ	ᐱᓕᓕᓐᓂᓐ ᐱᓕᓕᓐᓂᓐ	ᐱᓕᓕᓐᓂᓐ ᐱᓕᓕᓐᓂᓐ
		2003-2004 Main Estimates (\$000)	2002-2003 Revised Estimates (\$000)	2002-2003 Main Estimates (\$000)
ᐱᓕᓕᓐᓂᓐ ᐱᓕᓕᓐᓂᓐ ᐱᓕᓕᓐᓂᓐ	Compensation and Benefits	18,861	17,313	17,313
ᐱᓕᓕᓐᓂᓐ ᐱᓕᓕᓐᓂᓐ ᐱᓕᓕᓐᓂᓐ	Grants and Contributions	4,750	4,750	4,750
ᐱᓕᓕᓐᓂᓐ ᐱᓕᓕᓐᓂᓐ ᐱᓕᓕᓐᓂᓐ	Travel and Transportation	905	881	881
ᐱᓕᓕᓐᓂᓐ ᐱᓕᓕᓐᓂᓐ ᐱᓕᓕᓐᓂᓐ	Materials and Supplies	410	416	416
ᐱᓕᓕᓐᓂᓐ ᐱᓕᓕᓐᓂᓐ ᐱᓕᓕᓐᓂᓐ	Purchased Services	250	229	229
ᐱᓕᓕᓐᓂᓐ ᐱᓕᓕᓐᓂᓐ ᐱᓕᓕᓐᓂᓐ	Utilities	-	-	-
ᐱᓕᓕᓐᓂᓐ ᐱᓕᓕᓐᓂᓐ ᐱᓕᓕᓐᓂᓐ	Contract Services	10,643	14,114	13,524
ᐱᓕᓕᓐᓂᓐ ᐱᓕᓕᓐᓂᓐ ᐱᓕᓕᓐᓂᓐ	Fees and Payments	8,141	10,886	9,311
ᐱᓕᓕᓐᓂᓐ ᐱᓕᓕᓐᓂᓐ ᐱᓕᓕᓐᓂᓐ	Other Expenses	545	956	956
<b>ᐱᓕᓕᓐᓂᓐ ᐱᓕᓕᓐᓂᓐ ᐱᓕᓕᓐᓂᓐ</b>	<b>Total Operations &amp; Maintenance</b>	<b>44,505</b>	<b>49,545</b>	<b>47,380</b>
ᐱᓕᓕᓐᓂᓐ ᐱᓕᓕᓐᓂᓐ ᐱᓕᓕᓐᓂᓐ	Total Capital	-	390	-
<b>ᐱᓕᓕᓐᓂᓐ ᐱᓕᓕᓐᓂᓐ ᐱᓕᓕᓐᓂᓐ</b>	<b>Total Expenditures</b>	<b>44,505</b>	<b>49,935</b>	<b>47,380</b>

## ᐸᐸᓕᓂᕐᕗᕐ ᐱᓕᓂᕐᕗᕐᕈᕐ

ᐸᐸᓕᓂᕐᕗᕐ ᐱᓕᓂᕐᕗᕐᕈᕐ ᐸᕐᕐᕗᕐᕗᕐᕆᕐᕗᕐᕈᕐ ᐸᕐᕗᕐᕗᕐᕈᕐ ᐱᓕᓂᕐᕗᕐᕈᕐ ᐸᕐᕈᕐ  
 ᕐᕗᕐᕗᕐᕈᕐᕈᕐ ᐱᓕᓂᕐᕗᕐᕈᕐ ᐸᕐᕗᕐᕗᕐᕈᕐ ᐸᕐᕗᕐᕗᕐᕈᕐ ᐸᕐᕗᕐᕗᕐᕈᕐ ᐸᕐᕗᕐᕗᕐᕈᕐ  
 ᐸᕐᕗᕐᕗᕐᕈᕐᕈᕐ ᐸᕐᕗᕐᕗᕐᕈᕐᕈᕐ ᐸᕐᕗᕐᕗᕐᕈᕐᕈᕐ ᐸᕐᕗᕐᕗᕐᕈᕐᕈᕐ ᐸᕐᕗᕐᕗᕐᕈᕐᕈᕐ  
 ᐸᕐᕗᕐᕗᕐᕈᕐᕈᕐ ᐸᕐᕗᕐᕗᕐᕈᕐᕈᕐ ᐸᕐᕗᕐᕗᕐᕈᕐᕈᕐ ᐸᕐᕗᕐᕗᕐᕈᕐᕈᕐ ᐸᕐᕗᕐᕗᕐᕈᕐᕈᕐ

## DIRECTORATE

The Directorate is responsible for the senior management of the department and ensures that Finance fulfills its mandate according to specified goals, objectives and priorities. The Deputy Minister also serves as the Secretary of the Financial Management Board and as the Comptroller General for the Government of Nunavut. The Directorate, through the Registrar, provides the Financial Management Board with administrative support. It is responsible for the management of the departmental budget and administrative services.

	ᐱᓕᓂᕐᕗᕐᕈᕐ ᐸᕐᕗᕐᕗᕐᕈᕐ	ᐸᕐᕗᕐᕗᕐᕈᕐᕈᕐ ᐸᕐᕗᕐᕗᕐᕈᕐ	ᐱᓕᓂᕐᕗᕐᕈᕐ ᐸᕐᕗᕐᕗᕐᕈᕐ	ᐱᓕᓂᕐᕗᕐᕈᕐ ᐸᕐᕗᕐᕗᕐᕈᕐ
	<b>2003-2004</b>	2002-2003	2002-2003	
	<b>Main</b>	Revised	Main	
	<b>Estimates</b>	Estimates	Estimates	
	(\$000)	(\$000)	(\$000)	
<b>ᐱᓕᓂᕐᕗᕐᕈᕐ</b>	<b>DESCRIPTION</b>			
ᐸᕐᕗᕐᕗᕐᕈᕐᕈᕐ ᐸᕐᕗᕐᕗᕐᕈᕐᕈᕐ	Compensation and Benefits	538	938	938
ᕈᕐᕗᕐᕗᕐᕈᕐ ᐸᕐᕗᕐᕗᕐᕈᕐ	Grants and Contributions	-	-	-
ᕈᕐᕗᕐᕗᕐᕈᕐᕈᕐ ᐸᕐᕗᕐᕗᕐᕈᕐ	Travel and Transportation	60	100	100
ᐸᕐᕗᕐᕗᕐᕈᕐᕈᕐ ᐸᕐᕗᕐᕗᕐᕈᕐ	Materials and Supplies	25	25	25
ᕈᕐᕗᕐᕗᕐᕈᕐᕈᕐ ᐸᕐᕗᕐᕗᕐᕈᕐ	Purchased Services	15	24	24
ᕈᕐᕗᕐᕗᕐᕈᕐᕈᕐ	Utilities	-	-	-
ᕈᕐᕗᕐᕗᕐᕈᕐᕈᕐ ᐸᕐᕗᕐᕗᕐᕈᕐ	Contract Services	270	50	50
ᐸᕐᕗᕐᕗᕐᕈᕐᕈᕐ ᐸᕐᕗᕐᕗᕐᕈᕐ	Fees and Payments	15	50	50
ᐸᕐᕗᕐᕗᕐᕈᕐᕈᕐ ᐸᕐᕗᕐᕗᕐᕈᕐ	Other Expenses	30	35	35
<b>ᕈᕐᕗᕐᕗᕐᕈᕐᕈᕐ ᐸᕐᕗᕐᕗᕐᕈᕐᕈᕐ</b>	<b>Total Operations &amp; Maintenance</b>	<b>953</b>	<b>1,222</b>	<b>1,222</b>
<b>ᕈᕐᕗᕐᕗᕐᕈᕐᕈᕐ ᐸᕐᕗᕐᕗᕐᕈᕐ</b>	<b>Total Capital</b>	<b>-</b>	<b>-</b>	<b>-</b>
<b>ᕈᕐᕗᕐᕗᕐᕈᕐᕈᕐ ᐸᕐᕗᕐᕗᕐᕈᕐᕈᕐ</b>	<b>Total Expenditures</b>	<b>953</b>	<b>1,222</b>	<b>1,222</b>











ᐱᓂᓂᓐᓂᓐ ᐱᓂᓂᓐ ᐱᓂᓂᓐ  
CENTRALLY ADMINISTERED FUNDS

	ᐱᓂᓂᓐ ᐱᓂᓂᓐ 2003-2004 Main Estimates (\$000)	ᐱᓂᓂᓐᓂᓐ ᐱᓂᓂᓐ 2002-2003 Revised Estimates (\$000)	ᐱᓂᓂᓐ ᐱᓂᓂᓐ 2002-2003 Main Estimates (\$000)
<b>ᐱᓂᓂᓐᓂᓐ ᐱᓂᓂᓐ</b>			
<b>Grants and Contributions</b>			
<b>ᐱᓂᓂᓐᓂᓐ Contributions</b>			
ᐱᓂᓂᓐᓂᓐ ᐱᓂᓂᓐ ᐱᓂᓂᓐᓂᓐ ᐱᓂᓂᓐᓂᓐ ᐱᓂᓂᓐᓂᓐ ᐱᓂᓂᓐᓂᓐ	4,750	4,750	4,750
<b>Power Subsidy</b> Domestic and commercial power subsidies to consumers of electricity.			
<b>ᐱᓂᓂᓐᓂᓐ ᐱᓂᓂᓐ Total Contributions</b>	<b>4,750</b>	<b>4,750</b>	<b>4,750</b>
<b>ᐱᓂᓂᓐᓂᓐ ᐱᓂᓂᓐᓂᓐ ᐱᓂᓂᓐᓂᓐ Total Grants and Contributions</b>	<b>4,750</b>	<b>4,750</b>	<b>4,750</b>





