

ᐱᓕᓂᐱᓐᓂᓐ  
ᐱᓐᓂᐱᓐᓂᓐᓂᓐᓂᓐᓂᓐᓂᓐ  
ᐱᓐᓂᓐᓂᓐᓂᓐ



HEALTH AND  
SOCIAL SERVICES



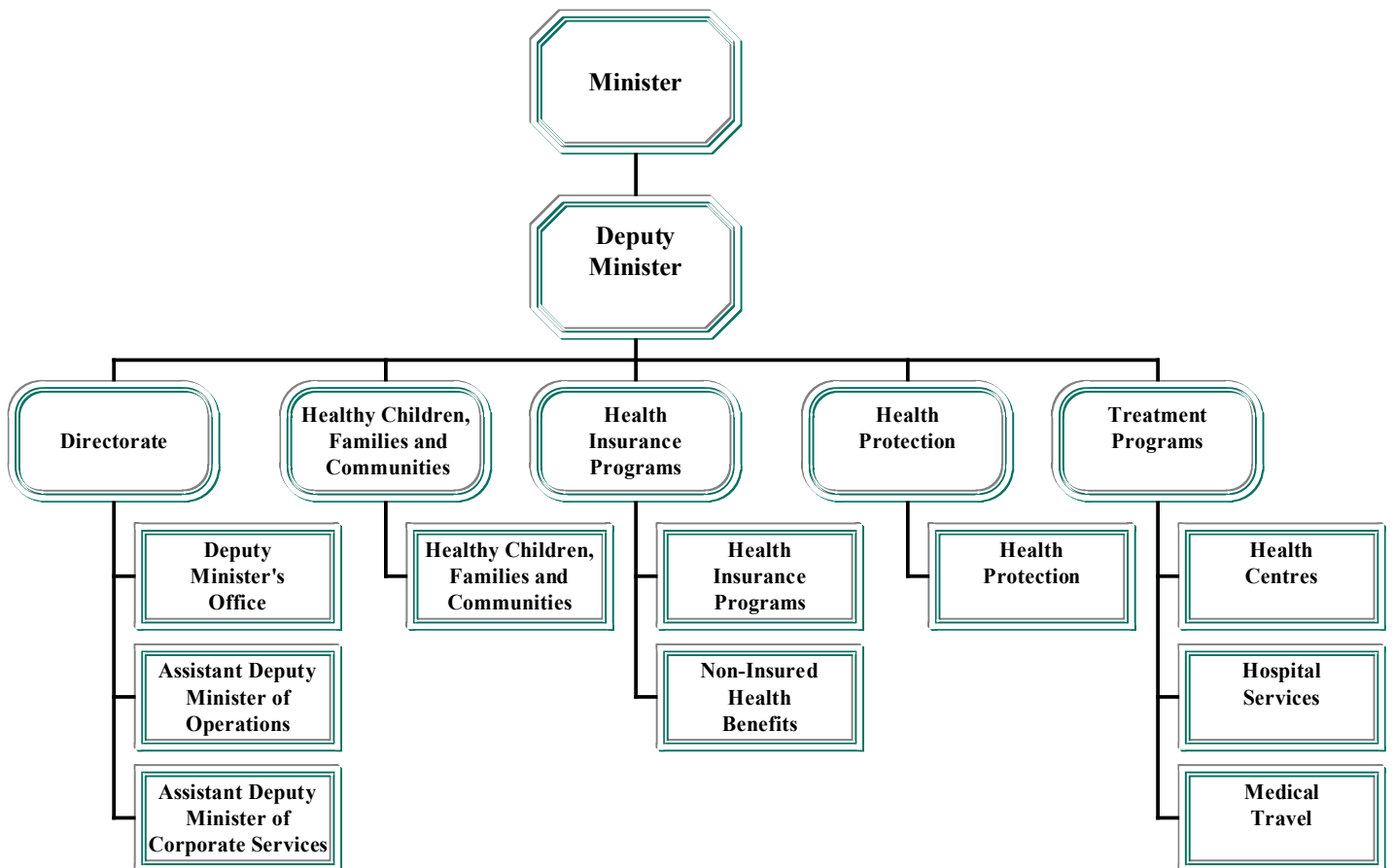
**Edward Picco**  
 Minister

**Wayne Govereau**  
 Assistant Deputy Minister  
 Operations

**Keith Best**  
 Deputy Minister

**Abraham Tagalik**  
 Assistant Deputy Minister  
 Corporate Services and Strategic Initiatives

## ACCOUNTING STRUCTURE CHART



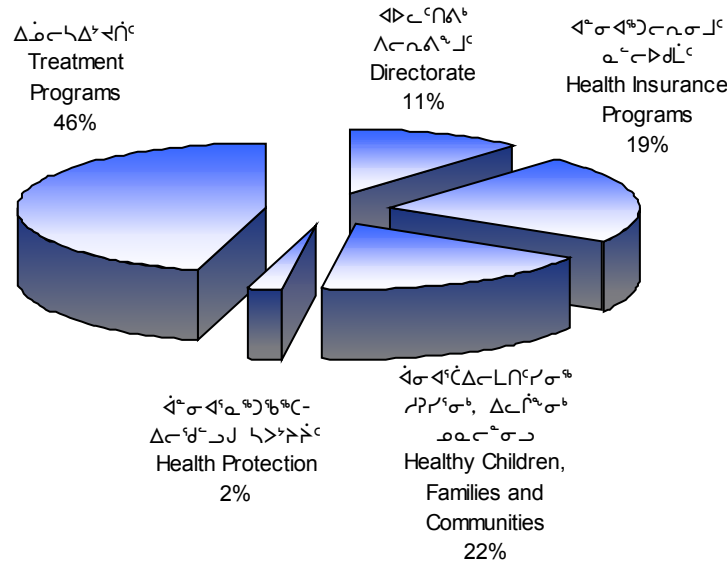
ᐱᓂᐅᐱᓕᐳᐱᑦ

ᐅᓂᐳᐱᓕᐳᐱᑦᐳᑦ ᐸᐅᐅᐱᓂᐅᐱᓂᐳᐱᑦᐳᑦ, ᐱᓂᐳᐱᓂᐳᐱᑦ ᐳᐱᓂ ᐳᐱᓂᐳᐱᓂᐳᐱᑦᐳᑦ ᐳᐱᓂ ᐅᓂᐳᐱᓂᐳᐱᑦᐳᑦ ᐳᐱᓂ ᐅᓂᐳᐱᓂᐳᐱᑦᐳᑦ ᐳᐱᓂ ᐳᐱᓂᐳᐱᓂᐳᐱᑦᐳᑦ ᐳᐱᓂ ᐳᐱᓂᐳᐱᓂᐳᐱᑦᐳᑦ ᐳᐱᓂ ᐳᐱᓂᐳᐱᓂᐳᐱᑦᐳᑦ ᐳᐱᓂ ᐳᐱᓂᐳᐱᓂᐳᐱᑦᐳᑦ ᐳᐱᓂ ᐳᐱᓂᐳᐱᓂᐳᐱᑦᐳᑦ ᐳᐱᓂ ᐳᐱᓂᐳᐱᓂᐳᐱᑦᐳᑦ.

MISSION

Our mission is to promote, protect and enhance the health and well-being of all Nunavummiut incorporating Inuit Qaujimagatjuqangit at all levels of service delivery and design.

ᐱᑦᑕᑦᑎᐱᑦᑎᐱᑦ ᐱᑦᑕᑦᑎᐱᑦᑎᐱᑦ  
DETAIL OF EXPENDITURES



ᐱᑦᑕᑦᑎᐱᑦᑎᐱᑦ	DESCRIPTION	ᐱᑦᑕᑦᑎᐱᑦᑎᐱᑦ	ᐱᑦᑕᑦᑎᐱᑦᑎᐱᑦ	ᐱᑦᑕᑦᑎᐱᑦᑎᐱᑦ
		2003-2004 Main Estimates (\$000)	2002-2003 Revised Estimates (\$000)	2002-2003 Main Estimates (\$000)
ᐱᑦᑕᑦᑎᐱᑦᑎᐱᑦ ᐱᑦᑕᑦᑎᐱᑦᑎᐱᑦ ᐱᑦᑕᑦᑎᐱᑦᑎᐱᑦ	Compensation and Benefits	52,567	50,424	50,424
ᐱᑦᑕᑦᑎᐱᑦᑎᐱᑦ ᐱᑦᑕᑦᑎᐱᑦᑎᐱᑦ ᐱᑦᑕᑦᑎᐱᑦᑎᐱᑦ	Grants and Contributions	4,931	4,048	4,048
ᐱᑦᑕᑦᑎᐱᑦᑎᐱᑦ ᐱᑦᑕᑦᑎᐱᑦᑎᐱᑦ ᐱᑦᑕᑦᑎᐱᑦᑎᐱᑦ	Travel and Transportation	28,200	33,421	33,421
ᐱᑦᑕᑦᑎᐱᑦᑎᐱᑦ ᐱᑦᑕᑦᑎᐱᑦᑎᐱᑦ ᐱᑦᑕᑦᑎᐱᑦᑎᐱᑦ	Materials and Supplies	6,029	5,021	5,021
ᐱᑦᑕᑦᑎᐱᑦᑎᐱᑦ ᐱᑦᑕᑦᑎᐱᑦᑎᐱᑦ ᐱᑦᑕᑦᑎᐱᑦᑎᐱᑦ	Purchased Services	2,297	1,917	1,917
ᐱᑦᑕᑦᑎᐱᑦᑎᐱᑦ ᐱᑦᑕᑦᑎᐱᑦᑎᐱᑦ ᐱᑦᑕᑦᑎᐱᑦᑎᐱᑦ	Utilities	78	142	142
ᐱᑦᑕᑦᑎᐱᑦᑎᐱᑦ ᐱᑦᑕᑦᑎᐱᑦᑎᐱᑦ ᐱᑦᑕᑦᑎᐱᑦᑎᐱᑦ	Contract Services	56,165	54,525	53,075
ᐱᑦᑕᑦᑎᐱᑦᑎᐱᑦ ᐱᑦᑕᑦᑎᐱᑦᑎᐱᑦ ᐱᑦᑕᑦᑎᐱᑦᑎᐱᑦ	Fees and Payments	708	787	787
ᐱᑦᑕᑦᑎᐱᑦᑎᐱᑦ ᐱᑦᑕᑦᑎᐱᑦᑎᐱᑦ ᐱᑦᑕᑦᑎᐱᑦᑎᐱᑦ	Other Expenses	618	698	2,198
ᐱᑦᑕᑦᑎᐱᑦᑎᐱᑦ ᐱᑦᑕᑦᑎᐱᑦᑎᐱᑦ ᐱᑦᑕᑦᑎᐱᑦᑎᐱᑦ	<b>Total Operations &amp; Maintenance</b>	<b>151,593</b>	<b>150,983</b>	<b>151,033</b>
ᐱᑦᑕᑦᑎᐱᑦᑎᐱᑦ ᐱᑦᑕᑦᑎᐱᑦᑎᐱᑦ ᐱᑦᑕᑦᑎᐱᑦᑎᐱᑦ	<b>Total Capital</b>	<b>55,790</b>	<b>15,150</b>	<b>5,860</b>
ᐱᑦᑕᑦᑎᐱᑦᑎᐱᑦ ᐱᑦᑕᑦᑎᐱᑦᑎᐱᑦ ᐱᑦᑕᑦᑎᐱᑦᑎᐱᑦ	<b>Total Expenditures</b>	<b>207,383</b>	<b>166,133</b>	<b>156,893</b>



ᐱᓕᓂᐱᓪᐳᑦ ᐱᓕᓂᐱᓪᐳᑦ  
DIRECTORATE

	ᐱᓕᓂᐱᓪᐳᑦ ᐱᓕᓂᐱᓪᐳᑦ 2003-2004 Main Estimates (\$000)	ᐱᓕᓂᐱᓪᐳᑦ ᐱᓕᓂᐱᓪᐳᑦ 2002-2003 Revised Estimates (\$000)	ᐱᓕᓂᐱᓪᐳᑦ ᐱᓕᓂᐱᓪᐳᑦ 2002-2003 Main Estimates (\$000)
<b>ᐱᓕᓂᐱᓪᐳᑦ ᐱᓕᓂᐱᓪᐳᑦ</b> <b>Grants and Contributions</b>			
<b>ᐱᓕᓂᐱᓪᐳᑦ Contributions</b>			
<b>ᓄᓇᓂᐱᓪᐳᑦ ᐱᓕᓂᐱᓪᐳᑦ ᐱᓕᓂᐱᓪᐳᑦ</b> ᐱᓕᓂᐱᓪᐳᑦ ᐱᓕᓂᐱᓪᐳᑦ ᐱᓕᓂᐱᓪᐳᑦ ᐱᓕᓂᐱᓪᐳᑦ ᐱᓕᓂᐱᓪᐳᑦ ᐱᓕᓂᐱᓪᐳᑦ ᐱᓕᓂᐱᓪᐳᑦ ᐱᓕᓂᐱᓪᐳᑦ	600	600	600
<b>Nunavut Nursing Program</b> Funding for Nunavut Arctic College for the provision of the Nunavut Nursing Program.			
<b>ᓄᓇᓂᐱᓪᐳᑦ ᐱᓕᓂᐱᓪᐳᑦ ᐱᓕᓂᐱᓪᐳᑦ</b> ᐱᓕᓂᐱᓪᐳᑦ	166	166	166
<b>Nunavut Arctic College Program</b> To deliver a program which trains individuals from the communities to work in the health and social services field. This training will enable these individuals to provide services such as teaching communities to improve lifestyle habits in diet, etc.			
<b>ᓄᓇᓂᐱᓪᐳᑦ ᐱᓕᓂᐱᓪᐳᑦ</b> ᐱᓕᓂᐱᓪᐳᑦ ᐱᓕᓂᐱᓪᐳᑦ ᐱᓕᓂᐱᓪᐳᑦ ᐱᓕᓂᐱᓪᐳᑦ ᐱᓕᓂᐱᓪᐳᑦ ᐱᓕᓂᐱᓪᐳᑦ ᐱᓕᓂᐱᓪᐳᑦ ᐱᓕᓂᐱᓪᐳᑦ ᐱᓕᓂᐱᓪᐳᑦ ᐱᓕᓂᐱᓪᐳᑦ ᐱᓕᓂᐱᓪᐳᑦ ᐱᓕᓂᐱᓪᐳᑦ ᐱᓕᓂᐱᓪᐳᑦ ᐱᓕᓂᐱᓪᐳᑦ ᐱᓕᓂᐱᓪᐳᑦ ᐱᓕᓂᐱᓪᐳᑦ	200	200	200
<b>Community of Councils</b> A contribution of \$5,000 per community for support of the operation of hamlet committees on health and social services, as the means of ensuring that community concerns and issues are communicated effectively to the department.			

ᐱᓕᓂᐱᓪᓴᑦ ᐱᓕᓂᐱᓪᓴᑦ  
 DIRECTORATE

	ᐱᓕᓂᐱᓪᓴᑦ ᐱᓕᓂᐱᓪᓴᑦ	ᐱᓕᓂᐱᓪᓴᑦ ᐱᓕᓂᐱᓪᓴᑦ	ᐱᓕᓂᐱᓪᓴᑦ ᐱᓕᓂᐱᓪᓴᑦ
	2003-2004 Main Estimates (\$000)	2002-2003 Revised Estimates (\$000)	2002-2003 Main Estimates (\$000)
<b>ᐱᓕᓂᐱᓪᓴᑦ ᐱᓕᓂᐱᓪᓴᑦ</b> <b>Grants and Contributions</b>			
<b>ᐱᓕᓂᐱᓪᓴᑦ Contributions</b>			
ᐱᓕᓂᐱᓪᓴᑦ ᐱᓕᓂᐱᓪᓴᑦ ᐱᓕᓂᐱᓪᓴᑦ ᐱᓕᓂᐱᓪᓴᑦ ᐱᓕᓂᐱᓪᓴᑦ ᐱᓕᓂᐱᓪᓴᑦ ᐱᓕᓂᐱᓪᓴᑦ ᐱᓕᓂᐱᓪᓴᑦ ᐱᓕᓂᐱᓪᓴᑦ	20	-	-
<b>Nursing Scholarships</b> To establish the Queen Elizabeth II Scholarships in nursing			
<b>ᐱᓕᓂᐱᓪᓴᑦ ᐱᓕᓂᐱᓪᓴᑦ Total Contributions</b>	<b>986</b>	<b>966</b>	<b>966</b>
<b>ᐱᓕᓂᐱᓪᓴᑦ ᐱᓕᓂᐱᓪᓴᑦ ᐱᓕᓂᐱᓪᓴᑦ Total Grants and Contributions</b>	<b>986</b>	<b>966</b>	<b>966</b>





ᓴᓂᓂᐱᓂᓪ ᓴᓂᓂᐱᓂᓪ ᓴᓂᓂᐱᓂᓪ ᓴᓂᓂᐱᓂᓪ ᓴᓂᓂᐱᓂᓪ  
HEALTHY CHILDREN, FAMILIES AND COMMUNITIES

	ᓴᓂᓂᐱᓂᓪ ᓴᓂᓂᐱᓂᓪ	ᓴᓂᓂᐱᓂᓪ ᓴᓂᓂᐱᓂᓪ ᓴᓂᓂᐱᓂᓪ ᓴᓂᓂᐱᓂᓪ	ᓴᓂᓂᐱᓂᓪ ᓴᓂᓂᐱᓂᓪ
	2003-2004 Main Estimates (\$000)	2002-2003 Revised Estimates (\$000)	2002-2003 Main Estimates (\$000)
<b>ᓴᓂᓂᐱᓂᓪ ᓴᓂᓂᐱᓂᓪ Grants and Contributions</b>			
<b>ᓴᓂᓂᐱᓂᓪ Contributions</b>			
ᓴᓂᓂᐱᓂᓪ ᓴᓂᓂᐱᓂᓪ ᓴᓂᓂᐱᓂᓪ ᓴᓂᓂᐱᓂᓪ ᓴᓂᓂᐱᓂᓪ ᓴᓂᓂᐱᓂᓪ ᓴᓂᓂᐱᓂᓪ ᓴᓂᓂᐱᓂᓪ ᓴᓂᓂᐱᓂᓪ ᓴᓂᓂᐱᓂᓪ ᓴᓂᓂᐱᓂᓪ ᓴᓂᓂᐱᓂᓪ ᓴᓂᓂᐱᓂᓪ ᓴᓂᓂᐱᓂᓪ ᓴᓂᓂᐱᓂᓪ ᓴᓂᓂᐱᓂᓪ	2,996	2,036	2,036
<b>Shelter Programs</b> Funding to organizations to provide a shelter facility to accommodate various individuals with special needs such as women's shelter, elders' facilities and Iqaluit Psychiatric Facility.			
ᓴᓂᓂᐱᓂᓪ ᓴᓂᓂᐱᓂᓪ ᓴᓂᓂᐱᓂᓪ ᓴᓂᓂᐱᓂᓪ ᓴᓂᓂᐱᓂᓪ ᓴᓂᓂᐱᓂᓪ ᓴᓂᓂᐱᓂᓪ ᓴᓂᓂᐱᓂᓪ ᓴᓂᓂᐱᓂᓪ ᓴᓂᓂᐱᓂᓪ ᓴᓂᓂᐱᓂᓪ ᓴᓂᓂᐱᓂᓪ	949	949	949
<b>Alcohol and Drug Programs</b> Funding to Nunavut municipalities to provide Alcohol and Drug Treatment Programs.			
ᓴᓂᓂᐱᓂᓪ ᓴᓂᓂᐱᓂᓪ ᓴᓂᓂᐱᓂᓪ ᓴᓂᓂᐱᓂᓪ ᓴᓂᓂᐱᓂᓪ ᓴᓂᓂᐱᓂᓪ ᓴᓂᓂᐱᓂᓪ ᓴᓂᓂᐱᓂᓪ ᓴᓂᓂᐱᓂᓪ ᓴᓂᓂᐱᓂᓪ ᓴᓂᓂᐱᓂᓪ ᓴᓂᓂᐱᓂᓪ	-	97	97
<b>Suicide Prevention</b> Funding support for the planning and development of a national conference on suicide prevention and intervention.			
<b>ᓴᓂᓂᐱᓂᓪ ᓴᓂᓂᐱᓂᓪ Total Contributions</b>	<b>3,945</b>	<b>3,082</b>	<b>3,082</b>
<b>ᓴᓂᓂᐱᓂᓪ ᓴᓂᓂᐱᓂᓪ Total Grants and Contributions</b>	<b>3,945</b>	<b>3,082</b>	<b>3,082</b>









ᐱᓐᓂᐱᓐᓂᓐ ᐱᓐᓂᐱᓐᓂᓐ ᐱᓐᓂᐱᓐᓂᓐ ᐱᓐᓂᐱᓐᓂᓐ  
DISTRIBUTION OF OPERATIONS AND MAINTENANCE BUDGET

	ᐱᓐᓂᐱᓐᓂᓐ Headquarters (\$000)	ᐱᓐᓂᐱᓐᓂᓐ Qikiqtaaluk (\$000)	ᐱᓐᓂᐱᓐᓂᓐ Kivalliq (\$000)	ᐱᓐᓂᐱᓐᓂᓐ Kitikmeot (\$000)	ᐱᓐᓂᐱᓐᓂᓐ Total (\$000)
ᐱᓐᓂᐱᓐᓂᓐ ᐱᓐᓂᐱᓐᓂᓐ ᐱᓐᓂᐱᓐᓂᓐ Compensation and Benefits	8,565	24,329	12,204	7,469	52,567
ᐱᓐᓂᐱᓐᓂᓐ ᐱᓐᓂᐱᓐᓂᓐ Grants and Contributions	986	2,566	799	580	4,931
ᐱᓐᓂᐱᓐᓂᓐ ᐱᓐᓂᐱᓐᓂᓐ Travel and Transportation	1,069	10,869	10,316	5,946	28,200
ᐱᓐᓂᐱᓐᓂᓐ ᐱᓐᓂᐱᓐᓂᓐ Materials and Supplies	985	2,700	1,399	945	6,029
ᐱᓐᓂᐱᓐᓂᓐ ᐱᓐᓂᐱᓐᓂᓐ Purchased Services	731	980	278	308	2,297
ᐱᓐᓂᐱᓐᓂᓐ Utilities	25	30	23	-	78
ᐱᓐᓂᐱᓐᓂᓐ ᐱᓐᓂᐱᓐᓂᓐ Contract Services	33,098	11,107	8,799	3,161	56,165
ᐱᓐᓂᐱᓐᓂᓐ ᐱᓐᓂᐱᓐᓂᓐ Fees and Payments	121	451	74	62	708
ᐱᓐᓂᐱᓐᓂᓐ ᐱᓐᓂᐱᓐᓂᓐ Other Expenses	551	62	-	5	618
<b>ᐱᓐᓂᐱᓐᓂᓐ ᐱᓐᓂᐱᓐᓂᓐ ᐱᓐᓂᐱᓐᓂᓐ</b> <b>Total Operations &amp; Maintenance</b>	<b>46,131</b>	<b>53,094</b>	<b>33,892</b>	<b>18,476</b>	<b>151,593</b>

