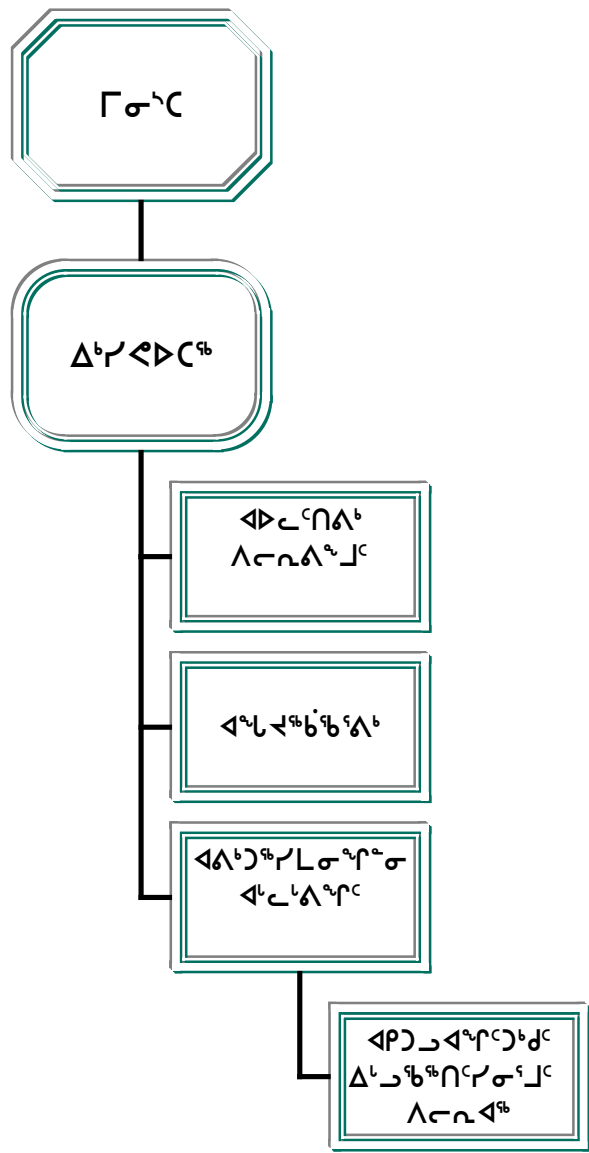




ᑎᓄᓐᓂᓐ ᑕᓄᓐ ᑕᓄᓐ ᑕᓄᓐ ᑕᓄᓐ

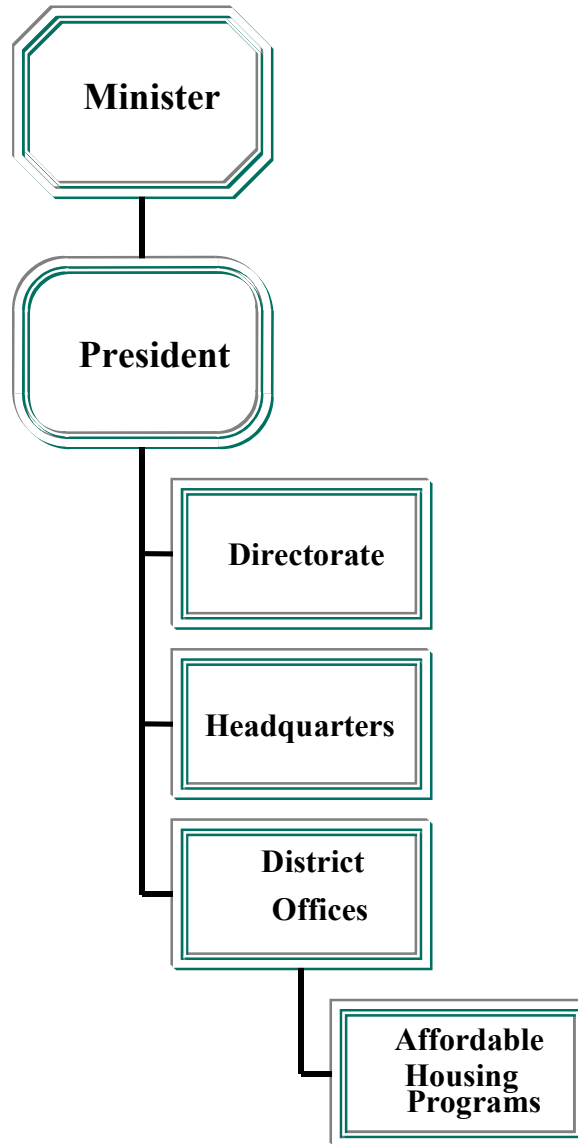
ᓱᓇᓃᓪᓗᓕᓂᓪᓐᓐᓐ ᓇᓗᓇᓃᓪᓗᓕᓂᓪᓐᓐᓐ



Kelvin Ng
Minister

Pamela Hine
President

ACCOUNTING STRUCTURE CHART



ባሮፕሮግራም ልምድ

ᓄᓇᓂᓴ ልኃፎሮ ሰጠሮ ምድር ስጦታ ለመስጠት፡ a) \$97,801,000 - ጋህፋፋ ልኃፎሮ ሰጠሮ ምድር ስጦታ ለመስጠት፤ b) \$60,465,000 - ከኮሎኒያል ልኃፎሮ ሰጠሮ ምድር ስጦታ ለመስጠት ለሌሎች ምንጮች ምክንያት ለሰጠሮ ምድር ስጦታ ለመስጠት ያረጋግጣል።

ፎካል ልምድ ስጦታ ለሰጠሮ ምድር ስጦታ ለመስጠት ለሌሎች ምንጮች ምክንያት ለሰጠሮ ምድር ስጦታ ለመስጠት ያረጋግጣል።

CORPORATE SUMMARY

The Nunavut Housing Corporation receives funding from the following sources: a) \$97,801,000 – contribution from the Government of Nunavut towards the operation of the Corporation; b) \$60,465,000 – Canada Mortgage and Housing Corporation (CMHC) and other sources, which is utilized in providing its full range of programs.

This summary and the following pages reflect the details of the total funding and are for review purposes only.

ሀሳብ	DESCRIPTION	ሰጠሮ ምድር ስጦታ	ሰጠሮ ምድር ስጦታ	ሰጠሮ ምድር ስጦታ
		2003-2004	2002-2003	2002-2003
		Main Estimates (\$000)	Revised Estimates (\$000)	Main Estimates (\$000)
ልምድ ስጦታ ለሰጠሮ ምድር ስጦታ	Compensation and Benefits	6,586	6,381	6,381
ጋህፋፋ ስጦታ ለሰጠሮ ምድር ስጦታ	Grants and Contributions	63,219	61,832	61,832
መጓጓዣ ስጦታ ለሰጠሮ ምድር ስጦታ	Travel and Transportation	1,341	1,442	1,442
ላሳይናሎች ስጦታ ለሰጠሮ ምድር ስጦታ	Materials and Supplies	68	68	68
መጠየቅ ስጦታ ለሰጠሮ ምድር ስጦታ	Purchased Services	433	433	433
ኮሙኒኬሽን ስጦታ ለሰጠሮ ምድር ስጦታ	Utilities	1,975	1,975	1,975
ኮንትራት ስጦታ ለሰጠሮ ምድር ስጦታ	Contract Services	31,390	31,594	31,594
የሰጠሮ ምድር ስጦታ ለሰጠሮ ምድር ስጦታ	Fees and Payments	73	73	73
ሌሎች ስጦታ ለሰጠሮ ምድር ስጦታ	Other Expenses	28,606	28,606	28,606
ጠቅላላ ስጦታ ለሰጠሮ ምድር ስጦታ	Total Operations & Maintenance	133,691	132,404	132,404
ጠቅላላ ስጦታ ለሰጠሮ ምድር ስጦታ	Total Capital	24,575	38,371	21,990
ጠቅላላ ስጦታ ለሰጠሮ ምድር ስጦታ	Total Expenditures	158,266	170,775	154,394

ᐱᑦᓐᓐᓐᓐᓐ ᐱᑦᓐᓐᓐᓐᓐ

ᓐᓐᓐᓐᓐᓐᓐ ᐱᑦᓐᓐᓐᓐᓐᓐᓐ ᐱᑦᓐᓐᓐᓐᓐᓐᓐᓐᓐᓐ ᐱᑦᓐᓐᓐᓐᓐᓐᓐᓐᓐᓐ ᐱᑦᓐᓐᓐᓐᓐ ᐱᑦᓐᓐᓐᓐ ᓐᓐᓐᓐᓐᓐᓐᓐᓐᓐᓐᓐᓐ ᐱᑦᓐᓐᓐᓐᓐᓐᓐᓐᓐᓐ (ᓄᓇᑭᑦ ᐃᓪᓐᓐᓐᓐᓐᓐᓐᓐᓐᓐᓐ ᓐᓐᓐᓐᓐᓐᓐᓐᓐᓐ). ᓄᓇᑭᑦ ᐃᓪᓐᓐᓐᓐᓐᓐᓐᓐᓐᓐᓐᓐ ᓐᓐᓐᓐᓐᓐᓐᓐᓐᓐᓐᓐᓐ ᓐᓐᓐᓐᓐᓐᓐᓐᓐ ᐱᓐᓐᓐᓐᓐᓐᓐᓐᓐᓐᓐᓐ ᐱᑦᓐᓐᓐᓐᓐᓐᓐᓐᓐᓐᓐᓐᓐᓐ ᓐᓐᓐᓐᓐᓐᓐᓐᓐᓐᓐᓐᓐᓐ \$28,003,000-ᓐᓐ ᐱᑦᓐᓐᓐᓐᓐᓐᓐᓐ.

DEBT REPAYMENT

Amortization charges relate to the repayment of principal and interest on long-term loans (CMHC). Canada Mortgage and Housing Corporation provides a contribution to the Housing Corporation to pay for the additional charges of \$28,003,000.

		ᓐᓐᓐᓐᓐᓐ ᐱᑦᓐᓐᓐᓐᓐᓐ	ᐱᓐᓐᓐᓐᓐᓐ ᐱᑦᓐᓐᓐᓐᓐᓐ	ᓐᓐᓐᓐᓐᓐ ᐱᑦᓐᓐᓐᓐᓐᓐ
		2003-2004	2002-2003	2002-2003
		Main	Revised	Main
		Estimates	Estimates	Estimates
		(\$000)	(\$000)	(\$000)
ᓐᓐᓐᓐᓐᓐᓐ	DESCRIPTION			
ᐃᓐᓐᓐᓐᓐᓐᓐ ᐱᑦᓐᓐᓐᓐᓐ ᐃᓐᓐᓐᓐᓐᓐᓐ	Compensation and Benefits	-	-	-
ᓐᓐᓐᓐᓐᓐᓐ ᐱᑦᓐᓐᓐᓐᓐ	Grants and Contributions	-	-	-
ᓐᓐᓐᓐᓐᓐᓐᓐᓐ ᐃᓐᓐᓐᓐᓐᓐᓐᓐ	Travel and Transportation	-	-	-
ᐱᑦᓐᓐᓐᓐᓐᓐᓐᓐ ᓐᓐᓐᓐᓐᓐᓐᓐ	Materials and Supplies	-	-	-
ᓐᓐᓐᓐᓐᓐᓐᓐᓐ ᐱᓐᓐᓐᓐᓐᓐᓐ	Purchased Services	-	-	-
ᓐᓐᓐᓐᓐᓐᓐᓐ	Utilities	-	-	-
ᓐᓐᓐᓐᓐᓐᓐ ᐱᓐᓐᓐᓐᓐᓐ	Contract Services	-	-	-
ᐱᑦᓐᓐᓐᓐᓐ ᐱᑦᓐᓐᓐᓐᓐᓐᓐᓐ	Fees and Payments	-	-	-
ᐱᑦᓐᓐᓐᓐ ᐱᑦᓐᓐᓐᓐᓐ	Other Expenses	28,003	28,003	28,003
ᓐᓐᓐᓐᓐᓐ ᐱᑦᓐᓐᓐᓐᓐ ᐱᓐᓐᓐᓐᓐᓐᓐᓐ	Total Operations & Maintenance	28,003	28,003	28,003
ᓐᓐᓐᓐᓐᓐ ᐱᑦᓐᓐᓐᓐᓐ	Total Capital	-	-	-
ᓐᓐᓐᓐᓐᓐ ᐱᑦᓐᓐᓐᓐᓐ	Total Expenditures	28,003	28,003	28,003

ᐃᓚᓂᓄᓐ ᐃᓚᓂᓄᓐ ᐃᓚᓂᓄᓐ ᐃᓚᓂᓄᓐ AFFORDABLE HOUSING PROGRAMS

	ᓂᓄᓂᓄᓐ ᐃᓚᓂᓄᓐ 2003-2004 Main Estimates (\$000)	ᐃᓚᓂᓄᓐ ᐃᓚᓂᓄᓐ ᐃᓚᓂᓄᓐ ᐃᓚᓂᓄᓐ 2002-2003 Revised Estimates (\$000)	ᓂᓄᓂᓄᓐ ᐃᓚᓂᓄᓐ 2002-2003 Main Estimates (\$000)
ᓂᓄᓂᓄᓐ ᐃᓚᓂᓄᓐ Grants and Contributions			
ᐃᓚᓂᓄᓐ Contributions			
<p>ᐃᓚᓂᓄᓐ ᐃᓚᓂᓄᓐ ᐃᓚᓂᓄᓐ ᐃᓚᓂᓄᓐ</p> <p>ᓂᓄᓂᓄᓐ ᐃᓚᓂᓄᓐ ᐃᓚᓂᓄᓐ ᐃᓚᓂᓄᓐ</p> <p>ᐃᓚᓂᓄᓐ ᐃᓚᓂᓄᓐ ᐃᓚᓂᓄᓐ ᐃᓚᓂᓄᓐ</p> <p>ᓂᓄᓂᓄᓐ ᐃᓚᓂᓄᓐ ᐃᓚᓂᓄᓐ ᐃᓚᓂᓄᓐ</p>	62,703	61,316	61,316
<p>Public Housing Program</p> <p>Funding for the provision of public housing and rent supplement programs to low income residents of Nunavut.</p>			
<p>ᓂᓄᓂᓄᓐ ᐃᓚᓂᓄᓐ ᐃᓚᓂᓄᓐ ᐃᓚᓂᓄᓐ</p> <p>ᓂᓄᓂᓄᓐ ᐃᓚᓂᓄᓐ ᐃᓚᓂᓄᓐ ᐃᓚᓂᓄᓐ</p> <p>ᓂᓄᓂᓄᓐ ᐃᓚᓂᓄᓐ ᐃᓚᓂᓄᓐ ᐃᓚᓂᓄᓐ</p> <p>ᓂᓄᓂᓄᓐ ᐃᓚᓂᓄᓐ ᐃᓚᓂᓄᓐ ᐃᓚᓂᓄᓐ</p>	516	516	516
<p>Canada Mortgage and Housing Unilateral Programs</p> <p>Federal Funding for non-profit, community based organizations for the provision of subsidized support for Rent Geared to Income, co-op and Special Purpose Projects.</p>			
ᓂᓄᓂᓄᓐ ᐃᓚᓂᓄᓐ Total Contributions	63,219	61,832	61,832
ᓂᓄᓂᓄᓐ ᓂᓄᓂᓄᓐ ᐃᓚᓂᓄᓐ Total Grants and Contributions	63,219	61,832	61,832

