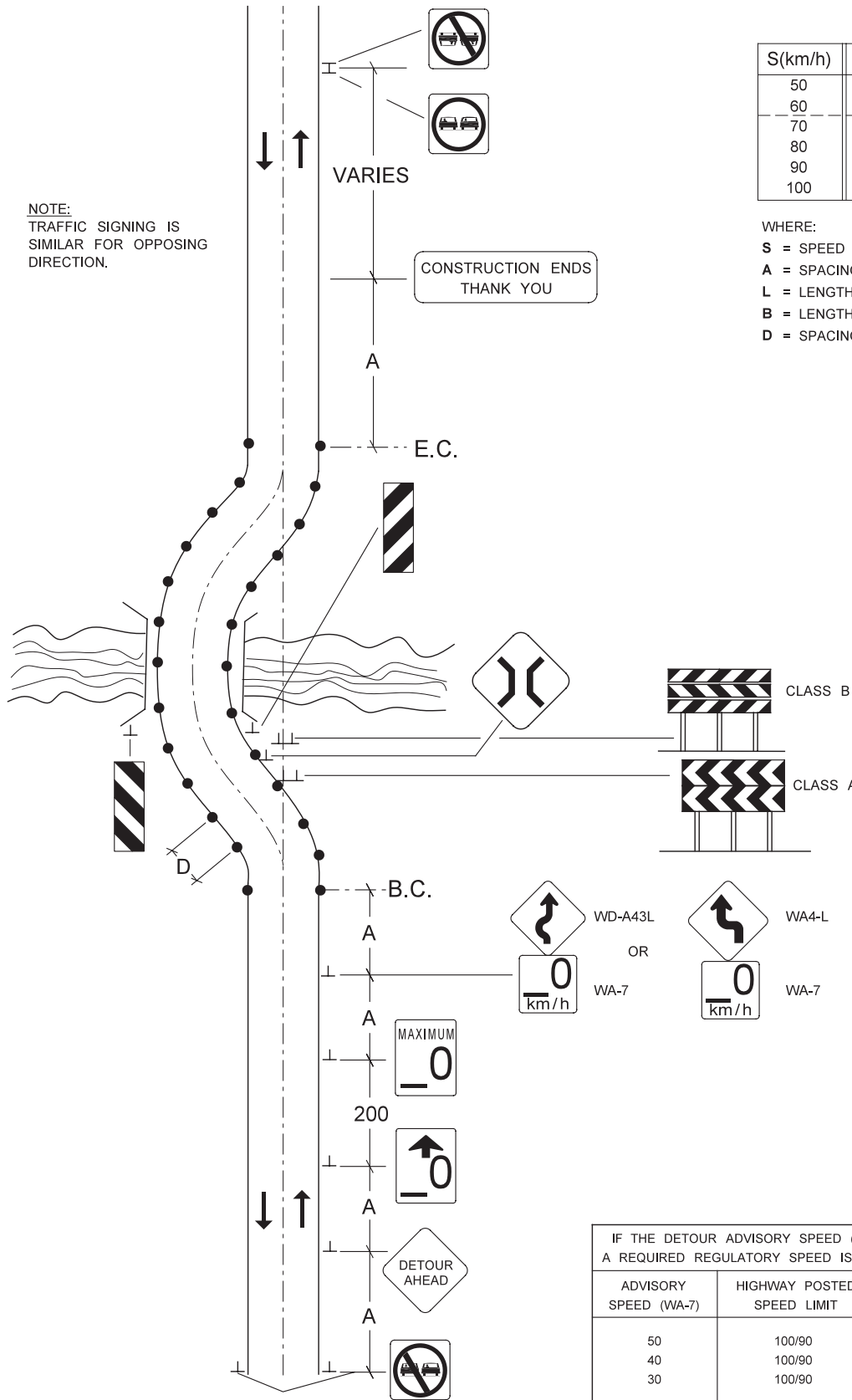




AREAS IN THE WORK ZONE

SHOOFLY DETOUR - LONG TERM

NOTE:
TRAFFIC SIGNING IS
SIMILAR FOR OPPOSING
DIRECTION.



S(km/h)	A(m)	L(m)	B(m)	D(m)
50	50	60	35	15
60	50	90	45	15
70	75	120	50	15
80	100	175	55	15
90	100	200	65	20
100	150	250	70	20

WHERE:

- S = SPEED LIMIT
- A = SPACING BETWEEN SIGNS
- L = LENGTH OF TAPER
- B = LENGTH OF LONGITUDINAL BUFFER SPACE
- D = SPACING BETWEEN DELINEATION DEVICES

IF THE DETOUR ADVISORY SPEED (WA-7) IS LESS THAN 60 km/h, THEN A REQUIRED REGULATORY SPEED IS REQUIRED ON THE APPROACHES.

ADVISORY SPEED (WA-7)	HIGHWAY POSTED SPEED LIMIT	REGULATORY SPEED (RB-1) AND (RB-5)
50	100/90	70
40	100/90	70
30	100/90	60

NOTE: IF A REGULATORY SPEED REDUCTION IS NOT REQUIRED, THEN MAINTAIN A DISTANCE OF 150m BETWEEN THE C-2 AND THE C-4.