

*CANADA/MANITOBA  
ECONOMIC DEVELOPMENT  
PARTNERSHIP AGREEMENT*

ANNUAL REPORT 2000/2001



**MINISTER OF  
INTERGOVERNMENTAL AFFAIRS**

Room 901  
Legislative Building  
Winnipeg, Manitoba, CANADA  
R3G 0V8  
General Office: (204) 945-3788  
Fax: (204) 945-1883

March 31, 2001

His Honour  
The Honourable Peter M. Liba, C.M.  
Lieutenant Governor of Manitoba

May It Please Your Honour:

I have the privilege of presenting, for the information of Your Honour, the Annual Report of the Canada/Manitoba Economic Development Partnership Agreement for the fiscal year ended March 31, 2001.

Respectfully submitted,

*Jean Friesen*

Jean Friesen  
Minister of Intergovernmental Affairs





**Deputy Minister of  
Intergovernmental  
Affairs**

Legislative Building

Winnipeg, Manitoba, R3C 0V8  
CANADA  
General Office (204) 945-3787  
Fax (204) 945-5255

March 31, 2001

Honourable Jean Friesen  
Minister of Intergovernmental Affairs

Dear Minister:

I have the honour to submit for your consideration the Annual Report on the Canada/Manitoba Economic Development Partnership Agreement for the fiscal year ended March 31, 2001.

The \$40 million Canada/Manitoba Economic Development Partnership Agreement (EDPA), signed by the Manitoba and federal governments in May 1998, continues a history of federal/provincial co-operation in Manitoba's economic development through a partnership program of strategic investments with other interested stakeholders. The 2000/2001 fiscal year completes the third year of the five year Agreement.

As of March 31, 2001, some 31 economic development projects amounting to \$26 million have been committed under the program. Significant projects undertaken in the current year include \$1.4 million for the Arts Consortium renovation and relocation to the former Ashdown Building in Winnipeg's Exchange District; \$250,000 towards the establishment of a Virtual Reality Research and Innovation Centre at the Industrial Technology Centre on Niakwa Road in Winnipeg; \$300,000 for the Society for Manitobans with Disabilities (SMD) AbiTech to advance the application of technology for persons with disabilities; and \$150,000 to establish a Canadian centre of excellence in malting, brewing and end-use testing of malting barley varieties.

In the coming fiscal year, federal and provincial governments will continue to partner with stakeholders in our community to complete projects underway and create new economic opportunities for tomorrow.

Sincerely,

A handwritten signature in black ink, appearing to read 'Marie Elliott'.

Marie Elliott  
Deputy Minister



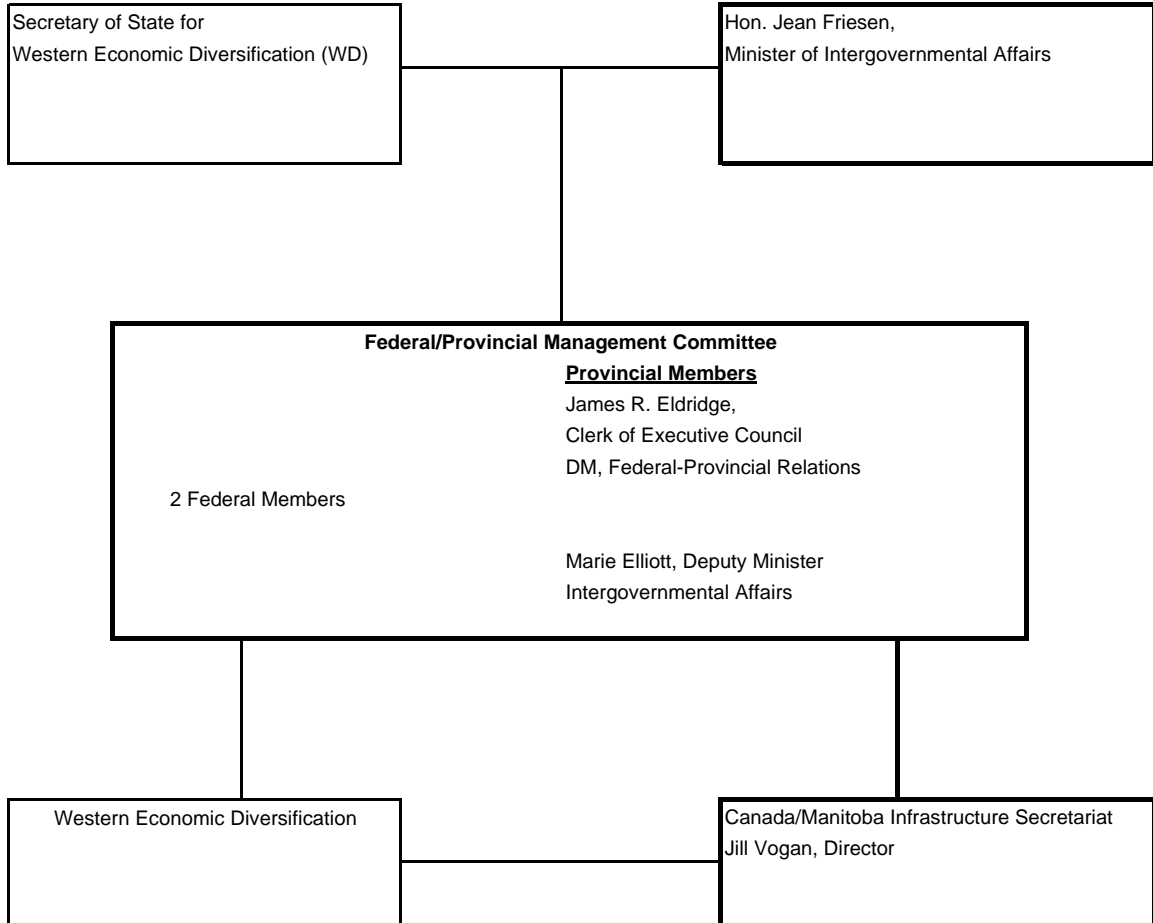
# TABLE OF CONTENTS

	Page
<b>Organizational Chart</b>	8
<b>Preface</b>	9
Report Structure	9
Mandate	9
Program Overview	10
Strategic Priorities	
<b>The Canada/Manitoba Economic Development Partnership Agreement -- Projects Funded</b>	10
Business Development Projects	10
Economic Innovation Projects	11
Regional Strategic Priorities Projects	12
Innovative Economic Development Studies Projects	14
<b>Financial Information</b>	
Schedule 1 - Expenditure Summary	16
Schedule 2 - Expenditure Summary by Appropriation 13-7(b)	17
Schedule 3 - Actual Expenditures, Three-Year Historical Summary	18
<b>Contact Information</b>	19

# ORGANIZATION CHART

## CANADA/MANITOBA ECONOMIC DEVELOPMENT PARTNERSHIP AGREEMENT

(as of March 31, 2001)



## PREFACE

### Report Structure

The Annual Report is organized in accordance with the program's appropriation structure, which reflects the program's authorized votes approved by the Legislative Assembly. The Report includes information at the Main Appropriation level relating to the program's objectives, actual results achieved, financial performance and variances, and a three year historical table of expenditures.

Appropriation 13-7(b) represents Manitoba's 50 per cent contribution to the total program funds. Matching contributions are provided by the federal government. The Agreement allows for flexibility in project financing and participation, so that each party may decide to finance or participate in any one project exclusively or jointly - as long as total expenditures funded are shared by Manitoba and Canada on a fifty-fifty basis.

### Mandate

Section 2.1 of the ***Canada/Manitoba Economic Development Partnership Agreement*** indicates the purpose of the Agreement is:

“...to provide a mechanism for achieving greater federal-provincial cooperation in realizing the economic and regional development potential of the Province of Manitoba by way of collaboration.”

### Program Overview

From 1998 through March 2002, the ***Canada/Manitoba Economic Development Partnership Agreement*** (EDPA) will direct \$40 million of federal/provincial funding into strategic projects with the potential to lever additional partnerships and investments. The federal and provincial governments will each contribute \$20 million to the Agreement.

EDPA continues a history of federal/provincial cost-shared economic development agreements between the two governments. The purpose of the Agreement is to promote greater federal-provincial co-operation in Manitoba's economic development through a partnership program of strategic investments with other interested stakeholders.

The ministers responsible for the Agreement in Manitoba are Manitoba's Minister of Intergovernmental Affairs, the Honourable Jean Friesen, and for the federal government, the Secretary of State for Western Economic Diversification Canada. The Agreement is administered for Manitoba by the Canada/Manitoba Infrastructure Secretariat and for the federal government by Western Economic Diversification Canada.

## Strategic Priorities

The \$40 million **Canada/Manitoba Economic Development Partnership Agreement** is a collaborative partnership focusing on the following strategic priorities:

**Business Development** - Projects focus on initiatives which advance entrepreneurship potential, particularly among youth, Aboriginal people, and immigrants; enhance expertise in the small business sector; and promote products and services nationally and internationally.

**Economic Innovation** - The agreement supports economic and technological innovation within Manitoba industry as well as increased collaboration with local research institutions to develop and commercialize leading edge products for global markets.

**Regional Strategic Priorities** - Funding is earmarked for projects supporting community-based urban and rural economic development in the areas of transportation, information technology, value-added agriculture, biotechnology, health care industries, and tourism, culture and heritage.

**Innovative Economic Development Studies** - Support is provided for strategic research activities to determine potential directions, and the feasibility, of longer term initiatives with the capacity to generate economic, industrial and employment growth beyond the term of the agreement.

## EDPA PROJECTS FUNDED as of March 31, 2001

*Unless indicated otherwise, project funding is cost-shared 50-50 by the Governments of Manitoba and Canada.*

### **Business Development Projects**

#### **Norwood Grove Business Improvement Zone (BIZ)**

**Funding - \$250,000 (Federal Contribution \$187,500, Provincial Contribution \$62,500)**

**Announced June 21, 2000**

Streetscaping and improvements to Norwood Grove will enhance this area in southeast Winnipeg. A permanent outdoor bandshell will be constructed in Coronation Park, along with lighting and landscaping. Streetscaping will be developed along Marion St. and St. Mary's Road. The enhancements will allow the Norwood Grove Business Improvement Zone (BIZ) to offer programming such as business expositions, art exhibits and entertainment.

#### **CraftLink Tours**

**Funding - \$45,000**

**Announced June 14, 1999**

Tourists and Manitoba's craft industry benefited from CraftLink, a bus and walking tour linking several Winnipeg craft venues, galleries and restaurants during the Pan Am Games in the summer of 1999. The \$82,000 project provided a unique marketing opportunity for these small businesses and artisans while creating employment for eight to 10 people. Manitoba's Tourism Division also provided a \$10,000 contribution for the project's marketing/promotional strategy.

**Prairie Production Centre****Funding - \$1 million****Announced December 17, 1998**

Phase I of the facility was officially opened in 1999. The facility, located in Winnipeg's West End, consists of a 15,000 sq. ft. sound stage with 3,750 sq. ft. of adjacent production office space. Plans for phase two of the project include two additional sound stages, post production facilities and additional production offices which will be used to attract a variety of production and economic opportunities for Manitoba's film industry.

**Conseil de développement économique des municipalités du Manitoba (CDEM)****Funding - \$400,000****Announced September 25, 1998**

A co-ordinated, strategic community economic plan for 11 Manitoba bilingual municipalities and incorporated towns is helping franco-manitobain communities attract investment from across Canada and the francophone world.

**Economic Innovation Projects****Industrial Technology Centre (ITC) – Manitoba Virtual Reality Research and Innovation Centre****Funding - \$250,000 (Manitoba Contribution)****Announced March 9, 2001**

A contribution of \$250,000 will contribute to the development of a state-of-the-art Virtual Reality Research and Innovation Centre at Winnipeg's Industrial Technology Centre. This Centre will provide a leading-edge innovation service for Manitoba companies through the use of visualization technology to improve product design and lower costs.

**Canadian Malting Barley Technical Centre (CMBTC)****Funding - \$150,000****Announced March 2, 2001**

CMBTC will be established as the Canadian centre of excellence in malting, brewing and end-use quality testing of malting barley varieties. The centre will be the primary destination for incoming customer delegations from export markets, as well as the focal point for applied technical research and marketing support.

**Society for Manitobans with Disabilities – AbiTech****Funding - \$300,000****Announced February 15, 2001**

The Society for Manitobans with Disabilities (SMD) Alliance will develop SMD AbiTech, a Canadian centre for abilities and technology, as a social and economic development enterprise created to accelerate development, testing, application and promotion of technologies to improve the quality of life and productivity of individuals with disabilities.

**University of Manitoba – SMART Park****Funding - \$1.3 million (Federal Contribution)****Announced October 15, 1999**

Some 108 acres of land on the University's Fort Garry Campus will be transformed into an innovative research park that will foster research collaboration between the University and industry and boost the transfer of new technologies to the marketplace. The provincial government contributed an additional \$2.8 million through the Economic Innovation & Technology Council, bringing the total federal-provincial contribution to \$5.6 million.



**Innovation Corridor for Technology Feasibility Study****Funding - \$40,000****Announced February 19, 1999**

The study was undertaken to determine the feasibility of creating a downtown centre for high-tech companies in Winnipeg. The study was developed by the Manitoba Innovation Network in conjunction with an advisory group consisting of various companies and institutions.

**University of Manitoba - SMART Park****Funding - \$214,000 (Federal Contribution)****Announced October 2, 1998**

The University of Manitoba developed the detailed design and engineering drawings required to create SMART Park, on the Fort Garry Campus. The SMART Park will provide opportunities for partnerships between the University and local high-tech firms. The Manitoba Government contributed \$250,000 for design work through Economic Innovation & Technology Council.

**Filmless Radiology****Funding - \$2.5 million****Announced June 26, 1998**

A \$5 million filmless radiology pilot project provides computerized storage and secure transmission of radiology images using Intranet technology. The project provided both economic and health benefits to Manitobans.

**Centre for Health Research for the Elderly****Funding - \$4.2 million****Announced May 22, 1998**

The establishment of a \$12.6 million, world-class research facility dedicated to diseases related to aging is positioning the St. Boniface General Hospital in Winnipeg as a leader in health research for the elderly.

**Regional Strategic Priorities Projects****Arts Consortium – Ashdown Building Renovation****Funding – \$1.4 million****Announced February 9, 2001**

The former Ashdown Hardware Store in Winnipeg's Exchange District is being renovated to house the School of Contemporary Dancers, the Manitoba Conservatory of Music & Arts, and Winnipeg's Contemporary Dancers. When renovations are complete, the basement, first and second floors of the building, along with the annex next door, will provide space for studios, performance spaces and offices for each arts group.

**St. James Assiniboia Senior Centre****Funding - \$150,000****Announced August 9, 1999**

A major renovation and expansion to the St. James Assiniboia Senior Centre allows the centre to offer additional programs and services to meet the needs of seniors in Winnipeg. The facility provides health support services, educational programs, physical fitness, volunteer opportunities and special interest activities which enhance the quality of life of seniors within the community.

**Blumenort Waste Water Facility Expansion****Funding - \$1.2 million (Manitoba Contribution)****Announced August 4, 1999**

To support business and residential growth in rural Manitoba, the Manitoba government is contributing \$2.4 million for the expansion of a wastewater treatment facility in Blumenort. Funding consists of \$1.2 million each through the Canada/Manitoba Economic Development Partnership Agreement and the Manitoba Rural Economic Development Initiative (REDI).

**Inglis Elevators National Historic Site**  
**Funding - \$198,223 (Manitoba Contribution)**  
**Announced July 23, 1999**

Five historic wooden grain elevators, designated as a national historic site in 1996, are being restored and refurbished at the Inglis Elevators National Historic Site in Inglis, Manitoba. The rejuvenated tourist attraction will feature agricultural displays and working grain-processing equipment, and will enhance tourism within the Parkland region. The province contributed an additional \$82,500 through Manitoba Culture and Tourism programs.

**Aboriginal Tribal Journey & Cultural Village**  
**Funding - \$100,000 (Federal Contribution)**  
**Announced June 30, 1999**

During the 1999 Pan American Games, the Aboriginal Culture Village located at The Forks in Winnipeg showcased Canada's First Nations' culture through music, dance, theatre, traditional activities and kiosks. The Tribal canoe journey re-enacted travel on traditional Aboriginal trade routes along the Hayes River, East shoreline of Lake Winnipeg and down the Red River to Winnipeg, culminating with an arrival ceremony in June 1999.

**Swan Valley Natural Gas Expansion**  
**Funding - \$2.128 million**  
**Approved: April 1, 1999**

Swan Valley area communities are now tapping into the benefits of natural gas. This \$14.5 million project has extended natural gas from the Saskatchewan-Manitoba border to the communities of Swan River, Minitonas and Benito.

**Governor's House at Fort Gibraltar**  
**Funding - \$600,000**  
**Announced February 12, 1999**

Historic Fort Gibraltar will become a year-round tourist attraction with the addition of *Governor's House*, a \$1.3 million multi-purpose reception and interpretative centre. Located within the log palisade of Fort Gibraltar in Voyageur Park, the historical replica will showcase the Canadian fur-trading era and hold various events that will lead to economic spin-offs for related industries.

**SEED Winnipeg Inc.**  
**Funding - \$450,000**  
**Announced January 29, 1999**

SEED Winnipeg, a non-profit organization, expanded its business services and job creation for low-income residents in Winnipeg's north end. The funding assisted with project start-up and operating costs for three years.

**Manitoba Sports Hall of Fame & Museum**  
**Funding - \$50,000**  
**Announced January 6, 1999**

The Manitoba Sports Hall of Fame & Museum relocated to the fifth floor of The Bay downtown in Winnipeg. The increased space enabled the museum to showcase sports history and champions to a greater number of Manitobans and tourists.

**Prairie Dog Central**  
**Funding - \$600,000**  
**Announced December 18, 1998**

The Prairie Dog Central, one of the oldest vintage locomotive railways in North America, relocated its operations in the summer of 1999. The \$1.35 million project gives more tourists and Manitobans a chance to experience what it was like to ride a steam engine.

**Winnport Logistics Ltd.****Funding - \$1.5 million****Announced November 13, 1998**

Winnport, the international cargo airline operation was designed to increase the packaging, assembly and manufacturing activities in Manitoba, improve market access for Manitoba exporters and capitalize on Manitoba's strategic location to the Mid-Continent Trade Corridor.

**Hanover/La Broquerie Natural Gas Expansion****Funding - \$1 million****Announced November 6, 1998**

A \$9 million natural gas expansion means substantial savings on energy bills for homes, farms, schools and commercial operations for residents and businesses in Hanover and La Broquerie. The additional service will attract new industries and create economic spin-offs for the entire community. The previous Canada/Manitoba Infrastructure Works program contributed an additional \$3.25 million towards the initiative.

**Assiniboine Park Bandshell – “The Lyric”****Funding - \$150,000****Announced November 2, 1998**

A \$750,000, permanent outdoor bandshell in Winnipeg's Assiniboine Park enhances the long-standing tradition of outdoor concerts in the park, making the area an even greater tourist attraction. Events include music, dance, theatre and children's programs, and showcase some of Manitoba's world-renowned cultural and entertainment groups such as the Royal Winnipeg Ballet, Winnipeg Symphony Orchestra and the Winnie the Pooh Friendship Day.

**Winnipeg Stadium Improvements****Funding - \$3 million****Announced September 17, 1998**

An \$8.75 million renovation at the Winnipeg Stadium assisted the facility in hosting the Pan Am Games' opening and closing ceremonies, as well as beach volleyball events. Over the long-term, the renovations are helping attract more high-profile entertainers and sporting events to the city.

**The Aquatic Hall of Fame****Funding - \$867,000****Announced June 24, 1998**

The national Aquatic Hall of Fame at Winnipeg's Pan Am Pool was expanded to highlight Manitoba's water sports athletes and boost tourism opportunities.

**Gimli Harbourfront Development****Funding - \$1.2 million****Announced June 19, 1998**

A \$1.8 million development of Gimli's south harbour strengthens its tourism and fishing industries and helped the town prepare to host the 1999 Pan Am Games sailing events. The project included the construction of a new breakwater, boat berths, sidewalks, parking, and a dredged harbour. The enhancements position the region to attract more national and international sailing competitions and assist in developing the local fishing economy.

**Innovative Economic Development Studies Projects****I.C.E. Productions Ltd.****Funding - \$25,000 (Federal Contribution)****Approved July 6, 2000**

A feasibility study to determine the viability of establishing a national film training centre in Winnipeg to educate aboriginal people on all aspects of the film industry including script-writing production and directing as well as post production, financial management and marketing components of the industry.

**Keewatinowi Network Feasibility Study****Funding - \$44,000****Announced April 30, 1999**

The study examined the feasibility of establishing a new technology network to boost economic development in three Island Lakes First Nations communities, located 270 km southeast of Thompson. The Kitayan Community Futures Development Corporation commissioned the study and involved consultations with community members, local First Nations, local educational authorities and government stakeholders.

**Nunavut Hydro and Transportation Corridor Study****Funding - \$500,000****Announced September 25, 1998**

The study examined trade and economic opportunities between the governments of Manitoba and Nunavut. The study also explored the feasibility of low-voltage direct current transmission from Churchill to Keewatin, and assessed opportunities to provide Manitoba-based re-supply systems for the Keewatin region.

## CANADA/MANITOBA ECONOMIC DEVELOPMENT PARTNERSHIP AGREEMENT

### EXPENDITURE SUMMARY

For fiscal year ending March 31, 2001 with comparative figures for the previous fiscal year.

ELEMENT	ACTUAL EXPENDITURE 2000/01 (\$000's)	ACTUAL 1999/00 (\$000's)	INCREASE (DECREASE)	Expl. No.
Manitoba's gross expenditures under the Canada/Manitoba Economic Development Partnership Agreement	<b>3,303.8</b>	3,830.2	(526.4)	1&2
Less: Federal Cost Recovery	<b>(161.1)</b>	(121.8)		
Manitoba's Net Contribution to Approved Projects	<b><u>3,142.7</u></b>	<u>3,708.4</u>		

#### EXPLANATIONS:

- 2000/2001 actual expenditures were lower than the 1999/00 actual expenditures as expenditures are dependent upon the timing of joint federal/provincial project decisions, as well as proponents' timing of project implementation.
- Actual Expenditures include gross costs of provincially-administered projects.

**CANADA/MANITOBA ECONOMIC DEVELOPMENT  
PARTNERSHIP AGREEMENT**

**EXPENDITURE SUMMARY  
BY APPROPRIATION 13-7(b)**

	<b>Actual Gross Expenditures 2000/01 (\$000's)</b>	<b>Estimates of Expenditure 2000/01</b>	<b>Variance Over/(Under)</b>	<b>Expl. No.</b>
Canada/Manitoba Economic Development Partnership Agreement	<b>3,303.8</b>	5,538.8	(2,235.0)	1&2

**EXPLANATIONS:**

1. 2000/2001 actual expenditures were lower than the 2000/01 Estimates of Expenditures as actual expenditures are dependent upon the timing of joint federal/provincial project decisions, as well as proponents' timing of project implementation.
2. Actual Expenditures include gross costs of provincially-administered projects.

**Reconciliation Statement  
(\$'000's)**

2000/01 Estimates.....\$5,538.8

**CANADA/MANITOBA ECONOMIC DEVELOPMENT  
PARTNERSHIP AGREEMENT  
THREE-YEAR HISTORICAL SUMMARY OF MANITOBA'S CONTRIBUTION**

**ACTUAL EXPENDITURES FOR YEARS ENDING  
March 31, 1999 – March 31, 2001**

	Actual Expenditures (\$000's)			Total Manitoba Contribution at March 31, 2001
	1998/99	1999/00	2000/01	
<hr/>				
Canada/Manitoba Economic Development Partnership Agreement				
Net Expenditures to Date	2,416.4	3,708.4	3,142.7	9,267.5
<hr/>				

## FOR MORE INFORMATION CONTACT:

Jill Vogan, Director  
Canada/Manitoba Infrastructure Secretariat  
1140-363 Broadway  
Winnipeg, Manitoba  
R3C 3N9

Phone: (204) 945-4074 or 1-800-268-4883

Fax: (204) 948-2035

E-mail: [infra@gov.mb.ca](mailto:infra@gov.mb.ca)

Canada/Manitoba Economic Development Partnership Agreement Web-site: [www.gov.mb.ca/finance/edpa](http://www.gov.mb.ca/finance/edpa)