

ᐃᓕᓐᓂᐱᓐᓂᓐᓂᓐ



EDUCATION

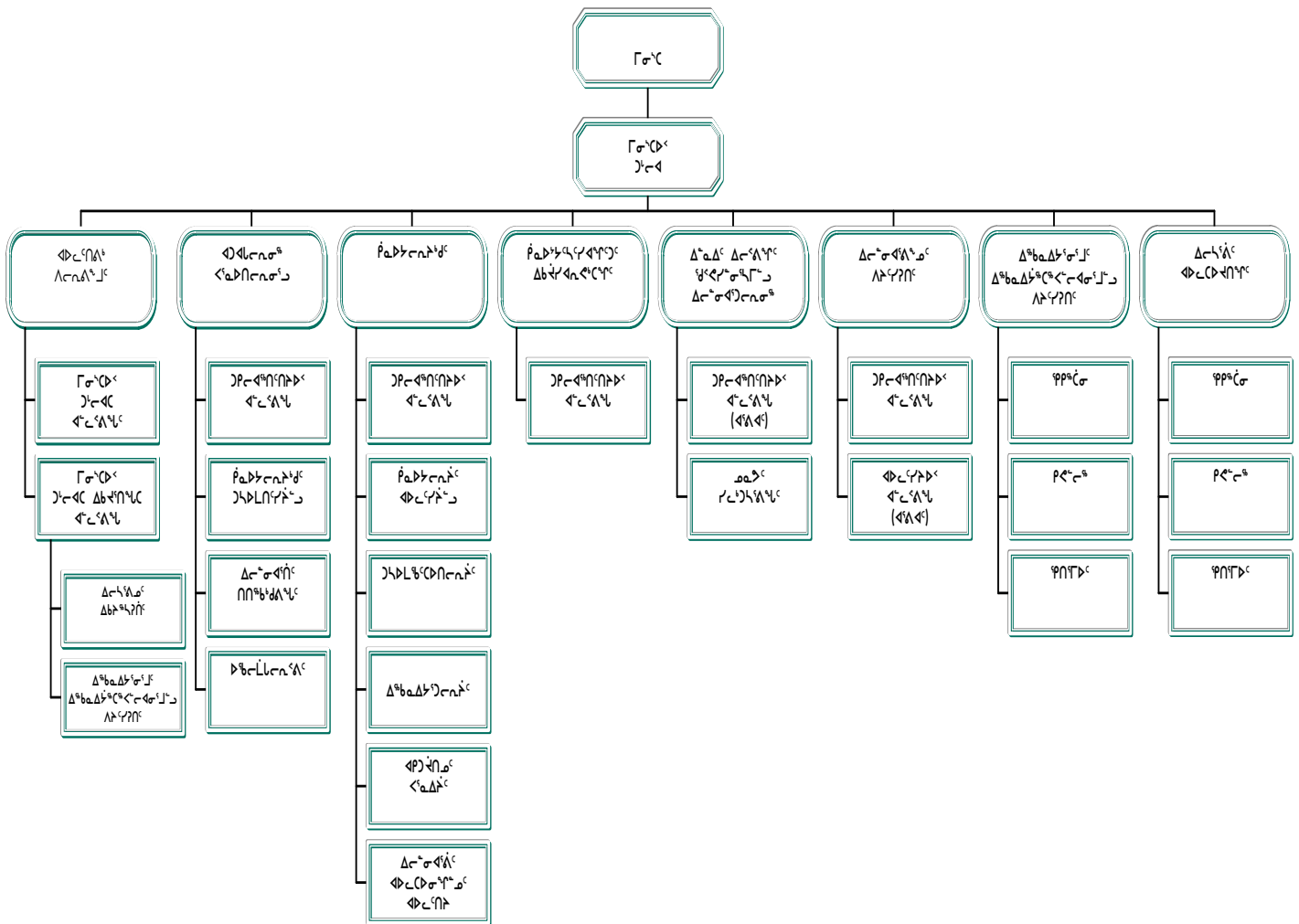
ᐱᓕ ᓂᓐᓃᐅᓂᓐᓃ
 ᐱᓕ

ᐅᓂᓐᓃᐅᓂᓐᓃ ᐃᓂᓐᓃᐅᓂᓐᓃ
 ᐱᓕ ᐅᓂᓐᓃᐅᓂᓐᓃ ᐅᓂᓐᓃᐅᓂᓐᓃ

ᐱᓕ ᓂᓐᓃᐅᓂᓐᓃ
 ᐱᓕ ᐅᓂᓐᓃᐅᓂᓐᓃ

ᐅᓂᓐᓃᐅᓂᓐᓃ ᐅᓂᓐᓃᐅᓂᓐᓃ
 ᐱᓕ ᐅᓂᓐᓃᐅᓂᓐᓃ ᐅᓂᓐᓃᐅᓂᓐᓃ

ᐱᓕ ᐅᓂᓐᓃᐅᓂᓐᓃ ᐅᓂᓐᓃᐅᓂᓐᓃ



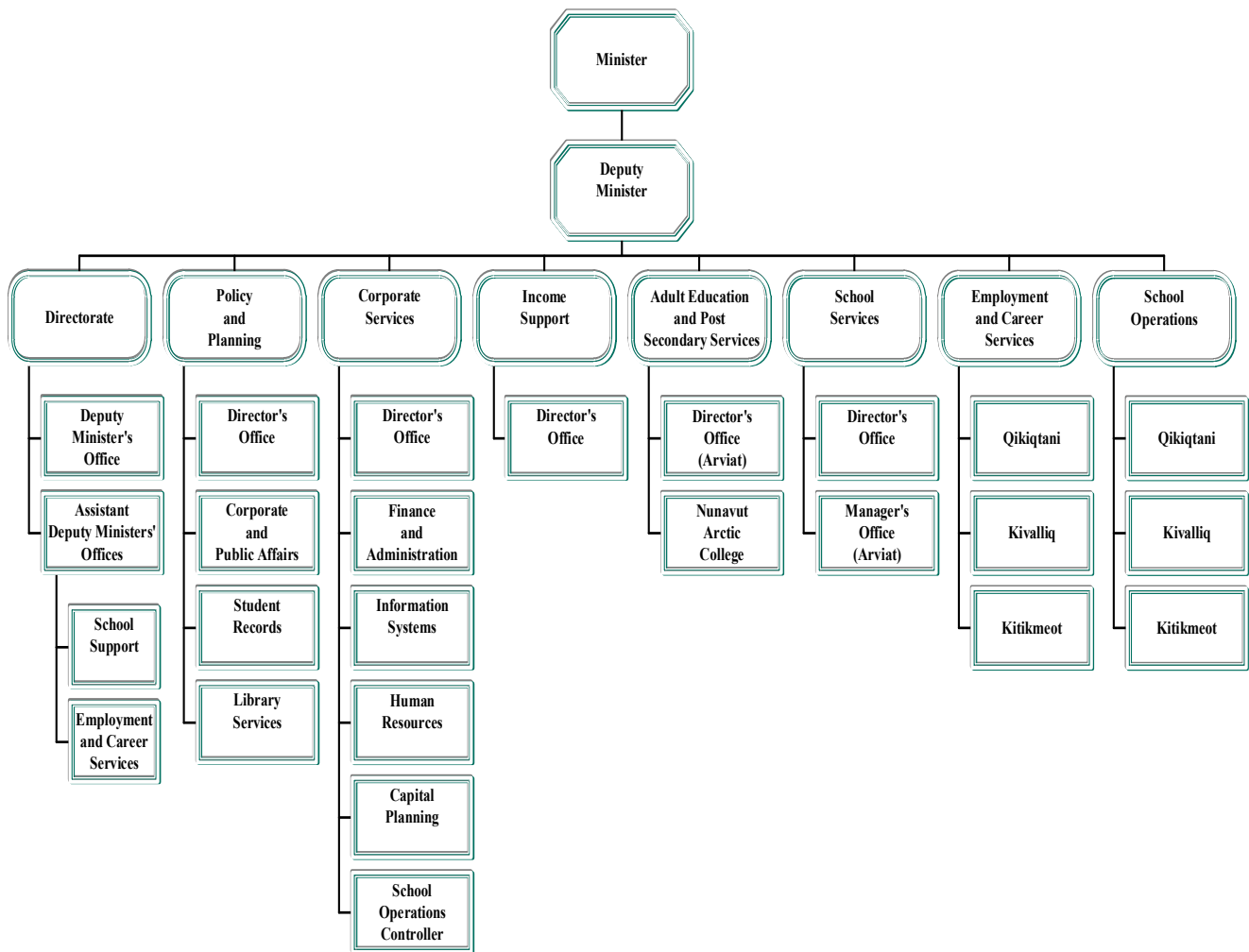
Peter Kilabuk
 Minister

Naullaq Arnaquq
 Assistant Deputy Minister

Tom Rich
 Deputy Minister

Kathy Okpik
 Assistant Deputy Minister

ACCOUNTING STRUCTURE CHART



MISSION

Education provides the path and guides the life-long learning journey of Nunavummiut by providing excellence in education and training so that Nunavummiut benefit from their past and create their own future for a productive, prosperous society.

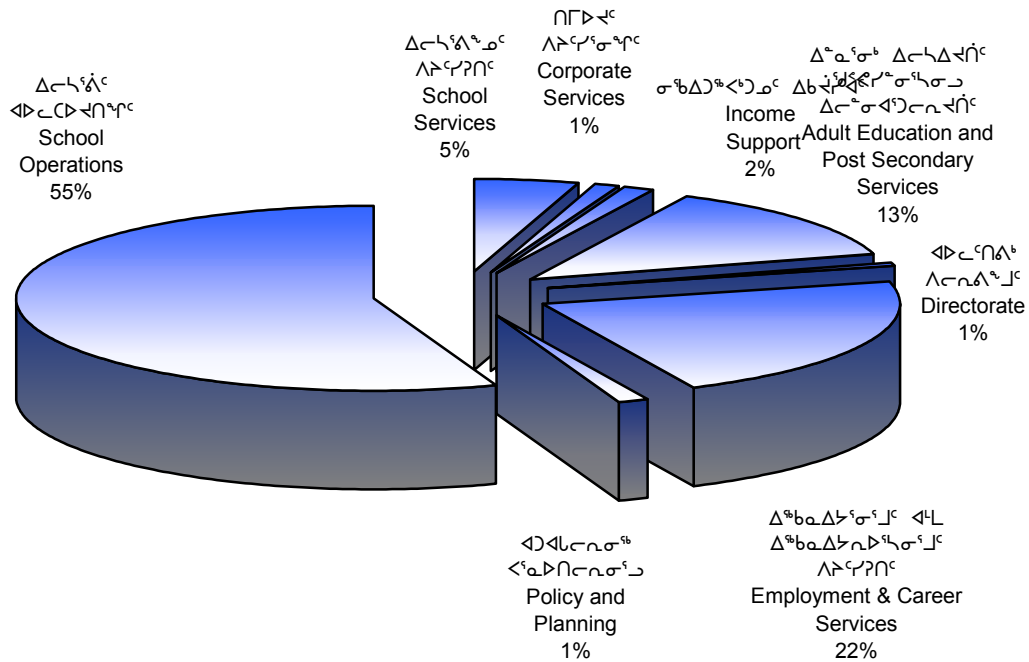
To deliver the excellence in programming implied by the mission, the Department will consult and work in close partnership with the residents of Nunavut: Elders, communities, schools, Nunavut Arctic College, Inuit and business organizations, other levels of government and other Government of Nunavut departments.

The role of consultation in the decision-making processes will be expected in the development and implementation of all our programs and services. Grounded in Inuit Qaujimajatuqangit, the activities of the department will provide opportunities to all Nunavummiut that encourage life-long learning.

GOALS

- ◆ To foster educational leadership by Inuit.
- ◆ To provide educational frameworks grounded in Inuit Qaujimajatuqangit that will enable and encourage communities to make a commitment to long-term plans for culture, heritage and language.
- ◆ To develop program linkages that are seamless, accessible, affordable, responsive and effective in stimulating increased employment and student success.
- ◆ To operate as a department that is accountable and responsive to learners and partners, while demonstrating the effective use of public resources.

ᐃᐱᑦᓂᐳᑦ ᐳᑦᓂᐳᑦ
DETAIL OF EXPENDITURES



ᐳᑦᓂᐳᑦ	DESCRIPTION	2002-2003	2001-2002	2001-2002
		ᐳᑦᓂᐳᑦ ᐳᑦᓂᐳᑦ Main Estimates (\$000)	ᐳᑦᓂᐳᑦ ᐳᑦᓂᐳᑦ Revised Estimates (\$000)	ᐳᑦᓂᐳᑦ ᐳᑦᓂᐳᑦ Main Estimates (\$000)
ᐳᑦᓂᐳᑦ ᐳᑦᓂᐳᑦ ᐳᑦᓂᐳᑦ	Compensation and Benefits	74,469	70,869	67,272
ᐳᑦᓂᐳᑦ ᐳᑦᓂᐳᑦ	Grants and Contributions	34,969	32,950	33,948
ᐳᑦᓂᐳᑦ ᐳᑦᓂᐳᑦ	Travel and Transportation	3,435	3,268	4,772
ᐳᑦᓂᐳᑦ ᐳᑦᓂᐳᑦ	Materials and Supplies	775	1,180	1,862
ᐳᑦᓂᐳᑦ ᐳᑦᓂᐳᑦ	Purchased Services	1,102	1,390	1,477
ᐳᑦᓂᐳᑦ ᐳᑦᓂᐳᑦ	Utilities	7,543	7,896	5,914
ᐳᑦᓂᐳᑦ ᐳᑦᓂᐳᑦ	Contract Services	5,780	5,679	6,317
ᐳᑦᓂᐳᑦ ᐳᑦᓂᐳᑦ	Fees and Payments	23,658	23,063	23,123
ᐳᑦᓂᐳᑦ ᐳᑦᓂᐳᑦ	Other Expenses	818	960	788
ᐳᑦᓂᐳᑦ ᐳᑦᓂᐳᑦ ᐳᑦᓂᐳᑦ	Total Operations & Maintenance	152,549	147,255	145,473
ᐳᑦᓂᐳᑦ ᐳᑦᓂᐳᑦ	Total Capital	19,500	33,390	29,320
ᐳᑦᓂᐳᑦ ᐳᑦᓂᐳᑦ	Total Expenditures	172,049	180,645	174,793

ᐱᑦᐳᑦᐳᑦᐳᑦ ᐳᑦᐳᑦᐳᑦ
POLICY AND PLANNING

	2002-2003 ᐳᑦᐳᑦᐳᑦ ᐱᑦᐳᑦᐳᑦ Main Estimates (\$000)	2001-2002 ᐳᑦᐳᑦᐳᑦᐳᑦ ᐳᑦᐳᑦᐳᑦ Revised Estimates (\$000)	2001-2002 ᐳᑦᐳᑦᐳᑦ ᐳᑦᐳᑦᐳᑦ Main Estimates (\$000)
ᐳᑦᐳᑦᐳᑦ ᐳᑦᐳᑦᐳᑦ Grants and Contributions			
ᐳᑦᐳᑦᐳᑦ Contributions			
ᐳᑦᐳᑦᐳᑦᐳᑦ ᐳᑦᐳᑦᐳᑦᐳᑦ ᐳᑦᐳᑦᐳᑦᐳᑦ ᐳᑦᐳᑦᐳᑦᐳᑦ ᐳᑦᐳᑦᐳᑦᐳᑦ ᐳᑦᐳᑦᐳᑦᐳᑦ.	352	352	413
Library Services Supports library operations in each region.			
ᐳᑦᐳᑦᐳᑦ ᐳᑦᐳᑦᐳᑦ Total Contributions	352	352	413
ᐳᑦᐳᑦᐳᑦ ᐳᑦᐳᑦᐳᑦ ᐳᑦᐳᑦᐳᑦ Total Grants and Contributions	352	352	413

ᐃᑦᓂᐳᑦᓂᐳᑦᓂᐳᑦ ᓂᐳᑦᓂᐳᑦᓂᐳᑦ ᐃᑦᓂᐳᑦᓂᐳᑦᓂᐳᑦ ᐃᑦᓂᐳᑦᓂᐳᑦᓂᐳᑦ
ADULT EDUCATION AND POST SECONDARY SERVICES

	2002-2003 ᓂᐳᑦᓂᐳᑦᓂᐳᑦ ᐃᑦᓂᐳᑦᓂᐳᑦᓂᐳᑦ Main Estimates (\$000)	2001-2002 ᐃᑦᓂᐳᑦᓂᐳᑦᓂᐳᑦ ᐃᑦᓂᐳᑦᓂᐳᑦᓂᐳᑦ Revised Estimates (\$000)	2001-2002 ᓂᐳᑦᓂᐳᑦᓂᐳᑦ ᐃᑦᓂᐳᑦᓂᐳᑦᓂᐳᑦ Main Estimates (\$000)
ᓂᐳᑦᓂᐳᑦᓂᐳᑦ ᐃᑦᓂᐳᑦᓂᐳᑦ Grants and Contributions			
ᓂᐳᑦᓂᐳᑦᓂᐳᑦ Grants			
ᐃᑦᓂᐳᑦᓂᐳᑦᓂᐳᑦᓂᐳᑦ ᓂᐳᑦᓂᐳᑦᓂᐳᑦ ᐃᑦᓂᐳᑦᓂᐳᑦᓂᐳᑦ ᓂᐳᑦᓂᐳᑦᓂᐳᑦ ᓂᐳᑦᓂᐳᑦᓂᐳᑦ ᐃᑦᓂᐳᑦᓂᐳᑦᓂᐳᑦ ᐃᑦᓂᐳᑦᓂᐳᑦᓂᐳᑦ ᓂᐳᑦᓂᐳᑦᓂᐳᑦ ᐃᑦᓂᐳᑦᓂᐳᑦᓂᐳᑦ	3,642	3,142	3,142
Student Financial Assistance Grants made to individuals supporting their attendance at Post Secondary Institutions.			
ᓂᐳᑦᓂᐳᑦᓂᐳᑦ ᓂᐳᑦᓂᐳᑦᓂᐳᑦ Total Grants	3,642	3,142	3,142
ᐃᑦᓂᐳᑦᓂᐳᑦᓂᐳᑦ Contributions			
ᓂᐳᑦᓂᐳᑦᓂᐳᑦᓂᐳᑦ ᐃᑦᓂᐳᑦᓂᐳᑦᓂᐳᑦ ᐃᑦᓂᐳᑦᓂᐳᑦᓂᐳᑦᓂᐳᑦ ᓂᐳᑦᓂᐳᑦᓂᐳᑦᓂᐳᑦ ᐃᑦᓂᐳᑦᓂᐳᑦᓂᐳᑦ ᐃᑦᓂᐳᑦᓂᐳᑦᓂᐳᑦᓂᐳᑦ ᐃᑦᓂᐳᑦᓂᐳᑦᓂᐳᑦ ᐃᑦᓂᐳᑦᓂᐳᑦᓂᐳᑦ ᐃᑦᓂᐳᑦᓂᐳᑦᓂᐳᑦᓂᐳᑦ	14,318	14,239	13,654
College Contributions Supports Nunavut Arctic College. Provides for operations and maintenance costs at the community and regional level.			
ᐃᑦᓂᐳᑦᓂᐳᑦᓂᐳᑦᓂᐳᑦ ᐃᑦᓂᐳᑦᓂᐳᑦᓂᐳᑦ ᐃᑦᓂᐳᑦᓂᐳᑦᓂᐳᑦᓂᐳᑦ ᓂᐳᑦᓂᐳᑦᓂᐳᑦᓂᐳᑦ ᐃᑦᓂᐳᑦᓂᐳᑦᓂᐳᑦ ᐃᑦᓂᐳᑦᓂᐳᑦᓂᐳᑦᓂᐳᑦ ᐃᑦᓂᐳᑦᓂᐳᑦᓂᐳᑦ ᐃᑦᓂᐳᑦᓂᐳᑦᓂᐳᑦ ᐃᑦᓂᐳᑦᓂᐳᑦᓂᐳᑦᓂᐳᑦ	-	230	-
AWG Support One-time funding to Nunavut Arctic College to offset costs incurred in support of the Arctic Winter Games.			

ᐃᑦᓂᐳᑦ ᐃᑦᓂᐳᑦᐳᑦ ᓂᐳᑦᐳᑦᐳᑦ ᐃᑦᓂᐳᑦᐳᑦ ᐳᑦᐳᑦᐳᑦ
ADULT EDUCATION AND POST SECONDARY SERVICES

	2002-2003 ᐳᑦᐳᑦᐳᑦ ᐳᑦᐳᑦᐳᑦ Main Estimates (\$000)	2001-2002 ᐳᑦᐳᑦᐳᑦᐳᑦ ᐳᑦᐳᑦᐳᑦ Revised Estimates (\$000)	2001-2002 ᐳᑦᐳᑦᐳᑦ ᐳᑦᐳᑦᐳᑦ Main Estimates (\$000)
ᐳᑦᐳᑦᐳᑦ ᐳᑦᐳᑦᐳᑦ ᐳᑦᐳᑦᐳᑦ Grants and Contributions			
ᐳᑦᐳᑦᐳᑦ (ᐳᑦᐳᑦᐳᑦ) Contributions (cont'd)			
ᐳᑦᐳᑦᐳᑦᐳᑦᐳᑦ ᐳᑦᐳᑦᐳᑦᐳᑦᐳᑦ ᐳᑦᐳᑦᐳᑦᐳᑦᐳᑦᐳᑦ ᐳᑦᐳᑦᐳᑦᐳᑦᐳᑦ ᐳᑦᐳᑦᐳᑦᐳᑦᐳᑦ ᐳᑦᐳᑦᐳᑦᐳᑦᐳᑦᐳᑦ ᐳᑦᐳᑦᐳᑦᐳᑦᐳᑦᐳᑦ	150	150	150
Literacy Program Funding to Nunavut Arctic College to deliver literacy programs.			
ᐳᑦᐳᑦᐳᑦᐳᑦᐳᑦ ᐳᑦᐳᑦᐳᑦᐳᑦ ᐳᑦᐳᑦᐳᑦᐳᑦᐳᑦᐳᑦ ᐳᑦᐳᑦᐳᑦᐳᑦᐳᑦᐳᑦ ᐳᑦᐳᑦᐳᑦᐳᑦᐳᑦᐳᑦ ᐳᑦᐳᑦᐳᑦᐳᑦᐳᑦᐳᑦᐳᑦ	299	585	673
Trades Program Provides funding for trades program development and delivery.			
ᐳᑦᐳᑦᐳᑦ ᐳᑦᐳᑦᐳᑦ Total Contributions	14,767	15,204	14,477
ᐳᑦᐳᑦᐳᑦ ᐳᑦᐳᑦᐳᑦ ᐳᑦᐳᑦᐳᑦ Total Grants and Contributions	18,409	18,346	17,619

ᐃᑦᓂᐳᑦᓂᐳᑦᓂᐳᑦ ᐱᑦᑦᑦᑦᑦ
SCHOOL SERVICES

	2002-2003 ᑦᓂᐳᑦᓂᐳᑦ ᐃᑦᓂᐳᑦᓂᐳᑦ Main Estimates (\$000)	2001-2002 ᐃᑦᓂᐳᑦᓂᐳᑦ ᐃᑦᓂᐳᑦᓂᐳᑦ Revised Estimates (\$000)	2001-2002 ᑦᓂᐳᑦᓂᐳᑦ ᐃᑦᓂᐳᑦᓂᐳᑦ Main Estimates (\$000)
ᑦᓂᐳᑦᓂᐳᑦ ᐃᑦᓂᐳᑦᓂᐳᑦ Grants and Contributions			
ᐃᑦᓂᐳᑦᓂᐳᑦ (ᑦᓂᐳᑦᓂᐳᑦ) Contributions (cont'd)			
ᐃᑦᓂᐳᑦᓂᐳᑦ ᐃᑦᓂᐳᑦᓂᐳᑦ ᐃᑦᓂᐳᑦᓂᐳᑦ ᐃᑦᓂᐳᑦᓂᐳᑦ ᐃᑦᓂᐳᑦᓂᐳᑦ ᐃᑦᓂᐳᑦᓂᐳᑦ ᐃᑦᓂᐳᑦᓂᐳᑦ ᐃᑦᓂᐳᑦᓂᐳᑦ ᐃᑦᓂᐳᑦᓂᐳᑦ			
Teacher Education Strategy	1,995	1,995	1,995
Provides support for ongoing teacher education program delivery. Funding for teacher certification for nunavummiut.			
ᐃᑦᓂᐳᑦᓂᐳᑦ ᐃᑦᓂᐳᑦᓂᐳᑦ ᐃᑦᓂᐳᑦᓂᐳᑦ ᐃᑦᓂᐳᑦᓂᐳᑦ ᐃᑦᓂᐳᑦᓂᐳᑦ ᐃᑦᓂᐳᑦᓂᐳᑦ ᐃᑦᓂᐳᑦᓂᐳᑦ ᐃᑦᓂᐳᑦᓂᐳᑦ ᐃᑦᓂᐳᑦᓂᐳᑦ			
Teachers' Professional Development	1,517	1,517	1,517
Defined in the Federation of Nunavut Teachers Collective Agreement. Provides ongoing financial support for the professional development of teachers.			
ᑦᓂᐳᑦᓂᐳᑦ ᐃᑦᓂᐳᑦᓂᐳᑦ Total Contributions	3,512	3,512	3,512
ᑦᓂᐳᑦᓂᐳᑦ ᐃᑦᓂᐳᑦᓂᐳᑦ Total Grants and Contributions	3,512	3,512	3,512

ᐃᑦᓂᓐᓂᓐ ᐃᑦᓂᓐᓂᓐ ᐃᑦᓂᓐᓂᓐ ᐃᑦᓂᓐᓂᓐ
DETAIL OF WORK PERFORMED ON BEHALF OF THIRD PARTIES

	2002-2003 ᐃᑦᓂᓐᓂᓐ ᐃᑦᓂᓐᓂᓐ Main Estimates (\$000)	2001-2002 ᐃᑦᓂᓐᓂᓐ ᐃᑦᓂᓐᓂᓐ Revised Estimates (\$000)	2001-2002 ᐃᑦᓂᓐᓂᓐ ᐃᑦᓂᓐᓂᓐ Main Estimates (\$000)
ᐃᑦᓂᓐᓂᓐ ᐃᑦᓂᓐᓂᓐ ᐃᑦᓂᓐᓂᓐ ᐃᑦᓂᓐᓂᓐ			
ᐃᑦᓂᓐᓂᓐ ᐃᑦᓂᓐᓂᓐ ᐃᑦᓂᓐᓂᓐ ᐃᑦᓂᓐᓂᓐ ᐃᑦᓂᓐᓂᓐ ᐃᑦᓂᓐᓂᓐ ᐃᑦᓂᓐᓂᓐ ᐃᑦᓂᓐᓂᓐ ᐃᑦᓂᓐᓂᓐ ᐃᑦᓂᓐᓂᓐ ᐃᑦᓂᓐᓂᓐ ᐃᑦᓂᓐᓂᓐ ᐃᑦᓂᓐᓂᓐ ᐃᑦᓂᓐᓂᓐ ᐃᑦᓂᓐᓂᓐ ᐃᑦᓂᓐᓂᓐ			
	2,856	3,545	3,277
Labour Market Development Agreement Partnership between Government of Canada and Government of Nunavut to meet the challenges of labour force development in Nunavut necessary as a result of overall changes in Canada's economic structure and labour skill requirements in the face of new technologies and global trade advancement.			
ᐃᑦᓂᓐᓂᓐ ᐃᑦᓂᓐᓂᓐ ᐃᑦᓂᓐᓂᓐ ᐃᑦᓂᓐᓂᓐ			
ᐃᑦᓂᓐᓂᓐ ᐃᑦᓂᓐᓂᓐ ᐃᑦᓂᓐᓂᓐ ᐃᑦᓂᓐᓂᓐ ᐃᑦᓂᓐᓂᓐ ᐃᑦᓂᓐᓂᓐ ᐃᑦᓂᓐᓂᓐ ᐃᑦᓂᓐᓂᓐ ᐃᑦᓂᓐᓂᓐ ᐃᑦᓂᓐᓂᓐ ᐃᑦᓂᓐᓂᓐ ᐃᑦᓂᓐᓂᓐ ᐃᑦᓂᓐᓂᓐ ᐃᑦᓂᓐᓂᓐ ᐃᑦᓂᓐᓂᓐ ᐃᑦᓂᓐᓂᓐ			
	10	25	10
Bank of Montreal Scholarship Program Partnership between Bank of Montreal and Government of Nunavut to support the education of youth in Nunavut. Scholarships granted to students enrolled in career, academic and trades programs as well as to graduating high school students attending a post-secondary institution. Monies awarded on basis of academic achievement.			
ᐃᑦᓂᓐᓂᓐ ᐃᑦᓂᓐᓂᓐ ᐃᑦᓂᓐᓂᓐ ᐃᑦᓂᓐᓂᓐ			
ᐃᑦᓂᓐᓂᓐ ᐃᑦᓂᓐᓂᓐ ᐃᑦᓂᓐᓂᓐ ᐃᑦᓂᓐᓂᓐ ᐃᑦᓂᓐᓂᓐ ᐃᑦᓂᓐᓂᓐ ᐃᑦᓂᓐᓂᓐ ᐃᑦᓂᓐᓂᓐ ᐃᑦᓂᓐᓂᓐ ᐃᑦᓂᓐᓂᓐ ᐃᑦᓂᓐᓂᓐ ᐃᑦᓂᓐᓂᓐ ᐃᑦᓂᓐᓂᓐ ᐃᑦᓂᓐᓂᓐ ᐃᑦᓂᓐᓂᓐ ᐃᑦᓂᓐᓂᓐ			
	249	246	226
Canadian Millennium Scholarship Foundation Partnership between the Foundation and Government of Nunavut to grant scholarships to full-time students attending institutions recognized by the Canada Student Loans Program. Objective is to maintain access to education for students with financial need.			

ᐱᑦᓂᐳᑦᓂᐳᑦᓂᐳᑦ ᐱᑦᓂᐳᑦᓂᐳᑦᓂᐳᑦ ᐱᑦᓂᐳᑦᓂᐳᑦᓂᐳᑦ
DETAIL OF WORK PERFORMED ON BEHALF OF THIRD PARTIES

	2002-2003 ᐱᑦᓂᐳᑦᓂᐳᑦᓂᐳᑦ ᐱᑦᓂᐳᑦᓂᐳᑦᓂᐳᑦ Main Estimates (\$000)	2001-2002 ᐱᑦᓂᐳᑦᓂᐳᑦᓂᐳᑦ ᐱᑦᓂᐳᑦᓂᐳᑦᓂᐳᑦ Revised Estimates (\$000)	2001-2002 ᐱᑦᓂᐳᑦᓂᐳᑦᓂᐳᑦ ᐱᑦᓂᐳᑦᓂᐳᑦᓂᐳᑦ Main Estimates (\$000)
ᐱᑦᓂᐳᑦᓂᐳᑦᓂᐳᑦ ᐱᑦᓂᐳᑦᓂᐳᑦᓂᐳᑦ ᐱᑦᓂᐳᑦᓂᐳᑦᓂᐳᑦ ᐱᑦᓂᐳᑦᓂᐳᑦᓂᐳᑦ ᐱᑦᓂᐳᑦᓂᐳᑦᓂᐳᑦ ᐱᑦᓂᐳᑦᓂᐳᑦᓂᐳᑦ ᐱᑦᓂᐳᑦᓂᐳᑦᓂᐳᑦ ᐱᑦᓂᐳᑦᓂᐳᑦᓂᐳᑦ ᐱᑦᓂᐳᑦᓂᐳᑦᓂᐳᑦ ᐱᑦᓂᐳᑦᓂᐳᑦᓂᐳᑦ ᐱᑦᓂᐳᑦᓂᐳᑦᓂᐳᑦ ᐱᑦᓂᐳᑦᓂᐳᑦᓂᐳᑦ ᐱᑦᓂᐳᑦᓂᐳᑦᓂᐳᑦ ᐱᑦᓂᐳᑦᓂᐳᑦᓂᐳᑦ	-	11	-
Grassroots Program Partnership between Government of Canada and Government of Nunavut to support the creation and development of on-line collaborative projects by Nunavut students and teachers.			
ᐱᑦᓂᐳᑦᓂᐳᑦᓂᐳᑦ ᐱᑦᓂᐳᑦᓂᐳᑦᓂᐳᑦ ᐱᑦᓂᐳᑦᓂᐳᑦᓂᐳᑦ ᐱᑦᓂᐳᑦᓂᐳᑦᓂᐳᑦ ᐱᑦᓂᐳᑦᓂᐳᑦᓂᐳᑦ ᐱᑦᓂᐳᑦᓂᐳᑦᓂᐳᑦ ᐱᑦᓂᐳᑦᓂᐳᑦᓂᐳᑦ ᐱᑦᓂᐳᑦᓂᐳᑦᓂᐳᑦ ᐱᑦᓂᐳᑦᓂᐳᑦᓂᐳᑦ ᐱᑦᓂᐳᑦᓂᐳᑦᓂᐳᑦ ᐱᑦᓂᐳᑦᓂᐳᑦᓂᐳᑦ ᐱᑦᓂᐳᑦᓂᐳᑦᓂᐳᑦ ᐱᑦᓂᐳᑦᓂᐳᑦᓂᐳᑦ ᐱᑦᓂᐳᑦᓂᐳᑦᓂᐳᑦ ᐱᑦᓂᐳᑦᓂᐳᑦᓂᐳᑦ	-	456	-
Gates Foundation Public Libraries Program Partnership between Bill and Melinda Gates Foundation and Government of Nunavut to provide computer hardware, software and training for public libraries serving low-income communities in Nunavut.			
ᐱᑦᓂᐳᑦᓂᐳᑦᓂᐳᑦ ᐱᑦᓂᐳᑦᓂᐳᑦᓂᐳᑦ ᐱᑦᓂᐳᑦᓂᐳᑦᓂᐳᑦ ᐱᑦᓂᐳᑦᓂᐳᑦᓂᐳᑦ ᐱᑦᓂᐳᑦᓂᐳᑦᓂᐳᑦ ᐱᑦᓂᐳᑦᓂᐳᑦᓂᐳᑦ ᐱᑦᓂᐳᑦᓂᐳᑦᓂᐳᑦ ᐱᑦᓂᐳᑦᓂᐳᑦᓂᐳᑦ ᐱᑦᓂᐳᑦᓂᐳᑦᓂᐳᑦ ᐱᑦᓂᐳᑦᓂᐳᑦᓂᐳᑦ ᐱᑦᓂᐳᑦᓂᐳᑦᓂᐳᑦ ᐱᑦᓂᐳᑦᓂᐳᑦᓂᐳᑦ ᐱᑦᓂᐳᑦᓂᐳᑦᓂᐳᑦ ᐱᑦᓂᐳᑦᓂᐳᑦᓂᐳᑦ ᐱᑦᓂᐳᑦᓂᐳᑦᓂᐳᑦ	-	279	-
University College Entrance Program Partnership between Government of Canada and Government of Nunavut to provide support to secondary school graduates in their preparation for further post-secondary education programs.			

ᐃᐳᑦᓂᐳᑦᓂᐳᑦᓂᐳᑦ ᐃᐳᑦᓂᐳᑦᓂᐳᑦᓂᐳᑦ ᐃᐳᑦᓂᐳᑦᓂᐳᑦᓂᐳᑦ ᐃᐳᑦᓂᐳᑦᓂᐳᑦ
DISTRIBUTION OF OPERATIONS AND MAINTENANCE BUDGET

	ᐃᐳᑦᓂᐳᑦᓂᐳᑦᓂᐳᑦ Headquarters (\$000)	ᐃᐳᑦᓂᐳᑦᓂᐳᑦᓂᐳᑦ Qikiqtaaluk (\$000)	ᐃᐳᑦᓂᐳᑦᓂᐳᑦᓂᐳᑦ Kivalliq (\$000)	ᐃᐳᑦᓂᐳᑦᓂᐳᑦᓂᐳᑦ Kitikmeot (\$000)
ᐃᐳᑦᓂᐳᑦᓂᐳᑦᓂᐳᑦ ᐃᐳᑦᓂᐳᑦᓂᐳᑦ ᐃᐳᑦᓂᐳᑦᓂᐳᑦ Compensation and Benefits	7,294	35,704	18,775	12,696
ᐃᐳᑦᓂᐳᑦᓂᐳᑦᓂᐳᑦ ᐃᐳᑦᓂᐳᑦᓂᐳᑦ Grants and Contributions	21,921	6,109	5,094	1,845
ᐃᐳᑦᓂᐳᑦᓂᐳᑦᓂᐳᑦ ᐃᐳᑦᓂᐳᑦᓂᐳᑦ ᐃᐳᑦᓂᐳᑦᓂᐳᑦ Travel and Transportation	961	750	965	759
ᐃᐳᑦᓂᐳᑦᓂᐳᑦᓂᐳᑦ ᐃᐳᑦᓂᐳᑦᓂᐳᑦ Materials and Supplies	540	67	50	118
ᐃᐳᑦᓂᐳᑦᓂᐳᑦᓂᐳᑦ ᐃᐳᑦᓂᐳᑦᓂᐳᑦ Purchased Services	427	515	57	103
ᐃᐳᑦᓂᐳᑦᓂᐳᑦᓂᐳᑦ Utilities	-	3,699	1,952	1,892
ᐃᐳᑦᓂᐳᑦᓂᐳᑦᓂᐳᑦ ᐃᐳᑦᓂᐳᑦᓂᐳᑦ Contract Services	1,130	2,524	917	1,209
ᐃᐳᑦᓂᐳᑦᓂᐳᑦᓂᐳᑦ ᐃᐳᑦᓂᐳᑦᓂᐳᑦ Fees and Payments	1,039	12,985	5,396	4,238
ᐃᐳᑦᓂᐳᑦᓂᐳᑦᓂᐳᑦ ᐃᐳᑦᓂᐳᑦᓂᐳᑦ Other Expenses	494	114	21	189
ᐃᐳᑦᓂᐳᑦᓂᐳᑦᓂᐳᑦ ᐃᐳᑦᓂᐳᑦᓂᐳᑦᓂᐳᑦ Total Operations & Maintenance	33,806	62,467	33,227	23,049

