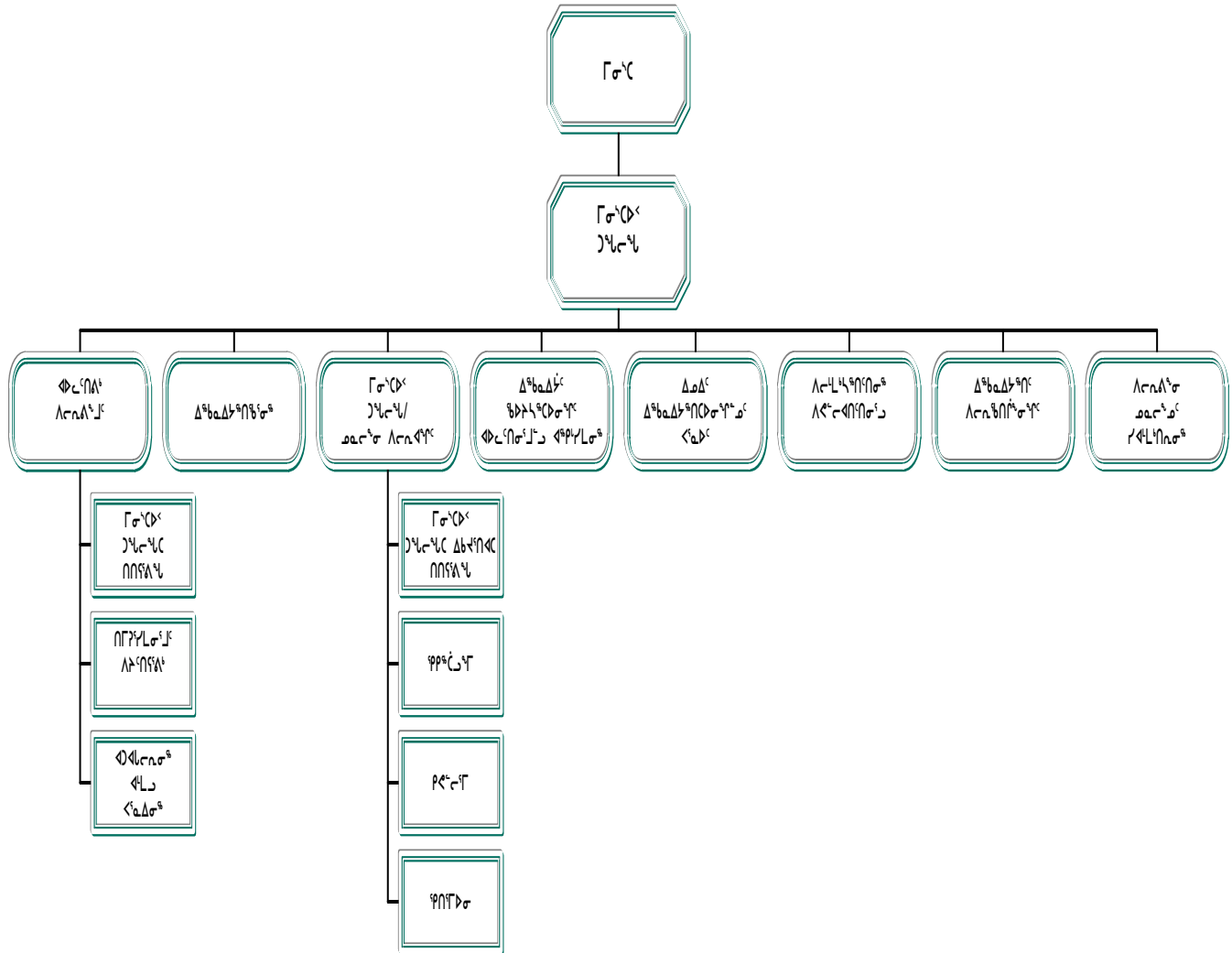


ᐱᑲ ᐃᑲᐃᑦᑎᑦ
 ᑲᐃᑦ

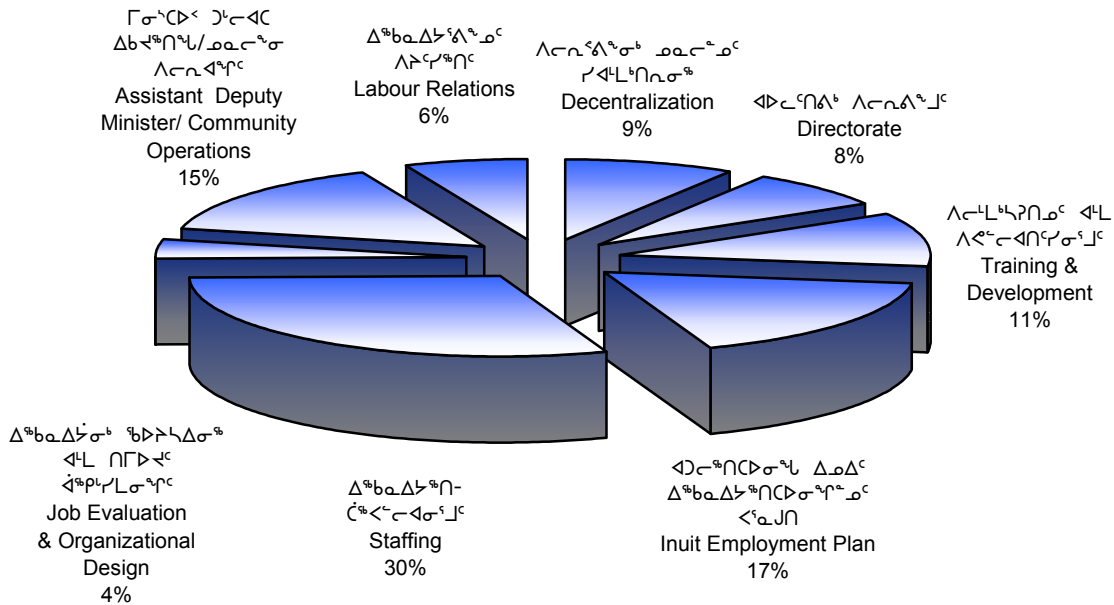
ᑲᐱᑦ ᑦᑲᐃ
 ᑲᐃᑦᑎᑦᑎᑦᑎᑦ ᑲᐃᑦᑎᑦ

ᑲᐱᑦ ᑲᐱᑦ
 ᑲᐃᑦᑎᑦᑎᑦᑎᑦ ᑲᐃᑦᑎᑦ

ᐃᑲᐃᑦᑎᑦᑎᑦᑎᑦ ᐱᑲᐃᑦᑎᑦᑎᑦ



ᐃᖅᑲᐱᐃᔭᖅᑎᓕᓪᓰ ᐱᓕᓂᐱᖅᓰ
DETAIL OF EXPENDITURES



ᑎᓂᓪᓰᐱᓂᓪᓰ	DESCRIPTION	2002-2003	2001-2002	2001-2002
		ᑎᓂᓪᓰᐱᓂᓪᓰ ᐱᓂᓪᓰᑎᓪᓰ	ᐱᓂᓪᓰᑎᓪᓰ ᐱᓂᓪᓰᑎᓪᓰ	ᑎᓂᓪᓰᐱᓂᓪᓰ ᐱᓂᓪᓰᑎᓪᓰ
		Main Estimates (\$000)	Revised Estimates (\$000)	Main Estimates (\$000)
ᐃᖅᑲᐱᐃᔭᖅᑎᓪᓰ ᐱᓕᓂᐱᖅᓰ ᐱᓂᓪᓰᑎᓪᓰ	Compensation and Benefits	7,431	5,769	5,669
ᑎᓂᓪᓰᐱᓂᓪᓰ ᐱᓂᓪᓰᑎᓪᓰ	Grants and Contributions	350	675	500
ᓂᓂᓪᓰᑎᓪᓰ ᐱᓂᓪᓰᑎᓪᓰ	Travel and Transportation	3,187	2,640	2,640
ᐱᓂᓪᓰᑎᓪᓰ ᐱᓂᓪᓰᑎᓪᓰ	Materials and Supplies	392	285	285
ᓂᓂᓪᓰᑎᓪᓰ ᐱᓂᓪᓰᑎᓪᓰ	Purchased Services	4,346	6,045	6,045
ᐱᓂᓪᓰᑎᓪᓰ	Utilities	-	-	-
ᐱᓂᓪᓰᑎᓪᓰ ᐱᓂᓪᓰᑎᓪᓰ	Contract Services	3,147	2,183	2,183
ᐱᓂᓪᓰᑎᓪᓰ ᐱᓂᓪᓰᑎᓪᓰ	Fees and Payments	718	874	874
ᐱᓂᓪᓰᑎᓪᓰ ᐱᓂᓪᓰᑎᓪᓰ	Other Expenses	387	302	302
ᑎᓂᓪᓰᐱᓂᓪᓰ ᐱᓂᓪᓰᑎᓪᓰ ᐱᓂᓪᓰᑎᓪᓰ	Total Operations & Maintenance	19,958	18,773	18,498
ᑎᓂᓪᓰᐱᓂᓪᓰ ᐱᓂᓪᓰᑎᓪᓰ	Total Capital	-	-	-
ᑎᓂᓪᓰᐱᓂᓪᓰ ᐱᓂᓪᓰᑎᓪᓰ	Total Expenditures	19,958	18,773	18,498

ᐃᑲᑦᑎᐱ ᑎᐱ ᑎᐱᑦᑕᑎᐱᑦᑕ ᑎᐱᑦᑕᑎᐱᑦᑕ/ᓄᓄᑦᑎᐱᑦᑕ ᐱᐱᑦᑕᑎᐱᑦᑕ

ᑕᓄᓄ ᐱᑦᑎᐱᑦᑕᑎᐱᑦᑕ ᑲᐱᑎᐱᑦᑕᑎᐱᑦᑕᑎᐱᑦᑕ ᓄᓄᑦᑎᐱᑦᑕ ᐱᐱᑦᑕᑎᐱᑦᑕ ᑎᐱᑦᑕᑎᐱᑦᑕ, ᑎᐱᑦᑕᑎᐱᑦᑕ ᐱᐱᑦᑕᑎᐱᑦᑕ ᑎᐱᑦᑕᑎᐱᑦᑕ. ᓄᓄᑦᑎᐱᑦᑕ ᐱᐱᑦᑕᑎᐱᑦᑕ ᐱᑦᑎᐱᑦᑕᑎᐱᑦᑕ ᑎᐱᑦᑕᑎᐱᑦᑕ ᐱᐱᑦᑕᑎᐱᑦᑕ ᐱᐱᑦᑕᑎᐱᑦᑕ ᐱᐱᑦᑕᑎᐱᑦᑕ ᐱᐱᑦᑕᑎᐱᑦᑕ ᐱᐱᑦᑕᑎᐱᑦᑕ ᐱᐱᑦᑕᑎᐱᑦᑕ.

ASSISTANT DEPUTY MINISTER/COMMUNITY OPERATIONS

This Branch oversees the community operations in the Qikiqtaaluk, Kivalliq and Kitikmeot regions. Community Operations also act as advisors to management on a full range of human resource issues.

ᑎᐱᑦᑕᑎᐱᑦᑕ	DESCRIPTION	2002-2003	2001-2002	2001-2002
		ᑎᐱᑦᑕᑎᐱᑦᑕ ᐱᐱᑦᑕᑎᐱᑦᑕ	ᐱᐱᑦᑕᑎᐱᑦᑕ ᐱᐱᑦᑕᑎᐱᑦᑕ	ᑎᐱᑦᑕᑎᐱᑦᑕ ᐱᐱᑦᑕᑎᐱᑦᑕ
		Main Estimates (\$000)	Revised Estimates (\$000)	Main Estimates (\$000)
ᐃᖅᑲᓄᐃᑦᖅᑎᐱᑦᑕ ᐱᑎᑦᑎᐱᑦᑕ ᐃᑲᑦᑎᐱᑦᑕ	Compensation and Benefits	1,754	1,539	1,446
ᑎᐱᑦᑕᑎᐱᑦᑕ ᐱᐱᑦᑕᑎᐱᑦᑕ	Grants and Contributions	-	-	-
ᓄᓄᑎᐱᑦᑕᑎᐱᑦᑕ ᐱᐱᑦᑕᑎᐱᑦᑕ	Travel and Transportation	283	294	294
ᐱᑦᑎᐱᑦᑕᑎᐱᑦᑕ ᑎᐱᑦᑕᑎᐱᑦᑕ	Materials and Supplies	82	71	71
ᓄᓄᐱᑦᑕᑎᐱᑦᑕ ᐱᐱᑦᑕᑎᐱᑦᑕ	Purchased Services	650	370	370
ᑎᐱᑦᑕᑎᐱᑦᑕ	Utilities	-	-	-
ᑎᐱᑦᑕᑎᐱᑦᑕ ᐱᐱᑦᑕᑎᐱᑦᑕ	Contract Services	90	45	45
ᐱᑎᑦᑎᐱᑦᑕ ᐱᑎᑦᑎᐱᑦᑕ	Fees and Payments	55	36	36
ᐱᑎᑦᑎᐱᑦᑕ ᐱᑎᑦᑎᐱᑦᑕ	Other Expenses	90	80	80
ᑎᐱᑦᑕᑎᐱᑦᑕ ᐱᐱᑦᑕᑎᐱᑦᑕ ᐱᐱᑦᑕᑎᐱᑦᑕ	Total Operations & Maintenance	3,004	2,435	2,342
ᑎᐱᑦᑕᑎᐱᑦᑕ ᐱᐱᑦᑕᑎᐱᑦᑕ	Total Capital	-	-	-
ᑎᐱᑦᑕᑎᐱᑦᑕ ᐱᑎᑦᑎᐱᑦᑕ	Total Expenditures	3,004	2,435	2,342



