

ԼԵԵԿԻՍԼԱԾԻ ՈՌԳԱՆ



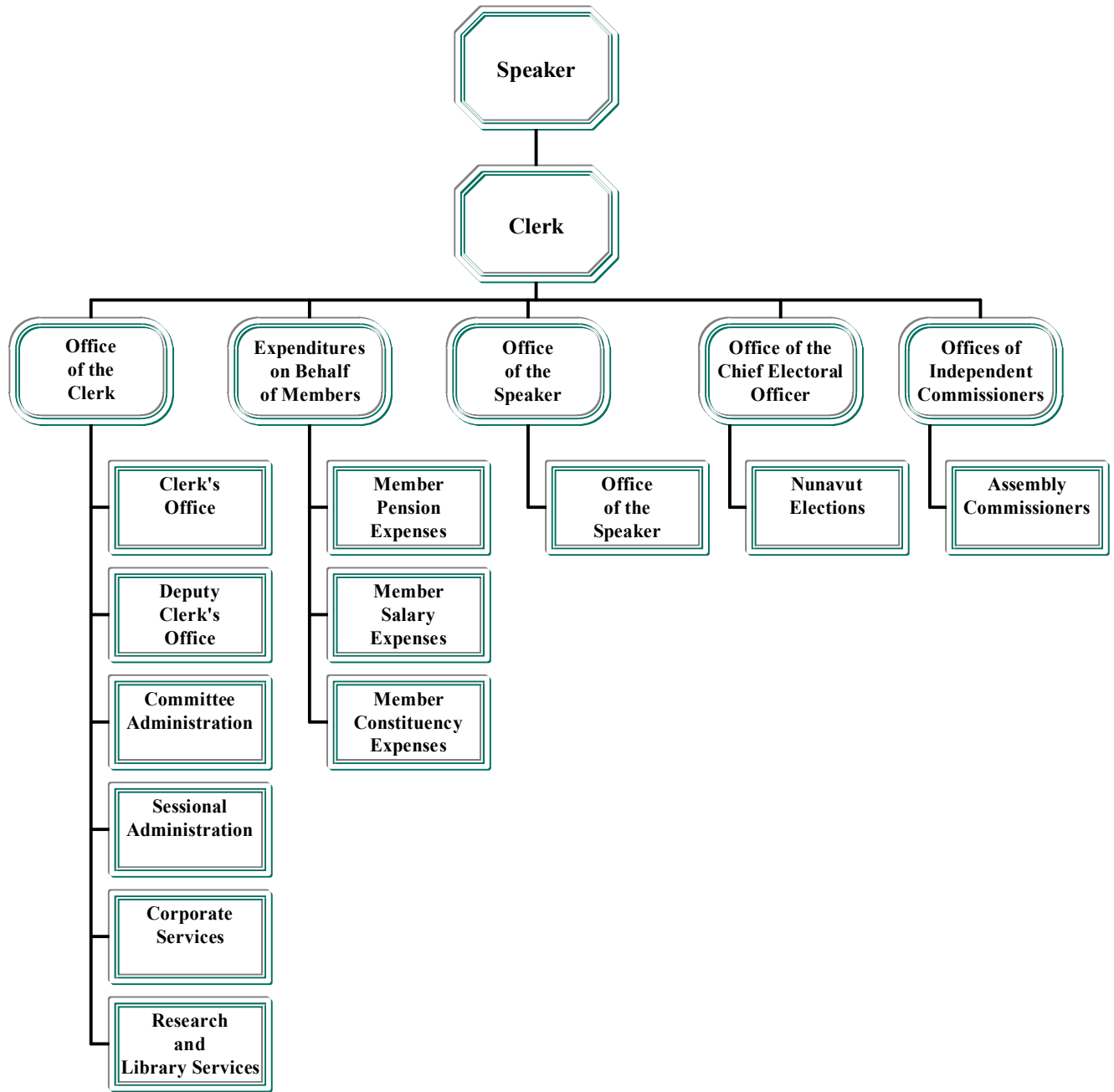
OFFICE OF THE  
LEGISLATIVE ASSEMBLY



Kevin O'Brien  
Speaker of the Legislative Assembly

John Quirke  
Clerk of the Legislative Assembly

## ACCOUNTING STRUCTURE CHART





## MISSION

---

Consistent with the Bathurst Mandate, the governance traditions of Northern Canada and established principles of parliamentary democracy, the Office of the Legislative Assembly provides quality programs and services to create an environment in which elected Members can best fulfill their roles and responsibilities as representatives of the people of Nunavut.

## GOALS

---

- ◆ A functional legislative process.
- ◆ Empowered Members.
- ◆ An open and reflective institution.
- ◆ An Assembly that takes its place in Canada and the world.





Operating Expenses on Behalf of Members

This budget area provides for the cost of salary indemnities, constituency work expenses, and pension administration incurred on behalf of the Members of the Legislative Assembly. It also provides for the salaries of Members' constituency assistants and the costs of operating constituency offices in the communities.

EXPENDITURES ON BEHALF OF MEMBERS

This budget area provides for the cost of salary indemnities, constituency work expenses, and pension administration incurred on behalf of the Members of the Legislative Assembly. It also provides for the salaries of Members' constituency assistants and the costs of operating constituency offices in the communities.

		2002-2003 Main Estimates (\$000)	2001-2002 Revised Estimates (\$000)	2001-2002 Main Estimates (\$000)
Compensation and Benefits	Δ <sup>ε</sup> εΔ <sup>ε</sup> Δ <sup>ε</sup> Δ <sup>ε</sup> Δ <sup>ε</sup> Δ <sup>ε</sup> Δ <sup>ε</sup> Δ <sup>ε</sup>	2,543	2,524	2,459
Grants and Contributions	Δ <sup>ε</sup> Δ <sup>ε</sup> Δ <sup>ε</sup> Δ <sup>ε</sup> Δ <sup>ε</sup> Δ <sup>ε</sup> Δ <sup>ε</sup> Δ <sup>ε</sup>	-	-	-
Travel and Transportation	Δ <sup>ε</sup> Δ <sup>ε</sup> Δ <sup>ε</sup> Δ <sup>ε</sup> Δ <sup>ε</sup> Δ <sup>ε</sup> Δ <sup>ε</sup> Δ <sup>ε</sup>	290	250	250
Materials and Supplies	Δ <sup>ε</sup> Δ <sup>ε</sup> Δ <sup>ε</sup> Δ <sup>ε</sup> Δ <sup>ε</sup> Δ <sup>ε</sup> Δ <sup>ε</sup> Δ <sup>ε</sup>	-	-	-
Purchased Services	Δ <sup>ε</sup> Δ <sup>ε</sup> Δ <sup>ε</sup> Δ <sup>ε</sup> Δ <sup>ε</sup> Δ <sup>ε</sup> Δ <sup>ε</sup> Δ <sup>ε</sup>	-	-	-
Utilities	Δ <sup>ε</sup> Δ <sup>ε</sup> Δ <sup>ε</sup> Δ <sup>ε</sup> Δ <sup>ε</sup> Δ <sup>ε</sup> Δ <sup>ε</sup> Δ <sup>ε</sup>	-	-	-
Contract Services	Δ <sup>ε</sup> Δ <sup>ε</sup> Δ <sup>ε</sup> Δ <sup>ε</sup> Δ <sup>ε</sup> Δ <sup>ε</sup> Δ <sup>ε</sup> Δ <sup>ε</sup>	269	278	278
Fees and Payments	Δ <sup>ε</sup> Δ <sup>ε</sup> Δ <sup>ε</sup> Δ <sup>ε</sup> Δ <sup>ε</sup> Δ <sup>ε</sup> Δ <sup>ε</sup> Δ <sup>ε</sup>	3,150	300	300
Other Expenses	Δ <sup>ε</sup> Δ <sup>ε</sup> Δ <sup>ε</sup> Δ <sup>ε</sup> Δ <sup>ε</sup> Δ <sup>ε</sup> Δ <sup>ε</sup> Δ <sup>ε</sup>	600	547	547
<b>Total Operations &amp; Maintenance</b>		<b>6,852</b>	<b>3,899</b>	<b>3,834</b>
<b>Total Capital</b>		<b>-</b>	<b>-</b>	<b>-</b>
<b>Total Expenditures</b>		<b>6,852</b>	<b>3,899</b>	<b>3,834</b>













