

moZos3=4



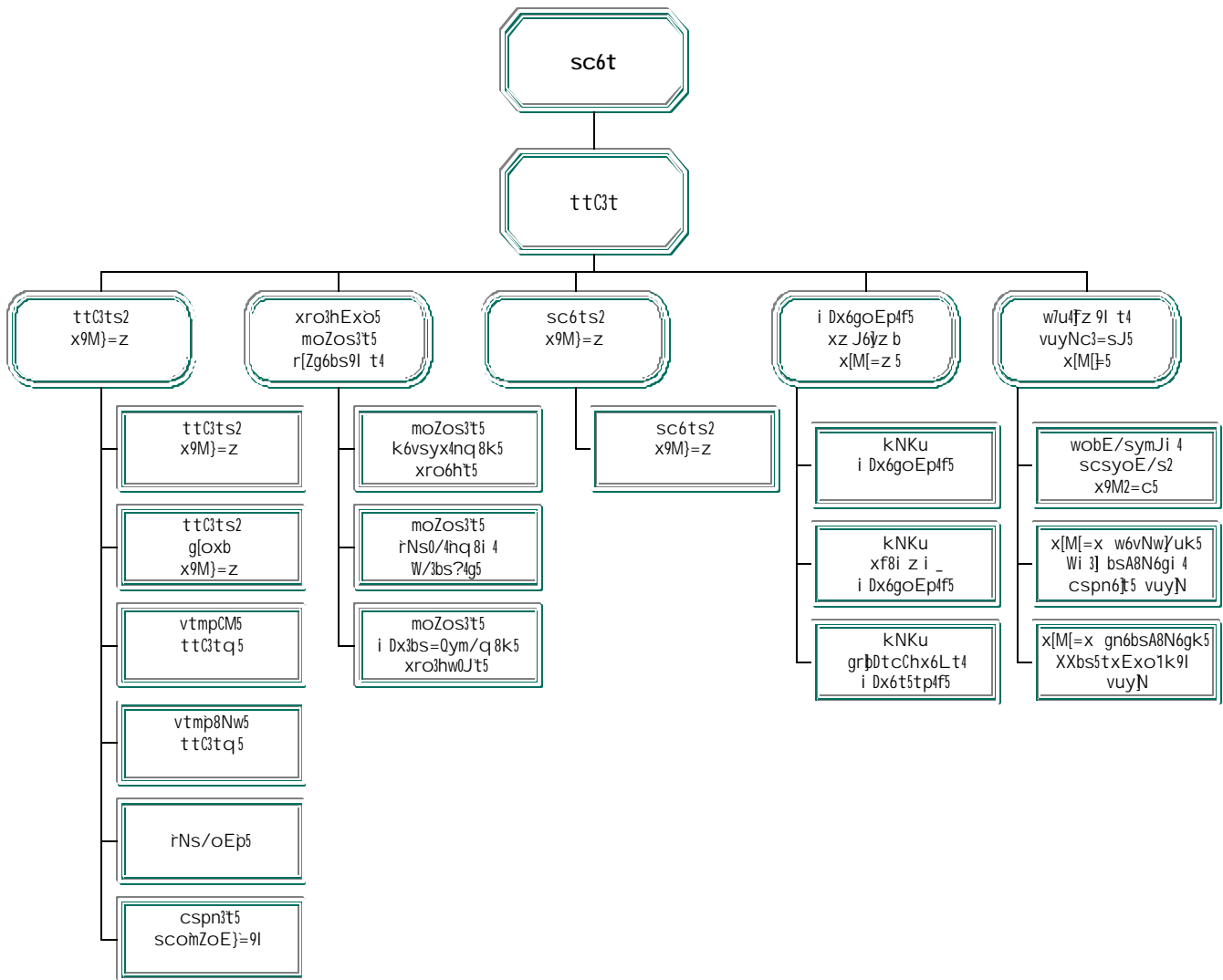
LEGISLATIVE  
ASSEMBLY

r=8 s'SCw/8  
sc6t moZos3=1j 5

/8 fx6  
ttC3t moZos3=7j 5

osN x[| v6  
ttC3ts2 g[ox moZos3=7j 5

rNs/oE0Jyqb NI Nw/3ymi q5

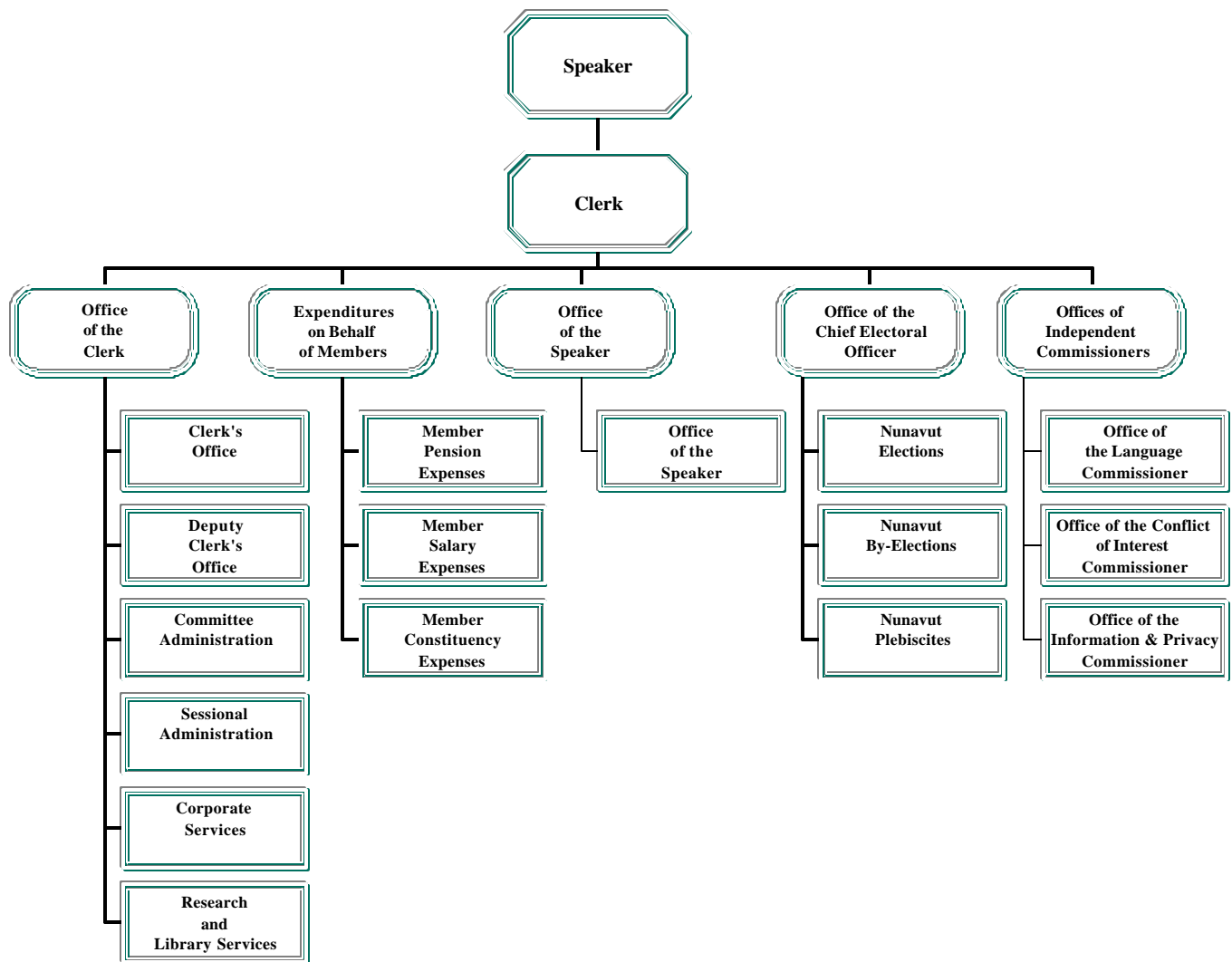


**Kevin O'Brien**  
Speaker of the Legislative Assembly

**John Quirke**  
Clerk of the Legislative Assembly

**Leona Aglukkaq**  
Deputy Clerk of the Legislative Assembly

## ACCOUNTING STRUCTURE CHART



## W/4noxaymJ5

mo4gQ5 ez s7u toy0JtsMs3g5, Z?m4f5 xg6X4S5 vNbs2 srs6b6gz b W6fygcq8i 4 x7m  
x6r5bsymJi 4 Z?mtA5 whm3hi 4f5 scsycD8N3=z tA5 grq8i 4, moZos3t4f5 x9M}=z 5 Wsi 3Xi 4  
WoExc3X4S5 Wp4yC3X5gt9I xvsi 3Xu5 moZos3t5 i Dx3bsymJ5 r[Z3gwA8N5yxd9I Q5 kNK5us5  
wkdtq8i 4 WoEx4nq5 vm0Qxoq8i 9I vJyt5yJ8Nd9I Q5.

## gCZ4n5

- ◆ xsMi c5yx3gu4 moZosDyc3X9I t4.
- ◆ MoZos6}5 hai 6nsod9I Q5
- ◆ mgwz 5yx6gu4 rsJ8N5yx3gul tudtcd9I Q5
- ◆ moZos3=4 wi 9M4ym5yx3I i vNbu yM3Jxul .

## MISSION

---

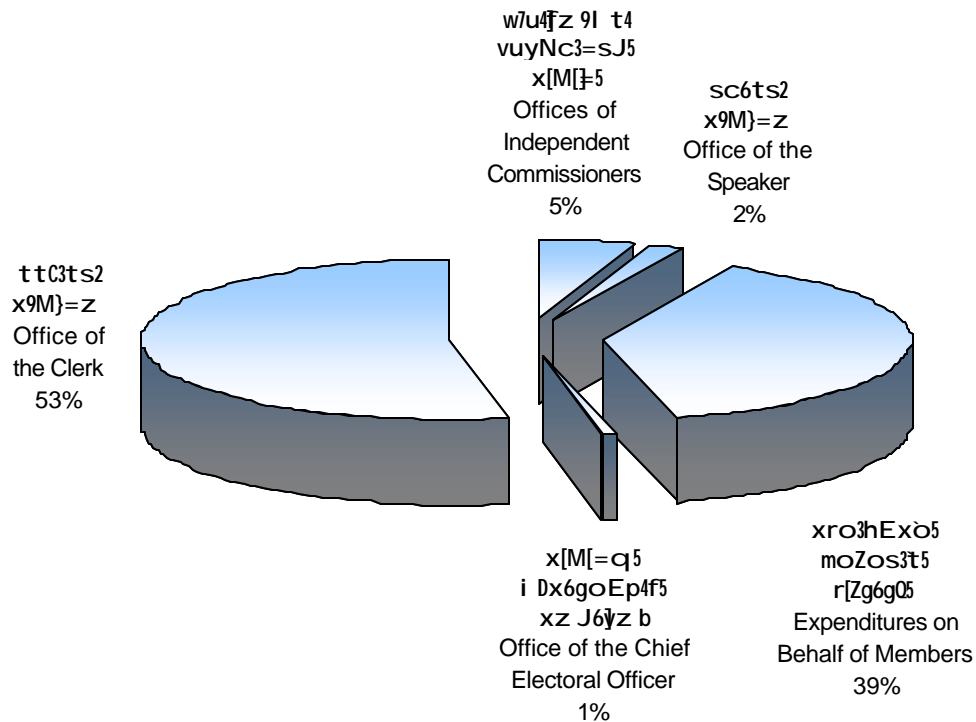
Consistent with the Bathurst Mandate, the governance traditions of Northern Canada and established principles of parliamentary democracy, the Office of the Legislative Assembly provides quality programs and services to create an environment in which elected Members can best fulfill their roles and responsibilities as representatives of the people of Nunavut.

## GOALS

---

- ◆ A functional legislative process.
- ◆ Empowered Members.
- ◆ An open and reflective institution.
- ◆ An Assembly that takes its place in Canada and the world.

## x=4g6ymi q5 xroExb5 DETAIL OF EXPENDITURES



rhj 7mz 5	DESCRIPTION	2001-2002	2000-2001	2000-2001
		Estimates (\$000)	Revised Estimates (\$000)	Main Estimates (\$000)
w6vNw/6tk5 xrosyx5	Compensation and Benefits	4,924	4,793	4,793
gi /sJ5 x7ml wvJt5	Grants and Contributions	-	-	-
i sDc5bDt5 wqCJt9l	Travel and Transportation	1,462	1,539	1,539
x9M}=oE0Jt5 hN4fb9l	Materials and Supplies	212	194	194
i s=6bsJi 4 vmpcDt5	Purchased Services	336	333	333
57m6ftk5	Utilities	-	-	-
y8g4tbsJi 4 vmpcDt5	Contract Services	1,573	1,531	1,551
xroExo5 xro6h9l	Fees & Payments	367	429	534
xyq5 xroExo5	Other Expenses	877	765	732
vt9l Q5 xsM5tJt5	<b>Total Operations and Maintenance</b>	<b>9,751</b>	<b>9,584</b>	<b>9,676</b>
vt9l Q5 xrgJtk5	<b>Total Capital</b>	<b>180</b>	<b>687</b>	<b>-</b>
vt9l Q5 xroExb5	<b>Total Expenditures</b>	<b>9,931</b>	<b>10,271</b>	<b>9,676</b>

ttC3ts2 x9M}=z

ttC3ts2 x9M}=z i 4g5 wvJ3gw?4S5 moZos3ti 4 xSMbsi q8i 4 moZos3t5 xro3hExoq8i 4, xrosyxq8i 4, rNs0/4nE?4bq8i 9l x7m i Dx3bs=0ym/q8k5 xro3gExo8i 4 x7m xgDm3i x3g5 rNs/dtq8i 4 xro3hw?4gt4 moZos3t4f5 vtm=0Jx3t9l Q5 xro3hExoq8i 4, vtmpCM5 vtmpCMavw8N3g9l WoExq8i 4. ttC3ts2 x9M}=z 5 xSM5y?4rK5 wvJ3gwi 3u5 cspn3ti 4, vtmpCM5 WoExq8i 4, moZos3=7u scomZc3=z 8i 4, gnsmc5bstoEi 3u5 r4fgw8N3i 9l gnsmt5ypsi 3u5, x7m rNs/oEi 3u5 x9M}=oEi 3u9l .

OFFICE OF THE CLERK

The Office of the Clerk provides support for the Members in the administration of Members' indemnities, allowances, salaries and constituency expenses and maintains the budgets for the costs of holding Sessions, Standing and Special Committees. The Clerk's Office also administers support services for research, committee work, the legislative library, communications and public affairs, and finance and administration.

		2001-2002 †Ns/5 xg6g4n5 <b>Main Estimates</b> (\$000)	2000-2001 x6rQx3ymJ5 x3i i b5 Revised Estimates (\$000)	2000-2001 †Ns/5 x3i i b5 Main Estimates (\$000)
rhj 7mz 5	<b>DESCRIPTION</b>			
w6vNw/6tk5 xrosyx5	Compensation and Benefits	2,017	2,107	2,107
gi /sJ5 x7ml wvJt5	Grants and Contributions	-	-	-
i sDc5bD†5 wqCJ†9l	Travel and Transportation	1,139	1,106	1,106
x9M}=oE0J†5 hN4fb9l	Materials and Supplies	191	161	161
i s†6bsJi 4 vmPCD†5	Purchased Services	303	320	320
†7m6ftk5	Utilities	-	-	-
†8g†6bsJi 4 vmPCD†5	Contract Services	1,190	1,157	1,237
xroExo5 xro6h†9l	Fees & Payments	53	72	102
xyq5 xroExo5	Other Expenses	286	126	93
vt9l Q5 xSM5tJ†5	<b>Total Operations and Maintenance</b>	<b>5,179</b>	<b>5,049</b>	<b>5,126</b>
vt9l Q5 xrgJ†tk5	<b>Total Capital</b>	<b>180</b>	<b>687</b>	<b>-</b>
vt9l Q5 xroExb5	<b>Total Expenditures</b>	<b>5,359</b>	<b>5,736</b>	<b>5,126</b>

xro6hw0Jt5 r[Zg6gQ5 moZos3t5

b4fx rNs/5 xgDm3i x3g5 xro3hw0Jts?4g5 xro3bs0Jyxk5, xro3hExoq8k5, i E0Jt4nq8k5 csbm5, x7m k6vsyx4n5 xsMbsi q8k5 r[Zg6bs9l t4 moZos3t5 moZos3=7j 5. moZos3t5 i Dx3bs=Qym/q8k5 wvJ3tq5b rNs0/4nq8i 4 xro3gw?7uJ5.

EXPENDITURES ON BEHALF OF MEMBERS

This budget area provides for the allowances, indemnities, per diems, and pension administration on behalf of the Members of the Legislative Assembly. It also provides for the salaries of Members' constituency assistants.

		2001-2002 rNs/5 xg6g4n5 Main Estimates (\$000)	2000-2001 x6r0x3ymJ5 x3i i b5 Revised Estimates (\$000)	2000-2001 rNs/5 x3i i b5 Main Estimates (\$000)
rhj 7mz 5	<b>DESCRIPTION</b>			
w6vNw/6tk5 xrosyx5	Compensation and Benefits	2,459	2,270	2,270
gi /sh5 x7ml wvJt5	Grants and Contributions	-	-	-
i sDc5bDt5 wqCJt9l	Travel and Transportation	250	390	390
x9M}=oE0Jt5 hN4fb9l	Materials and Supplies	-	19	19
i s}6bsJi 4 vmPCDt5	Purchased Services	-	-	-
37m6ftk5	Utilities	-	-	-
y8g6bsJi 4 vmPCDt5	Contract Services	278	288	288
xroEx05 xro6h9l	Fees & Payments	300	325	400
xyq5 xroEx05	Other Expenses	547	637	637
vt9l Q5 xsM5tJt5	<b>Total Operations and Maintenance</b>	<b>3,834</b>	<b>3,929</b>	<b>4,004</b>
vt9l Q5 xrgJtk5	<b>Total Capital</b>	-	-	-
vt9l Q5 xroExb5	<b>Total Expenditures</b>	<b>3,834</b>	<b>3,929</b>	<b>4,004</b>



sc6ts2 x9M}=z

sc6t i Dx3bs?4S6 moZos3tk5 xsM5ypsd9l A moZos3=7u vtm=0Jx3t9l Q5 x7m  
 xgo3t5ypsd9l A moZq8i 4 moZos3=s2. sc6t vm0/c3S6 x6r5hwi 3u5 xgxZ3i 5 bmw8k0m6  
 xsM5y0Jt0i x3bq8i 4 xsMi Ei x3bz i 9l moZos3t5 ttC3=z 5b w5y?sbs9l i xsM5yp4f8k5  
 Wp4yC3t9l vtmpq8k5. sc6t wobE/symi 4f5 r[Z3gwpsJ6 moZos6t5 vtmpq8i 4  
 SC=8yk5Fx=4ymJk9l , vNbs9l yM3Jxul Z?m4fq8k5 xsM5y?8i q8i .

OFFICE OF THE SPEAKER

The Speaker is elected by the Members to preside over proceedings in the House and enforce the rules of the Legislative Assembly. The Speaker is responsible for developing policies on the overall control and operation of the Office of the Legislative Assembly as Chair of the Management and Services Board. The Speaker is the official representative of the Legislative Assembly for provincial/territorial, federal and international functions.

		2001-2002 fNs/5 xg6g4n5 <b>Main Estimates</b> (\$000)	2000-2001 x6r0x3ymJ5 x3i i b5 Revised Estimates (\$000)	2000-2001 fNs/5 x3i i b5 Main Estimates (\$000)
rhj 7mz 5	<b>DESCRIPTION</b>			
w6vNw/6tk5 xrosyx5	Compensation and Benefits	147	135	135
gi /sh5 x7ml wvJt5	Grants and Contributions	-	-	-
i sDc5bDt5 wqCJt9l	Travel and Transportation	18	18	18
x9M}=oE0Jt5 hN4fb9l	Materials and Supplies	6	1	1
i s=6bsJi 4 vmpcDt5	Purchased Services	1	3	3
37m6ftk5	Utilities	-	-	-
y8g4bsJi 4 vmpcDt5	Contract Services	-	1	1
xroEx05 xro6h9l	Fees & Payments	5	7	7
xyq5 xroEx05	Other Expenses	-	-	-
vt9l Q5 xsM5tJt5	<b>Total Operations and Maintenance</b>	<b>177</b>	<b>165</b>	<b>165</b>
vt9l Q5 xrgJtk5	<b>Total Capital</b>	-	-	-
vt9l Q5 xroExb5	<b>Total Expenditures</b>	<b>177</b>	<b>165</b>	<b>165</b>

**i Dx6goEp4f5 xz J6yz b x[M[=x**

kNKu i Dx6goEp4f5 x[M[=x] 5g5 xsM5tpsJ5 i Dx6goEJti 4, xf8i z i \_i Dx6t5tJti 4 x7ml  
 grpDbsQxo1k5 i Dx6t5tp5 x[M[=xi 4 kNKu.

**OFFICE OF THE CHIEF ELECTORAL OFFICER**

The Nunavut elections office provides for the administration of elections, by-elections and plebiscites for the Territory of Nunavut.

		<b>2001-2002</b>	2000-2001	2000-2001
		†Ns/5	x6rQx3ymJ5	†Ns/5
		xg6g4n5	x3i i b5	x3i i b5
		<b>Main</b>	Revised	Main
		<b>Estimates</b>	Estimates	Estimates
		<b>(\$000)</b>	<b>(\$000)</b>	<b>(\$000)</b>
rhj 7mz 5	<b>DESCRIPTION</b>			
w6vNw/6tk5 xrosyx5	Compensation and Benefits	<b>42</b>	-	-
gi /sh5 x7ml wvJt5	Grants and Contributions	-	-	-
i sDc5bD}5 wqCJ}9l	Travel and Transportation	<b>5</b>	-	-
x9M}=oE0Jt5 hN4fb9l	Materials and Supplies	<b>5</b>	-	-
i s=6bsJi 4 vmpcD}5	Purchased Services	<b>7</b>	-	-
§7m6ftk5	Utilities	-	-	-
y8g}4bsJi 4 vmpcD}5	Contract Services	<b>10</b>	-	-
xroExo5 xro6h}9l	Fees & Payments	<b>2</b>	-	-
xyq5 xroExo5	Other Expenses	<b>1</b>	-	-
vt9l Q5 xsM5tJt5	<b>Total Operations and Maintenance</b>	<b>72</b>	-	-
vt9l Q5 xrgJtk5	<b>Total Capital</b>	-	-	-
vt9l Q5 xroExb5	<b>Total Expenditures</b>	<b>72</b>	-	-

w7u4fz 9l t4 vuyNc3=sJ5 x[M[=5

x[M[=q5 moZos3=1u xSM5tpc3=sJ5 wvJ6ts9l t4 w6vNw7uk5 Wi 3] bsA8N6gi 4 cspn6t5  
 vuyNz k5, gn6bsJ8N6gi 4 XXbs5txExc6gi l nS0pp5 vuyNz, x7ml wobE/symJi 4  
 scsyoE5 vuyNb x[M[=x. 4fx Wz h5 Z?mt4f8i w6vNw/6tsJ5 grox6gu4 si 4yc5bExc7aJ5  
 moZos3=1j5 w7u4fz 9l t4 WNhx3=c3mb.

OFFICES OF INDEPENDENT COMMISSIONERS

The office of the Legislative Assembly provides administrative support services to the Conflict of Interest Commissioner, the Information and Privacy Commissioner, and the Official Languages Commissioner. These three independent officers report directly to the Legislative Assembly as a whole.

		2001-2002 †Ns/5 xg6g4n5 <b>Main Estimates (\$000)</b>	2000-2001 x6rQx3ymJ5 x3i i b5 Revised Estimates (\$000)	2000-2001 †Ns/5 x3i i b5 Main Estimates (\$000)
rhj 7mz 5	<b>DESCRIPTION</b>			
w6vNw/6tk5 xrosyx5	Compensation and Benefits	259	281	281
gi /sh5 x7ml wvJt5	Grants and Contributions	-	-	-
i sDc5bD5 wqCJt9l	Travel and Transportation	50	25	25
x9M}=oE0Jt5 hN4fb9l	Materials and Supplies	10	13	13
i s=6bsJi 4 vmpcD5	Purchased Services	25	10	10
7m6ftk5	Utilities	-	-	-
y8g4tbsJi 4 vmpcD5	Contract Services	95	85	25
xroExo5 xro6h9l	Fees & Payments	7	25	25
xyq5 xroExo5	Other Expenses	43	2	2
vt9l Q5 xSM5tJt5	<b>Total Operations and Maintenance</b>	<b>489</b>	<b>441</b>	<b>381</b>
vt9l Q5 xrgJtk5	<b>Total Capital</b>	-	-	-
vt9l Q5 xroExp5	<b>Total Expenditures</b>	<b>489</b>	<b>441</b>	<b>381</b>

x=5g3ymi q5 ñNs/5 xg6g4n5  
DISTRIBUTION OF BUDGET

	xz J6yv3=4 Headquarters (\$000)	er3pl 4 Qikiqtaaluk (\$000)	r?9o6 Kivalliq (\$000)	et3us5 Kitikmeot (\$000)
w6vNw/6tk5 xrosyx5 Compensation and Benefits	4,924	-	-	-
gi /sJ5 x7ml wvJt5 Grants and Contributions	-	-	-	-
i sDc5bDjt5 wqCJt9l Travel and Transportation	1,462	-	-	-
x9M}=oE0Jt5 hN4fb9l Materials and Supplies	212	-	-	-
i s=6bsJi 4 vmpcDjt5 Purchased Services	336	-	-	-
§7m6ftk5 Utilities	-	-	-	-
ÿ8gÿ4bsJi 4 vmpcDjt5 Contract Services	1,573	-	-	-
xroExò5 xro6hjt9l Fees & Payments	367	-	-	-
xyq5 xroExò5 Other Expenses	877	-	-	-
vt9l 05 xSM5tJt5 ÿkesmt5tJt9l <b>Total Operations and Maintenance</b>	<b>9,751</b>	-	-	-
vt9l 05 xrgÿtk5 <b>Total Capital</b>	<b>180</b>	-	-	-
vt9l 05 xroExò5 <b>Total Expenditures</b>	<b>9,931</b>	-	-	-