

# SAFE WORK

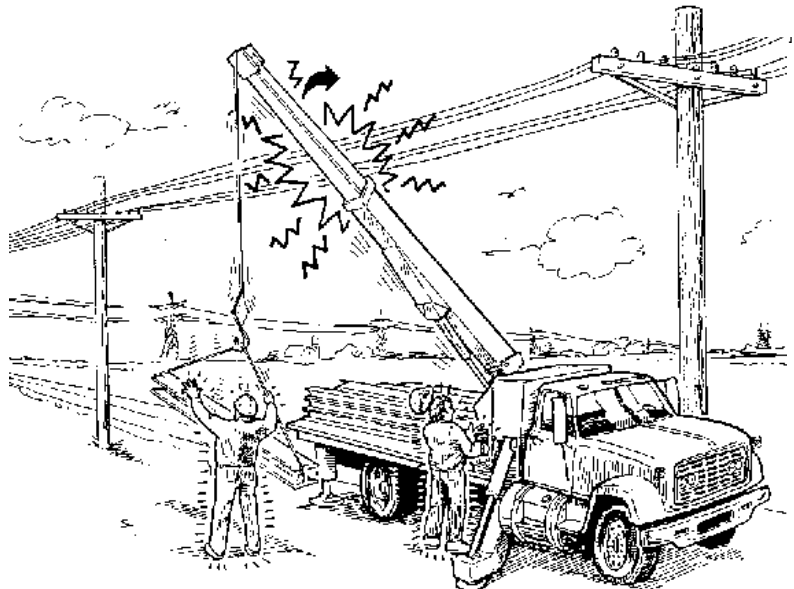
**S** SPOT THE HAZARD  
**A** ASSESS THE RISK  
**F** FIND A SAFER WAY  
**E** EVERYDAY

**Bulletin No. 106**  
**June 2005**

## DEATH OR SERIOUS INJURY CAN OCCUR WHEN WORKING NEAR POWERLINES

In May 2005, a worker was electrocuted when the boom of a mobile crane contacted an overhead power line. The worker was on the ground re-adjusting the outrigger when the power line contact occurred.

A serious hazard is present whenever people or equipment work near energized electrical transmission lines. Every year preventable incidents occur when safe work practices are not followed. The seriousness of this issue is further illustrated by two previous fatalities:



- ❑ A worker was electrocuted while guiding the placement of a structural steel column which came in contact with a high voltage overhead line.
- ❑ Another fatality occurred when the boom of a crane came in contact with a 7200-volt transmission line. A worker who was guiding the load was killed upon contact because he was touching the load.

**The deaths of all three workers could have been prevented** if the power authority had been contacted, necessary precautions were taken, and safe work practices were followed.

### Prevention Measures:

- Manitoba Regulations require that when a machine, or any part of a machine, might come within 3 metres (10 feet) of any electrical transmission line, Manitoba Hydro must be notified *before work commences*. Manitoba Hydro will then de-energize, guard or re-route the electrical line, and confirm that protection has been provided.
- Never lose awareness of the overhead hazard and location of the machine/machine parts. If work is conducted near an electrical transmission line, a person should be assigned by the employer to signal and warn the machine operator if any part of the machine comes within 10 feet of the power line.
- Proper planning and precautionary action taken at the worksite prior to commencing work, includes:
  - Housekeeping – knock down spoiled piles, debris, etc.
  - Identify hazards to all sub-contractors
  - Know the limitation/capacity of the machine
  - Know the experience/training and qualifications of the machine operator.

**Do not take unnecessary risks.** If you are in doubt about the safety of an operation in proximity to electrical transmission lines, contact *Manitoba Hydro*. If you are still not satisfied, contact the Workplace Safety and Health Division for further assistance.