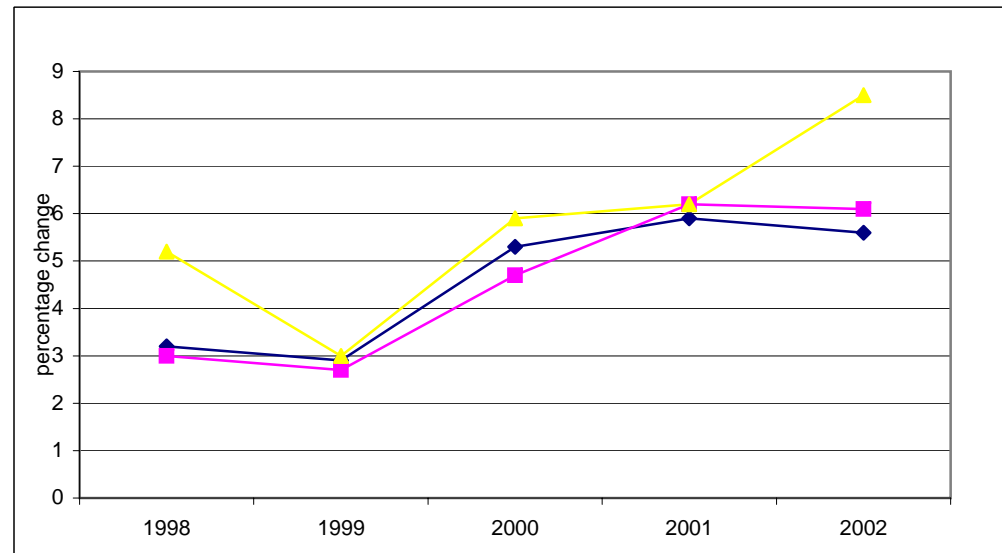


# Nova Scotia/Canada Economic Indicators

## SEPTEMBER 2005

(compiled October 25, 2005)



Notes:

- (1) Statistics Canada estimate July 1
- (2) Annual average
- a Actual
- sa Seasonally adjusted
- p Preliminary
- pa Preliminary actual
- i Intention
- ri Revised intention

Data Sources:

Population, Vital Statistics, Migration - Statistics Canada, Demographic Estimates Section, Quarterly Demographic Statistics, Catalogue No. 91-002-XPB

Labour Force - Statistics Canada, Labour Statistics Division, Labour Force Survey, monthly Catalogue No. 71-001-XIE; Labour Force Historical Review, Catalogue No. 71F0004XCB

Employment Insurance - Statistics Canada, Labour Statistics Division, Employment Insurance Statistics, monthly

Consumer Price Index - Statistics Canada, Prices Division, The Consumer Price Index, Catalogue 62-001-XPB

Income (Personal Income per Capita, Total Wages & Salaries, Average Weekly Wages) - Statistics Canada, System of National Accounts, Provincial Economic Accounts, quarterly, Catalogue No. 13-213-PPB; Estimates of Labour Income, quarterly, Catalogue No. 13F0016-XPB; Employment, Earnings & Hours, monthly, Catalogue No. 72-002-XIB

Retail/Wholesale - Statistics Canada, Retail Trade, monthly, Catalogue No. 63-005-XPB; New Motor Vehicle Sales, monthly, Catalogue No. 63-007-XPB;  
Wholesale Trade, monthly, Catalogue No. 63-008-XIB

Commodity Sector - Statistics Canada, Farm Cash Receipts, quarterly, Catalogue No. 21-001-XIB; Sawmills & Planing Mills, monthly, Catalogue No. 35-003-XIB;

Canada's Mineral Production, annual, Catalogue No. 26-202-XIB; Natural Gas Transportation and Distribution, monthly, Catalogue No. 55-002-XIB; Electric Power Statistics, monthly, Catalogue No. 57-001-XIB; Fisheries & Oceans Canada statistics, annual

monthly, Catalogue No. 57-001-XIB; Monthly Survey of Manufacturing Shipments, CANSIM Tables 304-0014 and 304-0015; Canadian International Merchandise Trade, monthly, Catalogue No. 65-001-XPB

Construction - Statistics Canada, Private and Public Investment in Canada, semi-annual, Catalogue Nos. 61-205-XIB and 61-206-XIB; Building Permits, monthly, Catalogue No. 64-001-XIB;  
Canada Mortgage and Housing statistics, monthly/quarterly

Gross Domestic Product - Statistics Canada, System of National Accounts, Provincial Economic Accounts, Catalogue No. 13-213-PPB

## NOVA SCOTIA ECONOMIC INDICATORS

INDICATOR	Current Reference Period	MONTHLY/QUARTERLY/YEAR-TO-DATE STATISTICS					ANNUAL STATISTICS				
		% Change					Year-over-Year % Change				
		Reference Period									
		2 Years Ago	1 Year Ago	Current	1 Year Ago/ 2 Years Ago	Current/ 1 Year Ago	2002	2003	2004	2003/2002	2004/2003
<b>POPULATION</b>	July 1/2005	936,302	937,509	937,889	0.1	0.0	934,507 (1)	936,302 (1)	937,509 (1)	0.2	0.1
<b>VITAL STATISTICS</b>											
Births	Apr-June/2005	2,226	2,215	2,202	(0.5)	(0.6)	8,663	8,650	8,605	(0.2)	(0.5)
Deaths	Apr-June/2005	2,115	2,156	2,196	1.9	1.9	7,997	8,191	8,336	2.4	1.8
Marriages	Apr-June/2005	1,212	1,206	1,207	(0.5)	0.1	4,899	4,878	4,862	(0.4)	(0.3)
<b>MIGRATION</b>											
Total Net Migration	Apr-June/2005	751	571	83	(24.0)	(85.5)	1,068	1,484	252	39.0	(83.0)
Net Interprovincial	Apr-June/2005	117	(65)	(127)	--	--	(256)	427	(954)	--	--
Net International	Apr-June/2005	634	636	210	0.3	(67.0)	1,324	1,057	1,206	(20.2)	14.1
Immigration	Apr-June/2005	309	459	459	48.5	0.0	1,422	1,476	1,770	3.8	19.9
Emigration	Apr-June/2005	(169)	(177)	249	4.7	(240.7)	98	419	564	327.6	34.6
<b>LABOUR FORCE</b>											
Seasonally Adjusted											
Total Labour Force ('000)	Sept/2005	476.7	486.4	480.9	2.0	(1.1)	467.2	474.7	484.3	1.6	2.0
Employed ('000)	Sept/2005	431.8	444.6	440.5	3.0	(0.9)	422.4	431.3	441.6	2.1	2.4
Goods Industries ('000)	Sept/2005	89.9	94.7	88.7	5.3	(6.3)	89.9	92.2	93.0	2.6	0.9
Service Industries ('000)	Sept/2005	341.9	349.9	351.9	2.3	0.6	332.4	339.1	348.6	2.0	2.8
Unemployment ('000)	Sept/2005	44.9	41.7	40.4	(7.1)	(3.1)	44.8	43.4	42.7	(3.1)	(1.6)
Unemployment Rate (%)	Sept/2005	9.4	8.6	8.4	--	--	9.6	9.1	8.8	--	--
Participation Rate (%)	Sept/2005	63.2	64.2	63.2	--	--	62.5	63.1	64.0	--	--
Actual											
Employed ('000)	Sept/2005	436.1	449.3	444.6	3.0	(1.0)	422.4	431.3	441.6	2.1	2.4
Unemployment Rate (%)	Sept/2005	8.5	7.7	7.8	--	--	9.6	9.1	8.8	--	--

## NOVA SCOTIA ECONOMIC INDICATORS

INDICATOR	Current Reference Period	MONTHLY/QUARTERLY/YEAR-TO-DATE STATISTICS					ANNUAL STATISTICS				
		% Change					Year-over-Year % Change				
		Reference Period									
		2 Years Ago	1 Year Ago	Current	1 Year Ago/ 2 Years Ago	Current/ 1 Year Ago	2002	2003	2004	2003/2002	2004/2003
<b>EMPLOYMENT INSURANCE BENEFITS (EI)</b>											
Total Beneficiaries (#)	Aug/2005	36,290	36,170	37,040	(0.3)	2.4	40,689 (2)	40,698 (2)	40,941 (2)	0.0	0.6
Total Benefits Paid (\$'000)	Aug/2005	45,689	55,169	56,663	20.7	2.7	661,365	680,374	678,533	2.9	(0.3)
<b>CONSUMER PRICE INDEX (1992=100)</b>											
<b>Nova Scotia</b>											
All-Items	Sept/2005	124.1	126.8	132.3	2.2	4.3	119.8	123.9	126.1	3.4	1.8
Food	Sept/2005	121.8	126.5	129.5	3.9	2.4	119.9	122.5	125.3	2.2	2.3
Shelter	Sept/2005	121.4	125.9	133.7	3.7	6.2	117.2	122.3	125.4	4.4	2.5
<b>INCOME</b>											
Personal Income Per Capita (\$)	2004	25,447	26,269	27,092	3.2	3.1	25,447	26,269	27,092	3.2	3.1
Total Wages & Salaries (\$ millions)	Jan-June/2005	6,400.0	6,568.4	6,898.3	2.6	5.0	12,539.6	12,997.2	13,368.9	3.6	2.9
Average Weekly Wages & Salaries (\$)	July/2005	597.86	612.61	633.75	2.5	3.5	590.68	597.08	611.93	1.1	2.5
<b>RETAIL/WHOLESALE TRADE</b>											
All Retail Outlets (\$ millions) (sa)	Jan-Aug/2005	6,681.1	6,841.1	7,082.5	2.4	3.5	9,839.5	10,014.9	10,296.5	1.8	2.8
Dept. Store Sales (\$ millions) (a)	Jan-Aug/2005	391.6	421.3	441.4	7.6	4.8	658.5	710.2	744.2	7.9	4.8
New Motor Vehicle Sales (\$ millions) (a)	Jan-Aug/2005	933.3	915.7	984.6	(1.9)	7.5	1,288.8	1,313.1	1,282.2	1.9	(2.4)
Wholesale Trade (\$millions) (sa)	Jan-Aug/2005	4,304.2	4,037.7	4,136.8	(6.2)	2.5	6,225.3	6,439.0	6,040.9	3.4	(6.2)

## NOVA SCOTIA ECONOMIC INDICATORS

INDICATOR	Current Reference Period	MONTHLY/QUARTERLY/YEAR-TO-DATE STATISTICS					ANNUAL STATISTICS				
		% Change					Year-over-Year % Change				
		2 Years Ago	1 Year Ago	Current	Reference Period		2002	2003	2004	2003/2002	2004/2003
			1 Year Ago/	Current/							
<b>COMMODITY SECTORS</b>											
Farm Cash Receipts (\$ millions)	Jan-June/2005	190.7	219.8	218.0	15.3	(0.8)	404.7	424.8	451.4	5.0	6.3
Fish Landings (\$ millions)	Jan-Dec/2004	801.1	825.9	697.6 p	3.1	(15.5)	801.1	825.9	697.6 p	3.1	(15.5)
Lumber Production (000m3)	Jan-June/2005	901.3	851.4	875.7	(5.5)	2.9	1,871.6	1,680.3	1,784.5	(10.2)	6.2
Mineral Production <sup>(1)</sup> (\$ millions)	2004	-- --	263.2	278.3	-- --	5.7	-- --	263.2	278.3	-- --	5.7
Marketable Gas Receipts (million m3)	Jan-Apr/2005	1,493.3	1,517.3	1,262.5	1.6	(16.8)	5,209.4	4,469.5	4,174.1	(14.2)	(6.6)
Power Generation (GW.h)	Jan-July/2005	7,377.5	7,418.3	7,343.3	0.6	(1.0)	12,126.9	12,386.9	12,563.8	2.1	1.4
Manufacturing Shipments (\$ millions)	Jan-Aug/2005	5,705.3	6,060.6	6,433.5	6.2	6.2	8,441.9	8,642.5	9,281.1	2.4	7.4
Foreign Exports (\$ millions)	Jan-Aug/2005	3,691.4	3,771.9	3,587.1	2.2	(4.9)	5,226.0	5,349.3	5,479.1	2.4	2.4
Foreign Imports (\$ millions)	Jan-Aug/2005	3,855.8	4,407.6	4,626.1	14.3	5.0	5,140.0	5,783.9	6,591.9	12.5	14.0
<b>CONSTRUCTION</b>											
Capital Construction											
Expenditures (\$ millions)	2005	3,441.9	3,615.4 pa	3,589.5 l	5.0	(0.7)	3,241.6	3,441.9	3,615.4 pa	6.2	5.0
Building Permits (\$ millions)	Jan-Aug/2005	708.6	793.4	790.6 p	12.0	(0.4)	877.3	1,014.1	1,125.8	15.6	11.0
Housing Starts Centres 10,000+											
Starts (units)	Jan-Sept/2005	2,486	2,455	2,441	(1.2)	(0.6)	3,721	3,589	3,313	(3.5)	(7.7)
Completions (units)	Jan-Sept/2005	2,615	2,250	1,783	(14.0)	(20.8)	2,955	3,634	3,526	23.0	(3.0)
All Areas											
Starts (units)	Jan-Sept/2005	3,568	3,474	3,515	(2.6)	1.2	4,970	5,096	4,717	2.5	(7.4)
Completions (units)	Jan-Sept/2005	3,733	3,110	2,660	(16.7)	(14.5)	4,011	5,434	4,896	35.5	(9.9)
Under Construction (units)	Sept 30/2005	2,977	3,199	3,441	7.5	7.6	3,119	2,770	2,653	(11.2)	(4.2)
<b>GROSS DOMESTIC PRODUCT</b>											
Real GDP (chained '97 \$ millions)	2004	24,874	25,180	25,500	1.2	1.3	24,874	25,180	25,500	1.2	1.3

<sup>(1)</sup> Excludes oil and gas.

## CANADA ECONOMIC INDICATORS

INDICATOR	Current Reference Period	MONTHLY/QUARTERLY/YEAR-TO-DATE STATISTICS					ANNUAL STATISTICS				
		% Change					Year-over-Year % Change				
		Reference Period									
		2 Years Ago	1 Year Ago	Current	1 Year Ago/ 2 Years Ago	Current/ 1 Year Ago	2002	2003	2004	2003/2002	2004/2003
<b>POPULATION</b>	July 1/2005	31,669,150	31,974,363	32,270,507	1.0	0.9	31,372,587 (1)	31,669,150 (1)	32,270,507 (1)	0.9	1.9
<b>VITAL STATISTICS</b>											
Births	Apr-June/2005	85,486	85,330	86,763	(0.2)	1.7	328,802	335,202	336,003	1.9	0.2
Deaths	Apr-June/2005	55,300	56,490	57,400	2.2	1.6	223,603	227,285	232,176	1.6	2.2
Marriages	Apr-June/2005	37,890	37,904	38,414	0.0	1.3	146,738	145,048	146,377	(1.2)	0.9
<b>MIGRATION</b>											
Total Net Migration	Apr-June/2005	65,460	67,541	67,254	3.2	(0.4)	209,104	188,250	193,239	(10.0)	2.7
Immigration	Apr-June/2005	58,876	67,242	74,471	14.2	10.8	229,071	221,402	235,826	(3.3)	6.5
Emigration	Apr-June/2005	(6,584)	(299)	7,217	--	--	19,967	33,152	42,587	66.0	28.5
<b>LABOUR FORCE</b>											
Seasonally Adjusted											
Total Labour Force ('000)	Sept/2005	17,027.6	17,211.2	17,370.2	1.1	0.9	16,580.1	16,954.0	17,183.4	2.3	1.4
Employed ('000)	Sept/2005	15,680.3	16,003.4	16,198.4	2.1	1.2	15,307.9	15,665.1	15,949.7	2.3	1.8
Goods Industries ('000)	Sept/2005	3,912.1	3,995.0	4,010.4	2.1	0.4	3,881.4	3,930.6	3,992.7	1.3	1.6
Service Industries ('000)	Sept/2005	11,768.1	12,008.4	12,188.0	2.0	1.5	11,426.5	11,734.4	11,957.0	2.7	1.9
Unemployment ('000)	Sept/2005	1,347.3	1,207.9	1,171.8	(10.3)	(3.0)	1,272.2	1,288.9	1,233.7	1.3	(4.3)
Unemployment Rate (%)	Sept/2005	7.9	7.0	6.7	--	--	7.7	7.6	7.2	--	--
Participation Rate (%)	Sept/2005	67.6	67.4	67.1	--	--	66.9	67.5	67.6	--	--
Actual											
Employed ('000)	Sept/2005	15,744.4	16,067.0	16,266.1	2.0	1.2	15,307.9	15,665.1	15,949.7	2.3	1.8
Unemployment Rate (%)	Sept/2005	7.3	6.5	6.2	--	--	7.7	7.6	7.2	--	--

## CANADA ECONOMIC INDICATORS

INDICATOR	Current Reference Period	MONTHLY/QUARTERLY/YEAR-TO-DATE STATISTICS					ANNUAL STATISTICS					
		2 Years Ago	1 Year Ago	Current	% Change		2002	2003	2004	Year-over-Year % Change		
					1 Year Ago/ 2 Years Ago	Current/ 1 Year Ago				2003/2002	2004/2003	
<b>EMPLOYMENT INSURANCE BENEFITS (EI)</b>												
Total Beneficiaries (#)	Aug/2005	816,300	792,800	780,530	p	(2.9)	(1.5)	828,723 (2)	841,279 (2)	826,525 (2)	1.5	(1.8)
Total Benefits Paid (\$'000)	Aug/2005	1,074,692	1,327,987	1,304,435		23.6	(1.8)	14,683,220	14,950,569	14,970,341	1.8	0.1
<b>CONSUMER PRICE INDEX (1992=100)</b>												
<b>Canada</b>												
All-Items	Sept/2005	122.7	124.9	129.1		1.8	3.4	119.0	122.3	124.6	2.8	1.9
Food	Sept/2005	121.3	124.7	127.3		2.8	2.1	120.3	122.4	124.9	1.7	2.0
Shelter	Sept/2005	117.9	121.2	125.2		2.8	3.3	113.8	117.5	120.5	3.3	2.6
<b>INCOME</b>												
Personal Income Per Capita (\$)	2004	28,620	29,204	30,125		2.0	3.2	28,620	29,204	30,125	2.0	3.2
Total Wages & Salaries (\$ millions)	Jan-June/2005	268,070.5	278,251.2	290,747.4		3.8	4.5	521,567.6	541,741.1	563,149.2	3.9	4.0
Average Weekly Wages & Salaries (\$)	July/2005	692.63	704.09	727.32		1.7	3.3	680.87	690.35	705.68	1.4	2.2
<b>RETAIL/WHOLESALE TRADE</b>												
All Retail Outlets (\$ millions) (sa)	Jan-Aug/2005	220,102.7	228,900.8	245,159.5		4.0	7.1	319,525.4	331,146.6	346,721.5	3.6	4.7
Dept. Store Sales (\$ millions) (a)	Jan-Aug/2005	12,696.9	13,520.1	13,861.5		6.5	2.5	20,959.9	21,681.2	22,832.4	3.4	5.3
New Motor Vehicle Sales (\$ millions) (a)	Jan-Aug/2005	34,680.9	33,627.5	36,391.3		(3.0)	8.2	52,227.5	50,493.3	49,639.2	(3.3)	(1.7)
Wholesale Trade (\$millions) (sa)	Jan-Aug/2005	278,876.8	297,689.3	315,252.0		6.7	5.9	411,527.4	421,234.6	450,300.9	2.4	6.9

## CANADA ECONOMIC INDICATORS

INDICATOR	Current Reference Period	MONTHLY/QUARTERLY/YEAR-TO-DATE STATISTICS					ANNUAL STATISTICS						
		% Change					Year-over-Year % Change						
		2 Years Ago	1 Year Ago	Current	Reference Period		2002	2003	2004	2003/2002	2004/2003		
			1 Year Ago/	Current/									
<b>COMMODITY SECTORS</b>													
Farm Cash Receipts (\$ millions)	Jan-June/2005	16,861.9	18,178.8	18,898.1	7.8	4.0	36,177.4	34,457.8	36,543.1	(4.8)	6.1		
Fish Landings (\$ millions)	Jan-Dec/2004	2,177.0	2,231.4	2,177.6	p	2.5	(2.4)	2,177.0	2,231.4	2,177.6	p	2.5	(2.4)
Lumber Production (000m3)	Jan-June/2005	40,973.1	42,127.2	42,326.9	2.8	0.5	79,803.7	78,300.2	83,511.9	(1.9)	6.7		
Mineral Production <sup>(1)</sup> (\$ millions)	2004	19,918.0	20,077.2	24,167.6	0.8	20.4	19,918.0	20,077.2	24,167.6	0.8	20.4		
Marketable Gas Receipts (million m3)	Jan-Apr/2005	57,519.3	57,049.0	57,787.6	(0.8)	1.3	172,113.1	166,395.6	167,283.0	(3.3)	0.5		
Power Generation (GW.h)	Jan-July/2005	336,829.5	330,867.0	345,109.2	(1.8)	4.3	581,062.9	564,203.0	568,436.9	(2.9)	0.8		
Manufacturing Shipments (\$ millions)	Jan-Aug/2005	361,990.8	391,158.8	403,458.1	8.1	3.1	551,693.0	546,770.2	593,452.5	(0.9)	8.5		
Foreign Exports (\$ millions)	Jan-Aug/2005	236,519.0	258,036.4	263,307.8	9.1	2.0	365,290.9	354,098.0	385,033.5	(3.1)	8.7		
Foreign Imports (\$ millions)	Jan-Aug/2005	225,477.4	235,410.4	250,852.1	4.4	6.6	348,849.1	335,962.3	355,566.7	(3.7)	5.8		
<b>CONSTRUCTION</b>													
Capital Construction													
Expenditures (\$ millions)	2005	136,763.6	150,501.8	158,843.3	i	10.0	5.5	126,034.1	136,763.6	150,501.8	pa	8.5	10.0
Building Permits (\$ millions)	Jan-Aug/2005	33,985.2	37,178.3	40,052.3		9.4	7.7	47,262.1	50,772.0	55,578.6		7.4	9.5
Housing Starts Centres 10,000+													
Starts (units)	Jan-Sept/2005	140,860	151,411	144,254		7.5	(4.7)	179,126	191,907	204,392		7.1	6.5
Completions (units)	Jan-Sept/2005	126,563	135,724	138,909		7.2	2.3	161,310	173,956	188,345		7.8	8.3
All Areas													
Starts (units)	Jan-Sept/2005	160,191	172,514	167,076		7.7	(3.2)	205,034	218,426	233,431		6.5	6.9
Completions (units)	Jan-Sept/2005	144,263	155,586	156,836		7.8	0.8	185,626	199,244	215,621		7.3	8.2
Under Construction (units)	Sept 30/2005	134,849	154,284	164,059		14.4	6.3	119,210	137,774	155,230		15.6	12.7
<b>GROSS DOMESTIC PRODUCT</b>													
Real GDP (chained '97 \$ millions)	2004	1,074,621	1,096,359	1,126,625		2.0	2.8	1,074,621	1,096,359	1,126,625		2.0	2.8

<sup>(1)</sup> Excludes oil and gas.