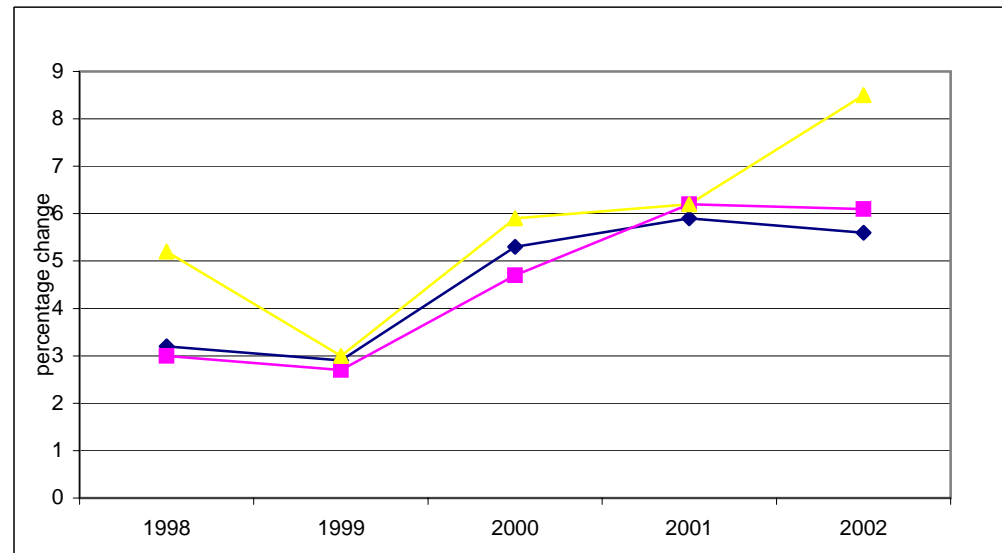


Nova Scotia/Canada Economic Indicators

January 2006

(compiled February 22, 2006)



Notes:

- (1) Statistics Canada estimate July 1
- (2) Annual average
- a Actual
- sa Seasonally adjusted
- p Preliminary
- pa Preliminary actual
- i Intention
- ri Revised intention

Data Sources:

Population, Vital Statistics, Migration - Statistics Canada, Demographic Estimates Section, Quarterly Demographic Statistics, Catalogue No. 91-002

Labour Force - Statistics Canada, Labour Statistics Division, Labour Force Survey, monthly Catalogue No. 71-001-XIE; Labour Force Historical Review, Catalogue No. 71F0004XCB

Employment Insurance - Statistics Canada, Labour Statistics Division, Employment Insurance Statistics, monthly

Consumer Price Index - Statistics Canada, Prices Division, The Consumer Price Index, Catalogue 62-001

Income (Personal Income per Capita, Total Wages & Salaries, Average Weekly Wages) - Statistics Canada, System of National Accounts, Provincial Economic Accounts, quarterly, Catalogue No. 13-213-PPB; Estimates of Labour Income, quarterly, Catalogue No. 13F0016; Employment, Earnings & Hours, monthly, Catalogue No. 72-002

Retail/Wholesale - Statistics Canada, Retail Trade, monthly, Catalogue No. 63-005; New Motor Vehicle Sales, monthly, Catalogue No. 63-007; Wholesale Trade, monthly, Catalogue No. 63-008

Commodity Sector - Statistics Canada, Farm Cash Receipts, quarterly, Catalogue No. 21-001; Sawmills & Planing Mills, monthly, Catalogue No. 35-003; Canada's Mineral Production, annual, Catalogue No. 26-202; Natural Gas Transportation and Distribution, monthly, Catalogue No. 55-002; Electric Power Statistics, monthly, Catalogue No. 57-001; Fisheries & Oceans Canada statistics, annual monthly, Catalogue No. 57-001; Monthly Survey of Manufacturing Shipments, CANSIM Tables 304-0014 and 304-0015; Canadian International Merchandise Trade, monthly, Catalogue No. 65-001

Construction - Statistics Canada, Private and Public Investment in Canada, annual, Catalogue Nos. 61-205; Building Permits, monthly, Catalogue No.64-001; Canada Mortgage and Housing statistics, monthly/quarterly

Gross Domestic Product - Statistics Canada, System of National Accounts, Provincial Economic Accounts, Catalogue No. 13-213-PPB

NOVA SCOTIA ECONOMIC INDICATORS

INDICATOR	Current Reference Period	MONTHLY/QUARTERLY/YEAR-TO-DATE STATISTICS					ANNUAL STATISTICS				
		% Change					Year-over-Year % Change				
		Reference Period									
		2 Years Ago	1 Year Ago	Current	1 Year Ago/ 2 Years Ago	Current/ 1 Year Ago	2003	2004	2005	2004/2003	2005/2004
POPULATION	Oct 1/2005	937,133	938,821	938,116	0.2	(0.1)	936,302 (1)	937,509 (1)	937,889 (1)	0.1	0.0
VITAL STATISTICS											
Births	July-Sept/2005	2,332	2,319	2,297	(0.6)	(0.9)	8,650	8,605	-- --	(0.5)	-- --
Deaths	July-Sept/2005	1,949	1,989	2,009	2.1	1.0	8,191	8,336	-- --	1.8	-- --
Marriages	July-Sept/2005	2,458	2,450	2,441	(0.3)	(0.4)	4,878	4,862	-- --	(0.3)	-- --
MIGRATION											
Total Net Migration	July-Sept/2005	448	982	(61)	119.2	-- --	1,647	351	-- --	(78.7)	-- --
Net Interprovincial	July-Sept/2005	(179)	432	(962)	-- --	-- --	427	(954)	-- --	-- --	-- --
Net International	July-Sept/2005	627	550	901	(12.3)	63.8	1,220	1,305	-- --	7.0	-- --
Immigration	July-Sept/2005	465	546	677	17.4	24.0	1,476	1,770	-- --	19.9	-- --
Emigration	July-Sept/2005	(162)	(4)	(224)	-- --	-- --	256	465	-- --	81.6	-- --
LABOUR FORCE											
Seasonally Adjusted											
Total Labour Force ('000)	Jan/2006	479.7	487.0	480.4	1.5	(1.4)	474.6	485.0	483.9	2.2	(0.2)
Employed ('000)	Jan/2006	435.9	444.9	442.8	2.1	(0.5)	431.2	442.2	443.1	2.6	0.2
Goods Industries ('000)	Jan/2006	93.6	93.3	88.8	(0.3)	(4.8)	92.4	93.7	91.2	1.4	(2.7)
Service Industries ('000)	Jan/2006	342.2	351.7	354.0	2.8	0.7	338.8	348.5	351.9	2.9	1.0
Unemployment ('000)	Jan/2006	43.8	42.1	37.6	(3.9)	(10.7)	43.4	42.8	40.8	(1.4)	(4.7)
Unemployment Rate (%)	Jan/2006	9.1	8.6	7.8	-- --	-- --	9.1	8.8	8.4	-- --	-- --
Participation Rate (%)	Jan/2006	63.5	64.1	63.0	-- --	-- --	63.1	64.1	63.6	-- --	-- --
Actual											
Employed ('000)	Jan/2006	417.7	426.8	425.0	2.2	(0.4)	431.2	442.2	443.1	2.6	0.2
Unemployment Rate (%)	Jan/2006	10.5	9.9	9.0	-- --	-- --	9.1	8.8	8.4	-- --	-- --

NOVA SCOTIA ECONOMIC INDICATORS

INDICATOR	Current Reference Period	MONTHLY/QUARTERLY/YEAR-TO-DATE STATISTICS					ANNUAL STATISTICS				
		% Change					Year-over-Year % Change				
		Reference Period		Current			2 Years Ago		1 Year Ago		2004/2003
		2 Years Ago	1 Year Ago	Current	2 Years Ago	1 Year Ago	2003	2004	2005	2004/2003	2005/2004
EMPLOYMENT INSURANCE BENEFITS (EI)											
Total Beneficiaries (#)	Dec/2005	40,180	40,170	40,020	(0.0)	(0.4)	40,698 (2)	40,941 (2)	40,793 (2)	0.6	--
Total Benefits Paid (\$'000)	Dec/2005	58,693	54,337	58,710	(7.4)	8.0	680,374	678,533	692,344	(0.3)	--
CONSUMER PRICE INDEX (1992=100)											
Nova Scotia											
All-Items	Jan/2006	123.6	127.0	130.9	2.8	3.1	123.9	126.1	129.6	1.8	2.8
Food	Jan/2006	122.9	128.0	131.4	4.1	2.7	122.5	125.3	129.2	2.3	3.1
Shelter	Jan/2006	123.6	128.0	133.4	3.6	4.2	122.3	125.4	130.9	2.5	4.4
INCOME											
Personal Income Per Capita (\$)	2004	25,418	26,113	26,905	2.7	3.0	26,113	26,905	--	3.0	--
Total Wages & Salaries (\$ millions)	Jan-Sept/2005	9,706.4	9,963.4	10,490.7	2.6	5.3	12,997.2	13,368.9	--	2.9	--
Average Weekly Wages & Salaries (\$)	Oct/2005	594.75	610.84	646.17	2.7	5.8	597.08	611.93	--	2.5	--
RETAIL/WHOLESALE TRADE											
All Retail Outlets (\$ millions) (sa)	Jan-Dec/2005	10,014.9	10,296.5	10,607.5	2.8	3.0	10,014.9	10,296.5	10,607.5	2.8	3.0
Dept. Store Sales (\$ millions) (a)	Jan-Nov/2005	593.1	623.1	650.1	5.1	4.3	710.2	744.2	--	4.8	--
New Motor Vehicle Sales (\$ millions) (a)	Jan-Dec/2005	1,313.1	1,282.2	1,383.1	(2.4)	7.9	1,313.1	1,282.2	1,383.1	(2.4)	7.9
Wholesale Trade (\$millions) (sa)	Jan-Dec/2005	6,854.3	6,266.7	6,242.6	(8.6)	(0.4)	6,854.3	6,266.7	6,242.6	(8.6)	-0.4

NOVA SCOTIA ECONOMIC INDICATORS

INDICATOR	Current Reference Period	MONTHLY/QUARTERLY/YEAR-TO-DATE STATISTICS					ANNUAL STATISTICS				
		% Change					Year-over-Year % Change				
		2 Years Ago	1 Year Ago	Current	Reference Period		2003	2004	2005	2004/2003	2005/2003
			1 Year Ago/	Current/							
COMMODITY SECTORS											
Farm Cash Receipts (\$ millions)	Jan-Sept/2005	304.8	331.7	340.2	8.8	2.6	424.8	451.4	---	6.3	---
Fish Landings (\$ millions)	Jan-Dec/2004	801.1	825.9	697.6 p	3.1	(15.5)	825.9	697.6 p	---	(15.5)	---
Lumber Production (000m3)	Jan-Nov/2005	1,536.3	1,610.3	1,452.9	4.8	(9.8)	1,648.4	1,750.7	---	6.2	---
Mineral Production ⁽¹⁾ (\$ millions)	2004	--	263.2	278.3	---	5.7	263.2	278.3	---	---	---
Marketable Gas Receipts (million m3)	Jan-May/2005	1,903.0	1,868.6	1,571.7	(1.8)	(15.9)	4,469.5	4,174.1	---	(6.6)	---
Power Generation (GW.h)	Jan-Oct/2005	10,234.2	10,288.3	10,177.1	0.5	(1.1)	12,386.9	12,563.8	---	1.4	---
Manufacturing Shipments (\$ millions)	Jan-Nov/2005	7,937.7	8,527.4	9,021.8	7.4	5.8	8,642.5	9,281.1	---	7.4	---
Foreign Exports (\$ millions)	Jan-Nov/2005	4,900.3	5,042.1	5,061.0	2.9	0.4	5,349.3	5,479.1	---	2.4	---
Foreign Imports (\$ millions)	Jan-Nov/2005	5,376.5	5,951.4	6,501.1	10.7	9.2	5,783.9	6,588.4	---	13.9	---
CONSTRUCTION											
Capital Construction											
Expenditures (\$ millions)	2006	3,662.0	3,699.5 pa	4,176.8 l	1.0	12.9	3,441.9	3,662.0 pa	3,699.5 pa	6.4	1.0
Building Permits (\$ millions)	Jan-Nov/2005	965.9	1,071.1	1,123.8 p	10.9	4.9	1,014.1	1,125.8	---	11.0	---
Housing Starts Centres 10,000+											
Starts (units)	Jan-Sept/2005	2,486	2,455	2,441	(1.2)	(0.6)	3,589	3,313	---	(7.7)	---
Completions (units)	Jan-Sept/2005	2,615	2,250	1,783	(14.0)	(20.8)	3,634	3,526	---	(3.0)	---
All Areas											
Starts (units)	Jan-Sept/2005	3,568	3,474	3,515	(2.6)	1.2	5,096	4,717	---	(7.4)	---
Completions (units)	Jan-Sept/2005	3,733	3,110	2,660	(16.7)	(14.5)	5,434	4,896	---	(9.9)	---
Under Construction (units)	Sept 30/2005	2,977	3,199	3,441	7.5	7.6	2,770	2,653	---	(4.2)	---
GROSS DOMESTIC PRODUCT											
Real GDP (chained '97 \$ millions)	2004	24,702	24,925	25,271	0.9	1.4	24,925	25,271	---	1.4	---

⁽¹⁾ Excludes oil and gas.

CANADA ECONOMIC INDICATORS

INDICATOR	Current Reference Period	MONTHLY/QUARTERLY/YEAR-TO-DATE STATISTICS					ANNUAL STATISTICS				
		% Change					Year-over-Year % Change				
		Reference Period									
		2 Years Ago	1 Year Ago	Current	1 Year Ago/ 2 Years Ago	Current/ 1 Year Ago	2003	2004	2005	2004/2003	2005/2004
POPULATION	Oct 1/2005	31,761,723	32,069,999	32,378,122	1.0	1.0	31,669,150 (1)	31,974,363 (1)	32,270,507 (1)	1.0	0.9
VITAL STATISTICS											
Births	July-Sept/2005	88,856	88,858	90,070	0.0	1.4	335,202	336,003	-- --	0.2	-- --
Deaths	July-Sept/2005	53,979	54,517	54,895	1.0	0.7	227,285	232,176	-- --	2.2	-- --
Marriages	July-Sept/2005	17,119	67,858	70,837	296.4	4.4	145,048	146,377	-- --	0.9	-- --
MIGRATION											
Total Net Migration	July-Sept/2005	57,796	61,295	72,440	6.1	18.2	196,070	197,500	-- --	0.7	-- --
Immigration	July-Sept/2005	63,349	65,578	75,975	3.5	15.9	229,071	235,826	-- --	2.9	-- --
Emigration	July-Sept/2005	5,553	4,283	3,535	(22.9)	(17.5)	25,332	38,326	-- --	51.3	-- --
LABOUR FORCE											
Seasonally Adjusted											
Total Labour Force ('000)	Jan/2006	17,103.4	17,255.0	17,473.5	0.9	1.3	16,958.5	17,182.3	17,342.6	1.3	0.9
Employed ('000)	Jan/2006	15,846.4	16,051.7	16,321.0	1.3	1.7	15,672.3	15,947.0	16,169.7	1.8	1.4
Goods Industries ('000)	Jan/2006	3,942.8	4,014.9	3,971.5	1.8	(1.1)	3,925.7	3,989.8	4,002.4	1.6	0.3
Service Industries ('000)	Jan/2006	11,903.6	12,036.8	12,349.5	1.1	2.6	11,746.6	11,957.2	12,167.3	1.8	1.8
Unemployment ('000)	Jan/2006	1,257.0	1,203.3	1,152.5	(4.3)	(4.2)	1,286.2	1,235.3	1,172.8	(4.0)	(5.1)
Unemployment Rate (%)	Jan/2006	7.3	7.0	6.6	-- --	-- --	7.6	7.2	6.8	-- --	-- --
Participation Rate (%)	Jan/2006	67.6	67.3	67.2	-- --	-- --	67.5	67.5	67.2	-- --	-- --
Actual											
Employed ('000)	Jan/2006	15,470.5	15,678.1	15,949.1	1.3	1.7	15,672.3	15,947.0	16,169.7	1.8	1.4
Unemployment Rate (%)	Jan/2006	7.9	7.5	7.2	-- --	-- --	7.6	7.2	6.7	-- --	-- --

CANADA ECONOMIC INDICATORS

INDICATOR	Current Reference Period	MONTHLY/QUARTERLY/YEAR-TO-DATE STATISTICS					ANNUAL STATISTICS					
		2 Years Ago	1 Year Ago	Current	% Change		2003	2004	2005	Year-over-Year % Change		
					1 Year Ago/ 2 Years Ago	Current/ 1 Year Ago				2004/2003	2004/2003	
EMPLOYMENT INSURANCE BENEFITS (EI)												
Total Beneficiaries (#)	Dec/2005	804,790	758,820	812,680	p	(5.7)	7.1	841,279 (2)	826,525 (2)	803,826 (2)	(1.8)	--
Total Benefits Paid (\$'000)	Dec/2005	1,287,267	1,115,770	1,153,624		(13.3)	3.4	14,950,569	14,970,341	14,692,519	0.1	--
CONSUMER PRICE INDEX (1992=100)												
Canada												
All-Items	Jan/2006	122.9	125.3	128.8		2.0	2.8	122.3	124.6	127.3	1.9	2.2
Food	Jan/2006	123.7	126.8	130.4		2.5	2.8	122.4	124.9	128.0	2.0	2.5
Shelter	Jan/2006	118.7	122.4	127.2		3.1	3.9	117.5	120.5	124.2	2.6	3.1
INCOME												
Personal Income Per Capita (\$)	2004	28,664	29,369	30,343		2.5	3.3	29,369	30,343	--	3.3	--
Total Wages & Salaries (\$ millions)	Jan-Sept/2005	404,764.3	420,583.0	441,437.9		3.9	5.0	541,741.1	563,149.2	--	4.0	--
Average Weekly Wages & Salaries (\$)	Oct/2005	692.32	706.83	737.56		2.1	4.3	690.35	705.68	--	2.2	--
RETAIL/WHOLESALE TRADE												
All Retail Outlets (\$ millions) (sa)	Jan-Dec/2005	331,143.1	346,721.5	368,436.4		4.7	6.3	331,143.4	346,721.5	368,436.4	4.7	6.3
Dept. Store Sales (\$ millions) (a)	Jan-Nov/2005	18,491.5	19,553.9	19,553.9		5.7	0.0	21,681.2	22,832.4	--	5.3	--
New Motor Vehicle Sales (\$ millions) (a)	Jan-Dec/2005	50,493.3	49,639.2	52,512.2		(1.7)	5.8	50,493.3	49,639.2	52,512.2	(1.7)	5.8
Wholesale Trade (\$millions) (sa)	Jan-Dec/2005	418,810.2	446,210.0	471,626.2		6.5	5.7	418,810.2	446,210.0	471,626.2	6.5	5.7

CANADA ECONOMIC INDICATORS

INDICATOR	Current Reference Period	MONTHLY/QUARTERLY/YEAR-TO-DATE STATISTICS					ANNUAL STATISTICS				
		% Change					Year-over-Year % Change				
		2 Years Ago	1 Year Ago	Current	Reference Period		2003	2004	2005	2004/2003	2005/2004
			1 Year Ago/	Current/							
COMMODITY SECTORS											
Farm Cash Receipts (\$ millions)	Jan-Sept/2005	24,647.3	26,522.7	27,355.2	7.6	3.1	34,360.0	36,521.3	--	6.3	--
Fish Landings (\$ millions)	Jan-Dec/2004	2,177.0	2,231.4	2,177.6 p	2.5	(2.4)	2,231.4	2,177.6 p	--	(2.4)	--
Lumber Production (000m3)	Jan-Nov/2005	73,666.2	78,212.3	76,877.4	6.2	(1.7)	79,319.3	84,589.6	--	6.6	--
Mineral Production ⁽¹⁾ (\$ millions)	2004	19,918.0	20,077.2	24,167.6	0.8	20.4	20,077.2	24,167.6	--	20.4	--
Marketable Gas Receipts (million m3)	Jan-May/2005	70,937.2	70,860.0	71,407.8	(0.1)	0.8	166,395.6	167,283.0	--	0.5	--
Power Generation (GW.h)	Jan-Oct/2005	465,527.4	464,350.0	487,664.9	(0.3)	5.0	564,218.5	568,719.4	--	0.8	--
Manufacturing Shipments (\$ millions)	Jan-Nov/2005	503,701.6	546,989.1	563,251.9	8.6	3.0	546,770.2	593,452.5	--	8.5	--
Foreign Exports (\$ millions)	Jan-Nov/2005	325,671.2	354,416.6	371,603.4	8.8	4.8	354,098.0	385,033.5	--	8.7	--
Foreign Imports (\$ millions)	Jan-Nov/2005	309,758.8	327,100.5	349,488.1	5.6	6.8	335,962.3	355,710.9	--	5.9	--
CONSTRUCTION											
Capital Construction											
Expenditures (\$ millions)	2006	154,125.2	167,838.4 pa	179,590.5 i	8.9	7.0	136,763.6	154,125.2 pε	167,838.4 i	12.7	8.9
Building Permits (\$ millions)	Jan-Nov/2005	47,324.7	51,732.4	55,704.0	9.3	7.7	50,772.0	55,578.6	--	9.5	--
Housing Starts Centres 10,000+											
Starts (units)	Jan-Sept/2005	140,860	151,411	144,254	7.5	(4.7)	191,907	204,392	--	6.5	--
Completions (units)	Jan-Sept/2005	126,563	135,724	138,909	7.2	2.3	173,956	188,345	--	8.3	--
All Areas											
Starts (units)	Jan-Sept/2005	160,191	172,514	167,076	7.7	(3.2)	218,426	233,431	--	6.9	--
Completions (units)	Jan-Sept/2005	144,263	155,586	156,836	7.8	0.8	199,244	215,621	--	8.2	--
Under Construction (units)	Sept 30/2005	134,849	154,284	164,059	14.4	6.3	137,774	155,230	--	12.7	--
GROSS DOMESTIC PRODUCT											
Real GDP (chained '97 \$ millions)	2004	1,070,789	1,092,388	1,124,428	2.0	2.9	1,092,388	1,124,428	--	2.9	--

⁽¹⁾ Excludes oil and gas.