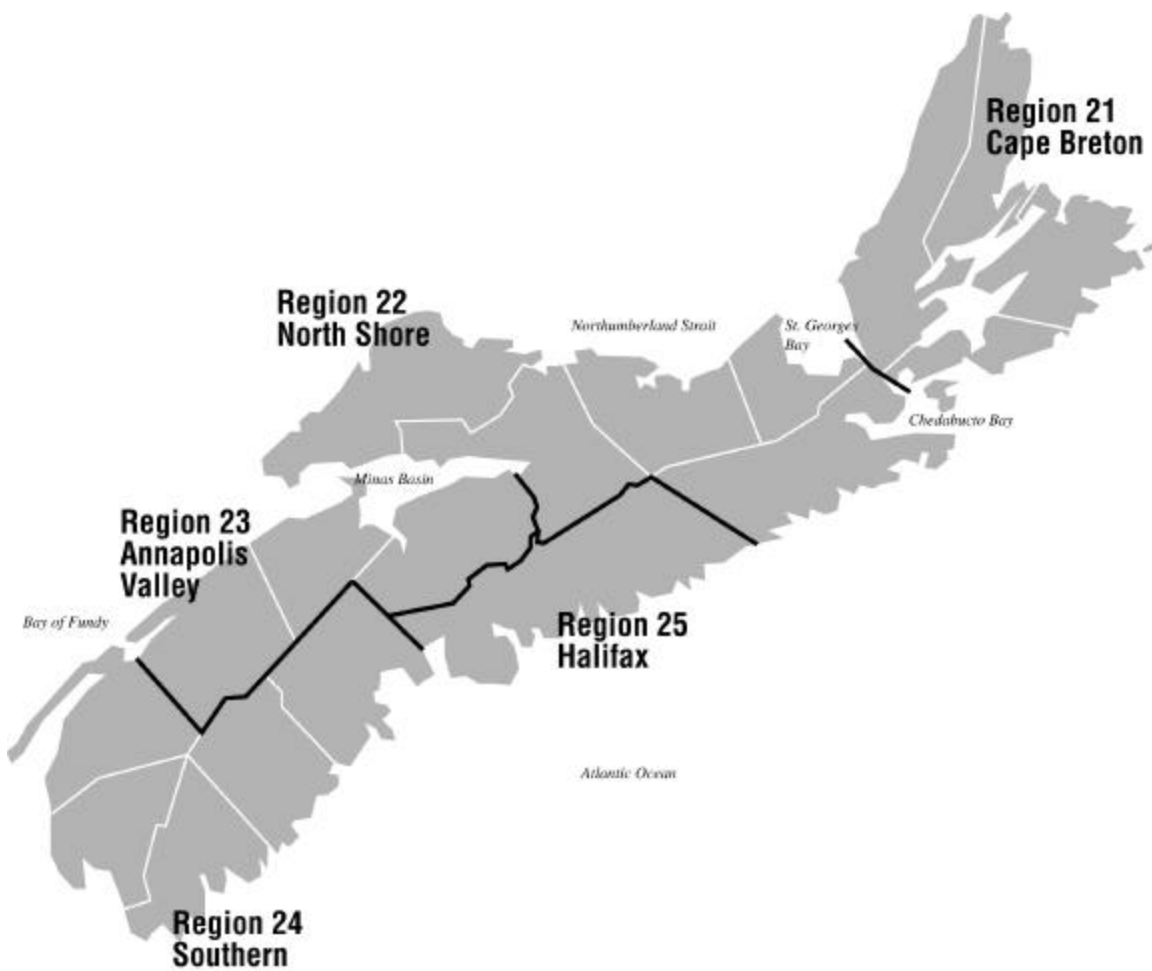


# Employment Situation MAY 2005



## About the Employment Situation Report

The Employment Situation Report is produced monthly by the Statistics Division of the Nova Scotia Department of Finance. It is based on the Labour Force Survey (LFS) which is a household survey carried out monthly by Statistics Canada. This publication contains summary tables of selected labour force characteristics including labour force, employment, unemployment, unemployment rate, and participation rate for Canada, the provinces, and CMAs. The publication emphasizes the Nova Scotia employment situation and includes tables for Nova Scotia, its economic regions, and the Metropolitan Halifax area. The report is available on the internet at:

<http://www.gov.ns.ca/finance/publish/pub19.htm>

The LFS survey is a sample of individuals who are representative of the civilian, non-institutionalised population 15 years of age or older in Canada's ten provinces. Specifically excluded from the survey's coverage are residents of the territories, persons living on Indian Reserves, full-time members of the Canadian Armed Forces and institutional residents. These groups represent an exclusion of approximately 2% of the population aged 15 or over. As of April 2005 the sample size has been approximately 51,072 households across Canada and 2,873 in Nova Scotia.

Since its inception in 1945, the objectives of the LFS have been to divide the working-age population into three mutually exclusive classifications--employed, unemployed and not in the labour force--and to provide descriptive and explanatory data on each of these categories. Data from the survey provide information on major labour market trends such as shifts in employment across industrial sectors, hours worked, labour force participation and employment rates.

### Release Dates - 2005:

<b>Data for:</b>	<b>Release date:</b>
January 2005	February 4, 2005
February 2005	March 11, 2005
March 2005	April 8, 2005
April 2005	May 6, 2005
May 2005	June 10, 2005
June 2005	July 8, 2005
July 2005	August 5, 2005
August 2005	September 9, 2005
September 2005	October 7, 2005
October 2005	November 4, 2005
November 2005	December 2, 2005

## Employment Situation - May 2005 Canada/Provinces

### Canada

	Actual				Seasonally Adjusted			Annual Change
	May 2004	Apr 2005	May 2005	Annual Change	May 2004	Apr 2005	May 2005	
Population ('000)	25,372.3	25,714.7	25,754.7	382.4	25,372.3	25,714.7	25,754.7	382.4
Labour Force ('000)	17,312.9	17,099.8	17,506.7	193.8	17,164.7	17,290.1	17,331.2	166.5
Employment ('000)	16,039.1	15,898.9	16,289.7	250.6	15,938.2	16,117.7	16,153.1	214.9
Unemployed ('000)	1,273.7	1,200.9	1,217.0	(56.7)	1,226.5	1,172.4	1,178.1	(48.4)
Unemployment Rate (%)	7.4	7.0	7.0	(0.4)	7.1	6.8	6.8	(0.3)
Participation Rate (%)	68.2	66.5	68.0	(0.2)	67.7	67.2	67.3	(0.4)
Employment Rate (%)	63.2	61.8	63.2	-	62.8	62.7	62.7	(0.1)

### Nova Scotia

	Actual				Seasonally Adjusted			Annual Change
	May 2004	Apr 2005	May 2005	Annual Change	May 2004	Apr 2005	May 2005	
Population ('000)	756.2	760.0	760.2	4.0	756.2	760.0	760.2	4.0
Labour Force ('000)	492.5	478.5	492.6	0.1	486.6	485.7	485.6	(1.0)
Employment ('000)	447.2	434.3	454.4	7.2	443.1	444.9	448.1	5.0
Unemployed ('000)	45.3	44.2	38.3	(7.0)	43.5	40.9	37.5	(6.0)
Unemployment Rate (%)	9.2	9.2	7.8	(1.4)	8.9	8.4	7.7	(1.2)
Participation Rate (%)	65.1	63.0	64.8	(0.3)	64.3	63.9	63.9	(0.4)
Employment Rate (%)	59.1	57.1	59.8	0.7	58.6	58.5	58.9	0.3

### Newfoundland and Labrador

	Actual				Seasonally Adjusted			Annual Change
	May 2004	Apr 2005	May 2005	Annual Change	May 2004	Apr 2005	May 2005	
Population ('000)	429.1	430.3	429.9	0.8	429.1	430.3	429.9	0.8
Labour Force ('000)	265.3	246.3	257.6	(7.7)	257.1	252.9	249.8	(7.3)
Employment ('000)	218.8	200.0	214.8	(4.0)	216.2	212.2	211.8	(4.4)
Unemployed ('000)	46.5	46.3	42.9	(3.6)	40.9	40.7	38.0	(2.9)
Unemployment Rate (%)	17.5	18.8	16.7	(0.8)	15.9	16.1	15.2	(0.7)
Participation Rate (%)	61.8	57.2	59.9	(1.9)	59.9	58.8	58.1	(1.8)
Employment Rate (%)	51.0	46.5	50.0	(1.0)	50.4	49.3	49.3	(1.1)

### Prince Edward Island

	Actual				Seasonally Adjusted			Annual Change
	May 2004	Apr 2005	May 2005	Annual Change	May 2004	Apr 2005	May 2005	
Population ('000)	110.9	111.4	111.4	0.5	110.9	111.4	111.4	0.5
Labour Force ('000)	76.9	74.5	77.9	1.0	74.9	76.0	75.6	0.7
Employment ('000)	68.8	63.2	70.4	1.6	65.8	68.1	67.5	1.7
Unemployed ('000)	8.1	11.3	7.5	(0.6)	9.1	7.9	8.2	(0.9)
Unemployment Rate (%)	10.5	15.2	9.6	(0.9)	12.1	10.4	10.8	(1.3)
Participation Rate (%)	69.3	66.9	69.9	0.6	67.5	68.2	67.9	0.4
Employment Rate (%)	62.0	56.7	63.2	1.2	59.3	61.1	60.6	1.3

Population is for those 15 years of age and over.

Annual Change is in thousands or percentage points as shown in row headings.

## Employment Situation - May 2005 Canada/Provinces

### New Brunswick

	Actual				Seasonally Adjusted			Annual Change
	May 2004	Apr 2005	May 2005	Annual Change	May 2004	Apr 2005	May 2005	
Population ('000)	606.9	610.0	610.2	3.3	606.9	610.0	610.2	3.3
Labour Force ('000)	396.4	378.7	397.0	0.6	389.4	386.8	388.8	(0.6)
Employment ('000)	352.9	336.2	359.0	6.1	351.1	350.9	354.6	3.5
Unemployed ('000)	43.5	42.5	38.1	(5.4)	38.3	35.9	34.2	(4.1)
Unemployment Rate (%)	11.0	11.2	9.6	(1.4)	9.8	9.3	8.8	(1.0)
Participation Rate (%)	65.3	62.1	65.1	(0.2)	64.2	63.4	63.7	(0.5)
Employment Rate (%)	58.1	55.1	58.8	0.7	57.9	57.5	58.1	0.2

### Quebec

	Actual				Seasonally Adjusted			Annual Change
	May 2004	Apr 2005	May 2005	Annual Change	May 2004	Apr 2005	May 2005	
Population ('000)	6,098.2	6,165.7	6,173.2	75.0	6,098.2	6,165.7	6,173.2	75.0
Labour Force ('000)	4,041.7	3,990.3	4,045.2	3.5	4,013.3	4,021.6	4,017.2	3.9
Employment ('000)	3,718.6	3,656.6	3,707.7	(10.9)	3,688.2	3,704.9	3,677.6	(10.6)
Unemployed ('000)	323.1	333.7	337.5	14.4	325.1	316.7	339.5	14.4
Unemployment Rate (%)	8.0	8.4	8.3	0.3	8.1	7.9	8.5	0.4
Participation Rate (%)	66.3	64.7	65.5	(0.8)	65.8	65.2	65.1	(0.7)
Employment Rate (%)	61.0	59.3	60.1	(0.9)	60.5	60.1	59.6	(0.9)

### Ontario

	Actual				Seasonally Adjusted			Annual Change
	May 2004	Apr 2005	May 2005	Annual Change	May 2004	Apr 2005	May 2005	
Population ('000)	9,866.5	10,027.1	10,046.8	180.3	9,866.5	10,027.1	10,046.8	180.3
Labour Force ('000)	6,845.0	6,762.3	6,960.1	115.1	6,781.1	6,842.3	6,882.3	101.2
Employment ('000)	6,347.7	6,312.7	6,459.9	112.2	6,313.0	6,377.5	6,409.7	96.7
Unemployed ('000)	497.3	449.6	500.2	2.9	468.1	464.7	472.6	4.5
Unemployment Rate (%)	7.3	6.6	7.2	(0.1)	6.9	6.8	6.9	-
Participation Rate (%)	69.4	67.4	69.3	(0.1)	68.7	68.2	68.5	(0.2)
Employment Rate (%)	64.3	63.0	64.3	-	64.0	63.6	63.8	(0.2)

### Manitoba

	Actual				Seasonally Adjusted			Annual Change
	May 2004	Apr 2005	May 2005	Annual Change	May 2004	Apr 2005	May 2005	
Population ('000)	879.9	887.7	888.3	8.4	879.9	887.7	888.3	8.4
Labour Force ('000)	611.9	601.3	615.6	3.7	607.7	605.2	609.9	2.2
Employment ('000)	582.2	570.1	586.9	4.7	575.6	575.9	578.6	3.0
Unemployed ('000)	29.7	31.1	28.8	(0.9)	32.1	29.3	31.3	(0.8)
Unemployment Rate (%)	4.9	5.2	4.7	(0.2)	5.3	4.8	5.1	(0.2)
Participation Rate (%)	69.5	67.7	69.3	(0.2)	69.1	68.2	68.7	(0.4)
Employment Rate (%)	66.2	64.2	66.1	(0.1)	65.4	64.9	65.1	(0.3)

Population is for those 15 years of age and over.

Annual Change is in thousands or percentage points as shown in row headings.

## Employment Situation - May 2005 Canada/Provinces

### Saskatchewan

	Actual				Seasonally Adjusted			Annual Change
	May 2004	Apr 2005	May 2005	Annual Change	May 2004	Apr 2005	May 2005	
Population ('000)	744.6	748.5	748.5	3.9	744.6	748.5	748.5	3.9
Labour Force ('000)	510.9	504.1	516.9	6.0	504.3	510.8	507.9	3.6
Employment ('000)	486.1	476.2	494.2	8.1	479.6	485.2	484.9	5.3
Unemployed ('000)	24.9	27.9	22.7	(2.2)	24.7	25.6	23.0	(1.7)
Unemployment Rate (%)	4.9	5.5	4.4	(0.5)	4.9	5.0	4.5	(0.4)
Participation Rate (%)	68.6	67.3	69.1	0.5	67.7	68.2	67.9	0.2
Employment Rate (%)	65.3	63.6	66.0	0.7	64.4	64.8	64.8	0.4

### Alberta

	Actual				Seasonally Adjusted			Annual Change
	May 2004	Apr 2005	May 2005	Annual Change	May 2004	Apr 2005	May 2005	
Population ('000)	2,498.8	2,540.5	2,546.8	48.0	2,498.8	2,540.5	2,546.8	48.0
Labour Force ('000)	1,850.1	1,835.6	1,869.5	19.4	1,835.7	1,857.8	1,852.6	16.9
Employment ('000)	1,767.5	1,758.9	1,801.8	34.3	1,757.3	1,783.8	1,788.3	31.0
Unemployed ('000)	82.6	76.7	67.7	(14.9)	78.4	74.0	64.2	(14.2)
Unemployment Rate (%)	4.5	4.2	3.6	(0.9)	4.3	4.0	3.5	(0.8)
Participation Rate (%)	74.0	72.3	73.4	(0.6)	73.5	73.1	72.7	(0.8)
Employment Rate (%)	70.7	69.2	70.7	-	70.3	70.2	70.2	(0.1)

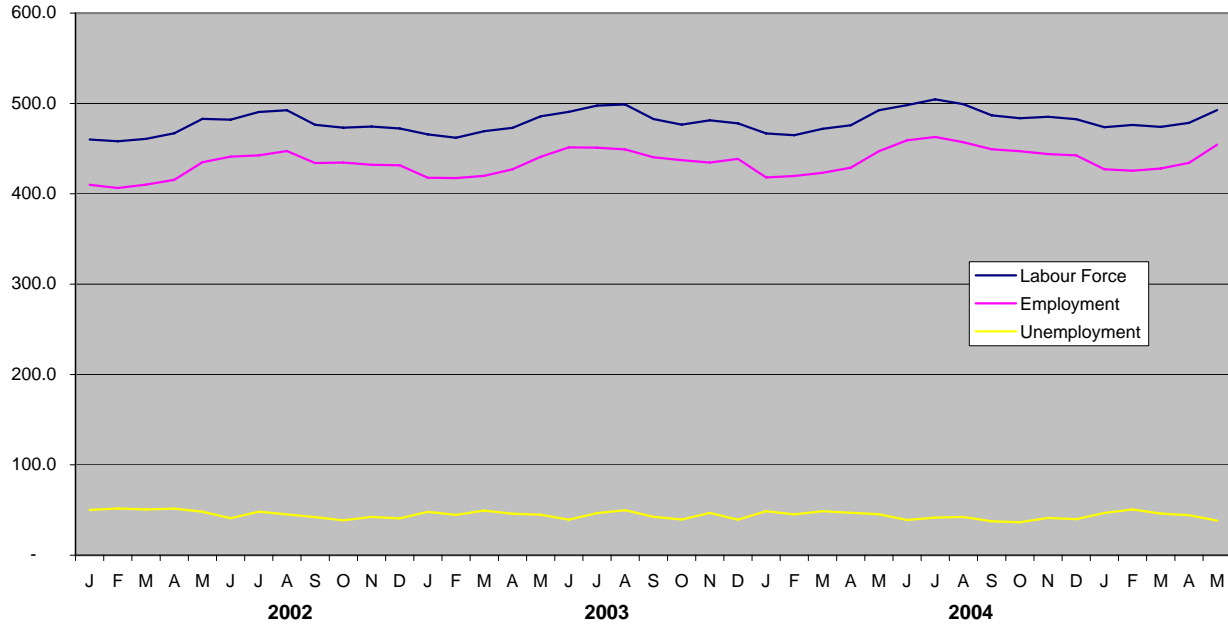
### British Columbia

	Actual				Seasonally Adjusted			Annual Change
	May 2004	Apr 2005	May 2005	Annual Change	May 2004	Apr 2005	May 2005	
Population ('000)	3,381.3	3,433.4	3,439.4	58.1	3,381.3	3,433.4	3,439.4	58.1
Labour Force ('000)	2,222.3	2,228.1	2,274.3	52.0	2,214.6	2,251.0	2,261.4	46.8
Employment ('000)	2,049.4	2,090.6	2,140.8	91.4	2,048.3	2,114.3	2,132.0	83.7
Unemployed ('000)	172.9	137.5	133.4	(39.5)	166.2	136.8	129.5	(36.7)
Unemployment Rate (%)	7.8	6.2	5.9	(1.9)	7.5	6.1	5.7	(1.8)
Participation Rate (%)	65.7	64.9	66.1	0.4	65.5	65.6	65.7	0.2
Employment Rate (%)	60.6	60.9	62.2	1.6	60.6	61.6	62.0	1.4

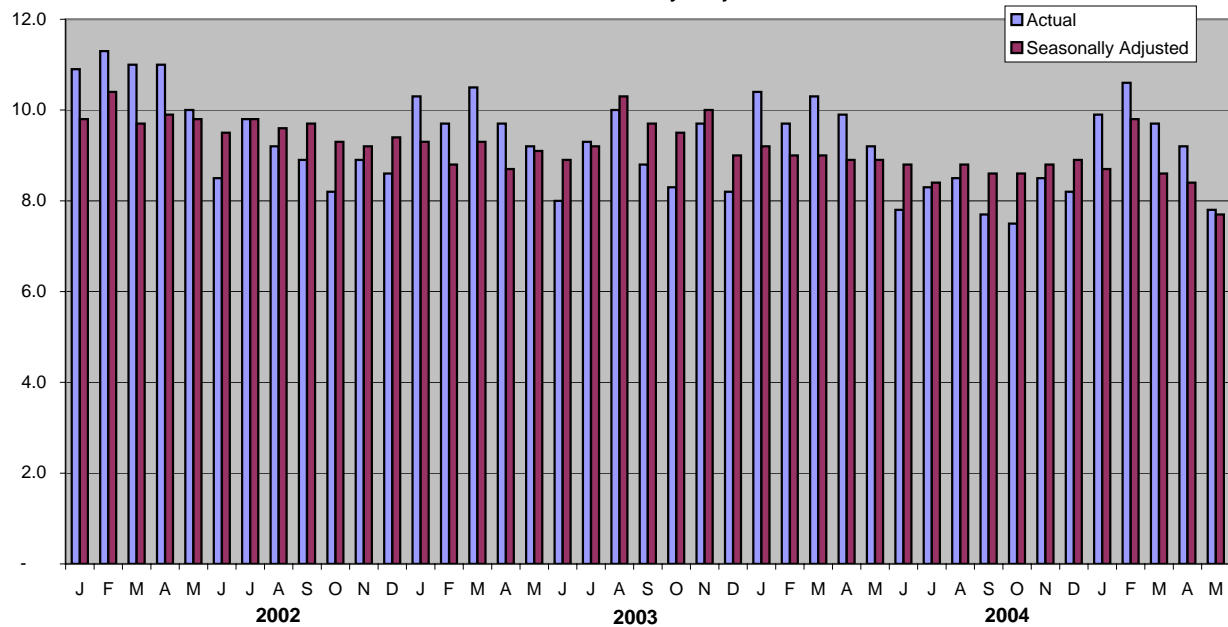
Population is for those 15 years of age and over.

Annual Change is in thousands or percentage points as shown in row headings.

**Nova Scotia Labour Force, Employment & Unemployment**  
 Actual 2002-2005



**Nova Scotia Unemployment Rate**  
 Actual & Seasonally Adjusted



**Employment Situation - May 2005**  
**Economic Regions/CMA**  
(unadjusted - three month moving average)

	Canada				Nova Scotia			
	May 2004	Apr 2005	May 2005	Annual Change	May 2004	Apr 2005	May 2005	Annual Change
Population ('000)	25,346.3	25,684.5	25,717.7	371.4	756.0	759.9	760.1	4.1
Labour Force ('000)	17,051.2	17,068.3	17,219.9	168.7	480.0	476.3	481.7	1.7
Employment ('000)	15,761.3	15,828.1	15,996.5	235.2	433.1	429.3	438.9	5.8
Unemployed ('000)	1,289.9	1,240.2	1,223.5	(66.4)	46.9	46.9	42.8	(4.1)
Unemployment Rate (%)	7.6	7.3	7.1	(0.5)	9.8	9.8	8.9	(0.9)
Participation Rate (%)	67.3	66.5	67.0	(0.3)	63.5	62.7	63.4	(0.1)
Employment Rate (%)	62.2	61.6	62.2	-	57.3	56.5	57.7	0.4

	230 - Annapolis Valley				210 - Cape Breton			
	May 2004	Apr 2005	May 2005	Annual Change	May 2004	Apr 2005	May 2005	Annual Change
Population ('000)	98.7	99.1	99.1	0.4	117.4	116.7	116.6	(0.8)
Labour Force ('000)	61.1	61.2	60.9	(0.2)	63.2	59.6	62.1	(1.1)
Employment ('000)	54.3	55.8	56.1	1.8	53.2	49.5	53.3	0.1
Unemployed ('000)	6.8	5.4	4.9	(1.9)	10.0	10.1	8.8	(1.2)
Unemployment Rate (%)	11.1	8.8	8.0	(3.1)	15.8	16.9	14.2	(1.6)
Participation Rate (%)	61.9	61.8	61.5	(0.4)	53.8	51.1	53.3	(0.5)
Employment Rate (%)	55.0	56.3	56.6	1.6	45.3	42.4	45.7	0.4

	250 - Halifax County				Halifax Metro (CMA)			
	May 2004	Apr 2005	May 2005	Annual Change	Jan 2004	Dec 2004	Jan 2005	Annual Change
Population ('000)	306.5	310.7	311.0	4.5	305.2	309.2	309.6	4.4
Labour Force ('000)	216.1	216.5	218.1	2.0	211.2	217.3	217.5	6.3
Employment ('000)	201.7	202.4	204.7	3.0	198.3	205.1	203.9	5.6
Unemployed ('000)	14.4	14.1	13.3	(1.1)	12.9	12.2	13.6	0.7
Unemployment Rate (%)	6.7	6.5	6.1	(0.6)	6.1	5.6	6.3	0.2
Participation Rate (%)	70.5	69.7	70.1	(0.4)	69.2	70.3	70.3	1.1
Employment Rate (%)	65.8	65.1	65.8	-	65.0	66.3	65.9	0.9

	220 - North Shore				240 - Southern			
	May 2004	Apr 2005	May 2005	Annual Change	May 2004	Apr 2005	May 2005	Annual Change
Population ('000)	130.3	130.3	130.3	-	103.0	103.1	103.1	0.1
Labour Force ('000)	78.3	79.0	80.5	2.2	61.4	60.0	60.1	(1.3)
Employment ('000)	69.3	69.5	71.6	2.3	54.7	52.1	53.2	(1.5)
Unemployed ('000)	9.0	9.5	8.9	(0.1)	6.7	7.8	6.9	0.2
Unemployment Rate (%)	11.5	12.0	11.1	(0.4)	10.9	13.0	11.5	0.6
Participation Rate (%)	60.1	60.6	61.8	1.7	59.6	58.2	58.3	(1.3)
Employment Rate (%)	53.2	53.3	55.0	1.8	53.1	50.5	51.6	(1.5)

**Employment Situation - May 2005**  
**Job Tenure**

**Employment - Seasonally Adjusted (000's)**

	<b>Total</b>				<b>Full-Time</b>				<b>Part-time</b>			
	May 2004	Apr 2005	May 2005	Annual	May 2004	Apr 2005	May 2005	Annual	May 2004	Apr 2005	May 2005	Annual
				Change				Change				Change
<b>Canada</b>	15,938.2	16,117.7	16,153.1	214.9	12,981.8	13,137.9	13,161.2	179.4	2,956.4	2,979.9	2,991.9	35.5
<b>Newfoundland and Labrador</b>	216.2	212.2	211.8	(4.4)	184.1	179.5	182.1	(2.0)	32.1	32.7	29.7	(2.4)
<b>Prince Edward Island</b>	65.8	68.1	67.5	1.7	55.4	56.0	55.6	0.2	10.3	12.1	11.9	1.6
<b>Nova Scotia</b>	443.1	444.9	448.1	5.0	358.7	359.6	360.6	1.9	84.4	85.3	87.5	3.1
<b>New Brunswick</b>	351.1	350.9	354.6	3.5	295.7	291.7	295.1	(0.6)	55.4	59.2	59.5	4.1
<b>Quebec</b>	3,688.2	3,704.9	3,677.6	(10.6)	3,007.8	3,045.9	3,013.9	6.1	680.4	659.0	663.8	(16.6)
<b>Ontario</b>	6,313.0	6,377.5	6,409.7	96.7	5,172.6	5,201.2	5,231.6	59.0	1,140.3	1,176.3	1,178.1	37.8
<b>Manitoba</b>	575.6	575.9	578.6	3.0	467.7	462.9	461.3	(6.4)	107.9	113.0	117.3	9.4
<b>Saskatchewan</b>	479.6	485.2	484.9	5.3	388.6	393.0	390.8	2.2	91.0	92.2	94.1	3.1
<b>Alberta</b>	1,757.3	1,783.8	1,788.3	31.0	1,442.5	1,466.6	1,466.5	24.0	314.8	317.2	321.8	7.0
<b>British Columbia</b>	2,048.3	2,114.3	2,132.0	83.7	1,608.7	1,681.3	1,704.1	95.4	439.6	433.0	427.8	(11.8)

**Employment - Actual (000's)**

	<b>Total</b>				<b>Full-Time</b>				<b>Part-time</b>			
	May 2004	Apr 2005	May 2005	Annual	May 2004	Apr 2005	May 2005	Annual	May 2004	Apr 2005	May 2005	Annual
				Change				Change				Change
<b>Canada</b>	16,039.1	15,898.9	16,289.7	250.6	13,088.1	12,876.5	13,320.0	231.9	2,951.0	3,022.4	2,969.8	18.8
<b>Newfoundland and Labrador</b>	218.8	200.0	214.8	(4.0)	185.1	166.8	183.8	(1.3)	33.7	33.2	30.9	(2.8)
<b>Prince Edward Island</b>	68.8	63.2	70.4	1.6	58.1	50.7	58.2	0.1	10.6	12.6	12.2	1.6
<b>Nova Scotia</b>	447.2	434.3	454.4	7.2	365.9	348.2	369.3	3.4	81.2	86.1	85.1	3.9
<b>New Brunswick</b>	352.9	336.2	359.0	6.1	297.0	275.3	298.9	1.9	55.9	60.9	60.1	4.2
<b>Quebec</b>	3,718.6	3,656.6	3,707.7	(10.9)	3,038.1	2,974.1	3,044.7	6.6	680.4	682.5	663.0	(17.4)
<b>Ontario</b>	6,347.7	6,312.7	6,459.9	112.2	5,208.0	5,139.5	5,291.7	83.7	1,139.8	1,173.3	1,168.2	28.4
<b>Manitoba</b>	582.2	570.1	586.9	4.7	473.9	454.5	469.1	(4.8)	108.3	115.6	117.8	9.5
<b>Saskatchewan</b>	486.1	476.2	494.2	8.1	397.0	384.4	401.5	4.5	89.1	91.8	92.7	3.6
<b>Alberta</b>	1,767.5	1,758.9	1,801.8	34.3	1,455.8	1,430.5	1,485.9	30.1	311.6	328.4	315.9	4.3
<b>British Columbia</b>	2,049.4	2,090.6	2,140.8	91.4	1,609.1	1,652.6	1,716.8	107.7	440.3	438.0	424.0	(16.3)



**Employment Situation - May 2005**  
**Youth Statistics**

**15-24 Age Group - Seasonally Adjusted**

	Labour Force - 000's				Employment - 000's				Unemployment - %			
	May 2004	Apr 2005	May 2005	Annual Change	May 2004	Apr 2005	May 2005	Annual Change	May 2004	Apr 2005	May 2005	Annual Change
<b>Canada</b>	2,849.2	2,799.7	2,821.2	(28.0)	2,460.1	2,455.2	2,467.5	7.4	13.7	12.3	12.5	(1.2)
<b>Newfoundland and Labrador</b>	40.2	39.1	38.0	(2.2)	30.9	30.7	30.3	(0.6)	23.1	21.5	20.0	(3.1)
<b>Prince Edward Island</b>	13.1	12.8	13.3	0.2	10.7	10.7	10.9	0.2	18.3	15.6	18.0	(0.3)
<b>Nova Scotia</b>	82.1	83.3	82.1	-	69.8	70.0	71.9	2.1	15.0	16.0	12.4	(2.6)
<b>New Brunswick</b>	66.4	63.8	63.1	(3.3)	56.0	54.6	54.3	(1.7)	15.7	14.4	13.8	(1.9)
<b>Quebec</b>	641.5	626.2	610.0	(31.5)	552.3	546.1	534.3	(18.0)	13.9	12.8	12.4	(1.5)
<b>Ontario</b>	1,110.6	1,074.2	1,101.4	(9.2)	948.7	933.1	933.0	(15.7)	14.6	13.1	15.3	0.7
<b>Manitoba</b>	110.4	108.9	111.2	0.8	98.0	98.6	100.0	2.0	11.2	9.5	10.1	(1.1)
<b>Saskatchewan</b>	94.3	96.2	94.7	0.4	85.6	86.0	85.3	(0.3)	9.3	10.6	9.9	0.6
<b>Alberta</b>	332.6	341.5	339.0	6.4	303.4	311.8	319.2	15.8	8.8	8.7	5.8	(3.0)
<b>British Columbia</b>	358.0	353.8	368.4	10.4	305.0	313.4	328.2	23.2	14.8	11.4	10.9	(3.9)

**15-24 Age Group - Actual**

	Labour Force - 000's				Employment - 000's				Unemployment - %			
	May 2004	Apr 2005	May 2005	Annual Change	May 2004	Apr 2005	May 2005	Annual Change	May 2004	Apr 2005	May 2005	Annual Change
<b>Canada</b>	2,936.0	2,631.2	2,939.2	3.2	2,480.6	2,296.7	2,522.3	41.7	15.5	12.7	14.2	(1.3)
<b>Newfoundland and Labrador</b>	41.7	34.2	39.2	(2.5)	28.9	26.0	29.1	0.2	30.5	24.0	25.8	(4.7)
<b>Prince Edward Island</b>	13.8	11.5	14.1	0.3	11.2	9.0	11.5	0.3	18.8	21.7	18.4	(0.4)
<b>Nova Scotia</b>	84.6	76.9	85.2	0.6	69.4	64.1	73.0	3.6	18.0	16.6	14.3	(3.7)
<b>New Brunswick</b>	68.9	58.2	67.1	(1.8)	55.7	48.5	55.9	0.2	19.3	16.7	16.7	(2.6)
<b>Quebec</b>	648.1	588.6	620.0	(28.1)	552.4	508.7	538.2	(14.2)	14.8	13.6	13.2	(1.6)
<b>Ontario</b>	1,161.2	1,004.9	1,166.9	5.7	962.0	871.8	958.8	(3.2)	17.2	13.2	17.8	0.6
<b>Manitoba</b>	112.6	104.4	115.0	2.4	100.0	94.0	104.0	4.0	11.2	10.0	9.5	(1.7)
<b>Saskatchewan</b>	98.1	90.7	100.5	2.4	87.4	80.1	89.5	2.1	10.9	11.7	10.9	-
<b>Alberta</b>	341.4	322.9	349.9	8.5	306.4	293.3	325.1	18.7	10.3	9.2	7.1	(3.2)
<b>British Columbia</b>	365.6	338.9	381.4	15.8	307.2	301.1	337.1	29.9	16.0	11.2	11.6	(4.4)



## Employment Situation - May 2005

### CMA Data

(Unadjusted - three month moving average)

	Unemployment Rate - %				Employment Rate - %				Participation Rate - %			
	May 2004	Apr 2005	May 2005	Annual Change	May 2004	Apr 2005	May 2005	Annual Change	May 2004	Apr 2005	May 2005	Annual Change
St. John's, Newfoundland and Labrador	8.3	9.1	9.5	1.2	60.6	60.6	60.6	-	66.1	66.7	66.9	0.8
Halifax	6.5	6.5	6.1	(0.4)	66.5	65.1	65.8	(0.7)	71.2	69.7	70.1	(1.1)
Saint John, New Brunswick	9.2	7.0	7.2	(2.0)	59.5	61.3	61.4	1.9	65.5	65.9	66.2	0.7
Saguenay	11.7	9.4	9.0	(2.7)	57.3	52.8	53.4	(3.9)	65.0	58.2	58.7	(6.3)
Québec	6.1	6.2	6.0	(0.1)	61.8	63.9	64.7	2.9	65.8	68.1	68.8	3.0
Trois-Rivières	11.4	10.6	10.4	(1.0)	54.2	57.7	59.1	4.9	61.1	64.6	65.9	4.8
Sherbrooke	6.2	7.9	7.8	1.6	61.8	60.0	61.0	(0.8)	65.8	65.2	66.1	0.3
Montréal	8.2	8.3	8.5	0.3	61.9	60.9	61.0	(0.9)	67.4	66.4	66.6	(0.8)
Ottawa-Gatineau	7.1	6.9	7.2	0.1	65.3	65.7	66.0	0.7	70.3	70.6	71.1	0.8
Sudbury	8.9	7.5	7.4	(1.5)	58.9	59.3	58.9	-	64.7	64.1	63.8	(0.9)
Oshawa	5.5	7.5	6.8	1.3	68.1	67.8	67.7	(0.4)	72.1	73.3	72.7	0.6
Toronto	7.7	7.4	7.5	(0.2)	64.5	63.3	64.1	(0.4)	69.9	68.4	69.3	(0.6)
Hamilton	7.6	5.6	5.6	(2.0)	63.7	61.2	61.7	(2.0)	68.9	64.8	65.4	(3.5)
St. Catharines - Niagara	8.6	8.0	7.6	(1.0)	56.1	58.4	58.4	2.3	61.4	63.5	63.3	1.9
London	5.7	7.0	7.3	1.6	64.2	65.1	65.3	1.1	68.2	69.9	70.4	2.2
Windsor	8.1	8.2	8.4	0.3	60.2	59.9	60.1	(0.1)	65.5	65.2	65.6	0.1
Kitchener	5.6	6.2	6.4	0.8	65.0	68.4	69.4	4.4	68.9	72.9	74.1	5.2
Thunder Bay	8.2	8.1	8.2	-	60.7	61.8	62.0	1.3	66.1	67.3	67.6	1.5
Winnipeg	5.2	5.1	5.1	(0.1)	67.0	65.4	65.5	(1.5)	70.7	69.0	69.0	(1.7)
Regina	5.1	4.6	4.5	(0.6)	69.4	68.2	68.4	(1.0)	73.3	71.5	71.7	(1.6)
Saskatoon	6.7	5.3	4.9	(1.8)	64.6	67.4	68.2	3.6	69.2	71.2	71.7	2.5
Calgary	5.1	3.7	3.4	(1.7)	71.2	70.3	71.2	-	75.0	73.0	73.7	(1.3)
Edmonton	4.9	4.7	4.6	(0.3)	68.9	66.5	66.9	(2.0)	72.4	69.7	70.1	(2.3)
Vancouver	7.2	6.3	6.0	(1.2)	62.6	63.2	63.4	0.8	67.4	67.4	67.5	0.1
Victoria	4.4	4.9	4.0	(0.4)	60.7	60.9	62.2	1.5	63.5	64.1	64.8	1.3