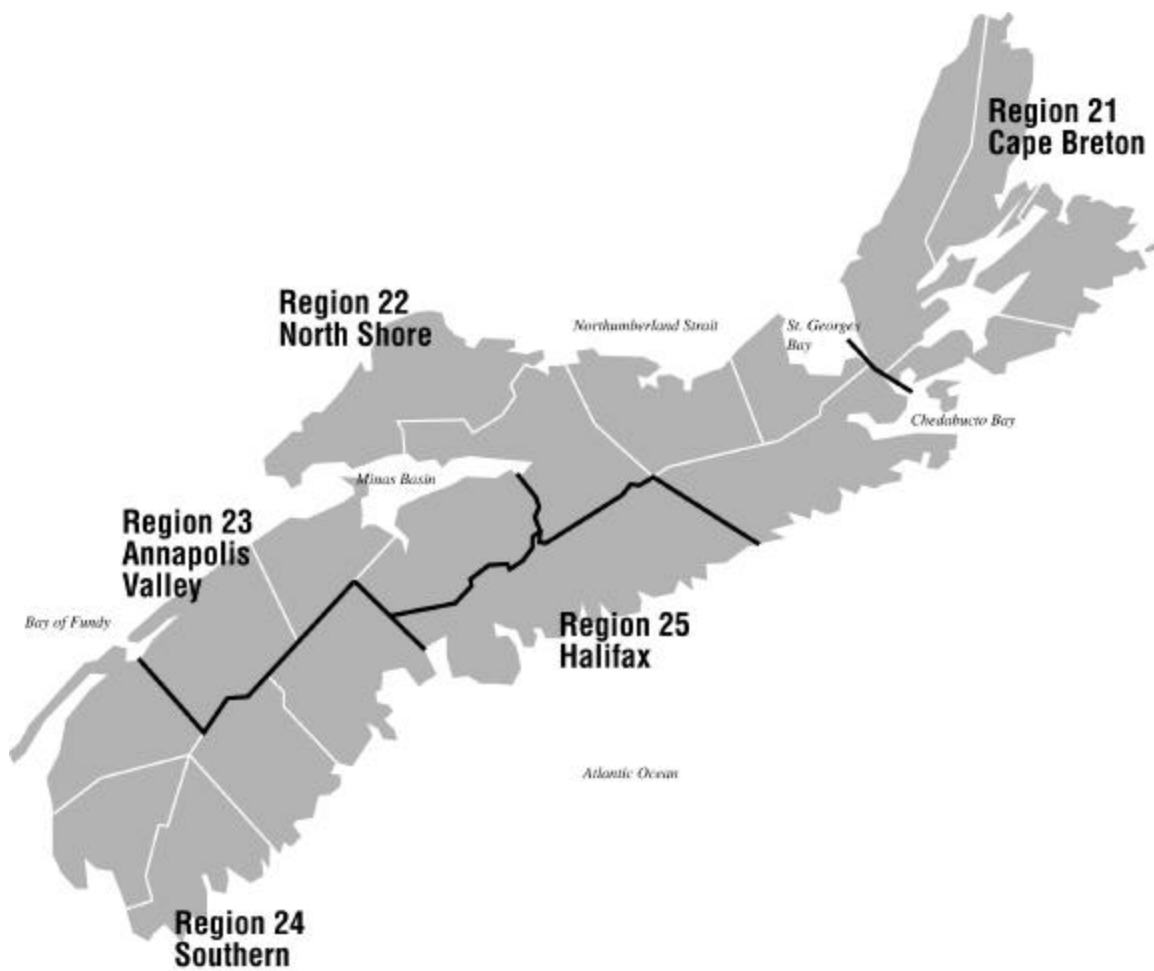


Employment Situation

JULY 2005



About the Employment Situation Report

The Employment Situation Report is produced monthly by the Statistics Division of the Nova Scotia Department of Finance. It is based on the Labour Force Survey (LFS) which is a household survey carried out monthly by Statistics Canada. This publication contains summary tables of selected labour force characteristics including labour force, employment, unemployment, unemployment rate, and participation rate for Canada, the provinces, and CMAs. The publication emphasizes the Nova Scotia employment situation and includes tables for Nova Scotia, its economic regions, and the Metropolitan Halifax area. The report is available on the internet at:

<http://www.gov.ns.ca/finance/publish/pub19.htm>

The LFS survey is a sample of individuals who are representative of the civilian, non-institutionalised population 15 years of age or older in Canada's ten provinces. Specifically excluded from the survey's coverage are residents of the territories, persons living on Indian Reserves, full-time members of the Canadian Armed Forces and institutional residents. These groups represent an exclusion of approximately 2% of the population aged 15 or over. As of April 2005 the sample size has been approximately 51,072 households across Canada and 2,873 in Nova Scotia.

Since its inception in 1945, the objectives of the LFS have been to divide the working-age population into three mutually exclusive classifications--employed, unemployed and not in the labour force--and to provide descriptive and explanatory data on each of these categories. Data from the survey provide information on major labour market trends such as shifts in employment across industrial sectors, hours worked, labour force participation and employment rates.

Release Dates - 2005:

Data for:

January 2005

February 2005

March 2005

April 2005

May 2005

June 2005

July 2005

August 2005

September 2005

October 2005

November 2005

Release date:

February 4, 2005

March 11, 2005

April 8, 2005

May 6, 2005

June 10, 2005

July 8, 2005

August 5, 2005

September 9, 2005

October 7, 2005

November 4, 2005

December 2, 2005

Employment Situation - July 2005 Canada/Provinces

Canada

	Actual				Seasonally Adjusted			Annual Change
	Jul 2004	Jun 2005	Jul 2005	Annual Change	Jul 2004	Jun 2005	Jul 2005	
Population ('000)	25,461.1	25,786.5	25,819.8	358.7	25,461.1	25,786.5	25,819.8	358.7
Labour Force ('000)	17,618.0	17,606.5	17,758.8	140.8	17,195.7	17,329.4	17,346.8	151.1
Employment ('000)	16,342.7	16,499.3	16,528.7	186.0	15,979.7	16,167.3	16,173.2	193.5
Unemployed ('000)	1,275.3	1,107.1	1,230.2	(45.1)	1,215.9	1,162.1	1,173.5	(42.4)
Unemployment Rate (%)	7.2	6.3	6.9	(0.3)	7.1	6.7	6.8	(0.3)
Participation Rate (%)	69.2	68.3	68.8	(0.4)	67.5	67.2	67.2	(0.3)
Employment Rate (%)	64.2	64.0	64.0	(0.2)	62.8	62.7	62.6	(0.2)

Nova Scotia

	Actual				Seasonally Adjusted			Annual Change
	Jul 2004	Jun 2005	Jul 2005	Annual Change	Jul 2004	Jun 2005	Jul 2005	
Population ('000)	757.2	760.4	760.5	3.3	757.2	760.4	760.5	3.3
Labour Force ('000)	504.6	496.0	496.2	(8.4)	486.5	485.0	479.3	(7.2)
Employment ('000)	462.9	457.7	458.3	(4.6)	445.8	443.2	441.4	(4.4)
Unemployed ('000)	41.7	38.3	37.9	(3.8)	40.7	41.8	37.8	(2.9)
Unemployment Rate (%)	8.3	7.7	7.6	(0.7)	8.4	8.6	7.9	(0.5)
Participation Rate (%)	66.6	65.2	65.2	(1.4)	64.2	63.8	63.0	(1.2)
Employment Rate (%)	61.1	60.2	60.3	(0.8)	58.9	58.3	58.0	(0.9)

Newfoundland and Labrador

	Actual				Seasonally Adjusted			Annual Change
	Jul 2004	Jun 2005	Jul 2005	Annual Change	Jul 2004	Jun 2005	Jul 2005	
Population ('000)	429.4	429.5	429.4	-	429.4	429.5	429.4	-
Labour Force ('000)	280.4	266.4	275.8	(4.6)	256.7	250.5	254.1	(2.6)
Employment ('000)	245.6	233.1	242.5	(3.1)	219.6	215.6	217.6	(2.0)
Unemployed ('000)	34.8	33.3	33.4	(1.4)	37.1	34.9	36.5	(0.6)
Unemployment Rate (%)	12.4	12.5	12.1	(0.3)	14.5	13.9	14.4	(0.1)
Participation Rate (%)	65.3	62.0	64.2	(1.1)	59.8	58.3	59.2	(0.6)
Employment Rate (%)	57.2	54.3	56.5	(0.7)	51.1	50.2	50.7	(0.4)

Prince Edward Island

	Actual				Seasonally Adjusted			Annual Change
	Jul 2004	Jun 2005	Jul 2005	Annual Change	Jul 2004	Jun 2005	Jul 2005	
Population ('000)	111.0	111.5	111.7	0.7	111.0	111.5	111.7	0.7
Labour Force ('000)	79.7	79.5	81.3	1.6	75.1	76.2	76.4	1.3
Employment ('000)	72.4	73.3	73.9	1.5	66.5	67.1	67.9	1.4
Unemployed ('000)	7.3	6.2	7.4	0.1	8.5	9.1	8.4	(0.1)
Unemployment Rate (%)	9.2	7.8	9.1	(0.1)	11.3	11.9	11.0	(0.3)
Participation Rate (%)	71.8	71.3	72.8	1.0	67.7	68.3	68.4	0.7
Employment Rate (%)	65.2	65.7	66.2	1.0	59.9	60.2	60.8	0.9

Population is for those 15 years of age and over.

Annual Change is in thousands or percentage points as shown in row headings.

Employment Situation - July 2005 Canada/Provinces

New Brunswick

	Actual				Seasonally Adjusted			Annual Change
	Jul 2004	Jun 2005	Jul 2005	Annual Change	Jul 2004	Jun 2005	Jul 2005	
Population ('000)	607.8	610.1	610.3	2.5	607.8	610.1	610.3	2.5
Labour Force ('000)	408.0	399.5	405.7	(2.3)	389.8	386.0	386.9	(2.9)
Employment ('000)	369.9	363.5	368.1	(1.8)	351.1	348.4	349.5	(1.6)
Unemployed ('000)	38.1	36.0	37.6	(0.5)	38.7	37.6	37.4	(1.3)
Unemployment Rate (%)	9.3	9.0	9.3	-	9.9	9.7	9.7	(0.2)
Participation Rate (%)	67.1	65.5	66.5	(0.6)	64.1	63.3	63.4	(0.7)
Employment Rate (%)	60.9	59.6	60.3	(0.6)	57.8	57.1	57.3	(0.5)

Quebec

	Actual				Seasonally Adjusted			Annual Change
	Jul 2004	Jun 2005	Jul 2005	Annual Change	Jul 2004	Jun 2005	Jul 2005	
Population ('000)	6,115.0	6,178.7	6,184.7	69.7	6,115.0	6,178.7	6,184.7	69.7
Labour Force ('000)	4,133.2	4,103.5	4,171.5	38.3	4,022.0	4,024.5	4,057.4	35.4
Employment ('000)	3,803.6	3,801.6	3,837.0	33.4	3,685.9	3,703.4	3,718.7	32.8
Unemployed ('000)	329.6	301.9	334.5	4.9	336.2	321.2	338.8	2.6
Unemployment Rate (%)	8.0	7.4	8.0	-	8.4	8.0	8.4	-
Participation Rate (%)	67.6	66.4	67.4	(0.2)	65.8	65.1	65.6	(0.2)
Employment Rate (%)	62.2	61.5	62.0	(0.2)	60.3	59.9	60.1	(0.2)

Ontario

	Actual				Seasonally Adjusted			Annual Change
	Jul 2004	Jun 2005	Jul 2005	Annual Change	Jul 2004	Jun 2005	Jul 2005	
Population ('000)	9,912.0	10,062.4	10,078.6	166.6	9,912.0	10,062.4	10,078.6	166.6
Labour Force ('000)	6,946.2	6,962.3	6,997.4	51.2	6,790.9	6,879.7	6,852.4	61.5
Employment ('000)	6,436.0	6,508.0	6,486.3	50.3	6,337.2	6,416.6	6,397.5	60.3
Unemployed ('000)	510.2	454.3	511.1	0.9	453.6	463.1	455.0	1.4
Unemployment Rate (%)	7.3	6.5	7.3	-	6.7	6.7	6.6	(0.1)
Participation Rate (%)	70.1	69.2	69.4	(0.7)	68.5	68.4	68.0	(0.5)
Employment Rate (%)	64.9	64.7	64.4	(0.5)	63.9	63.8	63.5	(0.4)

Manitoba

	Actual				Seasonally Adjusted			Annual Change
	Jul 2004	Jun 2005	Jul 2005	Annual Change	Jul 2004	Jun 2005	Jul 2005	
Population ('000)	882.2	888.8	889.3	7.1	882.2	888.8	889.3	7.1
Labour Force ('000)	613.7	615.1	617.4	3.7	606.7	607.6	609.9	3.2
Employment ('000)	578.9	588.7	588.6	9.7	572.9	578.3	581.3	8.4
Unemployed ('000)	34.8	26.4	28.7	(6.1)	33.8	29.4	28.6	(5.2)
Unemployment Rate (%)	5.7	4.3	4.6	(1.1)	5.6	4.8	4.7	(0.9)
Participation Rate (%)	69.6	69.2	69.4	(0.2)	68.8	68.4	68.6	(0.2)
Employment Rate (%)	65.6	66.2	66.2	0.6	64.9	65.1	65.4	0.5

Population is for those 15 years of age and over.

Annual Change is in thousands or percentage points as shown in row headings.

Employment Situation - July 2005 Canada/Provinces

Saskatchewan

	Actual				Seasonally Adjusted			Annual Change
	Jul 2004	Jun 2005	Jul 2005	Annual Change	Jul 2004	Jun 2005	Jul 2005	
Population ('000)	746.1	748.5	748.7	2.6	746.1	748.5	748.7	2.6
Labour Force ('000)	517.9	519.4	522.1	4.2	504.1	510.2	508.7	4.6
Employment ('000)	490.1	497.7	496.8	6.7	477.8	485.6	484.9	7.1
Unemployed ('000)	27.8	21.7	25.4	(2.4)	26.2	24.5	23.7	(2.5)
Unemployment Rate (%)	5.4	4.2	4.9	(0.5)	5.2	4.8	4.7	(0.5)
Participation Rate (%)	69.4	69.4	69.7	0.3	67.6	68.2	67.9	0.3
Employment Rate (%)	65.7	66.5	66.4	0.7	64.0	64.9	64.8	0.8

Alberta

	Actual				Seasonally Adjusted			Annual Change
	Jul 2004	Jun 2005	Jul 2005	Annual Change	Jul 2004	Jun 2005	Jul 2005	
Population ('000)	2,508.0	2,552.1	2,556.8	48.8	2,508.0	2,552.1	2,556.8	48.8
Labour Force ('000)	1,867.9	1,881.4	1,886.5	18.6	1,837.7	1,852.9	1,856.1	18.4
Employment ('000)	1,779.6	1,816.6	1,817.2	37.6	1,752.6	1,782.9	1,789.2	36.6
Unemployed ('000)	88.4	64.7	69.4	(19.0)	85.2	70.0	66.9	(18.3)
Unemployment Rate (%)	4.7	3.4	3.7	(1.0)	4.6	3.8	3.6	(1.0)
Participation Rate (%)	74.5	73.7	73.8	(0.7)	73.3	72.6	72.6	(0.7)
Employment Rate (%)	71.0	71.2	71.1	0.1	69.9	69.9	70.0	0.1

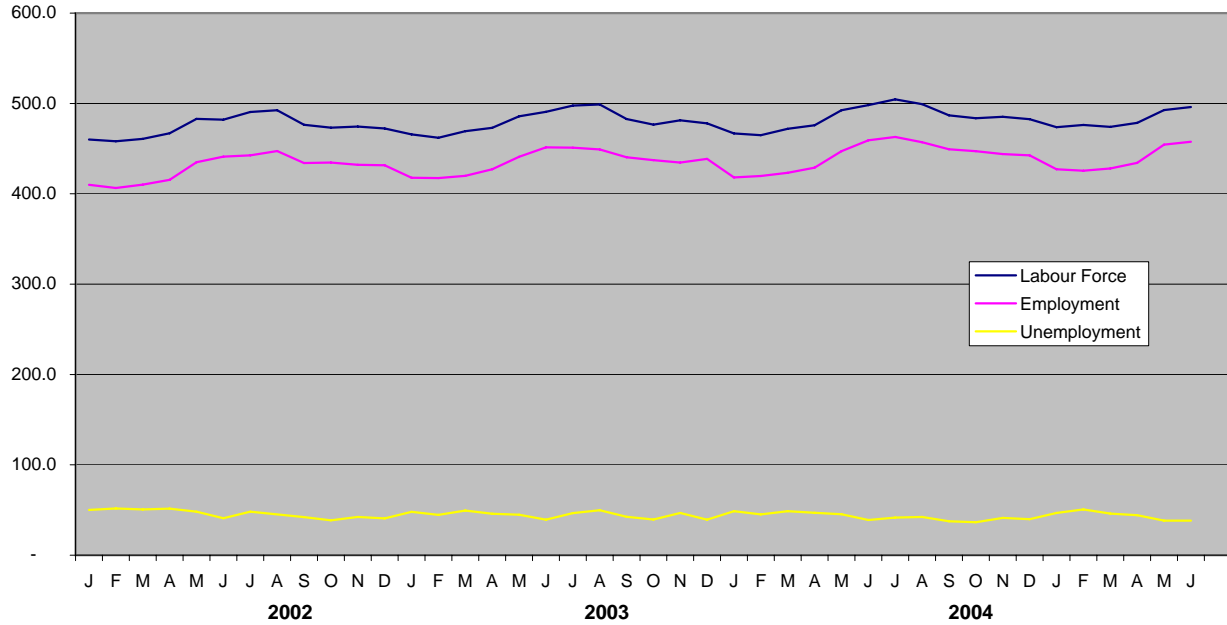
British Columbia

	Actual				Seasonally Adjusted			Annual Change
	Jul 2004	Jun 2005	Jul 2005	Annual Change	Jul 2004	Jun 2005	Jul 2005	
Population ('000)	3,392.5	3,444.5	3,449.8	57.3	3,392.5	3,444.5	3,449.8	57.3
Labour Force ('000)	2,266.4	2,283.4	2,304.9	38.5	2,226.3	2,256.7	2,265.6	39.3
Employment ('000)	2,103.7	2,159.0	2,160.1	56.4	2,070.3	2,126.2	2,125.2	54.9
Unemployed ('000)	162.7	124.3	144.8	(17.9)	156.0	130.5	140.4	(15.6)
Unemployment Rate (%)	7.2	5.4	6.3	(0.9)	7.0	5.8	6.2	(0.8)
Participation Rate (%)	66.8	66.3	66.8	-	65.6	65.5	65.7	0.1
Employment Rate (%)	62.0	62.7	62.6	0.6	61.0	61.7	61.6	0.6

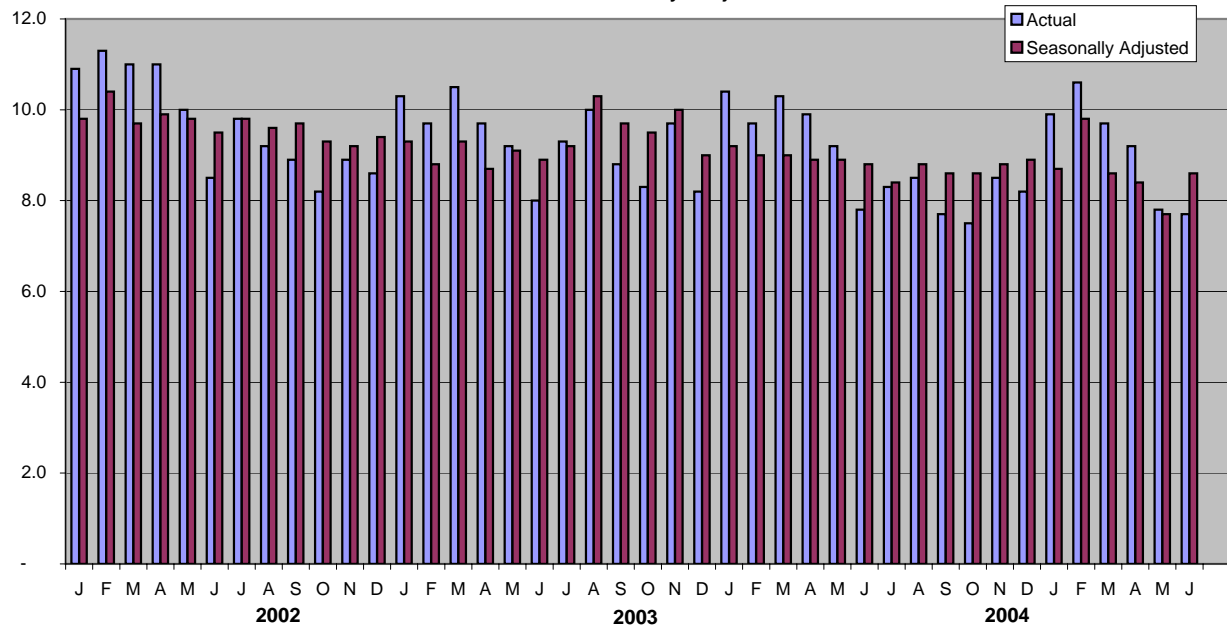
Population is for those 15 years of age and over.

Annual Change is in thousands or percentage points as shown in row headings.

Nova Scotia Labour Force, Employment & Unemployment
 Actual 2002-2005



Nova Scotia Unemployment Rate
 Actual & Seasonally Adjusted



Employment Situation - July 2005
Economic Regions/CMA
(unadjusted - three month moving average)

	Canada				Nova Scotia			Annual Change
	Jul 2004	Jun 2005	Jul 2005	Annual Change	Jul 2004	Jun 2005	Jul 2005	
Population ('000)	25,413.0	25,752.0	25,787.0	374.0	756.6	760.2	760.4	3.8
Labour Force ('000)	17,468.4	17,404.3	17,624.0	155.6	498.4	489.1	495.0	(3.4)
Employment ('000)	16,227.4	16,229.3	16,439.2	211.8	456.4	448.8	456.8	0.4
Unemployed ('000)	1,241.0	1,175.0	1,184.8	(56.2)	42.0	40.2	38.2	(3.8)
Unemployment Rate (%)	7.1	6.8	6.7	(0.4)	8.4	8.2	7.7	(0.7)
Participation Rate (%)	68.7	67.6	68.3	(0.4)	65.9	64.3	65.1	(0.8)
Employment Rate (%)	63.9	63.0	63.7	(0.2)	60.3	59.0	60.1	(0.2)

	230 - Annapolis Valley				210 - Cape Breton			Annual Change
	Jul 2004	Jun 2005	Jul 2005	Annual Change	Jul 2004	Jun 2005	Jul 2005	
Population ('000)	98.8	99.1	99.1	0.3	117.2	116.5	116.4	(0.8)
Labour Force ('000)	64.1	60.9	61.6	(2.5)	66.8	65.7	68.2	1.4
Employment ('000)	58.4	56.2	56.9	(1.5)	57.5	57.1	60.3	2.8
Unemployed ('000)	5.6	4.7	4.7	(0.9)	9.3	8.6	7.9	(1.4)
Unemployment Rate (%)	8.7	7.7	7.6	(1.1)	13.9	13.1	11.6	(2.3)
Participation Rate (%)	64.9	61.5	62.2	(2.7)	57.0	56.4	58.6	1.6
Employment Rate (%)	59.1	56.7	57.4	(1.7)	49.1	49.0	51.8	2.7

	250 - Halifax County				Halifax Metro (CMA)			Annual Change
	Jul 2004	Jun 2005	Jul 2005	Annual Change	Jan 2004	Dec 2004	Jan 2005	
Population ('000)	307.3	311.3	311.6	4.3	305.2	309.2	309.6	4.4
Labour Force ('000)	220.2	219.5	220.2	-	211.2	217.3	217.5	6.3
Employment ('000)	207.2	206.2	207.2	-	198.3	205.1	203.9	5.6
Unemployed ('000)	13.0	13.3	13.0	-	12.9	12.2	13.6	0.7
Unemployment Rate (%)	5.9	6.1	5.9	-	6.1	5.6	6.3	0.2
Participation Rate (%)	71.7	70.5	70.7	(1.0)	69.2	70.3	70.3	1.1
Employment Rate (%)	67.4	66.2	66.5	(0.9)	65.0	66.3	65.9	0.9

	220 - North Shore				240 - Southern			Annual Change
	Jul 2004	Jun 2005	Jul 2005	Annual Change	Jul 2004	Jun 2005	Jul 2005	
Population ('000)	130.3	130.2	130.2	(0.1)	103.0	103.1	103.0	-
Labour Force ('000)	82.5	82.1	82.6	0.1	64.9	60.8	62.3	(2.6)
Employment ('000)	74.9	74.9	76.6	1.7	58.4	54.4	55.8	(2.6)
Unemployed ('000)	7.6	7.3	6.0	(1.6)	6.5	6.5	6.5	-
Unemployment Rate (%)	9.2	8.9	7.3	(1.9)	10.0	10.7	10.4	0.4
Participation Rate (%)	63.3	63.1	63.4	0.1	63.0	59.0	60.5	(2.5)
Employment Rate (%)	57.5	57.5	58.8	1.3	56.7	52.8	54.2	(2.5)

Employment Situation - July 2005
Job Tenure

Employment - Seasonally Adjusted (000's)

	Total				Full-Time				Part-time			
	Jul 2004	Jun 2005	Jul 2005	Annual Change	Jul 2004	Jun 2005	Jul 2005	Annual Change	Jul 2004	Jun 2005	Jul 2005	Annual Change
Canada	15,979.7	16,167.3	16,173.2	193.5	12,995.3	13,213.4	13,210.9	215.6	2,984.4	2,953.9	2,962.4	(22.0)
Newfoundland and Labrador	219.6	215.6	217.6	(2.0)	186.7	186.9	183.6	(3.1)	32.9	28.7	34.0	1.1
Prince Edward Island	66.5	67.1	67.9	1.4	55.0	55.3	55.9	0.9	11.5	11.9	12.1	0.6
Nova Scotia	445.8	443.2	441.4	(4.4)	360.4	355.1	357.3	(3.1)	85.4	88.1	84.1	(1.3)
New Brunswick	351.1	348.4	349.5	(1.6)	295.2	289.9	293.2	(2.0)	55.9	58.5	56.3	0.4
Quebec	3,685.9	3,703.4	3,718.7	32.8	3,008.5	3,064.1	3,014.4	5.9	677.3	639.3	704.3	27.0
Ontario	6,337.2	6,416.6	6,397.5	60.3	5,177.4	5,246.2	5,261.9	84.5	1,159.9	1,170.4	1,135.6	(24.3)
Manitoba	572.9	578.3	581.3	8.4	459.6	466.9	465.7	6.1	113.2	111.3	115.7	2.5
Saskatchewan	477.8	485.6	484.9	7.1	381.7	392.5	392.3	10.6	96.1	93.1	92.6	(3.5)
Alberta	1,752.6	1,782.9	1,789.2	36.6	1,444.7	1,485.1	1,490.7	46.0	307.8	297.8	298.4	(9.4)
British Columbia	2,070.3	2,126.2	2,125.2	54.9	1,625.9	1,672.2	1,695.9	70.0	444.4	454.0	429.3	(15.1)

Employment - Actual (000's)

	Total				Full-Time				Part-time			
	Jul 2004	Jun 2005	Jul 2005	Annual Change	Jul 2004	Jun 2005	Jul 2005	Annual Change	Jul 2004	Jun 2005	Jul 2005	Annual Change
Canada	16,342.7	16,499.3	16,528.7	186.0	13,679.8	13,642.8	13,886.0	206.2	2,663.0	2,856.5	2,642.7	(20.3)
Newfoundland and Labrador	245.6	233.1	242.5	(3.1)	214.9	203.5	210.6	(4.3)	30.7	29.6	31.8	1.1
Prince Edward Island	72.4	73.3	73.9	1.5	62.9	61.4	63.6	0.7	9.5	11.9	10.4	0.9
Nova Scotia	462.9	457.7	458.3	(4.6)	387.2	372.3	383.9	(3.3)	75.7	85.4	74.4	(1.3)
New Brunswick	369.9	363.5	368.1	(1.8)	321.2	307.6	319.0	(2.2)	48.8	55.9	49.0	0.2
Quebec	3,803.6	3,801.6	3,837.0	33.4	3,240.4	3,199.9	3,237.8	(2.6)	563.2	601.8	599.2	36.0
Ontario	6,436.0	6,508.0	6,486.3	50.3	5,377.1	5,367.3	5,455.1	78.0	1,058.9	1,140.7	1,031.2	(27.7)
Manitoba	578.9	588.7	588.6	9.7	482.9	481.0	488.1	5.2	96.0	107.7	100.5	4.5
Saskatchewan	490.1	497.7	496.8	6.7	403.3	405.4	412.2	8.9	86.8	92.3	84.5	(2.3)
Alberta	1,779.6	1,816.6	1,817.2	37.6	1,505.8	1,524.3	1,557.9	52.1	273.7	292.3	259.2	(14.5)
British Columbia	2,103.7	2,159.0	2,160.1	56.4	1,684.2	1,720.0	1,757.7	73.5	419.6	439.0	402.3	(17.3)

Employment Situation - July 2005
Youth Statistics

15-24 Age Group - Seasonally Adjusted

	Labour Force - 000's				Employment - 000's				Unemployment - %			
	Jul 2004	Jun 2005	Jul 2005	Annual Change	Jul 2004	Jun 2005	Jul 2005	Annual Change	Jul 2004	Jun 2005	Jul 2005	Annual Change
Canada	2,851.4	2,819.0	2,824.2	(27.2)	2,474.2	2,458.7	2,461.3	(12.9)	13.2	12.8	12.8	(0.4)
Newfoundland and Labrador	39.1	37.6	36.0	(3.1)	31.2	29.7	28.3	(2.9)	20.2	21.0	21.4	1.2
Prince Edward Island	13.5	13.9	14.1	0.6	10.4	11.0	11.5	1.1	23.7	21.6	18.4	(5.3)
Nova Scotia	83.0	83.6	78.5	(4.5)	71.4	69.0	68.2	(3.2)	14.0	17.5	13.1	(0.9)
New Brunswick	63.5	60.0	64.1	0.6	55.1	51.0	53.3	(1.8)	13.2	15.0	16.8	3.6
Quebec	641.4	614.5	628.1	(13.3)	549.9	535.6	533.4	(16.5)	14.3	12.8	15.1	0.8
Ontario	1,115.1	1,100.6	1,085.3	(29.8)	958.6	938.1	928.9	(29.7)	14.0	14.8	14.4	0.4
Manitoba	108.6	109.7	111.6	3.0	95.8	99.4	101.0	5.2	11.8	9.4	9.5	(2.3)
Saskatchewan	95.3	95.5	94.6	(0.7)	86.0	86.5	86.0	-	9.8	9.5	9.1	(0.7)
Alberta	332.9	328.4	335.3	2.4	305.4	303.9	314.2	8.8	8.3	7.5	6.3	(2.0)
British Columbia	358.9	375.2	376.7	17.8	310.4	334.7	336.5	26.1	13.5	10.8	10.7	(2.8)

15-24 Age Group - Actual

	Labour Force - 000's				Employment - 000's				Unemployment - %			
	Jul 2004	Jun 2005	Jul 2005	Annual Change	Jul 2004	Jun 2005	Jul 2005	Annual Change	Jul 2004	Jun 2005	Jul 2005	Annual Change
Canada	3,318.0	3,005.7	3,283.6	(34.4)	2,857.8	2,642.3	2,839.0	(18.8)	13.9	12.1	13.5	(0.4)
Newfoundland and Labrador	55.7	42.4	50.3	(5.4)	45.7	33.4	40.8	(4.9)	18.0	21.2	18.9	0.9
Prince Edward Island	17.0	15.4	18.1	1.1	14.3	13.1	15.5	1.2	15.9	14.9	13.8	(2.1)
Nova Scotia	101.2	88.5	96.2	(5.0)	86.3	74.8	83.2	(3.1)	14.7	15.5	13.5	(1.2)
New Brunswick	78.8	67.1	79.9	1.1	69.8	57.1	68.0	(1.8)	11.5	14.9	15.0	3.5
Quebec	757.8	667.1	744.5	(13.3)	652.5	586.7	634.7	(17.8)	13.9	12.1	14.7	0.8
Ontario	1,304.6	1,171.2	1,267.3	(37.3)	1,102.1	1,002.3	1,064.8	(37.3)	15.5	14.4	16.0	0.5
Manitoba	120.3	114.9	123.8	3.5	107.0	105.0	112.8	5.8	11.1	8.6	8.9	(2.2)
Saskatchewan	110.9	102.4	109.8	(1.1)	98.8	93.6	98.7	(0.1)	10.9	8.6	10.1	(0.8)
Alberta	369.5	347.2	372.6	3.1	339.4	325.4	350.1	10.7	8.2	6.3	6.0	(2.2)
British Columbia	402.2	389.5	421.0	18.8	342.0	350.8	370.3	28.3	15.0	9.9	12.0	(3.0)

Employment Situation - July 2005

CMA Data

(Unadjusted - three month moving average)

	Unemployment Rate - %				Employment Rate - %				Participation Rate - %			
	Jul 2004	Jun 2005	Jul 2005	Annual Change	Jul 2004	Jun 2005	Jul 2005	Annual Change	Jul 2004	Jun 2005	Jul 2005	Annual Change
St. John's, Newfoundland and Labrador	9.6	10.3	9.9	0.3	61.8	59.4	60.2	(1.6)	68.5	66.2	66.8	(1.7)
Halifax	5.7	6.1	5.9	0.2	68.2	66.2	66.5	(1.7)	72.3	70.5	70.7	(1.6)
Saint John, New Brunswick	9.3	7.7	7.8	(1.5)	60.7	60.9	60.0	(0.7)	67.0	65.9	65.1	(1.9)
Saguenay	9.4	9.0	9.6	0.2	59.4	54.2	55.1	(4.3)	65.5	59.5	61.0	(4.5)
Québec	4.7	5.7	6.2	1.5	64.3	65.1	65.0	0.7	67.5	69.0	69.3	1.8
Trois-Rivières	10.6	9.6	8.4	(2.2)	54.8	60.9	62.1	7.3	61.3	67.5	67.7	6.4
Sherbrooke	6.0	7.4	6.8	0.8	64.1	61.7	62.2	(1.9)	68.2	66.6	66.7	(1.5)
Montréal	8.1	8.3	8.4	0.3	62.7	61.5	62.3	(0.4)	68.2	67.1	68.0	(0.2)
Ottawa-Gatineau	6.8	6.7	7.0	0.2	67.0	66.2	66.2	(0.8)	71.9	71.0	71.2	(0.7)
Sudbury	8.5	7.4	5.7	(2.8)	59.9	58.2	67.8	7.9	65.4	62.8	71.8	6.4
Oshawa	4.9	5.9	7.4	2.5	68.0	67.4	65.7	(2.3)	71.5	71.6	70.9	(0.6)
Toronto	7.9	7.5	6.6	(1.3)	65.5	64.8	62.2	(3.3)	71.2	70.1	66.6	(4.6)
Hamilton	6.6	5.5	8.2	1.6	66.5	63.3	57.3	(9.2)	71.2	67.0	62.3	(8.9)
St. Catharines - Niagara	7.9	6.7	6.0	(1.9)	57.9	59.6	66.6	8.7	62.8	63.8	70.8	8.0
London	5.3	6.8	7.9	2.6	67.6	65.9	65.4	(2.2)	71.4	70.7	71.1	(0.3)
Windsor	9.1	8.3	5.2	(3.9)	60.2	59.9	63.6	3.4	66.2	65.3	67.1	0.9
Kitchener	5.7	5.9	6.5	0.8	67.0	70.2	60.5	(6.5)	71.1	74.6	64.7	(6.4)
Thunder Bay	8.8	7.9	6.8	(2.0)	61.3	63.0	66.4	5.1	67.2	68.4	71.3	4.1
Winnipeg	5.6	4.8	8.8	3.2	67.5	66.0	59.7	(7.8)	71.5	69.3	65.4	(6.1)
Regina	4.6	4.5	6.1	1.5	70.0	68.7	69.8	(0.2)	73.3	71.9	74.3	1.0
Saskatoon	6.2	4.3	7.6	1.4	67.3	69.1	62.9	(4.4)	71.7	72.1	68.1	(3.6)
Calgary	4.9	3.2	5.0	0.1	72.4	72.2	66.4	(6.0)	76.1	74.6	69.9	(6.2)
Edmonton	4.5	4.7	4.7	0.2	69.6	67.4	69.2	(0.4)	72.8	70.7	72.6	(0.2)
Vancouver	7.0	5.9	4.0	(3.0)	63.7	63.6	70.0	6.3	68.5	67.6	73.0	4.5
Victoria	5.7	3.5	3.1	(2.6)	60.9	63.0	72.6	11.7	64.5	65.2	74.9	10.4