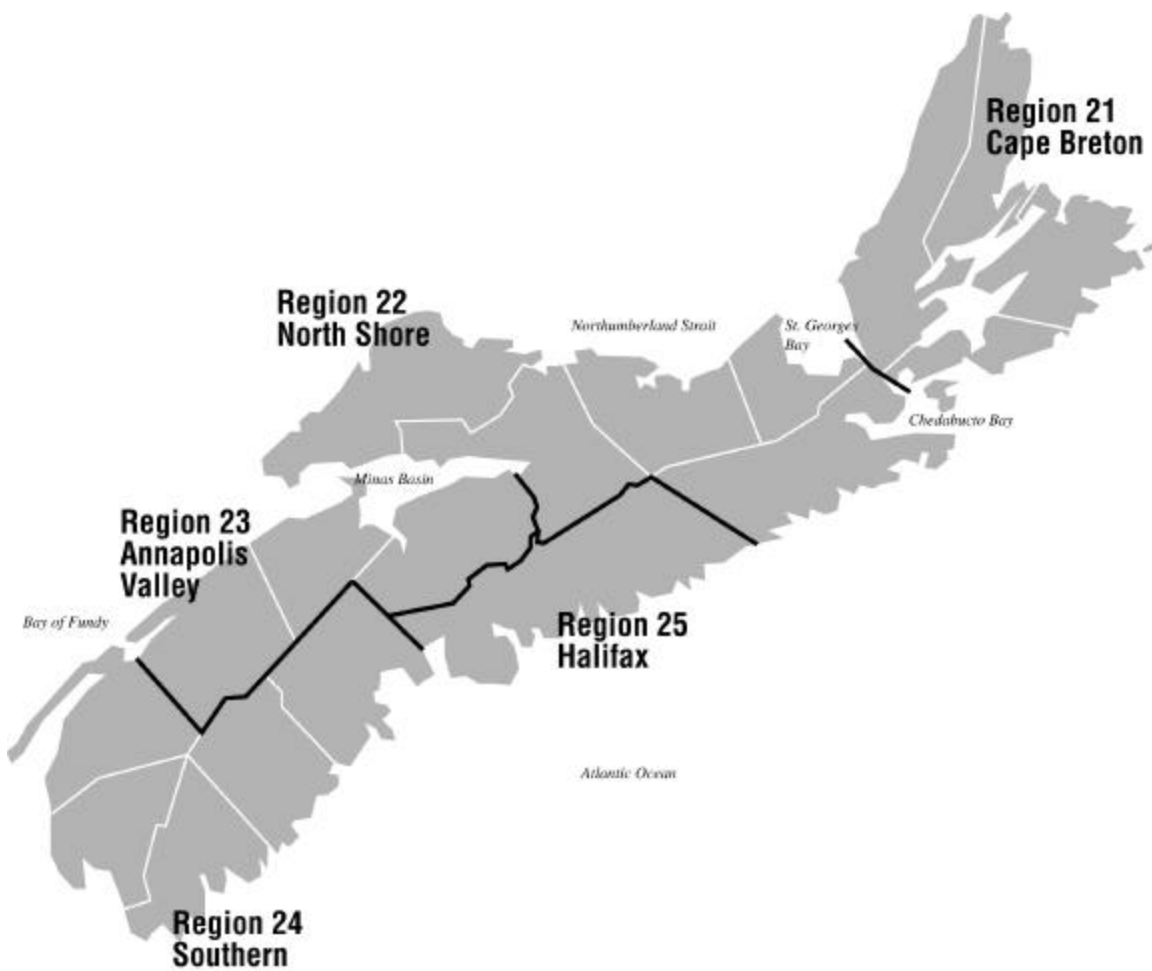


Employment Situation

OCTOBER 2005



About the Employment Situation Report

The Employment Situation Report is produced monthly by the Statistics Division of the Nova Scotia Department of Finance. It is based on the Labour Force Survey (LFS) which is a household survey carried out monthly by Statistics Canada. This publication contains summary tables of selected labour force characteristics including labour force, employment, unemployment, unemployment rate, and participation rate for Canada, the provinces, and CMAs. The publication emphasizes the Nova Scotia employment situation and includes tables for Nova Scotia, its economic regions, and the Metropolitan Halifax area. The report is available on the internet at:

<http://www.gov.ns.ca/finance/publish/pub19.htm>

The LFS survey is a sample of individuals who are representative of the civilian, non-institutionalised population 15 years of age or older in Canada's ten provinces. Specifically excluded from the survey's coverage are residents of the territories, persons living on Indian Reserves, full-time members of the Canadian Armed Forces and institutional residents. These groups represent an exclusion of approximately 2% of the population aged 15 or over. As of April 2005 the sample size has been approximately 51,072 households across Canada and 2,873 in Nova Scotia.

Since its inception in 1945, the objectives of the LFS have been to divide the working-age population into three mutually exclusive classifications--employed, unemployed and not in the labour force--and to provide descriptive and explanatory data on each of these categories. Data from the survey provide information on major labour market trends such as shifts in employment across industrial sectors, hours worked, labour force participation and employment rates.

Release Dates - 2005:

Data for:	Release date:
January 2005	February 4, 2005
February 2005	March 11, 2005
March 2005	April 8, 2005
April 2005	May 6, 2005
May 2005	June 10, 2005
June 2005	July 8, 2005
July 2005	August 5, 2005
August 2005	September 9, 2005
September 2005	October 7, 2005
October 2005	November 4, 2005
November 2005	December 2, 2005

Employment Situation - October 2005 Canada/Provinces

Canada

	Actual				Seasonally Adjusted			Annual Change
	Oct 2004	Sep 2005	Oct 2005	Annual Change	Oct 2004	Sep 2005	Oct 2005	
Population ('000)	25,545.4	25,894.3	25,928.5	383.1	25,545.4	25,894.3	25,928.5	383.1
Labour Force ('000)	17,209.6	17,345.3	17,389.4	179.8	17,264.2	17,370.2	17,423.1	158.9
Employment ('000)	16,099.2	16,266.1	16,330.3	231.1	16,046.8	16,198.4	16,267.1	220.3
Unemployed ('000)	1,110.5	1,079.3	1,059.1	(51.4)	1,217.4	1,171.8	1,155.9	(61.5)
Unemployment Rate (%)	6.5	6.2	6.1	(0.4)	7.1	6.7	6.6	(0.5)
Participation Rate (%)	67.4	67.0	67.1	(0.3)	67.6	67.1	67.2	(0.4)
Employment Rate (%)	63.0	62.8	63.0	-	62.8	62.6	62.7	(0.1)

Nova Scotia

	Actual				Seasonally Adjusted			Annual Change
	Oct 2004	Sep 2005	Oct 2005	Annual Change	Oct 2004	Sep 2005	Oct 2005	
Population ('000)	758.2	761.5	761.7	3.5	758.2	761.5	761.7	3.5
Labour Force ('000)	483.6	482.0	485.1	1.5	484.9	480.9	486.3	1.4
Employment ('000)	447.2	444.6	448.5	1.3	443.3	440.5	445.2	1.9
Unemployed ('000)	36.4	37.4	36.7	0.3	41.6	40.4	41.2	(0.4)
Unemployment Rate (%)	7.5	7.8	7.6	0.1	8.6	8.4	8.5	(0.1)
Participation Rate (%)	63.8	63.3	63.7	(0.1)	64.0	63.2	63.8	(0.2)
Employment Rate (%)	59.0	58.4	58.9	(0.1)	58.5	57.8	58.4	(0.1)

Newfoundland and Labrador

	Actual				Seasonally Adjusted			Annual Change
	Oct 2004	Sep 2005	Oct 2005	Annual Change	Oct 2004	Sep 2005	Oct 2005	
Population ('000)	430.3	429.3	429.4	(0.9)	430.3	429.3	429.4	(0.9)
Labour Force ('000)	249.3	255.7	250.8	1.5	252.3	254.0	253.3	1.0
Employment ('000)	214.4	222.2	215.9	1.5	213.4	215.1	214.8	1.4
Unemployed ('000)	34.9	33.5	35.0	0.1	38.9	38.9	38.5	(0.4)
Unemployment Rate (%)	14.0	13.1	14.0	-	15.4	15.3	15.2	(0.2)
Participation Rate (%)	57.9	59.6	58.4	0.5	58.6	59.2	59.0	0.4
Employment Rate (%)	49.8	51.8	50.3	0.5	49.6	50.1	50.0	0.4

Prince Edward Island

	Actual				Seasonally Adjusted			Annual Change
	Oct 2004	Sep 2005	Oct 2005	Annual Change	Oct 2004	Sep 2005	Oct 2005	
Population ('000)	111.1	111.7	111.8	0.7	111.1	111.7	111.8	0.7
Labour Force ('000)	76.0	77.2	76.6	0.6	76.2	76.5	76.6	0.4
Employment ('000)	68.9	70.8	69.6	0.7	67.5	67.9	68.1	0.6
Unemployed ('000)	7.1	6.3	7.0	(0.1)	8.6	8.6	8.5	(0.1)
Unemployment Rate (%)	9.3	8.2	9.1	(0.2)	11.3	11.2	11.1	(0.2)
Participation Rate (%)	68.4	69.1	68.5	0.1	68.6	68.5	68.5	(0.1)
Employment Rate (%)	62.0	63.4	62.3	0.3	60.8	60.8	60.9	0.1

Population is for those 15 years of age and over.

Annual Change is in thousands or percentage points as shown in row headings.

Employment Situation - October 2005 Canada/Provinces

New Brunswick

	Actual				Seasonally Adjusted			Annual Change
	Oct 2004	Sep 2005	Oct 2005	Annual Change	Oct 2004	Sep 2005	Oct 2005	
Population ('000)	608.1	611.1	611.3	3.2	608.1	611.1	611.3	3.2
Labour Force ('000)	388.0	390.3	389.1	1.1	388.9	387.6	390.0	1.1
Employment ('000)	355.6	357.2	351.6	(4.0)	350.5	347.3	347.0	(3.5)
Unemployed ('000)	32.3	33.1	37.5	5.2	38.4	40.3	43.0	4.6
Unemployment Rate (%)	8.3	8.5	9.6	1.3	9.9	10.4	11.0	1.1
Participation Rate (%)	63.8	63.9	63.7	(0.1)	64.0	63.4	63.8	(0.2)
Employment Rate (%)	58.5	58.5	57.5	(1.0)	57.6	56.8	56.8	(0.8)

Quebec

	Actual				Seasonally Adjusted			Annual Change
	Oct 2004	Sep 2005	Oct 2005	Annual Change	Oct 2004	Sep 2005	Oct 2005	
Population ('000)	6,133.5	6,198.1	6,204.5	71.0	6,133.5	6,198.1	6,204.5	71.0
Labour Force ('000)	4,043.6	4,069.7	4,071.5	27.9	4,062.9	4,069.2	4,083.5	20.6
Employment ('000)	3,729.2	3,757.0	3,757.3	28.1	3,716.3	3,727.8	3,743.9	27.6
Unemployed ('000)	314.4	312.7	314.2	(0.2)	346.6	341.4	339.7	(6.9)
Unemployment Rate (%)	7.8	7.7	7.7	(0.1)	8.5	8.4	8.3	(0.2)
Participation Rate (%)	65.9	65.7	65.6	(0.3)	66.2	65.7	65.8	(0.4)
Employment Rate (%)	60.8	60.6	60.6	(0.2)	60.6	60.1	60.3	(0.3)

Ontario

	Actual				Seasonally Adjusted			Annual Change
	Oct 2004	Sep 2005	Oct 2005	Annual Change	Oct 2004	Sep 2005	Oct 2005	
Population ('000)	9,949.3	10,113.6	10,128.7	179.4	9,949.3	10,113.6	10,128.7	179.4
Labour Force ('000)	6,772.9	6,836.1	6,873.6	100.7	6,794.8	6,863.1	6,887.1	92.3
Employment ('000)	6,362.9	6,417.5	6,466.8	103.9	6,348.4	6,424.4	6,445.6	97.2
Unemployed ('000)	410.0	418.6	406.8	(3.2)	446.4	438.7	441.5	(4.9)
Unemployment Rate (%)	6.1	6.1	5.9	(0.2)	6.6	6.4	6.4	(0.2)
Participation Rate (%)	68.1	67.6	67.9	(0.2)	68.3	67.9	68.0	(0.3)
Employment Rate (%)	64.0	63.5	63.8	(0.2)	63.8	63.5	63.6	(0.2)

Manitoba

	Actual				Seasonally Adjusted			Annual Change
	Oct 2004	Sep 2005	Oct 2005	Annual Change	Oct 2004	Sep 2005	Oct 2005	
Population ('000)	883.9	890.1	890.1	6.2	883.9	890.1	890.1	6.2
Labour Force ('000)	612.1	608.7	607.7	(4.4)	612.4	608.1	607.3	(5.1)
Employment ('000)	582.1	581.9	583.1	1.0	579.6	578.9	580.3	0.7
Unemployed ('000)	30.0	26.8	24.6	(5.4)	32.8	29.2	27.0	(5.8)
Unemployment Rate (%)	4.9	4.4	4.0	(0.9)	5.4	4.8	4.4	(1.0)
Participation Rate (%)	69.2	68.4	68.3	(0.9)	69.3	68.3	68.2	(1.1)
Employment Rate (%)	65.9	65.4	65.5	(0.4)	65.6	65.0	65.2	(0.4)

Population is for those 15 years of age and over.

Annual Change is in thousands or percentage points as shown in row headings.

Employment Situation - October 2005 Canada/Provinces

Saskatchewan

	Actual				Seasonally Adjusted			Annual Change
	Oct 2004	Sep 2005	Oct 2005	Annual Change	Oct 2004	Sep 2005	Oct 2005	
Population ('000)	746.6	748.8	748.9	2.3	746.6	748.8	748.9	2.3
Labour Force ('000)	507.4	507.7	503.0	(4.4)	507.7	508.8	505.0	(2.7)
Employment ('000)	485.7	479.7	479.5	(6.2)	483.2	478.1	478.5	(4.7)
Unemployed ('000)	21.7	28.0	23.6	1.9	24.5	30.6	26.5	2.0
Unemployment Rate (%)	4.3	5.5	4.7	0.4	4.8	6.0	5.2	0.4
Participation Rate (%)	68.0	67.8	67.2	(0.8)	68.0	67.9	67.4	(0.6)
Employment Rate (%)	65.1	64.1	64.0	(1.1)	64.7	63.8	63.9	(0.8)

Alberta

	Actual				Seasonally Adjusted			Annual Change
	Oct 2004	Sep 2005	Oct 2005	Annual Change	Oct 2004	Sep 2005	Oct 2005	
Population ('000)	2,519.1	2,567.7	2,574.0	54.9	2,519.1	2,567.7	2,574.0	54.9
Labour Force ('000)	1,843.8	1,856.7	1,863.0	19.2	1,852.9	1,859.5	1,869.2	16.3
Employment ('000)	1,761.5	1,788.4	1,792.3	30.8	1,765.1	1,783.9	1,794.9	29.8
Unemployed ('000)	82.3	68.3	70.7	(11.6)	87.7	75.7	74.4	(13.3)
Unemployment Rate (%)	4.5	3.7	3.8	(0.7)	4.7	4.1	4.0	(0.7)
Participation Rate (%)	73.2	72.3	72.4	(0.8)	73.6	72.4	72.6	(1.0)
Employment Rate (%)	69.9	69.6	69.6	(0.3)	70.1	69.5	69.7	(0.4)

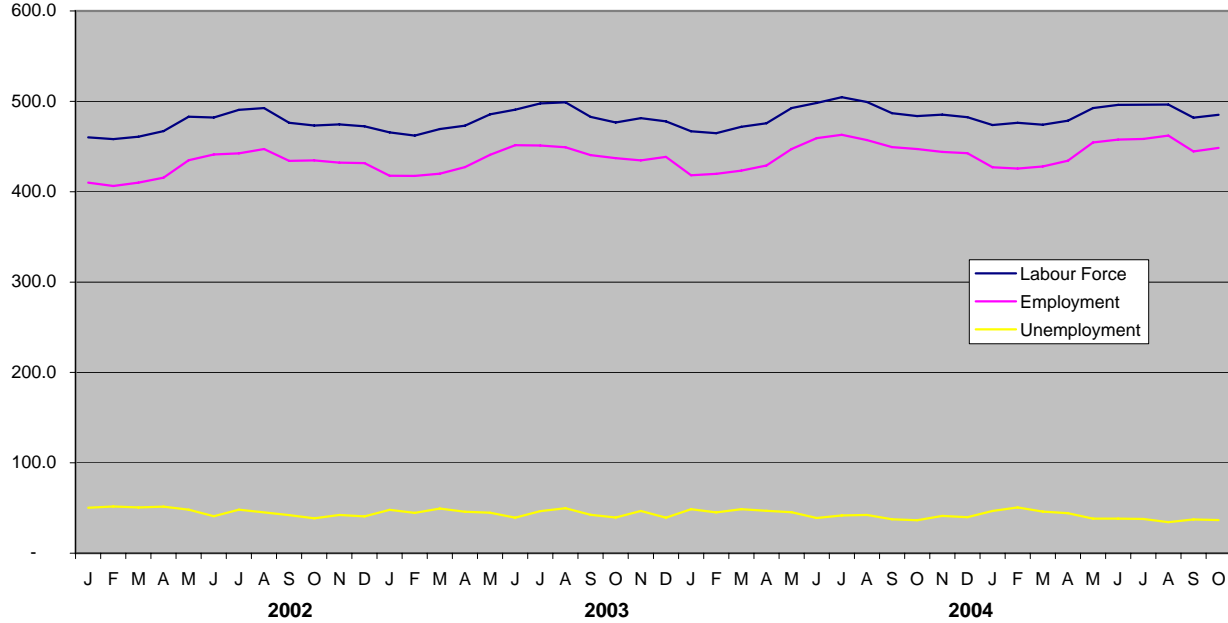
British Columbia

	Actual				Seasonally Adjusted			Annual Change
	Oct 2004	Sep 2005	Oct 2005	Annual Change	Oct 2004	Sep 2005	Oct 2005	
Population ('000)	3,405.2	3,462.2	3,468.0	62.8	3,405.2	3,462.2	3,468.0	62.8
Labour Force ('000)	2,232.9	2,261.3	2,268.9	36.0	2,231.2	2,262.5	2,264.6	33.4
Employment ('000)	2,091.6	2,146.8	2,165.9	74.3	2,079.4	2,134.5	2,148.9	69.5
Unemployed ('000)	141.2	114.4	103.0	(38.2)	151.8	127.9	115.7	(36.1)
Unemployment Rate (%)	6.3	5.1	4.5	(1.8)	6.8	5.7	5.1	(1.7)
Participation Rate (%)	65.6	65.3	65.4	(0.2)	65.5	65.3	65.3	(0.2)
Employment Rate (%)	61.4	62.0	62.5	1.1	61.1	61.7	62.0	0.9

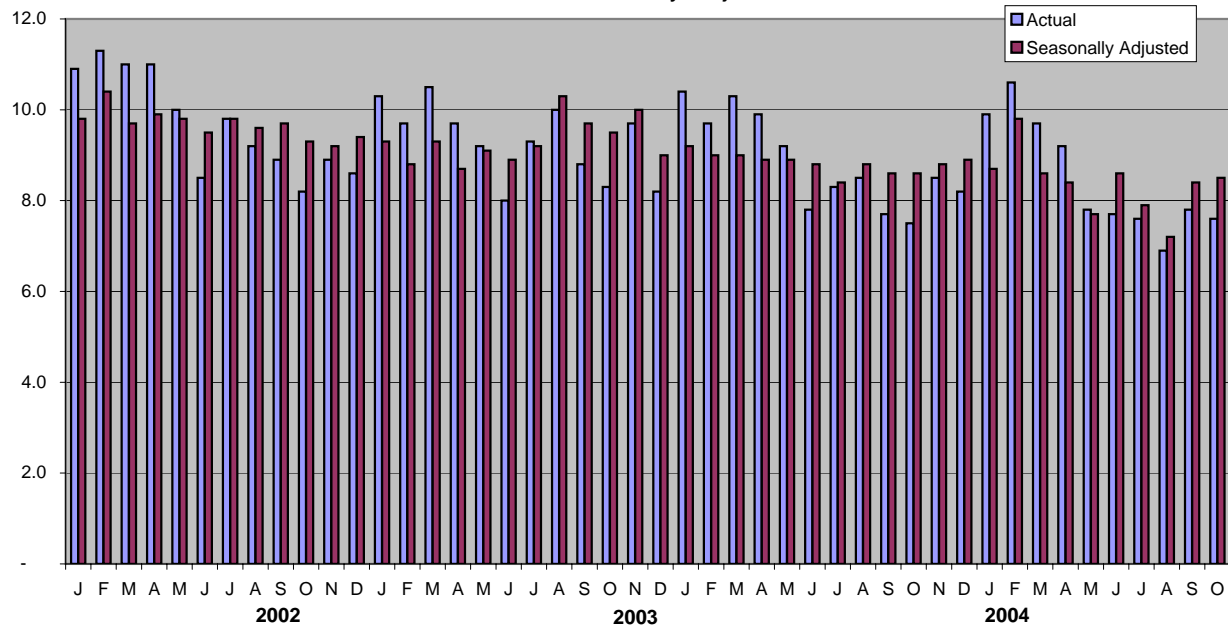
Population is for those 15 years of age and over.

Annual Change is in thousands or percentage points as shown in row headings.

Nova Scotia Labour Force, Employment & Unemployment
 Actual 2002-2005



Nova Scotia Unemployment Rate
 Actual & Seasonally Adjusted



Employment Situation - October 2005
Economic Regions/CMA
(unadjusted - three month moving average)

	Canada				Nova Scotia			
	Oct 2004	Sep 2005	Oct 2005	Annual Change	Oct 2004	Sep 2005	Oct 2005	Annual Change
Population ('000)	25,518.3	25,857.6	25,893.8	375.5	757.9	761.1	761.4	3.5
Labour Force ('000)	17,320.0	17,626.3	17,503.1	183.1	489.9	491.5	487.8	(2.1)
Employment ('000)	16,144.8	16,434.0	16,367.9	223.1	451.2	455.0	451.7	0.5
Unemployed ('000)	1,175.2	1,192.3	1,135.2	(40.0)	38.8	36.6	36.1	(2.7)
Unemployment Rate (%)	6.8	6.8	6.5	(0.3)	7.9	7.4	7.4	(0.5)
Participation Rate (%)	67.9	68.2	67.6	(0.3)	64.6	64.6	64.1	(0.5)
Employment Rate (%)	63.3	63.6	63.2	(0.1)	59.5	59.8	59.3	(0.2)

	230 - Annapolis Valley				210 - Cape Breton			
	Oct 2004	Sep 2005	Oct 2005	Annual Change	Oct 2004	Sep 2005	Oct 2005	Annual Change
Population ('000)	98.9	99.3	99.3	0.4	117.1	116.6	116.6	(0.5)
Labour Force ('000)	65.9	62.1	62.0	(3.9)	61.1	68.5	68.0	6.9
Employment ('000)	61.0	57.2	57.3	(3.7)	51.5	59.4	58.4	6.9
Unemployed ('000)	4.8	5.0	4.7	(0.1)	9.6	9.1	9.5	(0.1)
Unemployment Rate (%)	7.3	8.1	7.6	0.3	15.7	13.3	14.0	(1.7)
Participation Rate (%)	66.6	62.5	62.4	(4.2)	52.2	58.7	58.3	6.1
Employment Rate (%)	61.7	57.6	57.7	(4.0)	44.0	50.9	50.1	6.1

	250 - Halifax County				Halifax Metro (CMA)			
	Oct 2004	Sep 2005	Oct 2005	Annual Change	Oct 2004	Sep 2005	Oct 2005	Annual Change
Population ('000)	308.5	311.3	311.8	3.3	308.5	311.3	311.8	3.3
Labour Force ('000)	218.6	216.8	215.5	(3.1)	218.6	216.8	215.5	(3.1)
Employment ('000)	206.6	206.4	205.3	(1.3)	206.6	206.4	205.3	(1.3)
Unemployed ('000)	12.0	10.4	10.2	(1.8)	12.0	10.4	10.2	(1.8)
Unemployment Rate (%)	5.5	4.8	4.7	(0.8)	5.5	4.8	4.7	(0.8)
Participation Rate (%)	70.9	69.6	69.1	(1.8)	70.9	69.6	69.1	(1.8)
Employment Rate (%)	67.0	66.3	65.8	(1.2)	67.0	66.3	65.8	(1.2)

	220 - North Shore				240 - Southern			
	Oct 2004	Sep 2005	Oct 2005	Annual Change	Oct 2004	Sep 2005	Oct 2005	Annual Change
Population ('000)	130.3	130.5	130.5	0.2	103.1	103.3	103.3	0.2
Labour Force ('000)	80.6	80.3	79.8	(0.8)	63.8	63.8	62.6	(1.2)
Employment ('000)	73.5	75.0	74.5	1.0	58.5	57.0	56.2	(2.3)
Unemployed ('000)	7.2	5.3	5.3	(1.9)	5.2	6.8	6.4	1.2
Unemployment Rate (%)	8.9	6.6	6.6	(2.3)	8.2	10.7	10.2	2.0
Participation Rate (%)	61.9	61.5	61.1	(0.8)	61.9	61.8	60.6	(1.3)
Employment Rate (%)	56.4	57.5	57.1	0.7	56.7	55.2	54.4	(2.3)

Employment Situation - October 2005
Job Tenure

Employment - Seasonally Adjusted (000's)

	Total				Full-Time				Part-time			
	Oct 2004	Sep 2005	Oct 2005	Annual Change	Oct 2004	Sep 2005	Oct 2005	Annual Change	Oct 2004	Sep 2005	Oct 2005	Annual Change
Canada	16,046.8	16,198.4	16,267.1	220.3	13,089.2	13,265.6	13,275.1	185.9	2,957.5	2,932.9	2,992.0	34.5
Newfoundland and Labrador	213.4	215.1	214.8	1.4	184.8	184.4	184.0	(0.8)	28.6	30.7	30.9	2.3
Prince Edward Island	67.5	67.9	68.1	0.6	56.3	56.6	57.3	1.0	11.3	11.3	10.7	(0.6)
Nova Scotia	443.3	440.5	445.2	1.9	360.0	354.9	361.6	1.6	83.4	85.6	83.6	0.2
New Brunswick	350.5	347.3	347.0	(3.5)	296.2	292.6	290.4	(5.8)	54.2	54.7	56.6	2.4
Quebec	3,716.3	3,727.8	3,743.9	27.6	3,055.6	3,049.0	3,057.8	2.2	660.7	678.8	686.1	25.4
Ontario	6,348.4	6,424.4	6,445.6	97.2	5,168.0	5,291.4	5,297.7	129.7	1,180.4	1,132.9	1,148.0	(32.4)
Manitoba	579.6	578.9	580.3	0.7	465.4	473.7	466.1	0.7	114.2	105.1	114.1	(0.1)
Saskatchewan	483.2	478.1	478.5	(4.7)	388.4	385.5	382.6	(5.8)	94.8	92.6	95.9	1.1
Alberta	1,765.1	1,783.9	1,794.9	29.8	1,442.3	1,487.3	1,479.1	36.8	322.8	296.6	315.7	(7.1)
British Columbia	2,079.4	2,134.5	2,148.9	69.5	1,672.8	1,690.0	1,698.9	26.1	406.5	444.6	450.0	43.5

Employment - Actual (000's)

	Total				Full-Time				Part-time			
	Oct 2004	Sep 2005	Oct 2005	Annual Change	Oct 2004	Sep 2005	Oct 2005	Annual Change	Oct 2004	Sep 2005	Oct 2005	Annual Change
Canada	16,099.2	16,266.1	16,330.3	231.1	13,056.5	13,369.1	13,244.4	187.9	3,042.7	2,896.9	3,085.9	43.2
Newfoundland and Labrador	214.4	222.2	215.9	1.5	185.2	191.9	184.8	(0.4)	29.2	30.4	31.1	1.9
Prince Edward Island	68.9	70.8	69.6	0.7	57.3	59.6	58.8	1.5	11.5	11.2	10.8	(0.7)
Nova Scotia	447.2	444.6	448.5	1.3	361.6	359.2	363.6	2.0	85.6	85.4	84.9	(0.7)
New Brunswick	355.6	357.2	351.6	(4.0)	300.0	303.5	293.9	(6.1)	55.6	53.6	57.7	2.1
Quebec	3,729.2	3,757.0	3,757.3	28.1	3,037.3	3,085.7	3,037.1	(0.2)	691.9	671.3	720.2	28.3
Ontario	6,362.9	6,417.5	6,466.8	103.9	5,147.1	5,310.0	5,283.7	136.6	1,215.8	1,107.5	1,183.1	(32.7)
Manitoba	582.1	581.9	583.1	1.0	466.7	476.4	467.2	0.5	115.5	105.5	115.9	0.4
Saskatchewan	485.7	479.7	479.5	(6.2)	388.8	386.4	381.0	(7.8)	96.9	93.4	98.4	1.5
Alberta	1,761.5	1,788.4	1,792.3	30.8	1,436.1	1,495.4	1,469.1	33.0	325.4	293.0	323.2	(2.2)
British Columbia	2,091.6	2,146.8	2,165.9	74.3	1,676.3	1,701.0	1,705.2	28.9	415.3	445.8	460.7	45.4

Employment Situation - October 2005 Youth Statistics

15-24 Age Group - Seasonally Adjusted

	Labour Force - 000's				Employment - 000's				Unemployment - %			
	Oct 2004	Sep 2005	Oct 2005	Annual Change	Oct 2004	Sep 2005	Oct 2005	Annual Change	Oct 2004	Sep 2005	Oct 2005	Annual Change
Canada	2,861.6	2,816.8	2,834.1	(27.5)	2,484.4	2,459.8	2,491.8	7.4	13.2	12.7	12.1	(1.1)
Newfoundland and Labrador	39.1	36.2	36.0	(3.1)	30.4	28.5	27.4	(3.0)	22.3	21.3	23.9	1.6
Prince Edward Island	13.7	13.5	13.4	(0.3)	11.2	11.7	11.2	-	18.2	13.3	16.4	(1.8)
Nova Scotia	84.0	80.9	81.0	(3.0)	71.6	68.2	69.8	(1.8)	14.9	15.7	13.8	(1.1)
New Brunswick	62.6	62.1	63.9	1.3	53.6	53.5	52.8	(0.8)	14.4	13.8	17.4	3.0
Quebec	661.1	630.5	623.1	(38.0)	559.6	535.0	540.2	(19.4)	15.4	15.1	13.3	(2.1)
Ontario	1,098.5	1,085.0	1,095.4	(3.1)	949.3	935.2	944.1	(5.2)	13.6	13.8	13.8	0.2
Manitoba	109.4	107.3	108.4	(1.0)	96.1	96.8	99.9	3.8	12.2	9.9	7.7	(4.5)
Saskatchewan	94.9	94.6	94.5	(0.4)	86.0	83.9	84.5	(1.5)	9.4	11.2	10.6	1.2
Alberta	342.2	333.9	337.6	(4.6)	314.2	306.9	313.3	(0.9)	8.2	8.1	7.2	(1.0)
British Columbia	356.2	372.7	380.9	24.7	312.4	340.0	348.6	36.2	12.3	8.7	8.5	(3.8)

15-24 Age Group - Actual

	Labour Force - 000's				Employment - 000's				Unemployment - %			
	Oct 2004	Sep 2005	Oct 2005	Annual Change	Oct 2004	Sep 2005	Oct 2005	Annual Change	Oct 2004	Sep 2005	Oct 2005	Annual Change
Canada	2,766.1	2,729.8	2,749.6	(16.5)	2,416.6	2,390.4	2,429.2	12.6	12.6	12.4	11.7	(0.9)
Newfoundland and Labrador	35.5	33.8	33.0	(2.5)	28.1	26.7	25.0	(3.1)	20.8	21.0	24.2	3.4
Prince Edward Island	13.1	13.2	12.9	(0.2)	10.7	11.7	10.7	-	18.3	11.4	17.1	(1.2)
Nova Scotia	81.2	77.8	78.2	(3.0)	69.0	65.2	67.3	(1.7)	14.9	16.2	13.9	(1.0)
New Brunswick	59.6	59.7	60.7	1.1	51.5	52.3	50.3	(1.2)	13.8	12.2	17.1	3.3
Quebec	638.7	613.6	604.1	(34.6)	545.1	524.1	525.0	(20.1)	14.7	14.6	13.1	(1.6)
Ontario	1,057.2	1,042.2	1,059.4	2.2	921.8	896.7	919.0	(2.8)	12.8	14.0	13.3	0.5
Manitoba	107.2	105.8	106.3	(0.9)	94.4	95.7	98.1	3.7	11.8	9.5	7.8	(4.0)
Saskatchewan	91.7	92.8	90.7	(1.0)	83.9	82.0	81.9	(2.0)	8.5	11.6	9.7	1.2
Alberta	334.4	328.8	330.7	(3.7)	306.5	304.6	306.9	0.4	8.3	7.4	7.2	(1.1)
British Columbia	347.6	362.0	373.6	26.0	305.6	331.3	345.1	39.5	12.1	8.5	7.6	(4.5)

Employment Situation - October 2005

CMA Data

(Unadjusted - three month moving average)

	Unemployment Rate - %				Employment Rate - %				Participation Rate - %			
	Oct 2004	Sep 2005	Oct 2005	Annual Change	Oct 2004	Sep 2005	Oct 2005	Annual Change	Oct 2004	Sep 2005	Oct 2005	Annual Change
St. John's, Newfoundland and Labrador	8.5	8.8	8.2	(0.3)	60.5	60.6	59.6	(0.9)	66.1	66.5	64.9	(1.2)
Halifax	5.4	4.8	4.7	(0.7)	67.4	66.3	65.8	(1.6)	71.3	69.6	69.1	(2.2)
Saint John, New Brunswick	7.0	8.0	7.6	0.6	62.0	58.3	57.7	(4.3)	66.6	63.3	62.4	(4.2)
Saguenay	10.4	9.8	10.4	-	57.1	55.2	54.5	(2.6)	63.7	61.3	60.9	(2.8)
Québec	3.9	6.0	4.8	0.9	63.2	64.2	63.6	0.4	65.7	68.3	66.8	1.1
Trois-Rivières	10.9	7.4	8.0	(2.9)	54.5	60.0	58.1	3.6	61.1	64.8	63.2	2.1
Sherbrooke	6.3	6.8	7.1	0.8	62.3	60.9	60.2	(2.1)	66.5	65.4	64.7	(1.8)
Montréal	8.5	8.7	8.8	0.3	61.8	62.3	61.9	0.1	67.5	68.3	67.8	0.3
Ottawa-Gatineau	6.6	7.6	6.9	0.3	66.3	65.8	66.2	(0.1)	70.9	71.2	71.1	0.2
Sudbury	7.8	8.3	7.7	(0.1)	59.8	56.5	56.5	(3.3)	64.9	61.6	61.3	(3.6)
Oshawa	5.6	6.2	6.0	0.4	64.6	65.4	65.1	0.5	68.4	69.7	69.2	0.8
Toronto	7.8	7.4	6.7	(1.1)	64.5	65.3	65.3	0.8	69.9	70.5	70.0	0.1
Hamilton	5.5	5.8	5.9	0.4	66.2	63.1	63.2	(3.0)	70.0	67.0	67.2	(2.8)
St. Catharines - Niagara	5.6	7.5	6.8	1.2	59.7	59.9	59.2	(0.5)	63.2	64.8	63.5	0.3
London	6.2	6.6	6.5	0.3	65.1	65.7	64.7	(0.4)	69.4	70.4	69.2	(0.2)
Windsor	9.0	7.6	6.6	(2.4)	61.6	60.6	61.0	(0.6)	67.7	65.6	65.3	(2.4)
Kitchener	5.3	6.2	6.0	0.7	66.3	68.4	68.3	2.0	69.9	72.9	72.6	2.7
Thunder Bay	8.3	6.5	5.9	(2.4)	60.8	62.0	61.4	0.6	66.3	66.3	65.2	(1.1)
Winnipeg	5.7	5.4	5.1	(0.6)	67.7	65.8	65.6	(2.1)	71.8	69.6	69.1	(2.7)
Regina	4.5	5.3	5.1	0.6	68.9	67.6	66.9	(2.0)	72.2	71.4	70.5	(1.7)
Saskatoon	6.0	5.4	5.8	(0.2)	67.2	68.1	66.5	(0.7)	71.5	72.1	70.6	(0.9)
Calgary	4.9	3.7	4.1	(0.8)	71.0	71.3	70.3	(0.7)	74.7	74.0	73.3	(1.4)
Edmonton	4.7	4.5	4.2	(0.5)	69.6	68.3	67.9	(1.7)	73.0	71.5	70.8	(2.2)
Vancouver	6.9	6.1	5.4	(1.5)	62.9	63.1	62.9	-	67.6	67.2	66.5	(1.1)
Victoria	6.0	4.6	4.7	(1.3)	58.9	63.3	63.3	4.4	62.6	66.4	66.4	3.8