

# Employment Situation

## DECEMBER 2005



## About the Employment Situation Report

The Employment Situation Report is produced monthly by the Statistics Division of the Nova Scotia Department of Finance. It is based on the Labour Force Survey (LFS) which is a household survey carried out monthly by Statistics Canada. This publication contains summary tables of selected labour force characteristics including labour force, employment, unemployment, unemployment rate, and participation rate for Canada, the provinces, and CMAs. The publication emphasizes the Nova Scotia employment situation and includes tables for Nova Scotia, its economic regions, and the Metropolitan Halifax area. The report is available on the internet at:

<http://www.gov.ns.ca/finance/publish/pub19.htm>

The LFS survey is a sample of individuals who are representative of the civilian, non-institutionalised population 15 years of age or older in Canada's ten provinces. Specifically excluded from the survey's coverage are residents of the territories, persons living on Indian Reserves, full-time members of the Canadian Armed Forces and institutional residents. These groups represent an exclusion of approximately 2% of the population aged 15 or over. As of April 2005 the sample size has been approximately 51,072 households across Canada and 2,873 in Nova Scotia.

Since its inception in 1945, the objectives of the LFS have been to divide the working-age population into three mutually exclusive classifications--employed, unemployed and not in the labour force--and to provide descriptive and explanatory data on each of these categories. Data from the survey provide information on major labour market trends such as shifts in employment across industrial sectors, hours worked, labour force participation and employment rates.

### Release Dates - 2006:

<b>Data for:</b>	<b>Release date:</b>
January 2006	February 10, 2006
February 2006	March 10, 2006
March 2006	April 7, 2006
April 2006	May 5, 2006
May 2006	June 9, 2006
June 2006	July 7, 2006
July 2006	August 4, 2006
August 2006	September 8, 2006
September 2006	October 6, 2006
October 2006	November 3, 2006
November 2006	December 1, 2006

**Employment Situation - December 2005**  
**Canada/Provinces**

**Canada**

	Actual				Seasonally Adjusted			Annual Change
	Dec 2004	Nov 2005	Dec 2005	Annual Change	Dec 2004	Nov 2005	Dec 2005	
Population ('000)	25,596.8	25,959.7	25,986.6	389.8	25,596.8	25,959.7	25,986.6	389.8
Labour Force ('000)	17,130.7	17,331.0	17,286.6	155.9	17,280.0	17,403.4	17,425.1	145.1
Employment ('000)	15,989.6	16,295.0	16,231.5	241.9	16,063.1	16,297.7	16,295.6	232.5
Unemployed ('000)	1,141.1	1,036.0	1,055.2	(85.9)	1,216.9	1,105.7	1,129.5	(87.4)
Unemployment Rate (%)	6.7	6.0	6.1	(0.6)	7.0	6.4	6.5	(0.5)
Participation Rate (%)	66.9	66.8	66.5	(0.4)	67.5	67.0	67.1	(0.4)
Employment Rate (%)	62.5	62.8	62.5	-	62.8	62.8	62.7	(0.1)

**Nova Scotia**

	Actual				Seasonally Adjusted			Annual Change
	Dec 2004	Nov 2005	Dec 2005	Annual Change	Dec 2004	Nov 2005	Dec 2005	
Population ('000)	758.8	761.7	762.0	3.2	758.8	761.7	762.0	3.2
Labour Force ('000)	482.5	480.7	478.5	(4.0)	486.6	482.4	482.5	(4.1)
Employment ('000)	442.6	442.1	440.4	(2.2)	443.4	442.8	441.5	(1.9)
Unemployed ('000)	39.8	38.6	38.1	(1.7)	43.2	39.6	40.9	(2.3)
Unemployment Rate (%)	8.2	8.0	8.0	(0.2)	8.9	8.2	8.5	(0.4)
Participation Rate (%)	63.6	63.1	62.8	(0.8)	64.1	63.3	63.3	(0.8)
Employment Rate (%)	58.3	58.0	57.8	(0.5)	58.4	58.1	57.9	(0.5)

**Newfoundland and Labrador**

	Actual				Seasonally Adjusted			Annual Change
	Dec 2004	Nov 2005	Dec 2005	Annual Change	Dec 2004	Nov 2005	Dec 2005	
Population ('000)	430.4	429.3	429.1	(1.3)	430.4	429.3	429.1	(1.3)
Labour Force ('000)	245.0	251.0	242.3	(2.7)	252.2	255.9	249.8	(2.4)
Employment ('000)	208.9	214.2	203.9	(5.0)	216.0	217.6	211.1	(4.9)
Unemployed ('000)	36.1	36.8	38.4	2.3	36.2	38.3	38.7	2.5
Unemployment Rate (%)	14.7	14.7	15.8	1.1	14.4	15.0	15.5	1.1
Participation Rate (%)	56.9	58.5	56.5	(0.4)	58.6	59.6	58.2	(0.4)
Employment Rate (%)	48.5	49.9	47.5	(1.0)	50.2	50.7	49.2	(1.0)

**Prince Edward Island**

	Actual				Seasonally Adjusted			Annual Change
	Dec 2004	Nov 2005	Dec 2005	Annual Change	Dec 2004	Nov 2005	Dec 2005	
Population ('000)	111.2	111.9	112.0	0.8	111.2	111.9	112.0	0.8
Labour Force ('000)	74.3	75.0	74.8	0.5	76.7	76.6	76.8	0.1
Employment ('000)	65.6	67.0	65.8	0.2	68.7	68.5	68.4	(0.3)
Unemployed ('000)	8.7	8.0	9.1	0.4	8.0	8.1	8.4	0.4
Unemployment Rate (%)	11.7	10.7	12.2	0.5	10.4	10.6	10.9	0.5
Participation Rate (%)	66.8	67.0	66.8	-	69.0	68.5	68.6	(0.4)
Employment Rate (%)	59.0	59.9	58.8	(0.2)	61.8	61.2	61.1	(0.7)

Population is for those 15 years of age and over.

Annual Change is in thousands or percentage points as shown in row headings.

**Employment Situation - December 2005**  
**Canada/Provinces**

**New Brunswick**

	Actual				Seasonally Adjusted			Annual Change
	Dec 2004	Nov 2005	Dec 2005	Annual Change	Dec 2004	Nov 2005	Dec 2005	
Population ('000)	608.6	611.5	611.3	2.7	608.6	611.5	611.3	2.7
Labour Force ('000)	380.6	385.3	386.0	5.4	389.4	388.2	394.1	4.7
Employment ('000)	346.1	352.2	350.8	4.7	352.9	351.5	356.2	3.3
Unemployed ('000)	34.5	33.1	35.1	0.6	36.5	36.7	37.8	1.3
Unemployment Rate (%)	9.1	8.6	9.1	-	9.4	9.5	9.6	0.2
Participation Rate (%)	62.5	63.0	63.1	0.6	64.0	63.5	64.5	0.5
Employment Rate (%)	56.9	57.6	57.4	0.5	58.0	57.5	58.3	0.3

**Quebec**

	Actual				Seasonally Adjusted			Annual Change
	Dec 2004	Nov 2005	Dec 2005	Annual Change	Dec 2004	Nov 2005	Dec 2005	
Population ('000)	6,143.8	6,211.1	6,215.9	72.1	6,143.8	6,211.1	6,215.9	72.1
Labour Force ('000)	4,009.0	4,051.9	4,056.2	47.2	4,052.5	4,069.7	4,090.3	37.8
Employment ('000)	3,665.0	3,735.1	3,721.0	56.0	3,703.9	3,745.1	3,755.3	51.4
Unemployed ('000)	344.0	316.8	335.2	(8.8)	348.6	324.6	335.0	(13.6)
Unemployment Rate (%)	8.6	7.8	8.3	(0.3)	8.6	8.0	8.2	(0.4)
Participation Rate (%)	65.3	65.2	65.3	-	66.0	65.5	65.8	(0.2)
Employment Rate (%)	59.7	60.1	59.9	0.2	60.3	60.3	60.4	0.1

**Ontario**

	Actual				Seasonally Adjusted			Annual Change
	Dec 2004	Nov 2005	Dec 2005	Annual Change	Dec 2004	Nov 2005	Dec 2005	
Population ('000)	9,972.0	10,141.9	10,152.8	180.8	9,972.0	10,141.9	10,152.8	180.8
Labour Force ('000)	6,766.7	6,834.6	6,797.1	30.4	6,819.0	6,864.0	6,852.5	33.5
Employment ('000)	6,345.8	6,458.8	6,421.2	75.4	6,353.5	6,447.0	6,429.3	75.8
Unemployed ('000)	420.9	375.8	375.8	(45.1)	465.5	417.1	423.2	(42.3)
Unemployment Rate (%)	6.2	5.5	5.5	(0.7)	6.8	6.1	6.2	(0.6)
Participation Rate (%)	67.9	67.4	66.9	(1.0)	68.4	67.7	67.5	(0.9)
Employment Rate (%)	63.6	63.7	63.2	(0.4)	63.7	63.6	63.3	(0.4)

**Manitoba**

	Actual				Seasonally Adjusted			Annual Change
	Dec 2004	Nov 2005	Dec 2005	Annual Change	Dec 2004	Nov 2005	Dec 2005	
Population ('000)	885.0	890.1	889.9	4.9	885.0	890.1	889.9	4.9
Labour Force ('000)	607.8	606.5	607.9	0.1	611.1	608.6	610.3	(0.8)
Employment ('000)	578.2	583.1	582.8	4.6	580.3	583.4	584.4	4.1
Unemployed ('000)	29.6	23.4	25.1	(4.5)	30.8	25.3	25.8	(5.0)
Unemployment Rate (%)	4.9	3.9	4.1	(0.8)	5.0	4.2	4.2	(0.8)
Participation Rate (%)	68.7	68.1	68.3	(0.4)	69.1	68.4	68.6	(0.5)
Employment Rate (%)	65.3	65.5	65.5	0.2	65.6	65.5	65.7	0.1

Population is for those 15 years of age and over.

Annual Change is in thousands or percentage points as shown in row headings.

**Employment Situation - December 2005**  
**Canada/Provinces**

**Saskatchewan**

	Actual				Seasonally Adjusted			Annual Change
	Dec 2004	Nov 2005	Dec 2005	Annual Change	Dec 2004	Nov 2005	Dec 2005	
Population ('000)	746.9	748.6	748.3	1.4	746.9	748.6	748.3	1.4
Labour Force ('000)	508.1	503.2	499.2	(8.9)	514.0	507.0	506.2	(7.8)
Employment ('000)	481.4	478.8	474.5	(6.9)	486.9	480.3	479.5	(7.4)
Unemployed ('000)	26.7	24.4	24.7	(2.0)	27.1	26.6	26.7	(0.4)
Unemployment Rate (%)	5.3	4.8	4.9	(0.4)	5.3	5.2	5.3	-
Participation Rate (%)	68.0	67.2	66.7	(1.3)	68.8	67.7	67.6	(1.2)
Employment Rate (%)	64.5	64.0	63.4	(1.1)	65.2	64.2	64.1	(1.1)

**Alberta**

	Actual				Seasonally Adjusted			Annual Change
	Dec 2004	Nov 2005	Dec 2005	Annual Change	Dec 2004	Nov 2005	Dec 2005	
Population ('000)	2,526.0	2,580.5	2,587.2	61.2	2,526.0	2,580.5	2,587.2	61.2
Labour Force ('000)	1,842.7	1,870.6	1,873.5	30.8	1,850.3	1,872.0	1,877.4	27.1
Employment ('000)	1,766.3	1,795.6	1,799.5	33.2	1,768.1	1,795.1	1,800.7	32.6
Unemployed ('000)	76.4	75.0	74.0	(2.4)	82.3	76.9	76.7	(5.6)
Unemployment Rate (%)	4.1	4.0	3.9	(0.2)	4.4	4.1	4.1	(0.3)
Participation Rate (%)	72.9	72.5	72.4	(0.5)	73.3	72.5	72.6	(0.7)
Employment Rate (%)	69.9	69.6	69.6	(0.3)	70.0	69.6	69.6	(0.4)

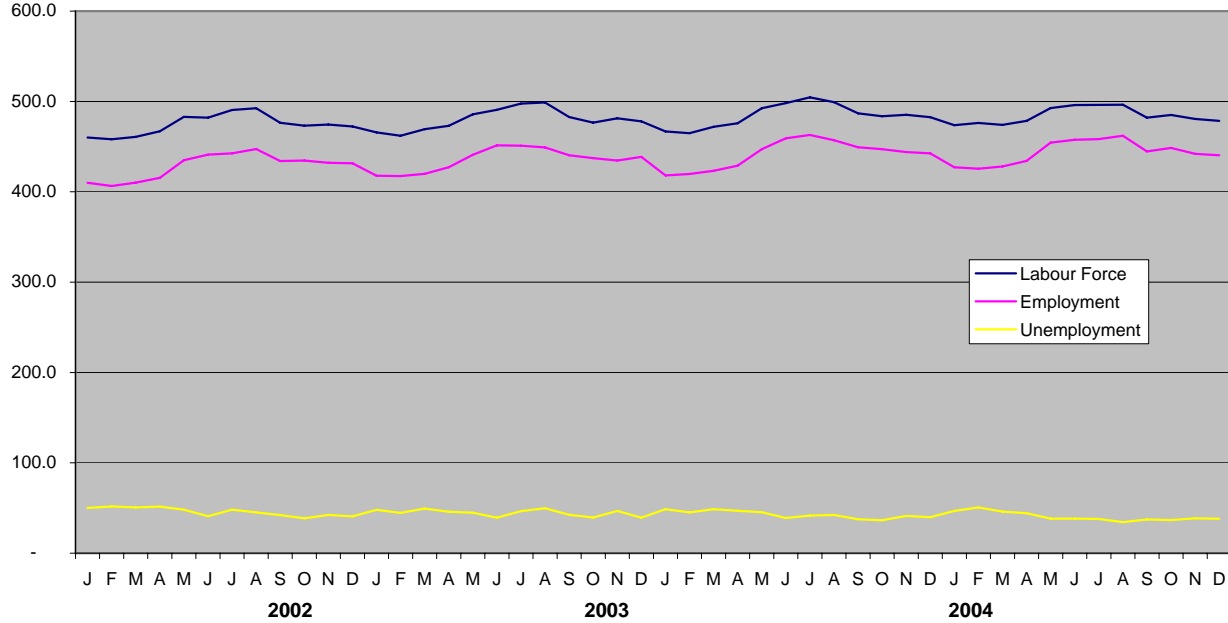
**British Columbia**

	Actual				Seasonally Adjusted			Annual Change
	Dec 2004	Nov 2005	Dec 2005	Annual Change	Dec 2004	Nov 2005	Dec 2005	
Population ('000)	3,414.1	3,473.2	3,478.3	64.2	3,414.1	3,473.2	3,478.3	64.2
Labour Force ('000)	2,214.1	2,272.2	2,271.1	57.0	2,228.2	2,278.9	2,285.2	57.0
Employment ('000)	2,089.7	2,168.0	2,171.5	81.8	2,089.5	2,166.5	2,169.2	79.7
Unemployed ('000)	124.4	104.1	99.6	(24.8)	138.8	112.4	116.1	(22.7)
Unemployment Rate (%)	5.6	4.6	4.4	(1.2)	6.2	4.9	5.1	(1.1)
Participation Rate (%)	64.9	65.4	65.3	0.4	65.3	65.6	65.7	0.4
Employment Rate (%)	61.2	62.4	62.4	1.2	61.2	62.4	62.4	1.2

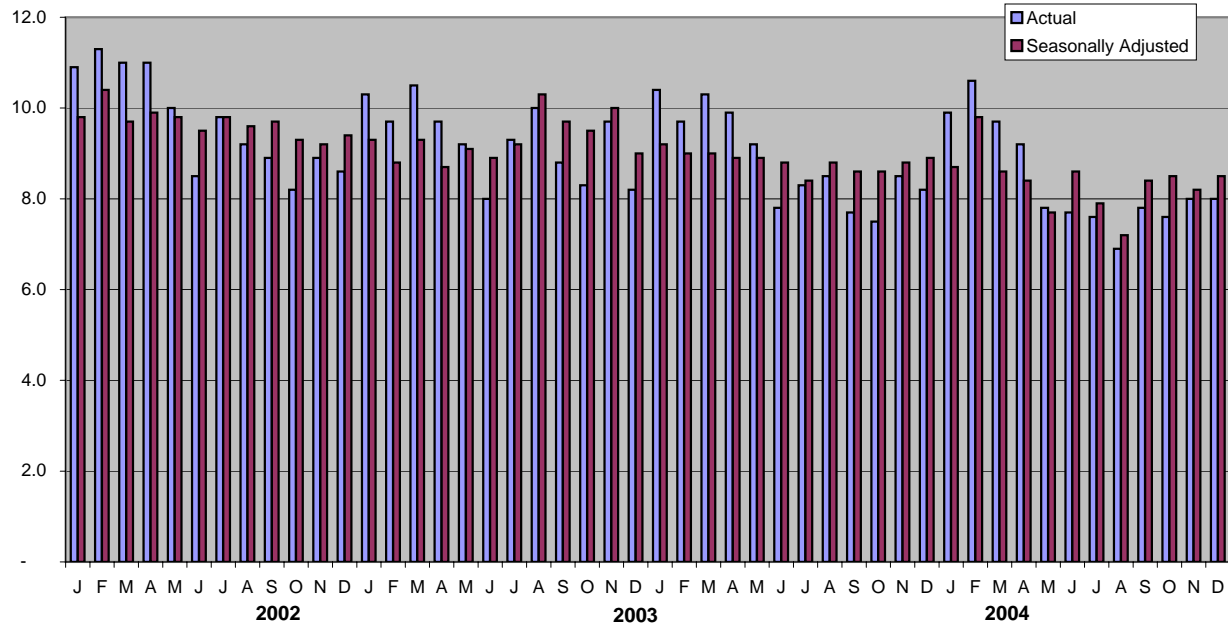
Population is for those 15 years of age and over.

Annual Change is in thousands or percentage points as shown in row headings.

**Nova Scotia Labour Force, Employment & Unemployment**  
 Actual 2002-2005



**Nova Scotia Unemployment Rate**  
 Actual & Seasonally Adjusted



**Employment Situation - December 2005**  
**Economic Regions/CMA**

(unadjusted - three month moving average)

	Canada				Nova Scotia			
	Dec 2004	Nov 2005	Dec 2005	Annual Change	Dec 2004	Nov 2005	Dec 2005	Annual Change
Population ('000)	25,571.4	25,927.5	25,958.3	386.9	758.5	761.6	761.8	3.3
Labour Force ('000)	17,183.8	17,355.3	17,335.7	151.9	483.8	482.6	481.5	(2.3)
Employment ('000)	16,041.4	16,297.1	16,285.6	244.2	444.6	445.1	443.7	(0.9)
Unemployed ('000)	1,142.3	1,058.1	1,050.1	(92.2)	39.2	37.5	37.8	(1.4)
Unemployment Rate (%)	6.6	6.1	6.1	(0.5)	8.1	7.8	7.9	(0.2)
Participation Rate (%)	67.2	66.9	66.8	(0.4)	63.8	63.4	63.2	(0.6)
Employment Rate (%)	62.7	62.9	62.7	-	58.6	58.4	58.2	(0.4)

	230 - Annapolis Valley				210 - Cape Breton			
	Dec 2004	Nov 2005	Dec 2005	Annual Change	Dec 2004	Nov 2005	Dec 2005	Annual Change
Population ('000)	99.0	99.3	99.3	0.3	116.9	116.5	116.0	(0.9)
Labour Force ('000)	64.8	61.8	62.5	(2.3)	57.2	66.4	64.8	7.6
Employment ('000)	60.6	57.0	57.5	(3.1)	48.5	56.6	55.4	6.9
Unemployed ('000)	4.2	4.8	5.0	0.8	8.7	9.8	9.4	0.7
Unemployment Rate (%)	6.5	7.8	8.0	1.5	15.2	14.8	14.5	(0.7)
Participation Rate (%)	65.5	62.2	62.9	(2.6)	48.9	57.0	55.9	7.0
Employment Rate (%)	61.2	57.4	57.9	(3.3)	41.5	48.6	47.8	6.3

	250 - Halifax County				Halifax Metro (CMA)			
	Dec 2004	Nov 2005	Dec 2005	Annual Change	Dec 2004	Nov 2005	Dec 2005	Annual Change
Population ('000)	309.2	312.1	313.5	4.3	308.8	311.8	312.1	3.3
Labour Force ('000)	217.3	213.8	214.3	(3.0)	217.2	215.5	213.8	(3.4)
Employment ('000)	205.1	203.2	203.2	(1.9)	205.4	205.3	203.2	(2.2)
Unemployed ('000)	12.2	10.6	11.1	(1.1)	11.7	10.2	10.6	(1.1)
Unemployment Rate (%)	5.6	5.0	5.2	(0.4)	5.4	4.7	5.0	(0.4)
Participation Rate (%)	70.3	68.5	68.4	(1.9)	70.3	69.1	68.5	(1.8)
Employment Rate (%)	66.3	65.1	64.8	(1.5)	66.5	65.8	65.1	(1.4)

	220 - North Shore				240 - Southern			
	Dec 2004	Nov 2005	Dec 2005	Annual Change	Dec 2004	Nov 2005	Dec 2005	Annual Change
Population ('000)	130.3	130.5	130.1	(0.2)	103.1	103.3	103.0	(0.1)
Labour Force ('000)	80.2	79.9	80.3	0.1	64.3	60.6	59.6	(4.7)
Employment ('000)	72.2	74.8	74.5	2.3	58.1	53.5	53.0	(5.1)
Unemployed ('000)	8.0	5.1	5.8	(2.2)	6.2	7.2	6.6	0.4
Unemployment Rate (%)	10.0	6.4	7.2	(2.8)	9.6	11.9	11.1	1.5
Participation Rate (%)	61.6	61.2	61.7	0.1	62.4	58.7	57.9	(4.5)
Employment Rate (%)	55.4	57.3	57.3	1.9	56.4	51.8	51.5	(4.9)

**Employment Situation - December 2005**  
**Job Tenure**

**Employment - Seasonally Adjusted (000's)**

	Total				Full-Time				Part-time			
	Dec 2004	Nov 2005	Dec 2005	Annual	Dec 2004	Nov 2005	Dec 2005	Annual	Dec 2004	Nov 2005	Dec 2005	Annual
				Change				Change				Change
<b>Canada</b>	16,063.1	16,297.7	16,295.6	232.5	13,098.7	13,325.3	13,361.0	262.3	2,964.4	2,972.4	2,934.6	(29.8)
<b>Newfoundland and Labrador</b>	216.0	217.6	211.1	(4.9)	183.2	183.5	176.3	(6.9)	32.7	34.0	34.8	2.1
<b>Prince Edward Island</b>	68.7	68.5	68.4	(0.3)	57.5	57.1	57.9	0.4	11.2	11.4	10.5	(0.7)
<b>Nova Scotia</b>	443.4	442.8	441.5	(1.9)	358.9	360.2	361.2	2.3	84.5	82.6	80.4	(4.1)
<b>New Brunswick</b>	352.9	351.5	356.2	3.3	297.1	296.3	295.0	(2.1)	55.8	55.3	61.2	5.4
<b>Quebec</b>	3,703.9	3,745.1	3,755.3	51.4	3,046.5	3,047.8	3,076.0	29.5	657.4	697.3	679.3	21.9
<b>Ontario</b>	6,353.5	6,447.0	6,429.3	75.8	5,183.2	5,299.6	5,310.0	126.8	1,170.3	1,147.3	1,119.3	(51.0)
<b>Manitoba</b>	580.3	583.4	584.4	4.1	470.8	469.5	464.2	(6.6)	109.5	113.9	120.2	10.7
<b>Saskatchewan</b>	486.9	480.3	479.5	(7.4)	391.4	387.4	389.3	(2.1)	95.5	93.0	90.2	(5.3)
<b>Alberta</b>	1,768.1	1,795.1	1,800.7	32.6	1,445.5	1,499.6	1,499.0	53.5	322.6	295.4	301.6	(21.0)
<b>British Columbia</b>	2,089.5	2,166.5	2,169.2	79.7	1,663.9	1,724.3	1,731.3	67.4	425.6	442.3	437.8	12.2

**Employment - Actual (000's)**

	Total				Full-Time				Part-time			
	Dec 2004	Nov 2005	Dec 2005	Annual	Dec 2004	Nov 2005	Dec 2005	Annual	Dec 2004	Nov 2005	Dec 2005	Annual
				Change				Change				Change
<b>Canada</b>	15,989.6	16,295.0	16,231.5	241.9	12,875.3	13,188.1	13,151.1	275.8	3,114.3	3,106.9	3,080.4	(33.9)
<b>Newfoundland and Labrador</b>	208.9	214.2	203.9	(5.0)	176.5	180.7	169.3	(7.2)	32.4	33.5	34.6	2.2
<b>Prince Edward Island</b>	65.6	67.0	65.8	0.2	53.7	55.2	54.6	0.9	11.9	11.8	11.1	(0.8)
<b>Nova Scotia</b>	442.6	442.1	440.4	(2.2)	352.0	355.2	354.1	2.1	90.6	86.9	86.2	(4.4)
<b>New Brunswick</b>	346.1	352.2	350.8	4.7	287.7	294.4	286.6	(1.1)	58.4	57.8	64.3	5.9
<b>Quebec</b>	3,665.0	3,735.1	3,721.0	56.0	2,966.2	2,993.1	3,000.0	33.8	698.7	742.0	721.0	22.3
<b>Ontario</b>	6,345.8	6,458.8	6,421.2	75.4	5,115.2	5,262.5	5,247.7	132.5	1,230.6	1,196.3	1,173.5	(57.1)
<b>Manitoba</b>	578.2	583.1	582.8	4.6	463.3	465.0	455.9	(7.4)	115.0	118.2	126.9	11.9
<b>Saskatchewan</b>	481.4	478.8	474.5	(6.9)	381.0	382.3	380.8	(0.2)	100.4	96.5	93.7	(6.7)
<b>Alberta</b>	1,766.3	1,795.6	1,799.5	33.2	1,433.9	1,487.9	1,486.4	52.5	332.4	307.7	313.1	(19.3)
<b>British Columbia</b>	2,089.7	2,168.0	2,171.5	81.8	1,645.8	1,711.7	1,715.6	69.8	443.9	456.3	455.8	11.9



**Employment Situation - December 2005  
Youth Statistics**

**15-24 Age Group - Seasonally Adjusted**

	Labour Force - 000's				Employment - 000's				Unemployment - %			
	Dec 2004	Nov 2005	Dec 2005	Annual Change	Dec 2004	Nov 2005	Dec 2005	Annual Change	Dec 2004	Nov 2005	Dec 2005	Annual Change
<b>Canada</b>	2,845.4	2,825.3	2,849.6	4.2	2,484.9	2,502.8	2,512.4	27.5	12.7	11.4	11.8	(0.9)
<b>Newfoundland and Labrador</b>	38.5	38.7	36.4	(2.1)	31.2	30.4	28.3	(2.9)	19.0	21.4	22.3	3.3
<b>Prince Edward Island</b>	13.5	13.4	13.4	(0.1)	11.3	11.6	11.4	0.1	16.3	13.4	14.9	(1.4)
<b>Nova Scotia</b>	84.5	80.4	81.1	(3.4)	71.2	70.0	70.4	(0.8)	15.7	12.9	13.3	(2.4)
<b>New Brunswick</b>	63.7	62.8	63.8	0.1	54.8	54.3	54.7	(0.1)	14.0	13.5	14.3	0.3
<b>Quebec</b>	643.3	625.6	635.0	(8.3)	555.2	545.9	550.7	(4.5)	13.7	12.7	13.3	(0.4)
<b>Ontario</b>	1,092.5	1,091.1	1,098.3	5.8	938.7	945.9	950.6	11.9	14.1	13.3	13.4	(0.7)
<b>Manitoba</b>	108.2	108.6	110.1	1.9	96.9	100.4	101.0	4.1	10.4	7.6	8.3	(2.1)
<b>Saskatchewan</b>	97.0	93.7	94.2	(2.8)	87.9	83.3	82.6	(5.3)	9.4	11.1	12.2	2.8
<b>Alberta</b>	345.6	337.6	338.5	(7.1)	319.2	313.2	314.5	(4.7)	7.6	7.2	7.1	(0.5)
<b>British Columbia</b>	358.6	373.4	378.8	20.2	318.5	347.8	348.2	29.7	11.2	6.9	8.1	(3.1)

**15-24 Age Group - Actual**

	Labour Force - 000's				Employment - 000's				Unemployment - %			
	Dec 2004	Nov 2005	Dec 2005	Annual Change	Dec 2004	Nov 2005	Dec 2005	Annual Change	Dec 2004	Nov 2005	Dec 2005	Annual Change
<b>Canada</b>	2,713.8	2,733.6	2,731.3	17.5	2,410.6	2,445.2	2,449.2	38.6	11.2	10.6	10.3	(0.9)
<b>Newfoundland and Labrador</b>	34.8	36.0	32.8	(2.0)	28.9	28.5	26.4	(2.5)	17.0	21.1	19.8	2.8
<b>Prince Edward Island</b>	12.2	12.4	12.1	(0.1)	10.0	10.7	10.2	0.2	18.0	13.7	15.7	(2.3)
<b>Nova Scotia</b>	80.4	77.5	77.8	(2.6)	68.4	68.0	68.4	-	14.9	12.3	12.1	(2.8)
<b>New Brunswick</b>	59.5	60.0	59.8	0.3	51.8	52.1	52.3	0.5	12.9	13.2	12.7	(0.2)
<b>Quebec</b>	604.2	607.5	601.3	(2.9)	529.6	532.5	527.2	(2.4)	12.3	12.3	12.3	-
<b>Ontario</b>	1,037.9	1,047.0	1,046.6	8.7	913.5	922.3	929.1	15.6	12.0	11.9	11.2	(0.8)
<b>Manitoba</b>	105.8	106.2	107.9	2.1	94.9	98.3	98.9	4.0	10.3	7.4	8.3	(2.0)
<b>Saskatchewan</b>	92.1	89.5	88.4	(3.7)	84.1	80.2	79.0	(5.1)	8.7	10.4	10.5	1.8
<b>Alberta</b>	338.1	331.7	333.1	(5.0)	312.5	307.9	309.2	(3.3)	7.6	7.2	7.2	(0.4)
<b>British Columbia</b>	348.8	365.8	371.4	22.6	316.7	344.6	348.4	31.7	9.2	5.8	6.2	(3.0)



## Employment Situation - December 2005

### CMA Data

(Unadjusted - three month moving average)

	Unemployment Rate - %				Employment Rate - %				Participation Rate - %			
	Dec 2004	Nov 2005	Dec 2005	Annual Change	Dec 2004	Nov 2005	Dec 2005	Annual Change	Dec 2004	Nov 2005	Dec 2005	Annual Change
St. John's, Newfoundland and Labrador	8.2	7.5	7.6	(0.6)	60.7	59.3	59.3	(1.4)	66.3	64.1	64.2	(2.1)
Halifax	5.6	5.0	5.2	(0.4)	67.1	65.1	64.8	(2.3)	71.0	68.5	68.4	(2.6)
Saint John, New Brunswick	6.2	6.5	5.5	(0.7)	61.4	58.3	59.9	(1.5)	65.4	62.3	63.4	(2.0)
Saguenay	10.6	10.9	10.1	(0.5)	55.9	53.9	54.3	(1.6)	62.5	60.4	60.4	(2.1)
Québec	5.0	3.8	4.0	(1.0)	61.7	63.4	62.8	1.1	65.0	65.9	65.4	0.4
Trois-Rivières	9.4	8.2	8.8	(0.6)	54.6	57.6	57.7	3.1	60.3	62.7	63.2	2.9
Sherbrooke	7.0	7.0	6.7	(0.3)	61.3	59.5	60.0	(1.3)	65.9	64.1	64.4	(1.5)
Montréal	8.8	8.8	9.1	0.3	61.3	61.4	61.2	(0.1)	67.2	67.3	67.4	0.2
Ottawa-Gatineau	5.7	5.8	7.2	1.5	67.6	66.5	57.1	(10.5)	71.7	70.6	61.6	(10.1)
Sudbury	7.0	7.5	6.0	(1.0)	62.0	56.9	65.1	3.1	66.7	61.5	69.3	2.6
Oshawa	5.1	5.7	5.7	0.6	65.9	64.9	64.9	(1.0)	69.5	68.9	68.8	(0.7)
Toronto	7.1	6.0	5.3	(1.8)	64.1	65.1	64.1	-	68.9	69.3	67.7	(1.2)
Hamilton	5.3	5.4	6.4	1.1	64.7	63.6	57.8	(6.9)	68.3	67.2	61.8	(6.5)
St. Catharines - Niagara	6.1	6.0	6.3	0.2	60.3	58.6	63.4	3.1	64.2	62.4	67.7	3.5
London	6.2	6.5	6.4	0.2	65.3	63.8	61.3	(4.0)	69.6	68.3	65.5	(4.1)
Windsor	9.2	6.5	5.0	(4.2)	61.3	60.9	67.9	6.6	67.5	65.1	71.5	4.0
Kitchener	3.6	5.3	5.6	2.0	67.1	67.7	59.7	(7.4)	69.7	71.5	63.2	(6.5)
Thunder Bay	7.8	5.4	3.9	(3.9)	61.6	59.9	66.0	4.4	66.8	63.3	68.7	1.9
Winnipeg	4.9	4.3	4.8	(0.1)	67.5	65.6	66.3	(1.2)	71.0	68.6	69.7	(1.3)
Regina	4.6	4.7	5.1	0.5	69.4	66.5	65.3	(4.1)	72.7	69.8	68.8	(3.9)
Saskatoon	5.3	5.3	4.5	(0.8)	67.3	65.6	70.6	3.3	71.1	69.3	73.9	2.8
Calgary	4.7	4.4	4.1	(0.6)	69.9	70.1	66.2	(3.7)	73.3	73.3	69.0	(4.3)
Edmonton	4.6	3.9	4.1	(0.5)	69.6	67.1	63.7	(5.9)	73.0	69.8	66.4	(6.6)
Vancouver	5.9	4.4	4.1	(1.8)	62.8	63.3	61.7	(1.1)	66.8	66.2	64.3	(2.5)
Victoria	5.2	4.4	-	(5.2)	59.3	62.4	-	(59.3)	62.5	65.3	-	(62.5)