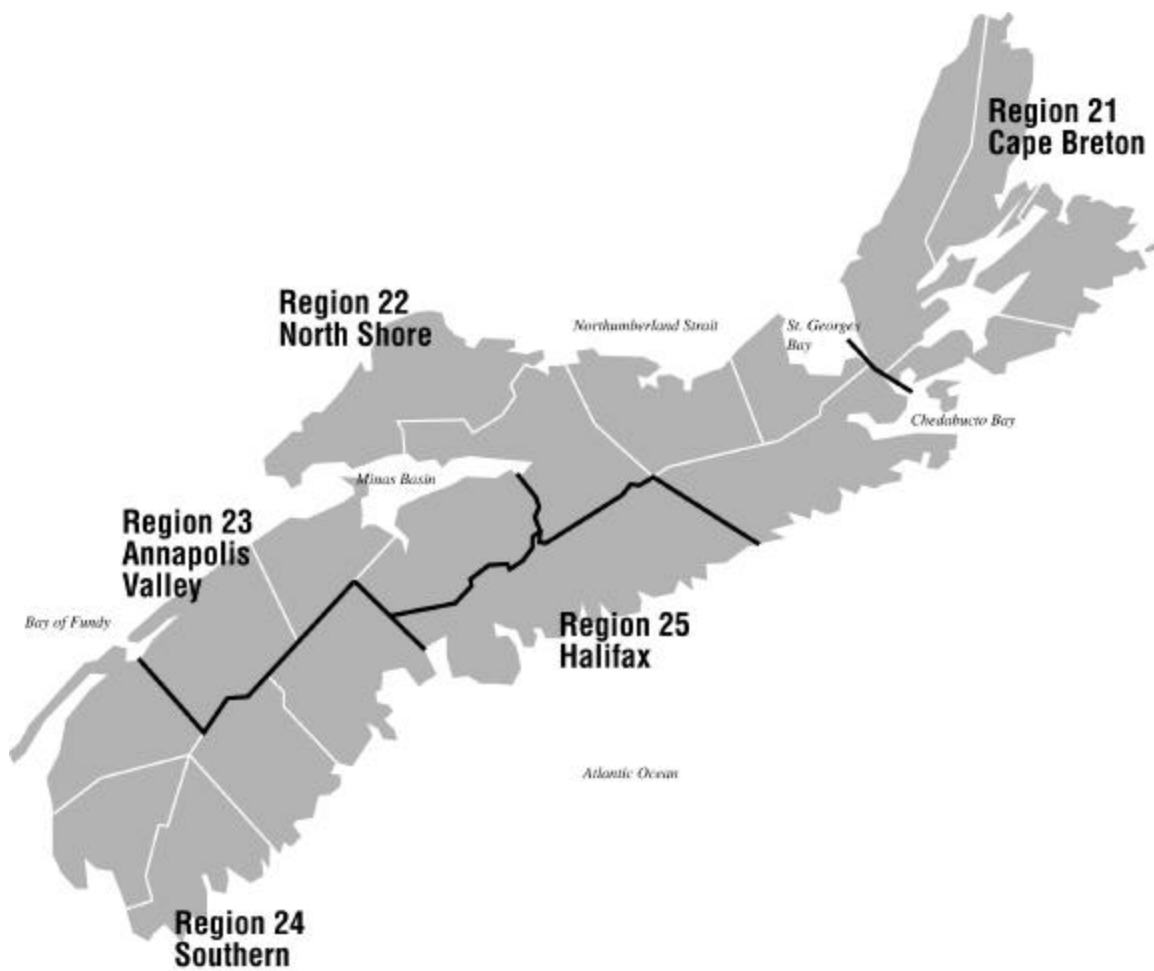


Employment Situation

JANUARY 2006



About the Employment Situation Report

The Employment Situation Report is produced monthly by the Statistics Division of the Nova Scotia Department of Finance. It is based on the Labour Force Survey (LFS) which is a household survey carried out monthly by Statistics Canada. This publication contains summary tables of selected labour force characteristics including labour force, employment, unemployment, unemployment rate, and participation rate for Canada, the provinces, and CMAs. The publication emphasizes the Nova Scotia employment situation and includes tables for Nova Scotia, its economic regions, and the Metropolitan Halifax area. The report is available on the internet at:

<http://www.gov.ns.ca/finance/publish/pub19.htm>

The LFS survey is a sample of individuals who are representative of the civilian, non-institutionalised population 15 years of age or older in Canada's ten provinces. Specifically excluded from the survey's coverage are residents of the territories, persons living on Indian Reserves, full-time members of the Canadian Armed Forces and institutional residents. These groups represent an exclusion of approximately 2% of the population aged 15 or over. As of April 2005 the sample size has been approximately 51,072 households across Canada and 2,873 in Nova Scotia.

Since its inception in 1945, the objectives of the LFS have been to divide the working-age population into three mutually exclusive classifications--employed, unemployed and not in the labour force--and to provide descriptive and explanatory data on each of these categories. Data from the survey provide information on major labour market trends such as shifts in employment across industrial sectors, hours worked, labour force participation and employment rates.

Release Dates - 2006:

| Data for: | Release date: |
|------------------|----------------------|
| January 2006 | February 10, 2006 |
| February 2006 | March 10, 2006 |
| March 2006 | April 7, 2006 |
| April 2006 | May 5, 2006 |
| May 2006 | June 9, 2006 |
| June 2006 | July 7, 2006 |
| July 2006 | August 4, 2006 |
| August 2006 | September 8, 2006 |
| September 2006 | October 6, 2006 |
| October 2006 | November 3, 2006 |
| November 2006 | December 1, 2006 |

Employment Situation - January 2006
Canada/Provinces

Canada

| | Actual | | | | Seasonally Adjusted | | | Annual Change |
|------------------------|----------|----------|----------|---------------|---------------------|----------|----------|---------------|
| | Jan 2005 | Dec 2005 | Jan 2006 | Annual Change | Jan 2005 | Dec 2005 | Jan 2006 | |
| Population ('000) | 25,623.4 | 25,986.9 | 26,020.0 | 396.6 | 25,623.4 | 25,986.9 | 26,020.0 | 396.6 |
| Labour Force ('000) | 16,952.2 | 17,287.9 | 17,179.1 | 226.9 | 17,255.0 | 17,429.9 | 17,473.5 | 218.5 |
| Employment ('000) | 15,678.1 | 16,228.1 | 15,949.1 | 271.0 | 16,051.7 | 16,294.7 | 16,321.0 | 269.3 |
| Unemployed ('000) | 1,274.1 | 1,059.9 | 1,230.0 | (44.1) | 1,203.3 | 1,135.2 | 1,152.5 | (50.8) |
| Unemployment Rate (%) | 7.5 | 6.1 | 7.2 | (0.3) | 7.0 | 6.5 | 6.6 | (0.4) |
| Participation Rate (%) | 66.2 | 66.5 | 66.0 | (0.2) | 67.3 | 67.1 | 67.2 | (0.1) |
| Employment Rate (%) | 61.2 | 62.4 | 61.3 | 0.1 | 62.6 | 62.7 | 62.7 | 0.1 |

Nova Scotia

| | Actual | | | | Seasonally Adjusted | | | Annual Change |
|------------------------|----------|----------|----------|---------------|---------------------|----------|----------|---------------|
| | Jan 2005 | Dec 2005 | Jan 2006 | Annual Change | Jan 2005 | Dec 2005 | Jan 2006 | |
| Population ('000) | 759.2 | 762.0 | 762.2 | 3.0 | 759.2 | 762.0 | 762.2 | 3.0 |
| Labour Force ('000) | 473.8 | 478.0 | 466.8 | (7.0) | 487.0 | 482.3 | 480.4 | (6.6) |
| Employment ('000) | 426.8 | 439.8 | 425.0 | (1.8) | 444.9 | 441.3 | 442.8 | (2.1) |
| Unemployed ('000) | 46.9 | 38.2 | 41.9 | (5.0) | 42.1 | 41.0 | 37.6 | (4.5) |
| Unemployment Rate (%) | 9.9 | 8.0 | 9.0 | (0.9) | 8.6 | 8.5 | 7.8 | (0.8) |
| Participation Rate (%) | 62.4 | 62.7 | 61.2 | (1.2) | 64.1 | 63.3 | 63.0 | (1.1) |
| Employment Rate (%) | 56.2 | 57.7 | 55.8 | (0.4) | 58.6 | 57.9 | 58.1 | (0.5) |

Newfoundland and Labrador

| | Actual | | | | Seasonally Adjusted | | | Annual Change |
|------------------------|----------|----------|----------|---------------|---------------------|----------|----------|---------------|
| | Jan 2005 | Dec 2005 | Jan 2006 | Annual Change | Jan 2005 | Dec 2005 | Jan 2006 | |
| Population ('000) | 430.1 | 429.2 | 429.0 | (1.1) | 430.1 | 429.2 | 429.0 | (1.1) |
| Labour Force ('000) | 238.7 | 241.8 | 238.8 | 0.1 | 252.3 | 249.4 | 250.8 | (1.5) |
| Employment ('000) | 199.3 | 203.5 | 193.9 | (5.4) | 215.5 | 210.9 | 209.3 | (6.2) |
| Unemployed ('000) | 39.4 | 38.3 | 44.9 | 5.5 | 36.8 | 38.5 | 41.5 | 4.7 |
| Unemployment Rate (%) | 16.5 | 15.8 | 18.8 | 2.3 | 14.6 | 15.4 | 16.5 | 1.9 |
| Participation Rate (%) | 55.5 | 56.3 | 55.7 | 0.2 | 58.7 | 58.1 | 58.5 | (0.2) |
| Employment Rate (%) | 46.3 | 47.4 | 45.2 | (1.1) | 50.1 | 49.1 | 48.8 | (1.3) |

Prince Edward Island

| | Actual | | | | Seasonally Adjusted | | | Annual Change |
|------------------------|----------|----------|----------|---------------|---------------------|----------|----------|---------------|
| | Jan 2005 | Dec 2005 | Jan 2006 | Annual Change | Jan 2005 | Dec 2005 | Jan 2006 | |
| Population ('000) | 111.1 | 112.0 | 111.9 | 0.8 | 111.1 | 112.0 | 111.9 | 0.8 |
| Labour Force ('000) | 73.2 | 75.0 | 73.5 | 0.3 | 76.8 | 77.2 | 77.0 | 0.2 |
| Employment ('000) | 62.8 | 65.9 | 63.0 | 0.2 | 68.7 | 68.6 | 68.7 | - |
| Unemployed ('000) | 10.3 | 9.1 | 10.5 | 0.2 | 8.1 | 8.6 | 8.3 | 0.2 |
| Unemployment Rate (%) | 14.1 | 12.1 | 14.3 | 0.2 | 10.5 | 11.1 | 10.8 | 0.3 |
| Participation Rate (%) | 65.9 | 67.0 | 65.7 | (0.2) | 69.1 | 68.9 | 68.8 | (0.3) |
| Employment Rate (%) | 56.5 | 58.8 | 56.3 | (0.2) | 61.8 | 61.3 | 61.4 | (0.4) |

Population is for those 15 years of age and over.

Annual Change is in thousands or percentage points as shown in row headings.

Employment Situation - January 2006
Canada/Provinces

New Brunswick

| | Actual | | | | Seasonally Adjusted | | | Annual Change |
|------------------------|----------|----------|----------|---------------|---------------------|----------|----------|---------------|
| | Jan 2005 | Dec 2005 | Jan 2006 | Annual Change | Jan 2005 | Dec 2005 | Jan 2006 | |
| Population ('000) | 609.1 | 611.4 | 611.3 | 2.2 | 609.1 | 611.4 | 611.3 | 2.2 |
| Labour Force ('000) | 374.8 | 385.0 | 380.1 | 5.3 | 387.9 | 393.1 | 393.6 | 5.7 |
| Employment ('000) | 332.9 | 349.9 | 342.9 | 10.0 | 349.9 | 355.3 | 358.7 | 8.8 |
| Unemployed ('000) | 42.0 | 35.1 | 37.2 | (4.8) | 38.0 | 37.8 | 34.9 | (3.1) |
| Unemployment Rate (%) | 11.2 | 9.1 | 9.8 | (1.4) | 9.8 | 9.6 | 8.9 | (0.9) |
| Participation Rate (%) | 61.5 | 63.0 | 62.2 | 0.7 | 63.7 | 64.3 | 64.4 | 0.7 |
| Employment Rate (%) | 54.7 | 57.2 | 56.1 | 1.4 | 57.4 | 58.1 | 58.7 | 1.3 |

Quebec

| | Actual | | | | Seasonally Adjusted | | | Annual Change |
|------------------------|----------|----------|----------|---------------|---------------------|----------|----------|---------------|
| | Jan 2005 | Dec 2005 | Jan 2006 | Annual Change | Jan 2005 | Dec 2005 | Jan 2006 | |
| Population ('000) | 6,149.2 | 6,215.9 | 6,221.8 | 72.6 | 6,149.2 | 6,215.9 | 6,221.8 | 72.6 |
| Labour Force ('000) | 3,976.4 | 4,054.2 | 4,023.5 | 47.1 | 4,047.3 | 4,090.4 | 4,092.1 | 44.8 |
| Employment ('000) | 3,599.5 | 3,718.2 | 3,639.1 | 39.6 | 3,705.2 | 3,755.0 | 3,746.3 | 41.1 |
| Unemployed ('000) | 377.0 | 336.0 | 384.4 | 7.4 | 342.2 | 335.3 | 345.7 | 3.5 |
| Unemployment Rate (%) | 9.5 | 8.3 | 9.6 | 0.1 | 8.5 | 8.2 | 8.4 | (0.1) |
| Participation Rate (%) | 64.7 | 65.2 | 64.7 | - | 65.8 | 65.8 | 65.8 | - |
| Employment Rate (%) | 58.5 | 59.8 | 58.5 | - | 60.3 | 60.4 | 60.2 | (0.1) |

Ontario

| | Actual | | | | Seasonally Adjusted | | | Annual Change |
|------------------------|----------|----------|----------|---------------|---------------------|----------|----------|---------------|
| | Jan 2005 | Dec 2005 | Jan 2006 | Annual Change | Jan 2005 | Dec 2005 | Jan 2006 | |
| Population ('000) | 9,984.1 | 10,152.8 | 10,165.9 | 181.8 | 9,984.1 | 10,152.8 | 10,165.9 | 181.8 |
| Labour Force ('000) | 6,666.9 | 6,806.4 | 6,786.4 | 119.5 | 6,781.8 | 6,859.6 | 6,897.4 | 115.6 |
| Employment ('000) | 6,217.0 | 6,427.1 | 6,337.6 | 120.6 | 6,327.1 | 6,433.4 | 6,449.0 | 121.9 |
| Unemployed ('000) | 450.0 | 379.3 | 448.8 | (1.2) | 454.7 | 426.2 | 448.4 | (6.3) |
| Unemployment Rate (%) | 6.7 | 5.6 | 6.6 | (0.1) | 6.7 | 6.2 | 6.5 | (0.2) |
| Participation Rate (%) | 66.8 | 67.0 | 66.8 | - | 67.9 | 67.6 | 67.8 | (0.1) |
| Employment Rate (%) | 62.3 | 63.3 | 62.3 | - | 63.4 | 63.4 | 63.4 | - |

Manitoba

| | Actual | | | | Seasonally Adjusted | | | Annual Change |
|------------------------|----------|----------|----------|---------------|---------------------|----------|----------|---------------|
| | Jan 2005 | Dec 2005 | Jan 2006 | Annual Change | Jan 2005 | Dec 2005 | Jan 2006 | |
| Population ('000) | 885.6 | 889.9 | 889.8 | 4.2 | 885.6 | 889.9 | 889.8 | 4.2 |
| Labour Force ('000) | 601.6 | 607.1 | 603.3 | 1.7 | 610.8 | 609.3 | 612.9 | 2.1 |
| Employment ('000) | 567.9 | 581.9 | 574.1 | 6.2 | 579.7 | 583.6 | 586.3 | 6.6 |
| Unemployed ('000) | 33.6 | 25.2 | 29.2 | (4.4) | 31.2 | 25.7 | 26.6 | (4.6) |
| Unemployment Rate (%) | 5.6 | 4.2 | 4.8 | (0.8) | 5.1 | 4.2 | 4.3 | (0.8) |
| Participation Rate (%) | 67.9 | 68.2 | 67.8 | (0.1) | 69.0 | 68.5 | 68.9 | (0.1) |
| Employment Rate (%) | 64.1 | 65.4 | 64.5 | 0.4 | 65.5 | 65.6 | 65.9 | 0.4 |

Population is for those 15 years of age and over.

Annual Change is in thousands or percentage points as shown in row headings.

Employment Situation - January 2006
Canada/Provinces

Saskatchewan

| | Actual | | | | Seasonally Adjusted | | | Annual Change |
|------------------------|----------|----------|----------|---------------|---------------------|----------|----------|---------------|
| | Jan 2005 | Dec 2005 | Jan 2006 | Annual Change | Jan 2005 | Dec 2005 | Jan 2006 | |
| Population ('000) | 747.3 | 748.2 | 747.7 | 0.4 | 747.3 | 748.2 | 747.7 | 0.4 |
| Labour Force ('000) | 501.6 | 499.1 | 500.1 | (1.5) | 511.1 | 506.3 | 509.3 | (1.8) |
| Employment ('000) | 473.4 | 474.5 | 470.8 | (2.6) | 486.5 | 479.7 | 482.9 | (3.6) |
| Unemployed ('000) | 28.1 | 24.6 | 29.3 | 1.2 | 24.6 | 26.6 | 26.4 | 1.8 |
| Unemployment Rate (%) | 5.6 | 4.9 | 5.9 | 0.3 | 4.8 | 5.3 | 5.2 | 0.4 |
| Participation Rate (%) | 67.1 | 66.7 | 66.9 | (0.2) | 68.4 | 67.7 | 68.1 | (0.3) |
| Employment Rate (%) | 63.3 | 63.4 | 63.0 | (0.3) | 65.1 | 64.1 | 64.6 | (0.5) |

Alberta

| | Actual | | | | Seasonally Adjusted | | | Annual Change |
|------------------------|----------|----------|----------|---------------|---------------------|----------|----------|---------------|
| | Jan 2005 | Dec 2005 | Jan 2006 | Annual Change | Jan 2005 | Dec 2005 | Jan 2006 | |
| Population ('000) | 2,529.5 | 2,587.2 | 2,596.6 | 67.1 | 2,529.5 | 2,587.2 | 2,596.6 | 67.1 |
| Labour Force ('000) | 1,828.5 | 1,873.6 | 1,854.1 | 25.6 | 1,851.1 | 1,879.5 | 1,875.5 | 24.4 |
| Employment ('000) | 1,740.5 | 1,798.6 | 1,780.2 | 39.7 | 1,771.8 | 1,799.8 | 1,810.2 | 38.4 |
| Unemployed ('000) | 88.0 | 75.0 | 73.9 | (14.1) | 79.3 | 79.7 | 65.4 | (13.9) |
| Unemployment Rate (%) | 4.8 | 4.0 | 4.0 | (0.8) | 4.3 | 4.2 | 3.5 | (0.8) |
| Participation Rate (%) | 72.3 | 72.4 | 71.4 | (0.9) | 73.2 | 72.6 | 72.2 | (1.0) |
| Employment Rate (%) | 68.8 | 69.5 | 68.6 | (0.2) | 70.0 | 69.6 | 69.7 | (0.3) |

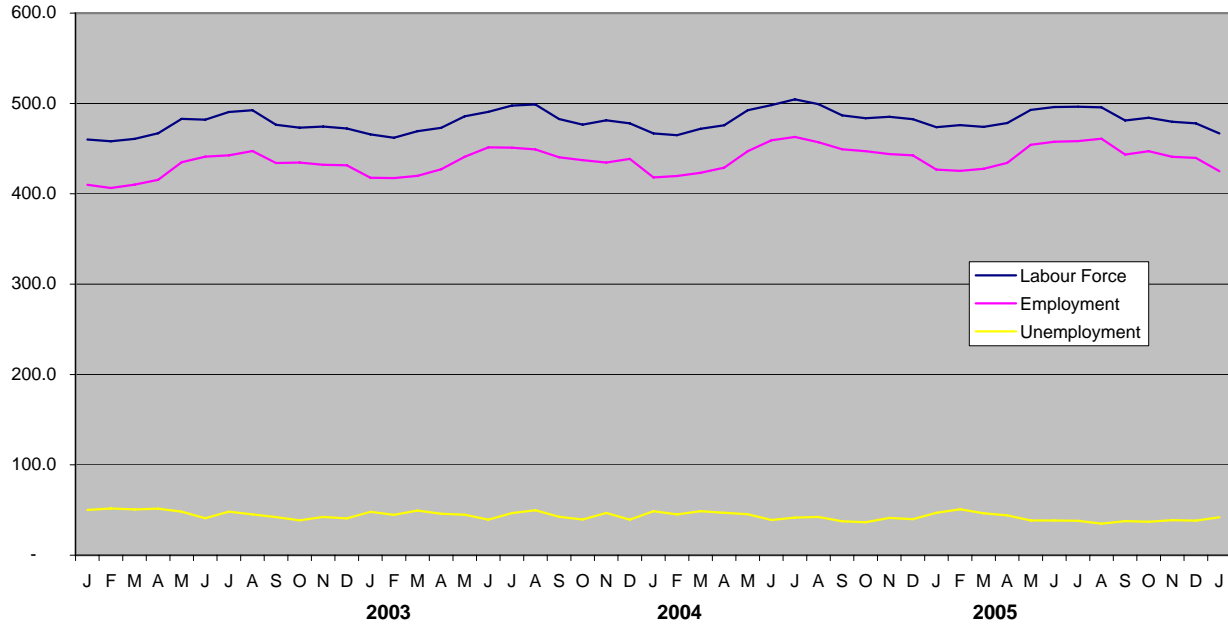
British Columbia

| | Actual | | | | Seasonally Adjusted | | | Annual Change |
|------------------------|----------|----------|----------|---------------|---------------------|----------|----------|---------------|
| | Jan 2005 | Dec 2005 | Jan 2006 | Annual Change | Jan 2005 | Dec 2005 | Jan 2006 | |
| Population ('000) | 3,418.1 | 3,478.3 | 3,483.8 | 65.7 | 3,418.1 | 3,478.3 | 3,483.8 | 65.7 |
| Labour Force ('000) | 2,216.7 | 2,267.7 | 2,252.5 | 35.8 | 2,248.9 | 2,282.9 | 2,284.5 | 35.6 |
| Employment ('000) | 2,058.0 | 2,168.6 | 2,122.5 | 64.5 | 2,102.4 | 2,167.1 | 2,166.9 | 64.5 |
| Unemployed ('000) | 158.8 | 99.0 | 130.0 | (28.8) | 146.5 | 115.8 | 117.6 | (28.9) |
| Unemployment Rate (%) | 7.2 | 4.4 | 5.8 | (1.4) | 6.5 | 5.1 | 5.1 | (1.4) |
| Participation Rate (%) | 64.9 | 65.2 | 64.7 | (0.2) | 65.8 | 65.6 | 65.6 | (0.2) |
| Employment Rate (%) | 60.2 | 62.3 | 60.9 | 0.7 | 61.5 | 62.3 | 62.2 | 0.7 |

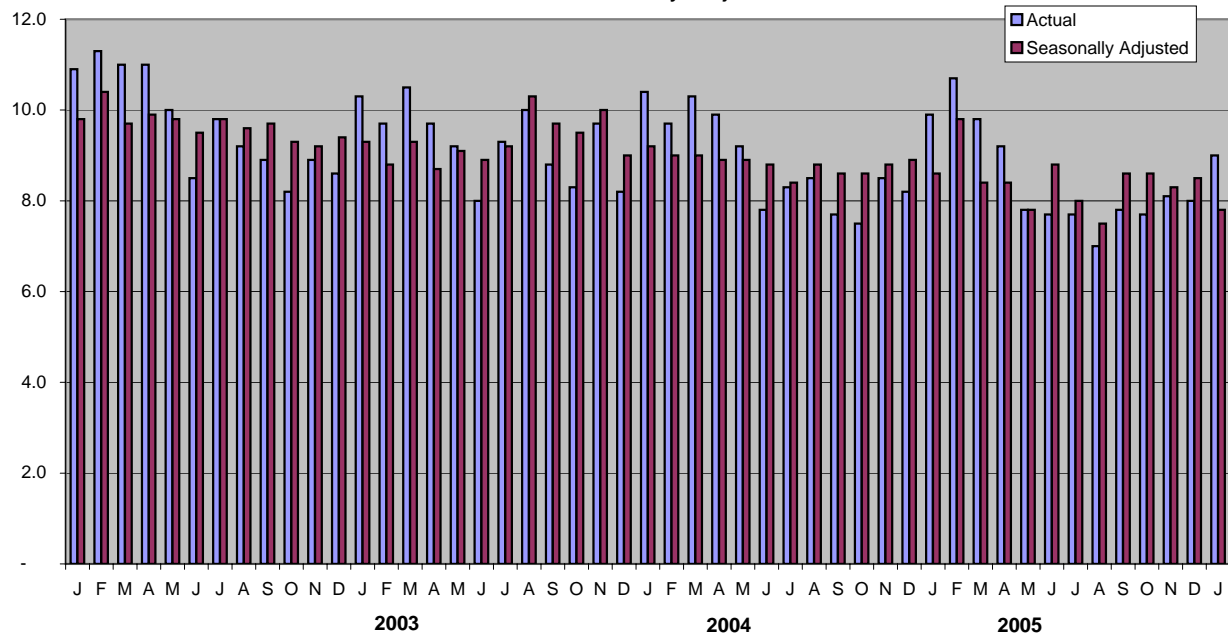
Population is for those 15 years of age and over.

Annual Change is in thousands or percentage points as shown in row headings.

Nova Scotia Labour Force, Employment & Unemployment
 Actual 2002-2006



Nova Scotia Unemployment Rate
 Actual & Seasonally Adjusted



Employment Situation - January 2006
Economic Regions/CMA
(unadjusted - three month moving average)

| | Canada | | | | Nova Scotia | | | |
|------------------------|---------------|----------|----------|---------------|--------------------|----------|----------|---------------|
| | Jan 2005 | Dec 2005 | Jan 2006 | Annual Change | Jan 2005 | Dec 2005 | Jan 2006 | Annual Change |
| Population ('000) | 25,597.2 | 25,958.3 | 25,988.8 | 391.6 | 758.8 | 761.8 | 762.0 | 3.2 |
| Labour Force ('000) | 17,086.8 | 17,336.5 | 17,266.6 | 179.8 | 480.4 | 480.7 | 474.9 | (5.5) |
| Employment ('000) | 15,888.7 | 16,284.9 | 16,157.4 | 268.7 | 437.5 | 442.6 | 435.3 | (2.2) |
| Unemployed ('000) | 1,198.2 | 1,051.6 | 1,109.2 | (89.0) | 42.9 | 38.0 | 39.6 | (3.3) |
| Unemployment Rate (%) | 7.0 | 6.1 | 6.4 | (0.6) | 8.9 | 7.9 | 8.3 | (0.6) |
| Participation Rate (%) | 66.8 | 66.8 | 66.4 | (0.4) | 63.3 | 63.1 | 62.3 | (1.0) |
| Employment Rate (%) | 62.1 | 62.7 | 62.2 | 0.1 | 57.7 | 58.1 | 57.1 | (0.6) |

| | 1230 - Annapolis Valley | | | | 1210 - Cape Breton | | | |
|------------------------|--------------------------------|----------|----------|---------------|---------------------------|----------|----------|---------------|
| | Jan 2005 | Dec 2005 | Jan 2006 | Annual Change | Jan 2005 | Dec 2005 | Jan 2006 | Annual Change |
| Population ('000) | 99.1 | 99.5 | 99.5 | 0.4 | 117.8 | 117.2 | 117.2 | (0.6) |
| Labour Force ('000) | 63.6 | 62.6 | 62.2 | (1.4) | 57.3 | 65.4 | 62.9 | 5.6 |
| Employment ('000) | 58.4 | 57.5 | 56.6 | (1.8) | 48.3 | 55.9 | 53.8 | 5.5 |
| Unemployed ('000) | 5.1 | 5.0 | 5.6 | 0.5 | 9.0 | 9.5 | 9.2 | 0.2 |
| Unemployment Rate (%) | 8.0 | 8.0 | 9.0 | 1.0 | 15.7 | 14.5 | 14.6 | (1.1) |
| Participation Rate (%) | 64.2 | 62.9 | 62.5 | (1.7) | 48.6 | 55.8 | 53.7 | 5.1 |
| Employment Rate (%) | 58.9 | 57.8 | 56.9 | (2.0) | 41.0 | 47.7 | 45.9 | 4.9 |

| | 1250 - Halifax County | | | | Halifax Metro (CMA) | | | |
|------------------------|------------------------------|----------|----------|---------------|----------------------------|----------|----------|---------------|
| | Jan 2005 | Dec 2005 | Jan 2006 | Annual Change | Jan 2005 | Dec 2005 | Jan 2006 | Annual Change |
| Population ('000) | 307.1 | 310.1 | 310.3 | 3.2 | 307.1 | 310.1 | 310.3 | 3.2 |
| Labour Force ('000) | 215.8 | 211.8 | 210.4 | (5.4) | 215.8 | 211.8 | 210.4 | (5.4) |
| Employment ('000) | 202.3 | 200.7 | 199.1 | (3.2) | 202.3 | 200.7 | 199.1 | (3.2) |
| Unemployed ('000) | 13.6 | 11.0 | 11.4 | (2.2) | 13.6 | 11.0 | 11.4 | (2.2) |
| Unemployment Rate (%) | 6.3 | 5.2 | 5.4 | (0.9) | 6.3 | 5.2 | 5.4 | (0.9) |
| Participation Rate (%) | 70.3 | 68.3 | 67.8 | (2.5) | 70.3 | 68.3 | 67.8 | (2.5) |
| Employment Rate (%) | 65.9 | 64.7 | 64.2 | (1.7) | 65.9 | 64.7 | 64.2 | (1.7) |

| | 1220 - North Shore | | | | 1240 - Southern | | | |
|------------------------|---------------------------|----------|----------|---------------|------------------------|----------|----------|---------------|
| | Jan 2005 | Dec 2005 | Jan 2006 | Annual Change | Jan 2005 | Dec 2005 | Jan 2006 | Annual Change |
| Population ('000) | 131.1 | 131.2 | 131.2 | 0.1 | 103.7 | 103.8 | 103.8 | 0.1 |
| Labour Force ('000) | 80.1 | 80.9 | 80.4 | 0.3 | 63.6 | 60.1 | 58.9 | (4.7) |
| Employment ('000) | 71.4 | 75.1 | 73.6 | 2.2 | 57.1 | 53.4 | 52.2 | (4.9) |
| Unemployed ('000) | 8.7 | 5.8 | 6.8 | (1.9) | 6.5 | 6.7 | 6.8 | 0.3 |
| Unemployment Rate (%) | 10.9 | 7.2 | 8.5 | (2.4) | 10.2 | 11.1 | 11.5 | 1.3 |
| Participation Rate (%) | 61.1 | 61.7 | 61.3 | 0.2 | 61.3 | 57.9 | 56.7 | (4.6) |
| Employment Rate (%) | 54.5 | 57.2 | 56.1 | 1.6 | 55.1 | 51.4 | 50.3 | (4.8) |

Employment Situation - January 2006
Job Tenure

Employment - Seasonally Adjusted (000's)

| | Total | | | | Full-Time | | | | Part-time | | | |
|----------------------------------|----------|----------|----------|---------------|-----------|----------|----------|---------------|-----------|----------|----------|---------------|
| | Jan 2005 | Dec 2005 | Jan 2006 | Annual Change | Jan 2005 | Dec 2005 | Jan 2006 | Annual Change | Jan 2005 | Dec 2005 | Jan 2006 | Annual Change |
| Canada | 16,051.7 | 16,294.7 | 16,321.0 | 269.3 | 13,086.9 | 13,358.3 | 13,374.4 | 287.5 | 2,964.7 | 2,936.4 | 2,946.6 | (18.1) |
| Newfoundland and Labrador | 215.5 | 210.9 | 209.3 | (6.2) | 182.7 | 176.1 | 175.9 | (6.8) | 32.8 | 34.8 | 33.4 | 0.6 |
| Prince Edward Island | 68.7 | 68.6 | 68.7 | - | 57.1 | 58.2 | 57.9 | 0.8 | 11.5 | 10.4 | 10.8 | (0.7) |
| Nova Scotia | 444.9 | 441.3 | 442.8 | (2.1) | 362.7 | 360.9 | 363.0 | 0.3 | 82.3 | 80.4 | 79.8 | (2.5) |
| New Brunswick | 349.9 | 355.3 | 358.7 | 8.8 | 296.2 | 294.6 | 296.3 | 0.1 | 53.7 | 60.8 | 62.4 | 8.7 |
| Quebec | 3,705.2 | 3,755.0 | 3,746.3 | 41.1 | 3,048.2 | 3,074.1 | 3,073.9 | 25.7 | 657.0 | 680.9 | 672.4 | 15.4 |
| Ontario | 6,327.1 | 6,433.4 | 6,449.0 | 121.9 | 5,133.4 | 5,312.6 | 5,303.6 | 170.2 | 1,193.7 | 1,120.8 | 1,145.4 | (48.3) |
| Manitoba | 579.7 | 583.6 | 586.3 | 6.6 | 470.6 | 463.9 | 465.9 | (4.7) | 109.1 | 119.7 | 120.4 | 11.3 |
| Saskatchewan | 486.5 | 479.7 | 482.9 | (3.6) | 389.4 | 389.3 | 389.3 | (0.1) | 97.1 | 90.4 | 93.5 | (3.6) |
| Alberta | 1,771.8 | 1,799.8 | 1,810.2 | 38.4 | 1,458.5 | 1,498.6 | 1,511.9 | 53.4 | 313.4 | 301.3 | 298.3 | (15.1) |
| British Columbia | 2,102.4 | 2,167.1 | 2,166.9 | 64.5 | 1,687.7 | 1,729.6 | 1,736.5 | 48.8 | 414.7 | 437.5 | 430.4 | 15.7 |

Employment - Actual (000's)

| | Total | | | | Full-Time | | | | Part-time | | | |
|----------------------------------|----------|----------|----------|---------------|-----------|----------|----------|---------------|-----------|----------|----------|---------------|
| | Jan 2005 | Dec 2005 | Jan 2006 | Annual Change | Jan 2005 | Dec 2005 | Jan 2006 | Annual Change | Jan 2005 | Dec 2005 | Jan 2006 | Annual Change |
| Canada | 15,678.1 | 16,228.1 | 15,949.1 | 271.0 | 12,593.6 | 13,144.0 | 12,882.9 | 289.3 | 3,084.6 | 3,084.1 | 3,066.2 | (18.4) |
| Newfoundland and Labrador | 199.3 | 203.5 | 193.9 | (5.4) | 165.7 | 169.0 | 159.7 | (6.0) | 33.7 | 34.5 | 34.2 | 0.5 |
| Prince Edward Island | 62.8 | 65.9 | 63.0 | 0.2 | 50.9 | 54.8 | 51.8 | 0.9 | 12.0 | 11.1 | 11.2 | (0.8) |
| Nova Scotia | 426.8 | 439.8 | 425.0 | (1.8) | 340.0 | 353.6 | 339.1 | (0.9) | 86.8 | 86.3 | 85.9 | (0.9) |
| New Brunswick | 332.9 | 349.9 | 342.9 | 10.0 | 276.5 | 286.1 | 276.9 | 0.4 | 56.3 | 63.8 | 66.0 | 9.7 |
| Quebec | 3,599.5 | 3,718.2 | 3,639.1 | 39.6 | 2,911.4 | 2,995.8 | 2,942.8 | 31.4 | 688.1 | 722.5 | 696.3 | 8.2 |
| Ontario | 6,217.0 | 6,427.1 | 6,337.6 | 120.6 | 4,981.3 | 5,250.7 | 5,143.3 | 162.0 | 1,235.7 | 1,176.4 | 1,194.3 | (41.4) |
| Manitoba | 567.9 | 581.9 | 574.1 | 6.2 | 453.7 | 455.3 | 448.3 | (5.4) | 114.3 | 126.6 | 125.8 | 11.5 |
| Saskatchewan | 473.4 | 474.5 | 470.8 | (2.6) | 374.1 | 380.5 | 374.8 | 0.7 | 99.4 | 93.9 | 96.0 | (3.4) |
| Alberta | 1,740.5 | 1,798.6 | 1,780.2 | 39.7 | 1,409.0 | 1,485.6 | 1,464.8 | 55.8 | 331.5 | 313.0 | 315.4 | (16.1) |
| British Columbia | 2,058.0 | 2,168.6 | 2,122.5 | 64.5 | 1,631.0 | 1,712.7 | 1,681.5 | 50.5 | 427.0 | 455.9 | 441.0 | 14.0 |

**Employment Situation - January 2006
Youth Statistics**

15-24 Age Group - Seasonally Adjusted

| | Labour Force - 000's | | | | Employment - 000's | | | | Unemployment - % | | | |
|----------------------------------|----------------------|----------|----------|---------------|--------------------|----------|----------|---------------|------------------|----------|----------|---------------|
| | Jan 2005 | Dec 2005 | Jan 2006 | Annual Change | Jan 2005 | Dec 2005 | Jan 2006 | Annual Change | Jan 2005 | Dec 2005 | Jan 2006 | Annual Change |
| Canada | 2,821.3 | 2,850.6 | 2,867.3 | 46.0 | 2,461.2 | 2,512.5 | 2,512.3 | 51.1 | 12.8 | 11.9 | 12.4 | (0.4) |
| Newfoundland and Labrador | 38.6 | 36.6 | 35.6 | (3.0) | 31.0 | 28.6 | 25.4 | (5.6) | 19.7 | 21.9 | 28.4 | 8.7 |
| Prince Edward Island | 13.3 | 13.4 | 13.5 | 0.2 | 11.1 | 11.4 | 11.5 | 0.4 | 16.5 | 15.7 | 14.1 | (2.4) |
| Nova Scotia | 82.9 | 81.4 | 82.6 | (0.3) | 67.9 | 70.7 | 72.5 | 4.6 | 18.1 | 13.3 | 12.2 | (5.9) |
| New Brunswick | 61.9 | 63.3 | 65.2 | 3.3 | 53.4 | 54.3 | 56.2 | 2.8 | 13.7 | 14.2 | 13.8 | 0.1 |
| Quebec | 640.9 | 635.3 | 638.3 | (2.6) | 557.2 | 550.9 | 547.3 | (9.9) | 13.1 | 13.3 | 14.3 | 1.2 |
| Ontario | 1,083.1 | 1,097.5 | 1,108.6 | 25.5 | 929.6 | 950.4 | 948.4 | 18.8 | 14.2 | 13.4 | 14.5 | 0.3 |
| Manitoba | 109.7 | 109.5 | 113.9 | 4.2 | 97.2 | 100.4 | 104.8 | 7.6 | 11.4 | 8.3 | 8.0 | (3.4) |
| Saskatchewan | 94.9 | 94.6 | 94.7 | (0.2) | 87.8 | 83.2 | 84.0 | (3.8) | 7.5 | 12.1 | 11.3 | 3.8 |
| Alberta | 340.7 | 340.6 | 340.8 | 0.1 | 313.6 | 314.7 | 316.4 | 2.8 | 8.0 | 7.6 | 7.2 | (0.8) |
| British Columbia | 355.2 | 378.4 | 374.3 | 19.1 | 312.4 | 347.9 | 345.8 | 33.4 | 12.0 | 8.1 | 7.6 | (4.4) |

15-24 Age Group - Actual

| | Labour Force - 000's | | | | Employment - 000's | | | | Unemployment - % | | | |
|----------------------------------|----------------------|----------|----------|---------------|--------------------|----------|----------|---------------|------------------|----------|----------|---------------|
| | Jan 2005 | Dec 2005 | Jan 2006 | Annual Change | Jan 2005 | Dec 2005 | Jan 2006 | Annual Change | Jan 2005 | Dec 2005 | Jan 2006 | Annual Change |
| Canada | 2,637.5 | 2,731.6 | 2,681.2 | 43.7 | 2,282.7 | 2,449.4 | 2,331.1 | 48.4 | 13.5 | 10.3 | 13.1 | (0.4) |
| Newfoundland and Labrador | 33.8 | 33.2 | 31.3 | (2.5) | 26.6 | 26.7 | 21.6 | (5.0) | 21.3 | 19.6 | 30.7 | 9.4 |
| Prince Edward Island | 12.0 | 12.2 | 12.0 | - | 9.1 | 10.3 | 9.6 | 0.5 | 23.3 | 16.4 | 19.2 | (4.1) |
| Nova Scotia | 76.0 | 78.0 | 75.7 | (0.3) | 60.5 | 68.6 | 65.4 | 4.9 | 20.4 | 11.9 | 13.6 | (6.8) |
| New Brunswick | 55.1 | 59.4 | 58.6 | 3.5 | 46.8 | 51.8 | 50.1 | 3.3 | 15.2 | 12.8 | 14.5 | (0.7) |
| Quebec | 602.9 | 602.0 | 601.0 | (1.9) | 515.2 | 527.2 | 504.7 | (10.5) | 14.5 | 12.4 | 16.0 | 1.5 |
| Ontario | 1,006.1 | 1,047.3 | 1,029.9 | 23.8 | 868.7 | 930.5 | 885.2 | 16.5 | 13.7 | 11.1 | 14.1 | 0.4 |
| Manitoba | 103.4 | 107.5 | 107.5 | 4.1 | 90.0 | 98.5 | 97.8 | 7.8 | 12.9 | 8.5 | 8.9 | (4.0) |
| Saskatchewan | 87.5 | 88.6 | 87.3 | (0.2) | 79.9 | 79.2 | 76.5 | (3.4) | 8.8 | 10.6 | 12.5 | 3.7 |
| Alberta | 321.9 | 333.2 | 322.8 | 0.9 | 292.2 | 309.0 | 294.3 | 2.1 | 9.2 | 7.3 | 8.8 | (0.4) |
| British Columbia | 338.9 | 370.2 | 355.2 | 16.3 | 293.8 | 347.6 | 325.8 | 32.0 | 13.3 | 6.1 | 8.3 | (5.0) |

Employment Situation - January 2006

CMA Data

(Unadjusted - three month moving average)

| | Unemployment Rate - % | | | | Employment Rate - % | | | | Participation Rate - % | | | |
|---------------------------------------|-----------------------|------------|------------|---------------|---------------------|-------------|-------------|---------------|------------------------|-------------|-------------|---------------|
| | Jan 2005 | Dec 2005 | Jan 2006 | Annual Change | Jan 2005 | Dec 2005 | Jan 2006 | Annual Change | Jan 2005 | Dec 2005 | Jan 2006 | Annual Change |
| St. John's, Newfoundland and Labrador | 8.2 | 7.6 | 8.3 | 0.1 | 60.6 | 59.4 | 59.0 | (1.6) | 66.0 | 64.3 | 64.3 | (1.7) |
| Halifax | 6.3 | 5.2 | 5.4 | (0.9) | 65.9 | 64.7 | 64.2 | (1.7) | 70.3 | 68.3 | 67.8 | (2.5) |
| Saint John, New Brunswick | 6.6 | 5.5 | 4.9 | (1.7) | 60.1 | 59.8 | 61.6 | 1.5 | 64.4 | 63.2 | 64.8 | 0.4 |
| Saguenay | 10.9 | 10.1 | 9.2 | (1.7) | 54.2 | 54.3 | 55.0 | 0.8 | 60.9 | 60.4 | 60.6 | (0.3) |
| Québec | 6.5 | 4.0 | 4.9 | (1.6) | 61.5 | 62.8 | 62.4 | 0.9 | 65.8 | 65.4 | 65.6 | (0.2) |
| Trois-Rivières | 10.2 | 8.8 | 8.5 | (1.7) | 55.7 | 57.7 | 57.9 | 2.2 | 62.0 | 63.3 | 63.3 | 1.3 |
| Sherbrooke | 7.4 | 6.8 | 7.7 | 0.3 | 61.6 | 60.0 | 59.8 | (1.8) | 66.4 | 64.4 | 64.8 | (1.6) |
| Montreal | 9.0 | 9.1 | 9.7 | 0.7 | 61.1 | 61.2 | 60.6 | (0.5) | 67.1 | 67.4 | 67.1 | - |
| Ottawa-Gatineau | 6.2 | 5.1 | 5.1 | (1.1) | 66.9 | 67.8 | 68.3 | 1.4 | 71.3 | 71.5 | 72.0 | 0.7 |
| Greater Sudbury / Grand Sudbury | 7.9 | 7.3 | 7.5 | (0.4) | 61.2 | 57.0 | 57.1 | (4.1) | 66.3 | 61.5 | 61.8 | (4.5) |
| Oshawa | 6.0 | 6.1 | 6.7 | 0.7 | 66.1 | 65.1 | 64.8 | (1.3) | 70.3 | 69.3 | 69.5 | (0.8) |
| Toronto | 7.0 | 5.7 | 5.9 | (1.1) | 63.7 | 65.0 | 64.1 | 0.4 | 68.5 | 68.9 | 68.1 | (0.4) |
| Hamilton | 5.5 | 5.3 | 5.4 | (0.1) | 63.3 | 64.2 | 64.4 | 1.1 | 67.0 | 67.7 | 68.1 | 1.1 |
| St. Catharines - Niagara | 6.7 | 6.5 | 7.4 | 0.7 | 60.1 | 57.8 | 56.5 | (3.6) | 64.4 | 61.8 | 61.0 | (3.4) |
| London | 6.1 | 6.4 | 6.1 | - | 65.0 | 63.5 | 63.4 | (1.6) | 69.3 | 67.8 | 67.5 | (1.8) |
| Windsor | 9.9 | 6.4 | 8.4 | (1.5) | 60.2 | 61.3 | 60.8 | 0.6 | 66.9 | 65.5 | 66.4 | (0.5) |
| Kitchener | 3.7 | 5.0 | 5.1 | 1.4 | 67.4 | 68.0 | 68.2 | 0.8 | 70.0 | 71.6 | 71.9 | 1.9 |
| Thunder Bay | 8.1 | 5.6 | 6.3 | (1.8) | 61.4 | 59.7 | 58.5 | (2.9) | 66.8 | 63.2 | 62.6 | (4.2) |
| Winnipeg | 4.9 | 3.9 | 4.0 | (0.9) | 66.7 | 66.0 | 66.1 | (0.6) | 70.1 | 68.7 | 68.8 | (1.3) |
| Regina | 5.1 | 4.7 | 5.0 | (0.1) | 68.4 | 66.4 | 65.8 | (2.6) | 72.1 | 69.7 | 69.3 | (2.8) |
| Saskatoon | 5.0 | 5.1 | 5.4 | 0.4 | 67.0 | 65.3 | 64.7 | (2.3) | 70.5 | 68.9 | 68.4 | (2.1) |
| Calgary | 4.8 | 4.5 | 4.6 | (0.2) | 70.1 | 70.6 | 71.0 | 0.9 | 73.6 | 73.9 | 74.4 | 0.8 |
| Edmonton | 5.1 | 4.1 | 4.3 | (0.8) | 68.4 | 66.2 | 65.1 | (3.3) | 72.0 | 69.0 | 68.0 | (4.0) |
| Vancouver | 6.0 | 4.1 | 4.5 | (1.5) | 63.0 | 63.5 | 63.1 | 0.1 | 67.0 | 66.3 | 66.0 | (1.0) |
| Victoria | 5.1 | 4.0 | 4.0 | (1.1) | 59.8 | 61.6 | 60.7 | 0.9 | 63.0 | 64.2 | 63.2 | 0.2 |