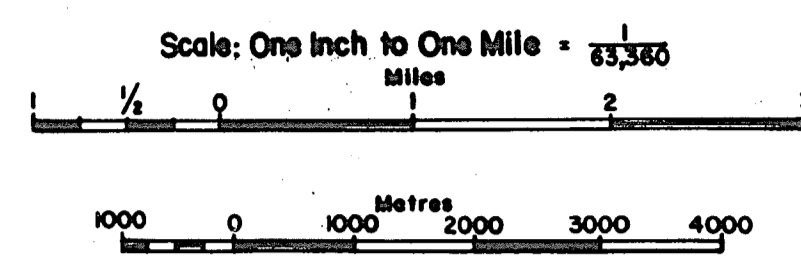


WATER RESOURCES  
 SYDNEY COALFIELD, NOVA SCOTIA  
 MAP 1  
 BEDROCK GEOLOGY

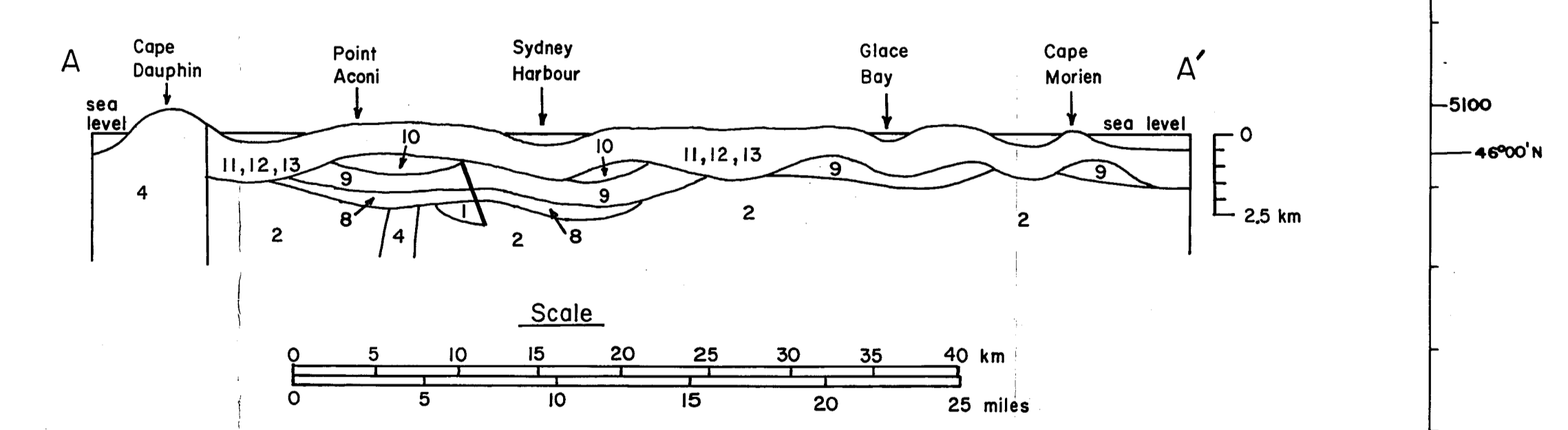


LEGEND

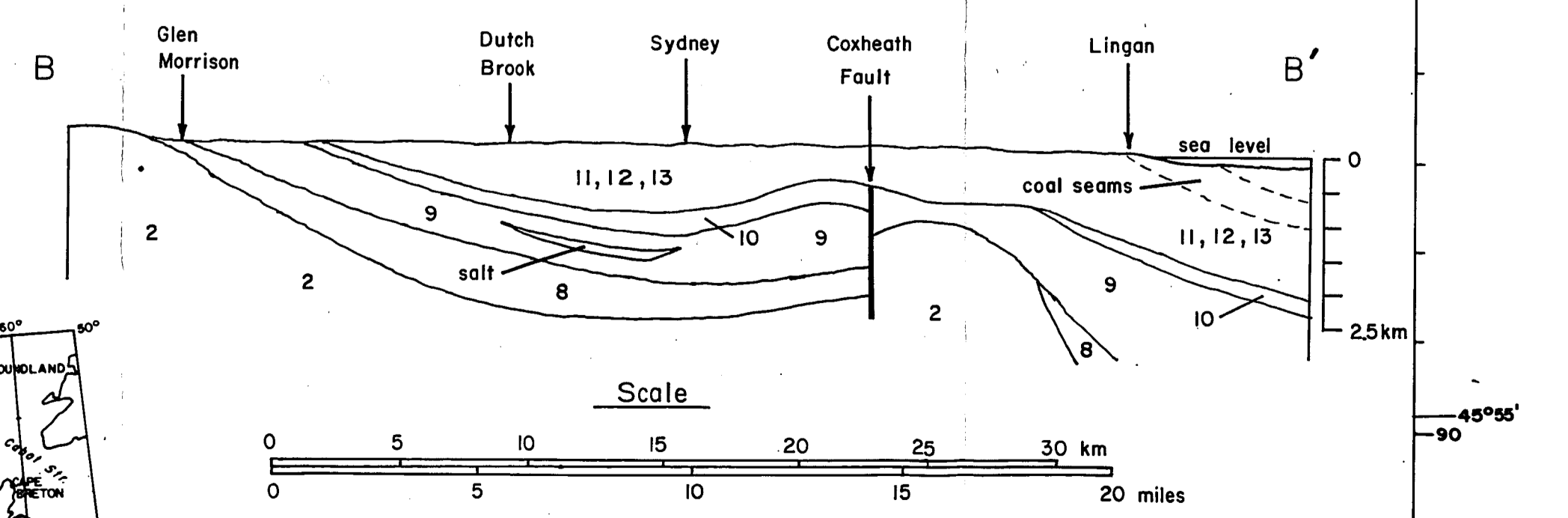
- CARBONIFEROUS**
- PENNSYLVANIAN**
- 13 MORIEN GROUP: Ptychocarpus unitus zone: grey sandstone and shale, thin beds of freshwater limestone, intercalated red beds, workable coal seams
  - 12 MORIEN GROUP: Linopteris obliqua zone: grey arkosic grit and sandstone, some shale and conglomerate, a few red beds, a few workable coal seams
  - 11 MORIEN GROUP: Lonchopteris zone: grey conglomerate, arkosic grit and shale, a few red beds, thin coal seams
  - 10 CANSO GROUP: 10b CAPE DAUPHIN FORMATION: grey shale; 10a POINT EDWARD FORMATION: red and grey conglomerate, sandstone and shale, thin beds of freshwater limestone
- MISSISSIPPIAN**
- 9 WINDSOR GROUP: Limestone, anhydrite, gypsum, shale, sandstone, conglomerate
  - 8 WINDSOR GROUP: GRANTMIRE FORMATION: conglomerate, sandstone, shale
- DEVONIAN**
- 7 7a Andesite, basalt, gabbro; 7a granitic rocks
  - 6 McADAM LAKE FORMATION: conglomerate, arkose, shale, tuff
- ORDOVICIAN**
- 5 Conglomerate, grit, sandstone, shale
- CAMBRIAN**
- 4 4c Granite; 4b granodiorite, quartz monzonite; 4a quartz diorite
  - 3 Pyroclastics, rhyolite, quartz latite, dacite, andesite
  - 2 FOURCHU GROUP: Volcanic breccia, tuff; lavas; sandstone, shale; chlorite schist
- PRECAMBRIAN**
- 1 GEORGE RIVER GROUP: 1b crystalline limestone or dolomite; 1a quartzite, schist, gneiss, amphibolite

- Geological boundary (defined, approximate, assumed)
- Bedding (inclined, horizontal)  
NOTE: All inclinations are in degrees.  
Rock outcrop (altitude not determined)
- Coal seam, limestone bed (defined, approximate, assumed)
- Anticlinal axis (approximate)
- Synclinal axis (approximate)
- Fault (defined, approximate, assumed)
- Mineral occurrence
- Bedrockwater well location
- Bedrock test well location
- Study area boundary

CROSS SECTION A-A'



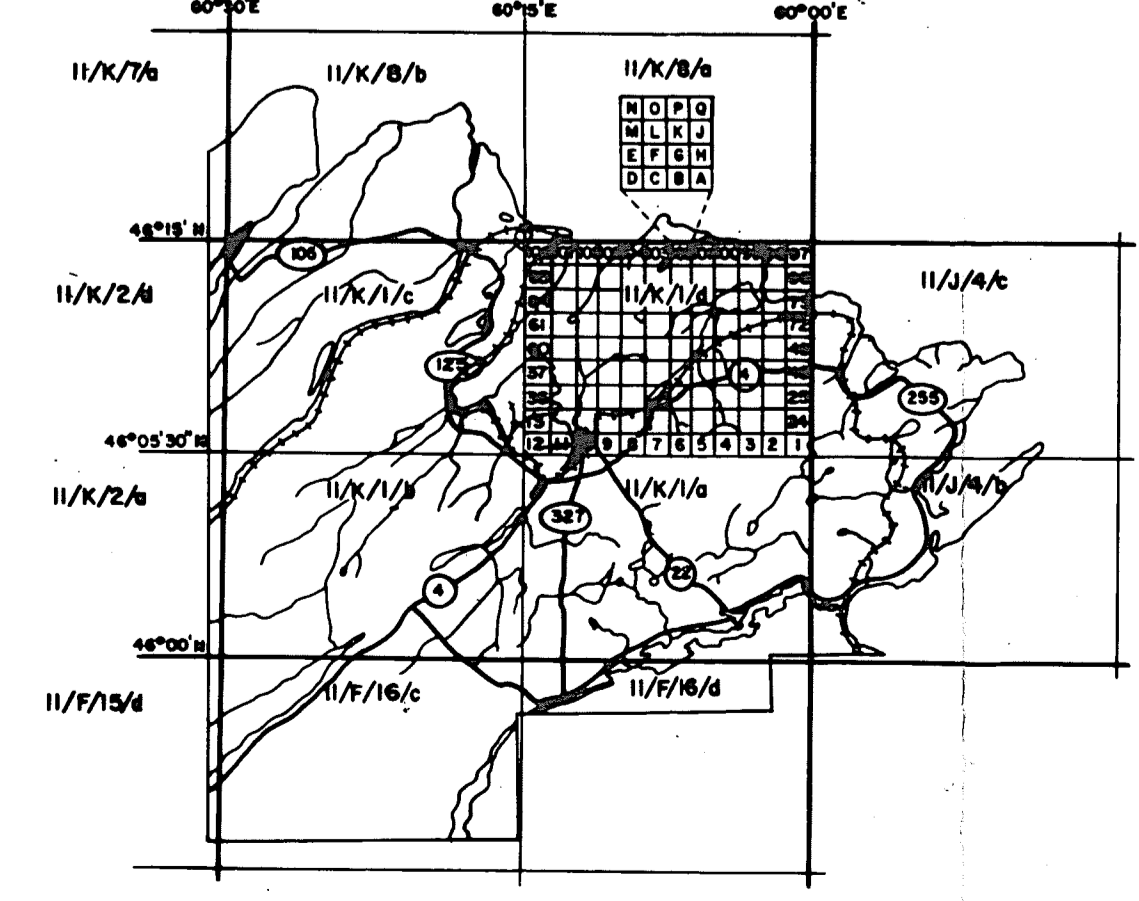
CROSS SECTION B-B'



(Source of Cross Section B-B': "Sydney Basin Project Update" by R.C. Boehner, 1984)

Map for inclusion with Nova Scotia Department of the Environment Report  
 "Water Resources, Sydney Coalfield, Nova Scotia" by F. Boechler (1986).

INDEX TO MINING TRACT GRID



ONE THOUSAND METRE  
 UNIVERSAL TRANSVERSE MERCATOR GRID  
 ZONE 21

EXAMPLE OF METHOD USED TO GIVE A REFERENCE TO NEAREST 100 METRES

THIS GRID REFERENCE IS LOCATED AT THE INTERSECTION OF THE 11 AND THE 7a CLASSES. THE NEAREST 100 METRES IS 11,12,13.

NOTE: Read number on grid the same way as you would read a number on a map. The number on the left is the easting and the number on the top is the northing.

LOCATIONS REFERRED TO IN TEXT ARE REPORTED IN THE U.T.M. GRID SYSTEM AND ARE GIVEN IN 100 METRE UNITS.

