



Map No. 1

HYDROGEOLOGY OF THE TRURO AREA

NOVA SCOTIA

DEPARTMENT OF MINES, NOVA SCOTIA

1972



LEGEND

QUATERNARY RECENT

- Salt marsh and tidal flat
- Dykeland
- Stream alluvium
- Peat and muck

PLEISTOCENE

- Ice-contact stratified drift
- Kame
- Kame terrace
- Kame field
- Esker
- Outwash sand and gravel
- Lacustrine silt and clay
- Sandy Hill
- Hummocky moraine
- Clay Hill

MESOZOIC

TRIASSIC

- 7 FUNDY GROUP: Wolfville Formation red sandstone and conglomerate

CARBONIFEROUS

PENNSYLVANIAN

- 6 CUMBERLAND AND/OR PICTOU GROUP: Brown, green, and grey conglomerate, sandstone, shale
- 5 RIVERSDALE GROUP: Mainly grey, fiste, shale; shaly sandstone

MISSISSIPPIAN

CANSO GROUP

- 4 Red and grey sandstone, shale

WINDSOR GROUP

- 3 Grey limestone; red and green shale; gypsum and anhydrite

HORTON GROUP

- 2 Red and grey sandstone, grit, shale

PRE-CARBONIFEROUS (?)

- 1 Cobequid Complex: Igneous, metamorphic and sedimentary rocks

SYMBOLS

- Watershed boundary
- Bedrock contact
- Fault (approximate, assumed)
- Strike and dip of bedding
- Surficial deposit boundary
- Test hole location and number (Water sample index No.)
- Sample location, drilled well, dug well, spring
- Sample location of surface water (No. of samples)
- Drill hole (Dept. of Highways)
- Roads (trail)
- Stream
- Lake
- Marsh or swamp
- Building
- Railways
- Contour interval 25 feet
- Sink hole or sink-hole topography
- Bedrock geology compiled from maps by I. M. Stevenson, 1950, 1951, (11E6), D. G. Benson, 1960, 1961 (11E7) and L. V. Brandon, 1963.
- Surficial geology mapped by T. W. Hennigar, 1966, 1967, with reference to soil maps of Colchester County (R. E. Wicklund and G. R. Smith 1948).

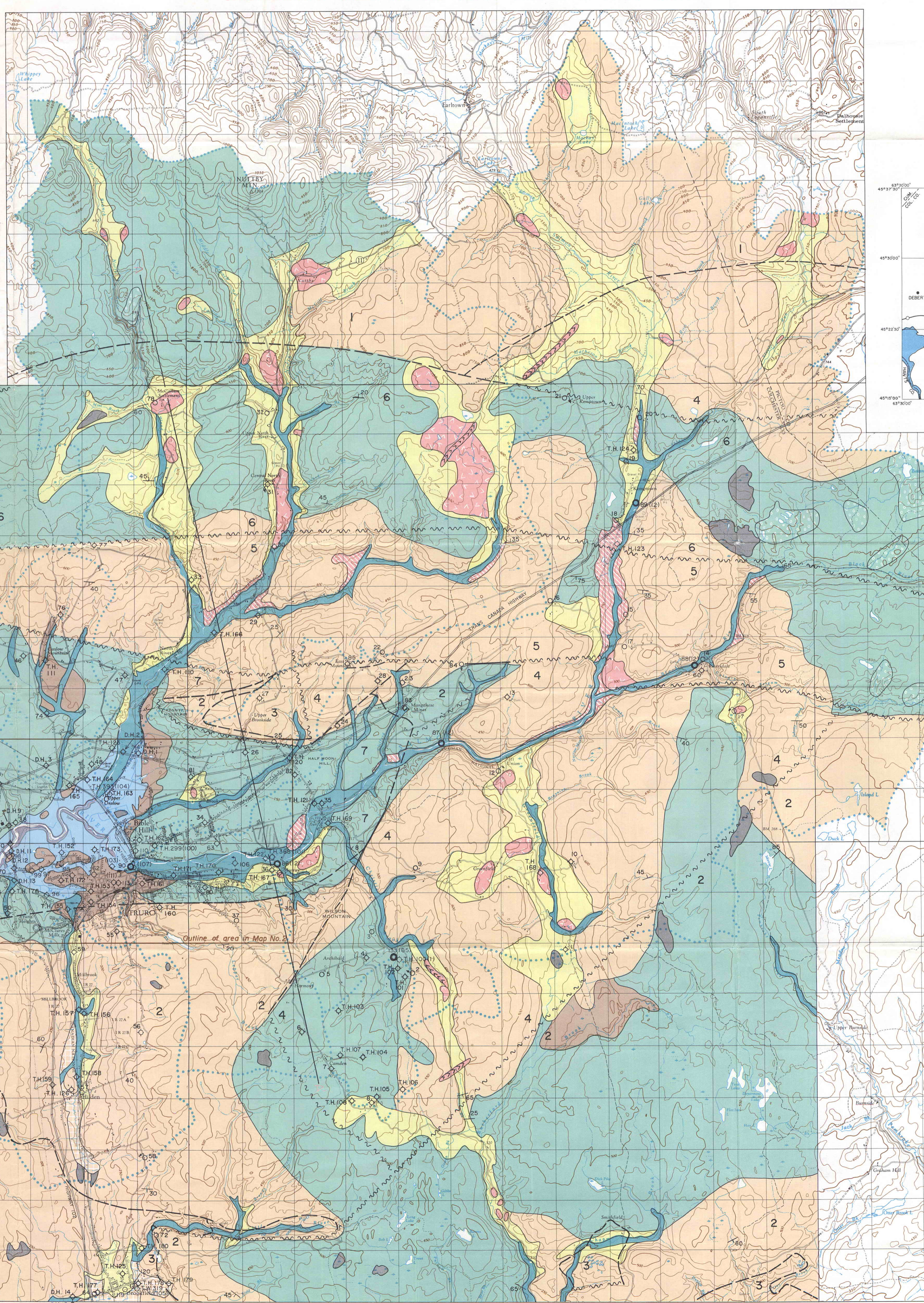
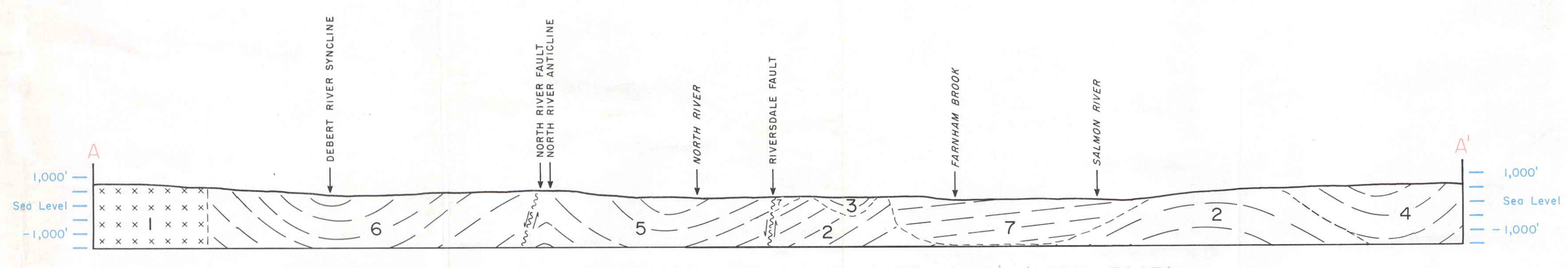


TABLE OF WELL AND SPRING DATA*

Index No.	Depth (feet)	Water level (feet)	Yield (gpm)**	Index No.	Depth (feet)	Water level (feet)	Yield (gpm)**
1	40	10.6	7**	44	17	8	8
2	65	15	spring	45	15	spring	15
3	67	100	spring	46	100	spring	100
4	68	100	spring	47	100	spring	100
5	69	100	spring	48	100	spring	100
6	70	100	spring	49	100	spring	100
7	71	100	spring	50	100	spring	100
8	72	100	spring	51	100	spring	100
9	73	100	spring	52	100	spring	100
10	74	100	spring	53	100	spring	100
11	75	100	spring	54	100	spring	100
12	76	100	spring	55	100	spring	100
13	77	100	spring	56	100	spring	100
14	78	100	spring	57	100	spring	100
15	79	100	spring	58	100	spring	100
16	80	100	spring	59	100	spring	100
17	81	100	spring	60	100	spring	100
18	82	100	spring	61	100	spring	100
19	83	100	spring	62	100	spring	100
20	84	100	spring	63	100	spring	100
21	85	100	spring	64	100	spring	100
22	86	100	spring	65	100	spring	100
23	87	100	spring	66	100	spring	100
24	88	100	spring	67	100	spring	100
25	89	100	spring	68	100	spring	100
26	90	100	spring	69	100	spring	100
27	91	100	spring	70	100	spring	100
28	92	100	spring	71	100	spring	100
29	93	100	spring	72	100	spring	100
30	94	100	spring	73	100	spring	100
31	95	100	spring	74	100	spring	100
32	96	100	spring	75	100	spring	100
33	97	100	spring	76	100	spring	100
34	98	100	spring	77	100	spring	100
35	99	100	spring	78	100	spring	100
36	100	100	spring	79	100	spring	100
37	101	100	spring	80	100	spring	100
38	102	100	spring	81	100	spring	100
39	103	100	spring	82	100	spring	100
40	104	100	spring	83	100	spring	100
41	105	100	spring	84	100	spring	100
42	106	100	spring	85	100	spring	100
43	107	100	spring	86	100	spring	100
44	108	100	spring	87	100	spring	100
45	109	100	spring	88	100	spring	100
46	110	100	spring	89	100	spring	100
47	111	100	spring	90	100	spring	100
48	112	100	spring	91	100	spring	100
49	113	100	spring	92	100	spring	100
50	114	100	spring	93	100	spring	100
51	115	100	spring	94	100	spring	100
52	116	100	spring	95	100	spring	100
53	117	100	spring	96	100	spring	100
54	118	100	spring	97	100	spring	100
55	119	100	spring	98	100	spring	100
56	120	100	spring	99	100	spring	100
57	121	100	spring	100	100	spring	100
58	122	100	spring	101	100	spring	100
59	123	100	spring	102	100	spring	100
60	124	100	spring	103	100	spring	100
61	125	100	spring	104	100	spring	100
62	126	100	spring	105	100	spring	100
63	127	100	spring	106	100	spring	100
64	128	100	spring	107	100	spring	100
65	129	100	spring	108	100	spring	100
66	130	100	spring	109	100	spring	100
67	131	100	spring	110	100	spring	100
68	132	100	spring	111	100	spring	100
69	133	100	spring	112	100	spring	100
70	134	100	spring	113	100	spring	100
71	135	100	spring	114	100	spring	100
72	136	100	spring	115	100	spring	100
73	137	100	spring	116	100	spring	100
74	138	100	spring	117	100	spring	100
75	139	100	spring	118	100	spring	100
76	140	100	spring	119	100	spring	100
77	141	100	spring	120	100	spring	100
78	142	100	spring	121	100	spring	100
79	143	100	spring	122	100	spring	100
80	144	100	spring	123	100	spring	100
81	145	100	spring	124	100	spring	100
82	146	100	spring	125	100	spring	100
83	147	100	spring	126	100	spring	100
84	148	100	spring	127	100	spring	100
85	149	100	spring	128	100	spring	100
86	150	100	spring	129	100	spring	100
87	151	100	spring	130	100	spring	100
88	152	100	spring	131	100	spring	100
89	153	100	spring	132	100	spring	100
90	154	100	spring	133	100	spring	100
91	155	100	spring	134	100	spring	100
92	156	100	spring	135	100	spring	100
93	157	100	spring	136	100	spring	100
94	158	100	spring	137	100	spring	100
95	159	100	spring	138	100	spring	100
96	160	100	spring	139	100	spring	100
97	161	100	spring	140	100	spring	100
98	162	100	spring	141	100	spring	100
99	163	100	spring	142	100	spring	100
100	164	100	spring	143	100	spring	100
101	165	100	spring	144	100	spring	100
102	166	100	spring	145	100	spring	100
103	167	100	spring	146	100	spring	100
104	168	100	spring	147	100	spring	100
105	169	100	spring	148	100	spring	100
106	170	100	spring	149	100	spring	100
107	171	100	spring	150	100	spring	100
108	172	100	spring	151	100	spring	100
109	173	100	spring	152	100	spring	100
110	174	100	spring	153	100	spring	100
111	175	100	spring	154	100	spring	100
112	176	100	spring	155	100	spring	100
113	177	100	spring	156	100	spring	100
114	178	100	spring	157	100	spring	100
115	179	100	spring	158	100	spring	100
116	180	100	spring	159	100	spring	100
117	181	100	spring	160	100	spring	100
118	182	100	spring	161	100	spring	100
119	183	100	spring	162	100	spring	100
120	184	100	spring	163	100	spring	100
121	185	100	spring	164	100	spring	100
122	186	100	spring	165	100	spring	100
123	187	100	spring	166	100	spring	100
124	188	100	spring	167	100	spring	100
125	189	100	spring	168	100	spring	100
126	190	100	spring	169	100	spring	100
127	191	100	spring	170	100	spring	100
128	192	100	spring	171	100	spring	100
129	193	100	spring	172	100	spring	100
130	194	100	spring	173	100	spring	100
131	195	100	spring	174	100	spring	100
132	196	100	spring	175	100	spring	100
133	197	100	spring	176	100	spring	100
134	198	100	spring	177	100	spring	100
135	199	100	spring	178	100	spring	100
136	200	100	spring	179	100	spring	100
137	201	100	spring	180	100	spring	100
138	202	100	spring	181	100	spring	100
139	203	100	spring	182	100	spring	100
140	204	100	spring	183	100	spring	100
141	205	100	spring	184	100	spring	100
142	206	100	spring	185	100	spring	100
143	207	100	spring	186	100	spring	100
144	208	100	spring	187	100	spring	100
145	209	100	spring	188	100	spring	100
146	210	100	spring	189	100	spring	100
147	211	100	spring	190	100	spring	100
148	212	100	spring	191	100	spring	100
149	213	100	spring	192	100	spring	100
150	214	100	spring	193	100	spring	100
151	215	100	spring	194	100	spring	100
152	216	100	spring	195	100	spring	100
153	217	100	spring	196	100	spring	100
154	218	100	spring	197	100	spring	100
155	219	100	spring	198	100	spring	100
156	220	100	spring	199	100	spring	100
157	221	100	spring	200	100	spring	100
158	222	100	spring	201	100	spring	100
159	223	100	spring	202	100	spring	100
160	224	100	spring	203	100	spring	100
161	225	100	spring	204	100	spring	100
162	226	100	spring	205	100	spring	100
163	227	100	spring	206	100	spring	100
164	228	100	spring	207	100	spring	100
165	229	100	spring	208	100	spring	100
166	230	100	spring	209	100	spring	100
167	231	100	spring	210	100	spring	100
168	232	100	spring	211	100	spring</	