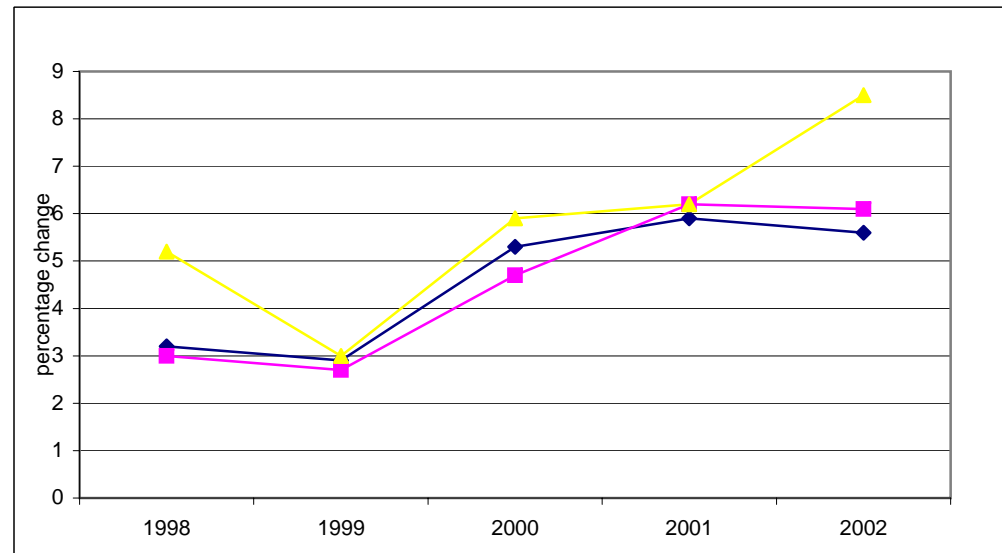


Nova Scotia/Canada Economic Indicators

April 2005

(compiled May 20, 2005)



Notes:

- (1) Statistics Canada estimate July 1
- (2) Annual average
- a Actual
- sa Seasonally adjusted
- p Preliminary
- pa Preliminary actual
- i Intention
- ri Revised intention

Data Sources:

Population, Vital Statistics, Migration - Statistics Canada, Demographic Estimates Section, Quarterly Demographic Statistics, Catalogue No. 91-002-XPB

Labour Force - Statistics Canada, Labour Statistics Division, Labour Force Survey, monthly Catalogue No. 71-001-XIE; Labour Force Historical Review, Catalogue No. 71F0004XCB

Employment Insurance - Statistics Canada, Labour Statistics Division, Employment Insurance Statistics, monthly

Consumer Price Index - Statistics Canada, Prices Division, The Consumer Price Index, Catalogue 62-001-XPB

Income (Personal Income per Capita, Total Wages & Salaries, Average Weekly Wages) - Statistics Canada, System of National Accounts, Provincial Economic Accounts, quarterly, Catalogue No. 13-213-PPB; Estimates of Labour Income, quarterly, Catalogue No. 13F0016-XPB; Employment, Earnings & Hours, monthly, Catalogue No. 72-002-XIB

Retail/Wholesale - Statistics Canada, Retail Trade, monthly, Catalogue No. 63-005-XPB; New Motor Vehicle Sales, monthly, Catalogue No. 63-007-XPB;

Wholesale Trade, monthly, Catalogue No. 63-008-XIB

Commodity Sector - Statistics Canada, Farm Cash Receipts, quarterly, Catalogue No. 21-001-XIB; Sawmills & Planing Mills, monthly, Catalogue No. 35-003-XIB;

Canada's Mineral Production, annual, Catalogue No. 26-202-XIB; Natural Gas Transportation and Distribution, monthly, Catalogue No. 55-002-XIB; Electric Power Statistics, monthly, Catalogue No. 57-001-XIB; Fisheries & Oceans Canada statistics, annual

monthly, Catalogue No. 57-001-XIB; Monthly Survey of Manufacturing Shipments, Catalogue No. 31-001-XPB; Canadian International Merchandise Trade, monthly, Catalogue No. 65-001-XPB

Construction - Statistics Canada, Private and Public Investment in Canada, semi-annual, Catalogue Nos. 61-205-XIB and 61-206-XIB; Building Permits, monthly, Catalogue No. 64-001-XIB;

Canada Mortgage and Housing statistics, monthly/quarterly

Gross Domestic Product - Statistics Canada, System of National Accounts, Provincial Economic Accounts, Catalogue No. 13-213-PPB

NOVA SCOTIA ECONOMIC INDICATORS

INDICATOR	Current Reference Period	MONTHLY/QUARTERLY/YEAR-TO-DATE STATISTICS					ANNUAL STATISTICS				
		% Change					Year-over-Year % Change				
		Reference Period									
		2 Years Ago	1 Year Ago	Current	1 Year Ago/ 2 Years Ago	Current/ 1 Year Ago	2002	2003	2004	2003/2002	2004/2003
POPULATION	Jan 1/2005	935,343	937,220	937,538	0.2	0.0	934,507 (1)	936,165 (1)	936,960 (1)	0.2	0.1
VITAL STATISTICS											
Births	Oct-Dec/2004	2,032	2,013	2,004	-0.9	-0.4	8,663	8,584	8,514	-0.9	-0.8
Deaths	Oct-Dec/2004	1,997	2,053	2,094	2.8	2.0	7,997	8,191	8,440	2.4	3.0
Marriages	Oct-Dec/2004	827	873	871	5.6	-0.2	4,899	4,878	4,862	-0.4	-0.3
MIGRATION											
Total Net Migration	Oct-Dec/2004	229	391	(85)	70.7	--	268	999	(119)	--	--
Net Interprovincial	Oct-Dec/2004	95	189	(263)	98.9	--	(256)	427	(954)	--	--
Net International	Oct-Dec/2004	134	202	178	--	-11.9	524	572	835	9.2	46.0
Immigration	Oct-Dec/2004	322	390	372	21.1	-4.6	1,422	1,476	1,762	3.8	19.4
Emigration	Oct-Dec/2004	188	188	197	0.0	4.8	898	904	927	0.7	2.5
LABOUR FORCE											
Seasonally Adjusted											
Total Labour Force ('000)	Apr/2005	474.0	482.5	485.7	1.8	0.7	467.2	474.7	484.3	1.6	2.0
Employed ('000)	Apr/2005	433.6	439.5	444.9	1.4	1.2	422.4	431.3	441.6	2.1	2.4
Goods Industries ('000)	Apr/2005	94.5	90.1	91.1	-4.7	1.1	89.9	92.2	93.0	2.6	0.9
Service Industries ('000)	Apr/2005	339.2	349.4	353.7	3.0	1.2	332.4	339.1	348.6	2.0	2.8
Unemployment ('000)	Apr/2005	40.3	43.0	40.9	6.7	-4.9	44.8	43.4	42.7	-3.1	-1.6
Unemployment Rate (%)	Apr/2005	8.5	8.9	8.4	--	--	9.6	9.1	8.8	--	--
Participation Rate (%)	Apr/2005	63.1	63.8	63.9	--	--	62.5	63.1	64.0	--	--
Actual											
Employed ('000)	Mar/2005	422.8	428.9	434.3	1.4	1.3	422.4	431.3	441.6	2.1	2.4
Unemployment Rate (%)	Mar/2005	9.4	9.9	9.2	--	--	9.6	9.1	8.8	--	--

NOVA SCOTIA ECONOMIC INDICATORS

INDICATOR	Current Reference Period	MONTHLY/QUARTERLY/YEAR-TO-DATE STATISTICS					ANNUAL STATISTICS				
		% Change					Year-over-Year % Change				
		Reference Period		Current			2002		2003		2004
		2 Years Ago	1 Year Ago	Current	1 Year Ago/ 2 Years Ago	Current/ 1 Year Ago	2002	2003	2004	2003/2002	2004/2003
EMPLOYMENT INSURANCE BENEFITS (EI)											
Total Beneficiaries (#)	Feb/2005	52,660	53,930	52,830	2.4	-2.0	40,689 (2)	40,698 (2)	40,894 (2)	0.0	0.5
Total Benefits Paid (\$'000)	Feb/2005	65,219	82,714	68,155	26.8	-17.6	661,365	680,374	678,533	2.9	-0.3
CONSUMER PRICE INDEX (1992=100)											
Nova Scotia											
All-Items	Apr/2005	123.9	125.1	128.9	1.0	3.0	119.8	123.9	126.1	3.4	1.8
Food	Apr/2005	122.4	123.3	129.1	0.7	4.7	119.9	122.5	125.3	2.2	2.3
Shelter	Apr/2005	122.9	124.2	129.4	1.1	4.2	117.2	122.3	125.4	4.4	2.5
INCOME											
Personal Income Per Capita (\$)	2004	25,447	26,269	27,092	3.2	3.1	25,447	26,269	27,092	3.2	3.1
Total Wages & Salaries (\$ millions)	Jan-Dec/2004	12,539.6	13,037.3	13,401.1	4.0	2.8	12,539.6	13,037.3	13,401.1	4.0	2.8
Average Weekly Wages & Salaries (\$)	Feb/2005	597.50	604.27	636.89	1.1	5.4	590.68	597.08	611.93	1.1	2.5
RETAIL/WHOLESALE TRADE											
All Retail Outlets (\$ millions) (sa)	Jan-Mar/2005	2,494.3	2,515.1	2,610.6	0.8	3.8	9,839.5	10,014.9	10,296.5	1.8	2.8
Dept. Store Sales (\$ millions) (a)	Jan-Mar/2005	117.4	133.4	144.0	13.6	7.9	658.5	710.2	744.2	7.9	4.8
New Motor Vehicle Sales (\$ millions) (a)	Jan-Mar/2005	257.3	256.4	254.7	(0.3)	(0.7)	1,288.8	1,313.1	1,282.2	1.9	-2.4
Wholesale Trade (\$millions) (sa)	Jan-Mar/2005	1,620.5	1,533.1	1,519.4	(5.4)	(0.9)	6,225.3	6,439.0	6,040.9	3.4	-6.2

NOVA SCOTIA ECONOMIC INDICATORS

INDICATOR	Current Reference Period	MONTHLY/QUARTERLY/YEAR-TO-DATE STATISTICS					ANNUAL STATISTICS						
		% Change					Year-over-Year % Change						
		2 Years Ago	1 Year Ago	Current	Reference Period		2002	2003	2004	2003/2002	2004/2003		
			1 Year Ago/	Current/									
COMMODITY SECTORS													
Farm Cash Receipts (\$ millions)	Jan-Dec/2004	404.7	417.9	452.3	3.3	8.2	404.7	417.9	452.3	3.3	8.2		
Fish Landings (\$ millions)	Jan-Dec/2003	784.6	739.4	801.3	p	-5.8	8.4	739.4	801.3	--	8.4	--	
Lumber Production (000m3)	Jan-Feb/2005	307.9	233.0	257.0	-24.3	10.3	1,871.6	1,680.3	1,784.5	-10.2	6.2		
Mineral Production ⁽¹⁾ (\$ millions)	2004	--	263.2	278.3	--	5.7	--	263.2	278.3	--	5.7		
Marketable Gas Receipts (million m3)	Jan-Dec/2004	5,209.4	4,469.5	4,174.1	-14.2	-6.6	5,209.4	4,469.5	4,174.1	-14.2	-6.6		
Power Generation (GW.h)	Jan-Feb/2005	2,300.8	2,393.8	2,313.8	4.0	-3.3	12,126.9	12,386.9	12,563.8	2.1	1.4		
Manufacturing Shipments (\$ millions)	Jan-Mar/2005	2,075.8	2,053.9	2,184.0	-1.1	6.3	8,296.4	8,523.6	9,160.5	2.7	7.5		
Foreign Exports (\$ millions)	Jan-Mar/2005	1,386.9	1,278.4	1,300.9	-7.8	1.8	5,226.0	5,349.3	5,479.0	2.4	2.4		
Foreign Imports (\$ millions)	Jan-Mar/2005	1,539.8	1,540.0	1,714.5	0.0	11.3	5,140.0	5,783.9	6,377.0	12.5	10.3		
CONSTRUCTION													
Capital Construction													
Expenditures (\$ millions)	2005	3,441.9	3,615.4	3,589.5	pa	5.0	-0.7	3,241.6	3,441.9	3,615.4	pa	6.2	5.0
Building Permits (\$ millions)	Jan-Mar/2005	154.2	156.4	156.2	p	1.4	-0.1	877.3	1,014.1	1,125.8	15.6	11.0	
Housing Starts Centres 10,000+													
Starts (units)	Jan-Mar/2005	584	459	292	-21.4	-36.4	3,721	3,589	3,313	-3.5	-7.7		
Completions (units)	Jan-Mar/2005	739	723	511	-2.2	-29.3	2,955	3,634	3,526	23.0	-3.0		
All Areas													
Starts (units)	Jan-Mar/2005	739	563	430	-23.8	-23.6	4,970	5,096	4,717	2.5	-7.4		
Completions (units)	Jan-Mar/2005	1,290	1,097	1,032	-15.0	-5.9	4,011	5,434	4,896	35.5	-9.9		
Under Construction (units)	Mar 31/2005	2,596	2,307	2,050	-11.1	-11.1	3,119	2,770	2,653	-11.2	-4.2		
GROSS DOMESTIC PRODUCT													
Real GDP (chained '97 \$ millions)	2004	24,874	25,180	25,500	1.2	1.3	24,874	25,180	25,500	1.2	1.3		

⁽¹⁾ Excludes oil and gas.

CANADA ECONOMIC INDICATORS

INDICATOR	Current Reference Period	MONTHLY/QUARTERLY/YEAR-TO-DATE STATISTICS					ANNUAL STATISTICS				
		% Change					Year-over-Year % Change				
		Reference Period									
		2 Years Ago	1 Year Ago	Current	1 Year Ago/ 2 Years Ago	Current/ 1 Year Ago	2002	2003	2004	2003/2002	2004/2003
POPULATION	Jan 1/2005	31,496,751	31,788,635	32,078,819	0.9	0.9	31,372,587 (1)	31,660,466 (1)	31,946,316 (1)	0.9	0.9
VITAL STATISTICS											
Births	Oct-Dec/2004	79,120	79,783	80,228	0.8	0.6	328,802	330,919	331,517	0.6	0.2
Deaths	Oct-Dec/2004	57,233	59,278	60,098	3.6	1.4	223,603	227,285	234,593	1.6	3.2
Marriages	Oct-Dec/2004	26,268	25,631	25,900	-2.4	1.0	146,738	145,048	146,377	-1.2	0.9
MIGRATION											
Total Net Migration	Oct-Dec/2004	31,920	43,678	37,686	36.8	-13.7	182,553	165,587	187,982	-9.3	13.5
Immigration	Oct-Dec/2004	41,843	53,610	48,099	28.1	-10.3	229,071	221,402	235,847	-3.3	6.5
Emigration	Oct-Dec/2004	9,923	9,932	10,413	0.1	4.8	46,518	46,739	47,865	0.5	2.4
LABOUR FORCE											
Seasonally Adjusted											
Total Labour Force ('000)	Apr/2005	16,888.7	17,139.5	17,290.1	1.5	0.9	16,580.1	16,954.0	17,183.4	2.3	1.4
Employed ('000)	Apr/2005	15,605.4	15,903.5	16,117.7	1.9	1.3	15,307.9	15,665.1	15,949.7	2.3	1.8
Goods Industries ('000)	Apr/2005	3,926.4	3,988.1	4,017.9	1.6	0.7	3,881.4	3,930.6	3,992.7	1.3	1.6
Service Industries ('000)	Apr/2005	11,679.0	11,915.5	12,099.8	2.0	1.5	11,426.5	11,734.4	11,957.0	2.7	1.9
Unemployment ('000)	Apr/2005	1,283.3	1,236.0	1,172.4	-3.7	-5.1	1,272.2	1,288.9	1,233.7	1.3	-4.3
Unemployment Rate (%)	Apr/2005	7.6	7.2	6.8	--	--	7.7	7.6	7.2	--	--
Participation Rate (%)	Apr/2005	67.4	67.6	67.2	--	--	66.9	67.5	67.6	--	--
Actual											
Employed ('000)	Apr/2005	15,390.1	15,684.4	15,898.9	1.9	1.4	15,307.9	15,665.1	15,949.7	2.3	1.8
Unemployment Rate (%)	Apr/2005	7.9	7.5	7.0	--	--	7.7	7.6	7.2	--	--

CANADA ECONOMIC INDICATORS

INDICATOR	Current Reference Period	MONTHLY/QUARTERLY/YEAR-TO-DATE STATISTICS					ANNUAL STATISTICS					
		% Change					Year-over-Year % Change					
		2 Years Ago	1 Year Ago	Current	Reference Period		2002	2003	2004	2003/2002	2004/2003	
			1 Year Ago/	Current/								
EMPLOYMENT INSURANCE BENEFITS (EI)												
Total Beneficiaries (#)	Feb/2005	986,420	1,018,910	977,290	p	3.3	-4.1	828,723 (2)	841,279 (2)	825,878 (2)	1.5	-1.8
Total Benefits Paid (\$'000)	Feb/2005	1,370,895	1,655,138	1,425,681		20.7	-13.9	14,683,220	14,950,569	14,970,341	1.8	0.1
CONSUMER PRICE INDEX (1992=100)												
Canada												
All-Items	Apr/2005	121.9	123.9	126.9		1.6	2.4	119.0	122.3	124.6	2.8	1.9
Food	Apr/2005	122.4	123.4	128.3		0.8	4.0	120.3	122.4	124.9	1.7	2.0
Shelter	Apr/2005	116.5	119.6	123.4		2.7	3.2	113.8	117.5	120.5	3.3	2.6
INCOME												
Personal Income Per Capita (\$)	2004	28,620	29,204	30,125		2.0	3.2	28,620	29,204	30,125	2.0	3.2
Total Wages & Salaries (\$ millions)	Jan-Dec/2004	521,567.6	538,288.4	559,376.9		3.2	3.9	521,567.6	538,288.4	559,376.9	3.2	3.9
Average Weekly Wages & Salaries (\$)	Feb/2005	687.36	703.35	715.12		2.3	1.7	680.87	690.35	705.68	1.4	2.2
RETAIL/WHOLESALE TRADE												
All Retail Outlets (\$ millions) (sa)	Jan-Mar/2005	81,925.2	84,863.1	90,652.0		3.6	6.8	319,525.4	331,146.6	346,721.5	3.6	4.7
Dept. Store Sales (\$ millions) (a)	Jan-Mar/2005	4,023.7	4,368.5	4,534.7		8.6	3.8	20,959.9	21,681.2	22,832.4	3.4	5.3
New Motor Vehicle Sales (\$ millions) (a)	Jan-Mar/2005	10,837.7	10,391.1	10,920.1		(4.1)	5.1	52,227.5	50,493.3	49,639.2	(3.3)	-1.7
Wholesale Trade (\$millions) (sa)	Jan-Mar/2005	106,816.6	107,788.1	116,498.5		0.9	8.1	411,527.4	421,234.6	450,300.9	2.4	6.9

CANADA ECONOMIC INDICATORS

INDICATOR	Current Reference Period	MONTHLY/QUARTERLY/YEAR-TO-DATE STATISTICS					ANNUAL STATISTICS							
		% Change					Year-over-Year % Change							
		2 Years Ago	1 Year Ago	Current	Reference Period		2002	2003	2004	2003/2002	2004/2003			
			1 Year Ago/	Current/										
COMMODITY SECTORS														
Farm Cash Receipts (\$ millions)	Jan-Dec/2004	36,177.4	34,210.1	36,768.6	-5.4	7.5	36,177.4	34,210.1	36,768.6	-5.4	7.5			
Fish Landings (\$ millions)	Jan-Dec/2003	2,205.3	2,191.2	2,182.7	p	-0.6	-0.4	2,191.2	2,182.7	-- --	-0.4	-- --		
Lumber Production (000m3)	Jan-Feb/2005	13,516.7	13,083.2	13,806.9	-3.2	5.5	79,803.7	78,300.2	83,511.9	-1.9	6.7			
Mineral Production ⁽¹⁾ (\$ millions)	2004	19,918.0	20,077.2	24,167.6	0.8	20.4	19,918.0	20,077.2	24,167.6	0.8	20.4			
Marketable Gas Receipts (million m3)	Jan-Dec/2004	172,113.1	166,395.6	167,283.0	-3.3	0.5	172,113.1	166,395.6	167,283.0	-3.3	0.5			
Power Generation (GW.h)	Jan-Feb/2005	110,354.7	107,877.5	108,607.9	-2.2	0.7	581,062.9	564,145.2	567,598.7	-2.9	0.6			
Manufacturing Shipments (\$ millions)	Jan-Mar/2005	136,076.8	138,345.5	146,445.5	1.7	5.9	550,375.5	545,765.2	591,890.1	-0.8	8.5			
Foreign Exports (\$ millions)	Jan-Mar/2005	93,254.3	91,168.7	96,398.9	-2.2	5.7	365,290.9	354,098.0	385,044.1	-3.1	8.7			
Foreign Imports (\$ millions)	Jan-Mar/2005	86,416.1	82,689.0	90,413.1	-4.3	9.3	348,849.1	335,962.3	355,271.6	-3.7	5.7			
CONSTRUCTION														
Capital Construction														
Expenditures (\$ millions)	2005	136,763.6	150,501.8	pa	158,843.3	i	10.0	5.5	126,034.1	136,763.6	150,501.8	pa	8.5	10.0
Building Permits (\$ millions)	Jan-Mar/2005	9,717.6	10,388.1	11,570.1	6.9	11.4	47,262.1	50,772.0	55,578.6	7.4	9.5			
Housing Starts Centres 10,000+														
Starts (units)	Jan-Mar/2005	34,544	35,483	33,356	2.7	-6.0	179,126	191,907	204,392	7.1	6.5			
Completions (units)	Jan-Mar/2005	32,114	34,341	38,342	6.9	11.7	161,310	173,956	188,345	7.8	8.3			
All Areas														
Starts (units)	Jan-Mar/2005	38,270	39,382	37,084	2.9	-5.8	205,034	218,426	233,431	6.5	6.9			
Completions (units)	Jan-Mar/2005	40,770	45,300	47,053	11.1	3.9	185,626	199,244	215,621	7.3	8.2			
Under Construction (units)	Mar 31/2005	116,684	131,891	144,844	13.0	9.8	119,210	137,774	155,230	15.6	12.7			
GROSS DOMESTIC PRODUCT														
Real GDP (chained '97 \$ millions)	2004	1,074,621	1,096,359	1,126,625	2.0	2.8	1,074,621	1,096,359	1,126,625	2.0	2.8			

⁽¹⁾ Excludes oil and gas.